

EXIST. CURVE CIR-ESW-00-1  
 PI STA. = 16+45.46  
 $\Delta = 45^\circ 09' 26''$  (RT)  
 D = 9° 19' 39"  
 R = 614.27'  
 T = 255.43'  
 L = 484.13'  
 E = 50.99'  
 P.C. STA. = 13+90.03  
 P.C.C. STA. = 18+74.16

EXIST. CURVE CIR-ESW-00-2  
 PI STA. = 20+08.60  
 $\Delta = 16^\circ 01' 34''$  (RT)  
 D = 5° 59' 58"  
 R = 955.00'  
 T = 134.44'  
 L = 267.12'  
 E = 9.42'  
 P.C.C. STA. = 18+74.16  
 P.C.C. STA. = 21+41.29

EXIST. CURVE CIR-ESW-00-3  
 PI STA. = 22+38.85  
 $\Delta = 26^\circ 01' 11''$  (RT)  
 D = 13° 34' 06"  
 R = 422.28'  
 T = 97.57'  
 L = 191.77'  
 E = 11.12'  
 P.C.C. STA. = 21+41.29  
 P.T. STA. = 23+33.05

EXIST. CURVE CIR-ENW-00-1  
 PI STA. = 10+35.96  
 $\Delta = 23^\circ 06' 09''$  (RT)  
 D = 23° 00' 00"  
 R = 249.11'  
 T = 50.91'  
 L = 100.45'  
 E = 5.15'  
 P.C. STA. = 9+85.04  
 P.T. STA. = 10+85.49

EXIST. CURVE CIR-ENW-00-2  
 PI STA. = 23+51.29  
 $\Delta = 147^\circ 31' 02''$  (LT)  
 D = 17° 41' 01"  
 R = 324.00'  
 T = 1,112.23'  
 L = 834.20'  
 E = 834.46'  
 P.C. STA. = 12+39.06  
 P.T. STA. = 20+73.26

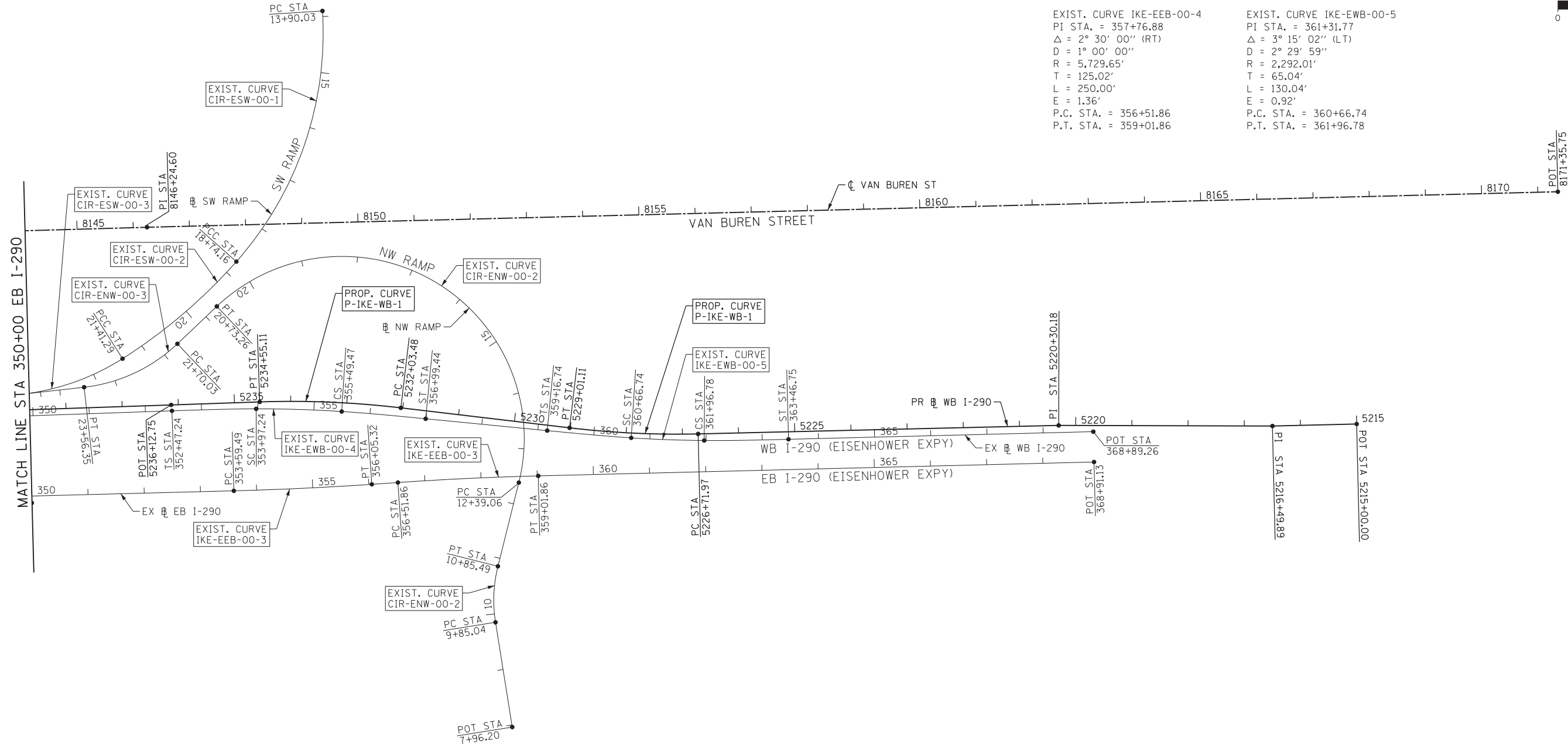
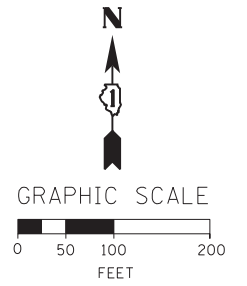
EXIST. CURVE CIR-ENW-00-3  
 PI STA. = 22+66.58  
 $\Delta = 37^\circ 04' 01''$  (RT)  
 D = 19° 53' 40"  
 R = 288.00'  
 T = 96.55'  
 L = 186.32'  
 E = 15.75'  
 P.C. STA. = 21+70.03  
 P.T. STA. = 23+56.35

EXIST. CURVE IKE-EEB-00-3  
 PI STA. = 354+82.42  
 $\Delta = 2^\circ 27' 30''$  (LT)  
 D = 1° 00' 00"  
 R = 5,729.65'  
 T = 122.93'  
 L = 245.82'  
 E = 1.32'  
 P.C. STA. = 353+59.49  
 P.T. STA. = 356+05.32

EXIST. CURVE IKE-EWB-00-4  
 PI STA. = 354+73.38  
 $\Delta = 3^\circ 48' 20''$  (RT)  
 D = 2° 29' 59"  
 R = 2,292.01'  
 T = 76.14'  
 L = 152.23'  
 E = 1.26'  
 S.C. STA. = 353+97.24  
 C.S. STA. = 355+49.47

EXIST. CURVE IKE-EEB-00-4  
 PI STA. = 357+76.88  
 $\Delta = 2^\circ 30' 00''$  (RT)  
 D = 1° 00' 00"  
 R = 5,729.65'  
 T = 125.02'  
 L = 250.00'  
 E = 1.36'  
 P.C. STA. = 356+51.86  
 P.T. STA. = 359+01.86

EXIST. CURVE IKE-EWB-00-5  
 PI STA. = 361+31.77  
 $\Delta = 3^\circ 15' 02''$  (LT)  
 D = 2° 29' 59"  
 R = 2,292.01'  
 T = 65.04'  
 L = 130.04'  
 E = 0.92'  
 P.C. STA. = 360+66.74  
 P.T. STA. = 361+96.78



PROP. CURVE P-IKE-WB-2  
 PI STA. = 5233+29.54  
 $\Delta = 8^\circ 42' 22''$  (LT)  
 D = 3° 27' 36"  
 R = 1,656.00'  
 T = 126.06'  
 L = 251.63'  
 E = 4.79'  
 e = 4.80%  
 T.R. = 72  
 S.E. RUN = 232  
 P.C. STA = 5232+03.48  
 P.T. STA = 5234+55.11

PROP. CURVE P-IKE-WB-1  
 PI STA. = 5227+86.73  
 $\Delta = 8^\circ 06' 16''$  (RT)  
 D = 3° 32' 12"  
 R = 1,620.00'  
 T = 114.77'  
 L = 229.15'  
 E = 4.06'  
 e = 5.00%  
 T.R. = 96  
 S.E. RUN = 241  
 P.C. STA = 5226+71.97  
 P.T. STA = 5229+01.11

BENCHMARKS

MONUMENT	ELEVATION	DESCRIPTION
BM 1156	577.2685	SET MAG ON WB SHOULDER OF I-290 ±75' WEST OF MORGAN ST. OVERPASS 2' S OF EOP
BM 1157	580.8014	SET 5/8 IR ON WB SHOULDER OF I-290 ±550' WEST OF MORGAN ST. (±1' NORTH OF B/C)
BM 1286	587.3550	SET PK 1' SOUTH OF FLAG OF BC E 290 SIGN
BM 1363	593.3963	CUT "□" ON NW SIDE OF L.P. BASE SOUTH SIDE OF HARRISON ST. 4TH L.P. EAST OF MORGAN ST.

FILE PATH = p:\388035\pmt\escomon\line\local\p\AECD\00\Documents\01\_Americas\Transportation\60269938\_Circle\Phase\_1\1000\_CAD\006\_Roadway\Sheets\60W25-Sht-ATB-03.dgn



D:\60W25-Sht-ATB-03.dgn  
 USER NAME = chitua  
 PLOT SCALE = 100.0000' / 1"  
 PLOT DATE = 6/13/2013

DESIGNED - AFC	REVISED -
DRAWN - PHP	REVISED -
CHECKED - DBM	REVISED -
DATE - 6/17/2013	REVISED -

STATE OF ILLINOIS  
 DEPARTMENT OF TRANSPORTATION

ALIGNMENT, TIES AND BENCHMARKS

SCALE: 1" = 100' SHEET 3 OF 4 SHEETS STA. TO STA.

F.A.I. RE.	SECTION	COUNTY	TOTAL SHEETS	SHEET NO.
90/94/290	2013-007R	COOK	317	40
CONTRACT NO. 60W25				
ILLINOIS FED. AID PROJECT				