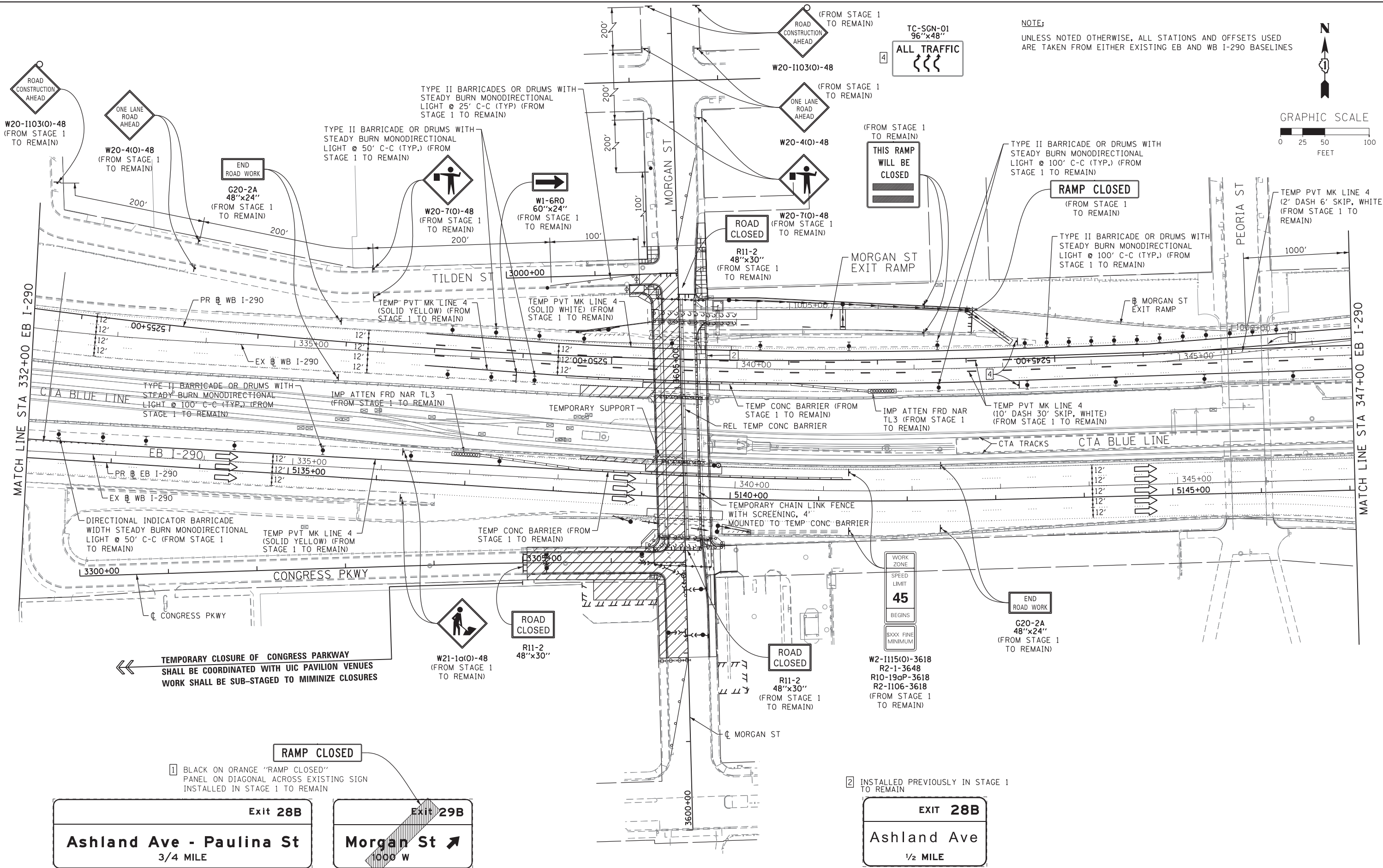
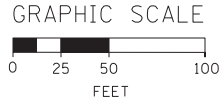


FILE PATH = p:\388035\pmt\lsc\comon\me\local\p\AEC\000\Documents\01_Americas\Transportation\60269938_Circle\Phase_1\000_CAD\005_Roadway\Sheets\60W25-sht-Staging2-02



NOTE:
UNLESS NOTED OTHERWISE, ALL STATIONS AND OFFSETS USED ARE TAKEN FROM EITHER EXISTING EB AND WB I-290 BASELINES



TEMPORARY CLOSURE OF CONGRESS PARKWAY SHALL BE COORDINATED WITH UIC PAVILION VENUES WORK SHALL BE SUB-STAGED TO MINIMIZE CLOSURES

1 BLACK ON ORANGE "RAMP CLOSED" PANEL ON DIAGONAL ACROSS EXISTING SIGN INSTALLED IN STAGE 1 TO REMAIN

2 INSTALLED PREVIOUSLY IN STAGE 1 TO REMAIN

Exit 28B
Ashland Ave - Paulina St
3/4 MILE

Exit 29B
Morgan St
1000 W

EXIT 28B
Ashland Ave
1/2 MILE



D160W25-sht-Staging2-02
USER NAME = petelp2
PLOT SCALE = 50.0000' / in.
PLOT DATE = 6/11/2013

DESIGNED - OPS
DRAWN - PHP
CHECKED - DBM
DATE - 6/17/2013

STATE OF ILLINOIS
DEPARTMENT OF TRANSPORTATION

SUGGESTED STAGES OF CONSTRUCTION AND TRAFFIC CONTROL
STAGE 2
SCALE: 1" = 50' SHEET 2 OF 7 SHEETS STA. TO STA.

F.A.I. RTE.	SECTION	COUNTY	TOTAL SHEETS	SHEET NO.
90/94/290	2013-007R	COOK	317	64
CONTRACT NO. 60W25				
ILLINOIS FED. AID PROJECT				