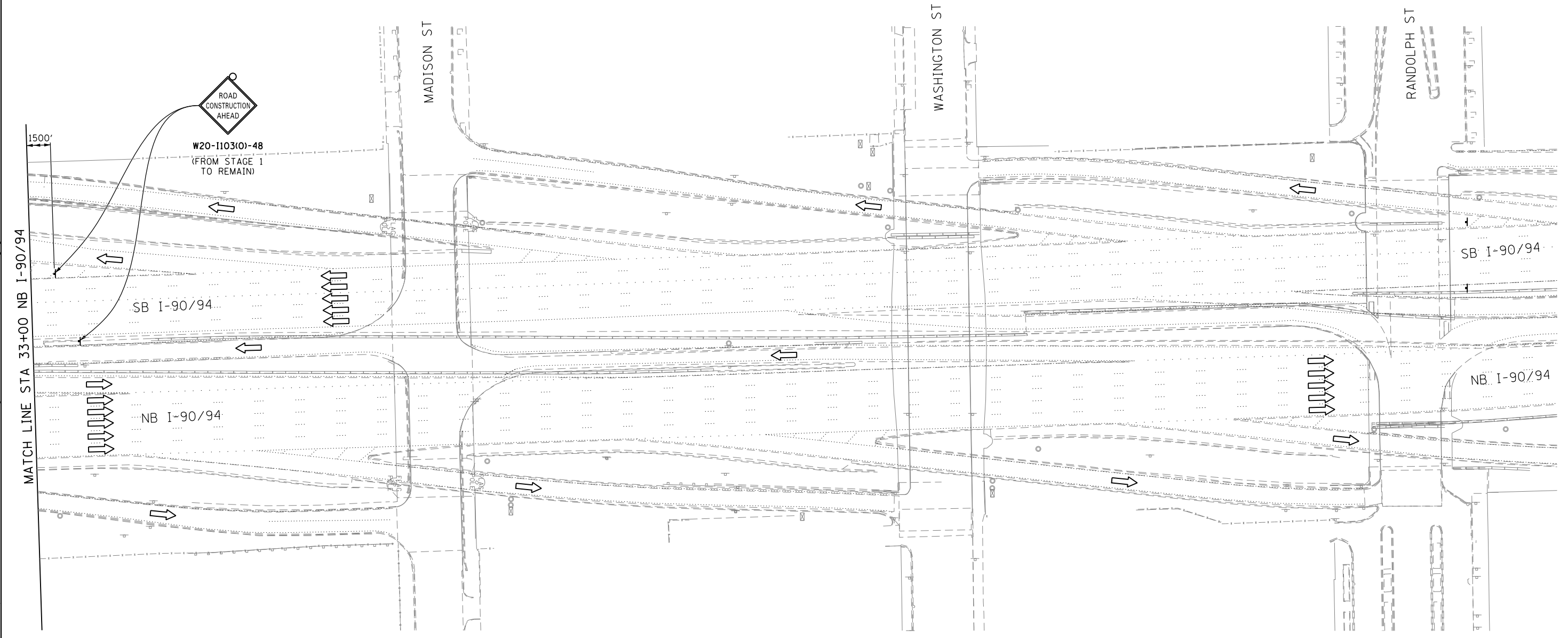


NOTE:
UNLESS NOTED OTHERWISE, ALL STATIONS AND OFFSETS USED
ARE TAKEN FROM EITHER EXISTING EB AND WB I-290 BASELINES



FILE PATH = p:\38803\pmt\escomon\line\local\AECOM\00\Documents\01_Americas\Transportation\66269938_Circle\Phase\I\000_CAD\005_Roadway\Sheets\66W25_Contract\0166W25-sht-Staging3-07



D160W25-sht-Staging3-07
USER NAME = potelp2
PLOT SCALE = 50.0000' / in.
PLOT DATE = 5/15/2013

DESIGNED - OPS	REVISED -
DRAWN - PHP	REVISED -
CHECKED - DBM	REVISED -
DATE - 5/14/2013	REVISED -

**STATE OF ILLINOIS
DEPARTMENT OF TRANSPORTATION**

SUGGESTED STAGES OF CONSTRUCTION AND TRAFFIC CONTROL
STAGE 3
SCALE: 1" = 50' SHEET 7 OF 7 SHEETS STA. TO STA.

F.A.I. RTE.	SECTION	COUNTY	TOTAL SHEETS	SHEET NO.
90/94/290	2013-007R	COOK	317	76
CONTRACT NO. 60W25			ILLINOIS FED. AID PROJECT	