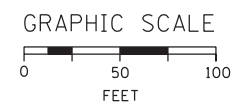
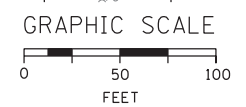
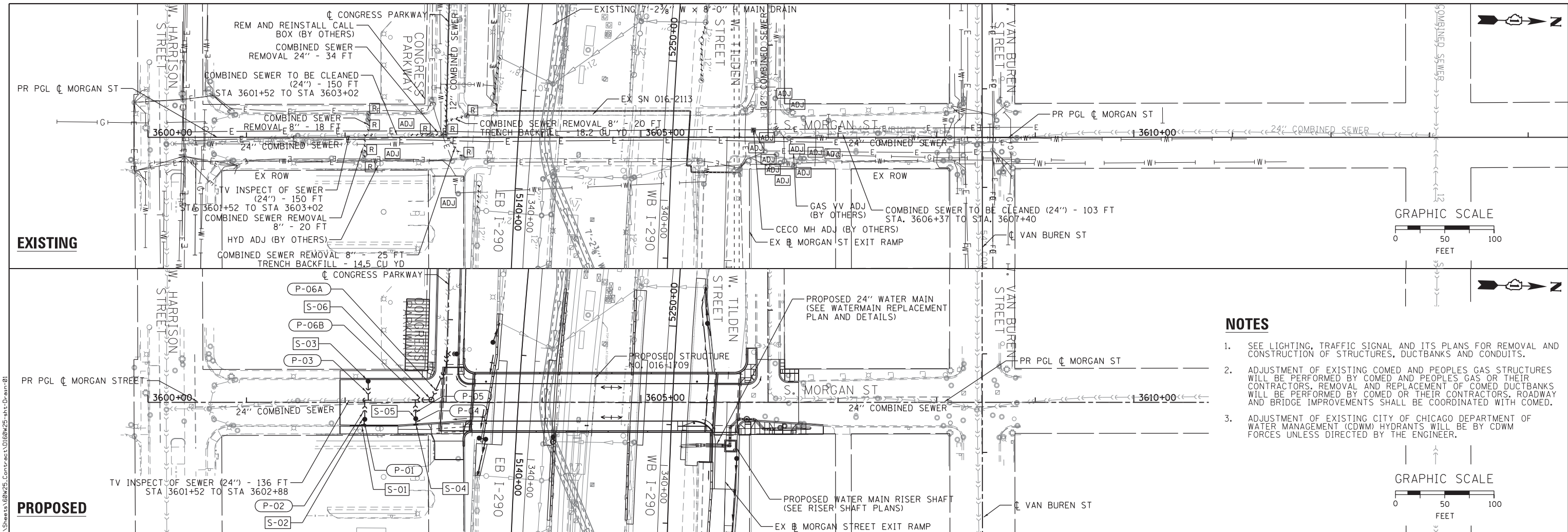


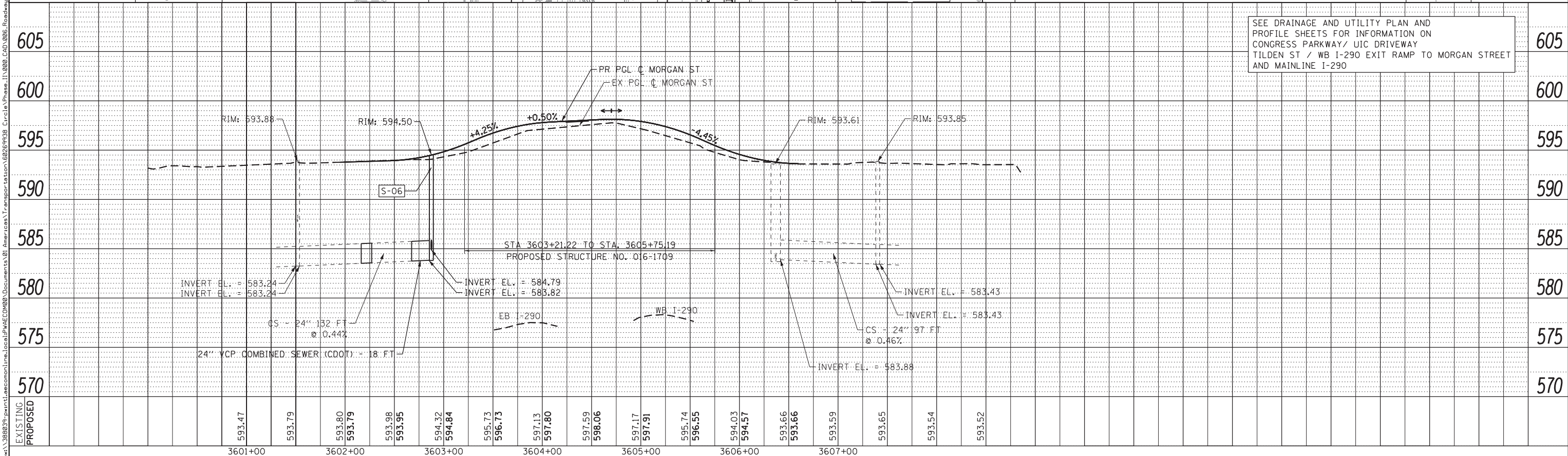
PLAN	SURVEYED	DATE
NOTE BOOK NO.	PLOTTED	
	CHECKED	
	BY	

PROFILE	SURVEYED	DATE
NOTE BOOK NO.	GRADES CHECKED	
	STRUCTURE	
	NOT AT THIS OFFICE	



- NOTES**
- SEE LIGHTING, TRAFFIC SIGNAL AND ITS PLANS FOR REMOVAL AND CONSTRUCTION OF STRUCTURES, DUCTBANKS AND CONDUITS.
 - ADJUSTMENT OF EXISTING COMED AND PEOPLES GAS STRUCTURES WILL BE PERFORMED BY COMED AND PEOPLES GAS OR THEIR CONTRACTORS. REMOVAL AND REPLACEMENT OF COMED DUCTBANKS WILL BE PERFORMED BY COMED OR THEIR CONTRACTORS. ROADWAY AND BRIDGE IMPROVEMENTS SHALL BE COORDINATED WITH COMED.
 - ADJUSTMENT OF EXISTING CITY OF CHICAGO DEPARTMENT OF WATER MANAGEMENT (CDWM) HYDRANTS WILL BE BY CDWM FORCES UNLESS DIRECTED BY THE ENGINEER.

SEE DRAINAGE AND UTILITY PLAN AND PROFILE SHEETS FOR INFORMATION ON CONGRESS PARKWAY / UIC DRIVEWAY TILDEN ST / WB I-290 EXIT RAMP TO MORGAN STREET AND MAINLINE I-290



D160W25-sht-Drain-01	DESIGNED - DMS	REVISED -
USER NAME = chiu	DRAWN - DMS	REVISED -
PLOT SCALE = 50.0000' / in.	CHECKED - AFC	REVISED -
PLOT DATE = 6/14/2013	DATE - 6/17/2013	REVISED -

STATE OF ILLINOIS
DEPARTMENT OF TRANSPORTATION

DRAINAGE AND UTILITY PLAN AND PROFILE
MORGAN STREET
SCALE: 1" = 50' SHEET 1 OF 1 SHEETS STA. TO STA.

F.A.I. RTE. 90/94/290	SECTION 2013-007R	COUNTY COOK	TOTAL SHEETS 317	SHEET NO. 83
CONTRACT NO. 60W25				ILLINOIS FED. AID PROJECT