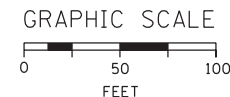
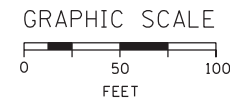
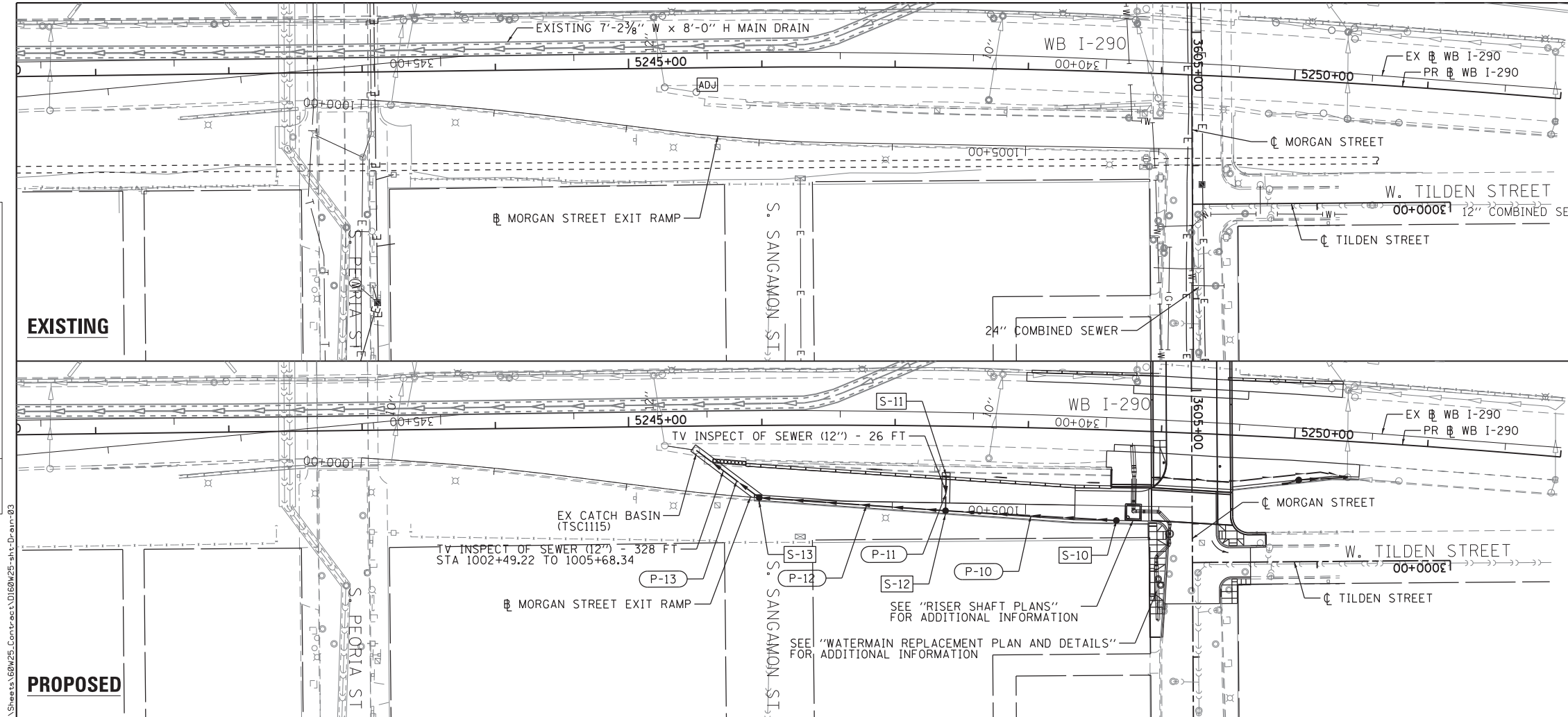


DATE	
BY	
PLAN	SURVEYED
	PLOTTED
	CHECKED
	DATE
	NO.
	NO.

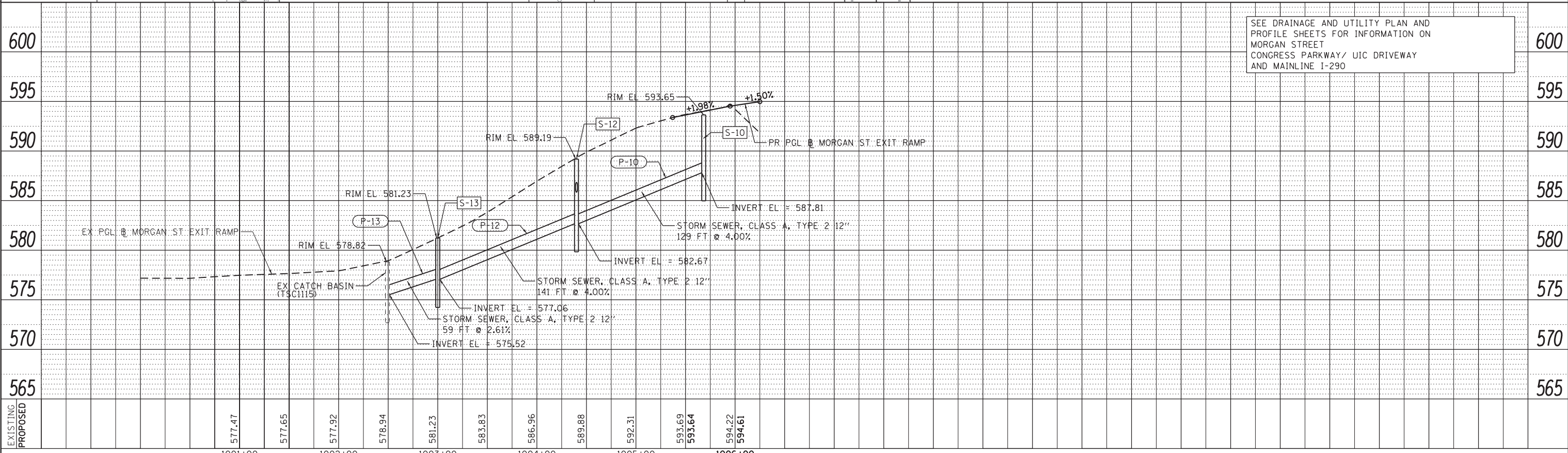
DATE	
BY	
PROFILE	SURVEYED
	PLOTTED
	CHECKED
	DATE
	NO.
	NO.



NOTES

- SEE LIGHTING, TRAFFIC SIGNAL AND ITS PLANS FOR REMOVAL AND CONSTRUCTION OF STRUCTURES, DUCTBANKS AND CONDUITS.
- ADJUSTMENT OF EXISTING COMED AND PEOPLES GAS STRUCTURES WILL BE PERFORMED BY COMED AND PEOPLES GAS OR THEIR CONTRACTORS. REMOVAL AND REPLACEMENT OF COMED DUCTBANKS WILL BE PERFORMED BY COMED OR THEIR CONTRACTORS. ROADWAY AND BRIDGE IMPROVEMENTS SHALL BE COORDINATED WITH COMED.
- ADJUSTMENT OF EXISTING CITY OF CHICAGO DEPARTMENT OF WATER MANAGEMENT (CDWM) HYDRANTS WILL BE BY CDWM FORCES UNLESS DIRECTED BY THE ENGINEER.

SEE DRAINAGE AND UTILITY PLAN AND PROFILE SHEETS FOR INFORMATION ON MORGAN STREET CONGRESS PARKWAY/ UIC DRIVEWAY AND MAINLINE I-290



D160W25-sht-Drain-03
 USER NAME = chitua
 PLOT SCALE = 50.0000' / in.
 PLOT DATE = 6/14/2013

DESIGNED -	DMS	REVISED -	
DRAWN -	DMS	REVISED -	
CHECKED -	AFC	REVISED -	
DATE -	6/17/2013	REVISED -	

STATE OF ILLINOIS
 DEPARTMENT OF TRANSPORTATION

DRAINAGE AND UTILITY PLAN AND PROFILE
 TILDEN ST /WB I-290 EXIT RAMP TO MORGAN STREET
 SCALE: 1" = 50' SHEET 1 OF 1 SHEETS STA. TO STA.

F.A.I. RTE.	SECTION	COUNTY	TOTAL SHEETS	SHEET NO.
90/94/290	2013-007R	COOK	317	85
CONTRACT NO. 60W25				
ILLINOIS FED. AID PROJECT				