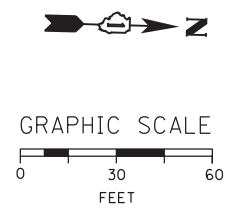
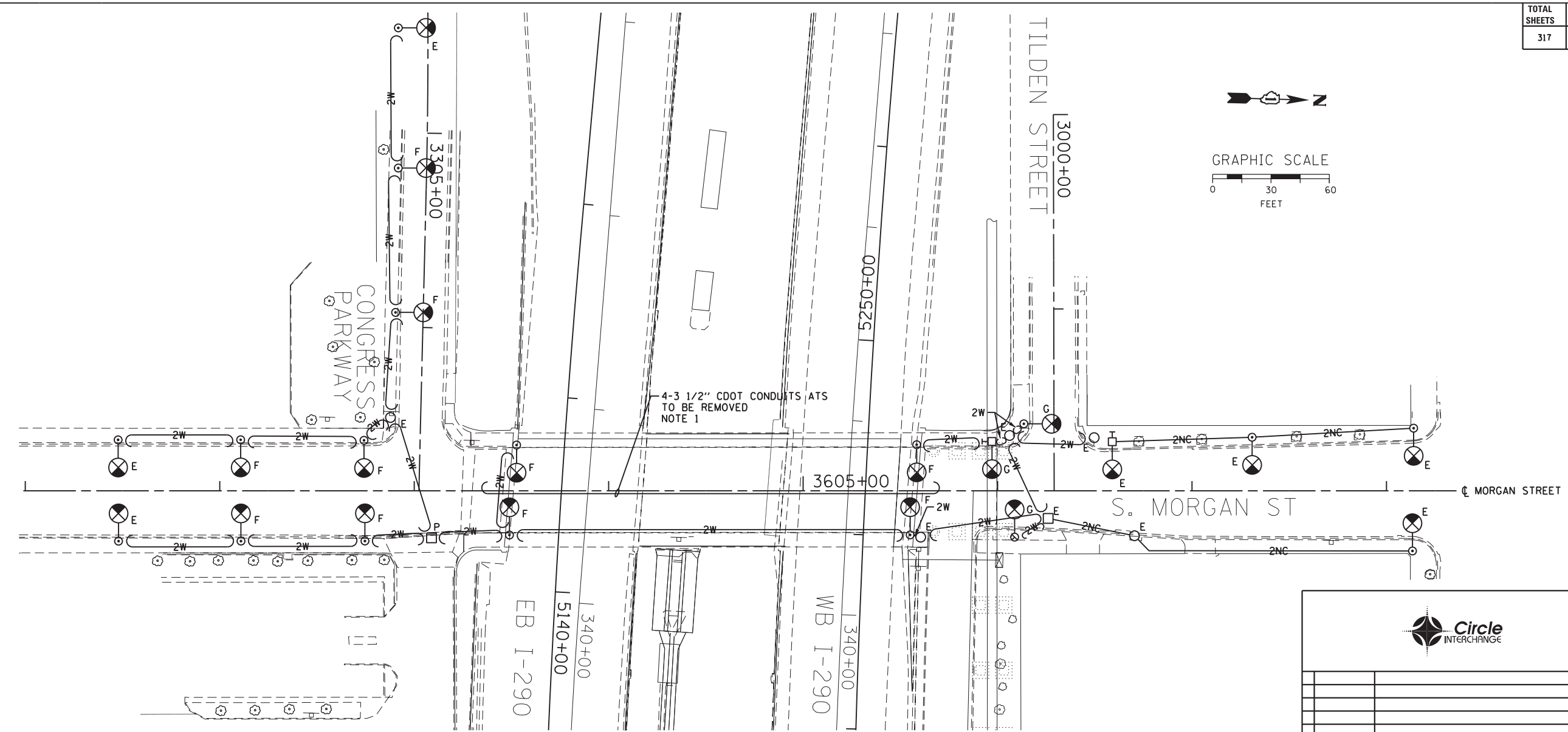


c:\pwworking\acem00\myer.sc\d0207894\DIG0W25-sht-Light-09.dgn 6/14/2013 8:41:07 AM



"E" EXISTING TO REMAIN  
 "F" REMOVE AND SALVAGE EXISTING STEEL POLE, LUMINAIRE, MAST ARM AND BALLAST HOUSING. BREAKDOWN CONCRETE FOUNDATION COMPLETE.  
 "G" REMOVE LUMINAIRE AND MAST ARM. ANCHOR BASE STEEL POLE AND CONCRETE FOUNDATION TO BE REMOVED WITH TRAFFIC SIGNAL WORK.  
 "P" REMOVE EXISTING MANHOLE COMPLETE

**NOTES:**

1. THE EXISTING CDOT CONDUITS ATTACHED TO THE UNDERSIDE OF THE BRIDGE STRUCTURE MAY CONTAIN ASBESTOS MATERIALS. THE CONDUITS SHALL BE REMOVED AND DISPOSED OF PROPERLY PRIOR TO THE BRIDGE DEMOLITION. THE CDOT ASBESTOS CONDUIT REMOVAL SHALL BE COORDINATED WITH THE REMOVAL OF THE COMED ASBESTOS CONDUITS ATTACHED TO THE UNDERSIDE OF THE BRIDGE. ASBESTOS CONDUIT REMOVAL SHALL BE PAID FOR UNDER THE REMOVAL OF ASBESTOS CEMENT CONDUIT PAY ITEM.

FOR CONDUIT AND FOUNDATION PLANS  
 SEE DRAWING NO. E-07.  
 FOR LIGHTING CABLE AND EQUIPMENT  
 INSTALLATION PLANS SEE DRAWING NO. E-08.

DATE	REVISION
<b>CITY OF CHICAGO</b> DEPARTMENT OF TRANSPORTATION DIVISION OF ENGINEERING	
CONSULTANT: <b>AECOM</b> <small>303 EAST WACKER DRIVE, SUITE 1400 CHICAGO, IL 60601-5276 PHONE: (312) 373-7700 FAX: (312) 373-6800</small>	
WORK ORDER NO. _____	DATE _____
COST ALLOCATION ACCOUNT _____	
APPROPRIATION ACCOUNT _____	MATERIAL _____ LABOR _____
<b>MORGAN STREET LIGHTING REMOVAL PLAN</b>	
<b>CITY OF CHICAGO</b> DEPT. OF TRANSPORTATION DIVISION OF ELECTRICAL OPERATIONS	
DRAFTSMAN: CAM	CHIEF DRAFTSMAN: ENGINEER: WDS
SUPERVISING ENGINEER: JPC	ELEC. DESIGN ENGR.
ENGINEER OF ELECTRICITY:	
GEN'L SUPT. OF ELECTRICITY:	
DEPUTY COMMISSIONER:	
SIZE: 22"   34"	SCALE: 1" = 30'
DATE: 6/17/2013	DATE:
C.D.O.T. PROJECT NO.:	DWG. NO.: 9 OF 11

E-09