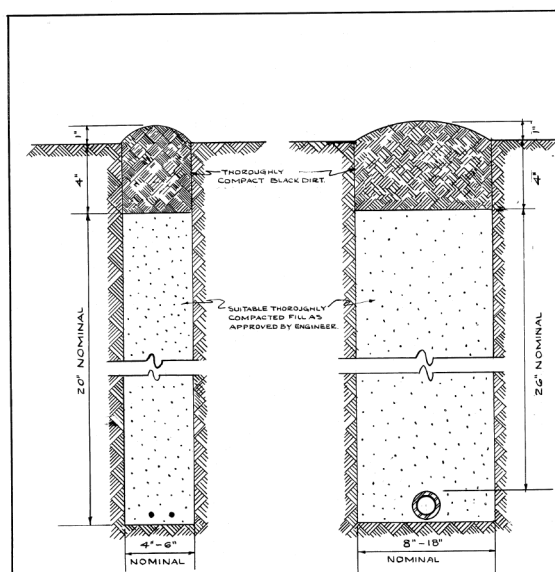


20'-0"
17'-0"
15'-0"
13'-0"
11'-0"
9'-0"
6'-0"

**ALUMINUM PEDESTAL BASE WITH HANDHOLE**  
for  
Street Lighting Control, Traffic Signal  
Control and Traffic Signal Head

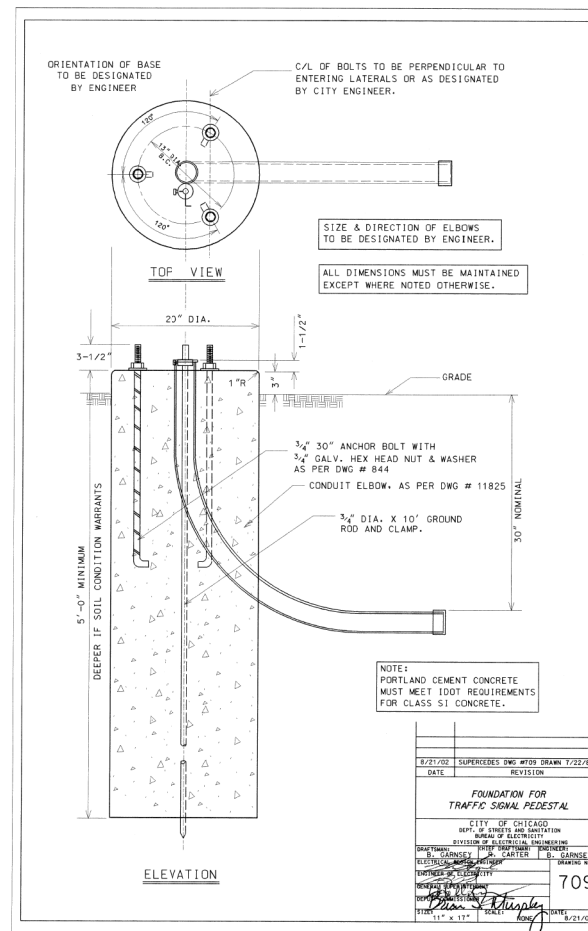
REVISIONS	
A	5-9-60
B	6-30-60
C	12-21-60
D	1-13-62
E	6-9-64
F	7-18-71
G	02-16-73
H	3-4-79



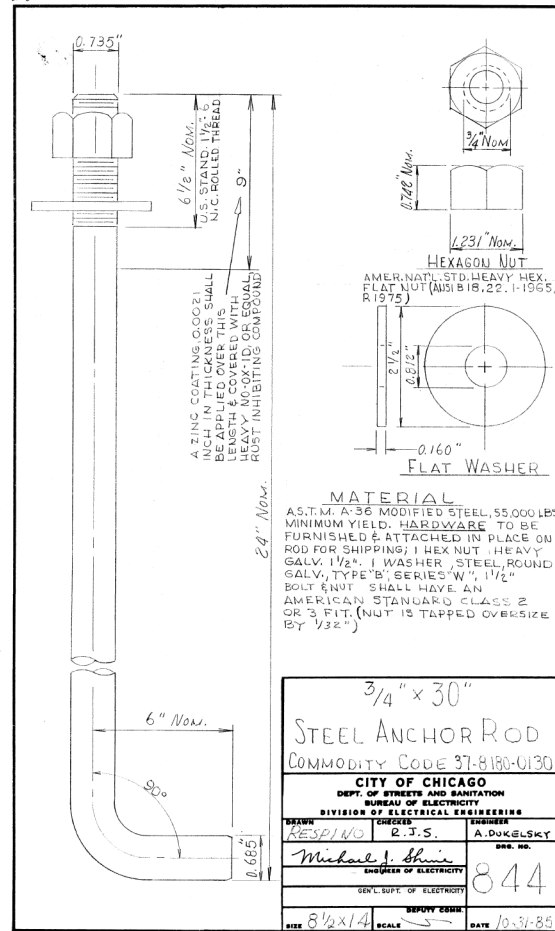
**CABLE TRENCH**      **CONDUIT TRENCH**

**NOTE**  
EXCESS SOIL FROM TRENCH TO BE COMPLETELY REMOVED FROM SITE AS SOON AS PRACTICABLE.  
BACKFILL TO BE TAMPED & THOROUGHLY COMPACTED AS SHOWN.

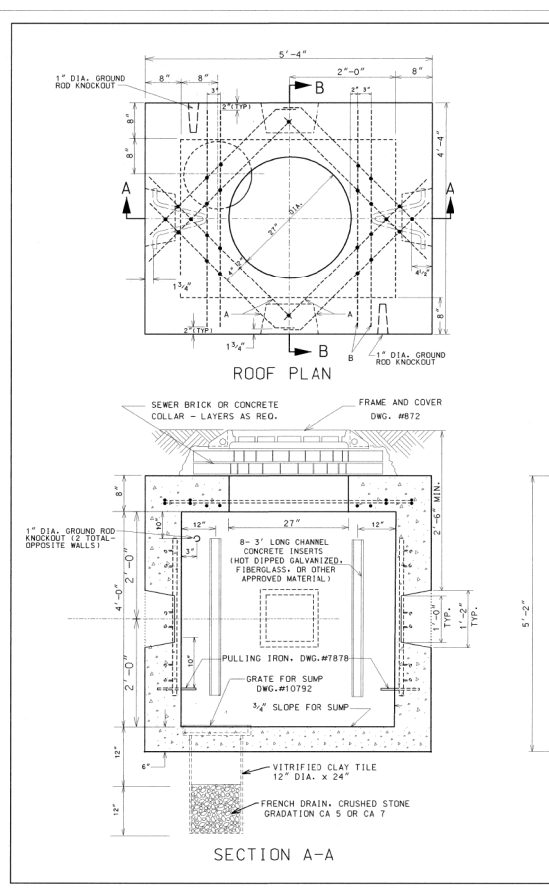
**STANDARD METHOD FOR BACKFILLING CABLE & CONDUIT TRENCHES IN SODDED PARKWAY & LAWNS**



8/21/02	SUPERCEDES DWG. W/18 DRAWN 7/22/00
DATE	REVISION
FOUNDATION FOR TRAFFIC SIGNAL PEDESTAL	
CITY OF CHICAGO DEPT. OF STREETS & SANITATION DIVISION OF ELECTRICAL ENGINEERING	
DESIGNED BY	RESPIANO
CHECKED BY	R. J. S.
ENGINEER	A. DUKELSKY
DWG. NO.	709
DATE	8/21/02



3/4" x 30"	
STEEL ANCHOR ROD	
COMMODITY CODE 37-8180-0130	
CITY OF CHICAGO DEPT. OF STREETS & SANITATION DIVISION OF ELECTRICAL ENGINEERING	
DESIGNED BY	RESPIANO
CHECKED BY	R. J. S.
ENGINEER	A. DUKELSKY
DWG. NO.	844
DATE	10-31-85



EXCAVATION (CONSTRUCTION INFORMATION)	
COMPLETE MANHOLE	6.0 CU. YDS.
NEW ROOF ONLY	2.0 CU. YDS.
SHEETING MANHOLE	150.0 SQ. FT.

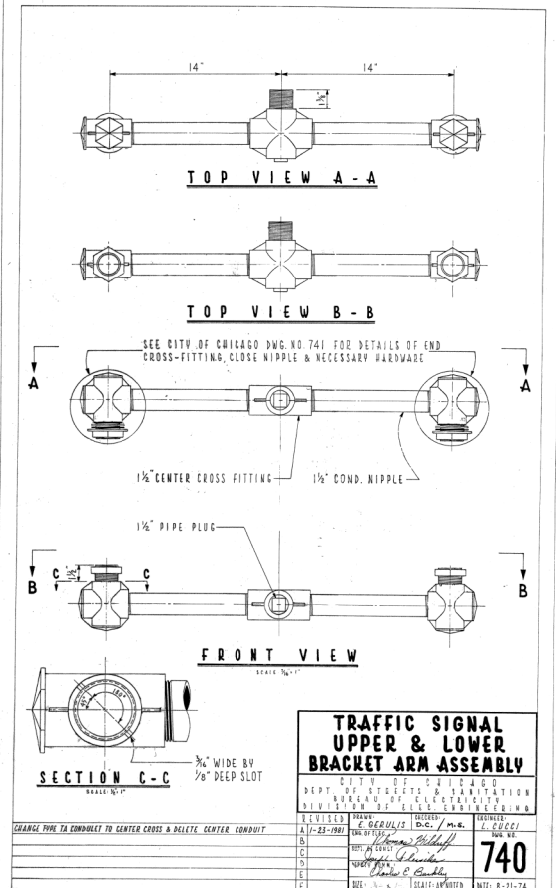
#5 REINFORCING BARS		
BAR LENGTH	NO. OF BARS	TOTAL FT.
A 3'-4"	4	13'-4"
B 4'-0"	10	40'-0"

MATERIALS FOR ROOF ONLY	
CONCRETE	0.45 CU. YDS.
REINFORCING BARS #5	54'

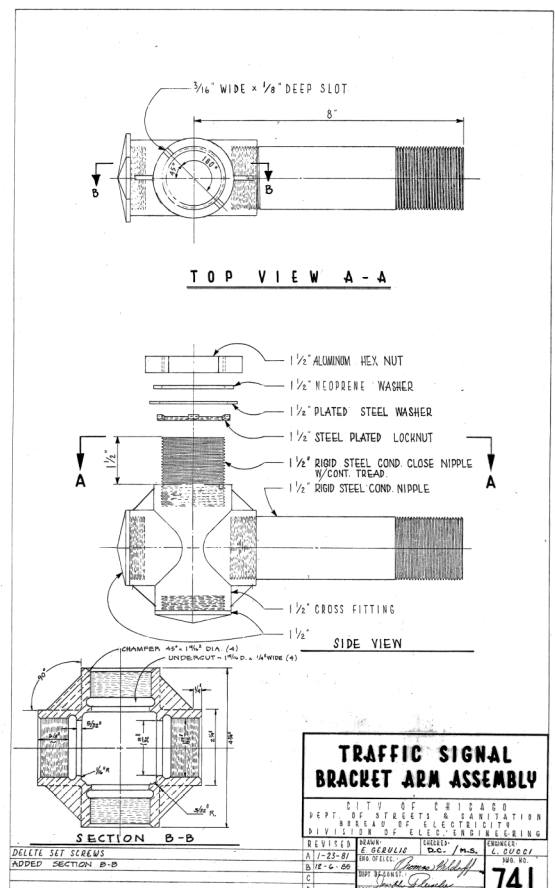
DWG.	MATERIAL	CODE	SIZE	QTY
	FORM FOR MANHOLE	17-8814-0000	3'-6"x4'-1"	1
	CONDUIT END BELL	AS REQ.		
	TILE - SEWER	39-6058-3200	12"x24" x 1'	1
	SLAB BOLSTER		2" x 20"	1
	BAR, REINFORCING	20-5472-8650	1/2" @ 54"	1
	TIE WIRE	13-9318-6106	16GA. 35'	1
	PULLING IRON	02-4483-6370	1/2" @ 2'	1
	CONCRETE	06-3247-2840	1 CU. YDS.	1
	SEWER BRICK	06-1452-3720	STD. 50	1
	GRATE FOR SUMP	02-4368-7100	15" @ 1'	1
	GROUND ROD	06-7746-8000	2"x10" x 1'	1
	GROUND ROD CLAMP	09-0256-3240	1/2" x 1"	1
	CRUSHED STONE	05-9097-9471	1/2" @ 2'	1
	872 MANHOLE FRAME	02-4299-5524	24" x 24"	1
	872 MANHOLE COVER	02-4574-5040	24" x 24"	1
	CONC. CHANNEL INSERT	02-4574-5040	3" x 8"	1

**NOTES:**  
1. PRECAST MANHOLES MUST BE PROVIDED WITH CHANNEL INSERTS, PULLING IRONS, AND CONDUIT KNOCK-OUTS.  
2. ALL CONCRETE MUST BE PORTLAND CEMENT CONCRETE MEETING DOT REQUIREMENTS FOR CLASS FC CONCRETE FOR PRE-CAST STRUCTURES, OR CLASS ST CONCRETE FOR CAST-IN-PLACE STRUCTURES.  
3. REINFORCING BARS MUST MEET ASTM A615 GRADE 60.

8/21/02	SUPERCEDES DWG. 730 DATED JAN 12, 1996
1/12/96	SUPERCEDES DWG. 730 DATED NOV. 21, 1973
DATE	REVISION
3' x 4' x 4' CONCRETE MANHOLE WITH 24" FRAME AND COVER	
CITY OF CHICAGO DEPT. OF STREETS & SANITATION DIVISION OF ELECTRICAL ENGINEERING	
DESIGNED BY	B. GARNSEY
CHECKED BY	B. CARTER
ENGINEER	B. GARNSEY
DWG. NO.	730
DATE	8/21/02



TRAFFIC SIGNAL UPPER & LOWER BRACKET ARM ASSEMBLY	
CITY OF CHICAGO DEPT. OF STREETS & SANITATION DIVISION OF ELECTRICAL ENGINEERING	
DESIGNED BY	RESPIANO
CHECKED BY	R. J. S.
ENGINEER	A. DUKELSKY
DWG. NO.	740
DATE	8/21/02



TRAFFIC SIGNAL BRACKET ARM ASSEMBLY	
CITY OF CHICAGO DEPT. OF STREETS & SANITATION DIVISION OF ELECTRICAL ENGINEERING	
DESIGNED BY	RESPIANO
CHECKED BY	R. J. S.
ENGINEER	A. DUKELSKY
DWG. NO.	741
DATE	8/21/02

FILE PATH = H:\Circle CAD\160W25-sht-Ts-84.dgn

**EJM ENGINEERING, INC.**  
411 South Wells Street Suite 1000  
Chicago, Illinois 60607

D160W25-sht-Ts-84.dgn  
USER NAME = Ggedemer  
PLOT SCALE = 1:8000 / 1"  
PLOT DATE = 5/9/2013

DESIGNED - PWF  
DRAWN - PWF  
CHECKED - GG  
DATE - 05/14/2013

REVISED -  
REVISED -  
REVISED -  
REVISED -

**STATE OF ILLINOIS DEPARTMENT OF TRANSPORTATION**

**CDOT STANDARD DRAWINGS FOR TRAFFIC SIGNALS**  
SCALE: NONE SHEET 4 OF 10 SHEETS STA. TO STA.

F.A.I. RTE.	SECTION	COUNTY	TOTAL SHEETS	SHEET NO.
90/94/290	2013-007R	COOK	317	134
				CONTRACT NO. 60W25
ILLINOIS FED. AID PROJECT				