

CL WEST EDGE OF SOUTH APPROACH SLAB

Location	Station	Offset	Theoretical Grade Elevations
CL S. End South Appr. Slab	3603+00.46	35.50	594.30
A	3603+10.46	35.50	594.63
B	3603+20.46	35.50	594.81
N. End South Appr. Slab	-	-	-

EDGE OF WEST BRIDGE PARAPET

Location	Station	Offset	Theoretical Grade Elevations
CL S. End South Appr. Slab	3603+00.03	28.92	594.39
A	3603+10.03	28.92	594.71
B	3603+20.03	28.92	595.11
N. End South Appr. Slab	3603+30.03	28.92	596.22

FRONT FACE OF WEST SIDEWALK

Location	Station	Offset	Theoretical Grade Elevations
CL S. End South Appr. Slab	3602+99.38	19.00	594.52
A	3603+09.38	19.00	594.84
B	3603+19.38	19.00	595.22
N. End South Appr. Slab	3603+29.38	19.00	595.64

EDGE OF SB LANE

Location	Station	Offset	Theoretical Grade Elevations
CL S. End South Appr. Slab	3602+98.92	12.00	594.62
A	3603+08.92	12.00	594.94
B	3603+18.92	12.00	595.31
N. End South Appr. Slab	3603+28.92	12.00	595.73

CL ROADWAY & PROFILE GRADE LINE

Location	Station	Offset	Theoretical Grade Elevations
CL S. End South Appr. Slab	3602+98.14	0.00	594.78
A	3603+08.14	0.00	595.10
B	3603+18.14	0.00	595.47
N. End South Appr. Slab	3603+28.14	0.00	595.88

EDGE OF NB LANE

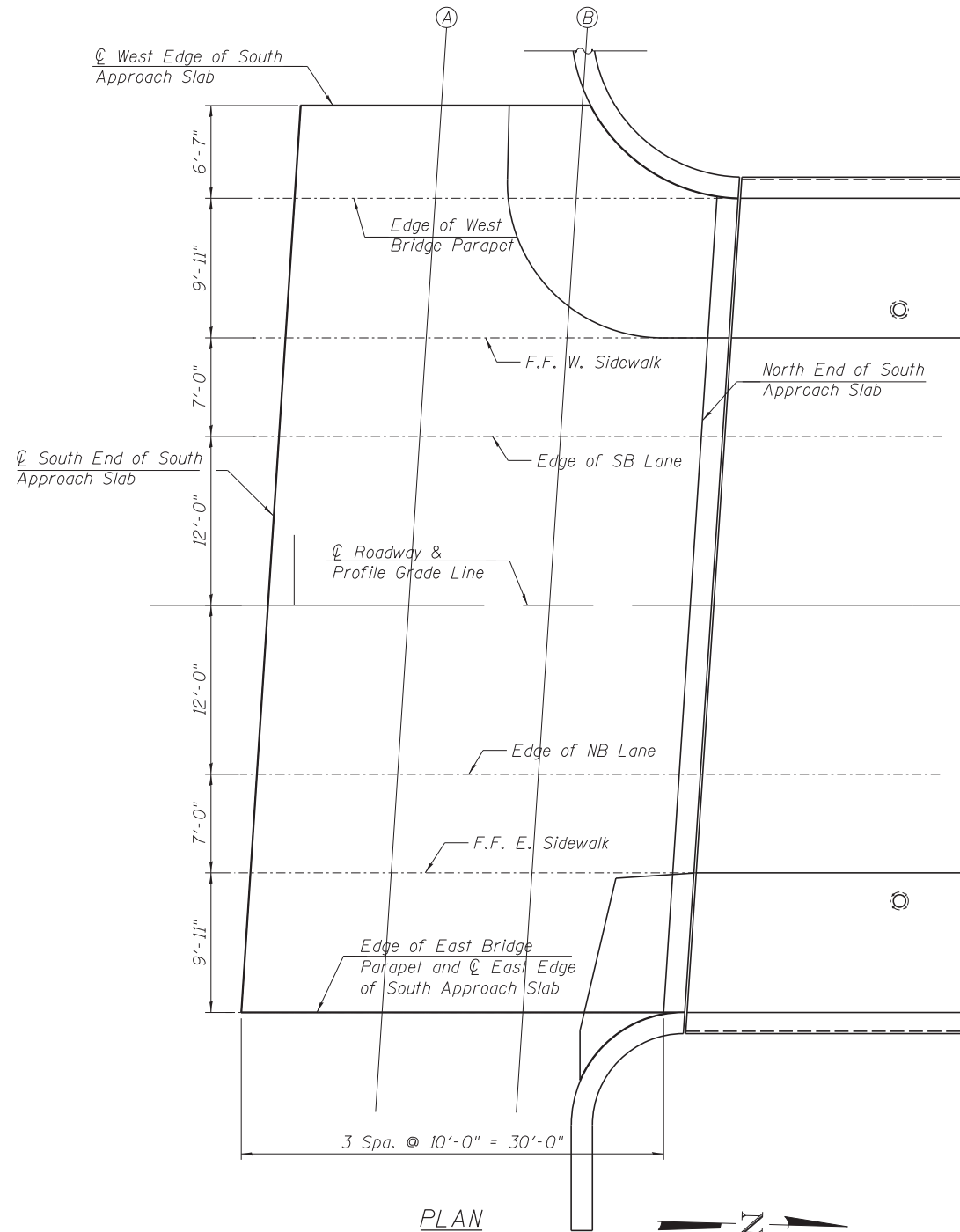
Location	Station	Offset	Theoretical Grade Elevations
CL S. End South Appr. Slab	3602+97.35	-12.00	594.57
A	3603+07.35	-12.00	594.89
B	3603+17.35	-12.00	595.25
N. End South Appr. Slab	3603+27.35	-12.00	595.66

FRONT FACE OF EAST SIDEWALK

Location	Station	Offset	Theoretical Grade Elevations
CL S. End South Appr. Slab	3602+96.89	-19.00	594.45
A	3603+06.89	-19.00	594.76
B	3603+16.89	-19.00	595.12
N. End South Appr. Slab	3603+26.89	-19.00	595.53

EDGE OF EAST BRIDGE PARAPET AND CL EAST EDGE OF SOUTH APPROACH SLAB

Location	Station	Offset	Theoretical Grade Elevations
CL S. End South Appr. Slab	3602+96.24	-28.92	594.76
A	3603+06.24	-28.92	595.13
B	3603+16.24	-28.92	595.53
N. End South Appr. Slab	3603+26.24	-28.92	596.11



PLAN

FILE PATH = C:\Users\will.mardous\Desktop\Wm\0161709-60W25-S14-SouthApprScreed.dgn

**HBM**  
ENGINEERING GROUP, LLC.  
CONSULTING & DESIGN  
INSPECTION & RATING  
RESEARCH & TESTING

0161709-60W25-S14-SouthApprScreed.dgn  
USER NAME = will.mardous  
PLOT SCALE = 6:0.0000 ' : ' / in.  
PLOT DATE = 6/14/2013

DESIGNED - MI, LAB  
DRAWN - LAB  
CHECKED - MAI, MI, JJS  
DATE - 6/17/2013

REVISED -  
REVISED -  
REVISED -  
REVISED -

STATE OF ILLINOIS  
DEPARTMENT OF TRANSPORTATION

TOP OF SOUTH APPROACH SLAB ELEVATIONS  
STRUCTURE NO. 016-1709

SCALE: SHEET S1-14 OF 51 SHEETS STA. TO STA.

F.A.I. RE.	SECTION	COUNTY	TOTAL SHEETS	SHEET NO.
90/94/290	2013-007R	COOK	317	158
				CONTRACT NO. 60W25
ILLINOIS FED. AID PROJECT				