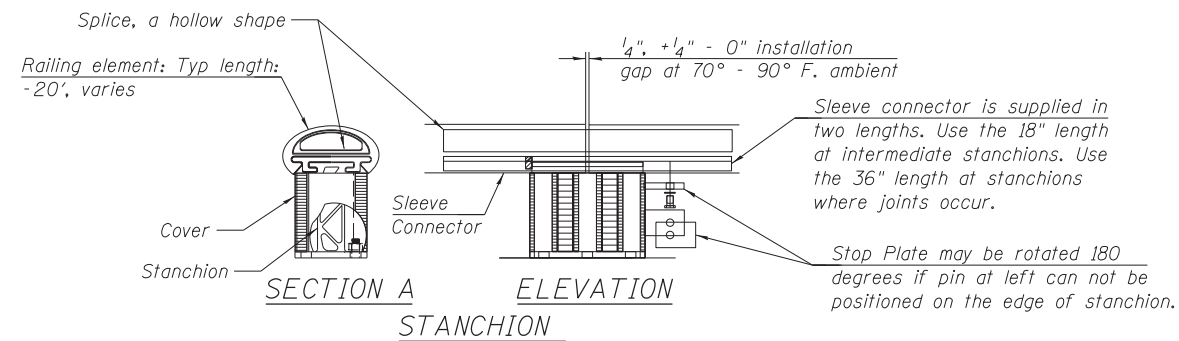
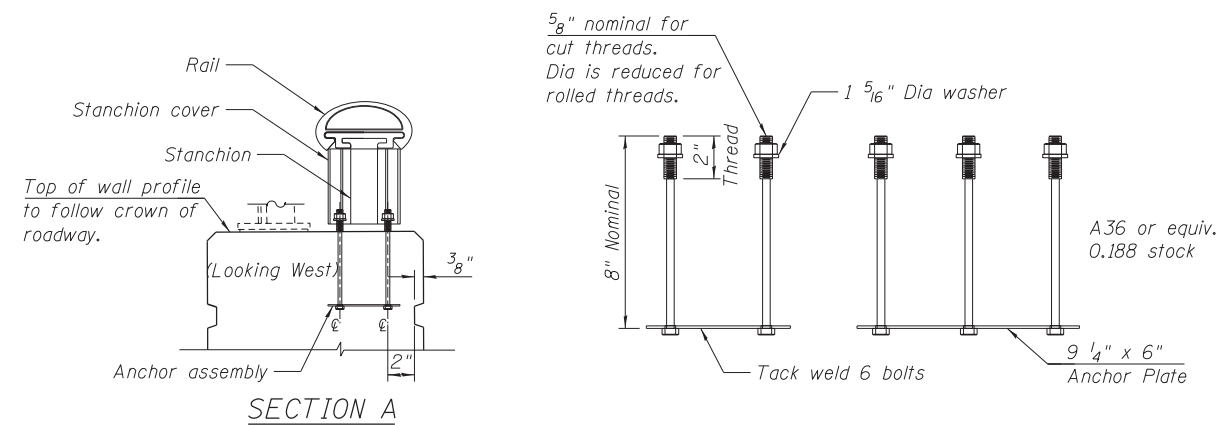


**RAIL DETAIL - STANCHION LOCATION AND SPACING**

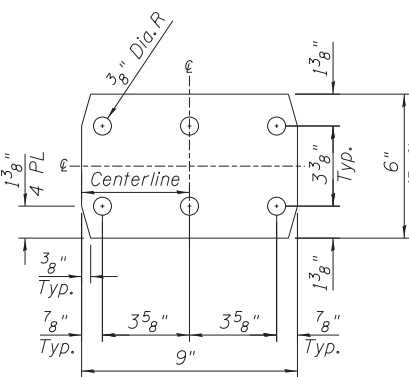


**TYPICAL CHICAGO PARAPET DETAIL**



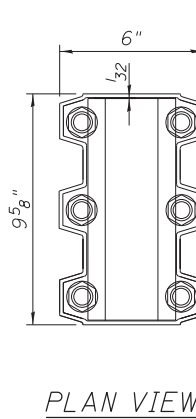
**ANCHOR ASSEMBLY NOTES:**

- All fasteners to meet, or exceed, A-307 strength requirements.
- Galvanize per A-153 after fabrication.
- The size and position of parapet reinforcing must be consistent with capture of the anchor assembly. See structural drawings for rebar details.



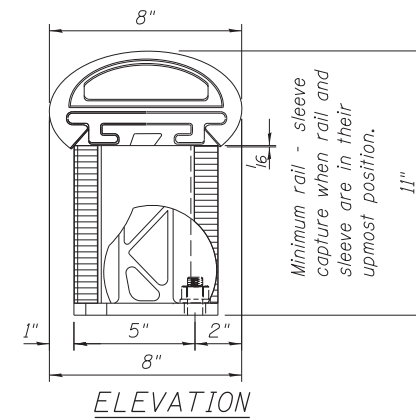
**ELASTOMERIC PAD NOTES:**

- Elastomeric pad for stanchion made from 1/16" thick stock.
- One required per stanchion.



**STANCHION COVER NOTES:**

- Cover is shown superimposed over stanchion with anchors in place.
- The stanchion cover is a non-structural element, serving an aesthetic function. It rests on the flange of the stanchion, without fasteners and is captured in place by the rail and stanchion.



**NOTES:**

- When walls without rail are adjacent to Chicago wall with rail, their traffic face, or the terminus of their traffic face, must be in the same plane as Chicago wall with rail.
- Rustication may vary at terminal ends and is subject to site conditions and site approval. In all other situations, the middle 2.5" x 1.5" rustication is aligned with the center of the stanchion.
- Wall details above show that portion of the wall above the gutter break, the sub structure is not shown. Note that sub structure(s) depth variations could significantly alter the required top of wall profile.
- Field cutting of rail elements is acceptable. The cut edge will no longer be anodized. Saw cut only, flame cut not allowed.
- End caps shall be used at all rail terminals.
- Railing system to be produced using extruded aluminum that can be anodized to match the process and color as previously supplied on Lake Shore Dr.
- Alloy selection is based upon the above color requirement and the engineering sufficiency analysis which must be supplied by the contractor.
- Physical appearance to be equal to "Valentine Urban Systems - Chicago wall with rail".

**BILL OF MATERIAL**

Item	Unit	Total
Decorative Railing Parapet Mounted	FOOT	644

**STATE OF ILLINOIS  
DEPARTMENT OF TRANSPORTATION**

**DECORATIVE RAILING PARAPET MOUNTED DETAILS  
STRUCTURE NO. 016-1709**

F.A.I. RTE.	SECTION	COUNTY	TOTAL SHEETS	SHEET NO.
90/94/290	2013-007R	COOK	317	164
CONTRACT NO. 60W25			ILLINOIS FED. AID PROJECT	

SCALE: SHEET S1-20 OF 51 SHEETS STA. TO STA.

FILE PATH = C:\Users\will.mardous\Desktop\Workgen\0161709-60W25-S20-Br-ridgeRailing.dgn

**HBM**  
ENGINEERING GROUP, LLC.  
CONSULTING & DESIGN  
INSPECTION & RATING  
RESEARCH & TESTING

4415 WEST HARRISON ST.  
SUITE 231  
HILLSIDE, IL 60162  
PHONE: (708) 236-0900  
FAX: (708) 236-0901

0161709-60W25-S20-Br-ridgeRailing.dgn  
USER NAME = will.mardous  
PLOT SCALE = 0.0833' / in.  
PLOT DATE = 6/14/2013

DESIGNED -  
DRAWN -  
CHECKED -  
DATE - 6/17/2013

REVISED -  
REVISED -  
REVISED -  
REVISED -