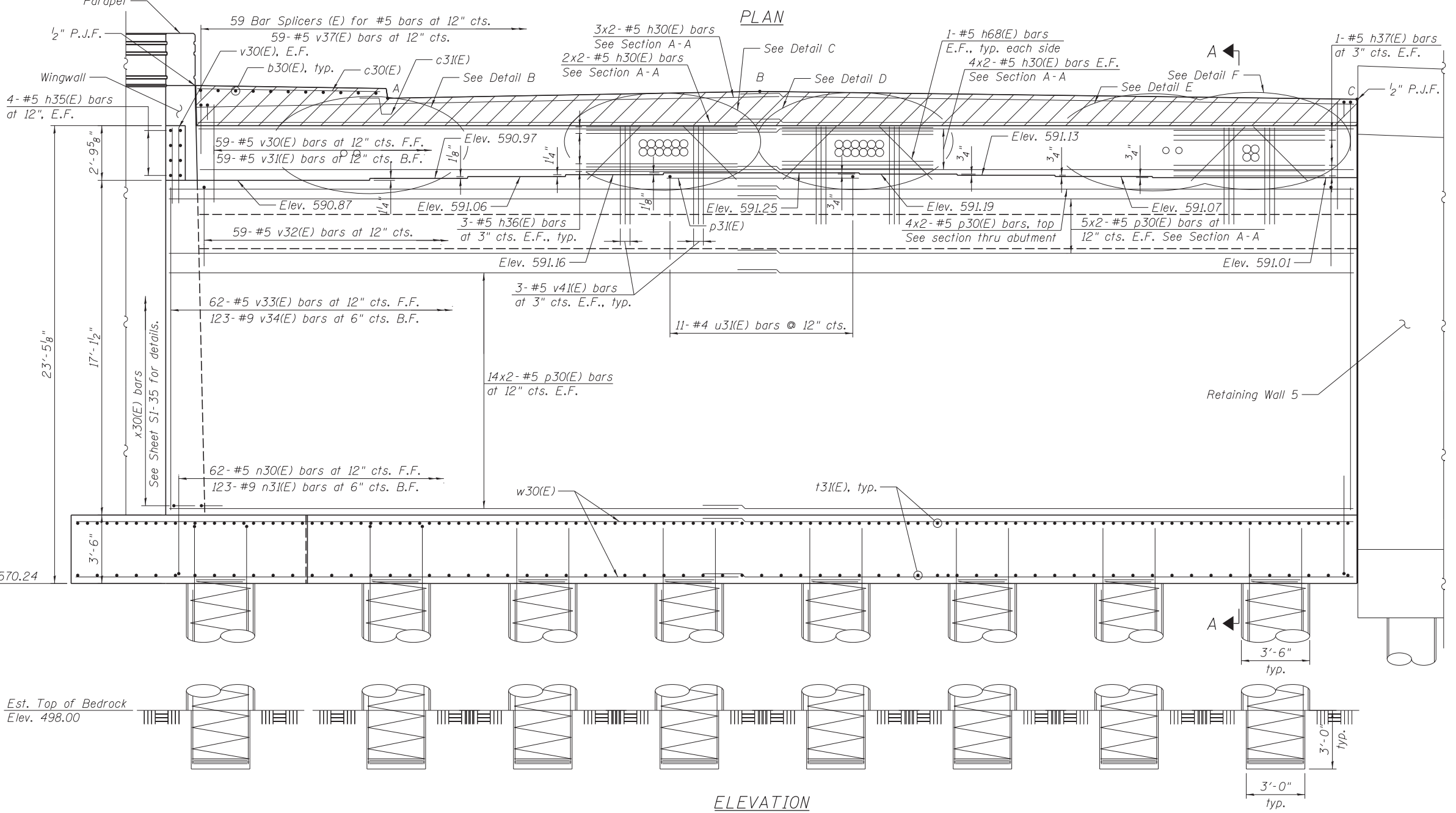
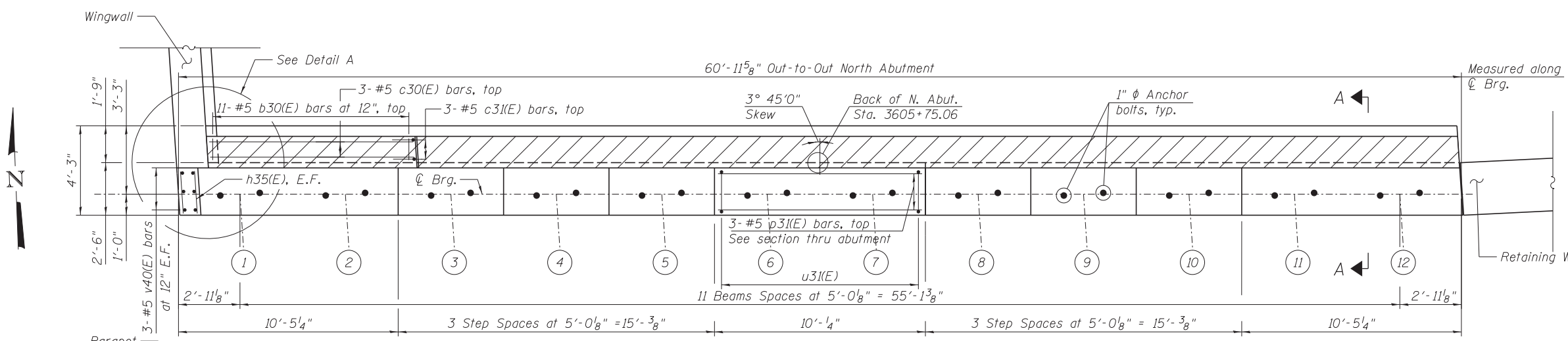
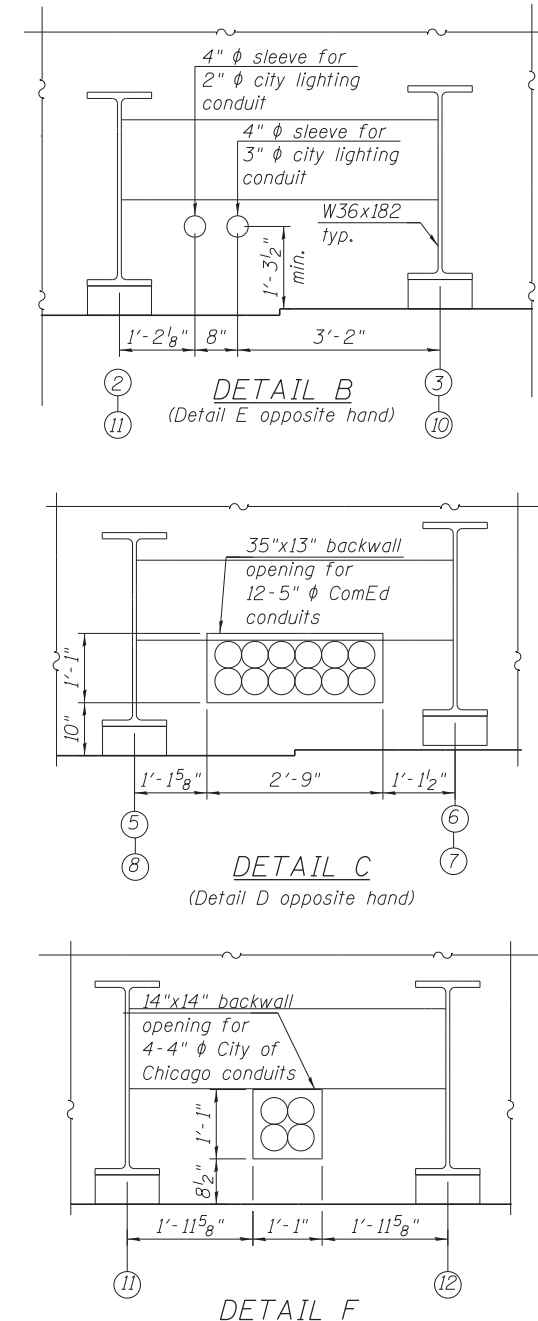


NOTES:

1. For section A-A, see Sheet S1-34.
2. For wingwall reinforcement and details, see Sheet S1-35.
3. For Bearing orientation layout plan, see Sheet S1-25.
4. For location of ITS, lighting and City of Chicago conduits, see lighting plans. The Contractor shall coordinate the locations of ComEd conduits with the ComEd plans and Contractor.

**TOP OF BACK WALL
ELEVATIONS**

POINTS	FRONT FACE	BACK FACE
A - West Curb Line	595.13	595.05
B - Crown	595.48	595.40
C - E. Edge of Abut.	595.08	595.00



ELEVATION
(Looking North)

FILE PATH = C:\Users\will.mardous\OneDrive\Work\0161709-60W25-S32-Nor-thAbut.dgn

HBM
ENGINEERING GROUP, LLC
CONSULTING & DESIGN
INSPECTION & RATING
RESEARCH & TESTING

4415 WEST HARRISON ST.
SUITE 231
HILLSIDE, IL 60162
PHONE: (708) 236-0900
FAX: (708) 236-0901

0161709-60W25-S32-Nor-thAbut.dgn
USER NAME = will.mardous
PLOT SCALE = 3/8" = 1'-0"
PLOT DATE = 6/14/2013

DESIGNED - MI, MAF
DRAWN - LAB, MAF
CHECKED - MAI, MI, WM
DATE - 6/17/2013

REVISED -
REVISED -
REVISED -
REVISED -

**STATE OF ILLINOIS
DEPARTMENT OF TRANSPORTATION**

**NORTH ABUTMENT PLAN AND ELEVATION
STRUCTURE NO. 016-1709**

SCALE: SHEET S1-32 OF 51 SHEETS STA. TO STA.

F.A.I. R.E.	SECTION	COUNTY	TOTAL SHEETS	SHEET NO.
90/94/290	2013-007R	COOK	317	176
CONTRACT NO. 60W25			ILLINOIS FED. AID PROJECT	