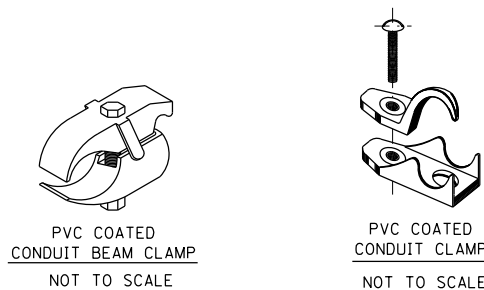
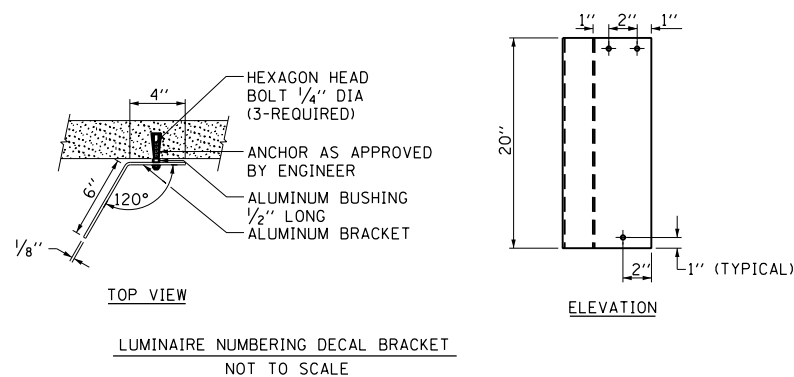


TYPICAL PIER / ABUTMENT MOUNTED UNDERPASS LIGHTING INSTALLATION DETAILS



NOTES:

- LIQUID TIGHT FLEXIBLE METAL CONDUIT, MAXIMUM LENGTH 6'-0", TYPICAL FOR EACH INSTANCE AS SHOWN. PROVIDE PVC COATED RIGID GALVANIZED STEEL CONDUIT AS REQUIRED NOT TO EXCEED 6'-0" OF FLEXIBLE LIQUID TIGHT METAL CONDUIT. LIQUID TIGHT FLEXIBLE METAL CONDUIT WILL BE INCLUDED IN THE COST OF THE CONDUIT ATTACHED TO STRUCTURE, OF THE CORRESPONDING DIA., GALVANIZED STEEL, PVC COATED PAY ITEM EXCEPT THAT THE COST OF THE 3/4" DIA. RIGID STEEL CONDUIT AND 3/4" DIA. FLEXIBLE CONDUIT SHALL BE INCLUDED IN THE LUMINAIRE INSTALLATION.
- UNDERPASS LUMINAIRE MOUNTED TO FACE OF PIER OR ABUTMENT WALL. MOUNTING HEIGHT OF 1" BELOW THE TOP OF PIER OR ABUTMENT WALL TYPICAL FOR ALL PIER/ABUTMENT MOUNTED UNDERPASS LUMINAIRES UNLESS OTHERWISE NOTED.
- EXPANSION ANCHOR, POWDER ACTUATED FASTENERS WILL NOT BE ALLOWED. EXPANSION ANCHOR MUST BE SIZED IN ACCORDANCE WITH MANUFACTURER'S REQUIREMENTS.
- SECURE THE CONDUIT WITH PVC COATED CONDUIT CLAMPS OR CONDUIT BEAM CLAMPS AS SHOWN AT 5'-0" INTERVALS FOR LATERALS AND WITHIN 2'-0" MAXIMUM FROM ANY JUNCTION BOX, FLEXIBLE CONDUIT, OR CHANGE IN DIRECTION. ALL PVC COATED CONDUIT CLAMPS OR BEAM CLAMPS SHALL BE INCLUDED WITH THE COST OF THE "CONDUIT ATTACHED TO STRUCTURE, OF THE CORRESPONDING DIA., GALVANIZED STEEL, PVC COATED" PAY ITEM.
- THE CONCRETE ENCASED CONDUIT TRANSITION SHALL BE INCLUDED IN THE COST OF THE GALVANIZED RIGID STEEL CONDUIT PAY ITEMS.
- ALL CONDUIT ATTACHED TO STRUCTURE SHALL BE PVC COATED RIGID STEEL CONDUIT (PVCC RGC) TYPICAL.

FILE NAME =	USER NAME = pte1p2	DESIGNED -	REVISED - 01-25-05
C:\388039-pwintl.eacom\lne.local\PWAE\COM\Documents\01 Americas\Transportation\0000\Drawn Circle\Phase 11\000 CAD\006 Road\REVISED\60W25-Contract\0160W25-SHT-D1\Detail-19.dgn		CHECKED -	REVISED -
PLOT SCALE = 50.000' / in.		DATE -	REVISED -
PLOT DATE = 5/15/2013			

STATE OF ILLINOIS  
DEPARTMENT OF TRANSPORTATION

PIER / ABUTMENT MOUNTED UNDERPASS LUMINAIRE INSTALLATION DETAILS			
SCALE: NONE	SHEET NO. 19 OF 31 SHEETS	STA.	TO STA.

F.A.I. RTE.	SECTION	COUNTY	TOTAL SHEETS	SHEET NO.
	2013-007R	COOK	317	251
BE-902		CONTRACT NO. 60W25		
FED. ROAD DIST. NO. 1 ILLINOIS FED. AID PROJECT				