

SCHEDULE OF QUANTITIES
IL 58 (GOLF RD) AT IL 59 (SUTTON RD)

NO.	QUANT.	UNIT	DESCRIPTION
1.	1	EACH	MAINTENANCE OF EXISTING TRAFFIC SIGNAL INSTALLATION
2.	4	EACH	TRAFFIC SIGNAL POST, GALVANIZED STEEL 10 FT.
3.	4	EACH	TRAFFIC SIGNAL POST, GALVANIZED STEEL 16 FT.
4.	4	EACH	SIGNAL HEAD, LED, 1-FACE, 3-SECTION, BRACKET MOUNTED
5.	4	EACH	SIGNAL HEAD, LED, 1-FACE, 5-SECTION, BRACKET MOUNTED
6.	4	EACH	SIGNAL HEAD, LED, 1-FACE, 5-SECTION, MAST-ARM MOUNTED
7.	8	EACH	PEDESTRIAN SIGNAL HEAD, LED, 1-FACE, BRACKET MOUNTED WITH COUNTDOWN TIMER
8.	4	EACH	TRAFFIC SIGNAL BACKPLATE, LOUVERED, ALUMINUM
9.	1	EACH	MODIFY EXISTING CONTROLLER CABINET
10.	1	EACH	REMOVE EXISTING TRAFFIC SIGNAL EQUIPMENT
11.	1	EACH	UNINTERRUPTABLE POWER SUPPLY, SPECIAL
12.	8	EACH	PEDESTRIAN PUSH BUTTON, NON-LATCHING

THE FOLLOWING ITEMS SHALL BE REMOVED BY THE CONTRACTOR AND SHALL BE DISPOSED OF BY THEM OUTSIDE THE RIGHT-OF-WAY AT THEIR EXPENSE. THE SALVAGE VALUE OF THE REMOVED EQUIPMENT SHALL BE REFLECTED IN THE CONTRACT BID PRICE.

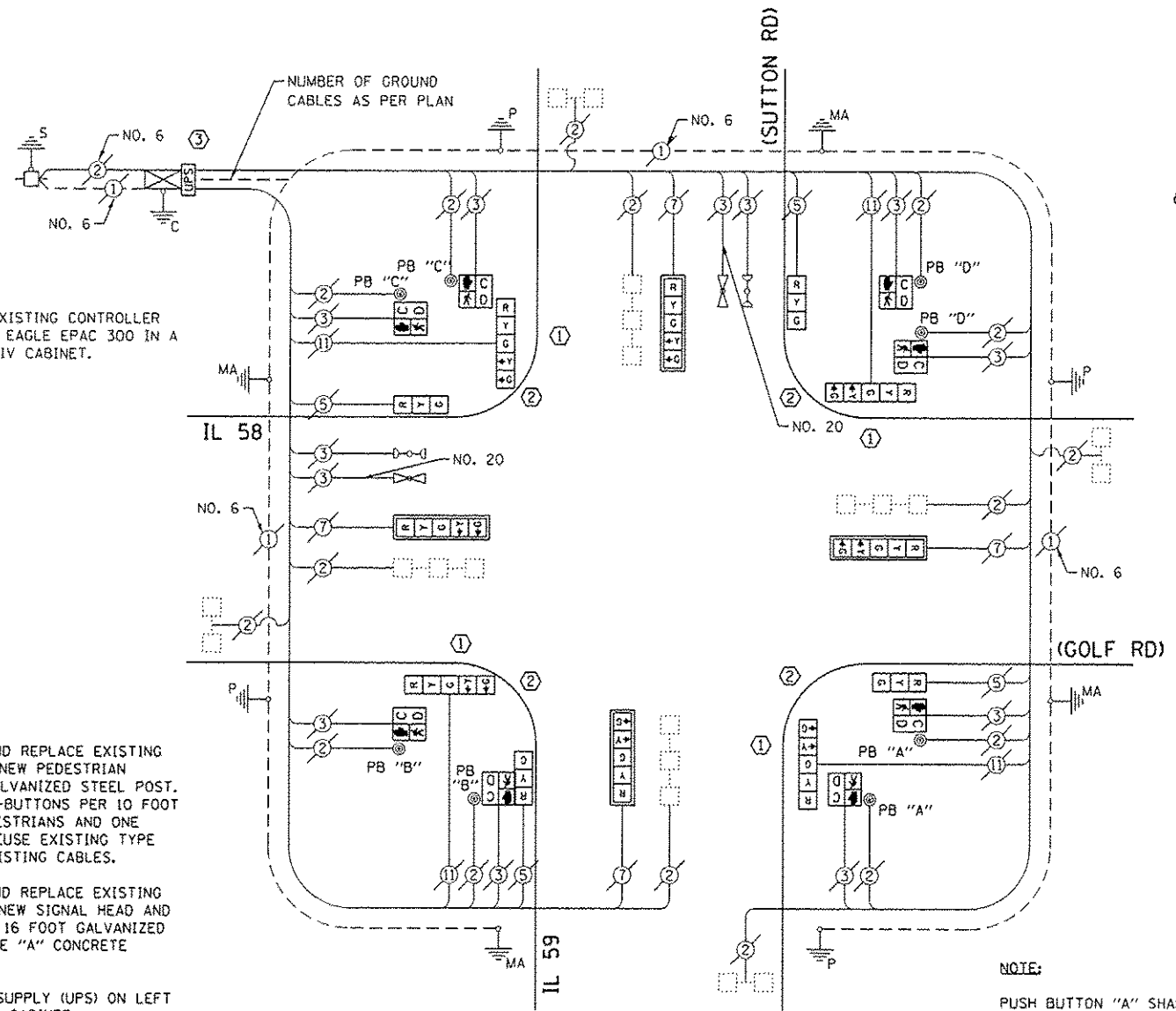
- 4 EACH TRAFFIC SIGNAL HEAD, 1-FACE, 3-SECTION
- 8 EACH TRAFFIC SIGNAL HEAD, 1-FACE, 5-SECTION
- 4 EACH TRAFFIC SIGNAL BACKPLATE
- 8 EACH TRAFFIC SIGNAL POST
- 8 EACH PEDESTRIAN SIGNAL HEAD, 1-FACE
- 8 EACH PEDESTRIAN PUSH-BUTTON

CONSTRUCTION NOTE:

- ① REMOVE EXISTING SIGNAL HEADS AND REPLACE EXISTING 10 FOOT PAINTED POST. INSTALL NEW PEDESTRIAN PUSH-BUTTONS ON NEW 10 FOOT GALVANIZED STEEL POST. INSTALL 2 (TWO) PEDESTRIAN PUSH-BUTTONS PER 10 FOOT POST. ONE LOCATED HIGH FOR EQUESTRIANS AND ONE LOCATED LOW FOR PEDESTRIANS. REUSE EXISTING TYPE "A" CONCRETE FOUNDATION AND EXISTING CABLES.
- ② REMOVE EXISTING SIGNAL HEADS AND REPLACE EXISTING 16 FOOT PAINTED POST. INSTALL NEW SIGNAL HEAD AND PEDESTRIAN SIGNAL HEADS ON NEW 16 FOOT GALVANIZED STEEL POST. REUSE EXISTING TYPE "A" CONCRETE FOUNDATION AND EXISTING CABLES.
- ③ INSTALL UNINTERRUPTABLE POWER SUPPLY (UPS) ON LEFT SIDE OF THE EXISTING CONTROLLER CABINET.

NOTE:

THE EXISTING CONTROLLER IS AN EAGLE EPAC 300 IN A TYPE IV CABINET.

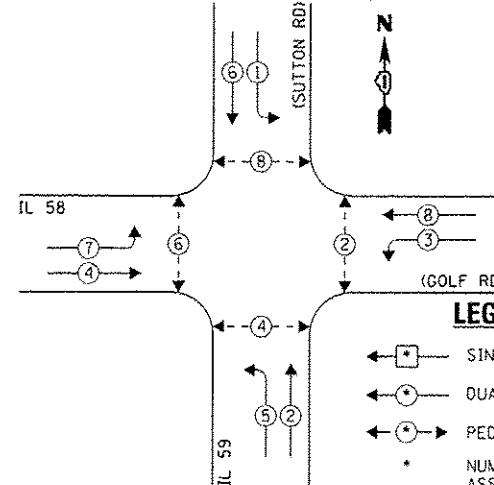


CABLE PLAN

NOTE:

- PUSH BUTTON "A" SHALL PLACE A CALL IN PHASES 2 AND 4.
- PUSH BUTTON "B" SHALL PLACE A CALL IN PHASES 4 AND 6.
- PUSH BUTTON "C" SHALL PLACE A CALL IN PHASES 6 AND 8.
- PUSH BUTTON "D" SHALL PLACE A CALL IN PHASES 2 AND 8.

EXISTING CONTROLLER SEQUENCE

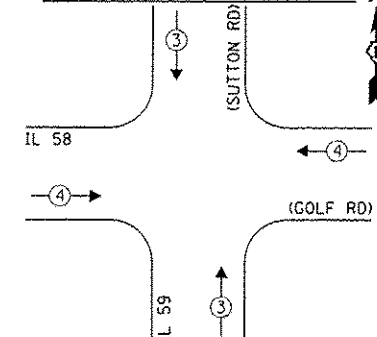


LEGEND:

- ◀ * → SINGLE ENTRY PHASE
- ◀ * → DUAL ENTRY PHASE
- ◀ * → PEDESTRIAN PHASE
- * NUMBER REFERS TO ASSOCIATED PHASE
- ◊ OL OVERLAP

EXISTING PHASE DESIGNATION DIAGRAM

EXISTING EMERGENCY VEHICLE PREEMPTION SEQUENCE



EXISTING EMERGENCY VEHICLE PREEMPTORS	
EMERGENCY VEHICLE PREEMPTOR	3 4
MOVEMENT	

I.D.O.T. TRAFFIC SIGNAL INSTALLATION ELECTRICAL SERVICE REQUIREMENTS					TOTAL WATTAGE
TYPE	NO. LAMPS	WATTAGE		OPERATION	
SIGNAL (RED)	12	135	17	0.50	102.0
SIGNAL (YELLOW)	12	135	25	0.25	75.0
SIGNAL (GREEN)	12	135	15	0.25	45.0
ARROW	16	135	12	0.10	19.2
PED. SIGNAL	8	90	25	1.00	200.0
CONTROLLER	1	-	100	1.00	100.0
LUMINAIRE	-	-	250	0.50	-
L.E.D. ST. NAME SIGN	-	-	64	0.50	-
VIDEO SYSTEM	-	-	150	1.00	-
BATTERY BACKUP	1	-	25	1.00	25.0
ILLUMINATED SIGN	-	-	25	0.05	-
TOTAL =					566.2

ENERGY COSTS - BILLED TO: IL DEPT. OF TRANSPORTATION
(ADDRESS) 201 W. CENTER COURT
(ADDRESS) SCHALMBURG, IL 60196-1096
ENERGY SUPPLY - CONTACT: DAVE SCHACHT
PHONE: 630-437-2129
COMPANY: COMED - OAKBROOK TERRACE

THE TRAFFIC SIGNAL CONTROL EQUIPMENT FOR THIS PROJECT SHALL BE "EAGLE" TO MATCH THE EXISTING ADJACENT SYSTEM.

FILE NAME	USER NAME	DESIGNED	REVISED
D:\60W38-041.dgn	zwallston	JRD	-
Default		GW3	-
		KLB	-
		DATE	05/10/13

STATE OF ILLINOIS
DEPARTMENT OF TRANSPORTATION

SCHEDULE OF QUANTITIES, CABLE PLAN, PHASE DESIGNATION DIAGRAM, & EMERGENCY VEHICLE PREEMPTION SEQUENCE
IL 58 (GOLF RD) AT IL 59 (SUTTON RD)

F.A. RTE.	SECTION	COUNTY	TOTAL SHEETS	SHEET NO.
VAR	2013-007 TS	COOK	62	40
ILLINOIS FED. AID PROJECT			CONTRACT NO. 60W38	