

F.A. RTE.	SECTION	COUNTY	TOTAL SHEETS	SHEET NO.
VAR.	2013-031 RS	WILL	21	1
		ILLINOIS	CONTRACT NO. 60W67	

STATE OF ILLINOIS
DEPARTMENT OF TRANSPORTATION
DIVISION OF HIGHWAYS

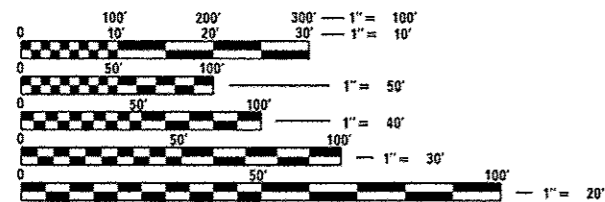
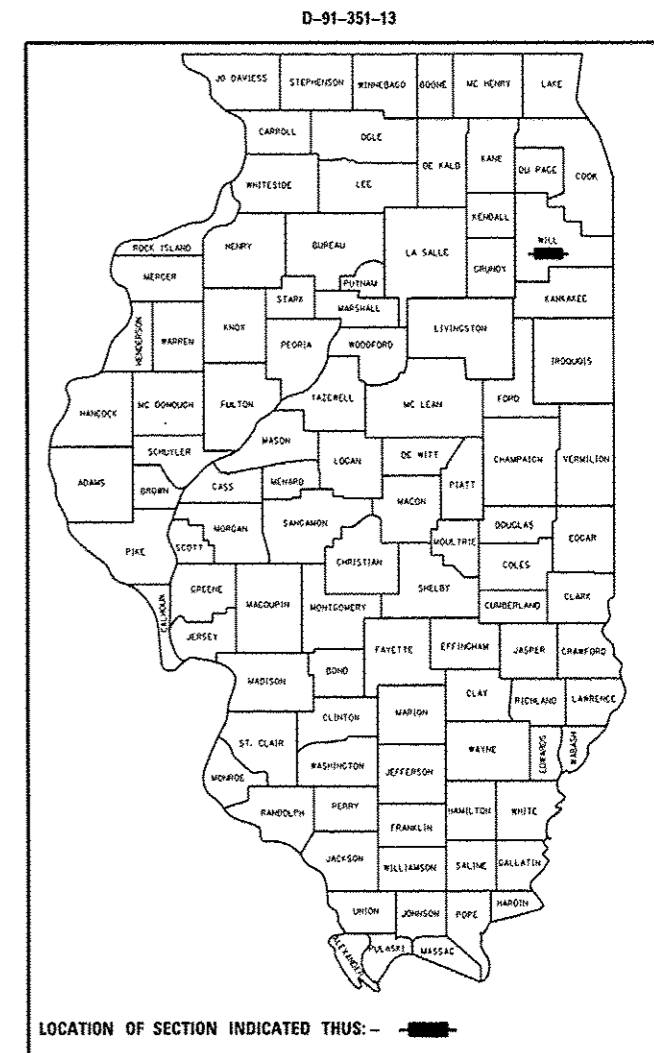
**PROPOSED
HIGHWAY PLANS**

FOR INDEX OF SHEETS, SEE SHEET NO. 2

THIS PROJECT IS LOCATED IN:
THE VILLAGE OF DIAMOND
THE VILLAGE OF HOMER GLEN
THE VILLAGE OF MANHATTAN
THE VILLAGE OF MONTGOMERY
THE VILLAGE OF NEW LENOX
THE VILLAGE OF OSWEGO
THE VILLAGE OF PLAINFIELD
THE CITY OF AURORA
THE CITY OF BRAIDWOOD
THE CITY OF CREST HILL
THE CITY OF JOLIET
THE CITY OF WILMINGTON

VARIOUS ROUTES
SECTION: 2013-031 RS
VARIOUS LOCATIONS IN WILL COUNTY
INTERMITTENT RESURFACING
WILL COUNTY
C-91-351-13

FOR GENERAL LOCATION MAP, SEE SHEET NO. 4



FULL SIZE PLANS HAVE BEEN PREPARED USING STANDARD ENGINEERING SCALES. REDUCED SIZED PLANS WILL NOT CONFORM TO STANDARD SCALES. IN MAKING MEASUREMENTS ON REDUCED PLANS, THE ABOVE SCALES MAY BE USED.

J.U.L.I.E.
JOINT UTILITY LOCATION INFORMATION FOR EXCAVATION
1-800-892-0123
OR 811

PROJECT ENGINEER: DANIEL WILGREEN (847) 705-4240
PROJECT MANAGER: KEN ENG (847) 705-4247

CONTRACT NO. 60W67

STATE OF ILLINOIS
DEPARTMENT OF TRANSPORTATION
DIVISION OF HIGHWAYS

SUBMITTED 5/20 20 13

John Furman
DEPUTY DIRECTOR OF HIGHWAYS, REGION ENGINEER

June 28 20 13
John D. Baranzoli, PE, BS
ENGINEER OF DESIGN AND ENVIRONMENT

June 28 20 13
Omer Osman, PE, BS
DIRECTOR OF HIGHWAYS, CHIEF ENGINEER

PRINTED BY THE AUTHORITY
OF THE STATE OF ILLINOIS