

F.A.U. RTE.	SECTION	COUNTY	TOTAL SHEETS	SHEET NO.
1008	13-00027-00-RS	COOK	19	1
ILLINOIS PROJECT				

CONTRACT NO. 63845

FOR INDEX OF SHEETS, SEE SHEET NO. 2

FOR INDEX OF HIGHWAY STANDARDS, SEE SHEET NO. 2

PROJECT LOCATED IN THE VILLAGE OF ROBBINS

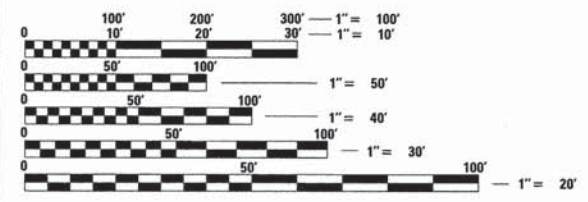
STATE OF ILLINOIS 08-02-13 LETTING ITEM 041
 DEPARTMENT OF TRANSPORTATION
 DIVISION OF HIGHWAYS
**PLANS FOR PROPOSED
 FEDERAL AID PROJECT**

FAU 1008 (CLAIRE BOULEVARD)
 139TH STREET TO KEDZIE AVENUE
 RESURFACING
 SECTION NO.: 13-00027-00-RS
 PROJECT NO.: M-4003(175)
 VILLAGE OF ROBBINS
 COOK COUNTY
 JOB NO.: C-91-226-13

TRAFFIC DATA
 CLAIRE BOULEVARD
 POSTED AND DESIGN SPEED = 30 MPH
 2010 ADT = 4,850

DESIGN DESIGNATION
 ROADWAY CLASSIFICATION: MAJOR COLLECTOR

BAXTER & WOODMAN, INC.
 STATE OF ILLINOIS - PROFESSIONAL DESIGN FIRM
 LICENSE NO. 184-001121
 EXPIRES 4/30/2015



FULL SIZE PLANS HAVE BEEN PREPARED USING STANDARD ENGINEERING SCALES. REDUCED SIZED PLANS WILL NOT CONFORM TO STANDARD SCALES. IN MAKING MEASUREMENTS ON REDUCED PLANS, THE ABOVE SCALES MAY BE USED.

J.U.L.I.E. DESIGN STAGE REQUEST
 DIG. No. X0670892



CONTACT JULIE AT 811 OR 800-892-0123 WITH THE FOLLOWING:
 COUNTY = COOK
 CITY-TWNSHP. = ROBBINS-BREMEN & WORTH
 SEC. & 1/4 SEC. NO. T36N, R13E
 48 HOURS (2 working days) BEFORE YOU DIG

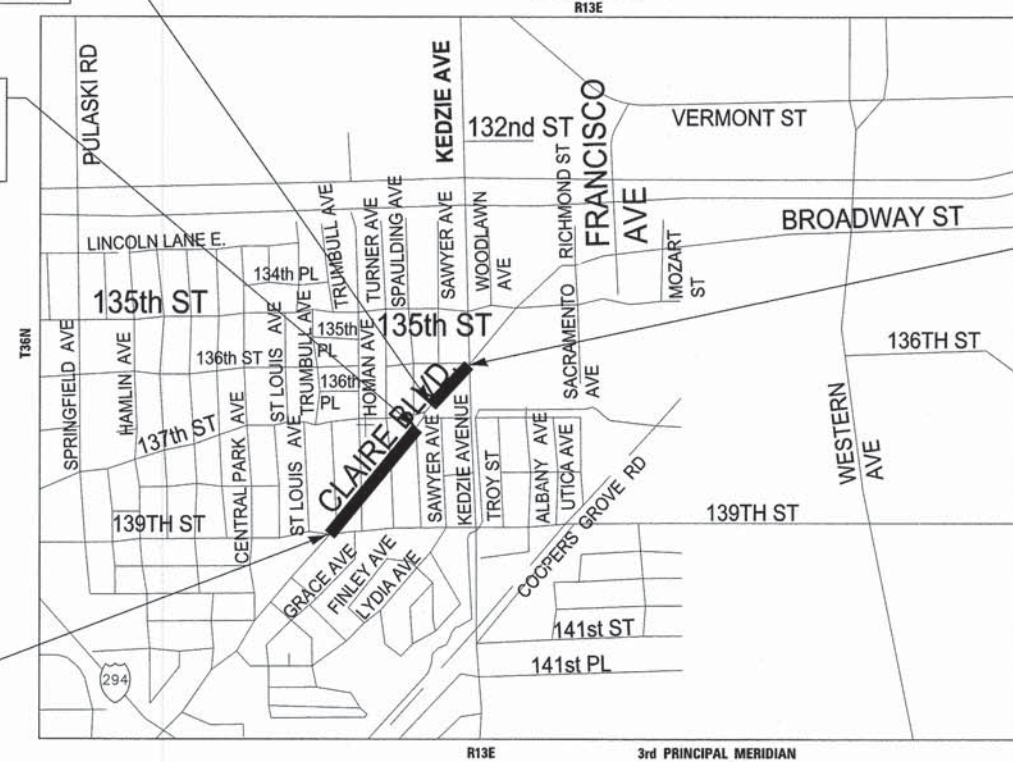
CONTRACT NO. 63845

FAU 1596 CLAIRE BOULEVARD
 OMISSION ENDS
 STA 68+00

FAU 1596 CLAIRE BOULEVARD
 OMISSION BEGINS
 STA 66+10

FAU 1596 CLAIRE BOULEVARD
 IMPROVEMENT BEGINS
 STA 49+22

LOCATION MAP
 (NOT TO SCALE)
 R13E

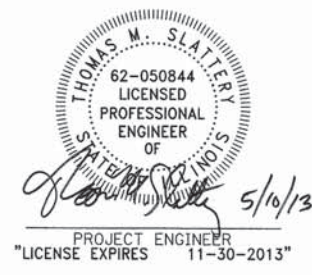


FAU 1596 CLAIRE BOULEVARD
 IMPROVEMENT ENDS
 STA 71+37



LOCATION OF SECTION INDICATED THIS: [Symbol]

BREMEN AND WORTH TOWNSHIPS
 GROSS LENGTH OF IMPROVEMENT = 2,215 LF OR 0.419 MILES
 NET LENGTH OF IMPROVEMENT = 2,025 LF OR 0.384 MILES



STATE OF ILLINOIS
 DEPARTMENT OF TRANSPORTATION
 DIVISION OF HIGHWAYS

APPROVED 5/10/13
Napoleon Haney
 VILLAGE OF ROBBINS
 VILLAGE ADMINISTRATOR

PASSED JUNE 6, 2013
C. J. Hour
 DISTRICT 4 ENGINEER OF
 LOCAL ROADS & STREETS

RELEASING FOR BID
 BASED ON LIMITED
 REVIEW May 31, 13
John Friedman
 DEPUTY DIRECTOR OF
 HIGHWAYS, REGION 1 ENGINEER

PRINTED BY THE AUTHORITY
 OF THE STATE OF ILLINOIS

COPYRIGHT © 2013 BY BAXTER & WOODMAN, INC. ...
 PROGRAM AND OFFICE ENGINEER: CHARLES RIDDLE, P.E. 708-705-4406 SCHAUMBURG, IL

HIGHWAY STANDARDS

000001-06	STANDARD SYMBOLS, ABBREVIATIONS AND PATTERNS
280001-07	TEMPORARY EROSION CONTROL SYSTEMS
424001-07	PERPENDICULAR CURB RAMPS FOR SIDEWALKS
424006-01	DIAGONAL CURB RAMPS FOR SIDEWALKS
424011-01	CORNER PARALLEL CURB RAMPS FOR SIDEWALKS
424016-01	MID-BLOCK CURB RAMPS FOR SIDEWALKS
424021-01	DEPRESSED CORNER FOR SIDEWALKS
424026-01	ENTRANCE/ALLEY PEDESTRIAN CROSSINGS
424031-01	MEDIAN PEDESTRIAN CROSSINGS
442201-03	CLASS C & D PATCHES
542301-03	PRECAST REINFORCED CONCRETE FLARED END SECTION
602001-02	CATCH BASIN, TYPE A
602011-02	CATCH BASIN, TYPE C
602401-03	MANHOLE, TYPE A
604001-03	FRAMES AND LIDS, TYPE 1
604036-02	GRATE TYPE B
606001-05	CONCRETE CURB TYPE B AND COMBINATION CONCRETE CURB AND GUTTER
701301-04	LANE CLOSURE, 2L, 2W, SHORT TIME OPERATIONS
701311-03	LANE CLOSURE, 2L, 2W MOVING OPERATIONS - DAY ONLY
701501-06	URBAN LANE CLOSURE, 2L, 2W UNDIVIDED
701701-08	URBAN LANE CLOSURE, MULTILANE INTERSECTION
701801-05	LANE CLOSURE, MULTILANE 1W OR 2W CROSSWALK OR SIDEWALK CLOSURE
701901-02	TRAFFIC CONTROL DEVICES
886001-01	DETECTOR LOOP INSTALLATIONS
886006-01	TYPICAL LAYOUTS FOR DETECTOR LOOPS

BENCHMARKS

BM #7	"X" SET IN NORTHWEST CORNER CONCRETE PAD FOR TRAFFIC SIGNAL CONTROLLER NORTHEAST CORNER OF CLAIRE BOULEVARD AND 139TH STREET. OFFSET STA 50+00, 42' RT ELEV = 604.83
BM #8	RAILROAD SPIKE SET IN EAST FACE OF POWER POLE, 2ND POLE NORTH OF CLAIRE BOULEVARD AND HOMAN AVENUE ON EAST SIDE OF CLAIRE BOULEVARD. OFFSET STA 56+37, 32' RT ELEV = 604.19
BM #9	TOP BOLT OF FIRE HYDRANT ON WEST SIDE OF CLAIRE BOULEVARD SOUTHWEST OF CLAIRE BOULEVARD AND 137TH STREET. OFFSET STA 65+32, 35' LT ELEV = 600.42
BM #10	RAILROAD SPIKE SET IN POWER POLE WEST SIDE OF CLAIR BOULEVARD 3RD POLE 5' OFF CLAIRE BOULEVARD AND KEDZIE AVENUE. OFFSET STA 74+87, 39' LT ELEV = 599.20
BM #11	TOP BOLT OF 1ST FIRE HYDRANT ON WEST SIDE OF CLAIRE BOULEVARD NORTHWEST OF CLAIRE BOULEVARD AND KEDZIE AVENUE. OFFSET STA 77+76, 35.5' LT ELEV = 601.19

INDEX OF SHEETS

SHEET NO.	TITLE
1	COVER SHEET
2	HIGHWAY STANDARDS AND INDEX OF SHEETS
3	GENERAL NOTES
4 - 5	SUMMARY OF QUANTITIES
6	TYPICAL SECTIONS
7 - 11	PLAN AND PROFILE CLAIRE BOULEVARD
12	BD-08 DETAILS FOR FRAMES AND LIDS ADJUSTMENT WITH MILLING
13	BD-24 CURB OR CURB AND GUTTER REMOVAL AND REPLACEMENT
14	BD-32 BUTT JOINT AND HMA TAPER DETAILS
15	TC-10 TRAFFIC CONTROL AND PROTECTION FOR SIDE ROADS, INTERSECTIONS, AND DRIVEWAYS
16	TC-13 DISTRICT 1 TYPICAL PAVEMENT MARKINGS
17	TC-22 ARTERIAL ROAD INFORMATION SIGN
18	TS-05 DISTRICT 1 STANDARD TRAFFIC SIGNAL DESIGN DETAILS
19	TS-07 DETECTOR LOOP INSTALLATION DETAIL FOR ROADWAY RESURFACING

DESIGNED BY: BAXTER & WOODMAN, INC.
 STATE OF ILLINOIS - PROFESSIONAL DESIGN FIRM
 LICENSE NO.: 184-00121 - EXPIRES 4/30/2025
 6/5/2023 14:45:00 PM
 I:\Projects\130097-GenNotes\130097-GenNotes\130097-GenNotes.sht



DESIGNED - TMS	REVISED -
DRAWN - KAR	REVISED -
CHECKED - TMS	REVISED -
DATE - 03-04-13	FILE - 130097-GenNotes.sht

STATE OF ILLINOIS
DEPARTMENT OF TRANSPORTATION

HIGHWAY STANDARDS, BENCHMARKS
AND INDEX OF SHEETS

SCALE: NONE STA. TO STA.

F.A.U. RTE.	SECTION	COUNTY	TOTAL SHEETS	SHEET NO.
1008	13-00027-00-RS	COOK	19	2
				CONTRACT NO. 63845
FED. ROAD DIST. NO. 2 ILLINOIS FED AID PROJECT M-4003175				

GENERAL NOTES

1. ALL CONSTRUCTION SHALL BE DONE IN ACCORDANCE WITH THE DETAILS IN THE PLANS, THE SPECIAL PROVISIONS INCLUDED IN THE CONTRACT DOCUMENTS, AND THE JANUARY 1, 2012 EDITION OF THE FOLLOWING STATE OF ILLINOIS SPECIFICATIONS: "THE STANDARD SPECIFICATIONS FOR ROAD AND BRIDGE CONSTRUCTION" (REFERRED TO AS THE "STANDARD SPECIFICATIONS"), THE "SUPPLEMENTAL SPECIFICATIONS AND RECURRING SPECIAL PROVISIONS", THE "MANUAL ON UNIFORM TRAFFIC CONTROL DEVICES FOR STREETS AND HIGHWAYS", THE "MANUAL OF TEST PROCEDURES FOR MATERIALS" AND THE "STANDARD SPECIFICATIONS FOR WATER AND SEWER MAIN CONSTRUCTION IN ILLINOIS".
2. UNDERGROUND UTILITY LOCATIONS HAVE NOT BEEN SHOWN ON THESE PLANS. THE CONTRACTOR SHALL HAVE THE RESPECTIVE UTILITY COMPANIES FIELD LOCATE ALL THEIR FACILITIES PRIOR TO BEGINNING CONSTRUCTION. THE CONTRACTOR SHALL ALSO VERIFY THE DEPTHS OF THE EXISTING UTILITIES IF NECESSARY. ANY RELOCATION OR LOWERING OF UTILITIES SHALL BE COORDINATED BY THE CONTRACTOR.
3. THE CONTRACTOR SHALL BE RESPONSIBLE FOR THE PROTECTION OF ALL UNDERGROUND OR SURFACE UTILITIES, INCLUDING SPRINKLER SYSTEMS, EVEN THOUGH THEY MAY NOT BE SHOWN ON THE PLANS. ANY UTILITY OR SPRINKLER SYSTEM THAT IS DAMAGED DURING CONSTRUCTION SHALL BE REPAIRED OR REPLACED AT THE CONTRACTOR'S EXPENSE TO THE SATISFACTION OF THE ENGINEER.
4. THE CONTRACTOR SHALL NOTIFY THE VILLAGE OF ROBBINS PUBLIC WORKS ADMINISTRATOR (708-254-2715) AT LEAST 48 HOURS IN ADVANCE OF BEGINNING WORK TO OBTAIN VILLAGE UTILITY LOCATIONS AND SHALL COORDINATE ALL CONSTRUCTION OPERATIONS WITH THE ENGINEER.
5. THE CONTRACTOR MAY OBTAIN MUNICIPAL WATER IN BULK, AT NO CHARGE, AS LONG AS THERE IS NOT A "WATERING BAN" IN EFFECT. THE INDISCRIMINATE USE OF FIRE HYDRANTS IS STRICTLY PROHIBITED. WATER FOR CONSTRUCTION SHALL BE METERED OR OTHERWISE ACCOUNTED FOR AND A DAILY LOG MAINTAINED. THE CONTRACTOR SHALL PROVIDE THE WATER TRUCK AND DRIVER REQUIRED TO OBTAIN AND TRANSPORT THIS WATER. THE VILLAGE OF ROBBINS RESERVES THE RIGHT TO RESTRICT OR REFUSE THE USE OF VILLAGE WATER IF DEEMED NECESSARY.
6. IT WILL BE THE CONTRACTOR'S RESPONSIBILITY TO NOTIFY THE ENGINEER, RESIDENTS, AND THE VILLAGE OF ROBBINS WHEN ACCESS TO THEIR DRIVEWAYS WILL BE TEMPORARILY CLOSED DUE TO CURB AND GUTTER AND/OR DRIVEWAY REPLACEMENT. THE CONTRACTOR SHALL DISTRIBUTE NOTICES PROVIDED BY THE ENGINEER TO RESIDENTS. EVERY EFFORT SHALL BE MADE TO ACCOMMODATE ACCESS TO THESE PROPERTIES INCLUDING KNOCKING ON DOORS WHEN DRIVEWAYS ARE ABOUT TO BE CLOSED.
7. ACCESS TO PRIVATE DRIVEWAYS SHALL BE PROVIDED AT ALL TIMES EXCEPT DURING ACTUAL CONSTRUCTION ADJACENT THERE TO. TEMPORARY RAMPS SHALL BE CONSTRUCTED AS NEEDED TO PROVIDE SUCH ACCESS, UTILIZING CRUSHED STONE OR CRUSHED GRAVEL. THIS WORK SHALL BE INCLUDED IN THE PAY ITEM COMBINATION CONCRETE CURB AND GUTTER REMOVAL AND REPLACEMENT.
8. EXISTING PAVEMENT, DRIVEWAY PAVEMENT, CURB AND GUTTER AND SIDEWALK TO REMAIN IN PLACE SHALL BE SAW CUT FULL DEPTH TO PROVIDE A NEAT VERTICAL FACE BETWEEN THE PROPOSED AND EXISTING AND SHALL BE INCLUDED IN THE PRICE OF THE APPROPRIATE REMOVAL PAY ITEM.
9. IN AREAS WHERE THE EXISTING DRIVEWAY, SIDEWALK, OR CURB AND GUTTER IS TO BE REMOVED AND REPLACED, THE REMOVAL AND DISPOSAL OF ANY ADDITIONAL MATERIAL REQUIRED TO ESTABLISH THE PROPOSED DRIVEWAY, SIDEWALK, OR CURB AND GUTTER SUBGRADE ELEVATION SHALL BE INCLUDED IN THE PAY ITEMS, DRIVEWAY PAVEMENT REMOVAL, SIDEWALK REMOVAL OR COMBINATION CURB AND GUTTER REMOVAL.
10. CURB AND GUTTER SHALL BE DEPRESSED AT DRIVEWAYS AND SIDEWALK RAMPS IN ACCORDANCE WITH THE IDOT HIGHWAY STANDARDS. SIDEWALK RAMPS FOR ACCESS FOR THE DISABLED SHALL BE PROVIDED AT THE PROPOSED CROSSWALKS IN ACCORDANCE WITH THE IDOT HIGHWAY STANDARDS OR AS DETERMINED BY THE ENGINEER.
11. THE CONTRACTOR SHALL PROVIDE AND INSTALL TWO (2) WEIGHTED SANDBAGS ON EACH TYPE I OR TYPE II BARRICADE USED. ONE (1) WEIGHTED SANDBAG SHALL BE PLACED ACROSS EACH BOTTOM RAIL.
12. PORTLAND CEMENT CONCRETE SIDEWALK SHALL BE THICKENED TO 6-INCHES AT LOCATIONS WHERE THE SIDEWALK CROSSES DRIVEWAYS. TRANSVERSE EXPANSION JOINTS 3/4" SHALL BE PLACED EVERY 50 FEET OR AS DETERMINED BY THE ENGINEER. TRANSVERSE CONTRACTION JOINTS SHALL BE PLACED EVERY 5-FEET. THIS WORK SHALL BE INCLUDED IN THE PAY ITEM PORTLAND CEMENT CONCRETE SIDEWALK 5 INCH.
13. A 1/2-INCH THICK EXPANSION JOINT SHALL BE PROVIDED AT THE JUNCTION OF THE DRIVEWAY APRON AND CURB, AND AT THE JUNCTION OF THE DRIVEWAY APRON AND THE SIDEWALK. THIS WORK WILL BE INCLUDED IN THE COST OF COMBINATION CONCRETE CURB AND GUTTER REMOVAL AND REPLACEMENT OR PORTLAND CEMENT CONCRETE SIDEWALK 5 INCH.

14. DETECTABLE WARNINGS SHALL BE CONSTRUCTED WITH THE INSTALLATION OF A CAST-IN-PLACE POLYMER COMPOSITE PANEL AND COMPLY WITH ADA REQUIREMENTS. THE DOMES LOCATED ON THE PANEL SHALL PARALLEL THE PAVEMENT CROSS WALK WITH THE CLOSEST EDGE LOCATED AT THE BACK OF CURB. THE PANEL COLOR SHALL BE ELECTED BY THE VILLAGE. INSTALLATION SHALL OCCUR IN ACCORDANCE WITH THE MANUFACTURERS RECOMMENDATIONS.
15. ALL CRACKS AND JOINTS SHALL BE CLEANED PRIOR TO FILLING THEM. THIS WORK SHALL BE INCLUDED IN THE ITEM "MIXTURE FOR CRACKS, JOINTS AND FLANGEWAYS."
16. THE PRIME COAT APPLICATION RATE SHALL BE 0.1 GAL/SY.
17. CONCRETE DRIVEWAY PAVEMENT SHALL NOT BE REMOVED FOR CURB AND GUTTER FORMING PURPOSES UNLESS DIRECTED BY THE ENGINEER. ANY DAMAGE TO CONCRETE DRIVEWAYS SHALL BE REPAIRED AT THE CONTRACTOR'S EXPENSE.
18. ALL CONSTRUCTION PERSONNEL WILL BE REQUIRED TO WEAR A FLUORESCENT VEST PER ARTICLE 701.12 AND 701.13 OF THE STANDARD SPECIFICATIONS AT ALL TIMES WHILE ON THE CONSTRUCTION SITE. COMPLIANCE WITH THIS REQUIREMENT SHALL BE INCLUDED IN THE CONTRACT.
19. THE CONTRACTOR SHALL PROTECT AND CAREFULLY PRESERVE ALL SECTION OR SUBSECTION MONUMENTS OR PROPERTY OR REFERENCE MARKS UNTIL THE OWNERS, HIS AGENT OR AN AUTHORIZED SURVEYOR HAS WITNESSED OR OTHERWISE REFERENCED THEIR LOCATIONS.
20. AGGREGATE WEDGE SHOULDER, TYPE B SHALL MEET THE REQUIREMENTS OF ARTICLE 1004.4 OF THE STANDARD SPECIFICATIONS. RECLAIMED ASPHALT PAVEMENT (RAP) SHALL NOT BE ALLOWED AS AN ACCEPTABLE MATERIAL FOR AGGREGATE WEDGE SHOULDER, TYPE B.
21. CONNECTION OF PROPOSED STORM SEWER INTO EXISTING STORM SEWER OR EXISTING STORM SEWER STRUCTURES SHALL BE INCLUDED IN THE COST OF STORM SEWERS.
22. THE CONTRACTOR SHALL REPLACE ALL STREET SIGNS AND MAIL BOXES REMOVED DURING CONSTRUCTION AS NEAR AS POSSIBLE TO THEIR ORIGINAL LOCATION OR AS DETERMINED BY THE ENGINEER. THIS WORK SHALL BE INCLUDED IN THE CONTRACT.
23. BEFORE STARTING ANY EXCAVATION, THE CONTRACTOR SHALL CALL "JULIE" AT 800-892 0123 FOR FIELD LOCATIONS OF BURIED ELECTRIC, TELEPHONE AND GAS FACILITIES. (48 HOURS NOTIFICATION IS REQUIRED)
24. MATERIALS RESULTING FROM THE REMOVAL OF PAVEMENT, DRIVEWAYS, CURB AND GUTTER, HOT-MIX ASPHALT SURFACES, ETC. SHALL BE REMOVED AT THE END OF EACH DAY TO AN APPROVED SITE. IN THE JUDGEMENT OF THE ENGINEER, SHOULD IT BE NECESSARY TO REMOVE SUCH MATERIALS, THE ENGINEER WILL HAVE THE MATERIAL REMOVED BY THE LOCAL AGENCY. THE COST OF THIS WORK SHALL BE CALCULATED IN ACCORDANCE WITH SECTION 109.04 AND SHALL BE DEDUCTED FROM THE FINAL PAYMENT.
25. THE CONTRACTOR SHALL LIMIT THE WORK TO ONE SIDE OF THE STREET UNLESS AS DIRECTED BY THE ENGINEER.
26. THE LOCATIONS OF THE CLASS D PATCHES SHALL BE DETERMINED BY THE ENGINEER IN THE FIELD.
27. THE DAY'S PAVING OPERATION SHALL RESULT IN A SINGLE TRANSVERSE JOINT. ANY COLD LONGITUDINAL JOINTS WILL NOT BE ACCEPTED. PROVIDING A SINGLE TRANSVERSE JOINT SHALL BE ACCOMPLISHED BY PAVING ONE LANE OF SUFFICIENT LENGTH THAT WILL ALLOW FOR THE PAVING OF THE ADJACENT LANE IN THE SAME DAY.
28. ANY ANTI-STRIPPING ADDITIVE REQUIRED SHALL BE INCLUDED IN THE COST OF THE SURFACE COURSE.
29. THE CONTRACTOR SHALL NOTIFY IDOT BUREAU OF MATERIALS (PHONE 847-705-4337) AT LEAST 24 HOURS PRIOR TO THE PLACEMENT OF HOT-MIX ASPHALT OR PORTLAND CEMENT CONCRETE.
30. NEW OR REPLACEMENT CLOSED LIDS SHALL BE STAMPED TO INDICATE THE STRUCTURE TYPE. STORM LIDS SHALL BE STAMPED WITH "STORM", SANITARY LIDS SHALL BE STAMPED WITH "SANITARY" AND WATER VALVE VAULT LIDS SHALL BE STAMPED WITH "WATER". STAMPING SHALL BE INCLUDED IN THE COST OF THE NEW LID. ALL NEW TYPE 1 OPEN LIDS SHALL BE BICYCLE SAFE.

Copyright © 2013 BY BAXTER A. WOODMAN, INC.
 STATE OF ILLINOIS - PROFESSIONAL DESIGN FIRM
 LICENSE NO. - 84-00121 - EXPIRES 4/30/2015
 6/5/2013 144650 PM
 I:\Crystal Lake\ROBBINS\130097-40-Clsr - Bv\CAD\Drawings\Clr - Nor\130097-GenNotes.sht



DESIGNED - TMS	REVISED -
DRAWN - KAR	REVISED -
CHECKED - TMS	REVISED -
DATE - 03-04-13	FILE - 130097-GenNotes.sht

STATE OF ILLINOIS
DEPARTMENT OF TRANSPORTATION

GENERAL NOTES

SCALE: NONE

STA. TO STA.

F.A.U. RTE.	SECTION	COUNTY	TOTAL SHEETS	SHEET NO.
1008	13-00027-00-RS	COOK	19	3
CONTRACT NO. 63845				
FED. ROAD DIST. NO. 2 ILLINOIS FED AID PROJECT M-4003(175)				

COPYRIGHT © 2013 BY BAXTER & WOODMAN, INC.
 STATE OF ILLINOIS - PROFESSIONAL DESIGN FIRM
 No. - 03-00097-50TY.sht
 560kcr
 6/5/2013
 \\cor2baxwood.com\projects\03-00097-50-Tyre\Drawings\Coire North\030097-50TY.sht



DESIGNED -	TMS	REVISED -	-
DRAWN -	KAR	REVISED -	-
CHECKED -	TMS	REVISED -	-
DATE -	03-04-13	FILE -	130097-SQTY.sht

Δ INDICATES ITEM COVERED BY SPECIAL PROVISION
 # INDICATES SPECIALTY ITEM

STATE OF ILLINOIS
DEPARTMENT OF TRANSPORTATION

SUMMARY OF QUANTITIES

SCALE: STA. TO STA.

F.A.U. RTE.	SECTION	COUNTY	TOTAL SHEETS	SHEET NO.
100B	13-00027-00-RS	COOK	19	4
FED. ROAD DIST. NO. 2 ILLINOIS FED AID PROJECT M-4003(175)			CONTRACT NO. 63845	

SUMMARY OF QUANTITIES				CONSTRUCTION TYPE CODE
				0005
ITEM NO.	ITEMS	UNIT	TOTAL QUANTITY	QUANTITY
20200100	EARTH EXCAVATION	CU YD	51	51
20800150	TRENCH BACKFILL	CU YD	128	128
21301048	EXPLORATION TRENCH 48" DEPTH	FOOT	20	20
21400100	GRADING AND SHAPING DITCHES	FOOT	200	200
28000500	INLET AND PIPE PROTECTION	EACH	1	1
28000510	INLET FILTERS	EACH	7	7
35101600	AGGREGATE BASE COURSE, TYPE B 4"	SQ YD	316	316
40600200	BITUMINOUS MATERIALS (PRIME COAT)	TON	3.9	3.9
40600300	AGGREGATE (PRIME COAT)	TON	20	20
40600400	MIXTURE FOR CRACKS, JOINTS, AND FLANGEWAYS	TON	2	2
40600827	POLYMERIZED LEVELING BINDER (MACHINE METHOD), IL-4.75, N50	TON	397	397
40600982	HOT-MIX ASPHALT SURFACE REMOVAL - BUTT JOINT	SQ YD	191	191
40603335	HOT-MIX ASPHALT SURFACE COURSE, MIX "D", N50	TON	792	792
40800050	INCIDENTAL HOT-MIX ASPHALT SURFACING	TON	5	5
42001300	PROTECTIVE COAT	SQ YD	331	331
42400200	PORTLAND CEMENT CONCRETE SIDEWALK 5 INCH	SQ FT	2841	2841
42400800	DETECTABLE WARNINGS	SQ FT	40	40
44000157	HOT-MIX ASPHALT SURFACE REMOVAL, 2"	SQ YD	9418	9418
44000500	COMBINATION CURB AND GUTTER REMOVAL	FOOT	15	15
44000600	SIDEWALK REMOVAL	SQ FT	1812	1812
44201785	CLASS D PATCHES, TYPE I, 12 INCH	SQ YD	188	188
44201789	CLASS D PATCHES, TYPE II, 12 INCH	SQ YD	377	377
44201794	CLASS D PATCHES, TYPE III, 12 INCH	SQ YD	565	565
44201796	CLASS D PATCHES, TYPE IV, 12 INCH	SQ YD	754	754
48102100	AGGREGATE WEDGE SHOULDER, TYPE B	TON	51	51
54213657	PRECAST REINFORCED CONCRETE FLARED END SECTIONS 12"	EACH	1	1
550A2320	STORM SEWERS, RUBBER GASKET, CLASS A, TYPE 1 12"	FOOT	607	607

COPYRIGHT © 2013 BY BAXTER & WOODMAN, INC.
 STATE OF ILLINOIS - PROFESSIONAL DESIGN FIRM
 LICENSE NO. - 184-0021 - EXPIRES 4/30/2015
 5600 N. WOODSTOCK AVENUE, SUITE 100, CHICAGO, IL 60647-1000
 6/25/2013 11:56:07 AM



DESIGNED - TMS	REVISED -
DRAWN - KAR	REVISED -
CHECKED - TMS	REVISED -
DATE - 03-04-13	FILE - 130097-SQTY.sht

**STATE OF ILLINOIS
DEPARTMENT OF TRANSPORTATION**

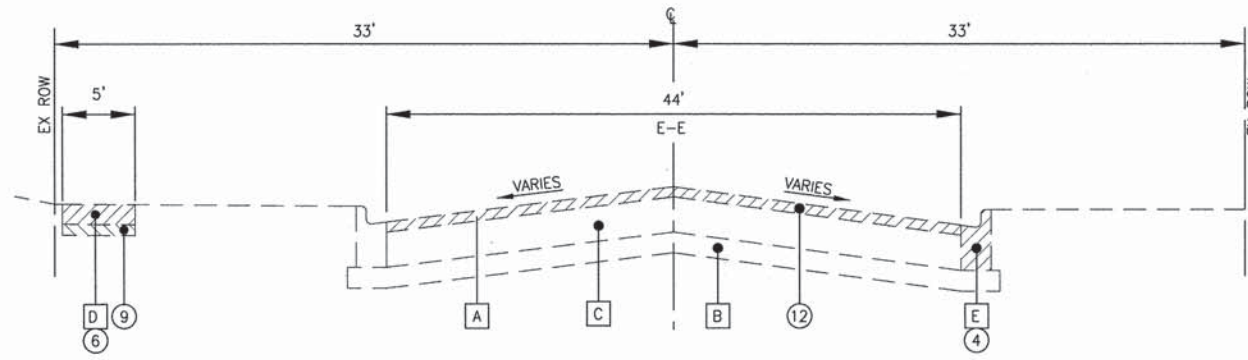
SUMMARY OF QUANTITIES

SCALE: STA. TO STA.

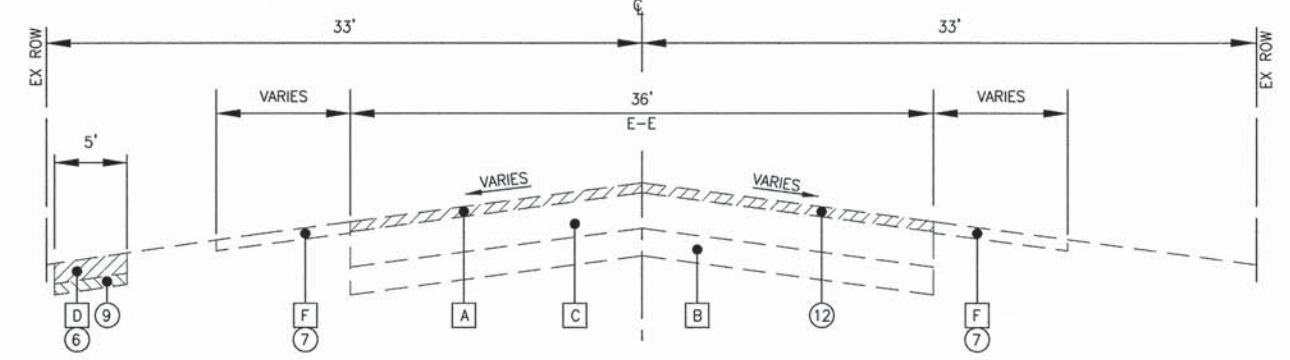
F.A.U. RTE.	SECTION	COUNTY	TOTAL SHEETS	SHEET NO.
100B	13-00027-00-R5	COOK	19	5
FED. ROAD DIST. NO. 2 ILLINOIS FED. AID PROJECT M-4003(175)				

SUMMARY OF QUANTITIES				CONSTRUCTION TYPE CODE 0005
ITEM NO.	ITEMS	UNIT	TOTAL QUANTITY	QUANTITY
60200105	CATCH BASINS, TYPE A, 4'-DIAMETER, TYPE 1 FRAME, OPEN LID	EACH	1	1
60206905	CATCH BASINS, TYPE C, TYPE 1 FRAME, OPEN LID	EACH	7	7
60218400	MANHOLES, TYPE A, 4'-DIAMETER, TYPE 1 FRAME, CLOSED LID	EACH	2	2
60260100	INLETS TO BE ADJUSTED	EACH	1	1
60406100	FRAMES AND LIDS, TYPE 1, CLOSED LID	EACH	9	9
60500060	REMOVING INLETS	EACH	1	1
60603500	COMBINATION CONCRETE CURB AND GUTTER, TYPE B-6.06	FOOT	15	15
67100100	MOBILIZATION	L SUM	1	1
70102620	TRAFFIC CONTROL AND PROTECTION, STANDARD 701501	L SUM	1	1
70102635	TRAFFIC CONTROL AND PROTECTION, STANDARD 701701	L SUM	1	1
70102640	TRAFFIC CONTROL AND PROTECTION, STANDARD 701801	L SUM	1	1
70300100	SHORT TERM PAVEMENT MARKING	FOOT	1868	1868
70301000	WORK ZONE PAVEMENT MARKING REMOVAL	SQ FT	312	312
# 78000100	THERMOPLASTIC PAVEMENT MARKING - LETTERS AND SYMBOLS	SQ FT	37	37
# 78000200	THERMOPLASTIC PAVEMENT MARKING - LINE 4"	FOOT	10065	10065
# 78000400	THERMOPLASTIC PAVEMENT MARKING - LINE 6"	FOOT	448	448
# 78000600	THERMOPLASTIC PAVEMENT MARKING - LINE 12"	FOOT	297	297
# 78000650	THERMOPLASTIC PAVEMENT MARKING - LINE 24"	FOOT	95	95
Δ # 88600600	DETECTOR LOOP REPLACEMENT	FOOT	147	147
Δ X2020110	GRADING AND SHAPING SHOULDERS	UNIT	41	41
Δ X6026050	SANITARY MANHOLES TO BE ADJUSTED	EACH	3	3
Δ X6030310	FRAMES AND LIDS TO BE ADJUSTED (SPECIAL)	EACH	6	6
Δ XX006947	HOT-MIX ASPHALT DRIVEWAY PAVEMENT REMOVAL AND REPLACEMENT	SQ YD	145	145
Δ XX007278	PARKWAY RESTORATION	SQ YD	142	142
Δ Z0004562	COMBINATION CONCRETE CURB AND GUTTER REMOVAL AND REPLACEMENT	FOOT	65	65
Δ Z0030850	TEMPORARY INFORMATION SIGNING	SQ FT	154.2	154.2

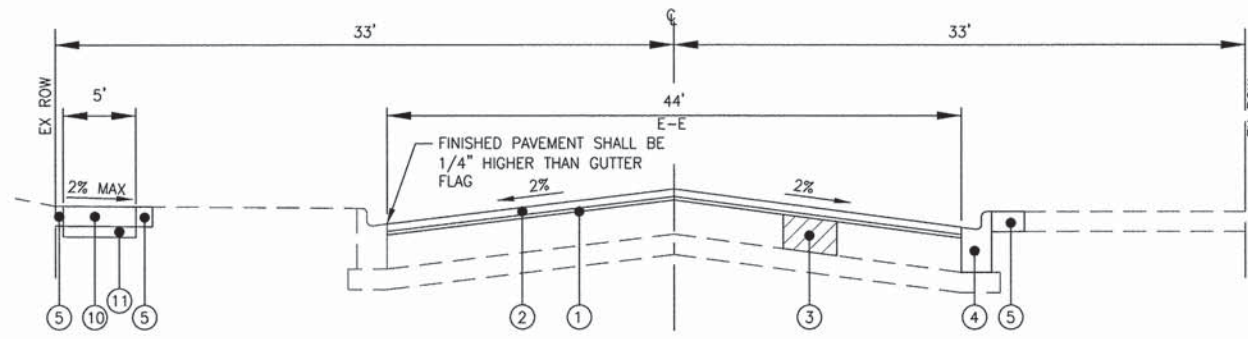
Δ INDICATES ITEM COVERED BY SPECIAL PROVISION
 # INDICATES SPECIALTY ITEM



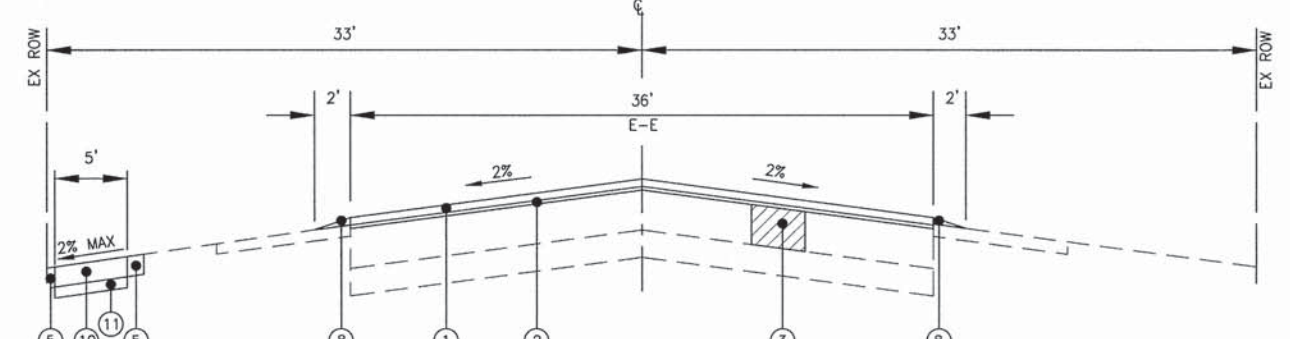
EXISTING TYPICAL SECTION
CLARE BOULEVARD
STA 49+22 TO STA 52+20



EXISTING TYPICAL SECTION
CLARE BOULEVARD
STA 52+20 TO STA 66+10
STA 68+00 TO STA 71+37



PROPOSED TYPICAL SECTION
CLARE BOULEVARD
STA 49+22 TO STA 52+20



PROPOSED TYPICAL SECTION
CLARE BOULEVARD
STA 52+20 TO STA 66+10
STA 68+00 TO STA 71+37

LEGEND

EXISTING

- A** EXISTING HOT-MIX ASPHALT SURFACE
- B** EXISTING AGGREGATE BASE
- C** EXISTING PCC BASE COURSE
- D** EXISTING SIDEWALK
- E** EXISTING COMBINATION CONCRETE CURB AND GUTTER
- F** EXISTING AGGREGATE SHOULDER

PROPOSED

- 1** POLYMERIZED LEVELING BINDER (MACHINE METHOD), IL-4.75, N50 - 3/4"
- 2** HOT-MIX ASPHALT SURFACE COURSE, MIX "D", N50 - 1 1/2"
- 3** CLASS D PATCHES - 12" (AS DETERMINED BY THE ENGINEER)
- 4** COMBINATION CONCRETE CURB AND GUTTER REMOVAL AND REPLACEMENT (AS DETERMINED BY THE ENGINEER)
- 5** PARKWAY RESTORATION
- 6** SIDEWALK REMOVAL (AS DETERMINED BY THE ENGINEER)
- 7** GRADING AND SHAPING SHOULDERS (AS DETERMINED BY THE ENGINEER)
- 8** AGGREGATE WEDGE SHOULDER, TYPE B
- 9** EARTH EXCAVATION
- 10** PCC SIDEWALK, 5-INCH (AS DETERMINED BY THE ENGINEER)
- 11** AGGREGATE BASE COURSE, TYPE B, 4"
- 12** HMA SURFACE REMOVAL, 2"

HOT-MIX ASPHALT MIXTURE REQUIREMENTS

NOTE: THE CONTRACTOR SHALL MILL BEFORE PATCHING

ITEM	AIR VOIDS @ Ndes
RESURFACING	
HOT-MIX ASPHALT SURFACE COURSE, MIX "D", N50 (IL 9.5mm), 1 1/2"	4% @ 50 Gyr.
POLYMERIZED LEVELING BINDER (MACHINE METHOD), IL-4.75, N50, 3/4"	3.5% @ 50 Gyr.
DRIVEWAYS	
HOT-MIX ASPHALT SURFACE COURSE, MIX "D", N50 (IL 9.5mm), 3" (2 Lifts)	4% @ 50 Gyr.
PATCHING	
CLASS D PATCHES (HMA BINDER IL-19 mm), 12" (3 Lifts)	4% @ 70 Gyr.

THE UNIT WEIGHT USED TO CALCULATE ALL HMA SURFACE MIXTURE QUANTITIES IS 112 LBS/SQ YD/IN.

THE "AC TYPE" FOR POLYMERIZED HMA MIXES SHALL BE "SBS/SBR PG 76-22" AND FOR NON-POLYMERIZED HMA THE "AC TYPE" SHALL BE "PG 64-22" UNLESS MODIFIED BY THE DISTRICT ONE SPECIAL PROVISIONS.

FOR "PERCENT OF RAP" SEE SPECIAL PROVISIONS.

EXISTING PAVEMENT DATA

CORE NUMBER	HMA THICKNESS	PCC BASE THICKNESS
B-17	3.25	9.25
B-18	5.5	8
B-19	6.5	8.5
B-20	4.5	10.5
B-21	4.5	10.5
B-22	6.25	7.5
B-23	5	10
B-24	5.5	10.25

DESIGNED BY: BAXTER & WOODMAN, INC.
 STATE OF ILLINOIS - PROFESSIONAL DESIGN FIRM
 LICENSE NO. 184-00121 - EXPIRES 4/30/2015
 6/5/2013 14:50:09 PM
 I:\Crystal Lake\130097-00-Claire Blvd\Crystal Lake\130097-00-Claire Blvd\Crystal Lake\130097-00-Claire Blvd\130097-TypSec.sht



DESIGNED - TMS	REVISED -
DRAWN - KAR	REVISED -
CHECKED - TMS	REVISED -
DATE - 03-04-13	FILE - 130097-TypSec.sht

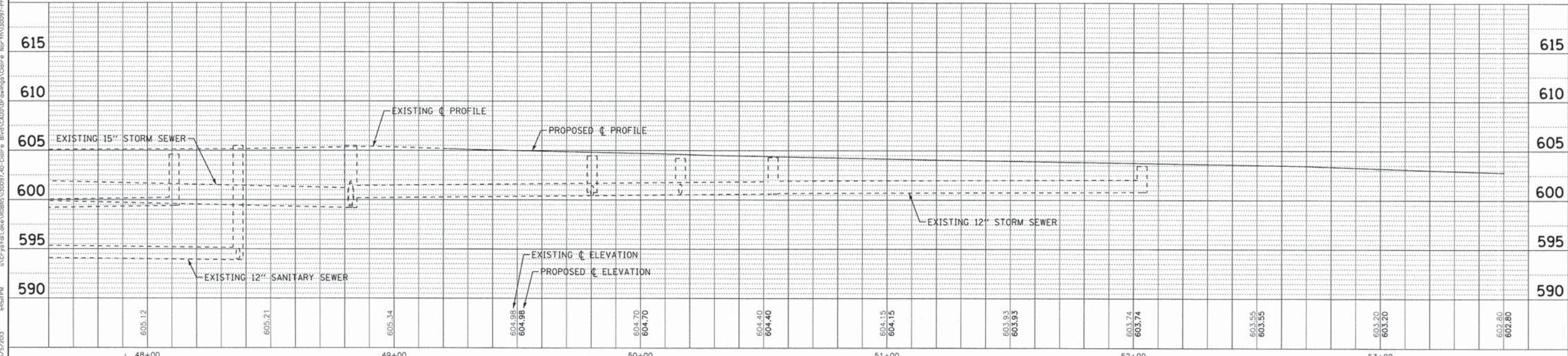
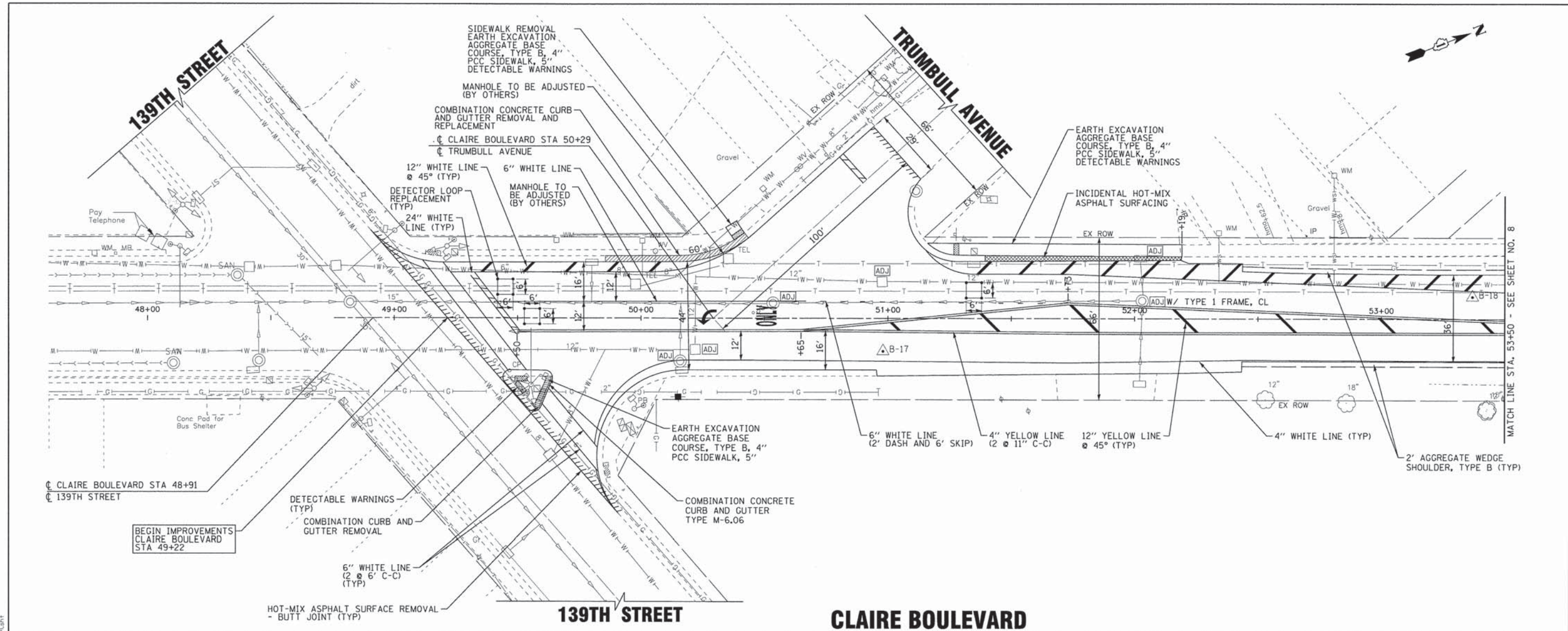
STATE OF ILLINOIS
DEPARTMENT OF TRANSPORTATION

TYPICAL SECTIONS

SCALE: NONE

STA. TO STA.

F.A.U. RTE.	SECTION	COUNTY	TOTAL SHEETS	SHEET NO.
100B	13-00027-00-RS	COOK	19	6
CONTRACT NO. 63845				
FED. ROAD DIST. NO. 2 ILLINOIS FED AID PROJECT M-4003(175)				



DESIGNED - TMS	REVISED -
DRAWN - KAR	REVISED -
CHECKED - TMS	REVISED -
DATE - 03-04-13	FILE - 130097-PPI.shx

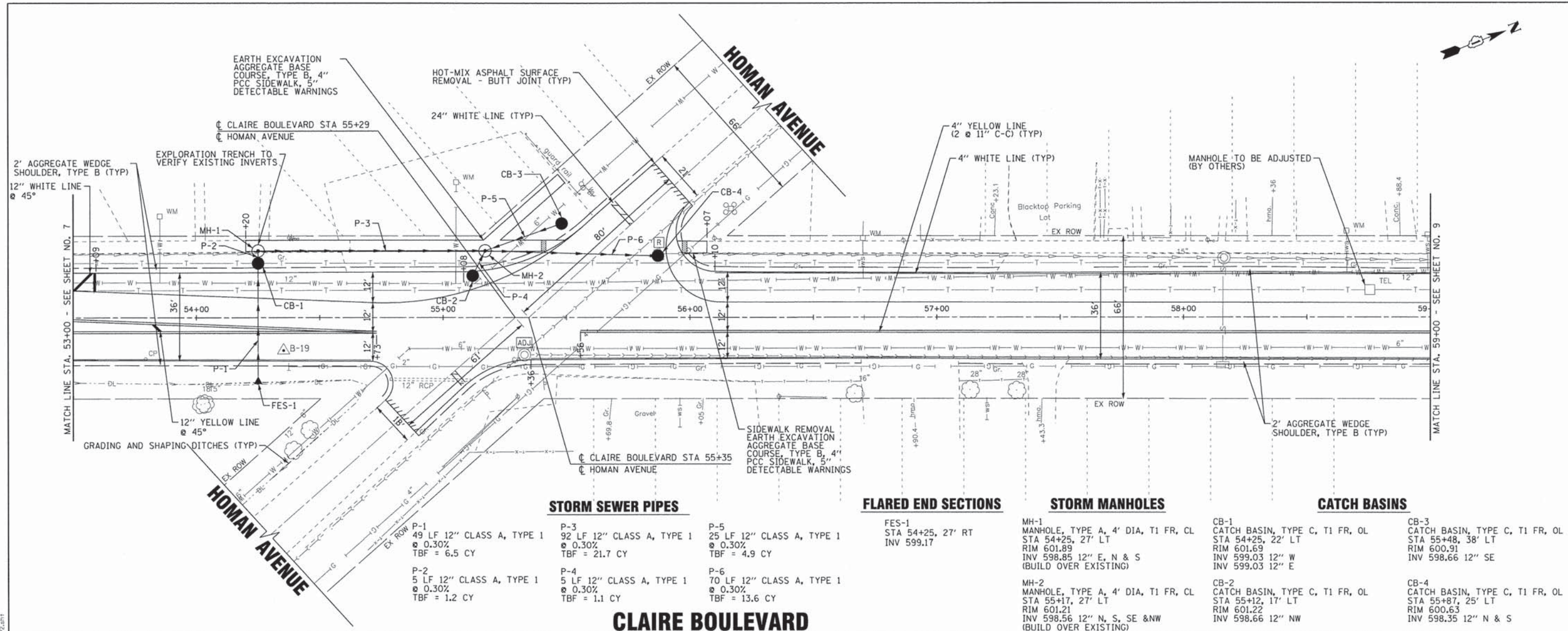
STATE OF ILLINOIS
DEPARTMENT OF TRANSPORTATION

SCALE: H: 1"=20' V: 1"=5'

PLAN AND PROFILE CLAIRE BOULEVARD	
F.A.J. RTE. 1008	SECTION 13-00027-00-RS
COUNTY COOK	TOTAL SHEETS 19
SHEET NO. 7	
CONTRACT NO. 63845	

FED. ROAD DIST. NO. 2 [ILLINOIS]	FED AID PROJECT M-4003(175)
----------------------------------	-----------------------------

COPYRIGHT © 2013 BY BAXTER & WOODMAN, INC.
 STATE LICENSE NO. 184-00021 - EXPIRES 4/30/2013
 5600-CR 6/5/2003
 I:\C:\p\130097-PPI\Drawings\130097-00-Claire Blvd\CADD\Drawings\Claire No 11\130097-PPI.shx



STORM SEWER PIPES

- P-1
49 LF 12" CLASS A, TYPE 1
@ 0.30%
TBF = 6.5 CY
- P-2
5 LF 12" CLASS A, TYPE 1
@ 0.30%
TBF = 1.2 CY
- P-3
92 LF 12" CLASS A, TYPE 1
@ 0.30%
TBF = 21.7 CY
- P-4
5 LF 12" CLASS A, TYPE 1
@ 0.30%
TBF = 1.1 CY
- P-5
25 LF 12" CLASS A, TYPE 1
@ 0.30%
TBF = 4.9 CY
- P-6
70 LF 12" CLASS A, TYPE 1
@ 0.30%
TBF = 13.6 CY

FLARED END SECTIONS

FES-1
STA 54+25, 27' RT
INV 599.17

STORM MANHOLES

MH-1
MANHOLE, TYPE A, 4' DIA, T1 FR, CL
STA 54+25, 27' LT
RIM 601.89
INV 598.85 12" E, N & S
(BUILD OVER EXISTING)

MH-2
MANHOLE, TYPE A, 4' DIA, T1 FR, CL
STA 55+17, 27' LT
RIM 601.21
INV 598.56 12" N, S, SE & NW
(BUILD OVER EXISTING)

CATCH BASINS

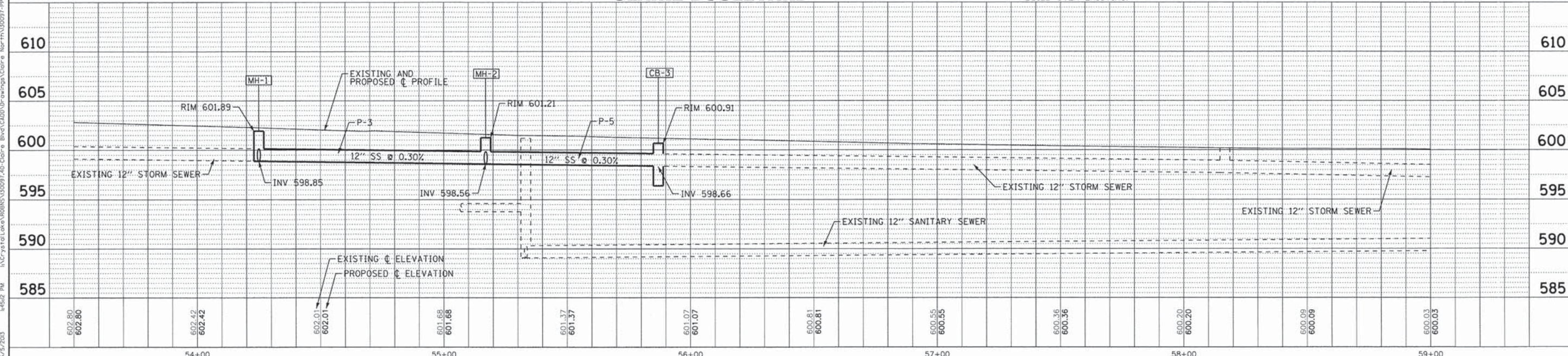
CB-1
CATCH BASIN, TYPE C, T1 FR, OL
STA 54+25, 22' LT
RIM 601.69
INV 599.03 12" W
INV 599.03 12" E

CB-2
CATCH BASIN, TYPE C, T1 FR, OL
STA 55+17, 17' LT
RIM 601.22
INV 598.66 12" NW

CB-3
CATCH BASIN, TYPE C, T1 FR, OL
STA 55+48, 38' LT
RIM 600.91
INV 598.66 12" SE

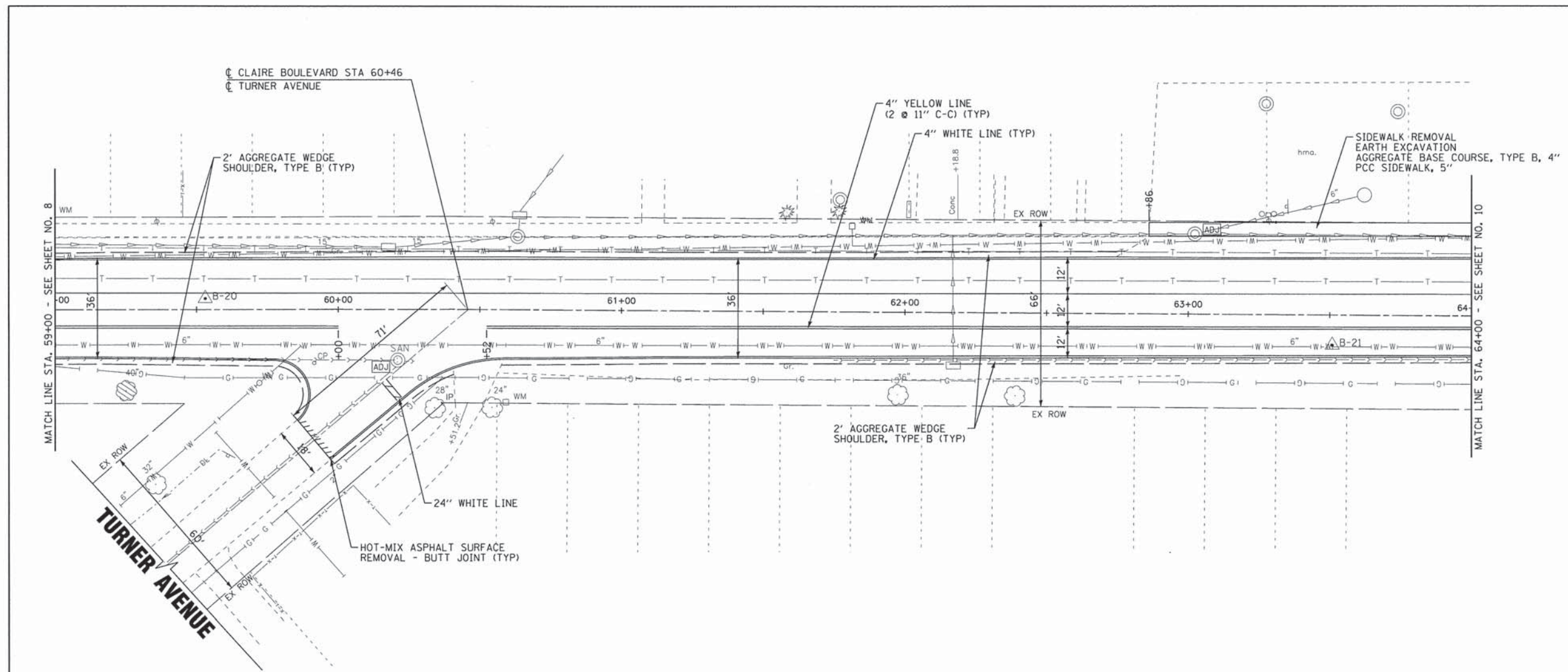
CB-4
CATCH BASIN, TYPE C, T1 FR, OL
STA 55+87, 25' LT
RIM 600.63
INV 598.35 12" N & S

CLAIRE BOULEVARD

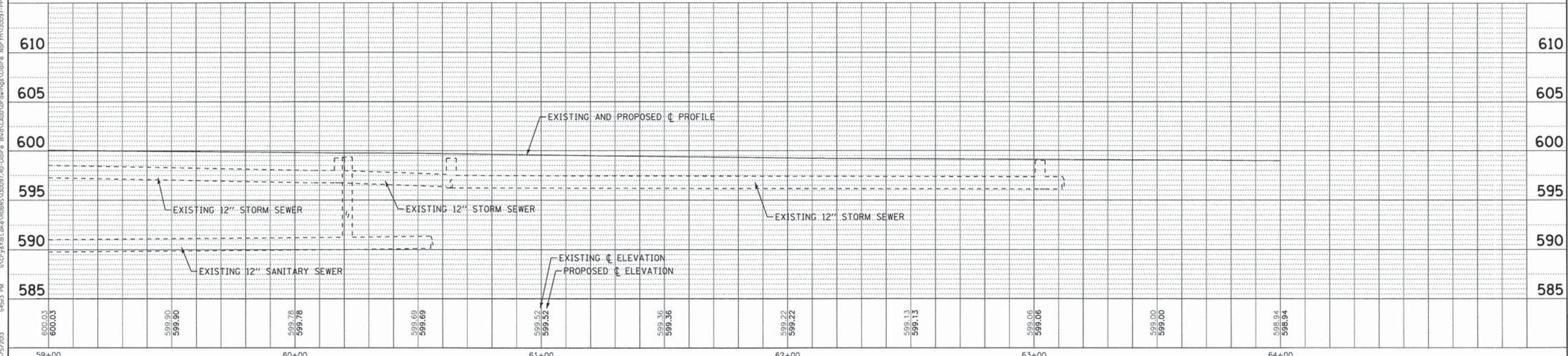


	DESIGNED - TMS	REVISED -	<p align="center">STATE OF ILLINOIS DEPARTMENT OF TRANSPORTATION</p>	<p align="center">PLAN AND PROFILE CLAIRE BOULEVARD</p>		F.A.U. RTE.	SECTION	COUNTY	TOTAL SHEETS	SHEET NO.
	DRAWN - KAR	REVISED -		SCALE: H: 1"=20' V: 1"=5'	1008	13-00027-00-RS	COOK	19	8	
CHECKED - TMS	REVISED -	FILE - 130097-PP2.shx	STA. 53+50	TO STA. 59+00	FED. ROAD DIST. NO. 2 ILLINOIS FED AID PROJECT M-4003(175)		CONTRACT NO. 63845			
DATE - 03-04-13										

COPYRIGHT © 2013 BY BAXTER & WOODMAN, INC.
 LICENSE NO. 184-00201 EXPRES 4/30/2013
 5600-00
 6/5/2013 11:45:52 PM
 I:\CrystalLake\RRBS\130097 AD-Claire Blvd\CADD\Drawings\Claire Nor\130097-PP2.dwg
 User: Nor\Bax, Bax, Def\out.dwg
 130097 Nor\130097-PP2.dwg



CLAIRE BOULEVARD



COPYRIGHT © 2013 BY BAXTER & WOODMAN, INC.
 LICENSE NO. 184-00021 - EXPIRES 4/30/2015
 5600-cr 6/5/2013
 I:\C\y\of\Low\A\B\N\130097-40-Claire B\Plan\Drawings\Claire No. 130097-PP3.dwg
 130097-PP3.dwg



DESIGNED - TMS	REVISED -
DRAWN - KAR	REVISED -
CHECKED - TMS	REVISED -
DATE - 03-04-13	FILE - 130097-PP3.sh+

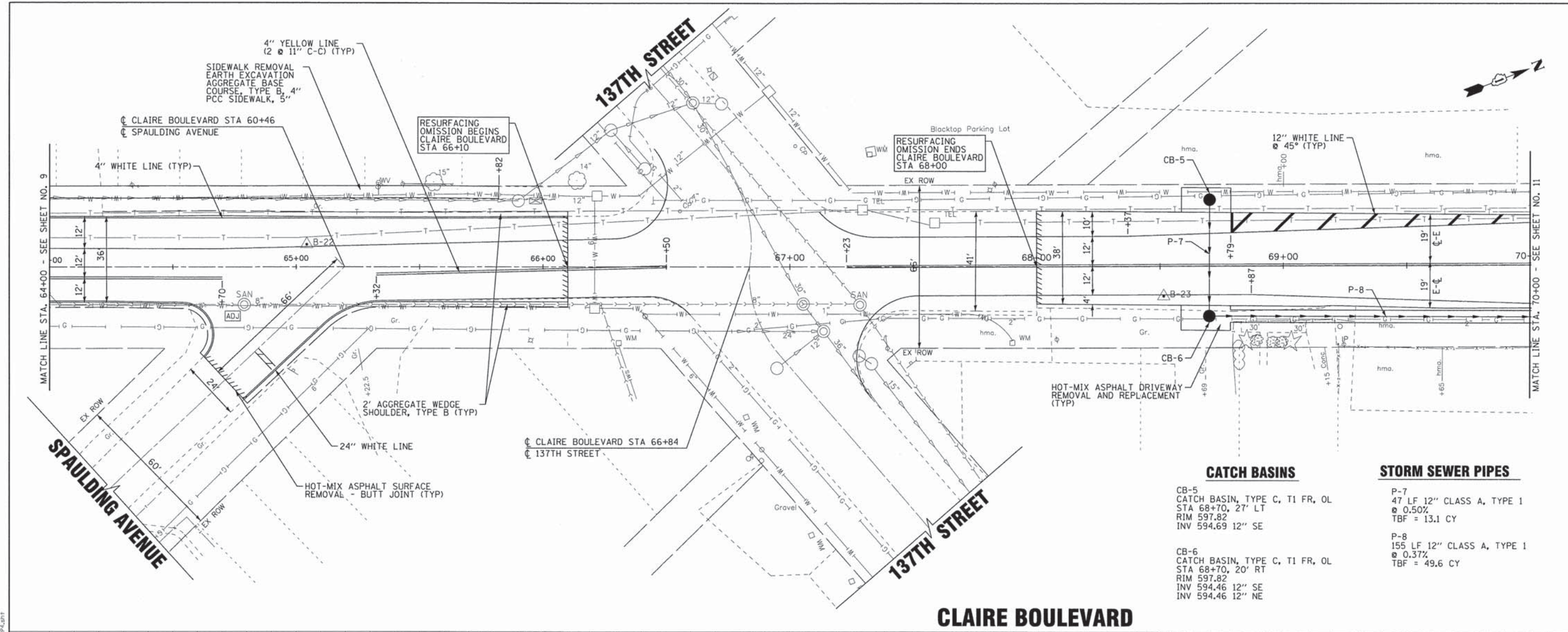
STATE OF ILLINOIS
DEPARTMENT OF TRANSPORTATION

PLAN AND PROFILE
CLAIRE BOULEVARD

SCALE: H: 1"=20' V: 1"=5'

STA. 59+00 TO STA. 64+00

F.A.U. RTE.	SECTION	COUNTY	TOTAL SHEETS	SHEET NO.
1008	13-00027-00-RS	COOK	19	9
FED. ROAD DIST. NO. 2 ILLINOIS FED AID PROJECT M-40031751			CONTRACT NO. 63845	



CATCH BASINS

CB-5
CATCH BASIN, TYPE C, T1 FR, OL
STA 68+70, 27' LT
RIM 597.82
INV 594.69 12" SE

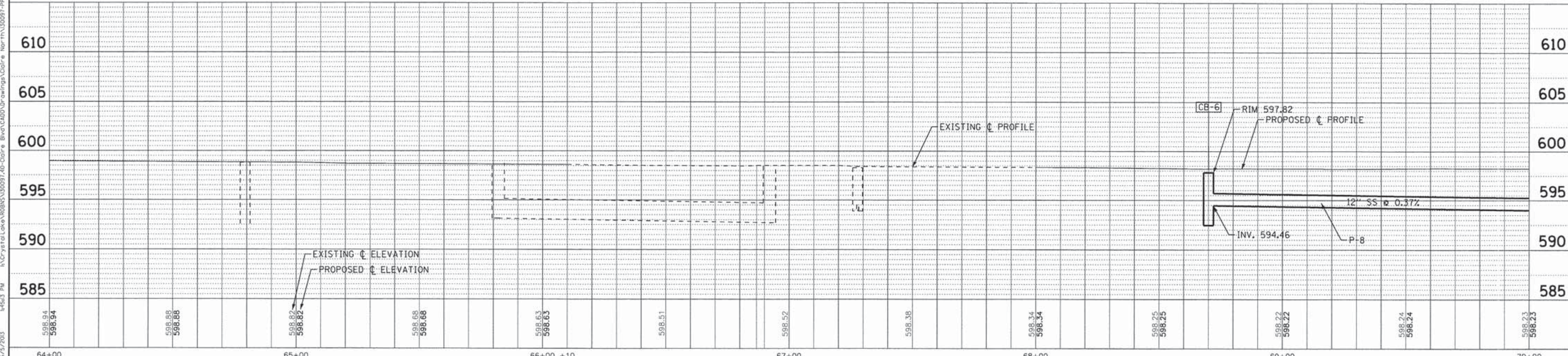
CB-6
CATCH BASIN, TYPE C, T1 FR, OL
STA 68+70, 20' RT
RIM 597.82
INV 594.46 12" SE
INV 594.46 12" NE

STORM SEWER PIPES

P-7
47 LF 12" CLASS A, TYPE I
@ 0.50%
TBF = 13.1 CY

P-8
155 LF 12" CLASS A, TYPE I
@ 0.37%
TBF = 49.6 CY

CLAIRE BOULEVARD



DESIGNED - TMS	REVISED -
DRAWN - KAR	REVISED -
CHECKED - TMS	REVISED -
DATE - 03-04-13	FILE - 130097-PP4.shx

STATE OF ILLINOIS
DEPARTMENT OF TRANSPORTATION

**PLAN AND PROFILE
CLAIRE BOULEVARD**

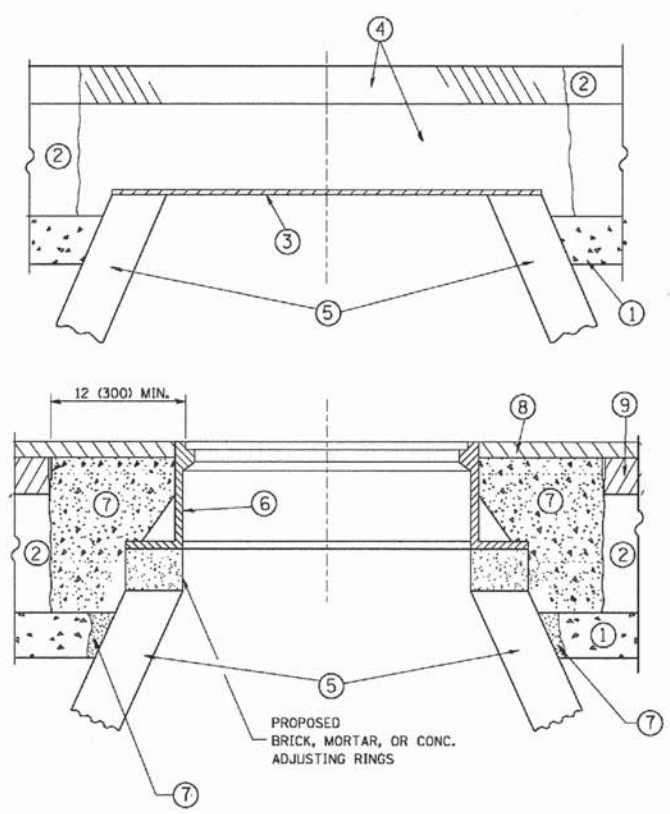
SCALE: H: 1"=20' V: 1"=5'

STA. 64+00 TO STA. 70+00

F.A.U. RTE.	SECTION	COUNTY	TOTAL SHEET NO.	SHEET NO.
1008	13-00027-00-RS	COOK	19	10
CONTRACT NO. 63845				
FED. ROAD DIST. NO. 2 ILLINOIS FED AID PROJECT M-4003(175)				

COPYRIGHT © 2013 BY BAXTER & WOODMAN, INC.
 LICENSE NO. 184-00021 - EXPIRES 4/30/2015
 56060r
 Notes for 130097-PP4: 03-04-13
 I:\CrystalLake\ROB\130097-AD-Claire Blvd\CADD\Drawings\Coofe_Northern\130097-PP4.dwg

DESIGNED BY: BATES & WOODMAN, INC.
 STATE OF ILLINOIS PROFESSIONAL ENGINEERING BOARD
 LICENSE NO. 184-00121 - EXPIRES 4/30/2013
 6/5/2003
 c:\pwork\pwork\beuerd\1\0108315\bd08.dgn
 \\victoria\user\beuerd\default.dwg
 --V:\00091\North\pen.tbl
 I:\CrystalLake\ROBINS\00091\40-Claire Blvd\CADD\Drawings\Claire North\SUBSTRUCT Dwg DETAILS - BD-11FF.dgn



NOTES:

EXISTING BROKEN FRAMES AND LIDS SHALL BE REMOVED AND DISPOSED OF BY THE CONTRACTOR AND SHALL BE REPLACED AS DIRECTED BY THE ENGINEER. REPLACEMENT FRAMES AND LIDS WILL BE PAID FOR IN ACCORDANCE WITH ARTICLE 109.04 OF THE STANDARD SPECIFICATIONS UNLESS A SEPARATE PAY ITEM HAS BEEN PROVIDED.

IF THE EXISTING LIDS ARE OPEN, THE FRAME WILL BE ADJUSTED TO THE ELEVATION OF THE MILLED PAVEMENT SURFACE PRIOR TO THE MILLING OPERATION. THE FRAME WILL NOT BE REMOVED AND COVERED BY THE METAL PLATE.

CITY OF CHICAGO CASTINGS ARE THE PROPERTY OF THE CITY AND THE CONTRACTOR SHALL NOTIFY THE CITY FOR REMOVAL AND DISPOSITION OF THE CASTINGS.

THE METAL PLATE USED TO COVER THE STRUCTURE SHALL REMAIN THE PROPERTY OF THE CONTRACTOR.

WHEN STRUCTURES ARE TO BE ADJUSTED OR RECONSTRUCTED, THE LOWERING AND RAISING OF THE FRAMES AND LIDS WILL NOT BE PAID FOR SEPARATELY BUT WILL BE INCLUDED IN THE COST OF THE CORRESPONDING PAY ITEM.

CONSTRUCTION PROCEDURES

STAGE 1 (BEFORE PAVEMENT MILLING)

A) REMOVE A MINIMUM OF 12 (300) OF THE PAVEMENT FROM AROUND THE STRUCTURE.

B) REMOVE THE EXISTING FRAME AND LID FROM THE STRUCTURE.

C) COVER THE STRUCTURE OPENING WITH A 36 (900) DIAMETER METAL PLATE.

D) BACKFILL WITH CRUSHED STONE AND A MINIMUM 1/2 (40) THICK HMA SURFACE MIX APPROVED BY THE ENGINEER.

STAGE 2 (AFTER PAVEMENT MILLING)

A) REMOVE THE HMA SURFACE MIX AND CRUSHED STONE.

B) INSTALL THE FRAME AND LID; ADJUST THE FRAME TO ITS FINAL SURFACE ELEVATION.

C) THE SURROUNDING SPACE SHALL BE FILLED WITH CLASS PP-1* CONCRETE TO THE ELEVATION OF THE SURFACE OF THE EXISTING BASE COURSE OR THE BINDER COURSE.

* UNLESS OTHERWISE SPECIFIED IN THE PLANS.

THE PROCEDURE EXPLAINED ABOVE SHALL CONFORM TO THE APPLICABLE PORTIONS OF SECTIONS 353, 406, 602, AND 603 OF THE STANDARD SPECIFICATIONS EXCEPT THAT "THE CONTRACTOR SHALL ADJUST THE STRUCTURES TO THE FINISHED PAVEMENT ELEVATION NO MORE THAN 5 CALENDAR DAYS PRIOR TO PLACEMENT OF THE FINAL LIFT OF SURFACE UNLESS APPROVED BY THE ENGINEER."

LEGEND

- ① SUB-BASE GRANULAR MATERIAL
- ⑥ FRAME AND LID (SEE NOTES)
- ② EXISTING PAVEMENT
- ⑦ CLASS PP-1* CONCRETE
- ③ 36 (900) DIAMETER METAL PLATE
- ⑧ PROPOSED HMA SURFACE COURSE
- ④ PROPOSED CRUSHED STONE AND HMA SURFACE MIX
- ⑨ PROPOSED HMA BINDER COURSE
- ⑤ EXISTING STRUCTURE

LOCATION OF STRUCTURES:

THE CONTRACTOR WILL BE REQUIRED TO KEEP A RECORD OF THE LOCATIONS OF THE BURIED STRUCTURES ACCORDING TO THE STATION AND DISTANCE LEFT OR RIGHT OF THE CENTERLINE OF PAVEMENT. UPON COMPLETION OF THE WORK, THE CONTRACTOR WILL DELIVER THE RECORD TO THE ENGINEER.

BASIS OF PAYMENT:

REMOVING FRAMES AND LIDS ON DRAINAGE AND UTILITY STRUCTURES IN THE PAVEMENT PRIOR TO MILLING, AND ADJUSTING TO FINAL GRADE PRIOR TO PLACING THE SURFACE COURSE, WILL BE PAID FOR AT THE CONTRACT UNIT PRICE EACH FOR "FRAMES AND LIDS TO BE ADJUSTED (SPECIAL)."

THIS WORK WILL NOT BE PAID FOR WHEN DRAINAGE AND UTILITY STRUCTURES ARE SPECIFIED FOR PAYMENT AS STRUCTURE RECONSTRUCTION.

NEW FRAMES AND LIDS, WHEN SPECIFIED, WILL BE PAID FOR SEPARATELY.

DETAILS FOR FRAMES AND LIDS ADJUSTMENT WITH MILLING

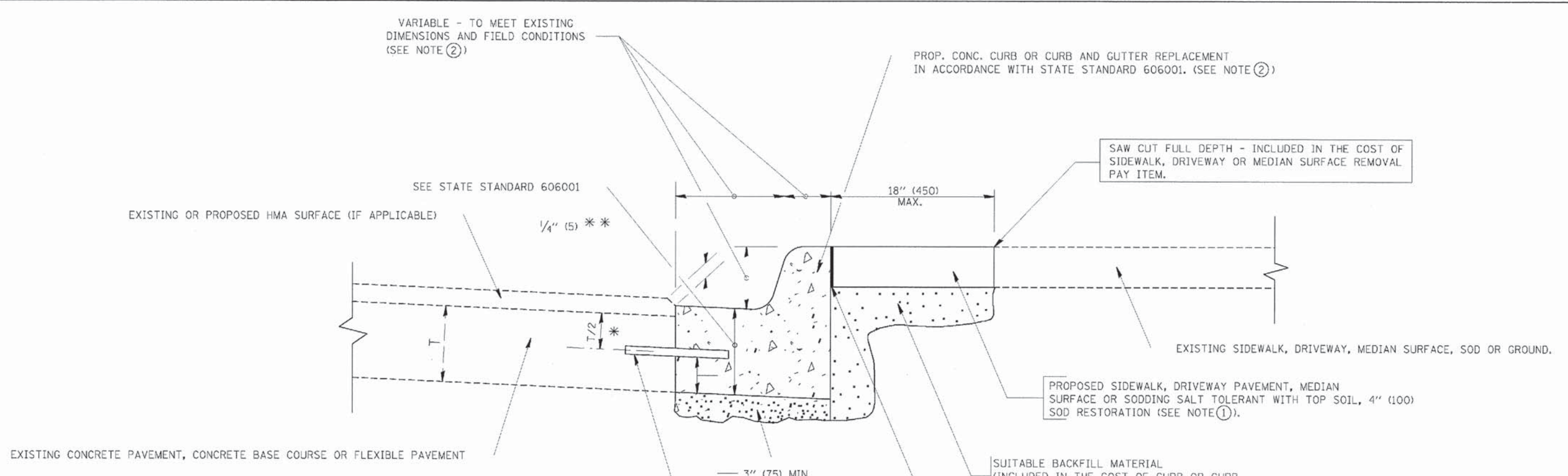
ALL DIMENSIONS ARE IN INCHES (MILLIMETERS) UNLESS OTHERWISE SHOWN

FILE NAME =	USER NAME = beuerd1	DESIGNED - R. SHAH	REVISED - R. WIEDEMAN 05-14-04
c:\pwork\pwork\beuerd\1\0108315\bd08.dgn		DRAWN -	REVISED - R. BORO 01-01-07
		CHECKED -	REVISED - R. BORO 03-09-11
		DATE - 10-25-94	REVISED - R. BORO 12-06-11

**STATE OF ILLINOIS
DEPARTMENT OF TRANSPORTATION**

DETAILS FOR FRAMES AND LIDS ADJUSTMENT WITH MILLING			
SCALE: NONE	SHEET NO. 1 OF 1 SHEETS	STA.	TO STA.

F.A.J. RTE.	SECTION	COUNTY	TOTAL SHEETS	SHEET NO.
1008	13-00027-00-RS	COOK	19	12
BD600-03 (BD-8)			CONTRACT NO. 63845	
FED. ROAD DIST. NO. 1 ILLINOIS FED. AID PROJECT M-4003(175)				



* 3" (75) MINIMUM FROM TOP AND BOTTOM OF THE CONCRETE PAVEMENT OR BASE COURSE.

** IF THE FINAL SURFACE OF THE PAVEMENT IS CONCRETE, THE GUTTER IS TO BE FLUSH WITH THE PAVEMENT.

- NOTE: ① SIDEWALK, DRIVEWAY PAVEMENT OR MEDIAN SURFACE SHALL BE SIMILAR TO THE MATERIAL BEING REMOVED AND WILL BE PAID FOR SEPARATELY.
- SODDING, SALT TOLERANT AND TOP SOIL, FURNISH AND PLACE 4" WILL BE PAID FOR SEPARATELY.
- ② FERTILIZER FOR THE PLACEMENT OF THE SOD IS NOT REQUIRED
- ③ CURB OR CURB AND GUTTER REPLACEMENT SHALL MATCH THE SHAPE OF THE EXISTING CURB OR CURB AND GUTTER UNLESS OTHERWISE SPECIFIED.
- ④ FOR CURB OR CURB AND GUTTER REMOVAL AND REPLACEMENT ADJACENT TO FLEXIBLE PAVEMENT DELETE EPOXY COATED TIE BARS.
- ⑤ LONGITUDINAL BARS, IF ENCOUNTERED IN THE EXISTING CURB OR CURB AND GUTTER, ARE NOT TO BE REPLACED. CUTTING AND REMOVING LONGITUDINAL BARS SHALL BE INCLUDED IN THE COST OF CURB OR CURB AND GUTTER REMOVAL AND REPLACEMENT.
- ⑥ THE COST OF HMA SURFACE REMOVAL IN THE EXISTING GUTTER FLAG SHALL BE INCLUDED IN THE COST OF THE CURB AND GUTTER REMOVAL AND REPLACEMENT.
- ⑦ THE REMOVAL AND REPLACEMENT OF THE EXISTING CURB OR CURB AND GUTTER SHALL BE DONE IN ACCORDANCE WITH THE APPLICABLE PORTIONS OF SECTION 440 AND 606 OF THE STANDARD SPECIFICATIONS.
- ⑧ THE LOCATIONS OF REMOVAL AND REPLACEMENT OF EXISTING CURB OR CURB AND GUTTER SHALL BE DETERMINED BY THE RESIDENT ENGINEER AT THE TIME OF CONSTRUCTION.

UNSUITABLE SUB-BASE MATERIAL TO BE REMOVED, IF DIRECTED BY THE ENGINEER, SHALL BE REPLACED WITH EITHER SUB-BASE GRANULAR MATERIAL, TYPE B OR ADDITIONAL THICKNESS OF CONCRETE.

REMOVAL AND REPLACEMENT 4" (100) OR LESS IS INCLUDED IN THE COST OF CURB OR CURB AND GUTTER REMOVAL AND REPLACEMENT.

REMOVAL AND REPLACEMENT IN EXCESS OF 4" (100) WILL BE PAID FOR IN ACCORDANCE WITH ARTICLE 109.04 OF THE STANDARD SPECIFICATIONS.

PROPOSED #6 (20) EPOXY COATED TIE BARS 24" (600) LONG AT 24" (600) CENTERS WILL NOT BE PAID FOR SEPARATELY. DELETE EPOXY COATED TIE BARS IF EXISTING TIE BARS ARE USUABLE AS DETERMINED BY THE ENGINEER. (SEE NOTE ③).

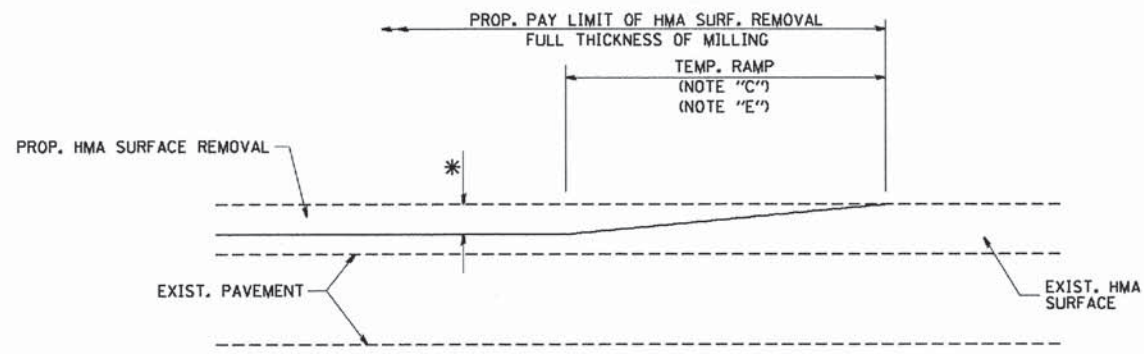
BASIS OF PAYMENT:
THIS WORK WILL BE PAID FOR AT THE CONTRACT UNIT PRICE PER FOOT (METER) FOR "CURB REMOVAL AND REPLACEMENT" OR "COMBINATION CONCRETE CURB AND GUTTER REMOVAL AND REPLACEMENT".

CURB OR CURB AND GUTTER REMOVAL AND REPLACEMENT

ALL DIMENSIONS ARE IN INCHES (MILLIMETERS) UNLESS OTHERWISE SHOWN.

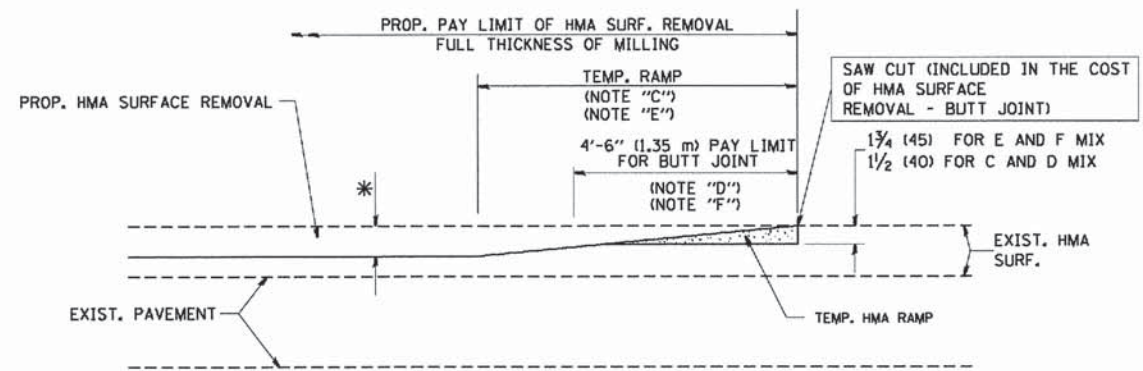
COPYRIGHT © 2011 BY BAXTER & WOODMAN, INC.
 STATE OF ILLINOIS - PROFESSIONAL DESIGN FIRM
 LICENSE NO. - BR-00021 - EXPIRES 4/30/2013
 8/2/2013 10:52:47 AM

FILE NAME =	USER NAME = drsvakosgn	DESIGNED - A. HOUSEH	REVISED - R. SHAH 10-03-96	STATE OF ILLINOIS DEPARTMENT OF TRANSPORTATION	CURB OR CURB AND GUTTER REMOVAL AND REPLACEMENT	F.A.U. RTE.	SECTION	COUNTY	TOTAL SHEETS	SHEET NO.
SCALE = 50.000' / 1" = 12' / 10' / 20' / 40'	CHECKED -	REVISED - M. GOMEZ 01-22-01	REVISED - A. ABBAS 03-21-97			1008	13-00027-00-RS	COOK	19	13
DATE 03-11-94	REVISED - R. BORO 12-15-09					BD600-06 (BD-24)		CONTRACT NO. 63845		
						SCALE: NONE		SHEET NO. 1 OF 1 SHEETS STA. TO STA.		FED. ROAD DIST. NO. 1 ILLINOIS FED. AID PROJECT M-4003(175)



MILLED TEMPORARY RAMP
(FOR BUTT JOINT AND HMA TAPER SEE DETAIL BELOW)

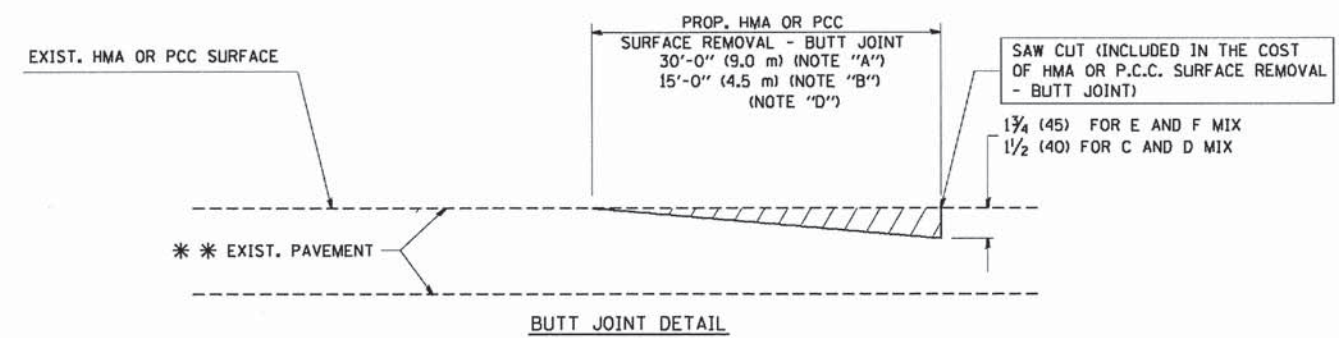
OPTION 1



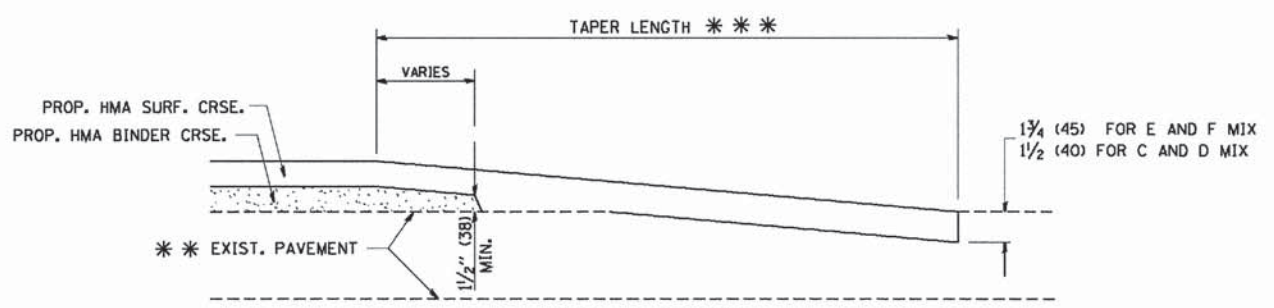
HMA CONSTRUCTED TEMPORARY RAMP
(FOR BUTT JOINT AND HMA TAPER SEE DETAIL BELOW)

OPTION 2

TYPICAL TEMPORARY RAMP



BUTT JOINT DETAIL



HMA TAPER DETAIL

TYPICAL BUTT JOINT AND HMA TAPER
FOR RESURFACING ONLY

*** PC CONCRETE, HMA OR HMA RESURFACED PAVEMENT.

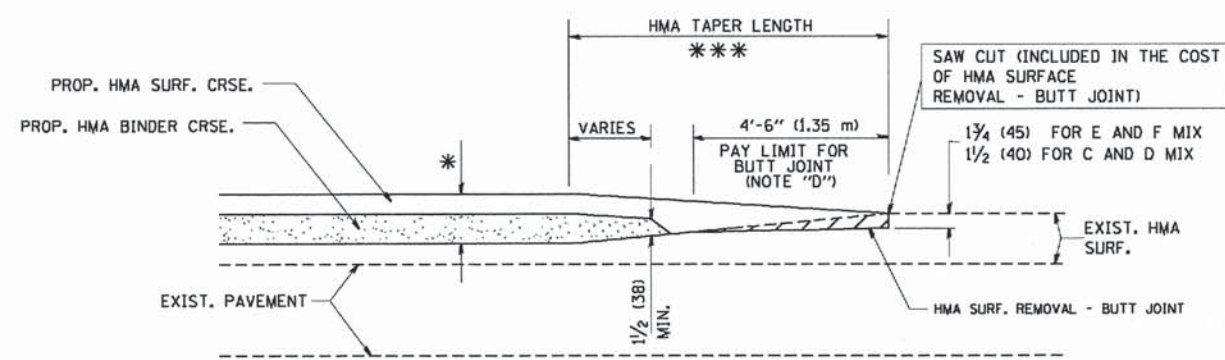
NOTES

- A: MAINLINE ROADWAYS AND MAJOR SIDE ROADS.
 - B: MINOR SIDE ROADS.
 - C: THE TEMP. RAMP SHALL BE CONSTRUCTED IMMEDIATELY UPON REMOVAL OF THE EXISTING HMA SURFACE.
 - D: THE BUTT JOINT SHALL BE CONSTRUCTED IMMEDIATELY PRIOR TO PLACING THE PROPOSED HMA COURSES.
 - E: TAPER THE TEMP. RAMP AT A RATE OF 3'-0" (900 mm) PER 1 INCH (25 mm) OF MILLING THICKNESS.
 - F: INSTALLATION AND REMOVAL OF THE 4'-6" (1.35 m) TEMP. RAMP IS INCLUDED IN COST OF HMA SURFACE REMOVAL - BUTT JOINT
 - G: SEE ARTICLE 406.08 AND 406.14 OF THE STANDARD SPECIFICATIONS FOR "HMA AND/OR PCC SURFACE REMOVAL, BUTT JOINT".
- * SEE TYPICAL SECTIONS FOR MILLING THICKNESS.
- *** 20'-0" (6.1 m) PER 1 (25) RESURFACING (NOTE "A")
10'-0" (3.0 m) PER 1 (25) RESURFACING (NOTE "B")

BASIS OF PAYMENT:

THE BUTT JOINT WILL BE PAID FOR AT THE CONTRACT UNIT PRICE PER SQUARE YARD (SQUARE METER) FOR "HOT-MIX ASPHALT SURFACE REMOVAL - BUTT JOINT" OR FOR "PORTLAND CEMENT CONCRETE SURFACE REMOVAL - BUTT JOINT".

ALL DIMENSIONS ARE IN INCHES (MILLIMETERS) UNLESS OTHERWISE SHOWN.



BUTT JOINT AND
HMA TAPER

TYPICAL BUTT JOINT AND HMA TAPER
FOR MILLING AND RESURFACING

COPYRIGHT © 2011 BY BATES & WOODMAN, INC.
 LICENSE NO. 184-0003 - EXPIRES 4/30/2013
 6/5/2003 10:52:38 PM
 I:\Crystal\Low\BIBNS\10097-40-Cofre-BivencADP\Drawings\Cofre North\SUBSTRUCT ONE DETAILS - BD-HTR.dgn

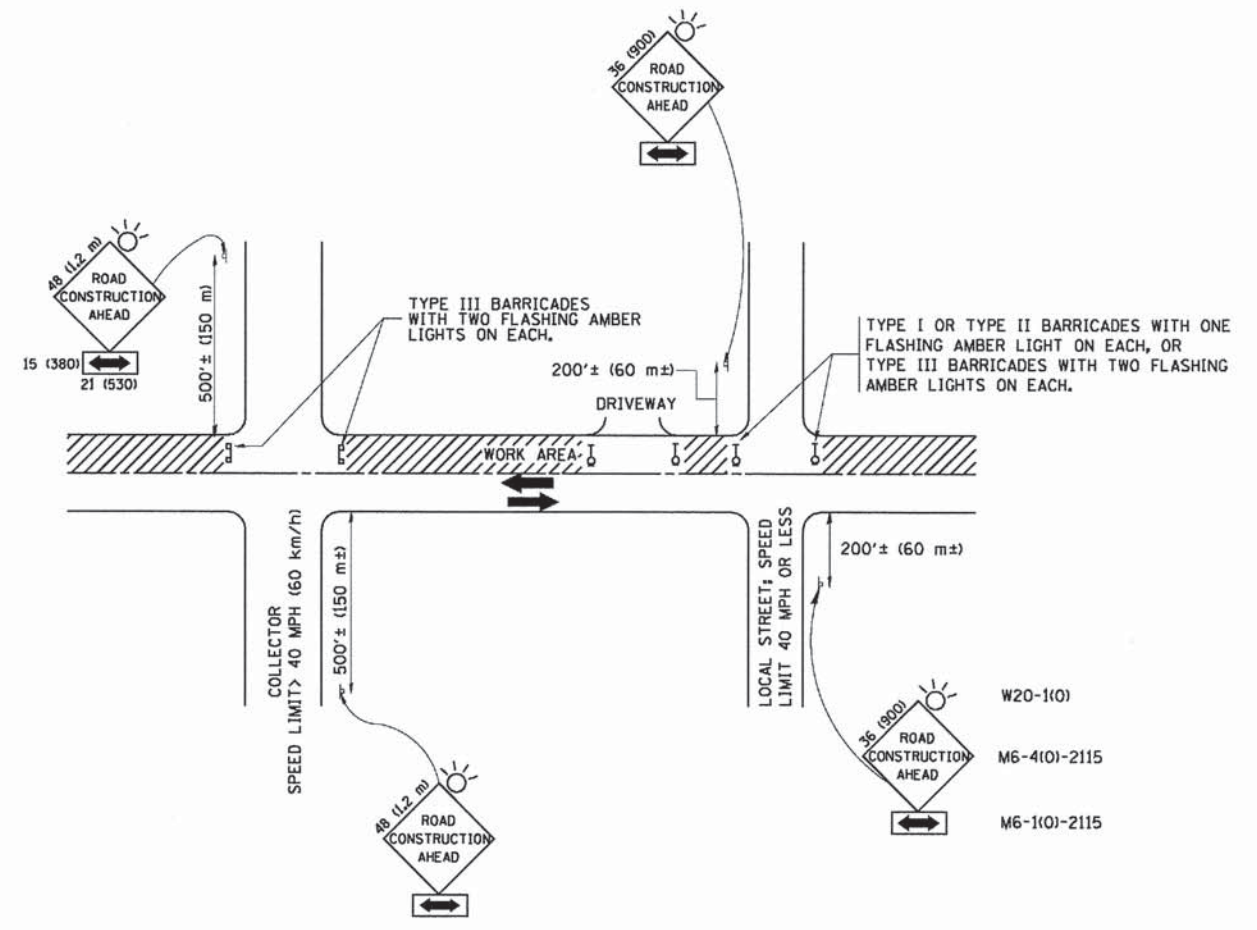
FILE NAME = W:\data\d\22x34\bd32.dgn	USER NAME = geglisenbt	DESIGNED - M. DE YONG	REVISED - R. SHAH 10-25-94
		DRAWN -	REVISED - A. ABBAS 03-21-97
PLOT SCALE = 58.0000' / IN.		CHECKED -	REVISED - M. GOMEZ 04-06-01
PLOT DATE = 1/4/2008		DATE - 06-13-90	REVISED - R. BORO 01-01-07

STATE OF ILLINOIS
DEPARTMENT OF TRANSPORTATION

BUTT JOINT AND HMA TAPER DETAILS			
SCALE: NONE	SHEET NO. 1 OF 1 SHEETS	STA.	TO STA.

F.A.J. RTE.	SECTION	COUNTY	TOTAL SHEETS	SHEET NO.
1008	13-00027-00-RS	COOK	19	14
BD400-05 BD32			CONTRACT NO. 63845	
FED. ROAD DIST. NO. 1 ILLINOIS FED. AID PROJECT M-4003175				

DRAWING © 2011 BY BAXTER & WADSWORTH, INC.
 STATE OF ILLINOIS PROFESSIONAL DESIGN FIRM
 LICENSE NO. 184-00121 - EXPIRES 4/30/2011
 570 Crystal Lake, Illinois 60014-1001
 815/555-7203 184555 PIN



TRAFFIC CONTROL AND PROTECTION FOR SIDE ROADS, INTERSECTIONS, AND DRIVEWAYS

NOTES:

- A. FOR NO LANE RESTRICTION ON THE SIDE ROAD OR DRIVEWAYS
 - 1. SIDE ROAD WITH A SPEED LIMIT OF 40 MPH (60 km/h) OR LESS AS SHOWN ON THE DRAWING AND AS DIRECTED BY THE ENGINEER:
 - a) ONE ROAD CONSTRUCTION AHEAD SIGN 36 x 36 (900x900) WITH A FLASHER AND FLAG MOUNTED ON IT APPROXIMATELY 200' (60 m) IN ADVANCE OF THE MAIN ROUTE.
 - b) THE CLOSED PORTION OF THE MAIN ROUTE SHALL BE PROTECTED BY BLOCKING WITH TYPE I, TYPE II OR TYPE III BARRICADES, 1/3 OF THE CROSS SECTION OF THE CLOSED PORTION.
 - 2. SIDE ROAD WITH A SPEED LIMIT GREATER THAN 40 MPH (60 km/h) AS SHOWN ON THE DRAWING AND AS DIRECTED BY THE ENGINEER:
 - a) ONE ROAD CONSTRUCTION AHEAD SIGN 48 x 48 (1,2 m x 1,2 m) WITH A FLASHER MOUNTED ON IT APPROXIMATELY 500' (150 m) IN ADVANCE OF THE MAIN ROUTE.
 - b) THE CLOSED PORTION OF THE MAIN ROUTE SHALL BE PROTECTED BY BLOCKING WITH TYPE III BARRICADES, 1/2 OF THE CROSS SECTION OF THE CLOSED PORTION.
- 3. WHEN THE SIDE ROAD LIES BETWEEN THE BEGINNING OF THE MAINLINE SIGNING AND THE WORK ZONE, A SINGLE HEADED ARROW (M6-1) SHALL BE USED IN LIEU OF THE DOUBLE HEADED ARROW (M6-4).

- B. FOR A LANE CLOSURE ON A SIDE ROAD OR DRIVEWAY:

USE APPLICABLE PORTIONS OF THE TYPICAL APPLICATION OF TRAFFIC CONTROL DEVICES (STD. 701501, STD. 701606 OR THE APPROPRIATE STANDARD). THE SPACING OF SIGNS AND BARRICADES SHALL BE ADJUSTED FOR FIELD CONDITIONS AS DIRECTED BY THE ENGINEER. THE DIRECTIONAL ARROW SHALL BE COVERED OR REMOVED WHEN NO LONGER CONSISTENT WITH THE SIDE ROAD LANE CLOSURE.
- C. ADVANCE WARNING SIGNS ARE TO BE OMITTED ON DRIVEWAY UNLESS OTHERWISE NOTED.
- D. THE TRAFFIC CONTROL AND PROTECTION FOR SIDE ROADS, INTERSECTIONS, AND DRIVEWAYS SHALL BE INCIDENTAL TO THE COST OF SPECIFIED TRAFFIC CONTROL STANDARDS OR ITEMS.

All dimensions are in millimeters (inches) unless otherwise shown.

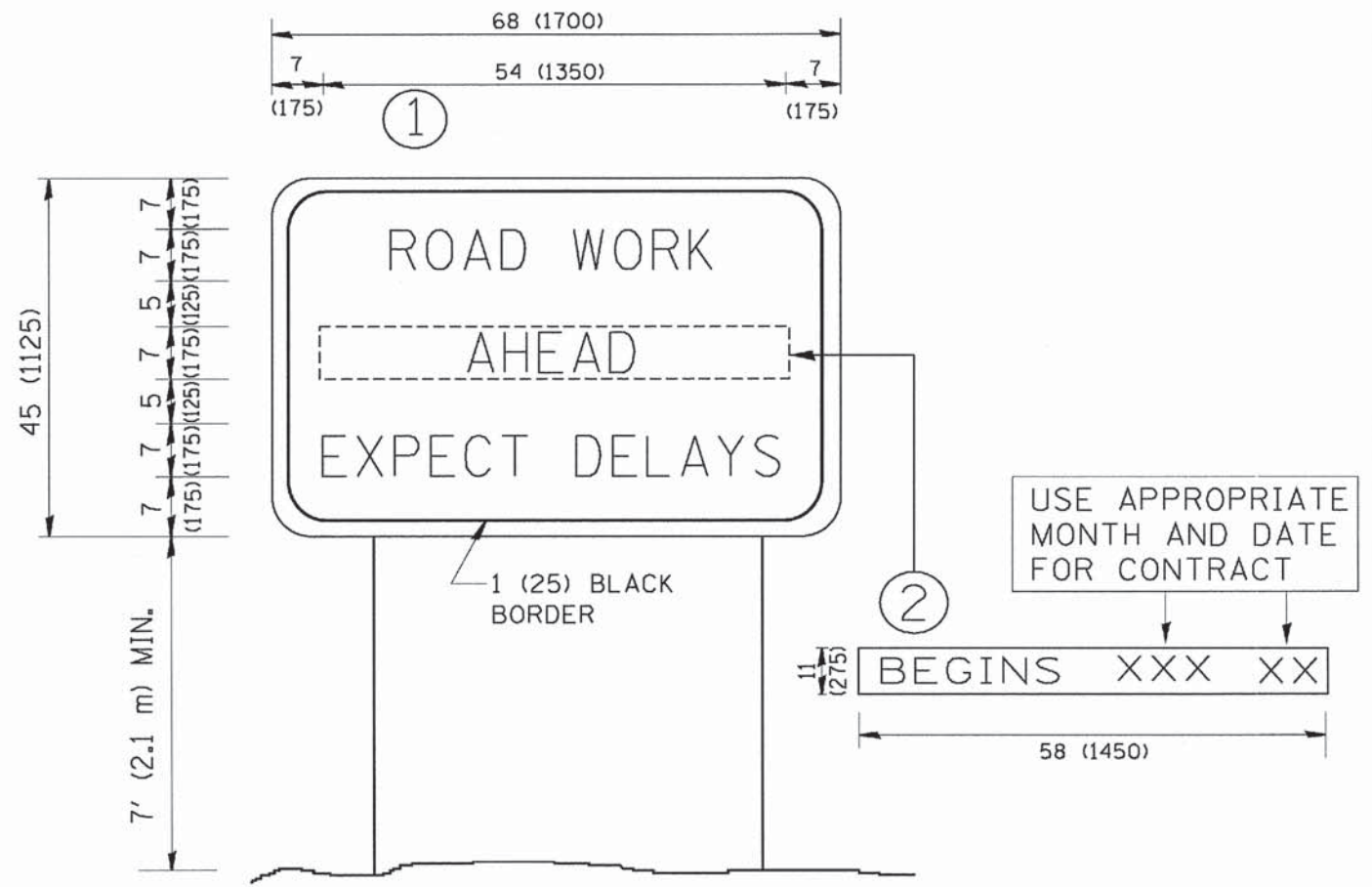
FILE NAME = M:\data\22x34\1018.dgn	USER NAME = sgelienobt	DESIGNED - LHA	REVISED - J. OBERLE 10-18-95
	PLOT SCALE = 58.822 ' / IN.	DRAWN -	REVISED - A. HOUSEH 03-06-96
	PLOT DATE = 1/4/2008	CHECKED -	REVISED - A. HOUSEH 10-15-96
		DATE - 06-89	REVISED - T. RAMMACHER 01-06-00

**STATE OF ILLINOIS
DEPARTMENT OF TRANSPORTATION**

TRAFFIC CONTROL AND PROTECTION FOR SIDE ROADS, INTERSECTIONS, AND DRIVEWAYS			
SCALE: NONE	SHEET NO. 1 OF 1 SHEETS	STA.	TO STA.

F.A.I. RTE. 1008	SECTION 13-00027-00-RS	COUNTY COOK	TOTAL SHEETS 19	SHEET NO. 15
TC-10			CONTRACT NO. 63845	
FED. ROAD DIST. NO. 1 ILLINOIS FED. AID PROJECT M-4003(175)				

DRAWN BY: MATTHEW A. WOODMAN, INC.
 STATE OF ILLINOIS
 LICENSE NO. 184-00021 - EXPIRES 4/30/2003
 6/5/2003 10:46:03 PM
 W:\data\22x34\1c22.dgn
 ...\\server\cscf-bw\default.dft
 ...\\server\cscf-bw\11pen\11
 ...\\server\cscf-bw\11pen\11
 ...\\server\cscf-bw\11pen\11



NOTES:

1. USE BLACK LETTERING ON ORANGE BACKGROUND.
2. ERECT SIGNS IN ADVANCE OF THE LOCATION FOR THE "ROAD CONSTRUCTION AHEAD" SIGN AT LOCATIONS AS DIRECTED BY THE ENGINEER.
3. ERECT SIGN ① WITH INSTALLED PANEL ② ONE WEEK PRIOR TO THE START OF CONSTRUCTION.
4. REMOVE PANEL ② SOON AFTER THE START OF CONSTRUCTION.
5. SEE SPECIAL PROVISION FOR "TEMPORARY INFORMATION SIGNING" FOR ADDITIONAL INFORMATION.
6. ONE SIGN ASSEMBLY EQUALS 25.70 SQ. FT. (2.3 SQ. M.)
7. SHALL BE PAID FOR AS TEMPORARY INFORMATION SIGNING.

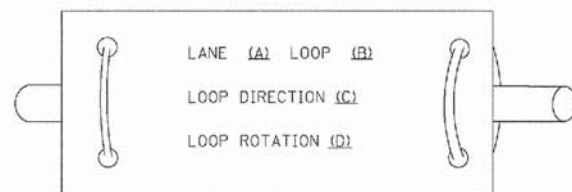
ALL DIMENSIONS ARE IN INCHES (MILLIMETERS) UNLESS OTHERWISE SHOWN.

FILE NAME = W:\data\22x34\1c22.dgn	USER NAME = geglionobt	DESIGNED -	REVISED - R. MIRS 09-15-97	STATE OF ILLINOIS DEPARTMENT OF TRANSPORTATION	ARTERIAL ROAD INFORMATION SIGN			F.A.J. RTE.	SECTION	COUNTY	TOTAL SHEETS	SHEET NO.
	PLOT SCALE = 60:000 1/4 IN.	DRAWN -	REVISED - R. MIRS 12-11-97		1008	13-00027-00-RS	COOK	19	17			
	PLOT DATE = 1/4/2008	CHECKED -	REVISED - T. RAMMACHER 02-02-99		TC-22			CONTRACT NO. 63845				
		DATE -	REVISED - C. JUCIUS 01-31-07		SCALE: NONE	SHEET NO. 1 OF 1 SHEETS	STA. TO STA.	FED. ROAD DIST. NO. 1 (ILLINOIS) FED. AID PROJECT M-4003(175)				

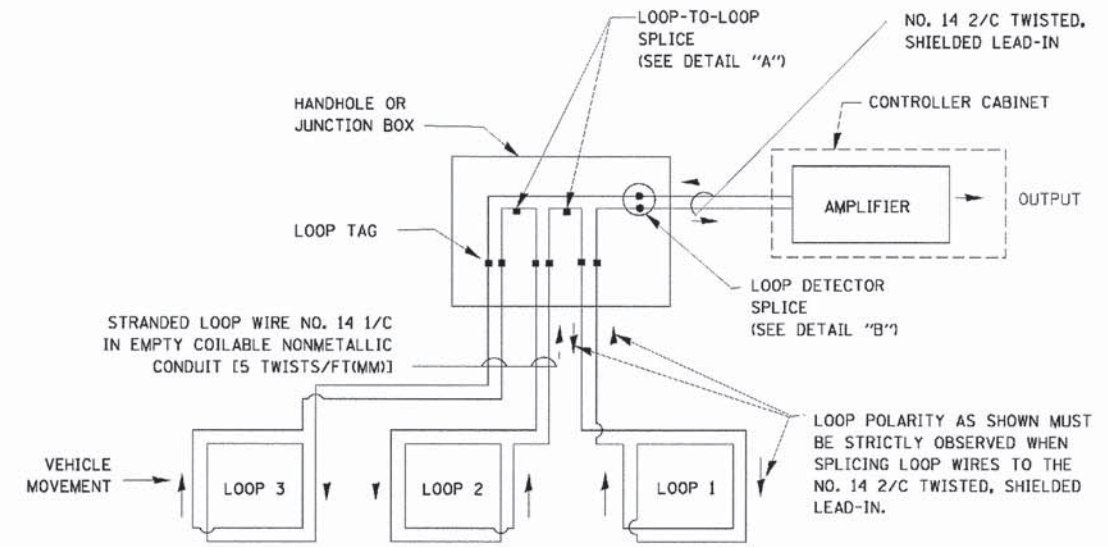
LOOP DETECTOR NOTES

- EACH PAIR OF LOOP WIRES SHALL BE PLACED IN A SEPARATE EMPTY COILABLE NONMETALLIC CONDUIT FROM THE EDGE OF PAVEMENT TO THE HANDHOLE. SPACING BETWEEN THE HOLES DRILLED IN THE PAVEMENT SHALL NOT BE LESS THAN 6" (150 mm). EMPTY COILABLE NONMETALLIC CONDUIT SHALL BE INCLUDED IN THE COST OF THE LOOP WIRE.
- THE NUMBER OF LOOP TURNS SHALL BE AS RECOMMENDED BY THE AMPLIFIER MANUFACTURER. ALL ADJACENT SIDES OF THE LOOPS SHALL BE INSTALLED IN SUCH A WAY THAT THE CURRENT FLOW IS IN THE SAME DIRECTION TO REINFORCE ITS MAGNETIC FIELDS FOR SMALL VEHICLE DETECTION.
- EACH LOOP LEAD-IN SHALL BE IDENTIFIED AND PERMANENTLY TAGGED IN THE HANDHOLE. EACH LEAD-IN CABLE TAG SHALL INDICATE THE LOCATION OF THE LOOP, LOOP ROTATION (CLOCKWISE/COUNTERCLOCKWISE), LOOP LEAD-IN DIRECTION (IN OR OUT), LOOP CABLE NUMBER AND LOCATION IN CABINET, AND NUMBER OF TURNS IN THE DETECTOR LOOPS IN WATER PROOF INK AS INDICATED ON THE DISTRICT 1 STANDARD TRAFFIC SIGNAL DESIGN DETAIL. THE CONTRACTOR SHALL MARK LOOP LOCATIONS ON RECORD DRAWINGS AND PRESENT TO THE ENGINEER AFTER FINAL INSPECTION. LOOPS SHALL BE MARKED BY LANE AND LOOP NUMBER. SEE DETAIL BELOW.
- ALL LOOP CABLE SHALL BE FASTENED WITH PLASTIC TIE WRAP TO THE HANDHOLE HOOKS.
- IN ASPHALT PAVEMENT, LOOPS SHOULD BE PLACED IN THE BINDER AND DIVESHOLES MARKED AT THE CURB WITH A SAW-CUT. THE SAW-CUT SHALL BE CUT IN ACCORDANCE WITH LOCAL AND E.P.A. DUST CONTROL REQUIREMENTS. DETECTOR LOOP(S) SHALL NOT BE INSTALLED IN WET CONDITIONS AND THE SAW-CUTS MUST BE FREE OF DEBRIS AND RESIDUE SUCH AS DUST AND WATER WHICH IS TO BE ACHIEVED BY THE USE OF COMPRESSED AIR, WIRE BRUSHING AND HEAT DRYING ACCORDING TO SEALANT MANUFACTURER REQUIREMENTS. THE DETECTOR WIRE SHALL BE HELD IN PLACE BY THE USE OF FORM WEDGES. WEDGES SHALL BE SPACED NO MORE THAN 18" (450 mm) APART.
- LOOP SPLICES SHALL BE SOLDERED USING A SOLDERING IRON. BLOW TORCHES OR OTHER DEVICES WHICH OXIDIZE COPPER CABLE SHALL NOT BE ALLOWED FOR SOLDERING OPERATIONS. SEE DETAIL BELOW RIGHT.
- PREFORMED DETECTOR LOOPS SHALL BE USED, AS SHOWN ON THE PLANS, WHERE NEW CONCRETE PAVEMENT IS PROPOSED. THE INSTALLATION OF PREFORMED LOOPS SHALL BE IN ACCORDANCE WITH THE DISTRICT 1 SPECIFICATIONS OR AS DIRECTED BY THE ENGINEER.

LOOP LEAD-IN CABLE TAG

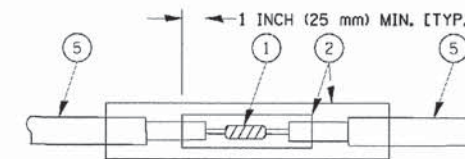


- LANE 1 IS THE LANE CLOSEST TO THE CENTERLINE OF THE ROADWAY
- LOOP #1 IS THE LOOP IN THE LANE CLOSEST TO THE INTERSECTION.
- LABEL LOOP CABLE "IN" OR LOOP CABLE "OUT".
- LABEL LOOP CABLE CLOCKWISE OR LOOP CABLE COUNTERCLOCKWISE.

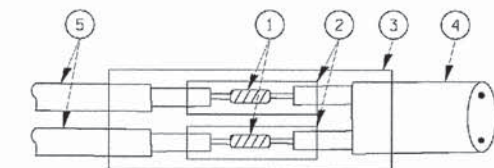


DETECTOR LOOP WIRING SCHEMATIC

- LOOPS SHALL BE SPLICED IN SERIES.
- SAW-CUTS SHALL BE A MINIMUM WIDTH OF 5/16" (8 mm).
- SAW-CUT DEPTHS SHALL BE 3" (75 mm). IF IN CONCRETE, THE SAW-CUT DEPTH SHALL BE TO THE TOP OF THE REINFORCEMENT.
- LOOP CORNERS SHALL BE DRILLED WITH A 2" (50 mm) DIAMETER CORE.

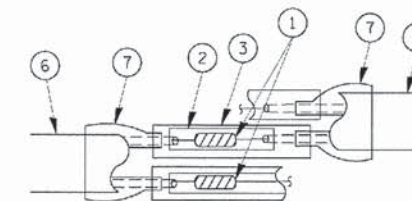


DETAIL "A"
LOOP-TO-LOOP SPLICE

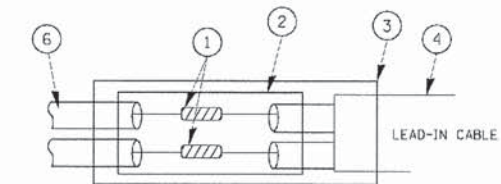


DETAIL "B"
LOOP-TO-CONTROLLER SPLICE

TYPE I LOOP



DETAIL "A"
LOOP-TO-LOOP SPLICE



DETAIL "B"
LOOP-TO-CONTROLLER SPLICE

LOOP DETECTOR SPLICE

- WESTERN UNION SPLICE SOLDERED WITH ROSIN CORE FLUX. ALL EXPOSED SURFACES OF THE SOLDER SHALL BE SMOOTH.
- WCSMW 30/100 HEAT SHRINK TUBE, MINIMUM LENGTH 3" (75 mm), UNDERWATER GRADE.
- WCS 200/750 HEAT SHRINK TUBE, MINIMUM LENGTH 6" (150 mm), UNDERWATER GRADE.
- NO. 14 2/C TWISTED, SHIELDED CABLE.
- LOOP CONDUCTOR WITH FLEXIBLE PLASTIC TUBE.
- PRE-FORMED LOOP
- XL POLYOLEFIN 2 CONDUCTOR BREAKOUT SEALS. TYCO CBR-2 OR APPROVED EQUAL

FILE NAME *	USER NAME * bowen	DESIGNED - DAD	REVISED -
DATE	10-28-09	CHECKED - DAD	REVISED -
PLOT SCALE * 90.0000 1/ IN.		DRAWN BCK	REVISED
PLOT OR P * 11/4/2009		DATE	10-28-09

STATE OF ILLINOIS
DEPARTMENT OF TRANSPORTATION

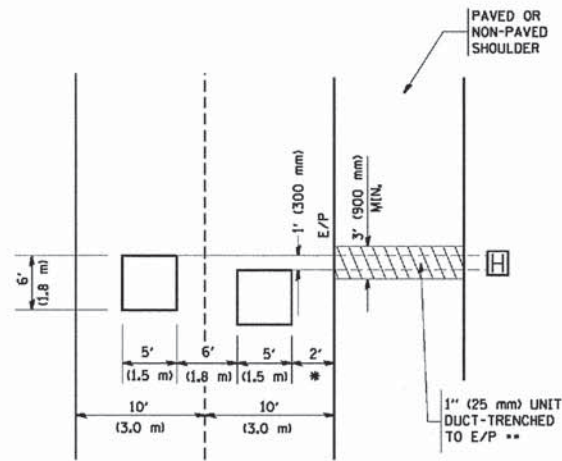
DISTRICT ONE
STANDARD TRAFFIC SIGNAL DESIGN DETAILS

SCALE: NONE SHEET NO. 1 OF 6 SHEETS STA. TO STA.

F.A. RTE.	SECTION	COUNTY	TOTAL SHEETS	SHEET NO.
1008	13-00027-00-R5	COOK	19	18
TS-05			CONTRACT NO. 63845	
FED. ROAD DIST. NO. 1 ILLINOIS FED. AID PROJECT M-4003(175)				

LOOPS NEXT TO SHOULDERS

PROVIDE A PAVEMENT REPLACEMENT
NOTE WHICH SHOULD EQUAL
3' (900 mm) X WIDTH OF
PAVED SHOULDER.

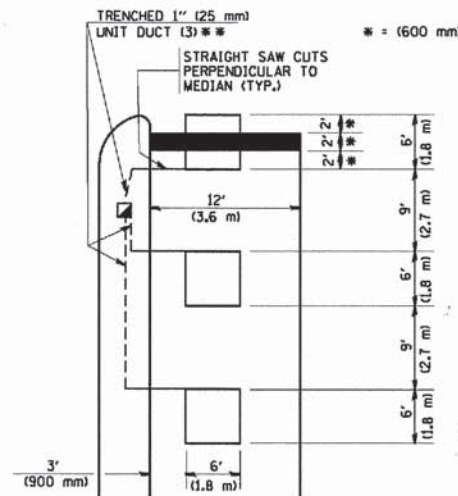


* = (600 mm)

** UNIT DUCT IS TO BE SHOWN ON PLAN SHEETS
BUT SHALL NOT BE INCLUDED IN THE PAY ITEMS.

**LEFT TURN LANES WITH MEDIANS
VOLUME DENSITY ("FAR OUT" DETECTION)
ON SAME APPROACH
(PROTECTED / PERMITTED LEFT TURN PHASING)**

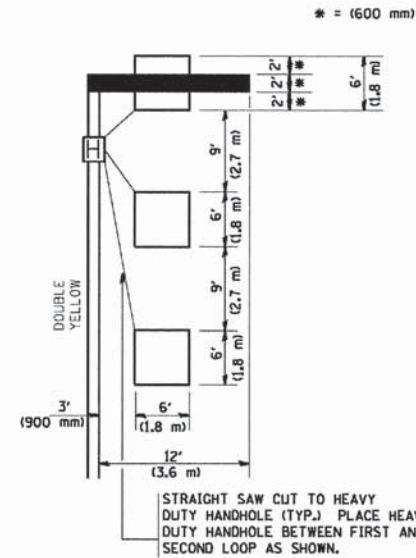
HANDHOLE LOCATION MAY
VARY DEPENDING ON GEOMETRICS
AND DESIGN OF TRAFFIC SIGNALS.
HEAVY-DUTY HANDHOLES TO BE
USED WHEN THE MEDIAN IS
MOUNTABLE. REFER TO STANDARD
814001 TO ENSURE THAT HANDHOLE
FITS IN MEDIAN.



** UNIT DUCT IS TO BE SHOWN ON PLAN SHEETS
BUT SHALL NOT BE INCLUDED IN THE PAY ITEMS.

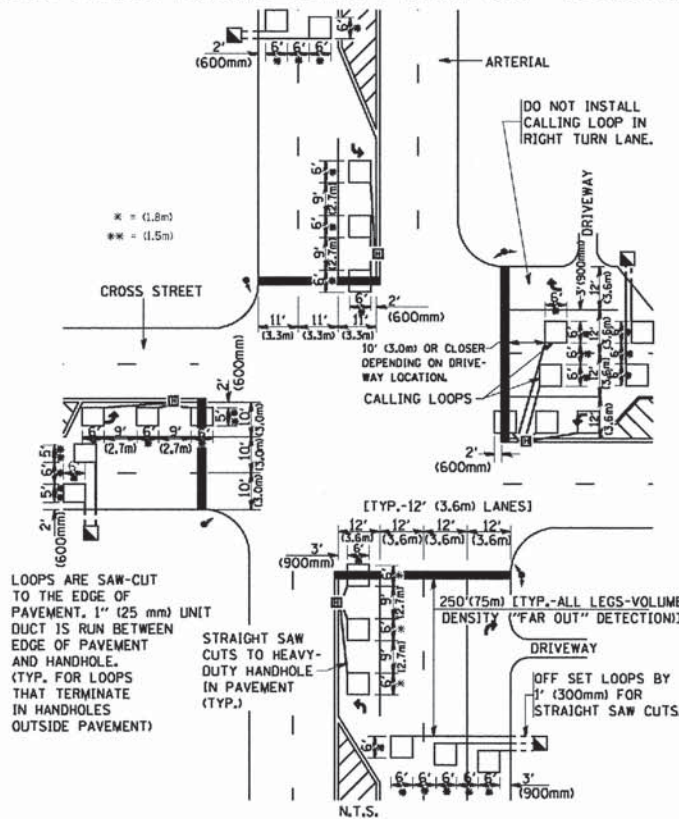
NOTE: DUAL LEFT TURNS NOT SHOWN REFER TO
PLAN SHEET FOR DETECTOR LOOP REPLACEMENT

**LEFT TURN LANES WITHOUT MEDIANS
VOLUME DENSITY ("FAR OUT" DETECTION)
ON SAME APPROACH
(PROTECTED / PERMITTED LEFT TURN PHASING)**



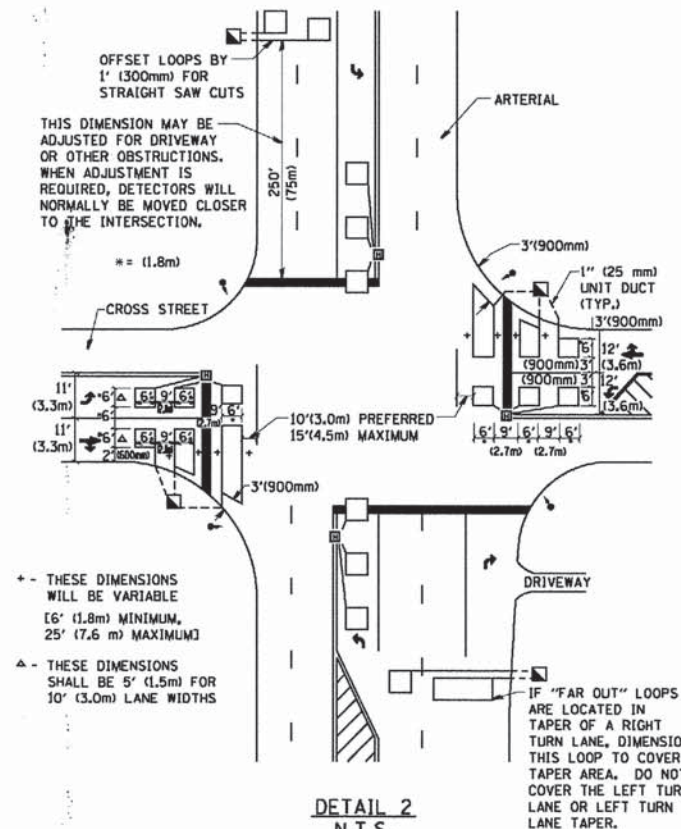
NOTE: DUAL LEFT TURNS NOT SHOWN REFER TO
PLAN SHEET FOR DETECTOR LOOP REPLACEMENT

**ARTERIAL-VOLUME DENSITY ("FAR OUT" DETECTION)
CROSS STREET-VOLUME DENSITY ("FAR OUT" DETECTION)**



**DETAIL 1
N.T.S.**

**ARTERIAL-VOLUME DENSITY ("FAR OUT" DETECTION)
CROSS STREET-NON VOLUME DENSITY ("UPTIGHT" PRESENCE DETECTION)**



**DETAIL 2
N.T.S.**

NOTES:

VEHICLES LOOP DETECTORS

- * ALL LEAD IN CABLE SHALL BE TWO CONDUCTOR NO. 14 TWISTED, SHIELDED.
- * EACH DETECTOR LOOP SHALL HAVE ITS OWN SAW CUT FROM THE LOOP TO THE EDGE OF PAVEMENT OR TO A HANDHOLE IN THE PAVEMENT.
- * EACH DETECTOR LOOP SHALL HAVE ITS OWN ONE INCH (25 mm) UNIT DUCT BETWEEN THE EDGE OF PAVEMENT AND THE FIRST HANDHOLE OR JUNCTION BOX. EACH UNIT DUCT RUN SHALL BE SHOWN ON THE PLANS BY THE DESIGNER, BUT SHALL NOT BE PAID FOR SEPARATELY. THIS ITEM IS INCIDENTAL TO THE PAY ITEM FOR DETECTOR LOOPS.
- * ONE DIMENSION OF ALL DETECTOR LOOPS SHALL BE SIX FEET (1.8 m)
- * EACH LANE OF NON-LOCKING, PRESENCE DETECTION AND EACH LANE OF A DOUBLE LEFT TURN LANE REQUIRES A SEPARATE INDUCTIVE LOOP DETECTOR AND LEAD IN CABLE.
- * WHEN NON-LOCKING, PRESENCE DETECTION IS USED, MORE THAN ONE LOOP PER LANE IS REQUIRED BEHIND THE STOP BAR (i.e. 1-1/2, 1-3/4, 2).
- * WHEN SYSTEM LOOPS ARE REQUIRED ON AN APPROACH OF AN INTERSECTION, THE LOOPS USED FOR VOLUME DENSITY AND INTERSECTION TIMING SHALL ALSO BE USED AS SYSTEM DETECTORS. EACH ONE OF THESE TYPE OF LOOPS REQUIRES A SEPARATE TWO CONDUCTOR NO. 14 TWISTED SHIELDED CABLE AND A SEPARATE INDUCTIVE LOOP DETECTOR WHEN NEW CONTROLLERS ARE UTILIZED. THE DESIGNER SHALL LABEL THESE TYPES OF LOOPS AS "INTERSECTION AND SAMPLING (SYSTEM) DETECTORS" ON THE SIGNAL LAYOUT, THE INTERCONNECT PLAN AND THE SYSTEM CABLE PLAN. WHEN AN EXISTING CONTROLLER IS UTILIZED FOR THIS TYPE OF DETECTION, THE PAY ITEM "INDUCTIVE LOOP DETECTOR WITH SYSTEM OUTPUT" SHOULD BE USED.

PLACEMENT OF DETECTORS

THE FOLLOWING FIGURES REPRESENT THE MOST COMMON DETECTOR LOOP LOCATIONS AND SIZES. ADJUSTMENTS WILL BE NECESSARY FOR SPECIFIC GEOMETRIC CONSIDERATIONS.

LOCATIONS AND DIMENSIONS OF DETECTOR LOOPS ARE REQUIRED ON ALL SIGNAL LAYOUT PLAN SHEETS.

"FAR OUT" DETECTION REFERS TO LOCKING, PRESENCE TYPE DETECTION LOCATED IN THRU LANES, RIGHT TURN LANES, AND RIGHT TURN LANE TAPER AREAS (IF APPLICABLE), USUALLY 250' (75 m) IN ADVANCE OF STOP BARS. "UPTIGHT" DETECTION REFERS TO NON-LOCKING PRESENCE TYPE DETECTION LOCATED IN ALL LANES AND 10'-15' (3.0 m-4.5 m) BEHIND THE CROSSING STREET'S EDGE OF PAVEMENT EXTENDED.

NOTE:

ALL DETAILS AND NOTES SHOWN ARE FROM THE I.D.O.T. DISTRICT 1 TRAFFIC SIGNAL DESIGN GUIDELINES DATED JANUARY 1995

THIS DRAWING HAS BEEN PREPARED TO ASSIST THE RESIDENT ENGINEER FOR ALL ROADWAY RESURFACING OR S.M.A.R.T. PROJECTS WHERE THE DIMENSIONS ARE NOT SHOWN ON THE PLANS AND THE FINAL LOCATIONS FOR CROSSWALKS OR STOP BARS ARE NOT DETERMINED.

COMPILED BY: BAUER & BROSCH, INC.
 STATE OF ILLINOIS PROFESSIONAL DESIGN FIRM
 LICENSE NO. - 84-00101 - EXPIRES 4/30/2013
 6/27/2013 10:43:37 PM
 I:\Crystal Lake\08085\00091-40-Cleara Blvd\CAD\Drawings\Signal Details - 15-1111.dgn

FILE NAME = W:\data\td\22x34\td07.dgn	USER NAME = geglionobt	DESIGNED -	REVISED -
		DRAWN -	REVISED -
		CHECKED - R.K.F.	REVISED -
		DATE - 1/4/2008	REVISED -

**STATE OF ILLINOIS
DEPARTMENT OF TRANSPORTATION**

**DISTRICT 1 - DETECTOR LOOP INSTALLATION
DETAILS FOR ROADWAY RESURFACING**

SCALE: NONE SHEET NO. 1 OF 1 SHEETS STA. TO STA.

F.A.U. RTE.	SECTION	COUNTY	TOTAL SHEETS	SHEET NO.
1008	13-00027-00-RS	COOK	19	19
TS-07		CONTRACT NO. 63845		
FED. ROAD DIST. NO. 1 ILLINOIS FED. AID PROJECT M-4003(175)				