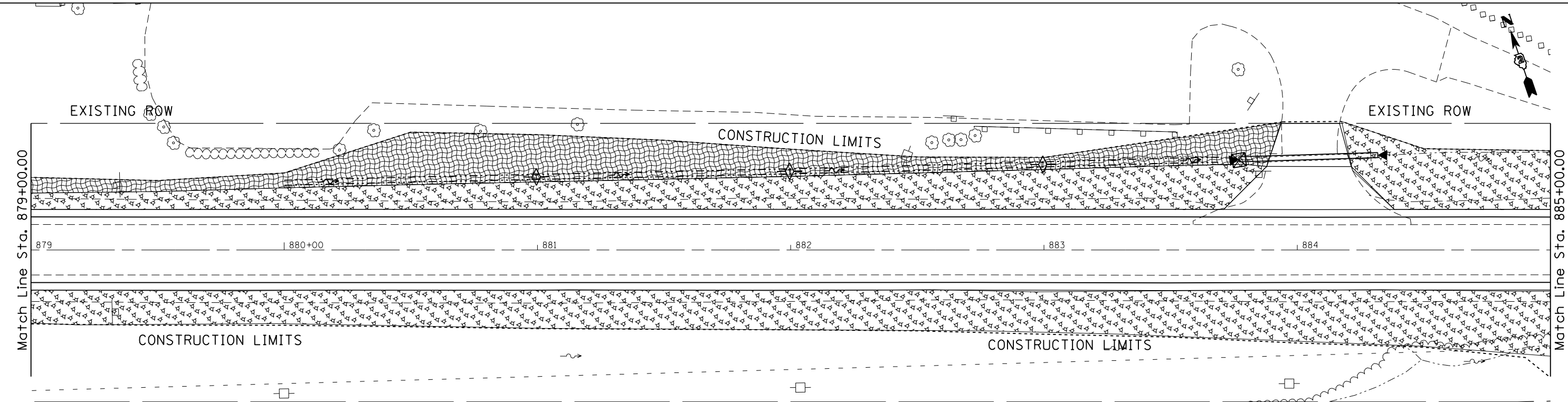
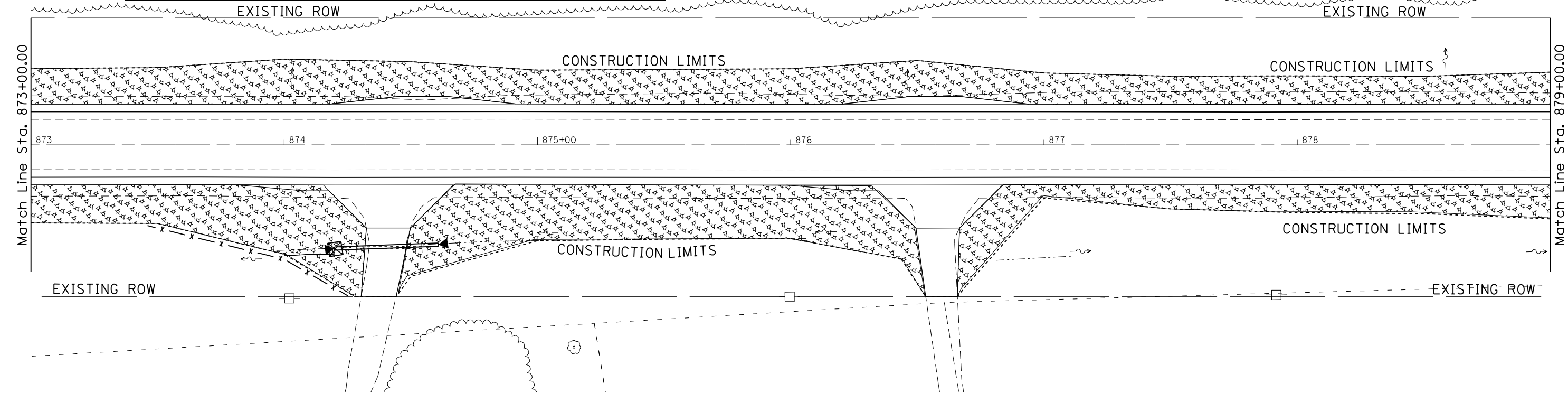


-  = MULCH METHOD 3
-  = INLET PIPE PROTECTION
-  = TEMPORARY DITCH CHECKS
-  = RIP RAP
-  = EROSION CONTROL BLANKET
-  = TURF REINFORCEMENT MAT
-  = PERIMETER EROSION BARRIER



-  = MULCH METHOD 3
-  = INLET PIPE PROTECTION
-  = TEMPORARY DITCH CHECKS
-  = RIP RAP
-  = EROSION CONTROL BLANKET
-  = TURF REINFORCEMENT MAT
-  = PERIMETER EROSION BARRIER

FILE NAME =	USER NAME = grantpm	DESIGNED -	REVISED -
es:\pw_work\p\dot\grantpm\d0261271\0207	11-shr-eros.dgn	DRAWN -	REVISED -
	PLOT SCALE = 40.0000' / in.	CHECKED -	REVISED -
	PLOT DATE = Wed Mar 20 11:45:00 2013	DATE -	REVISED -

**STATE OF ILLINOIS  
DEPARTMENT OF TRANSPORTATION**

<b>IL ROUTE 92 EROSION CONTROL SHEETS</b>				
SCALE:	SHEET	OF	SHEETS	STA. TO STA.

F.A.P. RTE.	SECTION	COUNTY	TOTAL SHEETS	SHEET NO.
599	(83MFT & 103MFT)W	ROCK ISLAND	340	113
CONTRACT NO.			64H11	
ILLINOIS FED. AID PROJECT				