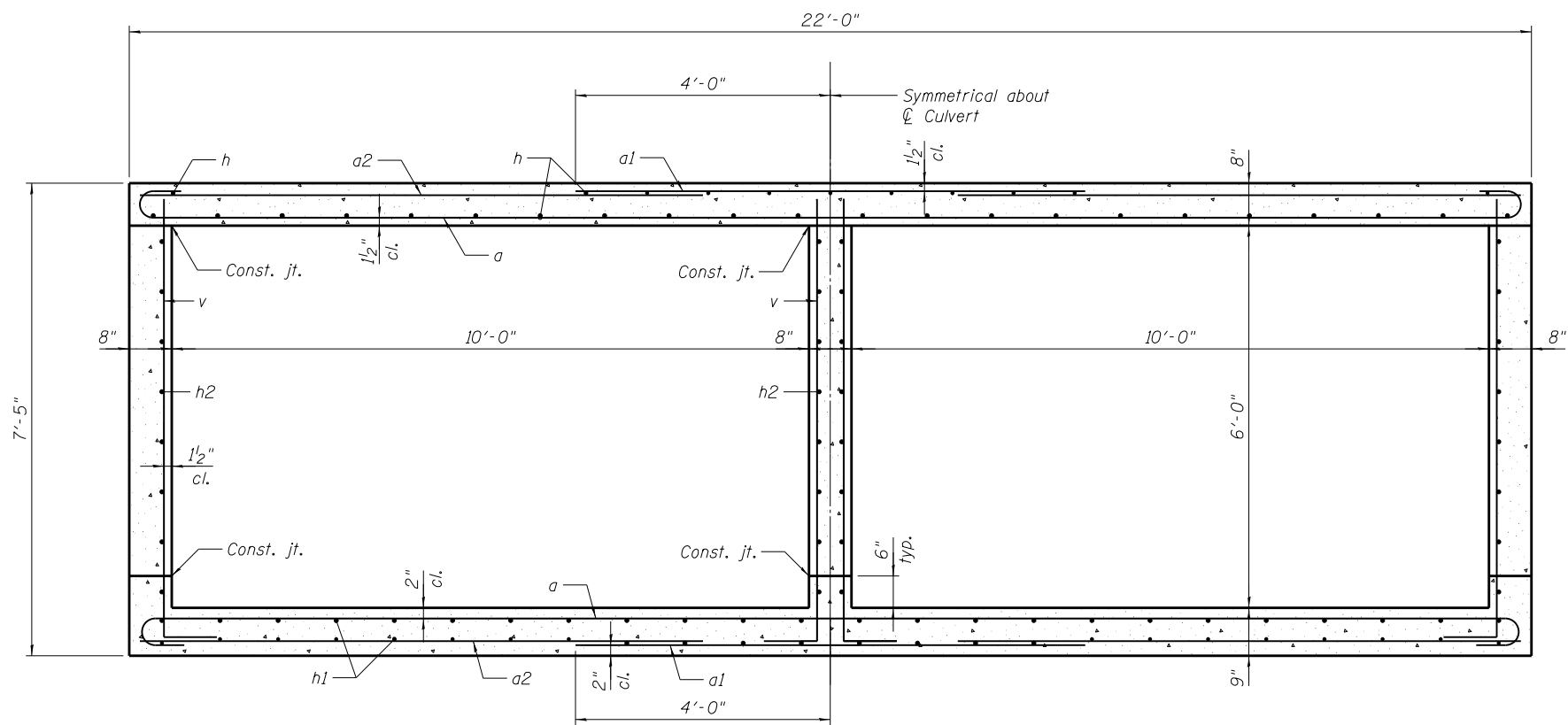
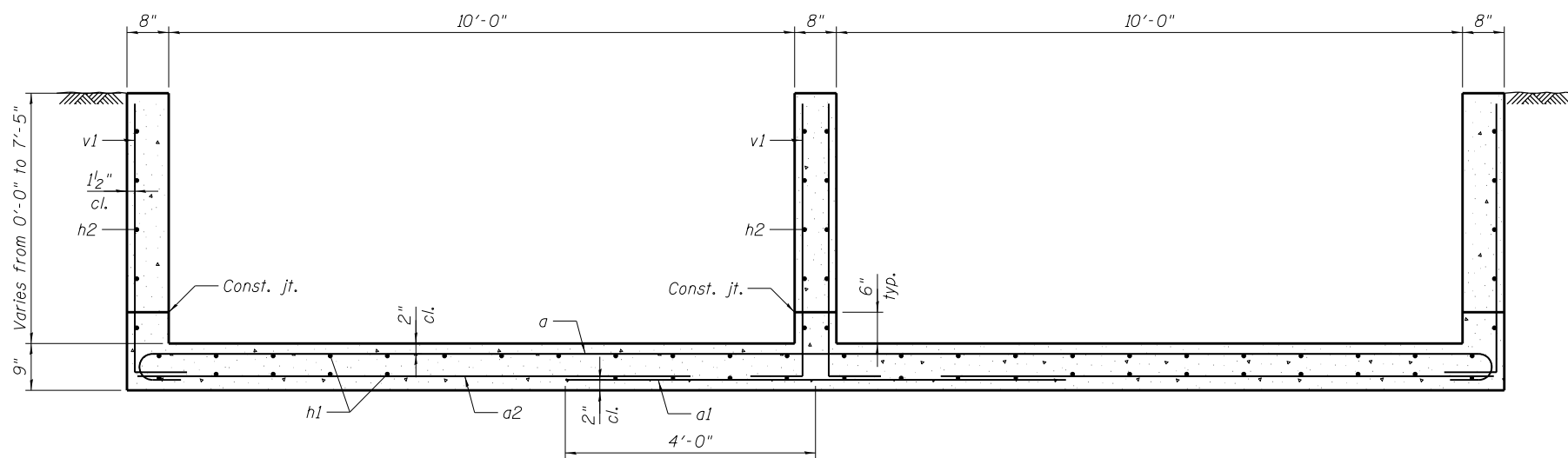


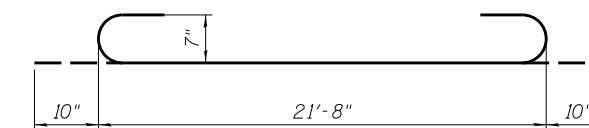
FILE NAME = W:\Projects\2010\100120 PTB 157\25\cadd\Structural\Drawings\IL 92 Culverts\Station844+26.26\Final\_Submittal\_13.0320\844+26.26-64H1-004-EndSectionDetail.dgn



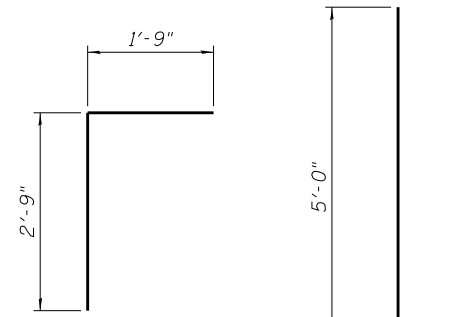
SECTION A-A



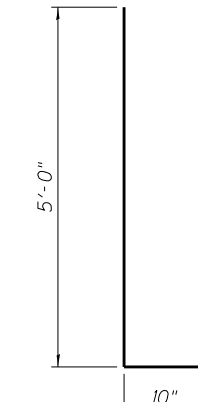
SECTION B-B



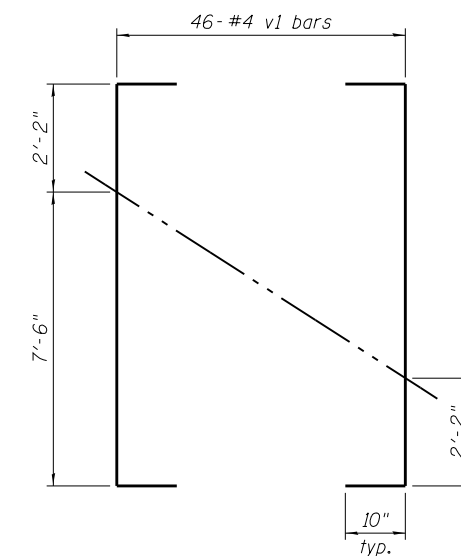
BAR a



BAR d

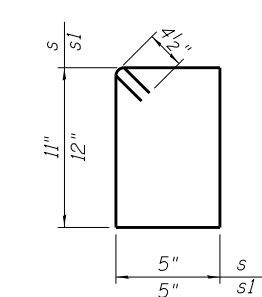


BAR v

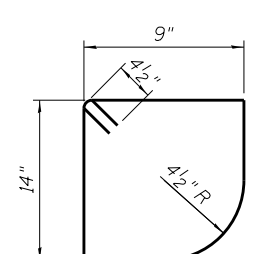


CUTTING DIAGRAM

Order bars full length. Cut as shown and use remainder of bars in opposite wall.



BARS s & s1



BAR s2

BILL OF MATERIAL

(For Information Only)

Bar	No.	Size	Length	Shape
a	43	#7	23'-4"	U
a1	43	#6	8'-0"	—
a2	48	#4	8'-10"	—
a3	2	#4	21'-8"	—
d	23	#4	4'-6"	L
h	31	#6	3'-6"	—
h1	48	#4	26'-0"	—
h2	32	#5	24'-6"	—
h3	12	#6	21'-8"	—
h4	4	#5	20'-4"	—
h5	21	#5	2'-8"	—
h6	40	#6	2'-3"	—
s	21	#4	3'-5"	□
s1	21	#4	3'-7"	□
s2	23	#4	4'-5"	□
v	26	#4	7'-9"	L
v1	46	#4	11'-4"	L
Description		Unit	Quantity	
Concrete Box Culverts		Cu. Yd.	23.7	
Reinforcement Bars		Pound	6,090	