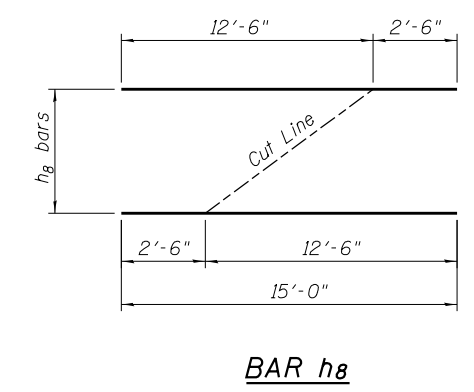
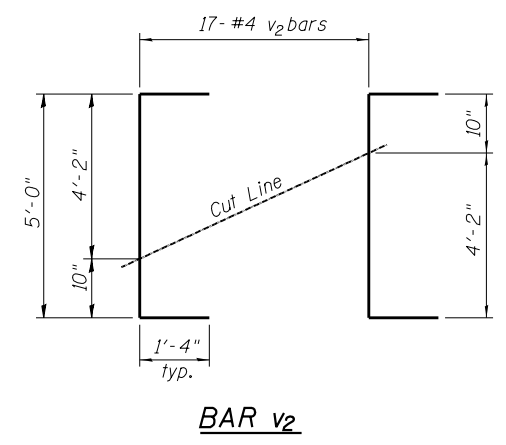
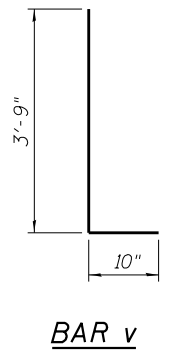
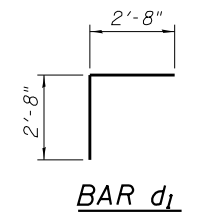
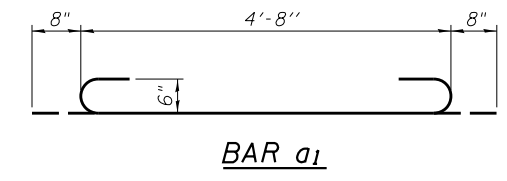
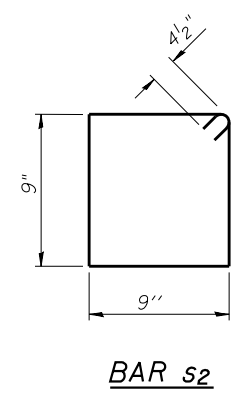
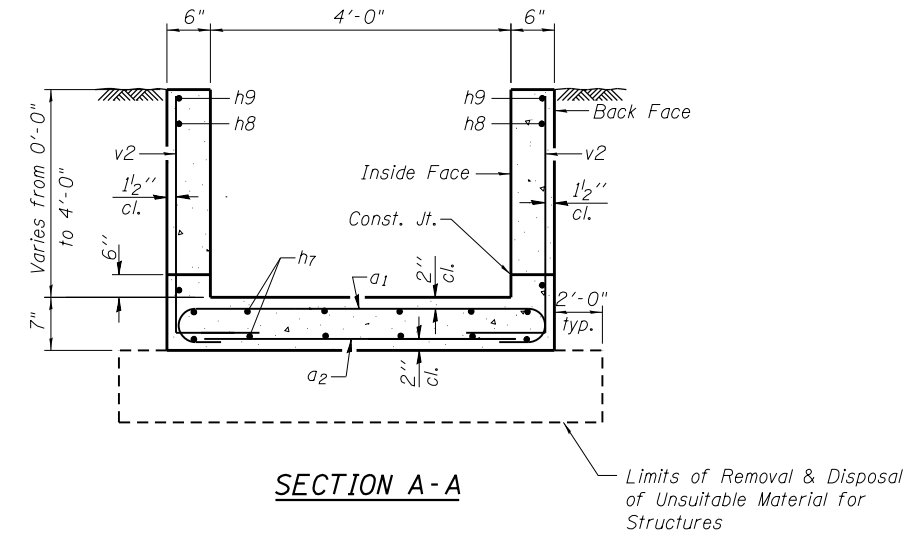


BILL OF MATERIAL
(For Information Only)

Bar	No.	Size	Length	Shape
a ₁	27	#6	6'-0"	
a ₂	18	#4	4'-8"	
a ₃	8	#6	4'-8"	
b	3	#4	4'-8"	
d ₁	5	#4	5'-4"	
h ₇	10	#4	12'-6"	
h ₈	4	#5	14'-5"	
h ₉	2	#5	12'-8"	
h ₅	8	#5	2'-8"	
h ₁₀	10	#6	1'-7"	
s ₂	10	#4	3'-9"	
v	2	#4	4'-7"	
v ₂	17	#4	7'-8"	
DESCRIPTION			UNIT	QTY.
Concrete Box Culverts			Cu. Yd.	3.0
Reinforcement Bars			Pound	720



FILE NAME = W:\Projects\2010\100120 PTB 157\25\cadd\Structural\Drawn\03 IL 92 Culverts\Station937+98.45\Final Submittal\130320\937+98.45-64H1-006-Culv_Extension_Details_L.dgn

WBK WILLS BURKE KELSEY ASSOCIATES LTD.
116 West Main Street, Suite 201
St. Charles, Illinois 60174

USER NAME = hferstl	DESIGNED - AEU	REVISED -
PLOT SCALE =	CHECKED - DLS	REVISED -
PLOT DATE = 3/20/2013	DRAWN - AH	REVISED -
	CHECKED - AEU	REVISED -

**STATE OF ILLINOIS
DEPARTMENT OF TRANSPORTATION**

**BOX CULVERT END SECTION DETAILS
STA. 937+98.45 LT.**

SHEET NO. 6 OF 7 SHEETS

F.A.P. RTE. 599	SECTION (83MFT & 103MFT)W	COUNTY ROCK ISLAND	TOTAL SHEETS 340	SHEET NO. 190
FED. ROAD DIST. NO. ILLINOIS FED. AID PROJECT			CONTRACT NO. 64H11	