

STATE OF ILLINOIS
DEPARTMENT OF TRANSPORTATION
DIVISION OF HIGHWAYS

**PROPOSED
HIGHWAY PLANS**

F.A.P. ROUTE 704 (I-55 BUSN, VETERAN'S PKWY)
SECTION D5 MICRO 2014-1

MICROSURFACING
MCLEAN COUNTY

C-95-027-13

CLEARWATER AVE TO I-55 IN NORMAL

F.A.P. RTE.	SECTION	COUNTY	TOTAL SHEETS	SHEET NO.
704	05 MICRO 2014-1	MCLEAN	25	1
		ILLINOIS	CONTRACT NO. 70A36	

FOR INDEX OF SHEETS, SEE SHEET NO. 2
FOR SUMMARY OF QUANTITIES SEE SHEET NO. 3

CURRENT TRAFFIC DATA

	LEG A	LEG B	LEG C	LEG D	LEG E	LEG F	LEG G
2013 ADT	43,500	45,900	39,400	34,800	28,900	22,400	19,800
P.U. %	90.9	94.6	93.9	94.5	94.9	93.8	93.9
S.U. %	6.0	2.0	2.7	2.2	2.2	3.3	3.1
M.U. %	3.1	3.4	3.4	3.3	2.9	2.9	3.0

LEG "A" IS I-55B FROM CLEARWATER AVENUE TO G.E. ROAD
LEG "B" IS I-55B FROM G.E. ROAD TO JUMER DRIVE
LEG "C" IS I-55B FROM JUMER DRIVE TO COLLEGE AVENUE
LEG "D" IS I-55B FROM COLLEGE AVENUE TO PARKWAY PLAZA DRIVE
LEG "E" IS I-55B FROM PARKWAY PLAZA DRIVE TO FT. JESSE ROAD
LEG "F" IS I-55B FROM FT. JESSE ROAD TO SHEPARD ROAD
LEG "G" IS I-55B FROM SHEPARD ROAD TO F.A.I. 55

DESIGN DESIGNATION

IVA

BRIDGE OMISSION
S.N. 057-0228
STA. 305+08.00 TO
STA. 307+62.00

F.A.P. 704 SECTION BEGINS:
STA. 277+06.00
(INTERSECTION OF F.A.P. 704
AND CLEARWATER AVE)

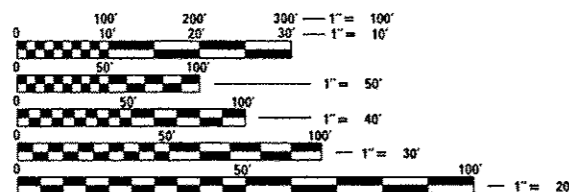
STATION EQUATION
STA 392+10.00 (BK) =
STA 392+00.00 (AH)



LOCATION OF SECTION INDICATED THUS: — ■ —

F.A.P. 704 SECTION ENDS:
STA. 395+00.00
(S. END OF S.N. 057-0069)

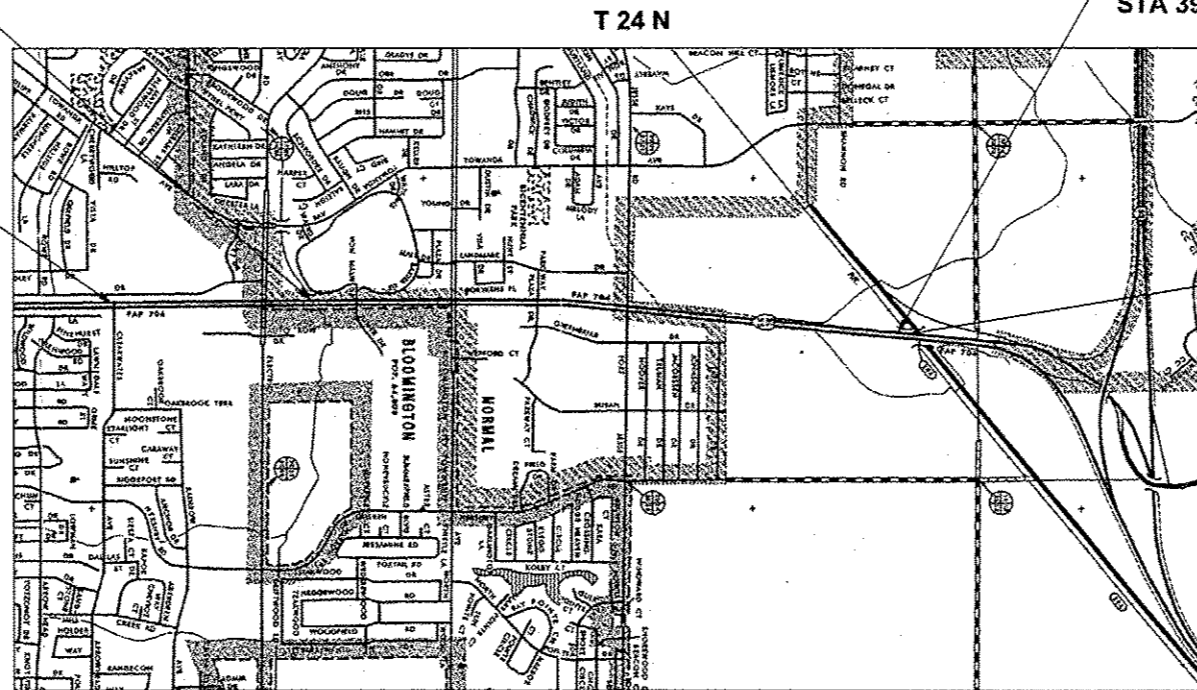
R 2 E



FULL SIZE PLANS HAVE BEEN PREPARED USING STANDARD
ENGINEERING SCALES. REDUCED SIZED PLANS WILL NOT
CONFORM TO STANDARD SCALES. IN MAKING MEASUREMENTS
ON REDUCED PLANS, THE ABOVE SCALES MAY BE USED.

J.U.L.I.E.
JOINT UTILITY LOCATION INFORMATION FOR EXCAVATION
1-800-892-0123
OR 811 (NORMAL TOWNSHIP)

PROJECT ENGINEER: NANCY FASIG
SQUAD LEADER: BRIAN J. HOGAN
DESIGNER: BENJAMIN J. DETERS
CONTRACT NO. 70A36



GROSS LENGTH = 11,804.00 FT. = 2.236 MILE
NET LENGTH = 11,550.00 FT. = 2.187 MILE

STATE OF ILLINOIS
DEPARTMENT OF TRANSPORTATION
DIVISION OF HIGHWAYS

SUBMITTED MAY 22 2013
Joseph E. Crowley
DEPUTY DIRECTOR OF HIGHWAYS, REGION ENGINEER

June 28 2013
John D. Baranzelli, P.E.
acting ENGINEER OF DESIGN AND ENVIRONMENT

June 28 2013
Omer Omerhan, P.E.
DIRECTOR OF HIGHWAYS, CHIEF ENGINEER

**PRINTED BY THE AUTHORITY
OF THE STATE OF ILLINOIS**