

STATE OF ILLINOIS
DEPARTMENT OF TRANSPORTATION
DIVISION OF HIGHWAYS

**PROPOSED
HIGHWAY PLANS**

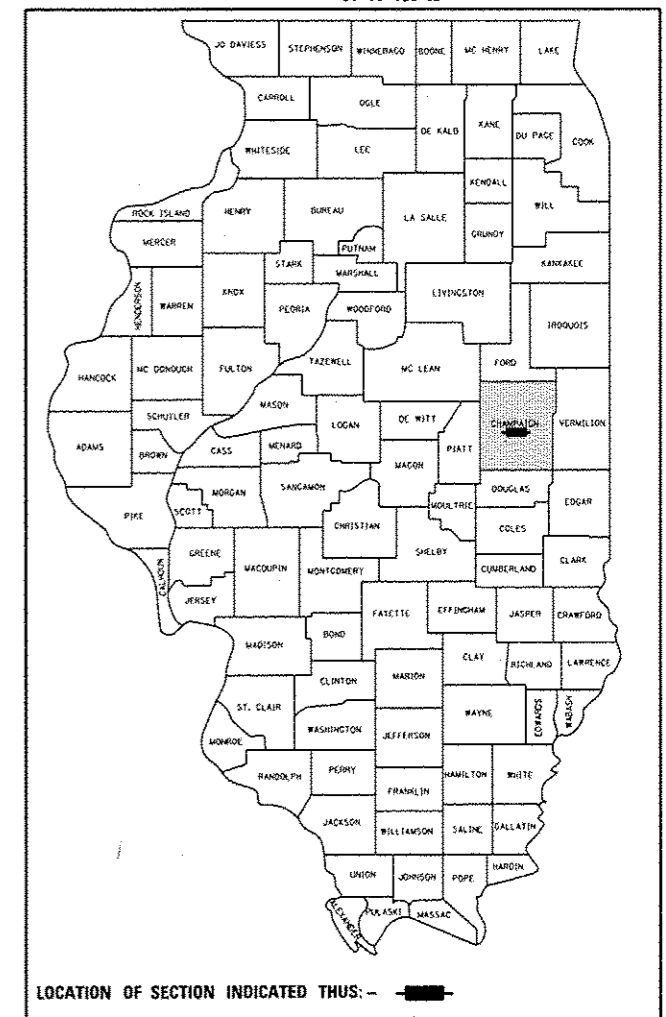
**F.A.P. RTE. 719 / (U.S. 150) & F.A.P. RTE. 804 / (PROSPECT AVE.)
SECTION D5 PATCHING 2014-3
PATCHING
CHAMPAIGN COUNTY**

C-95-028-13
I-57 TO MATTIS AVE. AND SOUTHBOUND TURN LANE AT BLOOMINGTON ROAD

F.A.P. RTE.	SECTION	COUNTY	TOTAL SHEETS	SHEET NO.
•	D5 PATCHING 2014-3	CHAMPAIGN	9	1
		ILLINOIS	CONTRACT NO. 70A37	

• F.A.P. 719 & F.A.P. 804

05-95-028-13

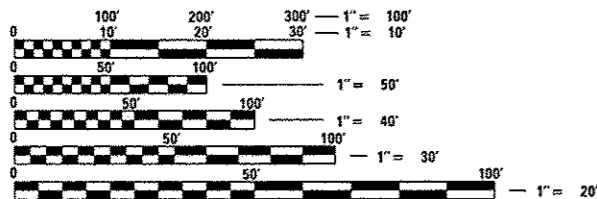
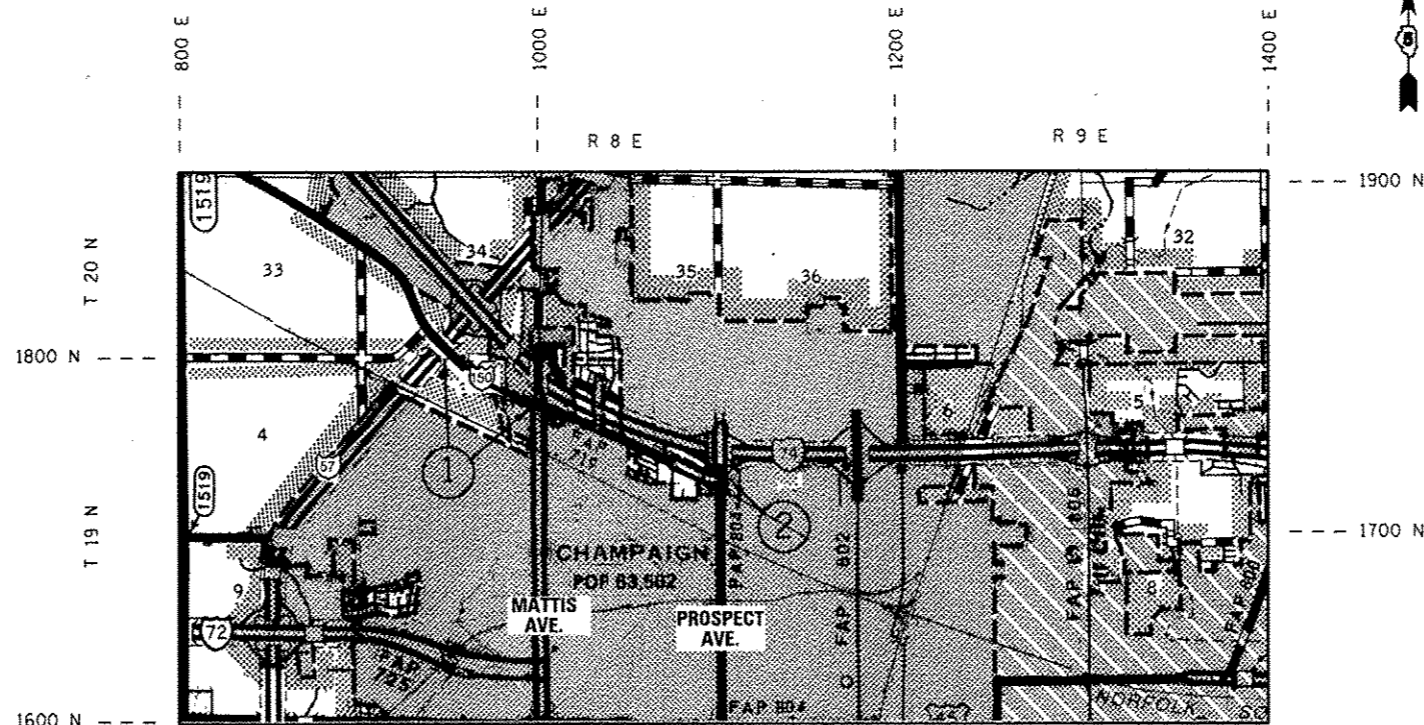


FOR INDEX OF SHEETS, SEE SHEET NO. 2
FOR SUMMARY OF QUANTITIES, SEE SHEET NO. 4

CURRENT TRAFFIC DATA

LOCATION #1: F.A.P. RTE. 719 / (U.S. 150)
FROM I-57 OVERPASS TO MATTIS AVE.
AVERAGE ADT = 8,100

LOCATION #2: F.A.P. RTE. 804 / (PROSPECT AVE.)
FROM I-74 EB RAMPS TO U.S. 150
(BLOOMINGTON RD.)
AVERAGE ADT = 28,300

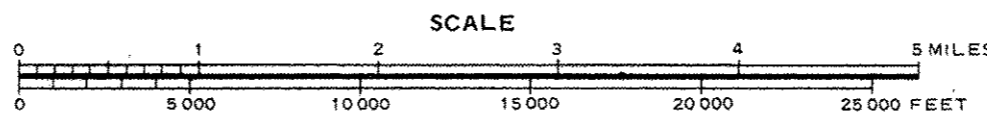


FULL SIZE PLANS HAVE BEEN PREPARED USING STANDARD ENGINEERING SCALES. REDUCED SIZED PLANS WILL NOT CONFORM TO STANDARD SCALES. IN MAKING MEASUREMENTS ON REDUCED PLANS, THE ABOVE SCALES MAY BE USED.

J.U.L.I.E.
JOINT UTILITY LOCATION INFORMATION FOR EXCAVATION
1-800-892-0123
OR 811

PROJECT ENGINEER: JASON STULTS
SQUAD LEADER: GREG EAGLIN
DESIGNER: CARL BAKER
PHONE NUMBER: (217)-465-4181

CONTRACT NO. 70A37



GROSS LENGTH = 4889.10 FT. = 0.926 MILES
NET LENGTH = 3148.90 FT. = 0.596 MILES

SEE PAGE 3 FOR LOCATION MAPS, GROSS & NET LENGTHS OF PROJECT BY LOCATION

STATE OF ILLINOIS
DEPARTMENT OF TRANSPORTATION
DIVISION OF HIGHWAYS

SUBMITTED 0522 20 13

Joseph E. Crowe, CK4G
DEPUTY DIRECTOR OF HIGHWAYS, REGION ENGINEER

John D. Baranelli, PE
ENGINEER OF DESIGN AND ENVIRONMENT

June 28 20 13

Omer Osman, PE
DIRECTOR OF HIGHWAYS, CHIEF ENGINEER

**PRINTED BY THE AUTHORITY
OF THE STATE OF ILLINOIS**