

BENCHMARK #25 : CHISELED SQUARE IN NORTHEAST
 WINGWALL OF SN 054-0005
 OVER SALT CREEK
 ELEVATION = 561.89



PROP. CURVE ARO01-2
 PI STA. = 56+27.81
 $\Delta = 61^\circ 50' 49''$ (RT)
 $D = 68^\circ 38' 44''$
 $R = 83.47'$
 $T = 50.00'$
 $L = 90.10'$
 $E = 13.83'$
 $e = N/A$
 $T.R. = N/A$
 $S.E. RUN = N/A$
 $P.C. STA. = 55+77.81$
 $P.T. STA. = 56+67.90$

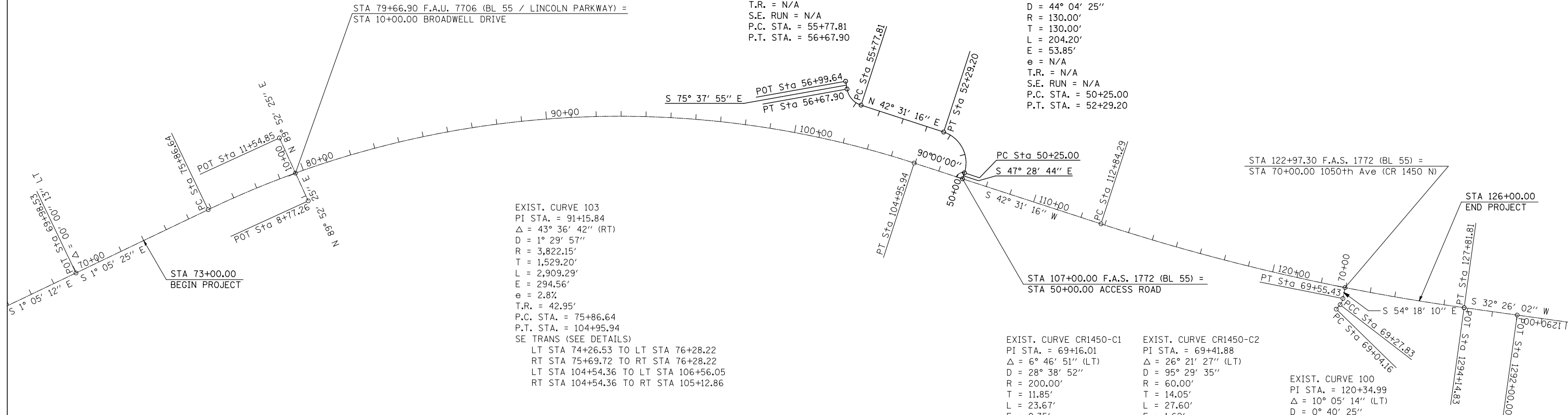
PROP. CURVE ARO01-1
 PI STA. = 51+55.00
 $\Delta = 90^\circ 00' 00''$ (LT)
 $D = 44^\circ 04' 25''$
 $R = 130.00'$
 $T = 130.00'$
 $L = 204.20'$
 $E = 53.85'$
 $e = N/A$
 $T.R. = N/A$
 $S.E. RUN = N/A$
 $P.C. STA. = 50+25.00$
 $P.T. STA. = 52+29.20$

EXIST. CURVE 103
 PI STA. = 91+15.84
 $\Delta = 43^\circ 36' 42''$ (RT)
 $D = 1^\circ 29' 57''$
 $R = 3,822.15'$
 $T = 1,529.20'$
 $L = 2,909.29'$
 $E = 294.56'$
 $e = 2.8\%$
 $T.R. = 42.95'$
 $P.C. STA. = 75+86.64$
 $P.T. STA. = 104+95.94$
 SE TRANS (SEE DETAILS)
 LT STA 74+26.53 TO LT STA 76+28.22
 RT STA 75+69.72 TO RT STA 76+28.22
 LT STA 104+54.36 TO LT STA 106+56.05
 RT STA 104+54.36 TO RT STA 105+12.86

EXIST. CURVE CR1450-C1
 PI STA. = 69+16.01
 $\Delta = 6^\circ 46' 51''$ (LT)
 $D = 28^\circ 38' 52''$
 $R = 200.00'$
 $T = 11.85'$
 $L = 23.67'$
 $E = 0.35'$
 $e = N/A$
 $T.R. = N/A$
 $S.E. RUN = N/A$
 $P.C. STA. = 69+04.16$
 $P.C.C. STA. = 69+27.83$

EXIST. CURVE CR1450-C2
 PI STA. = 69+41.88
 $\Delta = 26^\circ 21' 27''$ (LT)
 $D = 95^\circ 29' 35''$
 $R = 60.00'$
 $T = 14.05'$
 $L = 27.60'$
 $E = 1.62'$
 $e = N/A$
 $T.R. = N/A$
 $S.E. RUN = N/A$
 $P.C. STA. = 69+27.83$
 $P.T. STA. = 69+55.43$

EXIST. CURVE 100
 PI STA. = 120+34.99
 $\Delta = 10^\circ 05' 14''$ (LT)
 $D = 0^\circ 40' 25''$
 $R = 8,505.95'$
 $T = 750.70'$
 $L = 1,497.52'$
 $E = 33.06'$
 $e = RC (1.5\%)$
 $T.R. = 47.66'$
 $P.C. STA. = 112+84.29$
 $P.T. STA. = 127+81.81$
 SE TRANS (SEE DETAILS)
 RT STA 111+50.06 TO RT STA 113+09.02
 RT STA 127+57.08 TO RT STA 129+16.04



LAST SAVED = 5/23/2013 10:39:40 AM
 PEN TABLE = 1/8"=1' (A3)
 PLOT DRIVER = TR-18pdf-Block-Half.plt



FILE NAME =	USER NAME = jepettibone	DESIGNED -	REVISED -
\\06103\cad\l\plans\006.D672789-Sht-ATB.dgn		DRAWN -	REVISED -
PLOT SCALE = 400.0000' / IN.		CHECKED -	REVISED -
PLOT DATE = 5/23/2013 10:39:40 AM		DATE -	REVISED -

**STATE OF ILLINOIS
 DEPARTMENT OF TRANSPORTATION**

ALIGNMENT, TIES & BENCHMARKS

SCALE: 1"=200' SHEET NO. 1 OF 2 SHEETS STA. TO STA.

F.A.U. RTE.	SECTION	COUNTY	TOTAL SHEETS	SHEET NO.
7706	23(B-1)	LOGAN	179	29
BUS. LOOP 55 OVER SALT CREEK			CONTRACT NO. 72789	
FED. ROAD DIST. NO.		ILLINOIS FED. AID PROJECT		