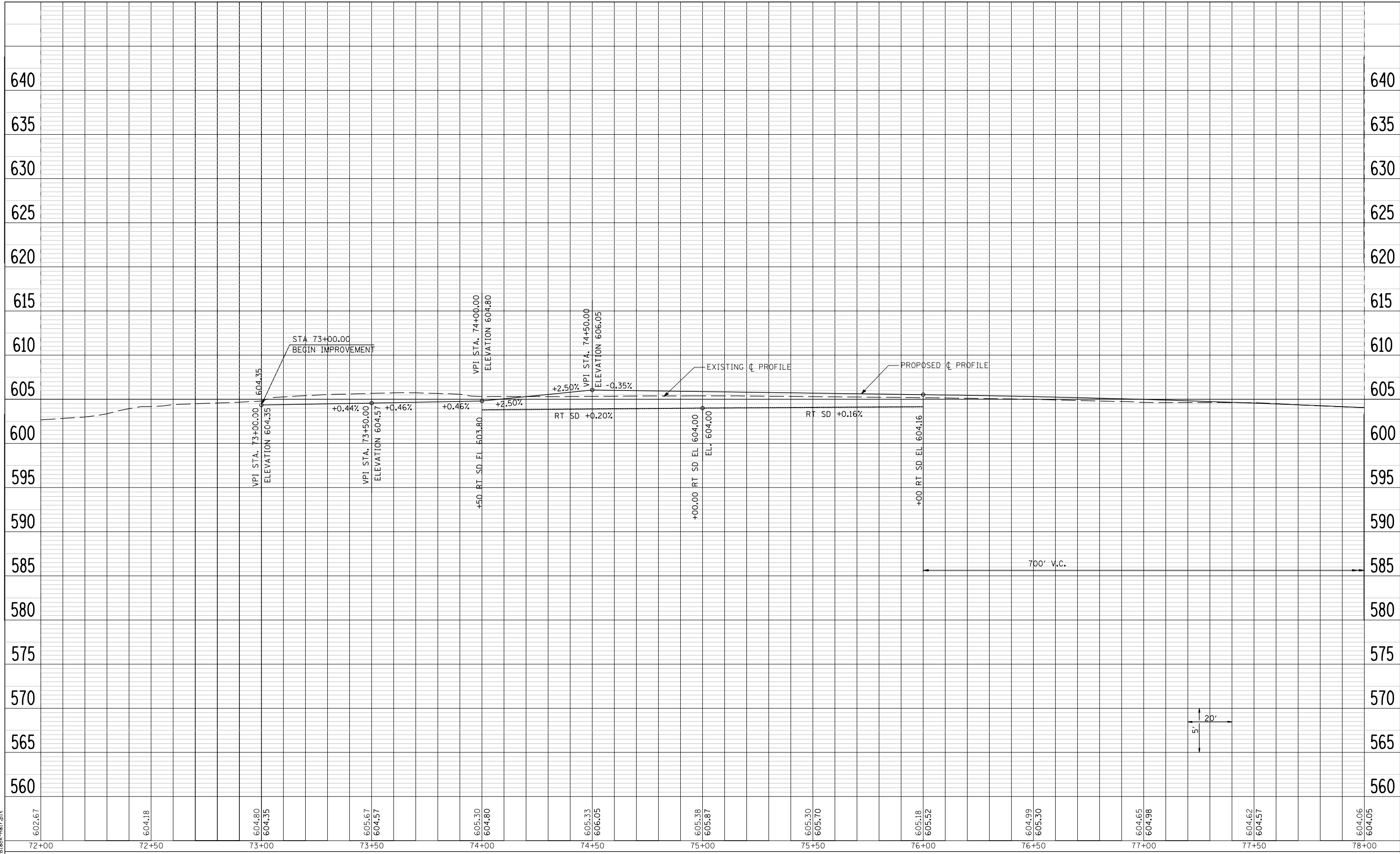


PLAN	SURVEYED	BY	DATE
	PLOTTED		
	GRADES CHECKED		
	STRUCTURE NOTATIONS CHECKED		
	NOTE BOOK NO.		
	CADD FILE NAME		

PROFILE	SURVEYED	BY	DATE
	PLOTTED		
	GRADES CHECKED		
	STRUCTURE NOTATIONS CHECKED		
	NOTE BOOK NO.		
	CADD FILE NAME		



LAST SAVED = 5/23/2013
 PEN TABLE = 08-HaIF.tbl
 PLOT DRIVER = Trx8pdf-Black-HaIF.plt

FILE NAME =	USER NAME = jepettibone	DESIGNED -	REVISED -
:\06103\cod\plans\007_0672789-Sht-Pln\F-Bus55.dgn		DRAWN -	REVISED -
PLOT SCALE = 40.0000' / IN.		CHECKED -	REVISED -
PLOT DATE = 5/23/2013 10:39:47 AM		DATE -	REVISED -

**STATE OF ILLINOIS
 DEPARTMENT OF TRANSPORTATION**

PROFILE - BUSINESS LOOP 55			
SCALE: 1" = 20'	SHEET NO. 1 OF 9 SHEETS	STA. 72+00.00	TO STA. 78+00.00

F.A.U. RTE.	SECTION	COUNTY	TOTAL SHEETS	SHEET NO.
7706	23(B-1)	LOGAN	179	32
BUS. LOOP 55 OVER SALT CREEK			CONTRACT NO. 72789	
FED. ROAD DIST. NO. ILLINOIS FED. AID PROJECT				