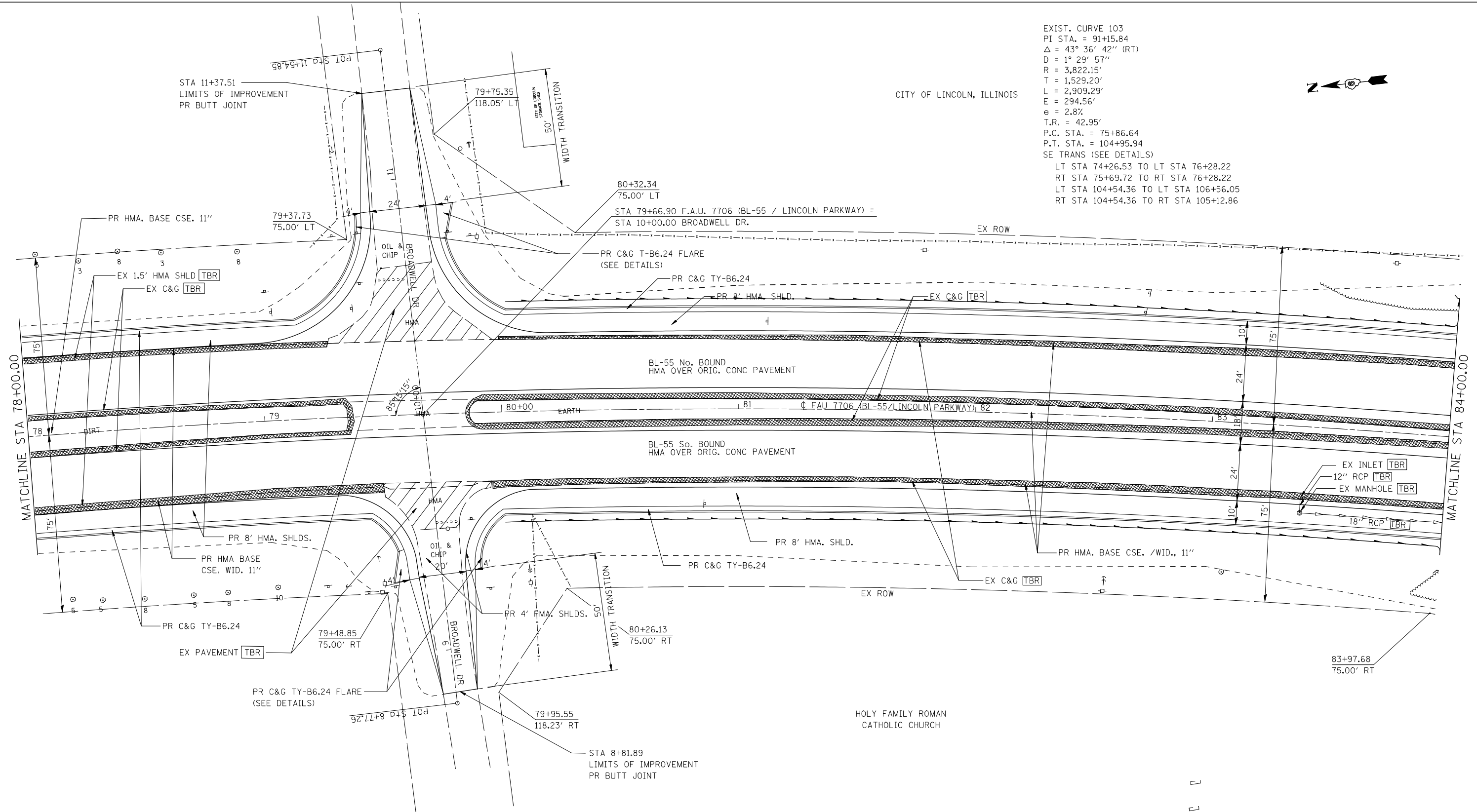


CITY OF LINCOLN, ILLINOIS

EXIST. CURVE 103
 PI STA. = 91+15.84
 $\Delta = 43^\circ 36' 42''$ (RT)
 $D = 1^\circ 29' 57''$
 $R = 3,822.15'$
 $T = 1,529.20'$
 $L = 2,909.29'$
 $E = 294.56'$
 $e = 2.8\%$
 $T.R. = 42.95'$
 P.C. STA. = 75+86.64
 P.T. STA. = 104+95.94
 SE TRANS (SEE DETAILS)
 LT STA 74+26.53 TO LT STA 76+28.22
 RT STA 75+69.72 TO RT STA 76+28.22
 LT STA 104+54.36 TO LT STA 106+56.05
 RT STA 104+54.36 TO RT STA 105+12.86



STA 83+87 TO STA 84+00
 PR TREE REMOVAL = 0.01 AC
 NOTE:
 1) TREE REMOVAL AREA COMPUTED
 FROM CONSTRUCTION LIMITS TO
 CONSTRUCTION LIMITS
 FOR MEASUREMENT OF PAYMENT
 2) SAVE AS MANY TREES AS
 POSSIBLE.

LAST SAVED = 5/23/2013
 PEN TABLE = 0614143
 PLOT DRIVER = TR-18pdf-Block-Half.plt

FILE NAME =	USER NAME = jpettibone	DESIGNED - JCN	REVISED -
1:\06103\cad\l\plans\007.D672789-Sht-P1	PrF-Bus95.dgn	DRAWN - JJB	REVISED -
	PLOT SCALE = 40.0000' / IN.	CHECKED - VJM	REVISED -
	PLOT DATE = 5/23/2013 10:39:47 AM	DATE - 08/2007	REVISED -

**STATE OF ILLINOIS
 DEPARTMENT OF TRANSPORTATION**

PLAN - BUSINESS LOOP 55

SCALE: 1" = 20' SHEET NO. 2 OF 9 SHEETS STA. 78+00 TO STA. 84+00

F.A.U. RTE.	SECTION	COUNTY	TOTAL SHEETS	SHEET NO.
7706	23(B-1)	LOGAN	179	33
BUS. LOOP 55 OVER SALT CREEK			CONTRACT NO. 72789	
FED. ROAD DIST. NO.		ILLINOIS FED. AID PROJECT		