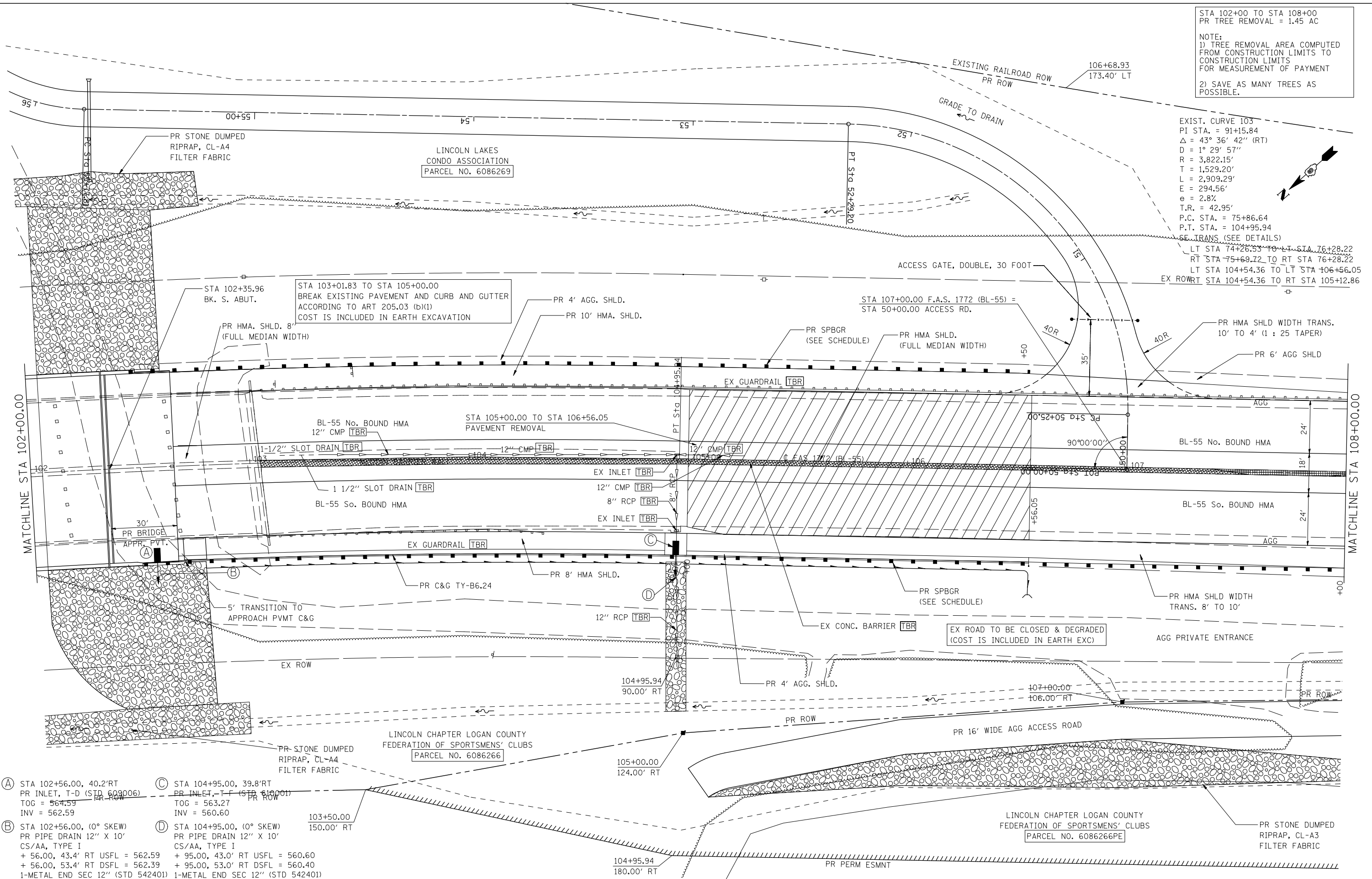
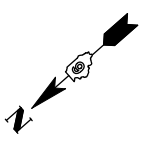


STA 102+00 TO STA 108+00  
PR TREE REMOVAL = 1.45 AC

NOTE:  
1) TREE REMOVAL AREA COMPUTED FROM CONSTRUCTION LIMITS TO CONSTRUCTION LIMITS FOR MEASUREMENT OF PAYMENT  
2) SAVE AS MANY TREES AS POSSIBLE.

EXIST. CURVE 103  
PI STA. = 91+15.84  
 $\Delta = 43^\circ 36' 42''$  (RT)  
D = 1° 29' 57"  
R = 3,822.15'  
T = 1,529.20'  
L = 2,909.29'  
E = 294.56'  
e = 2.8%  
T.R. = 42.95'  
P.C. STA. = 75+86.64  
P.T. STA. = 104+95.94  
SE TRANS. (SEE DETAILS)  
LT STA 74+26.53 TO LT STA 76+28.22  
RT STA 75+69.12 TO RT STA 76+28.22  
LT STA 104+54.36 TO LT STA 106+56.05  
EX ROW RT STA 104+54.36 TO RT STA 105+12.86



- (A) STA 102+56.00, 40.2' RT  
PR INLET, T-D (STD 609006)  
TOG = 564.59  
INV = 562.59
- (B) STA 102+56.00, (0° SKEW)  
PR PIPE DRAIN 12" X 10"  
CS/AA, TYPE I  
+ 56.00, 43.4' RT USFL = 562.59  
+ 56.00, 53.4' RT DSFL = 562.39  
1-METAL END SEC 12" (STD 542401)
- (C) STA 104+95.00, 39.8' RT  
PR INLET, T-F (STD 610001)  
TOG = 563.27  
INV = 560.60
- (D) STA 104+95.00, (0° SKEW)  
PR PIPE DRAIN 12" X 10"  
CS/AA, TYPE I  
+ 95.00, 43.0' RT USFL = 560.60  
+ 95.00, 53.0' RT DSFL = 560.40  
1-METAL END SEC 12" (STD 542401)

LAST SAVED = 5/23/2013  
 PEN TABLE = 10-HALF-141  
 PLOT DRIVER = TR-18pdf-Block-Half.plt

|  |                         |                |           |
|--|-------------------------|----------------|-----------|
| FILE NAME =  | USER NAME = jepettibone | DESIGNED - JCN | REVISED - |
| 1:\06103\cad\1\plans\007.D672789-Sht-P1-Pr-F-Bus95.dgn |                         | DRAWN - JJB    | REVISED - |
| PLOT SCALE = 40.0000' / IN.                            |                         | CHECKED - VJM  | REVISED - |
| PLOT DATE = 5/23/2013 10:39:57 AM                      |                         | DATE - 08/2007 | REVISED - |

**STATE OF ILLINOIS  
DEPARTMENT OF TRANSPORTATION**

**PLAN - BUSINESS LOOP 55**

SCALE: 1" = 20'    SHEET NO. 6 OF 9 SHEETS    STA. 102+00 TO STA. 108+00

|                              |         |                           |                    |           |
|------------------------------|---------|---------------------------|--------------------|-----------|
| F.A.U. RTE.                  | SECTION | COUNTY                    | TOTAL SHEETS       | SHEET NO. |
| 7706                         | 23(B-1) | LOGAN                     | 179                | 41        |
| BUS. LOOP 55 OVER SALT CREEK |         |                           | CONTRACT NO. 72789 |           |
| FED. ROAD DIST. NO.          |         | ILLINOIS FED. AID PROJECT |                    |           |