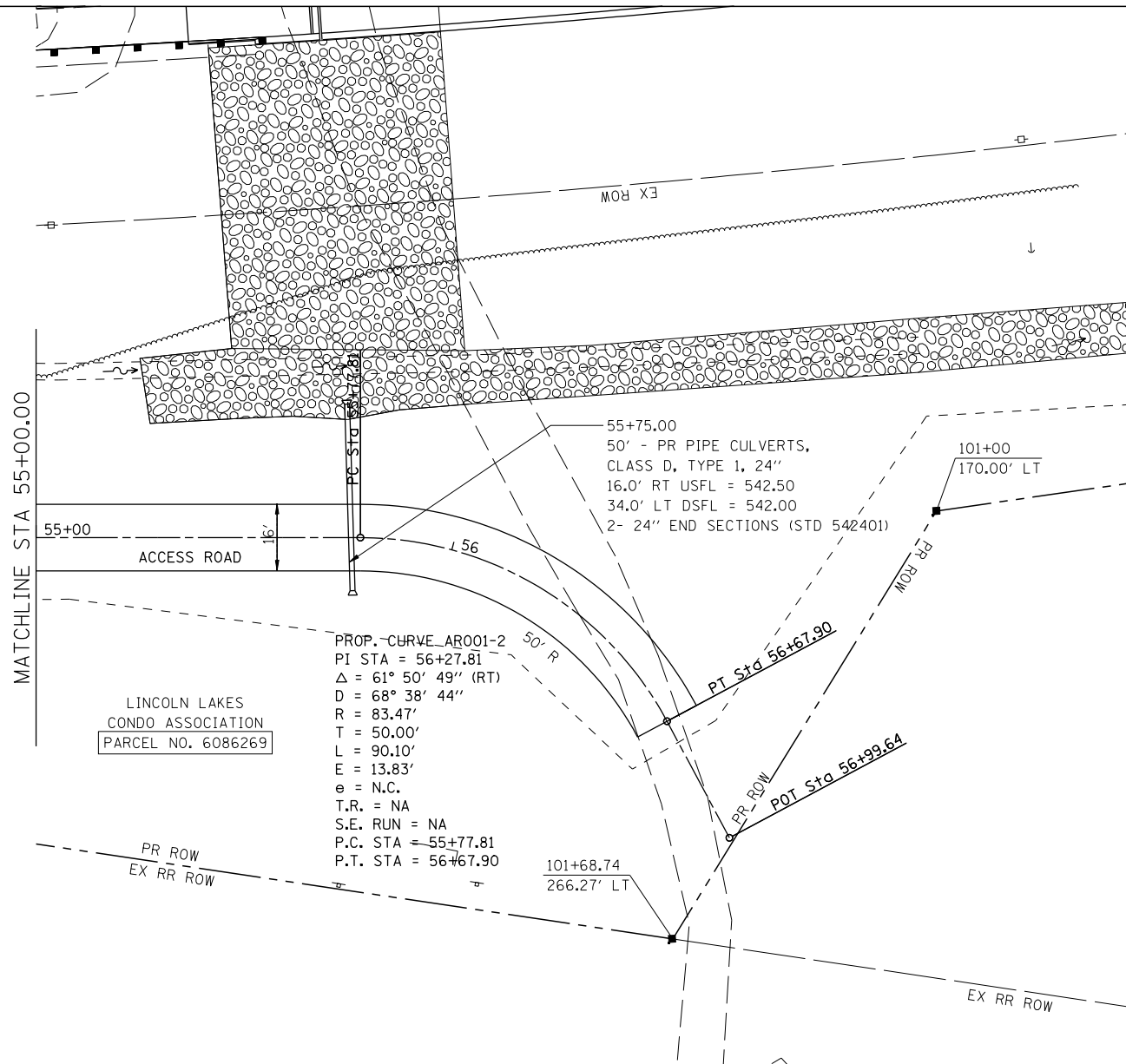
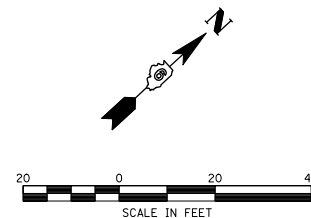


| | | | |
|------|-----------|----|------|
| PLAN | SURVEYED | BY | DATE |
| | PLOTTED | | |
| | CHECKED | | |
| | AT | | |
| | FILE NAME | | |
| | NO. | | |

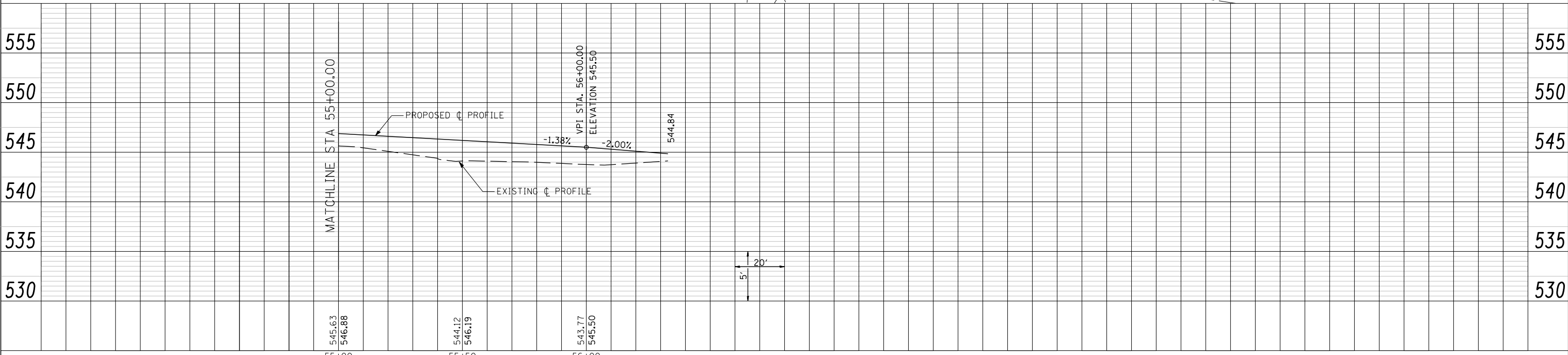
| | | | |
|---------|-----------|----|------|
| PROFILE | SURVEYED | BY | DATE |
| | PLOTTED | | |
| | CHECKED | | |
| | AT | | |
| | FILE NAME | | |
| | NO. | | |



LINCOLN LAKES
CONDO ASSOCIATION
PARCEL NO. 6086269

PROP. CURVE AR001-2
PI STA = 56+27.81
Δ = 61° 50' 49" (RT)
D = 68° 38' 44"
R = 83.47'
T = 50.00'
L = 90.10'
E = 13.83'
e = N.C.
T.R. = NA
S.E. RUN = NA
P.C. STA = 55+77.81
P.T. STA = 56+67.90

55+75.00
50' - PR PIPE CULVERTS,
CLASS D, TYPE 1, 24"
16.0' RT USFL = 542.50
34.0' LT DSFL = 542.00
2- 24" END SECTIONS (STD 542401)



MATCHLINE STA 55+00.00

| | | | |
|--------|-------|------------|-----------|
| 545.63 | 55+00 | DESIGNED - | REVISED - |
| 546.88 | | DRAWN - | REVISED - |
| 544.12 | 55+50 | CHECKED - | REVISED - |
| 546.19 | | DATE - | REVISED - |
| 543.77 | 56+00 | | |
| 545.50 | | | |

**STATE OF ILLINOIS
DEPARTMENT OF TRANSPORTATION**

PLAN & PROFILE - ACCESS ROAD

SCALE: 1"=20' SHEET NO. 2 OF 2 SHEETS STA 55+00 TO STA 56+67.90

| | | | | |
|------------------------------|---------|--------|---------------------------|-----------|
| F.A.U. RTE. | SECTION | COUNTY | TOTAL SHEETS | SHEET NO. |
| 7706 | 23(B-1) | LOGAN | 179 | 51 |
| BUS. LOOP 55 OVER SALT CREEK | | | CONTRACT NO. 72789 | |
| FED. ROAD DIST. NO. | | | ILLINOIS FED. AID PROJECT | |

LAST SAVED = 5/23/2013
PEN TABLE = 08-HaIF.tbl
PLOT DRIVER = TR-28pdf-Black-HaIF.plt