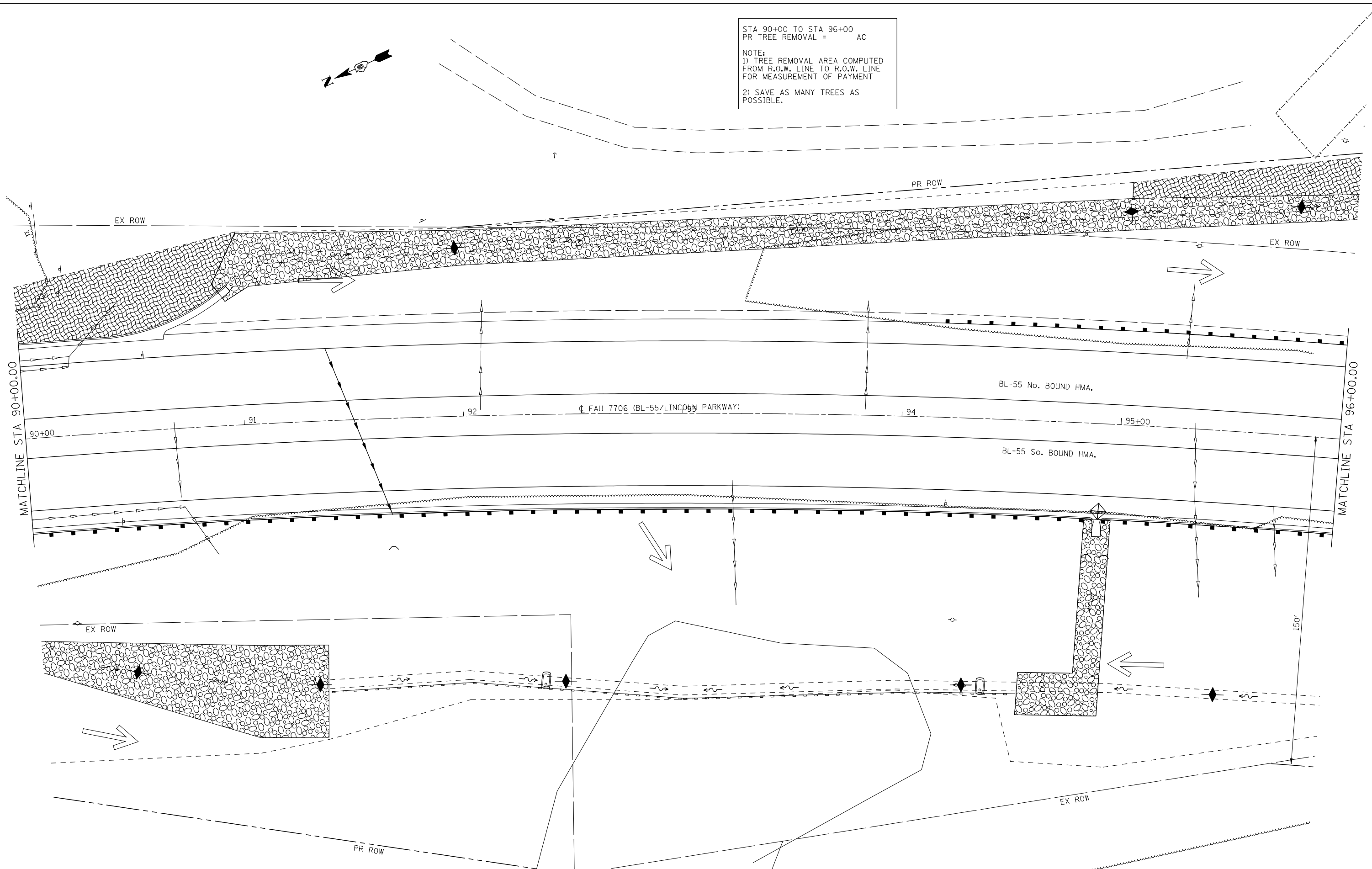


STA 90+00 TO STA 96+00  
 PR TREE REMOVAL =      AC

NOTE:  
 1) TREE REMOVAL AREA COMPUTED  
 FROM R.O.W. LINE TO R.O.W. LINE  
 FOR MEASUREMENT OF PAYMENT  
 2) SAVE AS MANY TREES AS  
 POSSIBLE.



LAST SAVED = 5/23/2013  
 PEN TABLE = 961441.fnt  
 PLOT DRIVER = TR-18pdf-Block-Half.plt

FILE NAME =	USER NAME = jepettibone	DESIGNED - JCN	REVISED -
1:\06103\cad\1\plans\012_0672789-Sht-Envs-Bus95.dgn		DRAWN - JJB	REVISED -
	PLOT SCALE = 40.0000' / IN.	CHECKED - VJM	REVISED -
	PLOT DATE = 5/23/2013 10:40:30 AM	DATE - 08/2007	REVISED -

**STATE OF ILLINOIS  
 DEPARTMENT OF TRANSPORTATION**

**STORMWATER POLLUTION PREVENTION PLAN**

SCALE: 1" = 20'    SHEET NO. 8 OF 15 SHEETS    STA. 90+00 TO STA. 96+00

F.A.U. RTE.	SECTION	COUNTY	TOTAL SHEETS	SHEET NO.
7706	23(B-1)	LOGAN	179	60
BUS. LOOP 55 OVER SALT CREEK			CONTRACT NO. 72789	
FED. ROAD DIST. NO.		ILLINOIS FED. AID PROJECT		