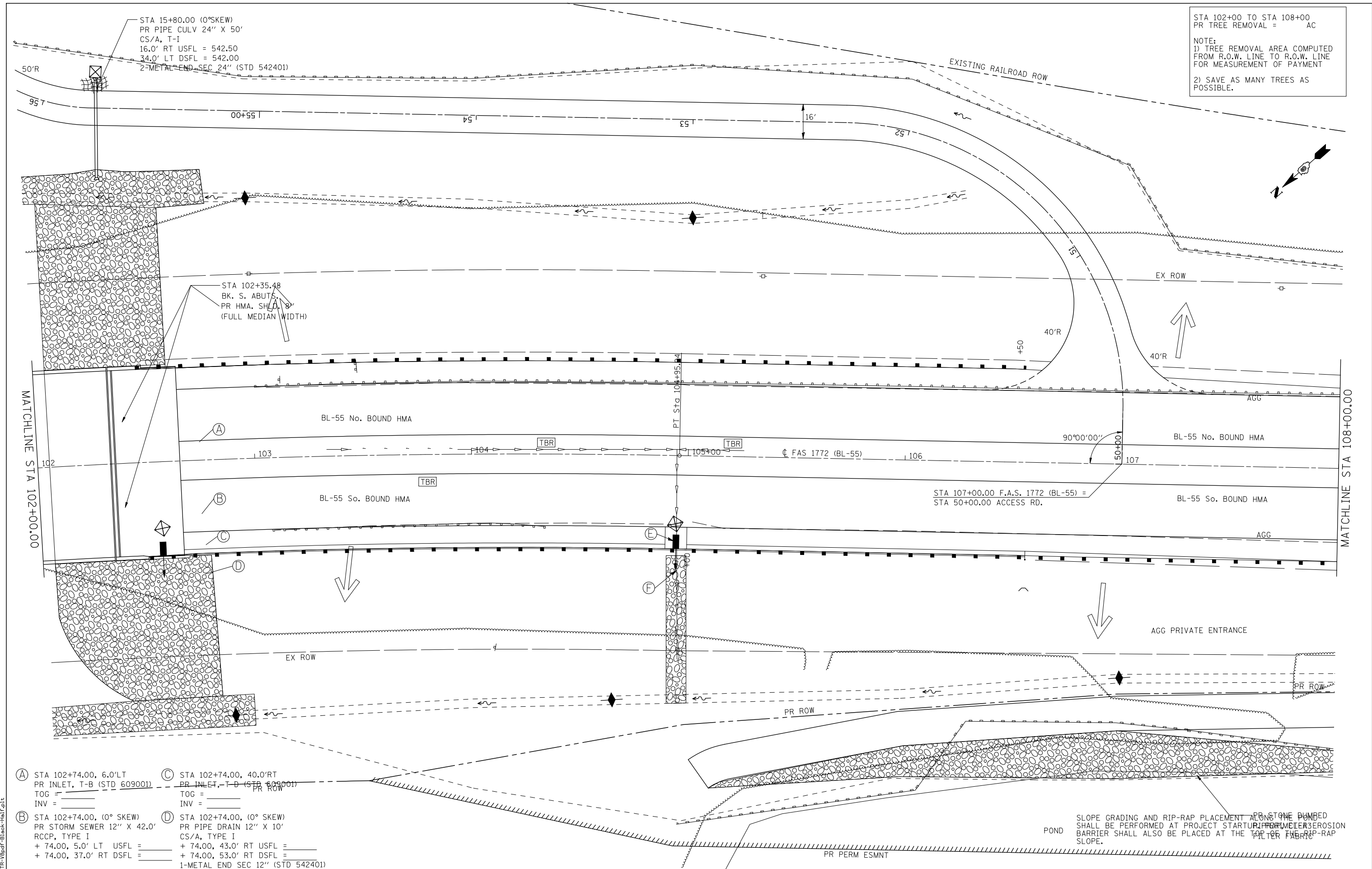


STA 102+00 TO STA 108+00
PR TREE REMOVAL = AC

NOTE:
1) TREE REMOVAL AREA COMPUTED FROM R.O.W. LINE TO R.O.W. LINE FOR MEASUREMENT OF PAYMENT
2) SAVE AS MANY TREES AS POSSIBLE.



- (A) STA 102+74.00, 6.0' LT PR INLET, T-B (STD 609001)
TOG = _____
INV = _____
- (B) STA 102+74.00, (0° SKEW) PR STORM SEWER 12" X 42.0' RCCP, TYPE I
+ 74.00, 5.0' LT USFL = _____
+ 74.00, 37.0' RT DSFL = _____
- (C) STA 102+74.00, 40.0' RT PR INLET, T-D (STD 609001)
TOG = _____
INV = _____
- (D) STA 102+74.00, (0° SKEW) PR PIPE DRAIN 12" X 10' CS/A, TYPE I
+ 74.00, 43.0' RT USFL = _____
+ 74.00, 53.0' RT DSFL = _____
1-METAL END SEC 12" (STD 542401)

LAST SAVED = 5/23/2013 10:40:35 AM
 PEN TABLE = 10-HALF (A4)
 PLOT DRIVER = TR-18pdf-Block-Half.plt

FILE NAME =	USER NAME = jepettibone	DESIGNED - JCN	REVISED -
1:\06103\cad\1\plans\012_0672789-Sht-Eng-Bus95.dgn		DRAWN - JJB	REVISED -
		CHECKED - VJM	REVISED -
PLOT SCALE = 40.0000' / IN.		DATE - 08/2007	REVISED -

**STATE OF ILLINOIS
DEPARTMENT OF TRANSPORTATION**

STORMWATER POLLUTION PREVENTION PLAN			
SCALE: 1" = 20'	SHEET NO. 10 OF 15 SHEETS	STA. 102+00	TO STA. 108+00

F.A.U. RTE.	SECTION	COUNTY	TOTAL SHEETS	SHEET NO.
7706	23(B-1)	LOGAN	179	62
BUS. LOOP 55 OVER SALT CREEK			CONTRACT NO. 72789	
FED. ROAD DIST. NO.		ILLINOIS FED. AID PROJECT		

SLOPE GRADING AND RIP-RAP PLACEMENT ALONG THE POND SHALL BE PERFORMED AT PROJECT STARTUP PER ILCS 15-1-3. EROSION BARRIER SHALL ALSO BE PLACED AT THE POND.