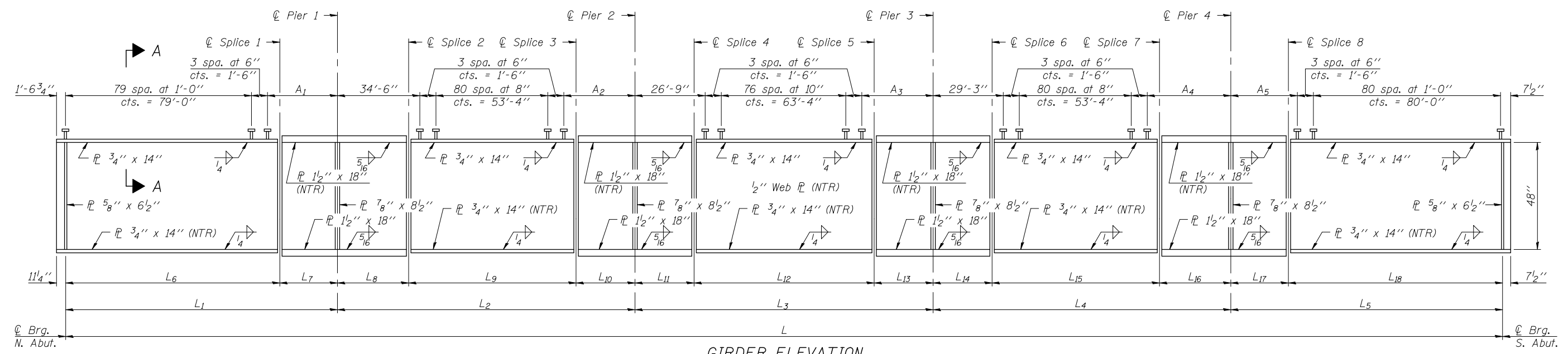
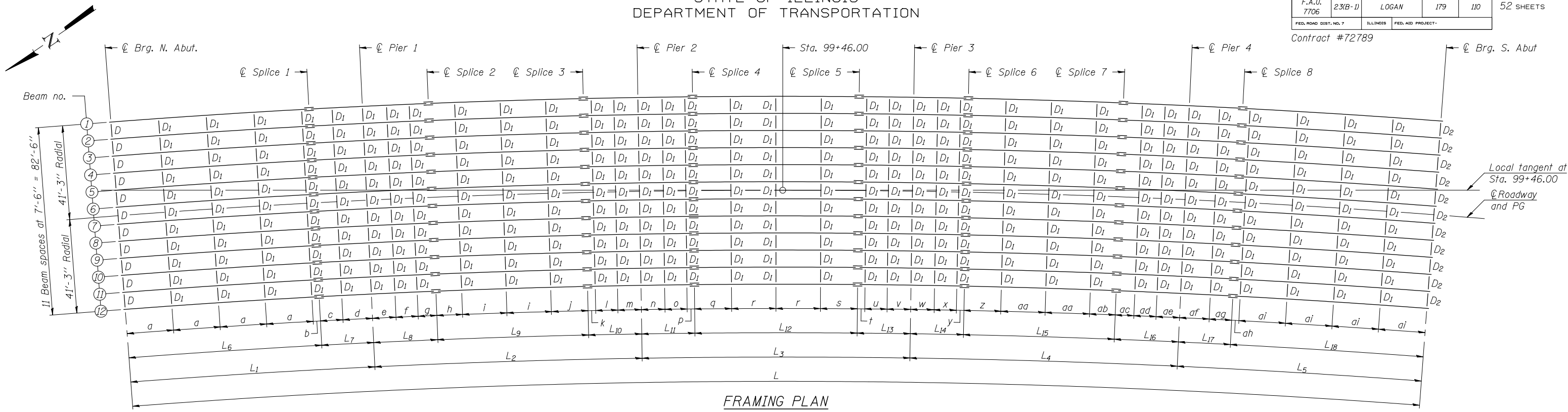


STATE OF ILLINOIS
DEPARTMENT OF TRANSPORTATION

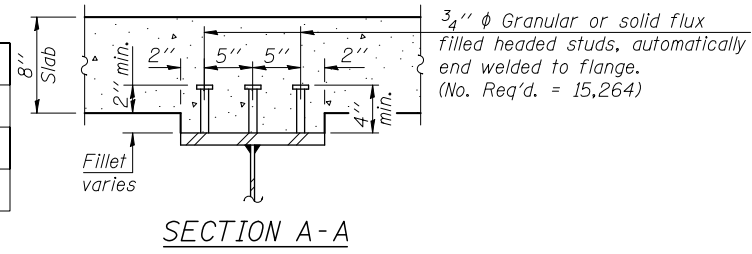
ROUTE NO. F.A.U. 7706	SECTION 23(B-1)	COUNTY LOGAN	TOTAL SHEETS 179	SHEET NO. 110	SHEET NO. 26 52 SHEETS
FED. ROAD DIST. NO. 7		ILLINOIS		FED. AID PROJECT-	

Contract #72789



"NTR" denotes plates to which notch toughness requirements are applicable.

- Notes:
- All flanges, web plates, connection plates, bearing stiffeners, and diaphragms shall be AASHTO M270 Grade 50W.
 - All cross frames or diaphragms between beams or girders shall be installed with erection pins and bolts in accordance with the erection plan approved by the Engineer. Individual cross frames or diaphragms at supports may be temporarily disconnected to install bearing anchor rods.
 - Load carrying components designated "NTR" shall conform to the Supplemental Requirements for Notch Toughness, Zone 2.
 - For table of "L" dimensions and table of offset dimensions, see sheet 27 of 52.
 - For table of a thru ai dimensions, see sheet 28 of 52.
 - For table of A₁ thru A₅ dimensions, see sheet 27 of 52.



DESIGNED	JJD
CHECKED	EML
DRAWN	JJD
CHECKED	EML



STRUCTURAL STEEL
F.A.U. ROUTE 7706 - SECTION 23(B-1)
LOGAN COUNTY
STATION 99+46.00
STRUCTURE NO. 054-0512