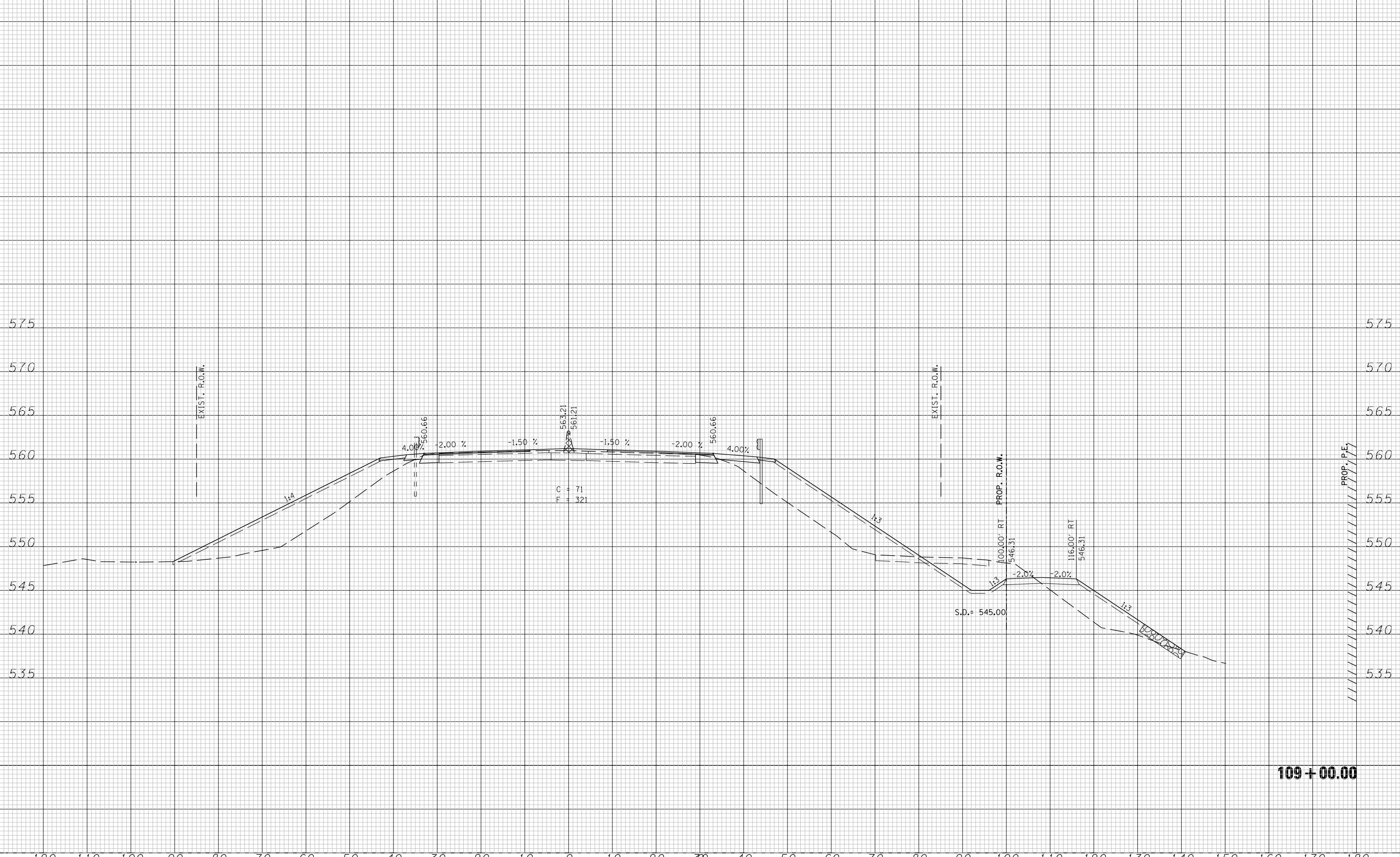


150 140 130 120 110 100 90 80 70 60 50 40 30 20 10 0 10 20 30 40 50 60 70 80 90 100 110 120 130 140 150

DATE	
BY	
FINISHED SURVEY	
PLOTTED TEMPLATE	
NOTE BOOK NO.	
AREAS CHECKED	

DATE	
BY	
ORIGINAL SURVEY	
PLOTTED TEMPLATE	
NOTE BOOK NO.	
AREAS CHECKED	



109 + 00.00

LAST SAVED = 5/23/2013
 PEN TABLE = 10-Half-103
 PLOT DRIVER = prt3pdt-Black-Half.plt

FILE NAME =	USER NAME = jepettibone
h:\06103\cad\1\plans\097_0672789-Sht-XSht-Bus55.dgn	DESIGNED -
	DRAWN -
	CHECKED -
PLOT DATE = 5/23/2013 10:41:22 AM	DATE -

REVISIED -
REVISIED -
REVISIED -
REVISIED -

**STATE OF ILLINOIS
 DEPARTMENT OF TRANSPORTATION**

CROSS SECTIONS - BUSINESS LOOP 55

SCALE: 1"=10'H 5'V SHEET NO. 24 OF 33 SHEETS STA. 109+00.00 TO STA. 109+00.00

F.A.U. RTE.	SECTION	COUNTY	TOTAL SHEETS	SHEET NO.
7706	23(B-1)	LOGAN	179	168
BUS. LOOP 55 OVER SALT CREEK		CONTRACT NO. 72789		
FED. ROAD DIST. NO.	ILLINOIS	FED. AID PROJECT		