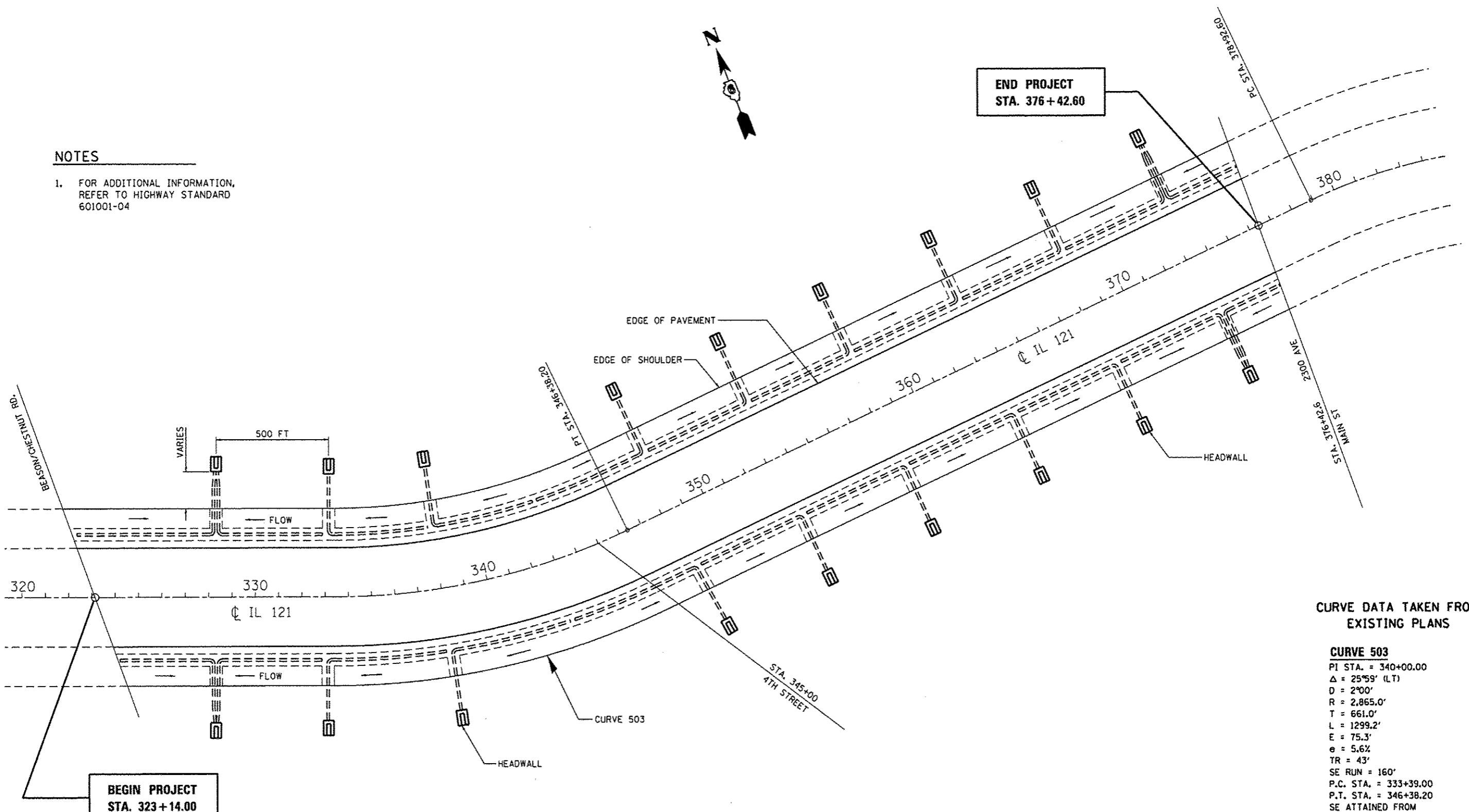


NOTES

- FOR ADDITIONAL INFORMATION, REFER TO HIGHWAY STANDARD 601001-04



CURVE DATA TAKEN FROM EXISTING PLANS

CURVE 503
 P.I. STA. = 340+00.00
 $\Delta = 25^{\circ}59'$ (LT)
 $D = 2^{\circ}00'$
 $R = 2,865.0'$
 $T = 661.0'$
 $L = 1299.2'$
 $E = 75.3'$
 $e = 5.6\%$
 $TR = 43'$
 $SE RUN = 160'$
 P.C. STA. = 333+39.00
 P.T. STA. = 346+38.20
 SE ATTAINED FROM STA. 331+89 TO STA. 333+92
 SE REMOVED FROM STA. 345+85 TO STA. 347+88

FILE NAME *	USER NAME * shahdm	DESIGNED -	REVISED -
c:\pwork\pwork\shahdm\d8341385\06xxx\shahdm-plan.dgn		DRAWN - DMS	REVISED -
Default	PLOT SCALE = 48.0000' / in.	CHECKED -	REVISED -
	PLOT DATE = Mar-27-2013 09:56:08AM	DATE -	REVISED -

**STATE OF ILLINOIS
DEPARTMENT OF TRANSPORTATION**

PLAN VIEW - SUB-SURFACE DRAINS

SCALE: _____ SHEET _____ OF _____ SHEETS STA. _____ TO STA. _____

F.A.P. RTE.	SECTION	COUNTY	TOTAL SHEETS	SHEET NO.
320	(134) I-2	LOGAN	8	5
CONTRACT NO. 72G13				
ILLINOIS FED. AID PROJECT				