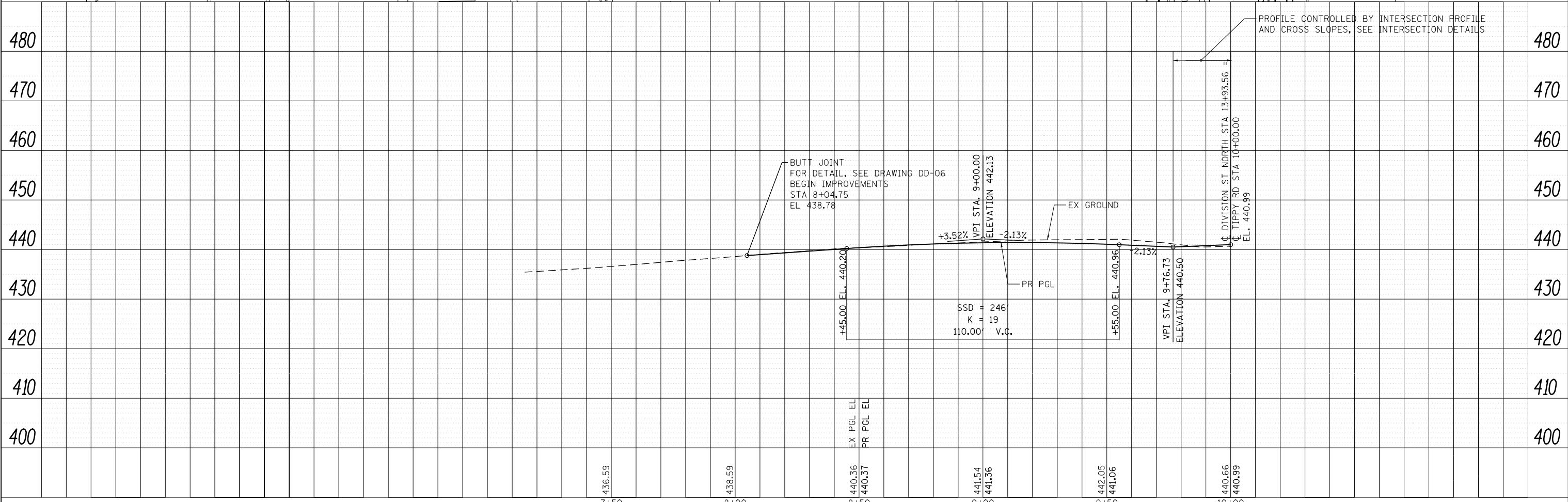
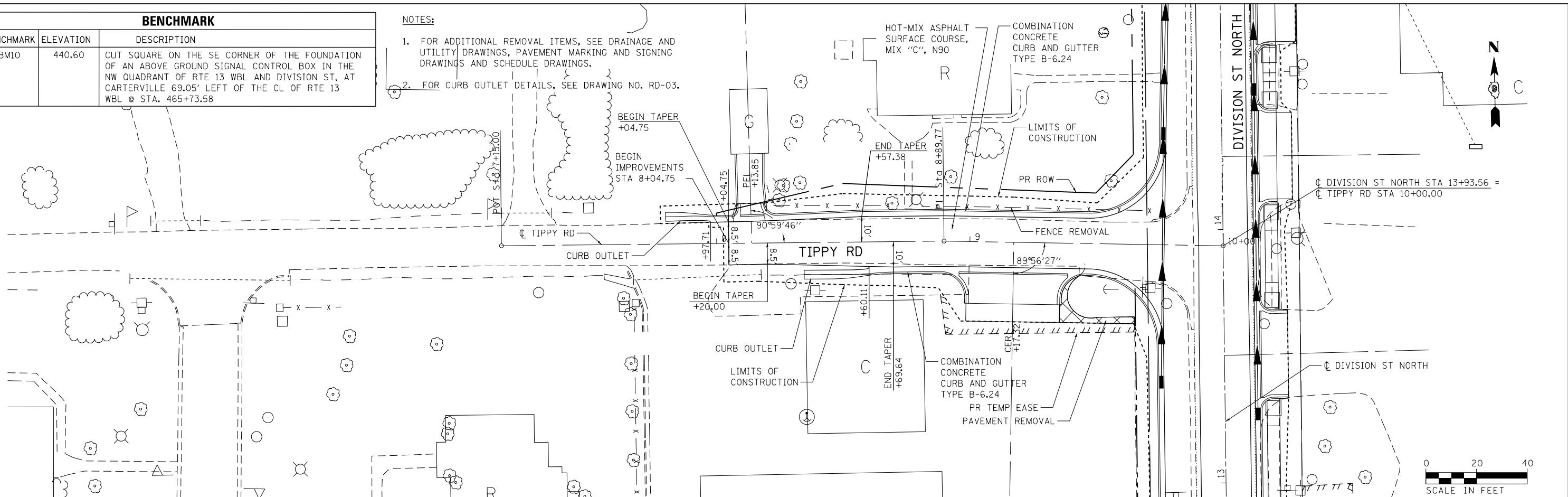


BENCHMARK		
BENCHMARK	ELEVATION	DESCRIPTION
BM10	440.60	CUT SQUARE ON THE SE CORNER OF THE FOUNDATION OF AN ABOVE GROUND SIGNAL CONTROL BOX IN THE NW QUADRANT OF RTE 13 WBL AND DIVISION ST, AT CARTERVILLE 69.05' LEFT OF THE CL OF RTE 13 WBL @ STA. 465+73.58

- NOTES:
- FOR ADDITIONAL REMOVAL ITEMS, SEE DRAINAGE AND UTILITY DRAWINGS, PAVEMENT MARKING AND SIGNING DRAWINGS AND SCHEDULE DRAWINGS.
 - FOR CURB OUTLET DETAILS, SEE DRAWING NO. RD-03.

DATE	
BY	
PLAN	
NO.	
NO.	
NO.	
NO.	
NO.	

DATE	
BY	
PROFILE	
NO.	
NO.	
NO.	
NO.	
NO.	



FILE NAME = D:\978258-shr-plnprf-21.dgn	USER NAME = mfox	DESIGNED - KN	REVISED -	STATE OF ILLINOIS DEPARTMENT OF TRANSPORTATION	ROADWAY PLAN AND PROFILE TIPPY ROAD	F.A.P. RTE. 331	SECTION (1-41R-2, N-4, TS-4)	COUNTY WILLIAMSON	TOTAL SHEETS 381	SHEET NO. 117			
CH2MHILL	PLOT SCALE = 40.0000' / in.	DRAWN - AS	REVISED -			SCALE:	SHEET NO. 21 OF 32 SHEETS	STA. 8+04.75	TO STA. 10+00.00	DRAWING NO. PL-21 CONTRACT NO. 78258			
	PLOT DATE = 1/31/2013	CHECKED -	REVISED -			ILLINOIS FED. AID PROJECT							
		DATE -	REVISED -										