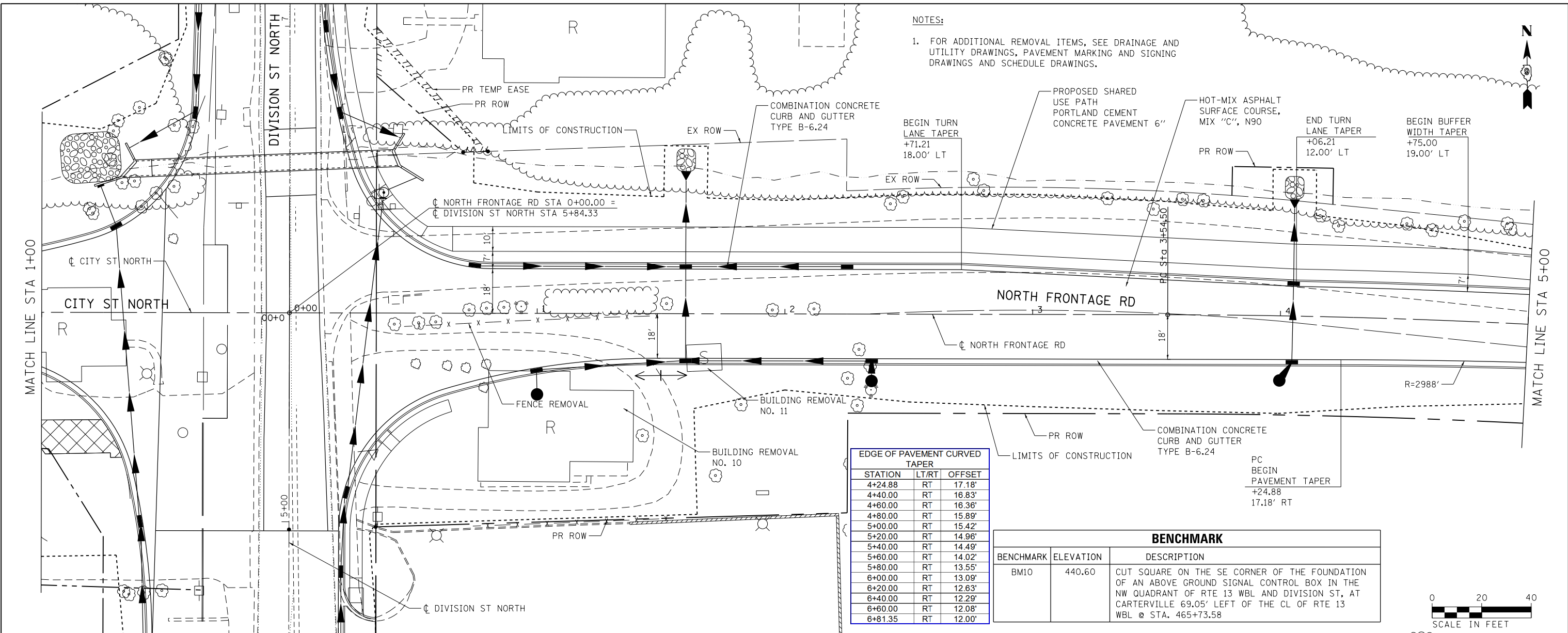


DATE	
BY	
PLAN	
SURVEYED	
PLOTTED	
ALIGNED	
CHECKED	
NO. _____	
NOTE BOOK	
NO. _____	
CADD FILE NAME	

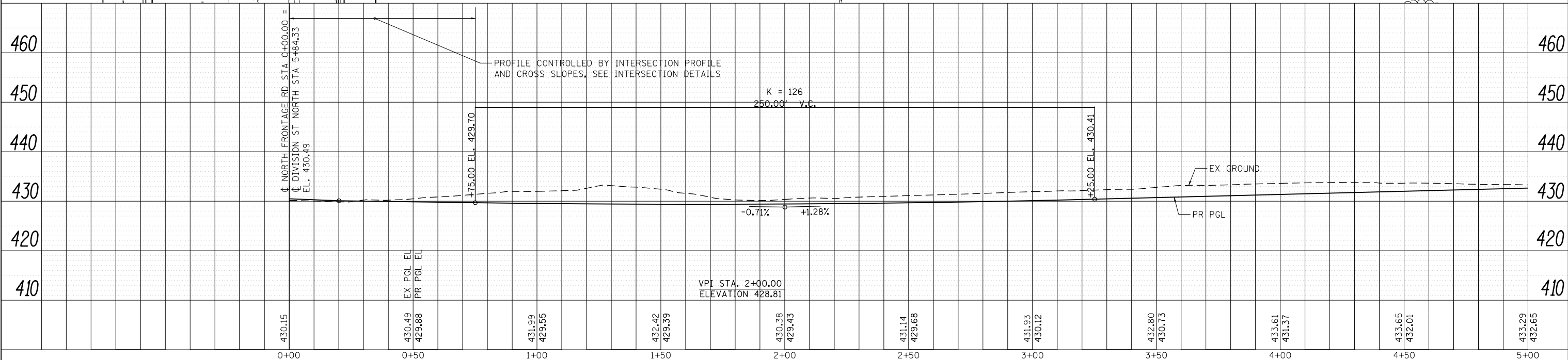
DATE	
BY	
PROFILE	
SURVEYED	
PLOTTED	
GRADES CHECKED	
NO. _____	
NOTE BOOK	
NO. _____	
STRUCTURE	
NOTATIONS CHECKED	



NOTES:
 1. FOR ADDITIONAL REMOVAL ITEMS, SEE DRAINAGE AND UTILITY DRAWINGS, PAVEMENT MARKING AND SIGNING DRAWINGS AND SCHEDULE DRAWINGS.

EDGE OF PAVEMENT CURVED TAPER		
STATION	LT/RT	OFFSET
4+24.88	RT	17.18'
4+40.00	RT	16.83'
4+60.00	RT	16.36'
4+80.00	RT	15.89'
5+00.00	RT	15.42'
5+20.00	RT	14.96'
5+40.00	RT	14.49'
5+60.00	RT	14.02'
5+80.00	RT	13.55'
6+00.00	RT	13.09'
6+20.00	RT	12.63'
6+40.00	RT	12.29'
6+60.00	RT	12.08'
6+81.35	RT	12.00'

BENCHMARK		
BENCHMARK	ELEVATION	DESCRIPTION
BM10	440.60	CUT SQUARE ON THE SE CORNER OF THE FOUNDATION OF AN ABOVE GROUND SIGNAL CONTROL BOX IN THE NW QUADRANT OF RTE 13 WBL AND DIVISION ST, AT CARTERVILLE 69.05' LEFT OF THE CL OF RTE 13 WBL @ STA. 465+73.58



FILE NAME = D978258-sh1-plnprf-23.dgn
CH2MHILL

USER NAME = mfox	DESIGNED - KN	REVISED -
	DRAWN - AS	REVISED -
	CHECKED -	REVISED -
	DATE -	REVISED -

**STATE OF ILLINOIS
 DEPARTMENT OF TRANSPORTATION**

**ROADWAY PLAN AND PROFILE
 NORTH FRONTAGE ROAD**

SCALE: SHEET NO. 23 OF 32 SHEETS STA. 0+00.00 TO STA. 5+00.00

F.A.P. RTE.	SECTION	COUNTY	TOTAL SHEETS	SHEET NO.
331	(1-4)R-2, N-4, TS-4	WILLIAMSON	381	119
DRAWING NO. PL-23		CONTRACT NO. 78258		
ILLINOIS FED. AID PROJECT				