

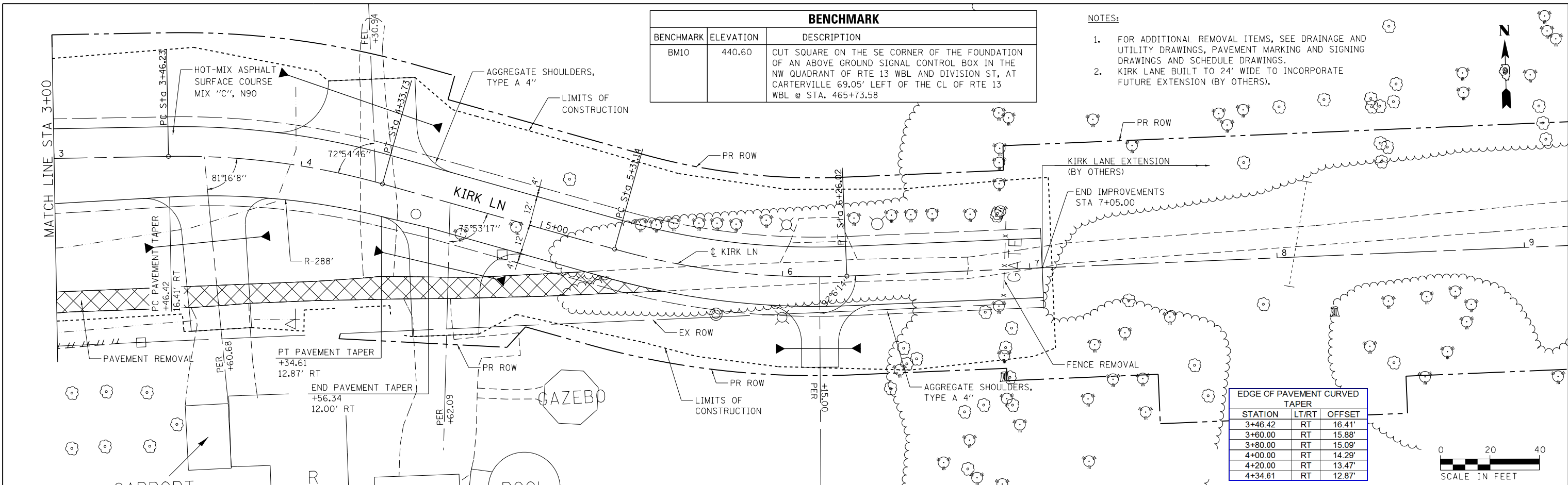
PLAN	SURVEYED	DATE
	PLOTTED	BY
	ALIGNED	
	CHECKED	
	FILED	
	NO.	

PROFILE	SURVEYED	DATE
	PLOTTED	BY
	GRADES	
	CHECKED	
	STRUCTURE	
	NOTATIONS	
	CHKD	
	NO.	

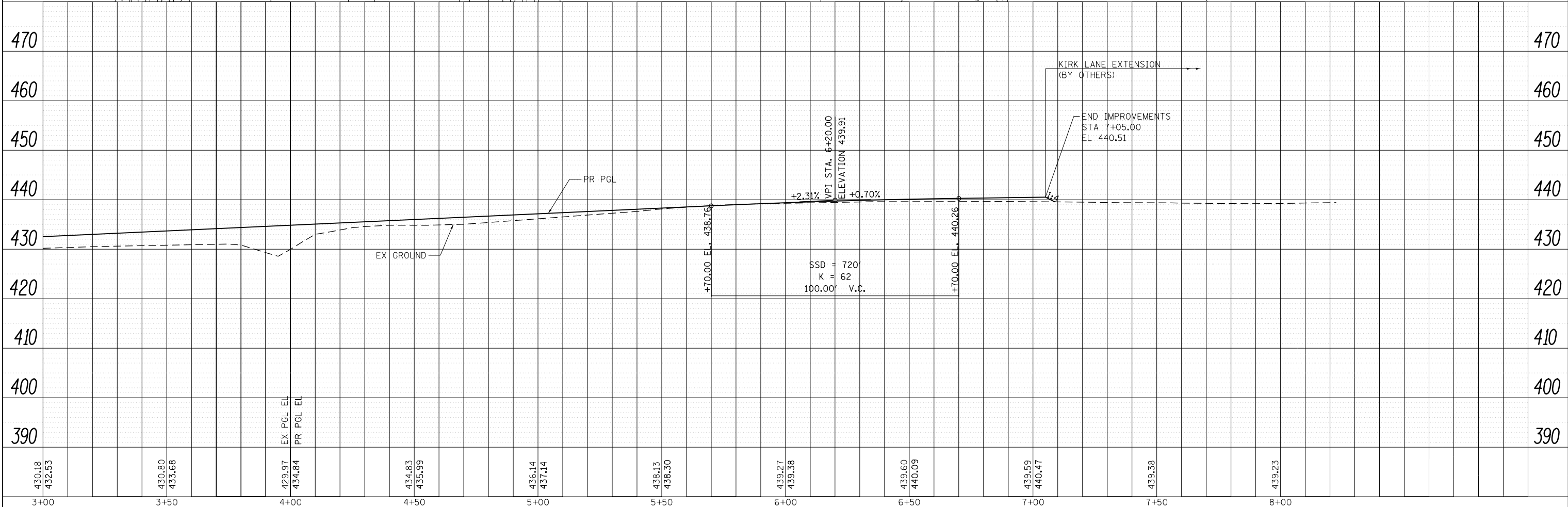
BENCHMARK		
BENCHMARK	ELEVATION	DESCRIPTION
BM10	440.60	CUT SQUARE ON THE SE CORNER OF THE FOUNDATION OF AN ABOVE GROUND SIGNAL CONTROL BOX IN THE NW QUADRANT OF RTE 13 WBL AND DIVISION ST, AT CARTERVILLE 69.05' LEFT OF THE CL OF RTE 13 WBL @ STA. 465+73.58

NOTES:

- FOR ADDITIONAL REMOVAL ITEMS, SEE DRAINAGE AND UTILITY DRAWINGS, PAVEMENT MARKING AND SIGNING DRAWINGS AND SCHEDULE DRAWINGS.
- KIRK LANE BUILT TO 24' WIDE TO INCORPORATE FUTURE EXTENSION (BY OTHERS).



EDGE OF PAVEMENT CURVED TAPER		
STATION	LT/RT	OFFSET
3+46.42	RT	16.41'
3+60.00	RT	15.88'
3+80.00	RT	15.09'
4+00.00	RT	14.29'
4+20.00	RT	13.47'
4+34.61	RT	12.87'



FILE NAME = D978258-sh1-plnprf-29.dgn
CH2MHILL

USER NAME = mfox	DESIGNED - KN	REVISED -
	DRAWN - AS	REVISED -
	CHECKED -	REVISED -
	DATE -	REVISED -

STATE OF ILLINOIS
DEPARTMENT OF TRANSPORTATION

ROADWAY PLAN AND PROFILE
KIRK LANE
 SCALE: SHEET NO. 29 OF 32 SHEETS STA. 3+00.00 TO STA. 7+05.00

F.A.P. RTE. 331	SECTION (1-4)R-2, N-4, TS-4	COUNTY WILLIAMSON	TOTAL SHEETS 381	SHEET NO. 125
DRAWING NO. PL-29			CONTRACT NO. 78258	
ILLINOIS FED. AID PROJECT				