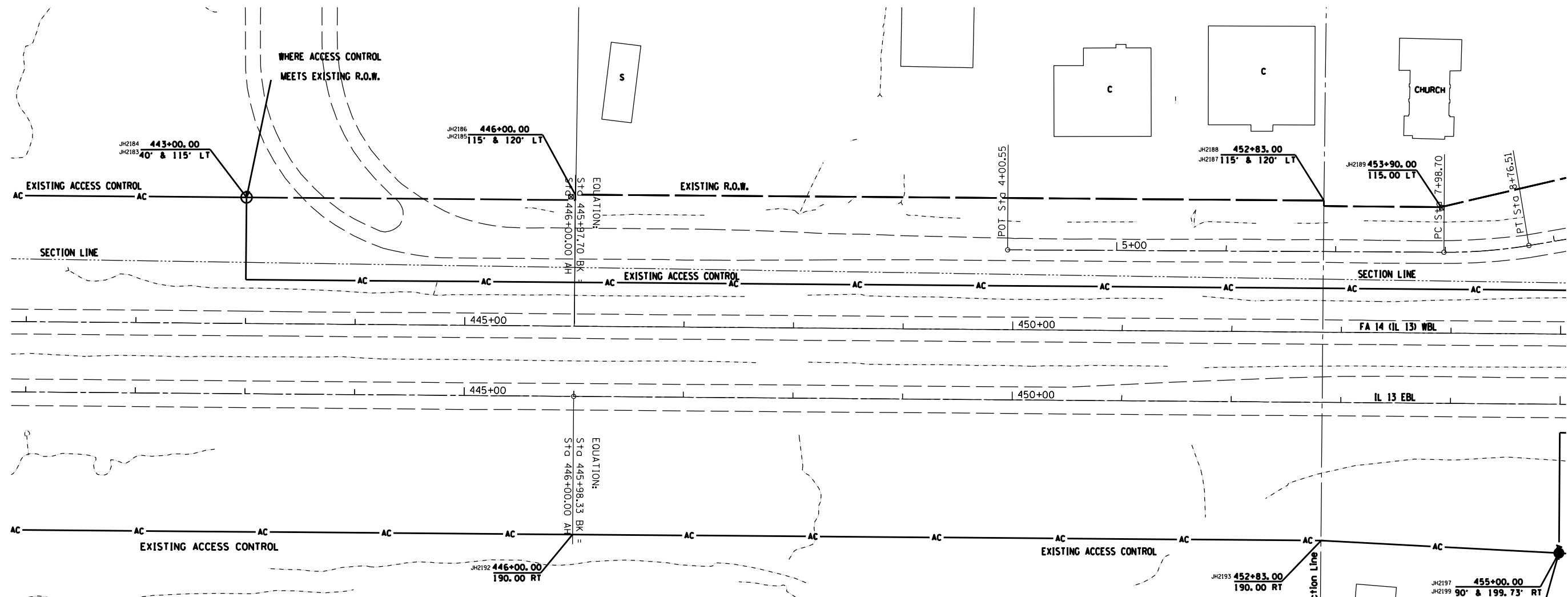


SW Quarter, SE Quarter
 Section 10
 T. 9 S., R. 1 E., 3rd PM

SE Quarter, SE Quarter
 Section 10
 T. 9 S., R. 1 E., 3rd PM



COORDINATE LIST

PT #	NORTHING	EASTING
JH2183	393, 666.59	766, 837.47
JH2184	393, 591.52	766, 836.85
JH2185	393, 669.12	767, 137.47
JH2186	393, 664.12	767, 137.43
JH2187	393, 663.65	767, 820.45
JH2188	393, 658.65	767, 820.41
JH2189	393, 657.79	767, 927.41
JH2192	393, 359.13	767, 134.99
JH2193	393, 353.66	767, 817.97
JH2197	393, 451.92	768, 035.77
JH2199	393, 342.20	768, 034.89

NW Quarter, NE Quarter
 Section 15
 T. 9 S., R. 1 E., 3rd PM

NE Quarter, NE Quarter
 Section 15
 T. 9 S., R. 1 E., 3rd PM