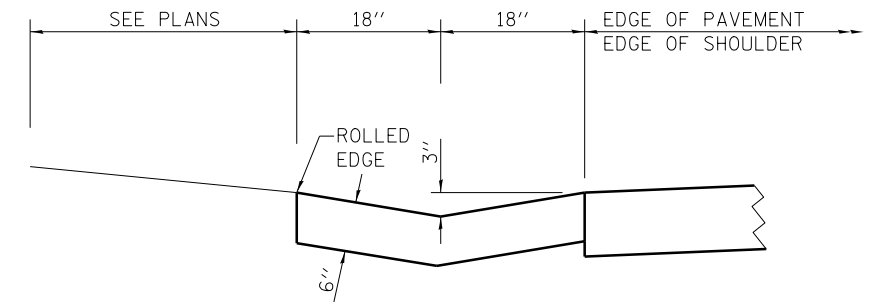


NO. 4 REBAR PLACED AT MID-DEPTH (ONE EACH SIDE OF CASTING)

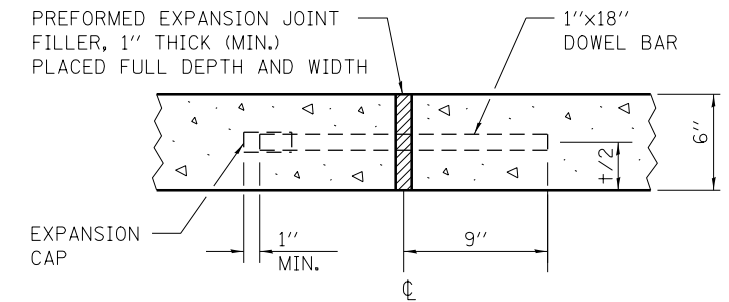
**PLAN**

ALIGNMENT	LOCATION			RT/LT
	STA	-	STA	
DIVISION ST SOUTH	12+43.43	-	16+91.90	RT
VENABLE DR	2+99.16	-	3+28.94	RT

**MODIFIED TYPE A GUTTER**



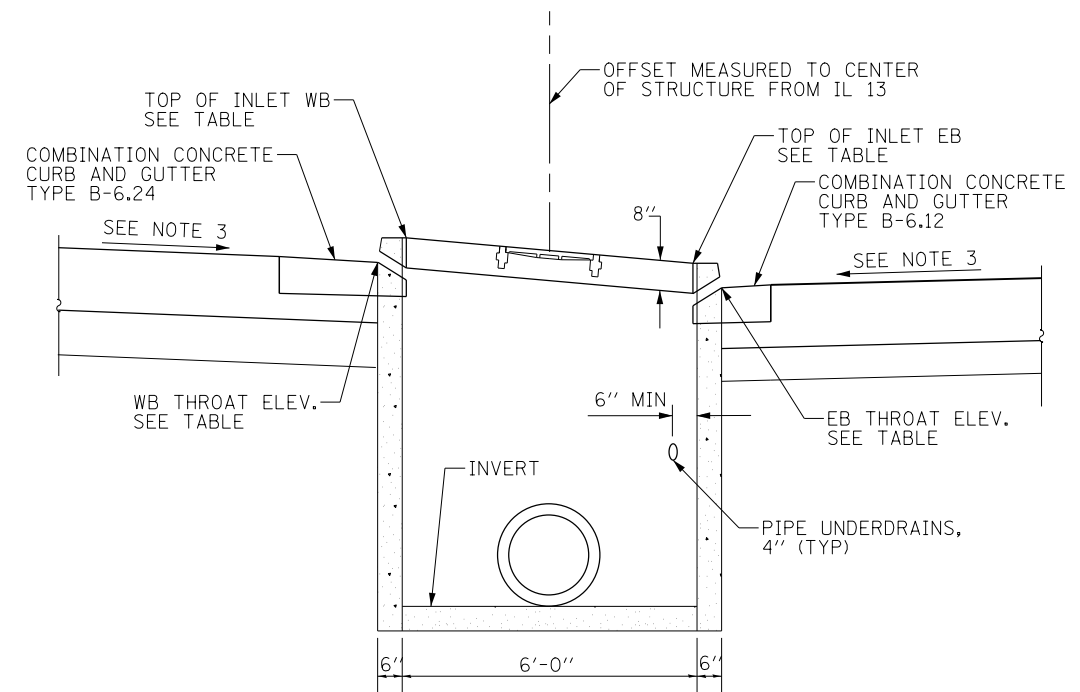
**SECTION A-A**



**EXPANSION JOINT**

**NOTES:**

- FOR REINFORCEMENT LAYOUT, ADDITIONAL DETAILS AND NOTES, SEE DISTRICT DETAIL 9-1.
- UNDERDRAIN OUTLET ELEVATION WILL VARY AT DIFFERENT INLETS SEE STD. 601001-04 FOR UNDERDRAIN DETAILS.
- FOR PAVEMENT LAYERS, CROSS SLOPE, AND CURB AND GUTTER TYPE, SEE PROPOSED TYPICAL SECTIONS.
- INLETS WILL BE PAID FOR AT THE CONTRACT UNIT PRICE EACH FOR INLETS, SPECIAL WHICH PRICE SHALL INCLUDE THE CAST IRON FRAME SPECIAL, TYPE 1 WITH TYPE 1 CLOSED LID, THE REINFORCEMENT BARS, METAL STEPS, AND JOINT FILLER.
- IL 13 EASTBOUND LANE CALLOUTS USE IL 13 WESTBOUND LANE ALIGNMENT FOR STATION/OFFSET.



**INLETS, SPECIAL**

(EB AND WB LANES ARE AT DIFFERENT ELEVATIONS)

STRUCTURE NUMBER	STRUCTURE	STA	OFFSET	TOP OF INLET		THROAT ELEV		INVERT			
				EB	WB	EB	WB	N	S	E	W
65	INLETS, SPECIAL	462+70	23.5' RT	433.90	434.40	433.19	433.69			426.88	426.75
71	INLETS, SPECIAL	465+13	23.5' RT	438.58	439.06	437.87	438.35				432.82
84	INLETS, SPECIAL	467+09	40.5' RT	441.68	441.38	440.97	440.67			437.20	437.03
90	INLETS, SPECIAL	469+25	40.5' RT	444.05	443.76	443.34	443.05				439.10