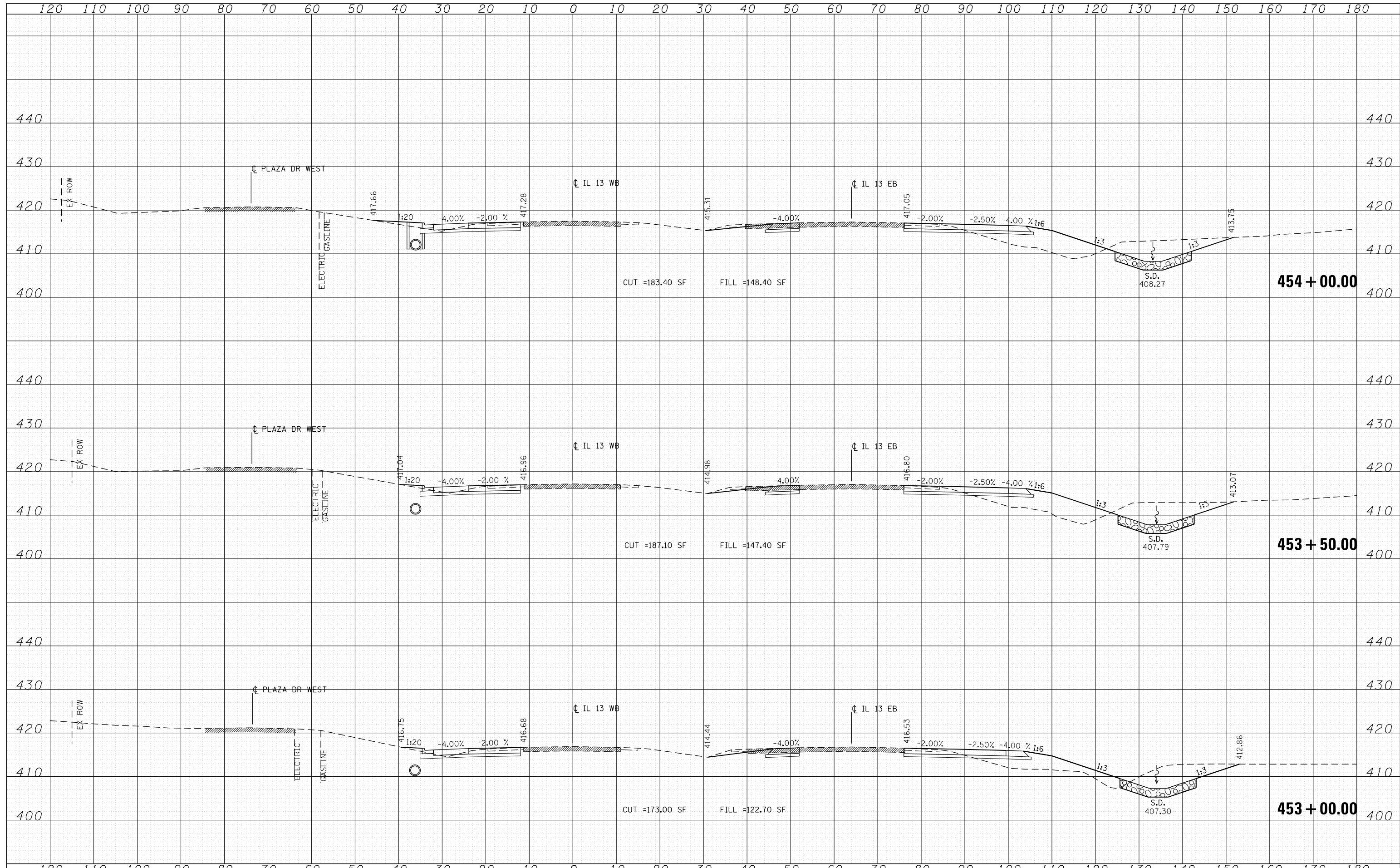


DATE	
BY	
FINISHED	
NO. OF SHEETS	
DATE	
BY	
FINISHED	
NO. OF SHEETS	
DATE	
BY	
FINISHED	
NO. OF SHEETS	

DATE	
BY	
FINISHED	
NO. OF SHEETS	
DATE	
BY	
FINISHED	
NO. OF SHEETS	
DATE	
BY	
FINISHED	
NO. OF SHEETS	



FILE NAME = D978258-sht-xssht-IL13.dgn
CH2MHILL

USER NAME = mfox	DESIGNED - KN	REVISED -
	DRAWN - AS	REVISED -
PLOT SCALE = 20.0000' / in.	CHECKED -	REVISED -
PLOT DATE = 1/31/2013	DATE -	REVISED -

**STATE OF ILLINOIS
DEPARTMENT OF TRANSPORTATION**

**PROPOSED CROSS SECTIONS
ILLINOIS ROUTE 13**

SCALE: SHEET NO. 11 OF 33 SHEETS STA. 453+00.00 TO STA. 454+00.00

F.A.P. RTE.	SECTION	COUNTY	TOTAL SHEETS	SHEET NO.
331	(1-4)R-2, N-4, TS-4	WILLIAMSON	381	279
DRAWING NO. XS-011			CONTRACT NO. 78258	
ILLINOIS FED. AID PROJECT				