

REVISION	DATE	DESCRIPTION
06/12/13		REMOVED PAPER/SASIS TO REMAIN

MACOMB MUNICIPAL AIRPORT
MACOMB, ILLINOIS

IL PROJ.: MOB-4206 BLOCK GRANT PROJ.: 3-17-0064-B21

Hanson Proj. No. 12A0053	01/13/13
Filename: E-604-SCM.dwg	KNL
Scale: AS SHOWN	TRR
Date: 06/17/13	02/04/13
	REVIEWED

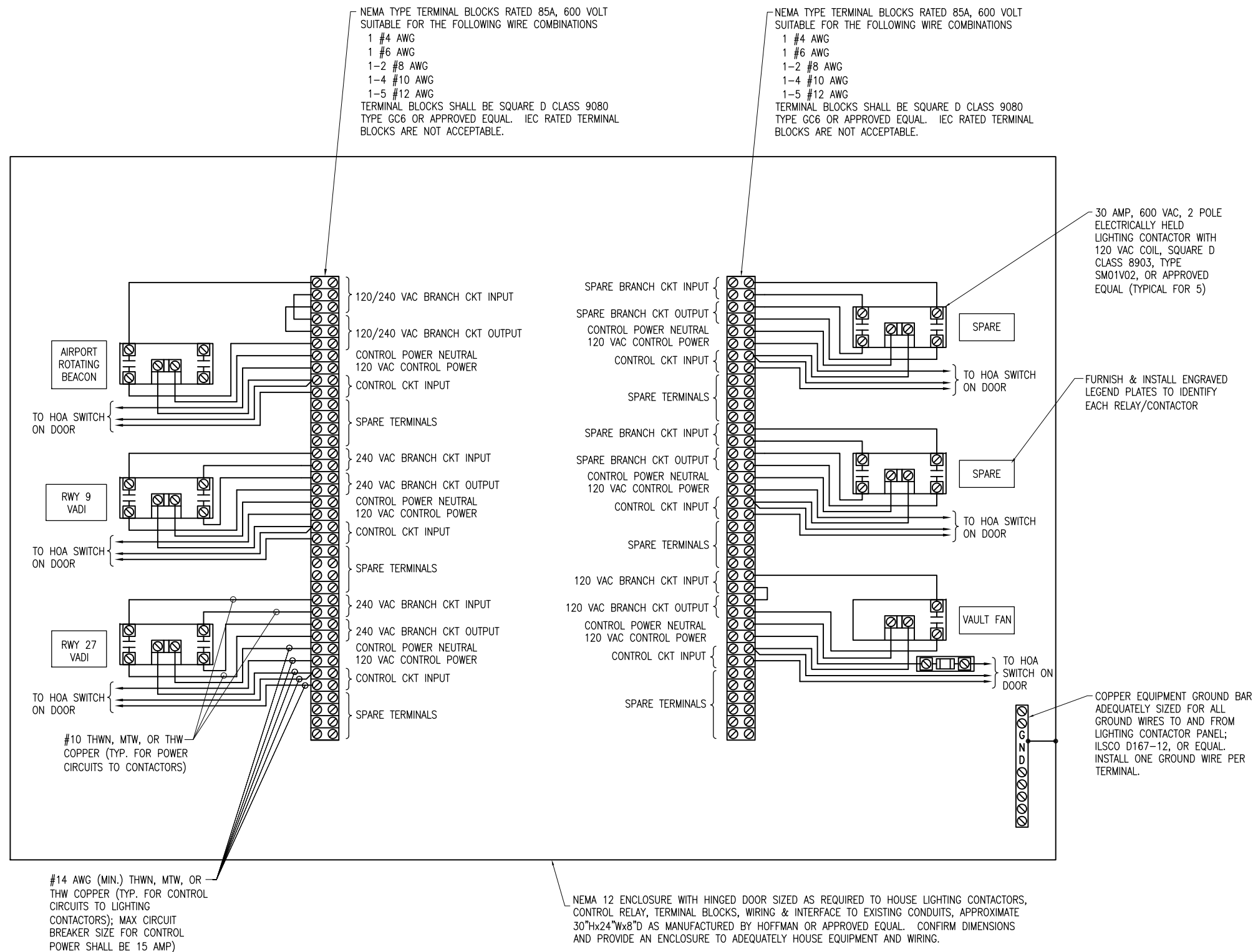


REPLACE VAULT, AIRFIELD LIGHTING AND GUIDANCE SIGNS

LIGHTING CONTACTOR PANEL DETAIL

NOTES

- 15 AMP & 20 AMP INPUT POWER/BRANCH CIRCUITS SHALL BE #10 AWG COPPER THWN FROM THE RESPECTIVE POWER SOURCE TO THE LIGHTING CONTACTOR PANEL. 30 AMP INPUT POWER/BRANCH CIRCUITS SHALL BE #8 AWG COPPER THWN (MIN.) FROM THE RESPECTIVE POWER SOURCE TO THE LIGHTING CONTACTOR PANEL.
- INPUT CONTROL CIRCUITS SHALL BE #12 AWG COPPER THWN.
- FOR 120 VAC BRANCH CIRCUITS THE NEUTRAL CONDUCTOR SHALL NOT BE SWITCHED THROUGH THE RELAY CONTACTS. USE TERMINAL BLOCKS TO TRANSITION FROM VAULT BRANCH CIRCUIT WIRING TO FIELD WIRING.
- THE AIRPORT ROTATING BEACON CIRCUIT SHALL HAVE PHASE "A" SWITCHED THROUGH THE LIGHTING CONTACTOR. PHASE "B" SHALL BE UNSWITCHED FROM THE POWER SOURCE TO THE LOAD CENTER AT THE AIRPORT ROTATING BEACON.
- PROVIDE #10 AWG COPPER BONDING JUMPER FROM PANEL ENCLOSURE FRAME TO ENCLOSURE DOOR.
- PROVIDE 3-POSITION MAINTAINED CONTACT "HAND-OFF-AUTO" SELECTOR SWITCH FOR EACH LIGHTING CONTACTOR & MOUNT ON LIGHTING CONTACTOR PANEL ENCLOSURE DOOR. SELECTOR SWITCH SHALL BE SQUARE D CLASS 9001, TYPE KS43FBH13, OR APPROVED EQUAL. INCLUDE LEGEND PLATE TO IDENTIFY THE DEVICE CONTROLLED (EX: "RWY 9 VADI" OR "AIRPORT ROTATING BEACON").
- SEE "LIGHTING CONTACTOR SCHEMATIC" AND "EXHAUST FAN CONTROL SCHEMATIC" FOR ADDITIONAL INFORMATION ON WIRING.
- FUSING FOR FAN CIRCUIT CONTROL WIRING SHALL BE 10 AMP, 600 VAC, BUSSMANN CATALOG FNQ-R-10, OR APPROVED EQUAL, WITH FUSE BLOCKS, WITH BOX LUG TERMINALS, SIZED AS REQUIRED FOR THE RESPECTIVE APPLICATION. INCLUDE HARDWARE FOR MOUNTING. PROVIDE ONE BOX (5 MINIMUM QUANTITY) OF EACH TYPE AND SIZE OF FUSE, UPON COMPLETION OF THE JOB FOR USE AS SPARES.
- INCLUDE LEGEND PLATE ON CONTROL PANEL ENCLOSURE OUTER DOOR LABELED "NOTICE: CONTACTORS HAVE REMOTE LOCATED CONTROLS AND MAY ACTIVATE AT ANY TIME".
- 120/240 VAC PHASE "A" CONDUCTORS SHALL HAVE BLACK COLORED INSULATION. 120/240 VAC PHASE "B" CONDUCTORS SHALL HAVE RED COLORED INSULATION. NEUTRAL CONDUCTORS SHALL HAVE WHITE COLORED INSULATION. INSULATED EQUIPMENT GROUND WIRES SHALL HAVE GREEN COLORED INSULATION.
- CONTROL PANEL FOR AIRFIELD NAVAIDS & VAULT FAN SHALL BE MANUFACTURED BY A UL 508 INDUSTRIAL CONTROL PANEL BUILDER OR AN FAA APPROVED L-821 PANEL BUILDER, AND SHALL BE MANUFACTURED IN THE UNITED STATES TO COMPLY WITH THE AIRPORT IMPROVEMENT PROGRAM BUY AMERICAN PREFERENCES REQUIREMENT. WHERE THE PANEL IS MANUFACTURED BY AN L-821 PANEL BUILDER IT SHALL BE LABELED AS AN L-821 PANEL.
- CONTROL PANEL FOR AIRFIELD NAVAIDS & VAULT FAN SHALL BE SEPARATE FROM THE RELAY INTERFACE CONTROL PANEL.



CONTROL PANEL FOR AIRFIELD NAVAIDS