

024

FA R T E	SECTION	COUNTY	TOTAL SHEETS	SHEET NO.
VAR	D7 BRIDGE REPAIRS 2020-3		14	1
ILLINOIS			CONTRACT NO. 74918	
CLARK, FAYETTE, & MACON				

X

STATE OF ILLINOIS  
DEPARTMENT OF TRANSPORTATION

**PROPOSED  
HIGHWAY PLANS**

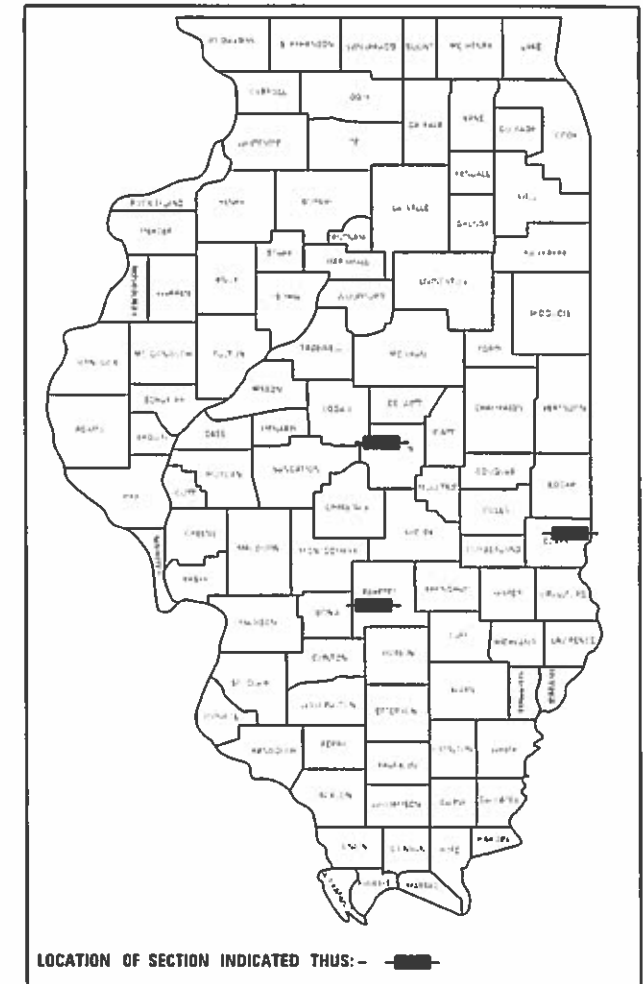
FAI 70 (I 70) & FAP 320 (IL 121)  
SECTION D7 BRIDGE REPAIRS 2020-3

PARAPET REPAIRS  
VARIOUS COUNTIES

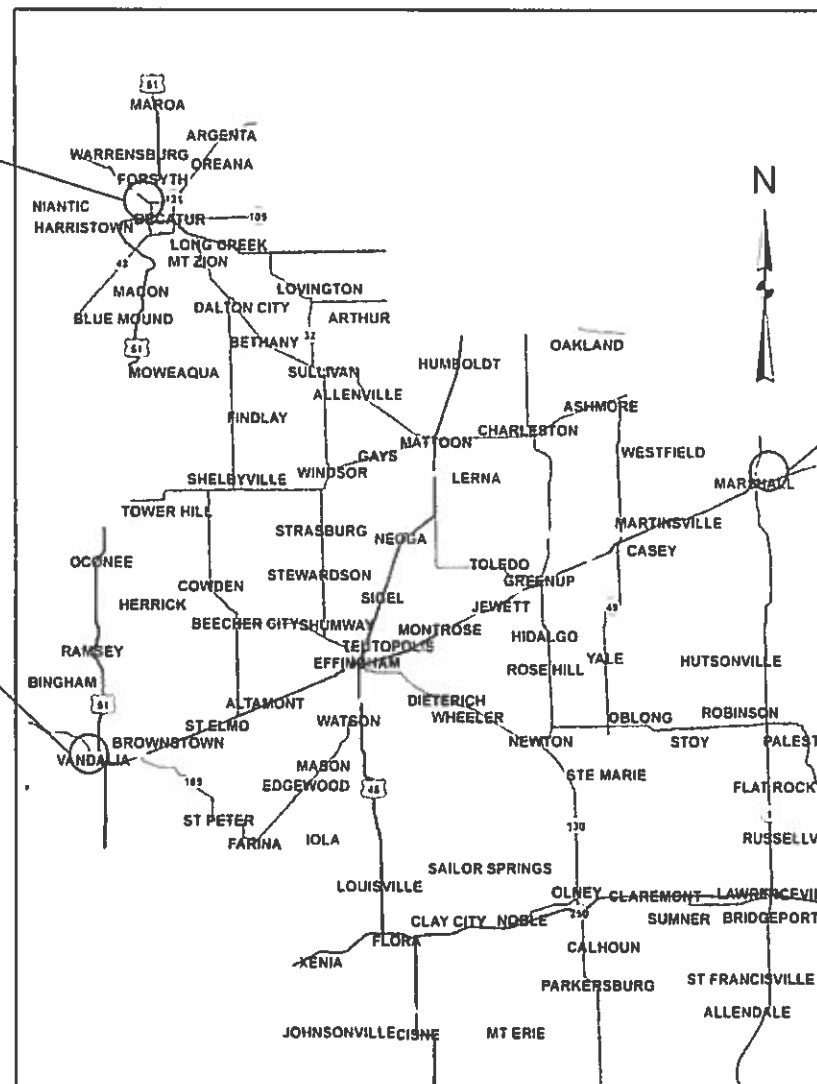
C-97-073-19

D-97-035-19

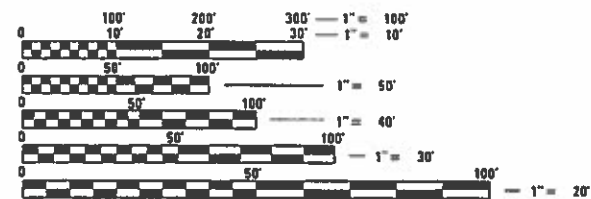
FOR INDEX OF SHEETS, SEE SHEET NO. 2



SN 058-0111



SN 026-0019



FULL SIZE PLANS HAVE BEEN PREPARED USING STANDARD ENGINEERING SCALES. REDUCED SIZED PLANS WILL NOT CONFORM TO STANDARD SCALES. IN MAKING MEASUREMENTS ON REDUCED PLANS, THE ABOVE SCALES MAY BE USED.

J.U.L.I.E.  
JOINT UTILITY LOCATION INFORMATION FOR EXCAVATORS  
1-800-892-0123  
OR 811

PROJECT ENGINEER BRIAN LEWIS  
PROJECT MANAGER TRAVIS WALK

CONTRACT NO. 74918

STATE OF ILLINOIS  
DEPARTMENT OF TRANSPORTATION

SUBMITTED May 13 20 19  
Jeffery M. Smith  
REGIONAL ENGINEER

June 28 20 19  
E.A. Elk  
ENGINEER OF DESIGN AND ENVIRONMENT

June 28 20 19  
Paul R. Chaf  
DIRECTOR OF HIGHWAYS PROJECT IMPLEMENTATION

PRINTED BY THE AUTHORITY  
OF THE STATE OF ILLINOIS

INDEX OF SHEETS

SHEET NO.	ITEM
1	COVER SHEET
2	INDEX OF SHEETS, HIGHWAY STANDARDS AND GENERAL NOTES
2	SCHEDULE OF QUANTITIES
3	SUMMARY OF QUANTITIES
4-6	LOCATION MAPS
7-14	STRUCTURE PLANS

THE FOLLOWING STANDARDS ARE A PART OF THESE PLANS AND ARE INCLUDED FOLLOWING THE LAST NUMBERED SHEET OF THE PLANS

STD. NO.	DESCRIPTION
000001-07	STANDARD SYMBOLS, ABBREVIATIONS, AND PATTERNS
001001-02	AREAS OF REINFORCEMENT BARS
001006	DECIMAL OF AN INCH AND OF A FOOT
631031-15	TRAFFIC BARRIER TERMINAL, TYPE 6
701101-05	OFF-ROAD OPERATIONS, MULTILANE, 15' TO 24" FROM PAVEMENT EDGE
701106-02	OFF-ROAD OPERATIONS, MULTILANE, MORE THAN 15' AWAY
701400-09	APPROACH TO LANE CLOSURE, FREEWAY/EXPRESSWAY
701402-12	LANE CLOSURE, FREEWAY/EXPRESSWAY, WITH BARRIER
701601-09	URBAN LANE CLOSURE, MULTILANE, 1W OR 2W, WITH NONTRAVERSABLE MEDIAN
701801-06	LANE CLOSURE, MULTILANE, 1W OR 2W, CROSSWALK OR SIDEWALK CLOSURE
701901-08	TRAFFIC CONTROL DEVICES
704001-08	TEMPORARY CONCRETE BARRIER

DESCRIPTION	STATION	TO	STATION	TEMPORARY CONCRETE BARRIER	IMPACT ATTENUATORS, TEMPORARY (NON-DIRECTIVE), TEST LEVEL 3
				(FOOT)	
FAYETTE COUNTY I-70					
SN 026-0019	610+50	TO	613+00	250	1
CLARK COUNTY I-70					
SN 012-0007	213+40	TO	215+77.50	237.5	1
TOTAL				487.5	2

GENERAL NOTES

THIS SECTION SHALL BE CONSTRUCTED IN ACCORDANCE WITH THE PLANS; THE "STANDARD SPECIFICATIONS FOR ROAD AND BRIDGE CONSTRUCTION" ADOPTED APRIL 1, 2016; AND THE SPECIAL PROVISIONS INCLUDED IN THE PROPOSAL.

THIS PROJECT IS LOCATED IN CLARK, FAYETTE, AND MACON COUNTIES. STRUCTURE NUMBER 012-0007 IS IN CLARK COUNTY ON FAI 70 APPROXIMATELY 1.7 MILES EAST OF THE IL ROUTE 1 INTERCHANGE. STRUCTURE NUMBER 026-0019 IS IN FAYETTE COUNTY ON FAI 70 APPROXIMATELY 0.7 MILES EAST OF THE US ROUTE 51 INTERCHANGE. STRUCTURE NUMBER 058-0111 IS IN MACON COUNTY ON FAP 320 (IL 121) APPROXIMATELY 1.5 MILES SOUTHEAST OF THE FAI 72 INTERCHANGE. THE WORK INCLUDED IN SECTION D-7 BRIDGE REPAIRS 2020-3 CONSISTS OF PARAPET REPAIRS, TRAFFIC CONTROL, AND ANY OTHER WORK NECESSARY TO COMPLETE THE SECTION.

AN ADDITIONAL QUANTITY OF PAVEMENT MARKING BLACKOUT TAPE, 7" IS INCLUDED FOR COVERING REFLECTIVE PAVEMENT MARKERS.

A QUANTITY OF GUARDRAIL REMOVAL IS INCLUDED FOR THE REMOVAL OF THE DAMAGED TYPE 6 TRAFFIC BARRIER TERMINAL.

DESCRIPTION	STATION	TO	STATION	PAVEMENT MARKING BLACKOUT TAPE, 7"
				(FOOT)
FAYETTE COUNTY I-70				
SN 026-0019	595+12	TO	613+00	492
CLARK COUNTY I-70				
SN 012-0007	197+77	TO	215+78	496
MACON COUNTY IL-121				
SN 058-0111	981+00	TO	997+60	457
TOTAL				1445

\* CLARK, FAYETTE, & MACON

MODEL: Default  
 FILE: h:\m\c\pub\planroom\dat\illinois.gov\PIWDOT\Documents\DOT\_Offices\District 7\Projects\74919\CADD\DATA\CAD\sheet\074919-18-schedule.index & schedule.dgn

USER NAME = steffenmk	DESIGNED -	REVISED -
	DRAWN -	REVISED -
PLOT SCALE = 100.0000' / in.	CHECKED -	REVISED -
PLOT DATE = 5/16/2019	DATE -	REVISED -

STATE OF ILLINOIS  
DEPARTMENT OF TRANSPORTATION

GENERAL NOTES, INDEX OF SHEETS,  
& SCHEDULE OF QUANTITIES

SCALE: SHEET 1 OF 1 SHEETS STA. TO STA.

F.A. RTE.	SECTION	COUNTY	TOTAL SHEETS	SHEET NO.
VAR.	D7 BRIDGE REPAIRS 2020-3	*	14	2
			CONTRACT NO. 74918	
		ILLINOIS	FED. AID PROJECT	

100%  
STATE

100%  
STATE

SUMMARY OF QUANTITIES			TOTAL QUANTITIES	CONSTRUCTION TYPE CODE		
CODE NO	ITEM	UNIT		CLARK 0013	FAYETTE 0013	MACON 0013
50102400	CONCRETE REMOVAL	CU YD	2.3	0.5	1.5	0.3
50300255	CONCRETE SUPERSTRUCTURE	CU YD	2.3	0.5	1.5	0.3
50300300	PROTECTIVE COAT	SQ YD	15.8	3.5	9.3	3.0
50800205	REINFORCEMENT BARS, EPOXY COATED	POUND	365	50	290	25
50800530	MECHANICAL SPLICERS	EACH	20		20	
* 63100085	TRAFFIC BARRIER TERMINAL, TYPE 6	EACH	1	1		
63200310	GUARDRAIL REMOVAL	FOOT	38	38		
67100100	MOBILIZATION	L SUM	1	0.33	0.33	0.34
70100207	TRAFFIC CONTROL AND PROTECTION, STANDARD	EACH	2	1	1	
	701402					
70102630	TRAFFIC CONTROL AND PROTECTION, STANDARD	L SUM	1			1
	701601					
70102640	TRAFFIC CONTROL AND PROTECTION, STANDARD	L SUM	1			1
	701801					
70107007	PAVEMENT MARKING BLACKOUT TAPE, 7"	FOOT	1444	492	495	457
70107025	CHANGEABLE MESSAGE SIGN	CAL DA	42	14	14	14

SUMMARY OF QUANTITIES			TOTAL QUANTITIES	CONSTRUCTION TYPE CODE		
CODE NO	ITEM	UNIT		CLARK 0013	FAYETTE 0013	MACON 0013
70400100	TEMPORARY CONCRETE BARRIER	FOOT	487.5	237.5	250	
70600250	IMPACT ATTENUATORS, TEMPORARY (NON-REDIRECTIVE), TEST LEVEL 3	EACH	2	1	1	
* X6330900	VERTICAL ADJUSTMENT OF GUARDRAIL	FOOT	25	25		
Z0012754	STRUCTURAL REPAIR OF CONCRETE (DEPTH EQUAL TO OR LESS THAN 5 INCHES)	SQ FT	10	3		7

\* SPECIALTY ITEM

\* CLARK, FAYETTE, & MACON

MODEL: Default  
FILE: \\nas01c.psu.edu\baronson.d\allink\poc\RWIDOT\Documents\DOT\_Offices\Bartlett\_7\Projects\74918\CAD\Drawings\CAD\Drawings\74918-STS-500.dgn

USER NAME = steffenmk	DESIGNED -	REVISED -
	DRAWN -	REVISED -
PLOT SCALE = 100.0000' / in.	CHECKED -	REVISED -
PLOT DATE = 5/14/2019	DATE -	REVISED -

STATE OF ILLINOIS  
DEPARTMENT OF TRANSPORTATION

SUMMARY OF QUANTITIES

SCALE: SHEET OF SHEETS STA. TO STA.

F.A. RTE.	SECTION	COUNTY	TOTAL SHEETS	SHEET NO.
VAR	D7 BRIDGE REPAIRS 2020-3	*	14	3
			CONTRACT NO. 74918	
		ILLINOIS	FED. AID PROJECT	



**LOCATION OF PROPOSED IMPROVEMENT**

SN 012-0007

CLARK COUNTY

LIVINGSTON RD (186E)

MARSHALL

MODEL: Default  
 FILE: h:\arcgis\pub\pubroom\dat\illinois\gov\pww\DOT\Documents\DOT\_Offices\District\_7\Projects\74918\CADD\Map\Map.dwg

CLARK, MACON, & FAYETTE

USER NAME = steffemk	DESIGNED -	REVISED -
	DRAWN -	REVISED -
PLOT SCALE = 100,0000' / in.	CHECKED -	REVISED -
PLOT DATE = 5/14/2019	DATE -	REVISED -

**STATE OF ILLINOIS  
 DEPARTMENT OF TRANSPORTATION**

<b>CLARK COUNTY LOCATION MAP</b>			
<b>SN 012-0007</b>			
SCALE:	SHEET 1	OF 3 SHEETS	STA. TO STA.

F.A. RTE.	SECTION	COUNTY	TOTAL SHEETS	SHEET NO.
VAR	D7 BRIDGE REPAIRS 2020-3	*	14	4
			CONTRACT NO. 74918	
		ILLINOIS	FED. AID PROJECT	



LOCATION OF PROPOSED IMPROVEMENT

MODEL: Default  
 FILE: h:\m\c\p\pub\harron\m.d\illinois\pwr\DOT\Documents\DOT\_Offices\District\_7\Projects\74918\CADD\Map\Map.dwg

CLARK, FAYETTE, & MACON

USER NAME = steffemk	DESIGNED -	REVISED -
	DRAWN -	REVISED -
PLOT SCALE = 100,0000' / in.	CHECKED -	REVISED -
PLOT DATE = 5/14/2019	DATE -	REVISED -

**STATE OF ILLINOIS  
 DEPARTMENT OF TRANSPORTATION**

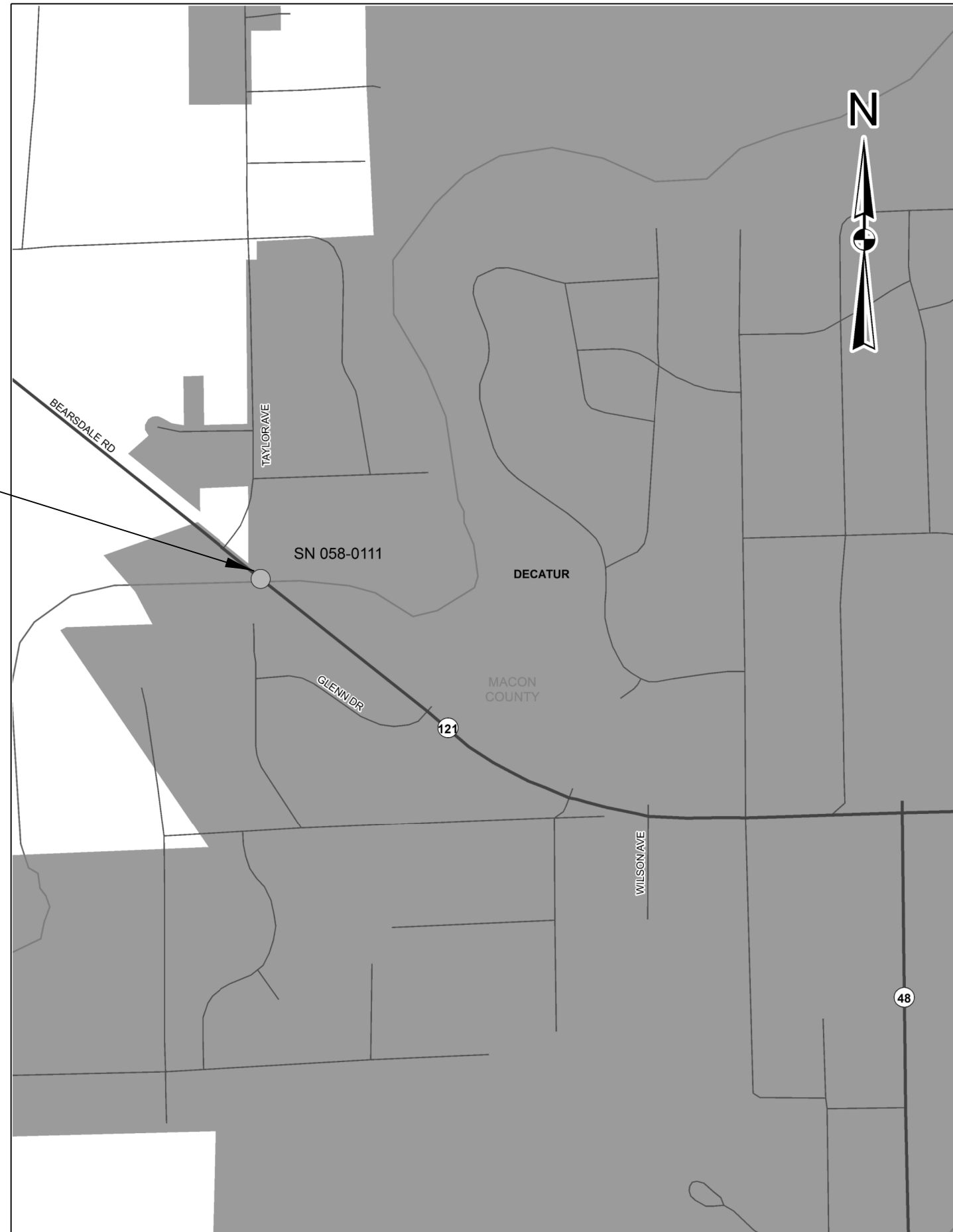
**FAYETTE COUNTY LOCATION MAP  
 SN 026-0019**

SCALE: SHEET 2 OF 3 SHEETS STA. TO STA.

F.A. RTE.	SECTION	COUNTY	TOTAL SHEETS	SHEET NO.
VAR	D7 BRIDGE REPAIRS 2020-3	*	14	5
			CONTRACT NO. 74918	
		ILLINOIS	FED. AID PROJECT	

MODEL: Default  
FILE: h:\m\c\proj\uplanroom.dwg  
PROJECT: 74918\CAAD\Map\Map.dgn  
PROJECT: 74918\CAAD\Map\Map.dgn  
PROJECT: 74918\CAAD\Map\Map.dgn

LOCATION OF PROPOSED IMPROVEMENT



CLARK, FAYETTE, & MACON

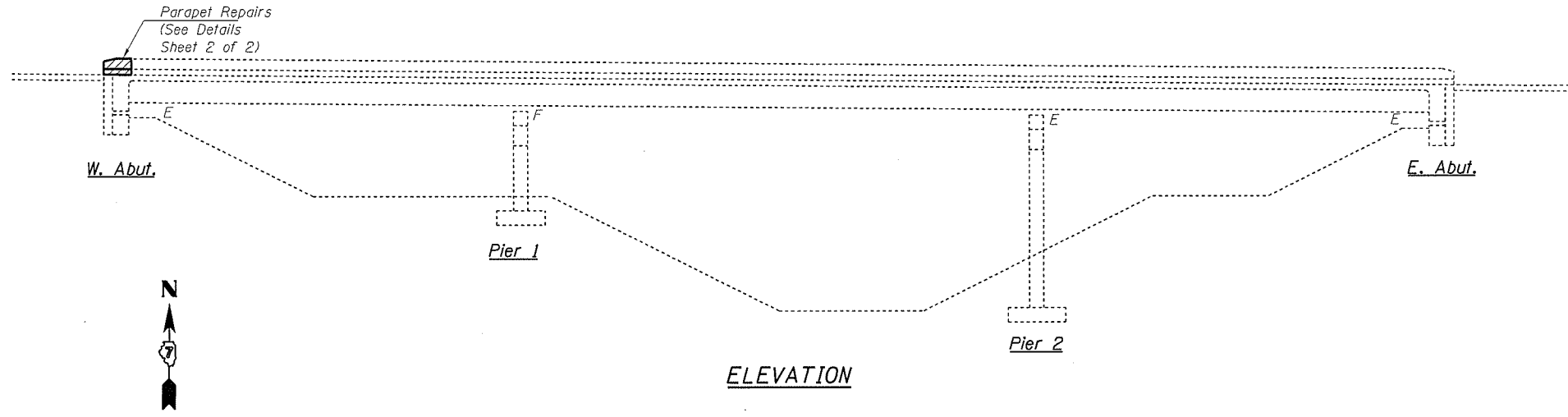
USER NAME = steffenmk	DESIGNED -	REVISED -
	DRAWN -	REVISED -
PLOT SCALE = 100,0000' / in.	CHECKED -	REVISED -
PLOT DATE = 5/14/2019	DATE -	REVISED -

**STATE OF ILLINOIS  
DEPARTMENT OF TRANSPORTATION**

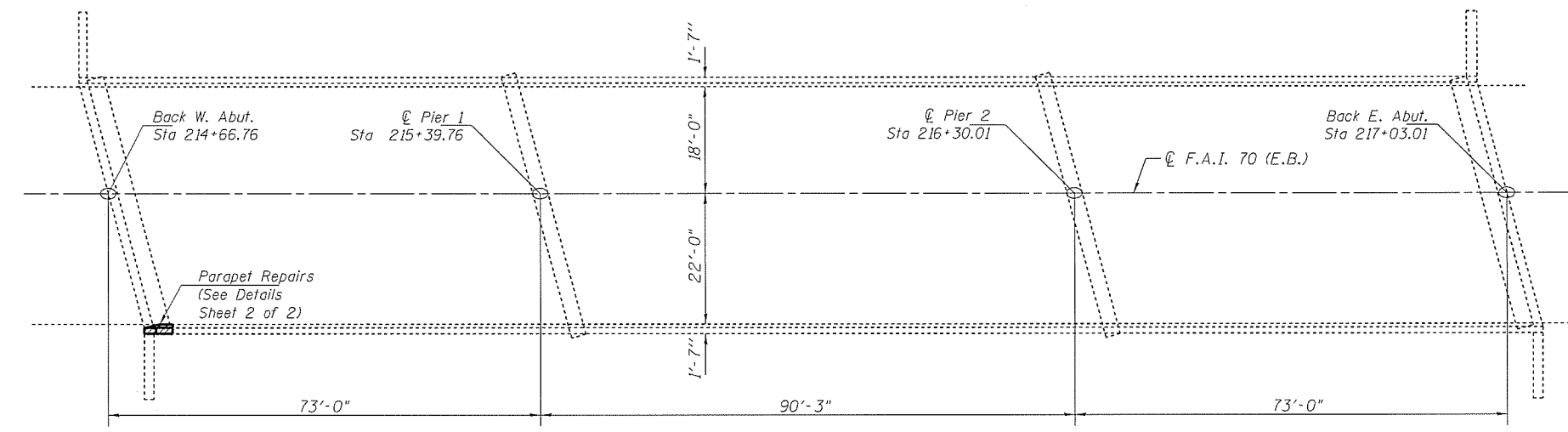
**MACON COUNTY LOCATION MAP  
SN 058-0111**

SCALE: SHEET 3 OF 3 SHEETS STA. TO STA.

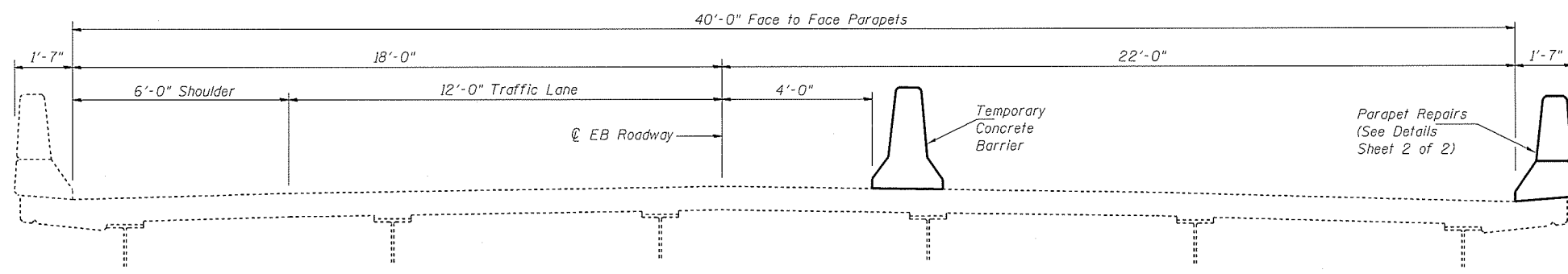
F.A. RTE.	SECTION	COUNTY	TOTAL SHEETS	SHEET NO.
VAR	D7 BRIDGE REPAIRS 2020-3	*	14	6
			CONTRACT NO. 74918	
			ILLINOIS FED. AID PROJECT	



**ELEVATION**



**PLAN**



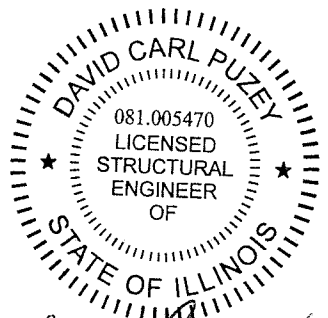
**CROSS SECTION**  
(Looking East)

**STRUCTURE NOTES**

Plan dimensions and details relative to existing plans are subject to nominal construction variations. The Contractor shall field verify existing dimensions and details affecting new construction and make necessary approved adjustments prior to construction or ordering of materials. Such variations shall not be cause for additional compensation for a change in scope of the work, however, the Contractor will be paid for the quantity actually furnished at the unit price bid for the work.

Existing reinforcement bars extending into the removal area shall be cleaned, straightened and incorporated into the new construction. Any reinforcement bars that are damaged during concrete removal shall be replaced with an approved bar splicer or anchorage system. Cost included with Concrete Removal.

Reinforcement bars designated (E) shall be epoxy coated.



*Dr. Carl Puzey 6/6/19*  
*Expires 11/30/20*

DESIGNED	D. Macklin
CHECKED	R. Walker
DRAWN	D. Macklin
CHECKED	R. Walker

DATE	MARCH 25, 2019
REVISED	
REVISED	

STATE OF ILLINOIS  
DEPARTMENT OF TRANSPORTATION

PARAPET REPAIR DETAILS  
FAI 70 (EB) OVER EAST LITTLE CREEK  
STRUCTURE 012-0007

SHEET 1 OF 2 SHEETS

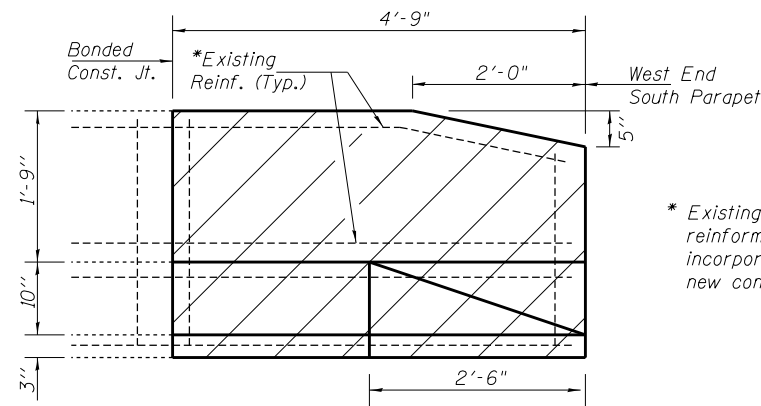
F.A.I. RTE.	SECTION	COUNTY	TOTAL SHEETS	SHEET NO.
70	07 Bridge Repairs 2020-3	CLARK	14	7
CONTRACT NO. 74918			ILLINOIS FED. AID PROJECT	

**STRUCTURE 012-0007**  
**BILL OF MATERIAL**

Bar	No.	Size	Length	Shape
d(E)	12	#5	3'-0"	L
d <sub>2</sub> (E)	6	#5	2'-0"	Γ
ITEM		UNIT	QUANTITY	
Concrete Removal		Cu. Yd.	0.5	
Concrete Superstructure		Cu. Yd.	0.5	
Reinforcement Bars, Epoxy Coated		Pound	50	
Structural Repair of Concrete (Depth ≤ 5")		Sq. Ft.	3	
*** Protective Coat		Sq. Yd.	3.5	

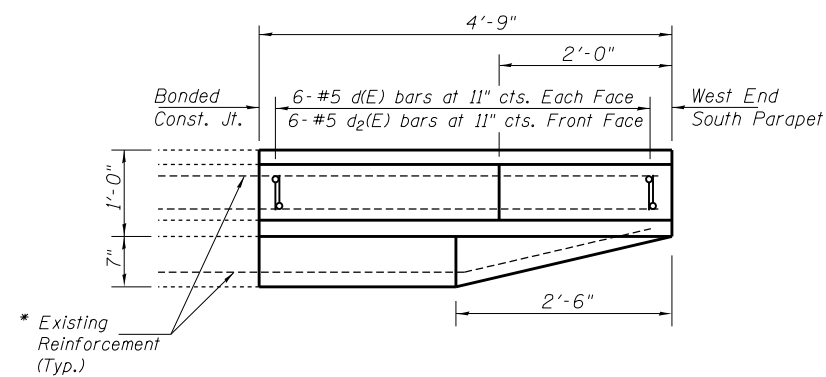
Reinforcement bars designated (E) shall be epoxy coated.

\*\*\* On new concrete only.



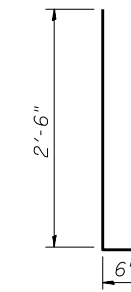
**PARAPET INSIDE ELEVATION**

(Looking South)  
Hatched Areas Indicate Removal



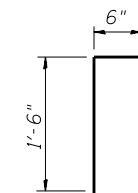
**PARTIAL PARAPET PLAN**

Showing Concrete Superstructure and Proposed Vertical Reinf. Bars

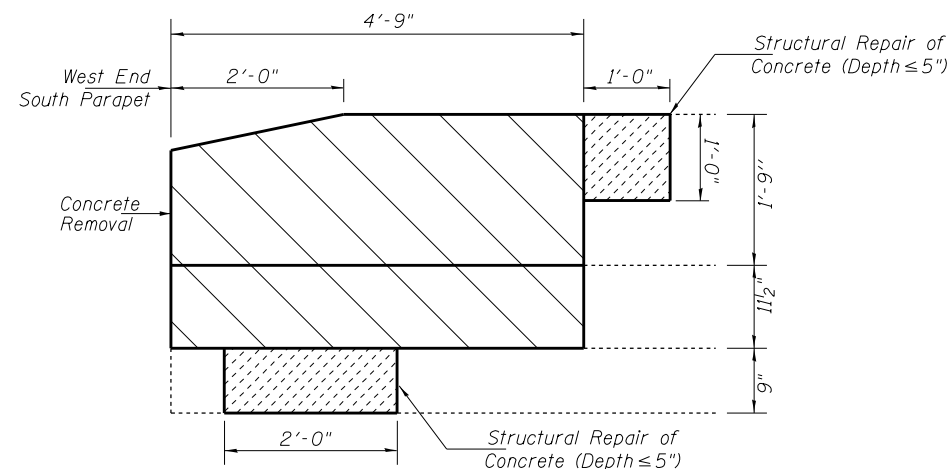


**\*\* BAR d(E)**

\*\* Bars may need to be cut to fit. Cuts to be made according to Article 508.04 of Standard Specifications.

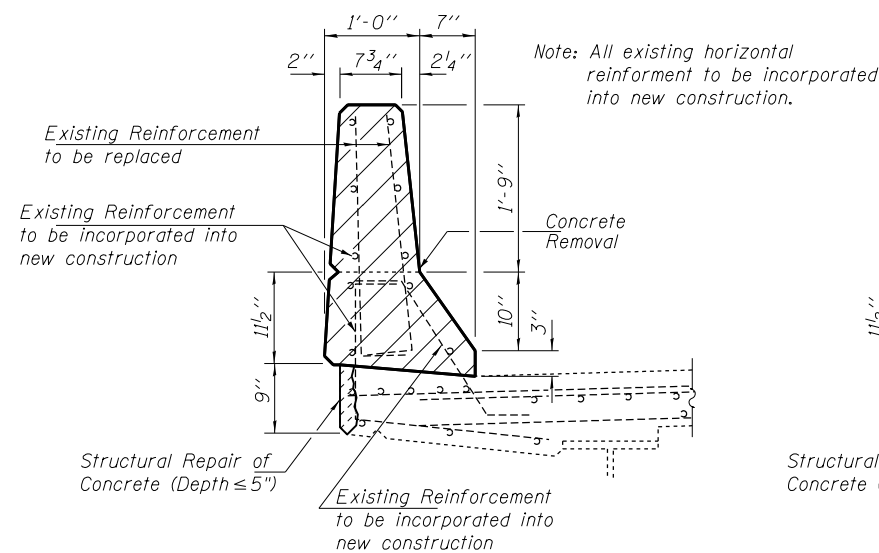


**BAR d<sub>2</sub>(E)**



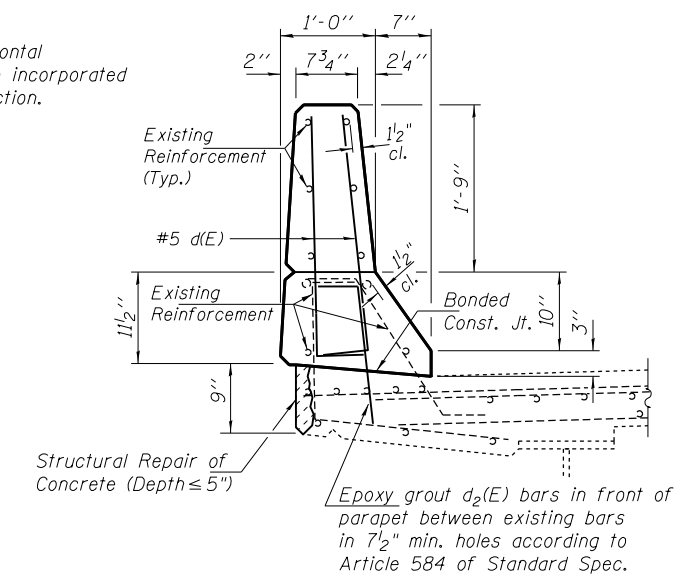
**PARAPET OUTSIDE ELEVATION**

(Looking North)



**SECTION THRU PARAPET**

Showing Removal



**SECTION THRU PARAPET**

Showing Concrete Superstructure

DESIGNED *D. Macklin*  
CHECKED *R. Walker*  
DRAWN *D. Macklin*  
CHECKED *R. Walker*

DATE MARCH 25, 2019

REVISED  
REVISED

**STATE OF ILLINOIS**  
**DEPARTMENT OF TRANSPORTATION**

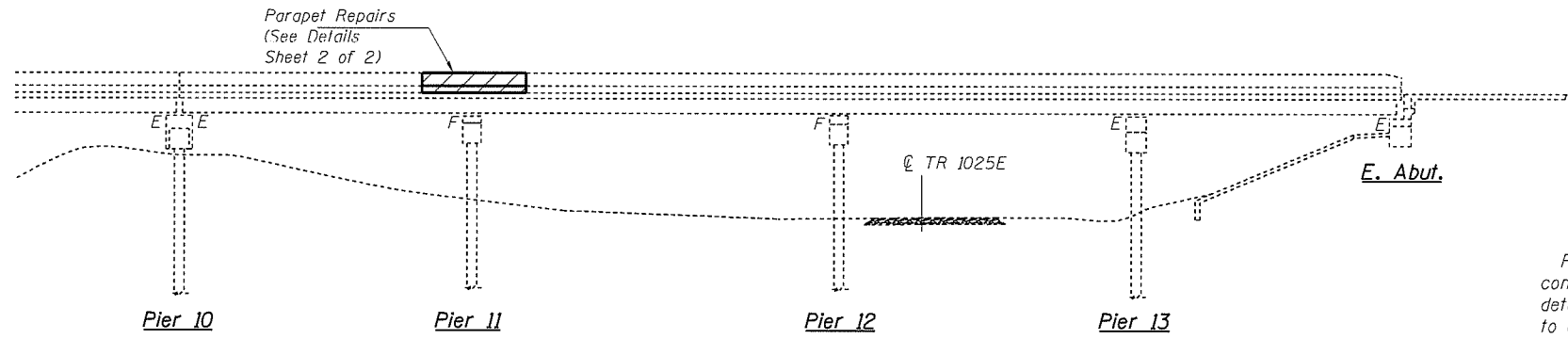
**PARAPET REPAIR DETAILS**  
**FAI 70 (EB) OVER EAST LITTLE CREEK**  
**STRUCTURE 012-0007**

SHEET 2 OF 2 SHEETS

F.A.I. RTE.	SECTION	COUNTY	TOTAL SHEETS	SHEET NO.
70	D7 Bridge Repairs 2020-3	CLARK	14	8
CONTRACT NO.			74918	

ILLINOIS FED. AID PROJECT





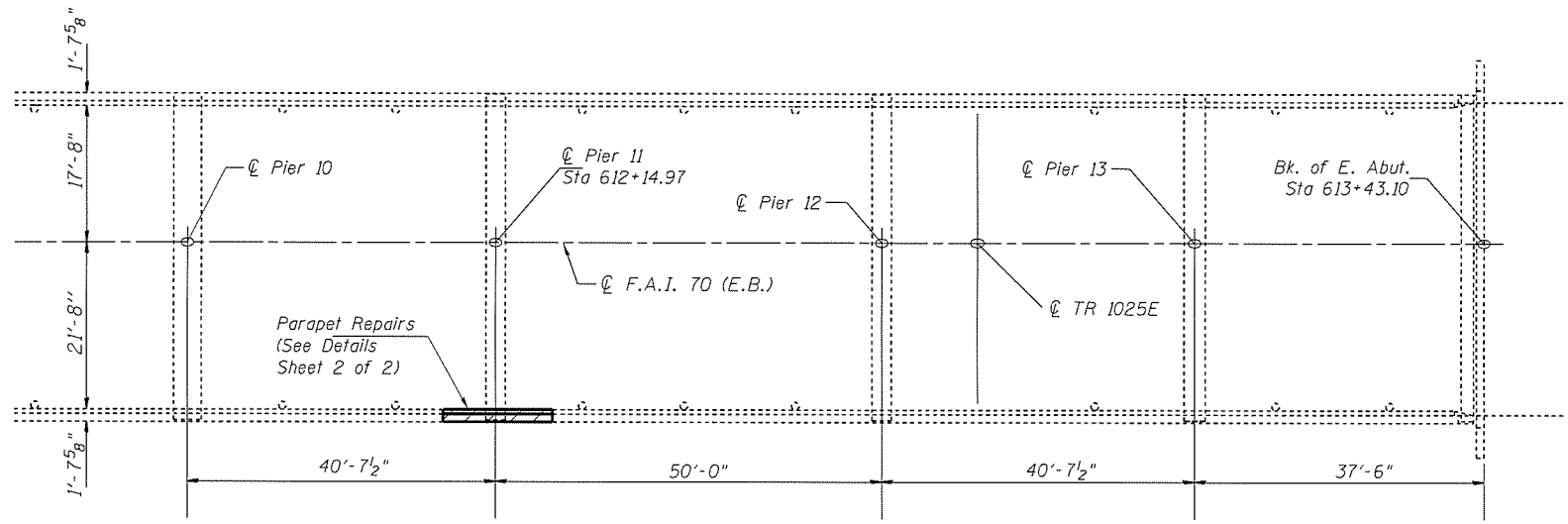
**PARTIAL ELEVATION**

**STRUCTURE NOTES**

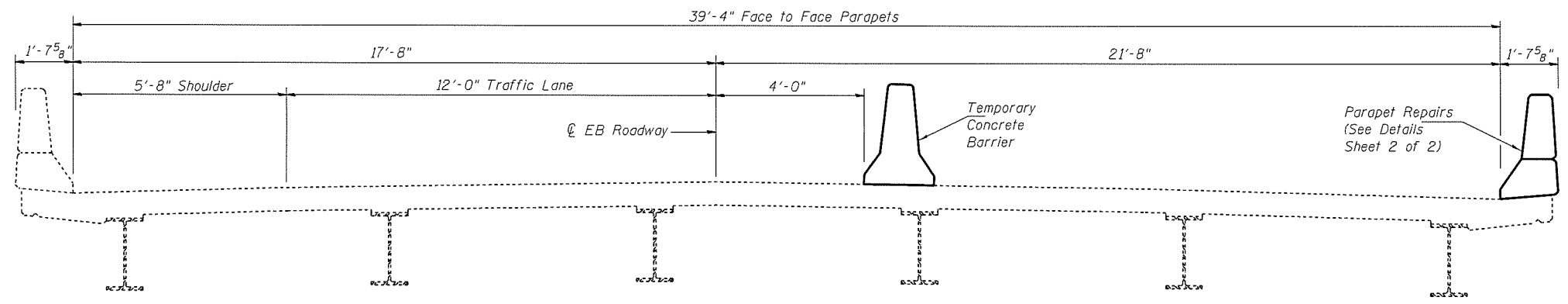
Plan dimensions and details relative to existing plans are subject to nominal construction variations. The Contractor shall field verify existing dimensions and details affecting new construction and make necessary approved adjustments prior to construction or ordering of materials. Such variations shall not be cause for additional compensation for a change in scope of the work, however, the Contractor will be paid for the quantity actually furnished at the unit price bid for the work.

Reinforcement bars designated (E) shall be epoxy coated.

Existing reinforcement bars extending into the removal area shall be cleaned, straightened and incorporated into the new construction. Any reinforcement bars that are damaged during concrete removal shall be replaced with an approved bar splicer or anchorage system. Cost included with Concrete Removal.



**PARTIAL PLAN**



**CROSS SECTION**

(Looking East)



*David Carl Puzey 6/6/19*  
*Expires 11/30/20*

DESIGNED	D. Macklin
CHECKED	R. Walker
DRAWN	D. Macklin
CHECKED	R. Walker

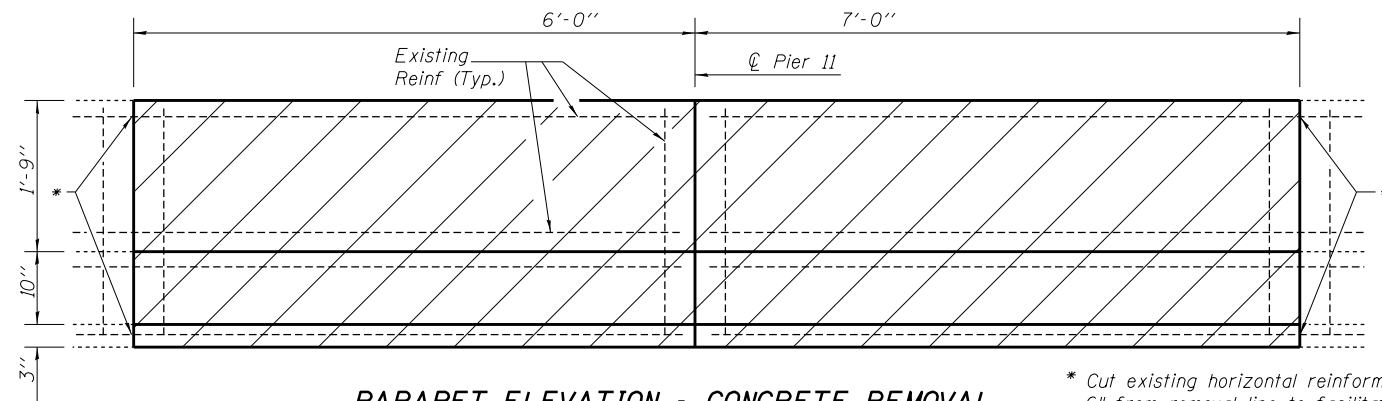
DATE	MARCH 25, 2019
REVISED	
REVISED	

**STATE OF ILLINOIS**  
**DEPARTMENT OF TRANSPORTATION**

**PARAPET REPAIR DETAILS**  
**FAI 70 (EB) OVER CAMP CREEK**  
**STRUCTURE 026-0019**

SHEET 1 OF 3 SHEETS

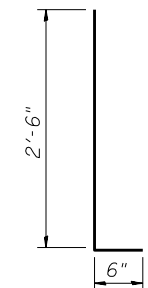
F.A.I. RTE.	SECTION	COUNTY	TOTAL SHEETS	SHEET NO.
70	07 Bridge Repairs 2020-3	FAYETTE	14	9
CONTRACT NO. 74918			ILLINOIS FED. AID PROJECT	



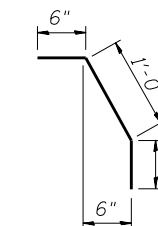
**PARAPET ELEVATION - CONCRETE REMOVAL**

Hatched Areas Indicate Removal  
(Inside Elevation, looking South)

\* Cut existing horizontal reinforcement 6" from removal line to facilitate installation of Mechanical Splicers.



**BAR d(E)**



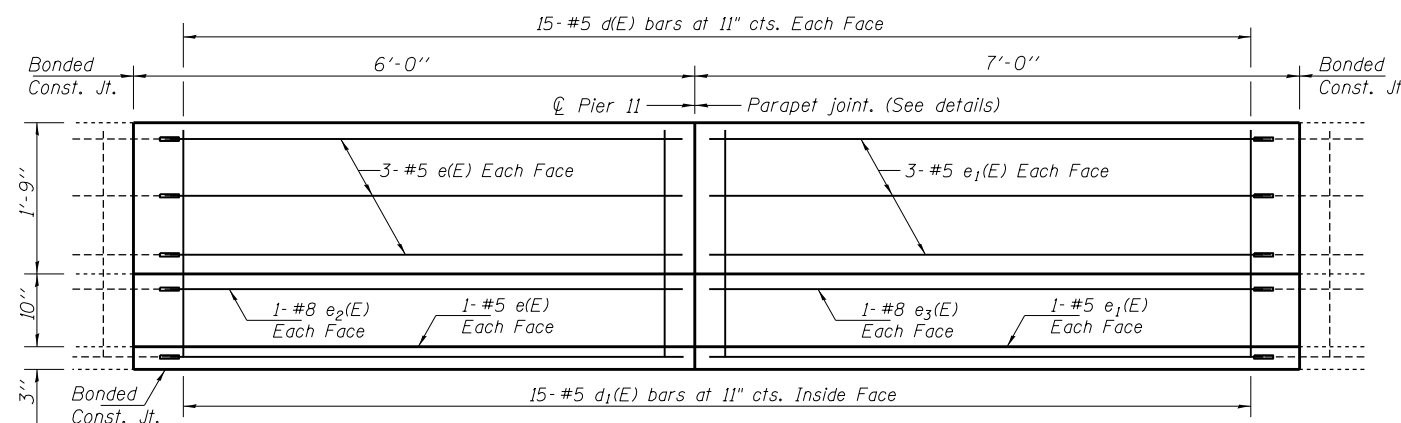
**BAR d1(E)**

**STRUCTURE 026-0019  
BILL OF MATERIAL**

Bar	No.	Size	Length	Shape
d(E)	30	#5	3'-0"	L
d1(E)	15	#5	2'-2"	└
e(E)	8	#5	5'-4"	—
e1(E)	8	#5	6'-4"	—
e2(E)	2	#8	5'-4"	—
e3(E)	2	#8	6'-4"	—
ITEM		UNIT	QUANTITY	
Concrete Removal		Cu. Yd.	1.5	
Concrete Superstructure		Cu. Yd.	1.5	
Reinforcement Bars, Epoxy Coated		Pound	290	
Mechanical Splicers		Each	20	
* Protective Coat		Sq. Yd.	9.3	

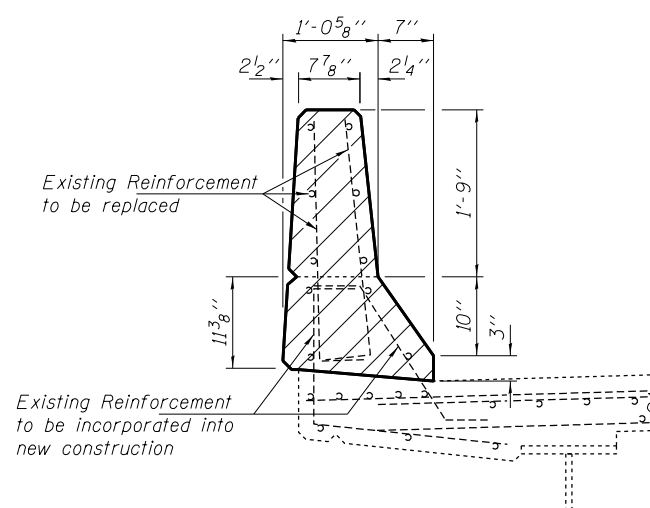
Reinforcement bars designated (E) shall be epoxy coated.

\* On new concrete only



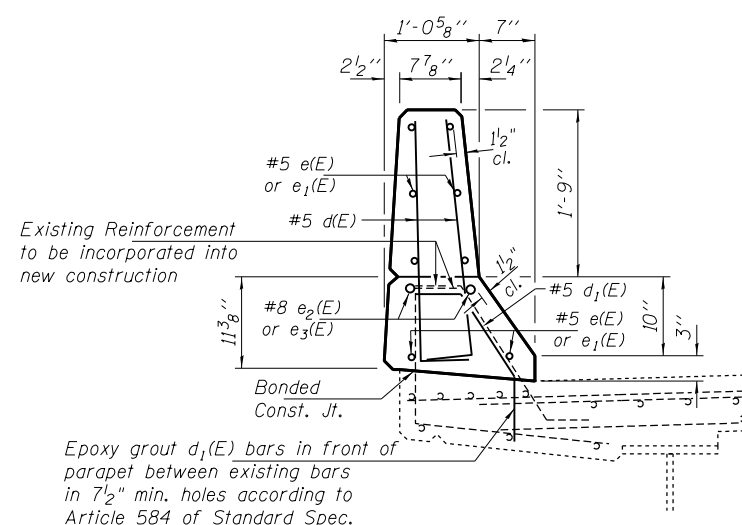
**PARAPET ELEVATION - SUPERSTRUCTURE CONCRETE**

(Inside Elevation, looking South)

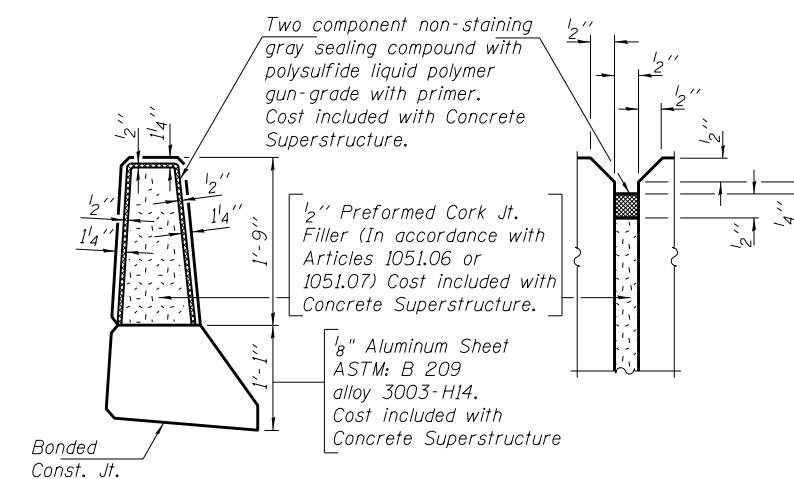


**SECTION THRU PARAPET**

Hatched area indicates removal



**SECTION THRU PARAPET**



**PARAPET JOINT DETAILS**

DESIGNED D. Macklin  
CHECKED R. Walker  
DRAWN D. Macklin  
CHECKED R. Walker

DATE MARCH 25, 2019

REVISED  
REVISED

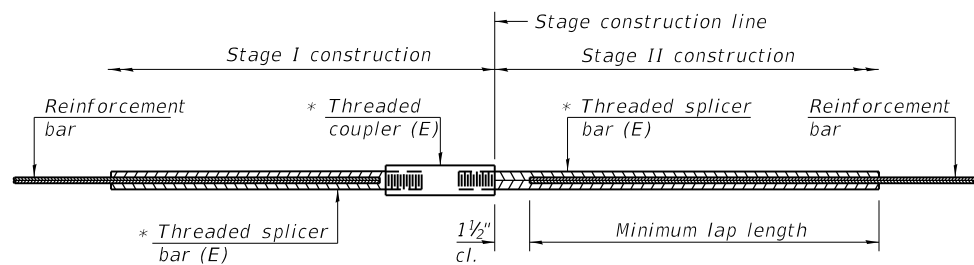
STATE OF ILLINOIS  
DEPARTMENT OF TRANSPORTATION

PARAPET REPAIR DETAILS  
FAI 70 (EB) OVER CAMP CREEK  
STRUCTURE 026-0019

SHEET 2 OF 3 SHEETS

F.A.I. RTE.	SECTION	COUNTY	TOTAL SHEETS	SHEET NO.
70	D7 Bridge Repairs 2020-3	FAYETTE	14	10
CONTRACT NO.			74918	

ILLINOIS FED. AID PROJECT

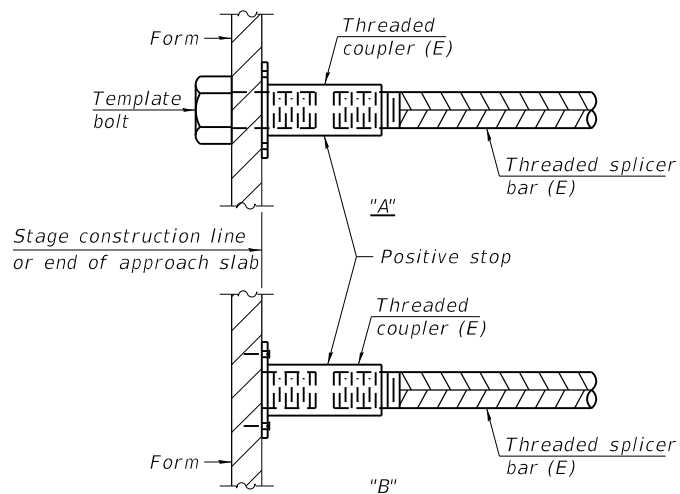


**STANDARD BAR SPLICER ASSEMBLY**

Threaded splicer bar length = min. lap length + 1 1/2" + thread length

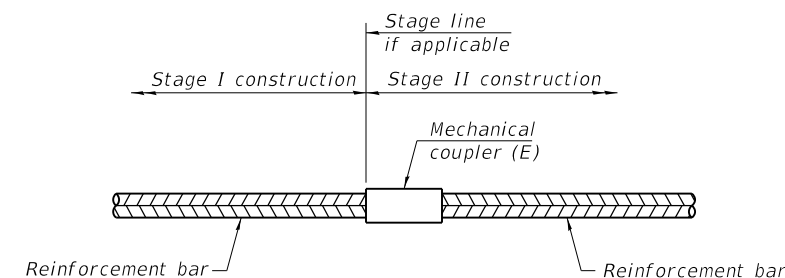
\* Epoxy not required on Bar Splicer Assembly components used in conjunction with black bars.

Location	Bar size	No. assemblies required	Minimum lap length



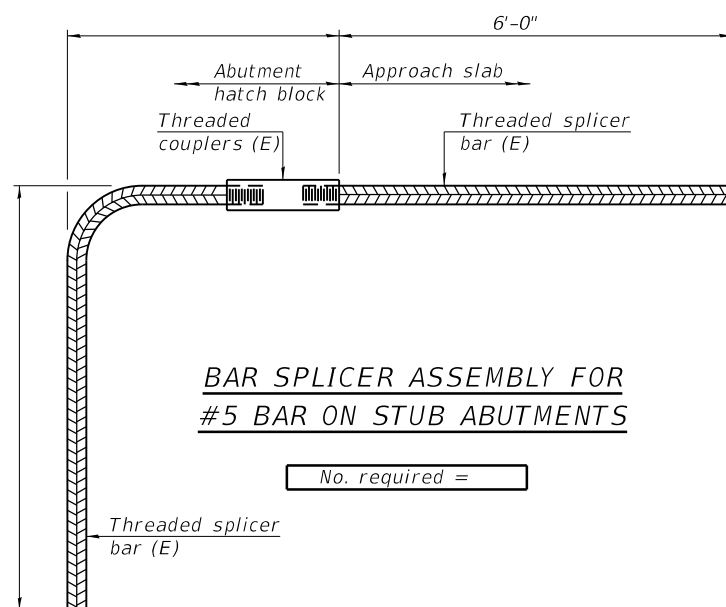
**INSTALLATION AND SETTING METHODS**

"A" : Set bar splicer assembly by means of a template bolt.  
 "B" : Set bar splicer assembly by nailing to wood forms or cementing to steel forms.  
 (E) : Indicates epoxy coating.



**STANDARD MECHANICAL SPLICER**

Location	Bar size	No. assemblies required
Parapet	#5	16
Parapet	#8	4



**BAR SPLICER ASSEMBLY FOR #5 BAR ON STUB ABUTMENTS**

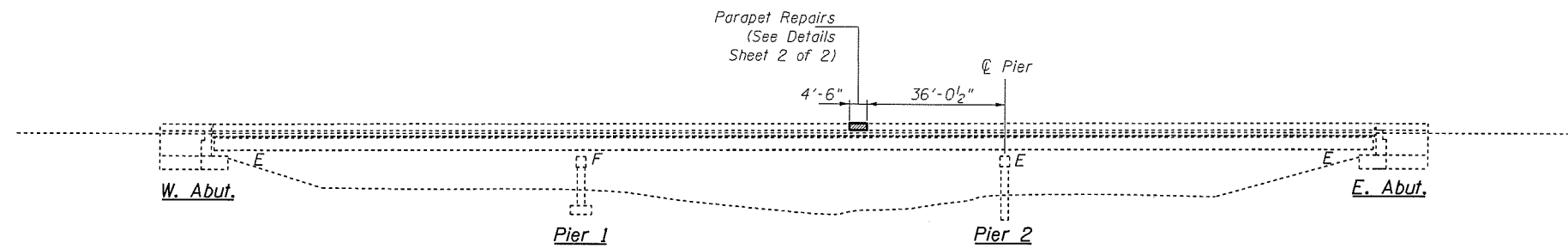
No. required =

**NOTES**

Splicer bars shall be deformed with threaded ends and have a minimum 60 ksi yield strength.  
 All reinforcement shall be lapped and tied to the splicer bars.  
 Bar splicer assemblies shall be epoxy coated according to the requirements for reinforcement bars. See Section 508 of the Standard Specifications.  
 See approved list of bar splicer assemblies and mechanical splicers for alternatives.

BSD-1 2-17-2017

DESIGNED <i>D. Macklin</i>	DATE <u>MARCH 25, 2019</u>	STATE OF ILLINOIS DEPARTMENT OF TRANSPORTATION	BAR SPLICER ASSEMBLY AND MECHANICAL SPLICER DETAILS STRUCTURE NO. 026-0019	F.A.I. RTE.	SECTION	COUNTY	TOTAL SHEETS	SHEET NO.
CHECKED <i>R. Walker</i>	REVISOR			70	D7 Bridge Repairs 2020-3	FAYETTE	14	11
DRAWN <i>D. Macklin</i>	REVISOR	SHEET 3 OF 3 SHEETS		CONTRACT NO. 74918		ILLINOIS FED. AID PROJECT		
CHECKED <i>R. Walker</i>								



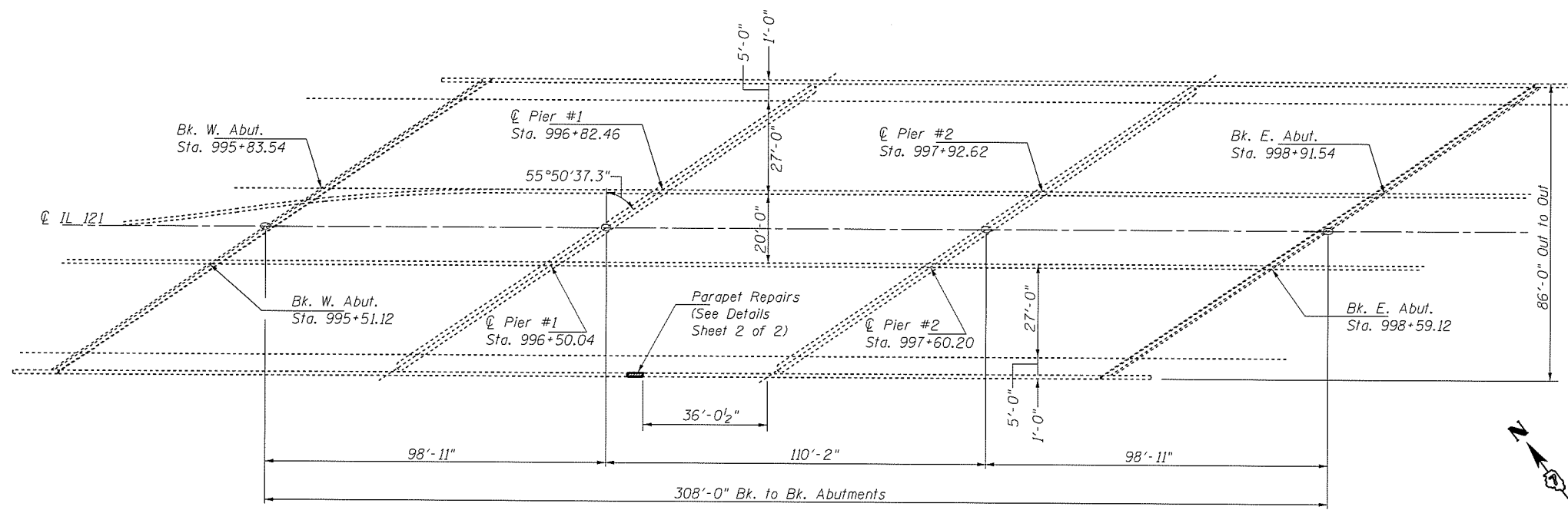
**ELEVATION**

**STRUCTURE NOTES**

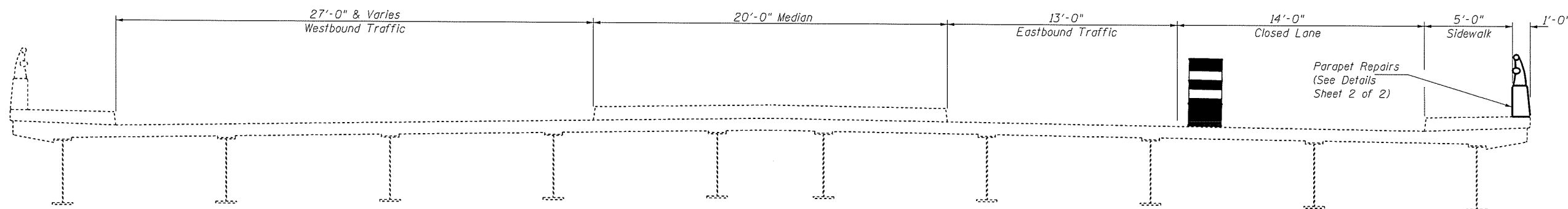
Plan dimensions and details relative to existing plans are subject to nominal construction variations. The Contractor shall field verify existing dimensions and details affecting new construction and make necessary approved adjustments prior to construction or ordering of materials. Such variations shall not be cause for additional compensation for a change in scope of the work, however, the Contractor will be paid for the quantity actually furnished at the unit price bid for the work.

Existing reinforcement bars extending into the removal area shall be cleaned, straightened and incorporated into the new construction. Any reinforcement bars that are damaged during concrete removal shall be replaced with an approved bar splicer or anchorage system. Cost included with Concrete Removal.

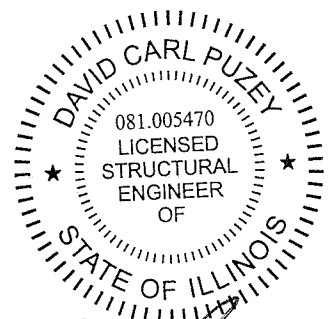
Reinforcement bars designated (E) shall be epoxy coated.



**PLAN**



**CROSS SECTION**  
(Looking East)



*David Carl Puzey 6/6/19*  
*Expires 11/30/20*

DESIGNED *D. Macklin*  
CHECKED *R. Walker*  
DRAWN *D. Macklin*  
CHECKED *R. Walker*

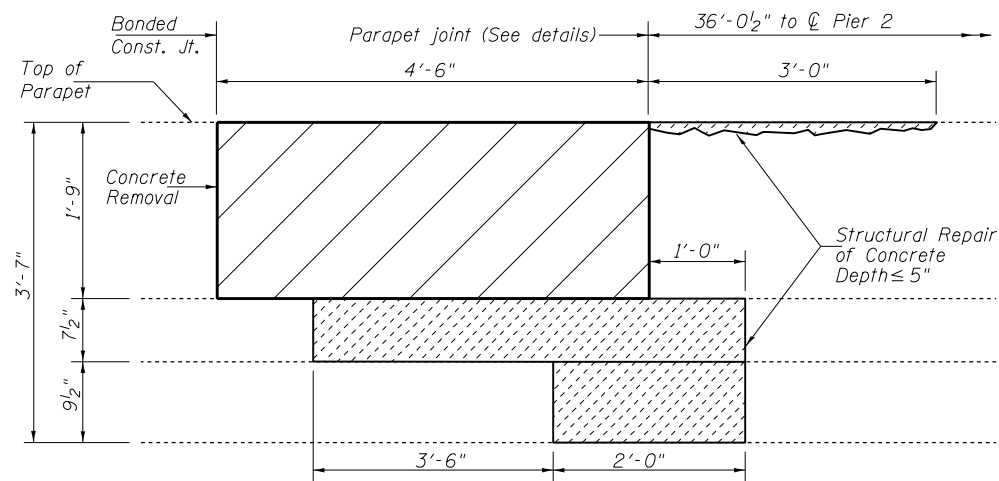
DATE APRIL 4, 2019  
REVISED  
REVISED

STATE OF ILLINOIS  
DEPARTMENT OF TRANSPORTATION

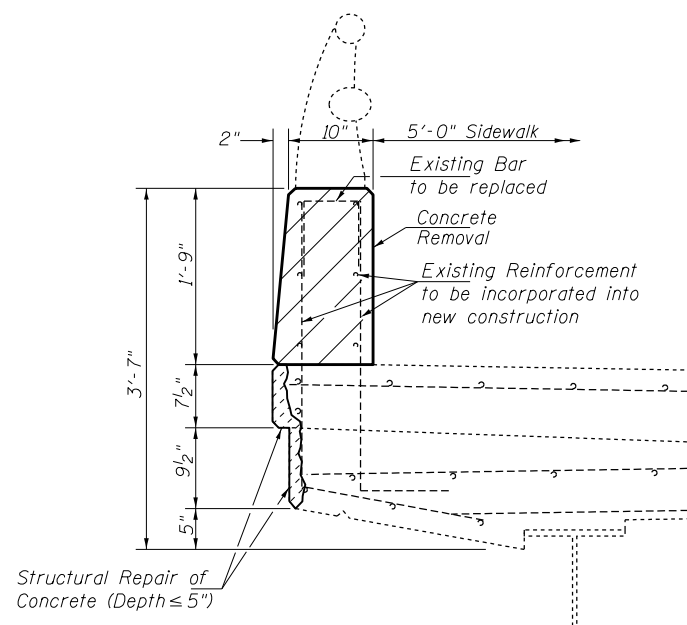
PARAPET REPAIR DETAILS  
FAP 320 (ILL-121) OVER STEVENS CREEK  
STRUCTURE 058-0111

SHEET 1 OF 3 SHEETS

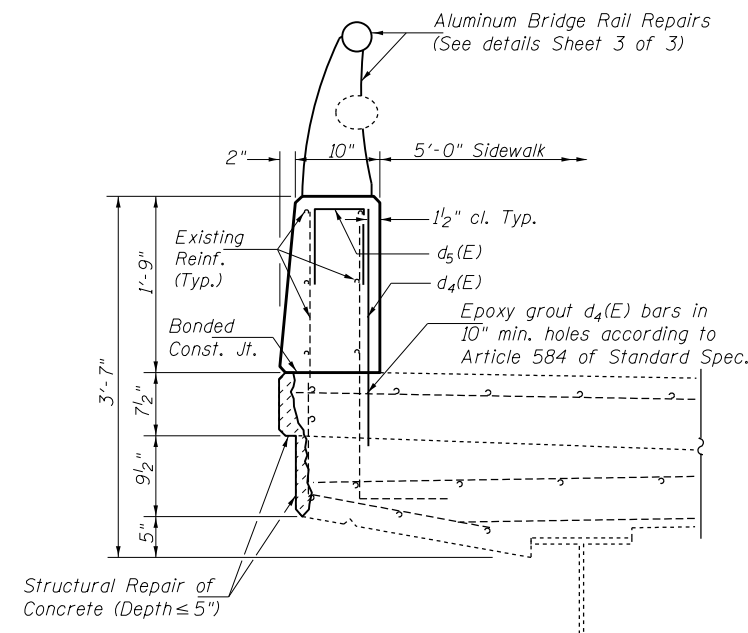
F.A.P. RTE.	SECTION	COUNTY	TOTAL SHEETS	SHEET NO.
320	07 Bridge Repairs 2020-3	MACON	14	12
				CONTRACT NO. 74918
ILLINOIS FED. AID PROJECT				



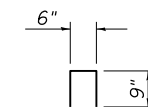
**PARAPET OUTSIDE ELEVATION**  
(Looking North)



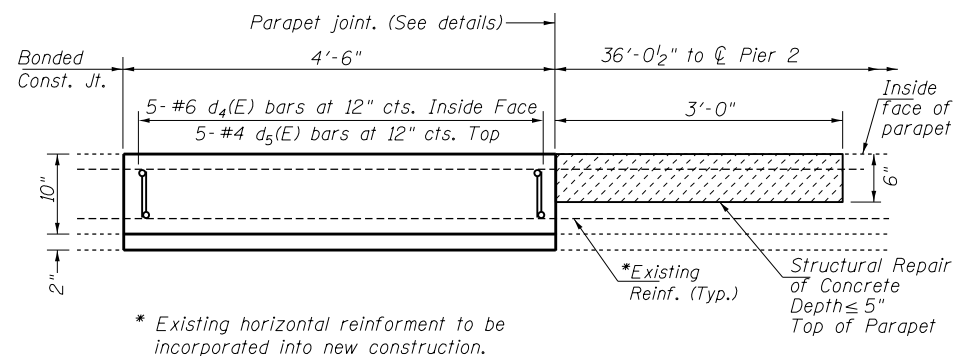
**SECTION THRU PARAPET**  
Showing Removal



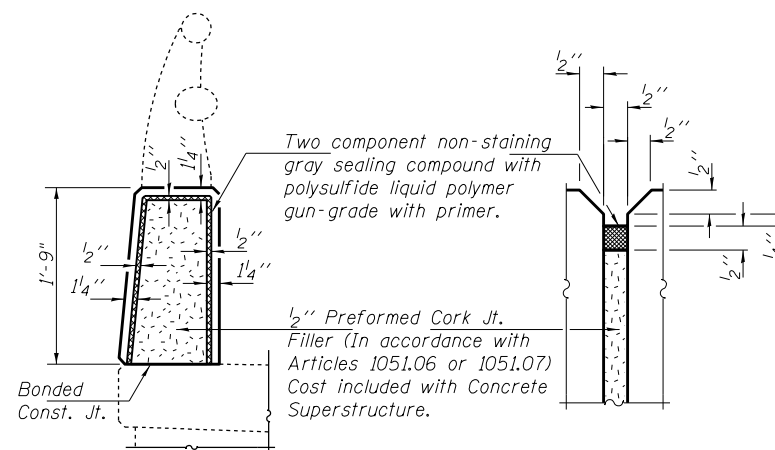
**SECTION THRU PARAPET**  
Showing Concrete Superstructure



**BAR d<sub>5</sub>(E)**



**PARTIAL PARAPET PLAN**  
Showing Concrete Superstructure  
and Proposed Vertical Reinf. Bars



**PARAPET JOINT DETAILS**

**STRUCTURE 058-0111**  
**BILL OF MATERIAL**

Bar	No.	Size	Length	Shape
d <sub>4</sub> (E)	5	#6	2'-5"	—
d <sub>5</sub> (E)	5	#4	2'-0"	□
ITEM		UNIT	QUANTITY	
Concrete Removal		Cu. Yd.	0.3	
Concrete Superstructure		Cu. Yd.	0.3	
Reinforcement Bars, Epoxy Coated		Pound	25	
Structural Repair of Concrete (Depth ≤ 5")		Sq. Ft.	7	
** Protective Coat		Sq. Yd.	3.0	

Reinforcement bars designated (E) shall be epoxy coated.  
\*\* On new concrete only

DESIGNED *D. Macklin*  
CHECKED *R. Walker*  
DRAWN *D. Macklin*  
CHECKED *R. Walker*

DATE APRIL 4, 2019  
REVISED  
REVISED

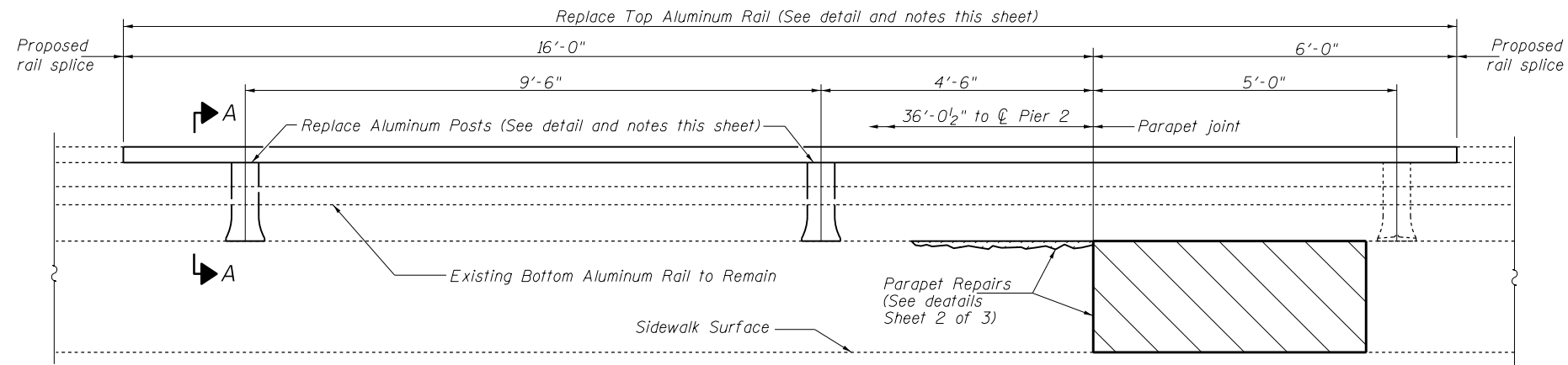
**STATE OF ILLINOIS**  
**DEPARTMENT OF TRANSPORTATION**

**PARAPET REPAIR DETAILS**  
**FAP 320 (ILL-121) OVER STEVENS CREEK**  
**STRUCTURE 058-0111**

SHEET 2 OF 3 SHEETS

F.A.P. RTE.	SECTION	COUNTY	TOTAL SHEETS	SHEET NO.
320	D7 Bridge Repairs 2020-3	MACON	14	13
CONTRACT NO.			74918	

ILLINOIS FED. AID PROJECT



**BRIDGE RAIL INSIDE ELEVATION**  
(Looking South)

**ALUMINUM RAIL REPAIR NOTES**

Two existing aluminum rail posts and 22'-0" of top aluminum rail have been damaged and must be replaced in-kind. This work shall be included in the contract unit price for CONCRETE SUPERSTRUCTURE.

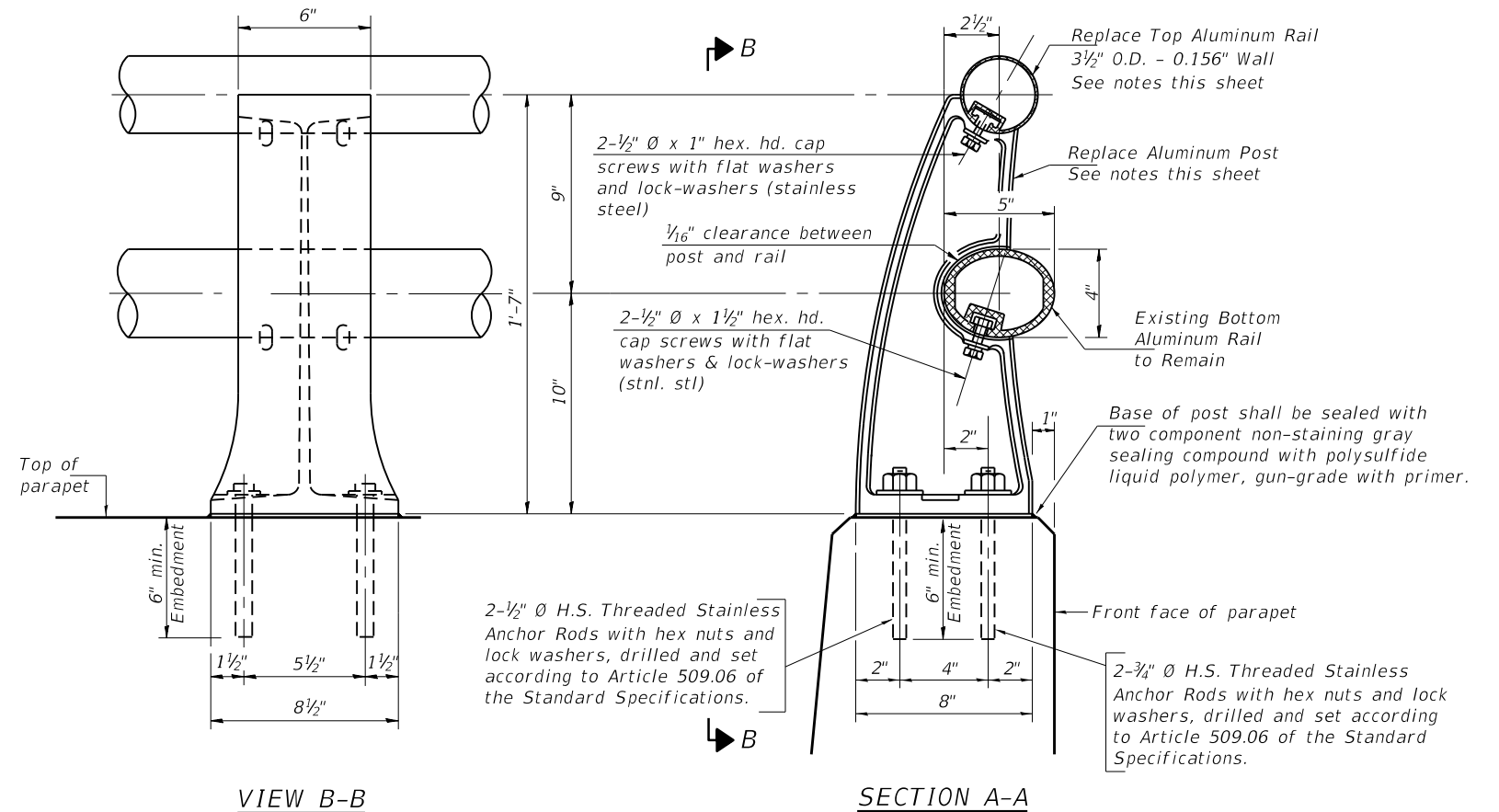
The District 7 Bridge Maintenance Unit shall provide one section of 3½" O.D. aluminum rail of sufficient length to replace the damaged section of top rail and one rail splicer assembly. The Bridge Maintenance Unit shall also provide two aluminum rail posts of the type specified. The District Bridge Maintenance Engineer may be contacted at (217) 342-8377 for more information.

The top aluminum rail shall be sawed cleanly at the proposed rail splice locations in order to create two new splices. One rail splicer assembly shall be salvaged from the existing rail and one splicer shall be provided by the District 7 Bridge Maintenance Unit to make the two required splices to the section of the top rail to be replaced.

The existing bottom aluminum rail is very slightly damaged, but it is not bent and shall be reused. This existing bottom rail shall be connected to the two replaced posts using appropriate new or salvaged hardware and fasteners.

Some hardware required to complete this work may be salvaged from removed portions of the existing rail, with the approval of the Engineer.

All other hardware and fasteners required to complete this work shall be provided by the Contractor. All new bolts and anchors shall be stainless steel. These materials shall be included in the contract unit price for CONCRETE SUPERSTRUCTURE.



**RAIL POST DETAILS**

DESIGNED	D. Macklin
CHECKED	R. Walker
DRAWN	D. Macklin
CHECKED	R. Walker

DATE	APRIL 4, 2019
REVISED	
REVISED	

STATE OF ILLINOIS  
DEPARTMENT OF TRANSPORTATION

**PARAPET REPAIR DETAILS**  
**FAP 320 (ILL-121) OVER STEVENS CREEK**  
**STRUCTURE 058-0111**

SHEET 3 OF 3 SHEETS

F.A.P. RTE.	SECTION	COUNTY	TOTAL SHEETS	SHEET NO.
320	D7 Bridge Repairs 2020-3	MACON	14	14
CONTRACT NO.			74918	

ILLINOIS FED. AID PROJECT