

INDEX OF SHEETS

1 COVER SHEET
 2 INDEX OF SHEETS AND HIGHWAY STANDARDS
 3 GENERAL NOTES
 4-9 SUMMARY OF QUANTITIES
 10-15 TYPICAL SECTIONS
 16-17 SCHEDULE OF QUANTITIES
 18-19 ALIGNMENT, TIES, & BENCHMARKS
 20-21 REMOVAL PLAN
 22-30 PATH PLAN AND PROFILE, PAVEMENT MARKING, AND SIGNS
 31-32 PATH DETAIL PLAN
 33-34 INTERSECTION DETAIL PLANS
 35 CONCRETE BARRIER AND SLAB PLAN
 36 **35A-35B CONCRETE BRIDGE RAIL (SPECIAL GRADING PLAN)**
 37-38 TEMPORARY AND PERMANENT EROSION CONTROL PLAN
 39-51 STRUCTURE PLANS
 52-57 IDOT DISTRICT ONE DETAILS
 58-62 CROSS SECTION SHEETS

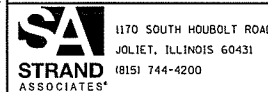
HIGHWAY STANDARDS

000001-07 STANDARD SYMBOLS, ABBREVIATIONS AND PATTERNS
 001001-02 AREAS OF REINFORCEMENT BARS
 001006 DECIMAL OF AN INCH AND OF A FOOT
 280001-07 TEMPORARY EROSION CONTROL SYSTEMS
 420001-09 PAVEMENT JOINTS
 424001-11 PERPENDICULAR CURB RAMPS FOR SIDEWALKS
 424026-03 ENTRANCE / ALLEY PEDESTRIAN CROSSINGS
 424031-02 MEDIAN PEDESTRIAN CROSSINGS
 442201-03 CLASS C AND D PATCHES
 542401-03 METAL FLARED END SECTION FOR PIPE CULVERTS
 606001-07 CONCRETE CURB TYPE B AND COMBINATION CONCRETE CURB AND GUTTER
 606301-04 PC CONCRETE ISLANDS AND MEDIANS
 630001-12 STEEL PLATE BEAM GUARDRAIL
 631011-10 TRAFFIC BARRIER TERMINAL TYPE 2
 701001-02 OFF-ROAD OPERATIONS, 2L, 2W, MORE THAN 15' (4.5 M) AWAY
 701006-05 OFF-ROAD OPERATIONS, 2L, 2W, 15' (4.5 M) TO 24" (600 MM) FROM PAVEMENT EDGE
 701011-04 OFF-ROAD MOVING OPERATIONS, 2L, 2W, DAY ONLY
 701301-04 LANE CLOSURE, 2L, 2W, SHORT TIME OPERATIONS
 701311-03 LANE CLOSURE, 2L, 2W, MOVING OPERATIONS - DAY ONLY
 701501-06 URBAN LANE CLOSURE, 2L, 2W, UNDIVIDED
 701701-10 URBAN LANE CLOSURE, MULTI-LANE INTERSECTION
 701801-06 SIDEWALK, CORNER OR CROSSWALK CLOSURE
 701901-08 TRAFFIC CONTROL DEVICES
 720001-01 SIGN PANEL MOUNTING DETAILS
 720006-04 SIGN PANEL ERECTION DETAILS
 720011-01 METAL POSTS FOR SIGNS, MARKERS, AND DELINEATORS
 725001-01 OBJECT AND TERMINAL MARKERS
 728001-01 TELESCOPING STEEL SIGN SUPPORT
 729001-01 APPLICATIONS OF TYPES A AND B METAL POSTS (FOR SIGNS & MARKERS)
 731001-01 BASE FOR TELESCOPING STEEL SIGN SUPPORT
 780001-05 TYPICAL PAVEMENT MARKINGS
 782006 GUARDRAIL AND BARRIER WALL REFLECTOR MOUNTING DETAILS
 BLR 14-12 PORTLAND CEMENT CONCRETE PAVEMENT (NONREINFORCED)

DISTRICT ONE STANDARD DETAILS

BD-22 PAVEMENT PATCHING FOR HMA SURFACED PAVEMENT
 BD-24 CURB OR CURB AND GUTTER REMOVAL AND REPLACEMENT
 BM-20 PRUNING FOR SAFETY AND EQUIPMENT CLEARANCE
 TC-10 TRAFFIC CONTROL AND PROTECTION FOR SIDE ROADS, INTERSECTIONS AND DRIVEWAYS
 TC-13 DISTRICT ONE TYPICAL PAVEMENT MARKINGS
 TC-22 ARTERIAL ROAD INFORMATION SIGN

FILE NAME = S:\JDL\16480--6499\6437\102\Drawings\CAD\Micro\CAO\Sheets\0812345-shr-index.dgn



USER NAME = JakeSc	DESIGNED -	REVISED - 7-26-19
MODEL NAME = Default	DRAWN -	REVISED -
PLOT SCALE = 2.0000 ' / in.	CHECKED -	REVISED -
PLOT DATE = 3/29/2019	DATE - 3/29/2019	REVISED -

STATE OF ILLINOIS
 DEPARTMENT OF TRANSPORTATION

INDEX OF SHEETS AND HIGHWAY STANDARDS

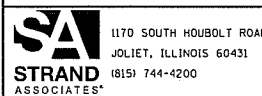
SCALE: N/A SHEET 1 OF 1 SHEETS STA. TO STA.

F.A.U. RTE.	SECTION	COUNTY	TOTAL SHEETS	SHEET NO.
392	15-00024-00-BT	WILL	62	2
CONTRACT NO. 61F18				
ILLINOIS FED. AID PROJECT				

CODE NO.	ITEM	UNIT	TOTAL QUANTITY	CONSTRUCTION CODE		
				BRIDGE S. N. #099-PO12	BARRIER/ ANCHORAGE SLAB	MULTI-USE PATH 0028
				80% FED 20% LOCAL URBAN	80% FED 20% LOCAL URBAN	80% FED 20% LOCAL URBAN
20200100	EARTH EXCAVATION	CU YD	314			314
20201200	REMOVAL AND DISPOSAL OF UNSUITABLE MATERIAL	CU YD	11			11
21001000	GEOTECHNICAL FABRIC FOR GROUND STABILIZATION	SO YD	51			51
21101615	TOPSOIL FURNISH AND PLACE, 4"	SO YD	1,713			1,713
△ 25000210	SEEDING, CLASS 2A	ACRE	.5			0.5
△ 25000310	SEEDING, CLASS 4	ACRE	.25			0.25
△ 25100630	EROSION CONTROL BLANKET	SO YD	1,713			1,713
28000250	TEMPORARY EROSION CONTROL SEEDING	POUND	121			121
28000305	TEMPORARY DITCH CHECKS	FOOT	55			55
28000400	PERIMETER EROSION BARRIER	FOOT	529			529
28000510	INLET FILTERS	EACH	2			2
28100107	STONE RIPRAP, CLASS A4	SO YD	81	81		
28200200	FILTER FABRIC	SO YD	81	81		
+ 30300001	AGGREGATE SUBGRADE IMPROVEMENT	CU YD	17			17
35101800	AGGREGATE BASE COURSE, TYPE B 6"	SO YD	951			951

△ SPECIALTY ITEM + SPECIAL PROVISION

FILE NAME = S:\JUL\6400--6499\6437\102\Drawings\CADD\Micro\CA00D_Sheets\4812345--sh-500.dgn



1170 SOUTH HOUBOLT ROAD
JOLIET, ILLINOIS 60431
(815) 744-4200

USER NAME = JakeSo
MODEL NAME = Default
PLOT SCALE = 2.0000 ' / in.
PLOT DATE = 7/25/2019

DESIGNED -
DRAWN -
CHECKED -
DATE - 7/25/2019

REVISED - 07/24/2019
REVISED -
REVISED -
REVISED -

STATE OF ILLINOIS
DEPARTMENT OF TRANSPORTATION

SUMMARY OF QUANTITIES

SCALE: N/A SHEET 1 OF 6 SHEETS STA. TO STA.

F.A.U. RTE.	SECTION	COUNTY	TOTAL SHEETS	SHEET NO.
392	15-00024-00-BT	WILL	62	4
ILLINOIS FED. AID PROJECT			CONTRACT NO. 61F18	

CODE NO.	ITEM	UNIT	TOTAL QUANTITY	CONSTRUCTION CODE		
				BRIDGE S.N. #099-P012	BARRIER/ ANCHORAGE SLAB	MULTI-USE PATH 0028
				80% FED 20% LOCAL URBAN	80% FED 20% LOCAL URBAN	80% FED 20% LOCAL URBAN
40600275	BITUMINOUS MATERIALS (PRIME COAT)	POUND	2,253			2,253
40603335	HOT-MIX ASPHALT SURFACE COURSE, MIX "D", N50	TON	75			75
42400200	PORTLAND CEMENT CONCRETE SIDEWALK 5 INCH	SQ FT	1,308			1,308
42400800	DETECTABLE WARNINGS	SQ FT	112			112
44000100	PAVEMENT REMOVAL	SQ YD	226			226
44000200	DRIVEWAY PAVEMENT REMOVAL	SQ YD	72			72
44000500	COMBINATION CURB AND GUTTER REMOVAL	FOOT	89			89
44000600	SIDEWALK REMOVAL	SQ FT	330			330
44003100	MEDIAN REMOVAL	SQ FT	311			311
44004250	PAVED SHOULDER REMOVAL	SQ YD	66			66
44201705	CLASS D PATCHES, TYPE II, 5 INCH	SQ YD	25			25
48101500	AGGREGATE SHOULDERS, TYPE B 6"	SQ YD	23			23
50105220	PIPE CULVERT REMOVAL	FOOT	77			77
50200100	STRUCTURE EXCAVATION	CU YD	75	67	8	

A SPECIALTY ITEM + SPECIAL PROVISION

FILE NAME = SA\JUL\64400-6499\6437\02\Drawings\CADD\Micro\CA00_Sheets\4812345-shl-500.dgn



1170 SOUTH HOUBOLT ROAD JOLIET, ILLINOIS 60431 (815) 744-4200	USER NAME = JakeSc MODEL NAME = Default PLOT SCALE = 2.0000 ' / in. PLOT DATE = 7/25/2019	DESIGNED - DRAWN - CHECKED - DATE - 7/25/2019	REVISED - 07/24/2019 REVISED - REVISED - REVISED -
---	--	--	---

STATE OF ILLINOIS
DEPARTMENT OF TRANSPORTATION

SUMMARY OF QUANTITIES			
SCALE: N/A	SHEET 2 OF 6 SHEETS	STA.	TO STA.

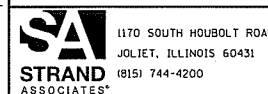
F.A.U. RTE. 392	SECTION 15-00024-00-BT	COUNTY WILL	TOTAL SHEETS 62	SHEET NO. 5
CONTRACT NO. 61F18				
ILLINOIS FED. AID PROJECT				

CODE NO.	ITEM	UNIT	TOTAL QUANTITY	CONSTRUCTION CODE		
				BRIDGE S.N. #099-P012	BARRIER/ ANCHORAGE SLAB	MULTI-USE PATH 0028
				80% FED 20% LOCAL URBAN	80% FED 20% LOCAL URBAN	80% FED 20% LOCAL URBAN
△ A2003020	TREE, CELTIS OCCIDENTALIS PRAIRIE PRIDE (PRAIRIE PRIDE HACKBERRY), 2-1/2" CALIPER, BALLED AND BURLAPPED	EACH	1			1
△ A2005020	TREE, GYMNOCLADUS DIOICUS (KENTUCKY COFFEETREE), 2-1/2" CALIPER, BALLED AND BURLAPPED	EACH	1			1
△ A2005620	TREE, OSTRYA VIRGINIANA (AMERICAN HOPHORNBEAM), 2-1/2" CALIPER, BALLED AND BURLAPPED	EACH	1			1
+ X0322508	PEDESTRIAN TRUSS SUPERSTRUCTURE	SQ FT	1,424	1,424		
X0327980	PAVEMENT MARKING REMOVAL - WATER BLASTING	SQ FT	142			142
+ X0350805	FOLD DOWN BOLLARDS	EACH	1			1
+ X4023000	TEMPORARY ACCESS (ROAD)	EACH	2	2		
+ Z0004522	HOT-MIX ASPHALT DRIVEWAY PAVEMENT, 6"	SQ YD	245			245
+ Z0013798	CONSTRUCTION LAYOUT	L SUM	1			1
+ Z0030850	TEMPORARY INFORMATION SIGNING	SQ FT	52			52
+ Z0046304	PIPE UNDERDRAINS FOR STRUCTURES 4"	FOOT	148	148		

△

△ SPECIALTY ITEM + SPECIAL PROVISIONS

FILE NAME = S:\JUL\6408--6499\6437\02\Drawings\CAD\Miscos\CADD_Sheets\12315-ah-500.dgn



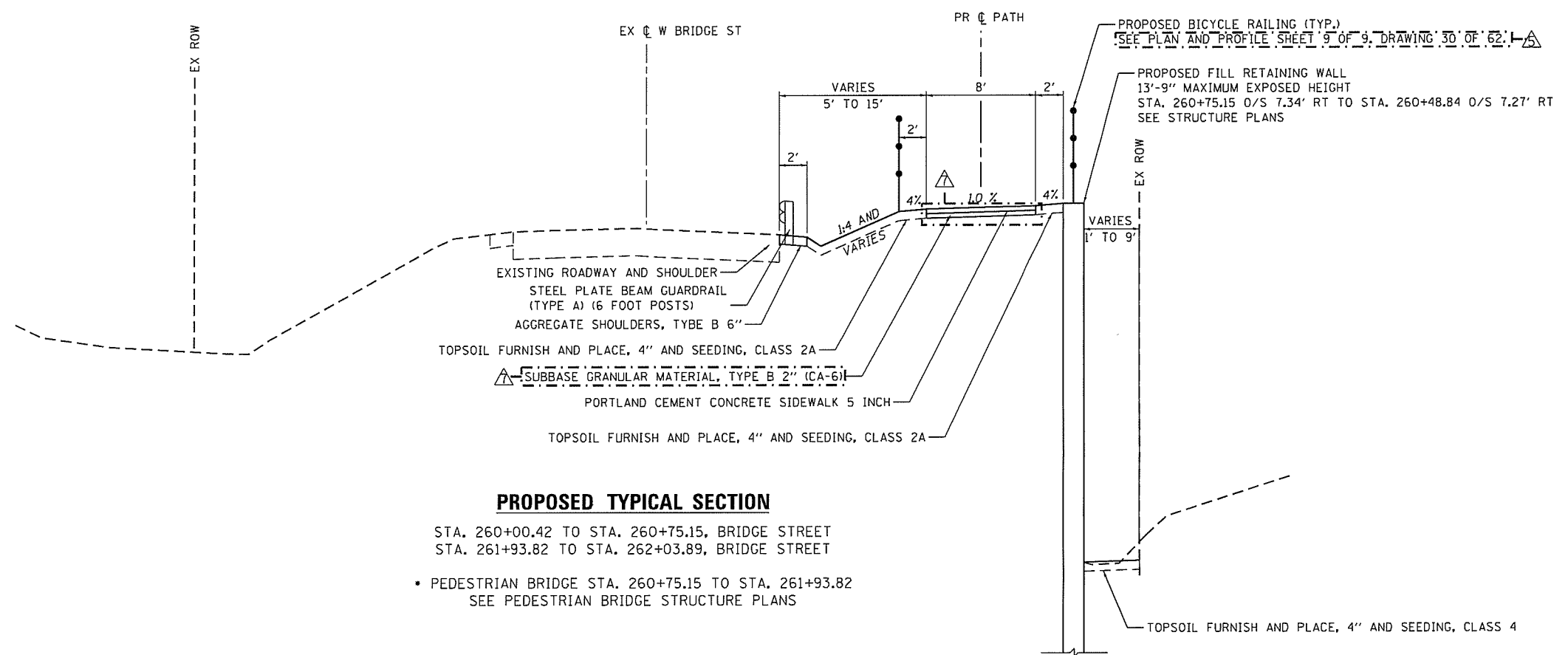
1170 SOUTH HOUBOLT ROAD JOLIET, ILLINOIS 60431 (815) 744-4200	USER NAME = JakeSo MODEL NAME = Default PLOT SCALE = 2.0000 ' / in. PLOT DATE = 7/25/2019	DESIGNED - DRAWN - CHECKED - DATE - 7/25/2019	REVISED - 9/07/24/2019 REVISED - REVISED - REVISED -
---	--	--	---

STATE OF ILLINOIS
DEPARTMENT OF TRANSPORTATION

SUMMARY OF QUANTITIES

SCALE: SHEET 5 OF 6 SHEETS STA. TO STA.

F.A.U. RTE. 392	SECTION 15-00024-00-BT	COUNTY WILL	TOTAL SHEETS 62	SHEET NO. 9
ILLINOIS FED. AID PROJECT CONTRACT NO. 61F18				



PROPOSED TYPICAL SECTION

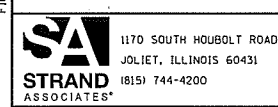
STA. 260+00.42 TO STA. 260+75.15, BRIDGE STREET
 STA. 261+93.82 TO STA. 262+03.89, BRIDGE STREET
 • PEDESTRIAN BRIDGE STA. 260+75.15 TO STA. 261+93.82
 SEE PEDESTRIAN BRIDGE STRUCTURE PLANS

PROPOSED BICYCLE RAILING (TYP.)
 SEE PLAN AND PROFILE SHEET 9 OF 9, DRAWING 30 OF 62, I-55
 PROPOSED FILL RETAINING WALL
 13'-9" MAXIMUM EXPOSED HEIGHT
 STA. 260+75.15 O/S 7.34' RT TO STA. 260+48.84 O/S 7.27' RT
 SEE STRUCTURE PLANS

TOPSOIL FURNISH AND PLACE, 4" AND SEEDING, CLASS 4

• CROSS SLOPE VARIES BETWEEN 1.5% AND -1.5%.
 SEE PLAN AND PROFILE AND CROSS SECTIONS
 FOR MORE INFORMATION.

FILE NAME = S:\JOLI\64009--6499\6437\102\Drawings\CAD\Misc\CADD_Sheets\0812345-shr-typical.dgn



USER NAME = JakeSc	DESIGNED -	REVISED - A/07/22/2019
MODEL NAME = Default	DRAWN -	REVISED - A/07/22/2019
PLOT SCALE = 10.0000' / in.	CHECKED -	REVISED -
PLOT DATE = 7/25/2019	DATE - 7/25/2019	REVISED -

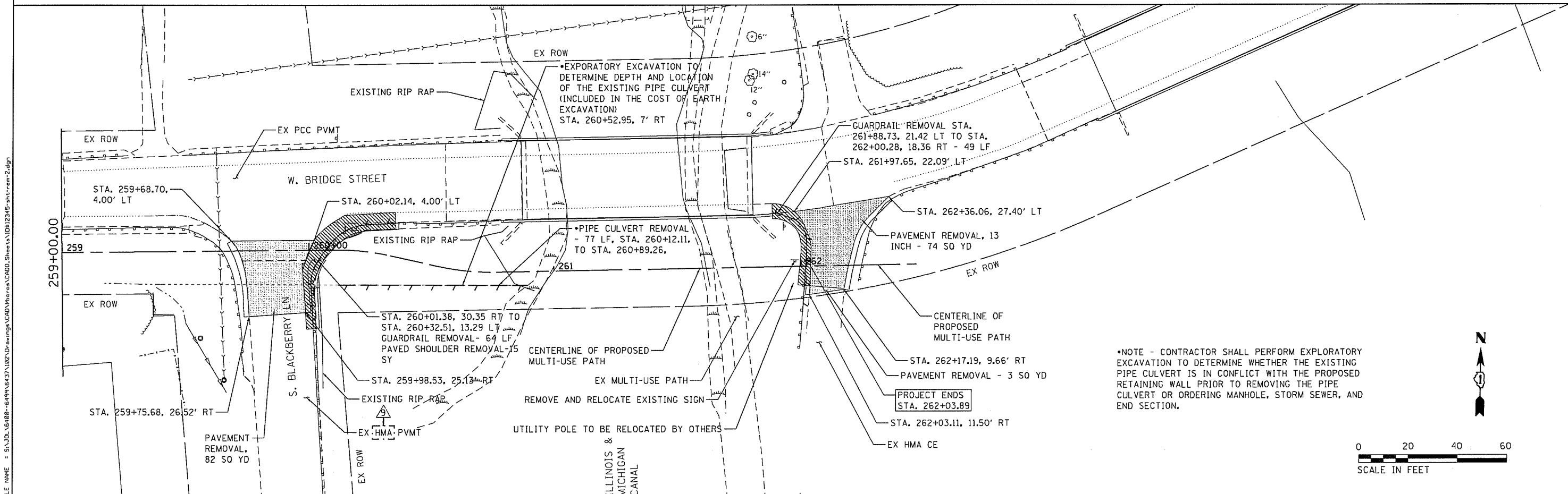
STATE OF ILLINOIS
 DEPARTMENT OF TRANSPORTATION

TYPICAL SECTIONS

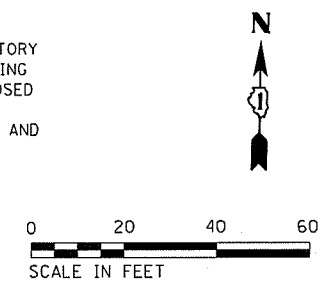
SCALE: N/A SHEET 5 OF 6 SHEETS STA. N/A TO STA. N/A

F.A.U. RTE.	SECTION	COUNTY	TOTAL SHEETS	SHEET NO.
392	15-00024-00-BT	WILL	62	14
CONTRACT NO. 61F18				
ILLINOIS FED. AID PROJECT				

TO BE LEFT BLANK



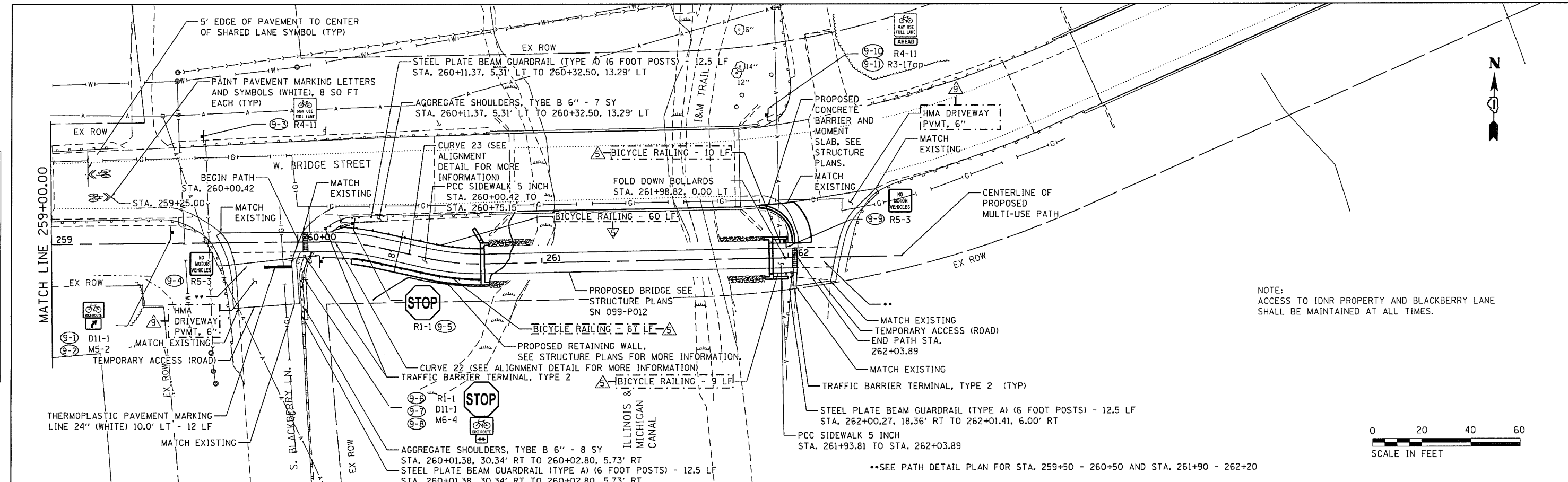
FILE NAME = SA\JOL\64008-64999\6437\102\Drawings\CADD\MicroStation\0812145-shr-rev-2.dgn



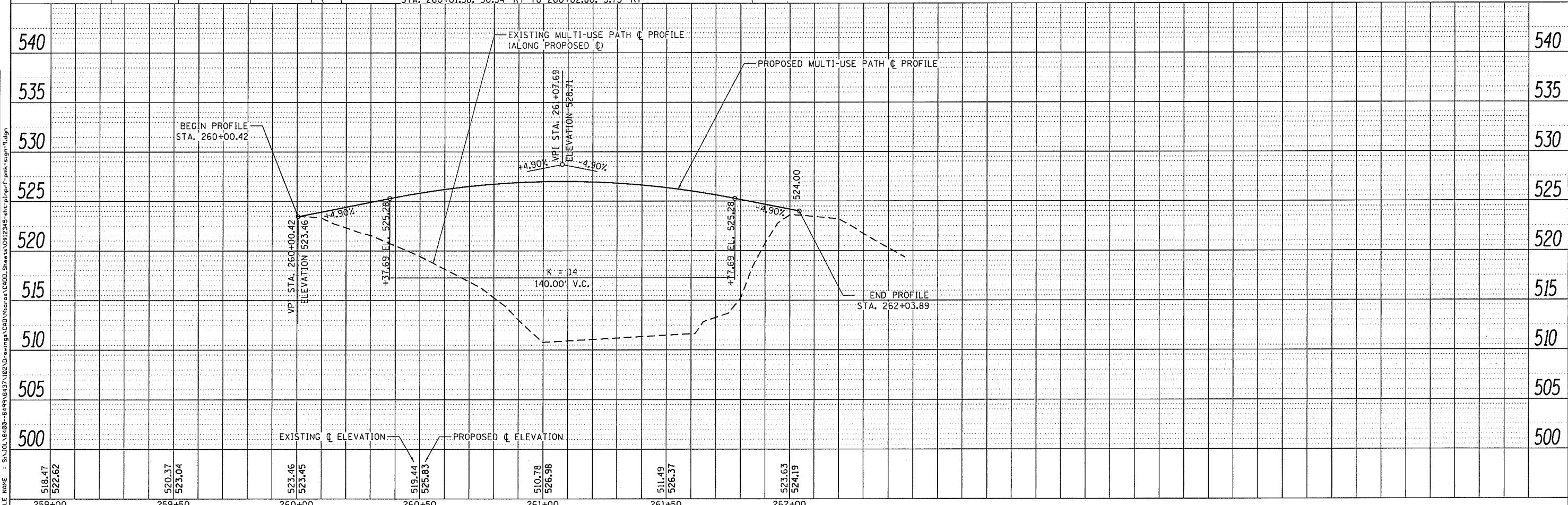
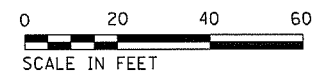
<p>1170 SOUTH HOUBOLT ROAD JOLIET, ILLINOIS 60431 18151 744-4200</p>	USER NAME = JakeSc	DESIGNED -	REVISED - 9/07/24/2019	STATE OF ILLINOIS DEPARTMENT OF TRANSPORTATION	W. BRIDGE STREET MULTIUSE PATH REMOVAL PLAN			F.A. RTE.	SECTION	COUNTY	TOTAL SHEETS	SHEET NO.
	MODEL NAME = Default	DRAWN -	REVISED -		392	15-00024-00-BT	WILL	62	21			
	PLOT SCALE = 40.0000' / in.	CHECKED -	REVISED -		CONTRACT NO. 61F18			ILLINOIS FED. AID PROJECT				
	PLOT DATE = 7/25/2019	DATE -	REVISED -		SCALE: 1" = 20'	SHEET 2	OF 2				SHEETS	STA. 223+00.00

DATE	
BY	
REVISIONS	
NO.	
DESCRIPTION	
DATE	
BY	
PLAN	
NO.	
DESCRIPTION	
DATE	
BY	

DATE	
BY	
REVISIONS	
NO.	
DESCRIPTION	
DATE	
BY	
PROFILE	
NO.	
DESCRIPTION	
DATE	
BY	



NOTE:
ACCESS TO IDNR PROPERTY AND BLACKBERRY LANE
SHALL BE MAINTAINED AT ALL TIMES.



518.47 522.62	520.37 523.04	523.46 523.45	519.44 525.83	510.78 526.98	511.49 526.37	523.63 524.19
259+00	259+50	260+00	260+50	261+00	261+50	262+00

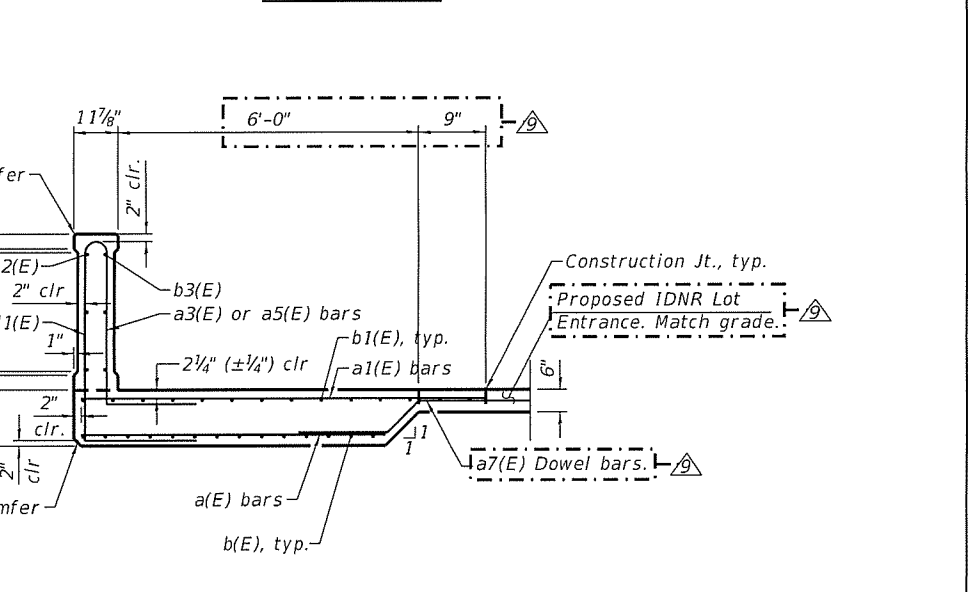
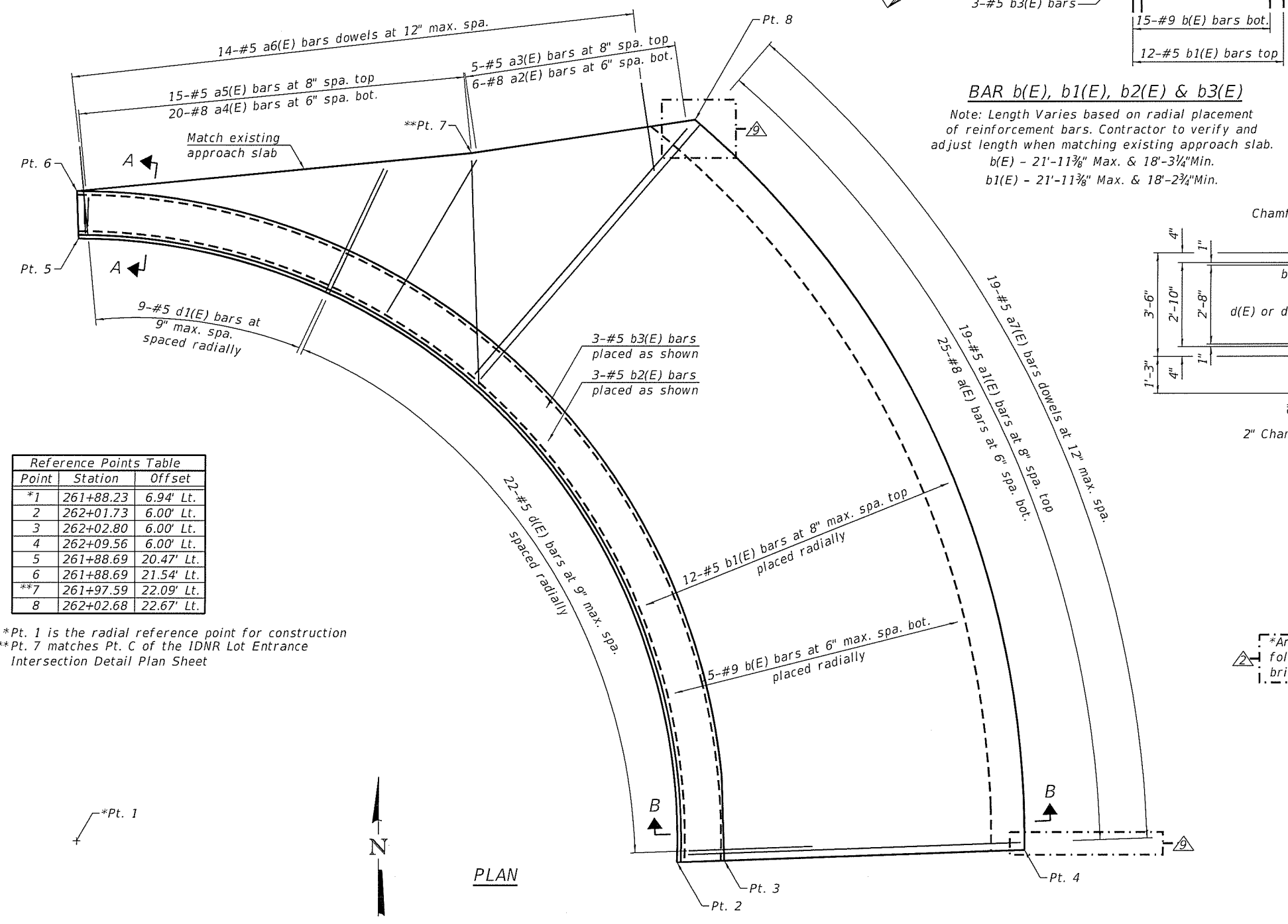
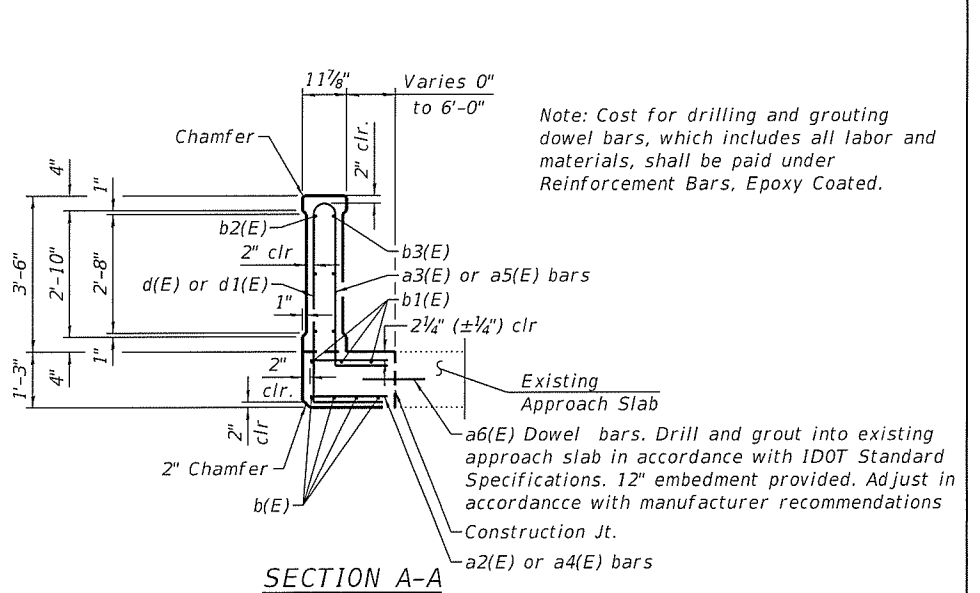
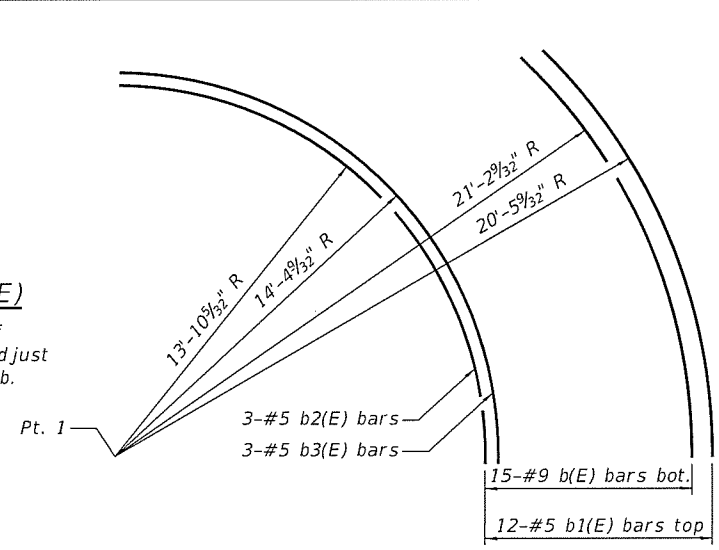
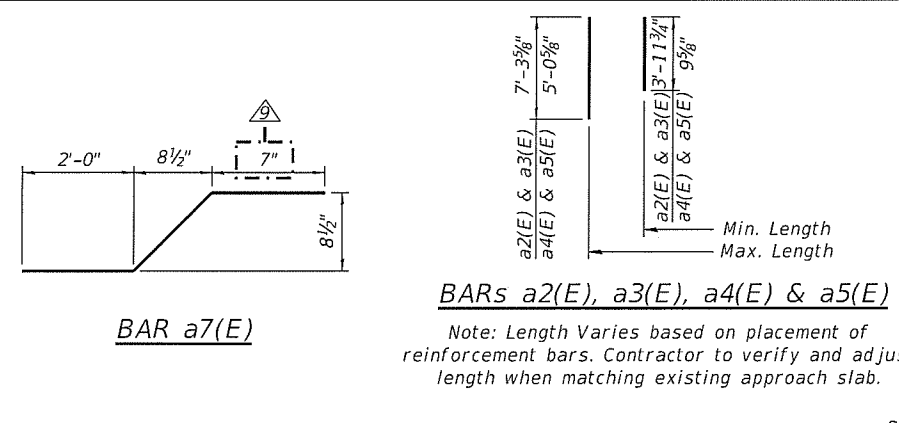
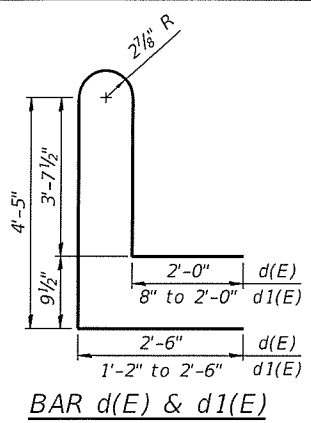
STRAND ASSOCIATES
1170 SOUTH HOUBOLT ROAD
JOLIET, ILLINOIS 60431
(815) 744-4200

USER NAME = JakeSc	DESIGNED -	REVISED - 07/22/2019
MODEL NAME = Default	DRAWN -	REVISED - 07/24/2019
PLOT SCALE = 40.0000' / in.	CHECKED -	REVISED -
PLOT DATE = 7/25/2019	DATE - 7/25/2019	REVISED -

STATE OF ILLINOIS
DEPARTMENT OF TRANSPORTATION

W. BRIDGE STREET MULTI-USE PATH
PLAN AND PROFILE, PAVEMENT MARKINGS, AND SIGNS
SCALE: 20-H 5-V SHEET 9 OF 9 SHEETS STA. 259+00.00 TO STA. 262+03.89

F.A.U. RTE. 392	SECTION 15-00024-00-BT	COUNTY WILL	TOTAL SHEETS 62	SHEET NO. 30
ILLINOIS FED. AID PROJECT			CONTRACT NO. 61F18	



Point	Station	Offset
*1	261+88.23	6.94' Lt.
2	262+01.73	6.00' Lt.
3	262+02.80	6.00' Lt.
4	262+09.56	6.00' Lt.
5	261+88.69	20.47' Lt.
6	261+88.69	21.54' Lt.
**7	261+97.59	22.09' Lt.
8	262+02.68	22.67' Lt.

*Pt. 1 is the radial reference point for construction
 **Pt. 7 matches Pt. C of the IDNR Lot Entrance Intersection Detail Plan Sheet

*Anchorage slab barrier is to follow the adjacent existing bridge parapet.

BILL OF MATERIAL

Bar	No.	Size	Length	Shape
a(E)	25	#8	7'-5"	—
a1(E)	19	#5	7'-5"	—
a2(E)	6	#8	Varies	—
a3(E)	5	#5	Varies	—
a4(E)	20	#8	Varies	—
a5(E)	15	#5	Varies	—
a6(E)	14	#5	2'-0"	—
a7(E)	19	#5	3'-7"	—
b(E)	15	#9	Varies	⌋
b1(E)	12	#5	Varies	⌋
b2(E)	3	#5	21'-11"	⌋
b3(E)	3	#5	22'-0"	⌋
d(E)	22	#5	13'-4"	⌋
d1(E)	9	#5	Varies	⌋
Structure Excavation		Cu Yd	8	
Concrete Superstructures		Cu Yd	10	
Reinforcement Bars, Epoxy Coated		Pound	12,210	
Concrete Sealer		Sq Ft	368	

FILE NAME = S:\JUL\64808-64915\102\Drawings\CAD\Misc\CADD_Sheets\999-P012-xxxx-00X-00X.dwg

	1170 SOUTH HOUBOLT ROAD JOLIET, ILLINOIS 60431 (815) 744-4200 IDFPR NO. 184-001273	USER NAME = JakeSc	DESIGNED - BRL	REVISOR - 2	DATE - 07/22/2019
		PLOT SCALE =	CHECKED - AJS	REVISOR - 3	DATE - 07/22/2019
		PLOT DATE = 7/25/2019	DRAWN - BJF	REVISOR - 8	DATE - 07/22/2019
			CHECKED - BRL	REVISOR - 9	DATE - 07/24/2019

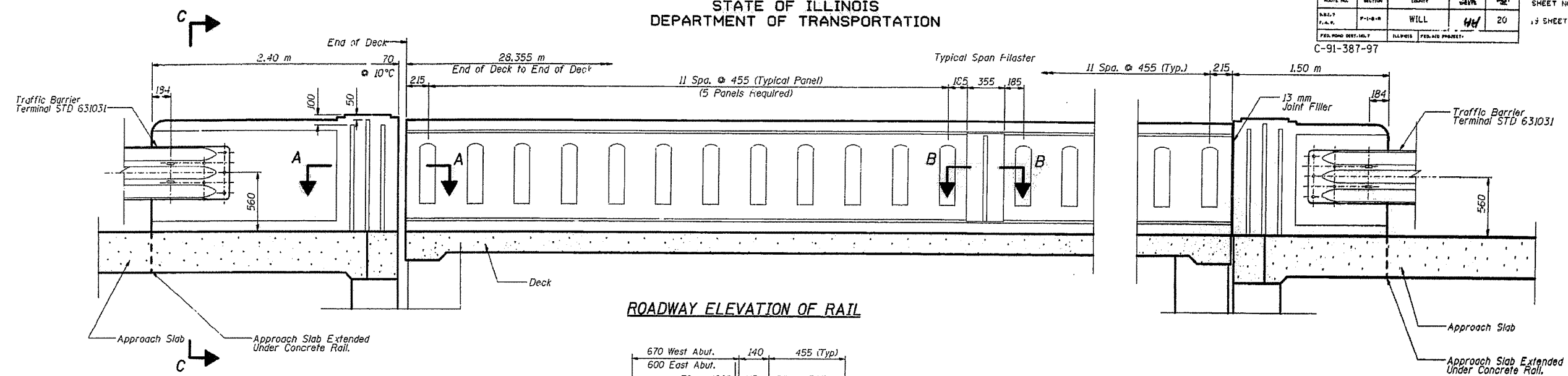
STATE OF ILLINOIS
 DEPARTMENT OF TRANSPORTATION

BARRIER AND ANCHORAGE SLAB
 AT IDNR LOT ENTRANCE
 SHEET NO. 1 OF 1 SHEETS

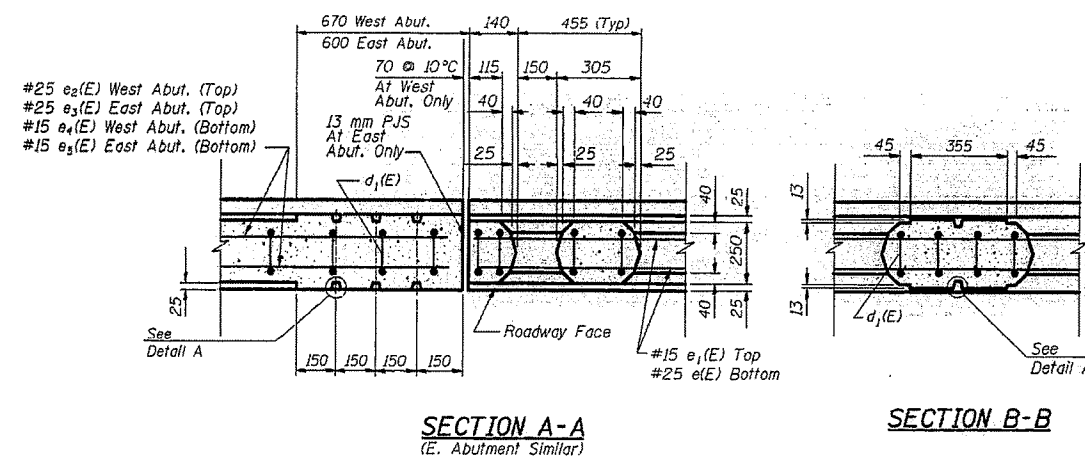
M.U.N. RTE.	SECTION	COUNTY	TOTAL SHEETS	SHEET NO.
1003	15-00024-00-BT	WILL	62	35
CONTRACT NO. 61F18			ILLINOIS FED. AID PROJECT	

STATE OF ILLINOIS
DEPARTMENT OF TRANSPORTATION

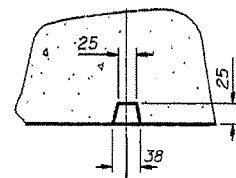
ROUTE NO.	SECTION	COUNTY	DATE	SHEET
215	F-1-B-R	WILL	11/17	20
SHEET NO. 06 OF SHEETS				
C-91-387-97				



ROADWAY ELEVATION OF RAIL

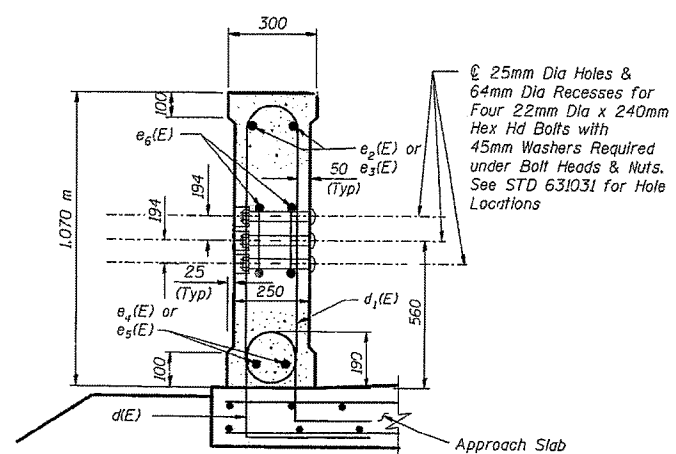


DETAIL A

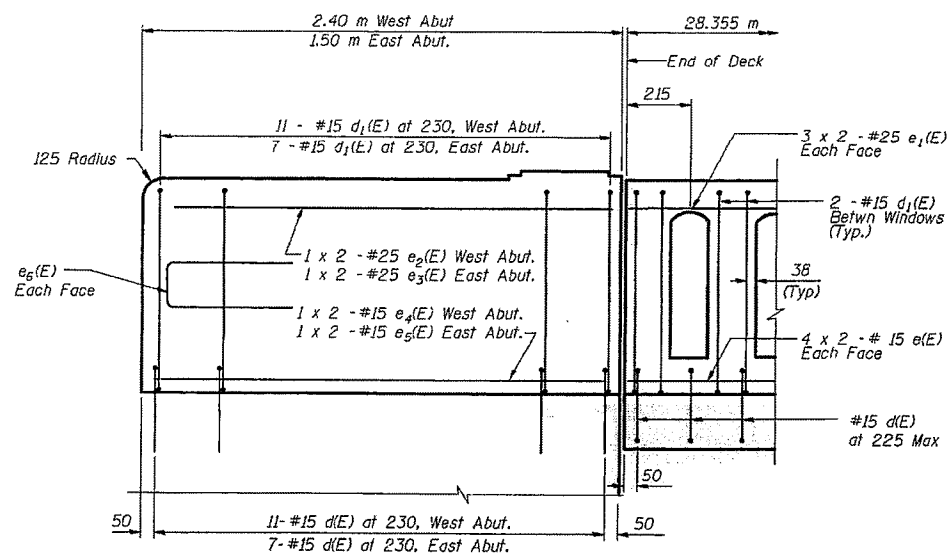


SECTION A-A
(E. Abutment Similar)

SECTION B-B



SECTION C-C



TYPICAL REINFORCING

NOTES

- Face of Rail and Parapet Shall be Vertical transversely Unless Otherwise Approved by the Engineer.
- All concrete for Railing Wall shall be Class 'SI' according to Article 1020.04 of the Standard Specifications. A Rubbed Finish Shall be Applied to All Railing Surfaces according to Article 503.16 (b) of the Standard Specifications.
- All parts of the railing, including concrete and reinforcing will be paid for at the contract unit price per meter for "Concrete Bridge Rail (Special)." Rubbed Finish incidental to "Concrete Bridge Rail (Special)."
- Shop Drawings Will Not be Required for this Rail.

REVISIONS	
NAME	DATE
JRG	9/19/00

BRIDGE STREET OVER I&M CANAL
CONCRETE BRIDGE RAIL (SPECIAL)

SCALE: NTS
SECTION: F-1-B-R
SN: 099-4612
WILL COUNTY, IL
STA: 15+633.085

DESIGNED	SJB
CHECKED	JOH
DRAWN	DJS
CHECKED	SJB

FILE NAME = S:\JDL\64808--64794\6437\102\Drawings\CADD\Misc\CADD_Sheets\9894-PDF-xxxx-08X-BANCH-35A.dgn

SA STRAND ASSOCIATES
1170 SOUTH HOUBOLT ROAD
JOLIET, ILLINOIS 60431
(815) 744-4200
IDFPR NO. 184-001273

USER NAME = JakeSc
PLOT SCALE =
PLOT DATE = 7/25/2019

DESIGNED - BRL	REVISED - 07/22/2019
CHECKED - AJS	REVISED - 07/22/2019
DRAWN - B.JF	REVISED -
CHECKED - BRL	REVISED -

ADDED SHEET

STATE OF ILLINOIS
DEPARTMENT OF TRANSPORTATION

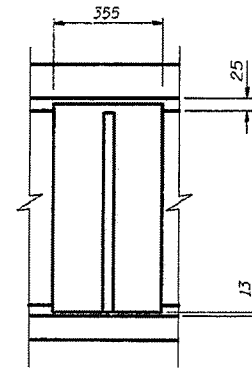
CONCRETE BRIDGE RAIL (SPECIAL)

SHEET NO. 1 OF 1 SHEETS

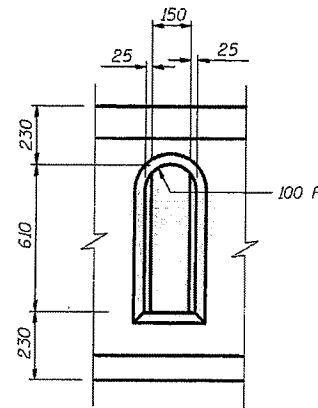
M.U.N. RTE.	SECTION	COUNTY	TOTAL SHEETS	SHEET NO.
1003	15-00024-00-BT	WILL	35	35A
CONTRACT NO. 61F18				
ILLINOIS FED. AID PROJECT				

STATE OF ILLINOIS
DEPARTMENT OF TRANSPORTATION

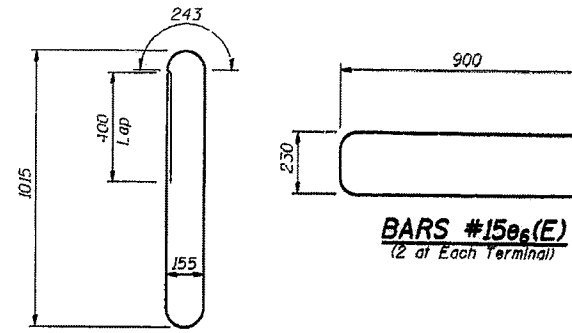
ROUTE NO.	SECTION	COUNTY	DATE	SHEET NO. OF
1003	15-00024-00-BT	WILL	07/21	19 SHEETS
C-91-387-97				



SPAN PILASTER



WINDOW



BARS #15d_v(E)

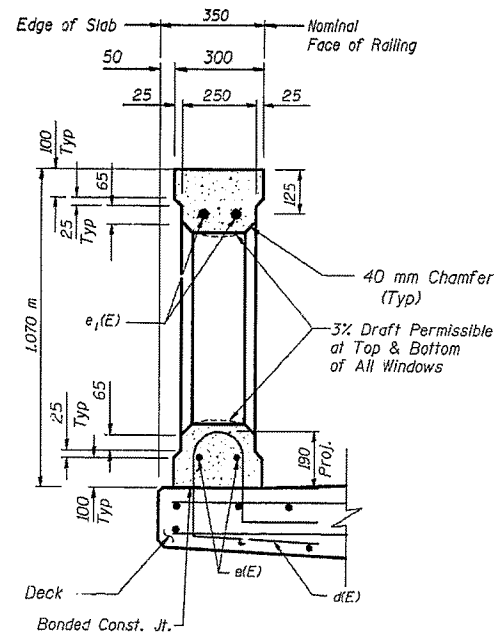
BARS #15e_s(E)
(2 at Each Terminal)

BILL OF MATERIAL*

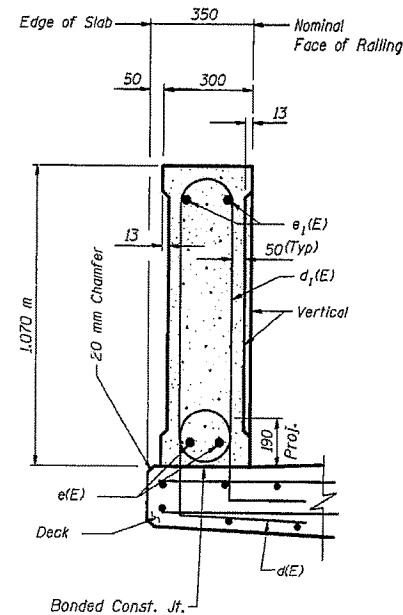
Bar	No.	Size	Length (m)	Shape
d _v (E)	284	#15	2.60	□
e(E)	15	#15	7.46	—
e ₁ (E)	12	#25	10.42	—
e ₂ (E)	4	#25	2.30	—
e ₃ (E)	4	#25	1.40	—
e ₄ (E)	4	#15	2.30	—
e ₅ (E)	4	#15	1.40	—
e ₆ (E)	8	#15	2.03	—
Reinforcement Bars		kg	1990	
Epoxy Coated				
Concrete		m ³	15.0	
Superstructure				

Reinforcement bars designated (E) shall be epoxy coated.

* For information only. The items shown in this Bill of Material are not paid for separately but are included in the cost of "Concrete Bridge Rail (Special)."



SECTION THRU WINDOW



SECTION THRU SPAN PILASTER

DESIGNED	SJB
CHECKED	RCJ
DRAWN	DJS
CHECKED	JOH

REVISIONS	
NAME	DATE

BRIDGE STREET OVER I&M CANAL
CONCRETE BRIDGE RAIL (SPECIAL)

SN: 099-4612
WILL COUNTY, IL
SCALE: NTS
SECTION: F-1-B-R
STA. 15+633.085



FILE NAME = S:\JDL\61808--6471\6437\102\Drawings\CAD\Struct\1099-P012-xxxx-08X-BANCH-35B.dgn

1170 SOUTH HOUBOLT ROAD
JOLIET, ILLINOIS 60431
1815) 744-4200
IDFPR NO. 184-001273

USER NAME = JakeSc
DESIGNED - BRL
CHECKED - BRL
DRAWN - B.JF
PLOT DATE = 7/25/2019

DESIGNED - BRL
CHECKED - BRL
DRAWN - B.JF
PLOT DATE = 7/25/2019

REVISIONS
07/22/2019
07/22/2019

STATE OF ILLINOIS
DEPARTMENT OF TRANSPORTATION

CONCRETE BRIDGE RAIL (SPECIAL)

SHEET NO. 1 OF 1 SHEETS

M.U.N. RTE.	SECTION	COUNTY	TOTAL SHEETS	SHEET NO.
1003	15-00024-00-BT	WILL	35B	35B
CONTRACT NO. 61F18				
ILLINOIS FED. AID PROJECT				

GENERAL NOTES

Fasteners shall be ASTM A325 Type 3 in unpainted areas. Bolts as specified by Pedestrian Truss Superstructure manufacturer, unless otherwise noted.
 All structural steel shall be AASHTO M 270 Grade 50W or ASTM A847 as applicable and in accordance with Section 1006 of the Standard Specifications.
 No field welding is permitted except as specified in the contract documents.
 Reinforcement bars designated (E) shall be epoxy coated.
 Bearing seat surfaces shall be constructed or adjusted to the designated elevations within a tolerance of 1/8 inch (0.01 ft.). Adjustment shall be made either by grinding the surface or by shimming the bearings.
 Layout of the slope protection system may be varied to suit ground conditions in the field as directed by the Engineer.

The Contractor shall obtain a construction permit from the Illinois Department of Natural Resources (IDNR), Office of Water Resources for any temporary construction activity placed in the water except cofferdams. This shall include the placement of material for run-arounds, causeways, etc. Any permit application by the Contractor shall refer to the IDNR 3704 Floodway Construction permit number allowing permanent construction as shown in the contract plans.

Concrete Sealer shall be applied to the designated areas of the backwalls, bridge seat, face of abutments, and wingwalls.

The Contractor shall make allowance for the deflection of forms, shrinkage and settlement of falsework, in addition to allowance for dead load deflection.
 The concrete for bridge decks finished according to Article 503.16(a) of the Standard Specifications shall be placed and compacted parallel to the skew in uniform increments along centerline of bridge.

The structural steel plates of the Bearing Assembly shall conform to the requirements of AASHTO M 270 Grade 36W.

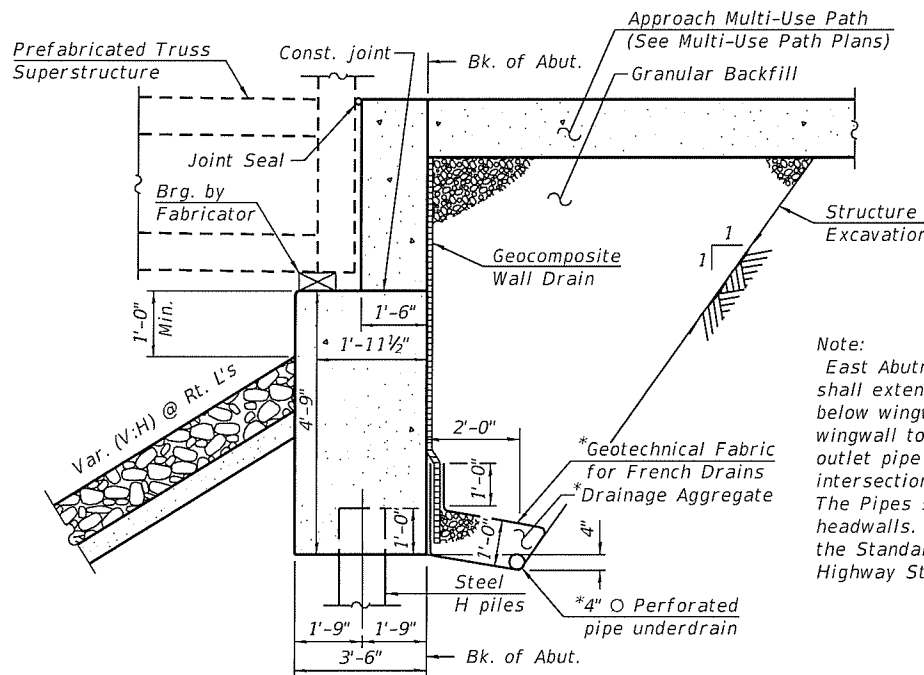
Two 1/8 in. adjusting shims shall be provided for each bearing in addition to all other plates or shims.

All (embedded and separate) bearing plates, side retainers, anchor bolts, nuts, washers and pintles shall be galvanized according to AASHTO M111 or M232 as applicable.

Backfill shall be placed behind the abutment after the superstructure has been poured and falsework removed. See Article 502.10 of the Standard Specifications.

The formliner pattern shall match the adjacent structure. See details on sheet 12 and 13 of 13. Formliner limits shall be on exposed faces of concrete substructures and wall facing and shall extend a minimum 1'-0" below finished grade. The formliner coursing on concrete facing shall be level and the formliner pattern shall be continuous across the vertical joints. Cost for concrete formliner pattern included in cost of Concrete Structures.

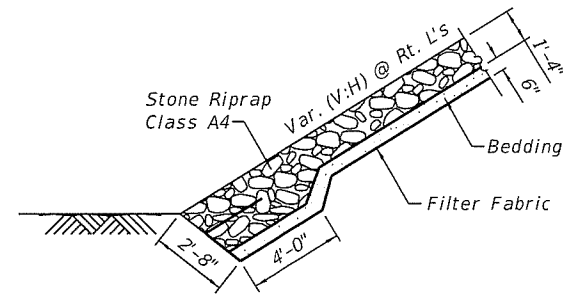
Concrete Structures shall match the existing adjacent substructure concrete in color at abutments, wingwalls, beam seats, and retaining wall facing and cap.
 Concrete Structures shall be colored in accordance with Integrally Colored Concrete.



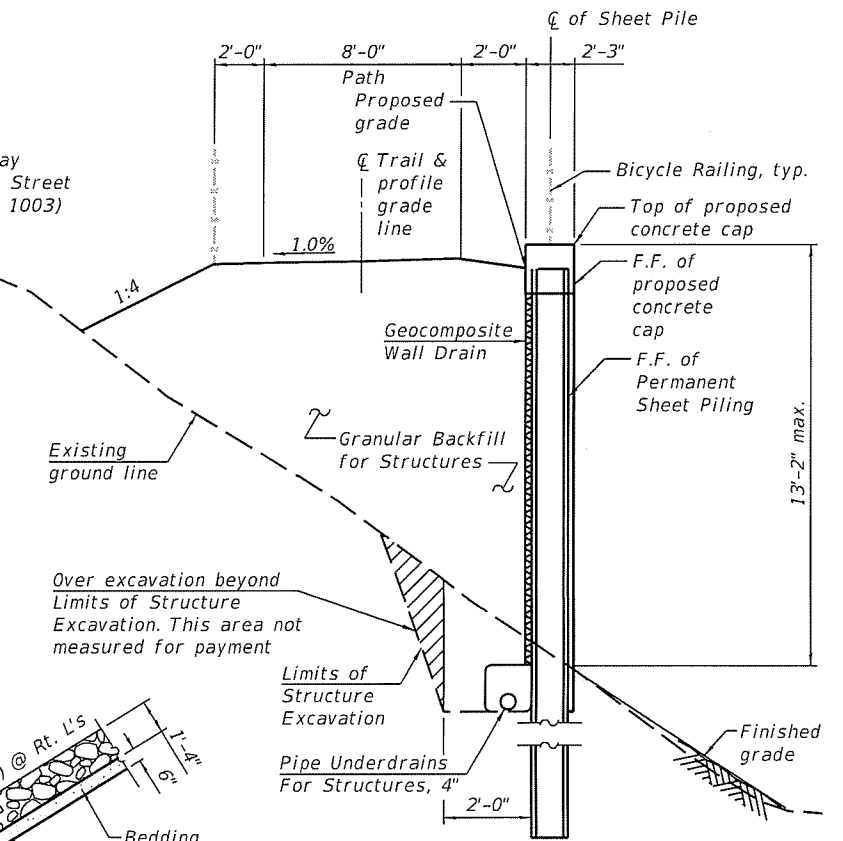
SECTION B-B
(Horiz. dim. @ Rt. L's)

*Included in the cost of Pipe Underdrains For Structures, 4" (See Special Provisions)

Note:
 East Abutment drainage components shall extend, from back of abutment below wingwall, 2'-0" from face of wingwall to a 90 degree bend. The outlet pipe shall extend until it intersects with the side slopes. The Pipes shall drain into concrete headwalls. (See Article 601.50 of the Standard Specifications and Highway Standard 601101).



STONE RIPRAP TREATMENT TOE OF SLOPE



SECTION C-C
(Looking East)

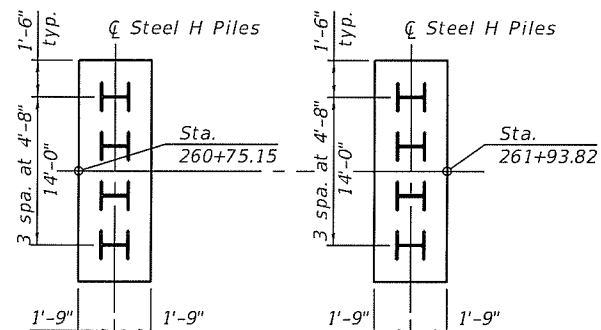
MULTI-USE PATH OVER I&M CANAL
 STA. 261+34 BUILT 201X BY
 VILLAGE OF CHANNAHON
 SEC. 15-00024-00-BT
 LOADING H10 AND 90 PSF PEDESTRIAN
 STRUCTURE NO. 099-P012

NAME PLATE
 See Std. 515001

TOTAL BILL OF MATERIAL

ITEM	UNIT	SUPER	SUB	TOTAL
Stone Riprap, Class A4	Sq Yd			81
Filter Fabric	Sq Yd			81
Structure Excavation	Cu Yd			67
Concrete Structures	Cu Yd		85	85
Concrete Superstructures	Cu Yd	26		26
Protective Coat	Sq Yd	168		168
Reinforcement Bars, Epoxy Coated	Pound			6,820
Furnishing Steel Piles HP12x53	Foot		138	138
Driving Piles	Foot		138	138
Test Pile Steel HP 12x53	Each		2	2
Pile Shoes	Each		8	8
Name Plates	Each		1	1
Permanent Sheet Piling	Sq Ft		2,187	2,187
Concrete Sealer	Sq Ft		1,626	1,626
Geocomposite Wall Drain	Sq Yd			101
Pedestrian Truss Superstructure	Sq Ft	1,424		1,424
Geotextile Retaining Wall	Sq Ft		170	170
Granular Backfill for Structures	Cu Yd			158
Pipe Underdrains for Structures 4"	Foot			148

** Concrete formliner pattern included in cost of Concrete Structures. Integrally Colored Concrete included in cost of Concrete Structures.
 For information only, 829 square feet of formliner in total is anticipated.



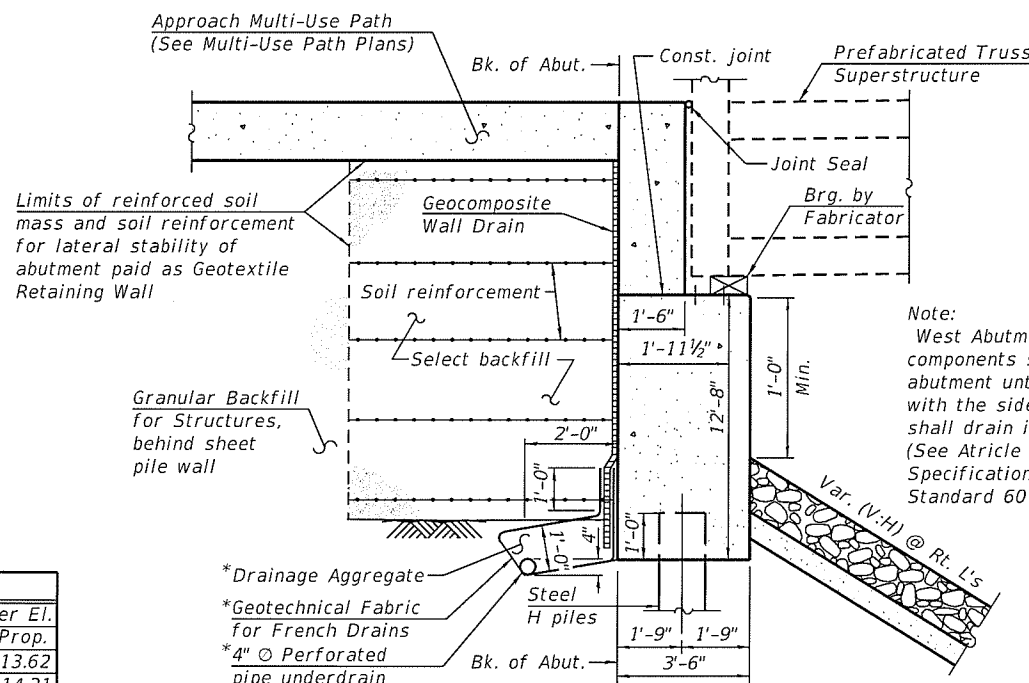
FOUNDATION LAYOUT

***WATERWAY INFORMATION**

Drainage Area = 20.0 Sq. Mi. Low Grade Elev. 525.00 @ Sta. 260+79.13

Flood	Freq. Yr.	Q C.F.S.	Opening Sq. Ft.		Nat. H.W.E.	Head - Ft.		Headwater El.	
			Exist.	Prop.		Exist.	Prop.	Exist.	Prop.
Design	50	731.01	308.92	332.60	513.62	0.0	0.0	513.62	513.62
Base	100	861.68	351.98	386.42	514.21	0.0	0.0	514.21	514.21
Overtopping									
Max. Calc.	500	1451.43	445.63	502.67	515.49	0.0	0.0	515.49	515.49

* Note: Waterway Information is from existing Roadway Bridge (S.N. 099-4612) adjacent to proposed Pedestrian Truss Superstructure.



SECTION A-A
(Horiz. dim. @ Rt. L's)

*Included in the cost of Pipe Underdrains For Structures, 4" (See Special Provisions)

10

10

10

10

10

FILE NAME = S:\JUL\6400-6495\6437\102\10-earrings\CADD\Ncras\099-P012-xxxx-002-00.dgn

SA
 1170 SOUTH HOUBOLT ROAD
 JOLIET, ILLINOIS 60431
 (815) 744-4200
 IDPR NO. 184-001273

USER NAME = JokeSc
 DESIGNED - BRL
 CHECKED - AJS
 DRAWN - BJF
 CHECKED - BRL
 PLOT SCALE =
 PLOT DATE = 7/25/2019

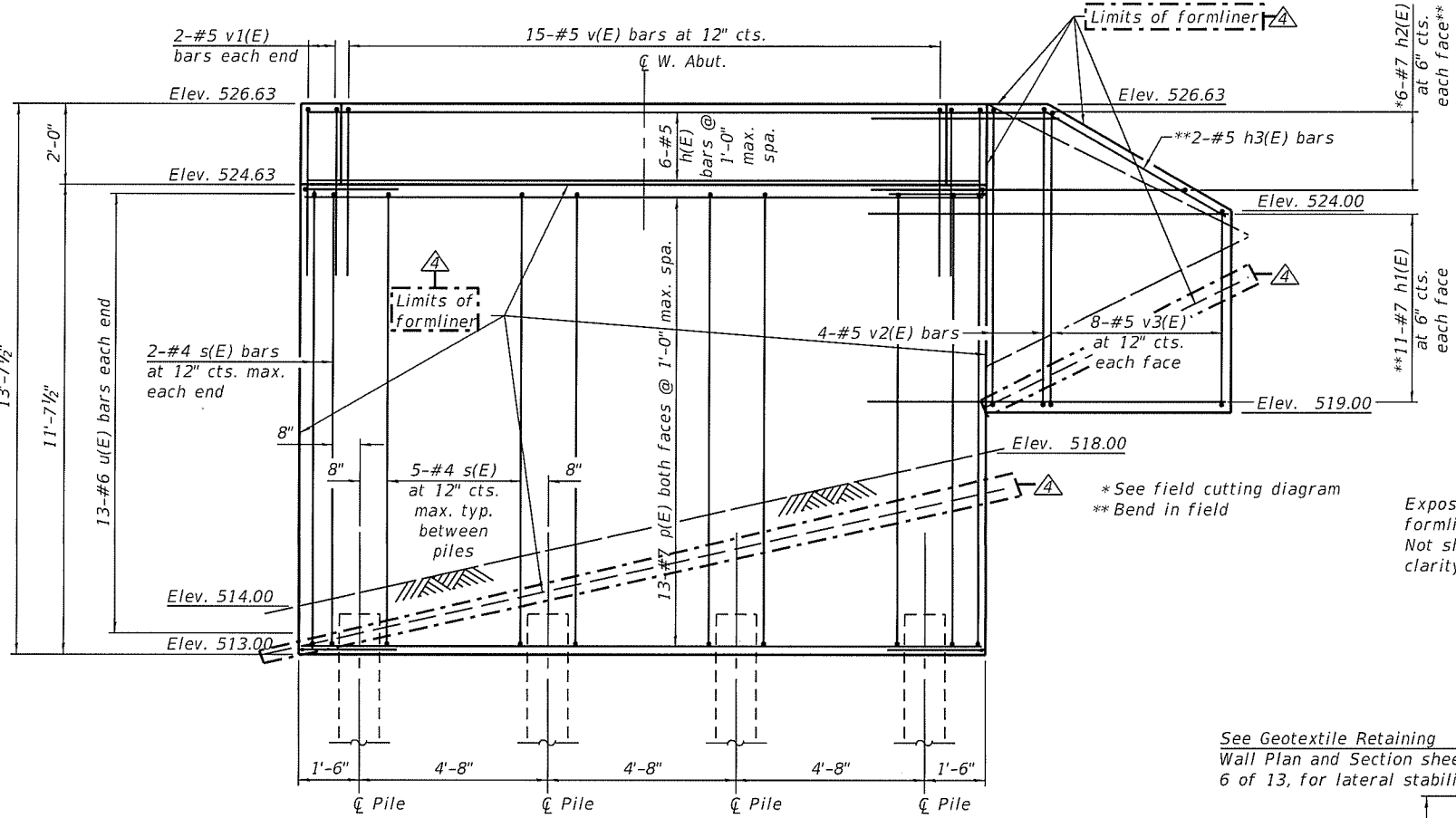
REVISIONS
 REVISED - 07/22/2019
 REVISED - 07/25/2019
 REVISED -
 REVISED -

STATE OF ILLINOIS
DEPARTMENT OF TRANSPORTATION

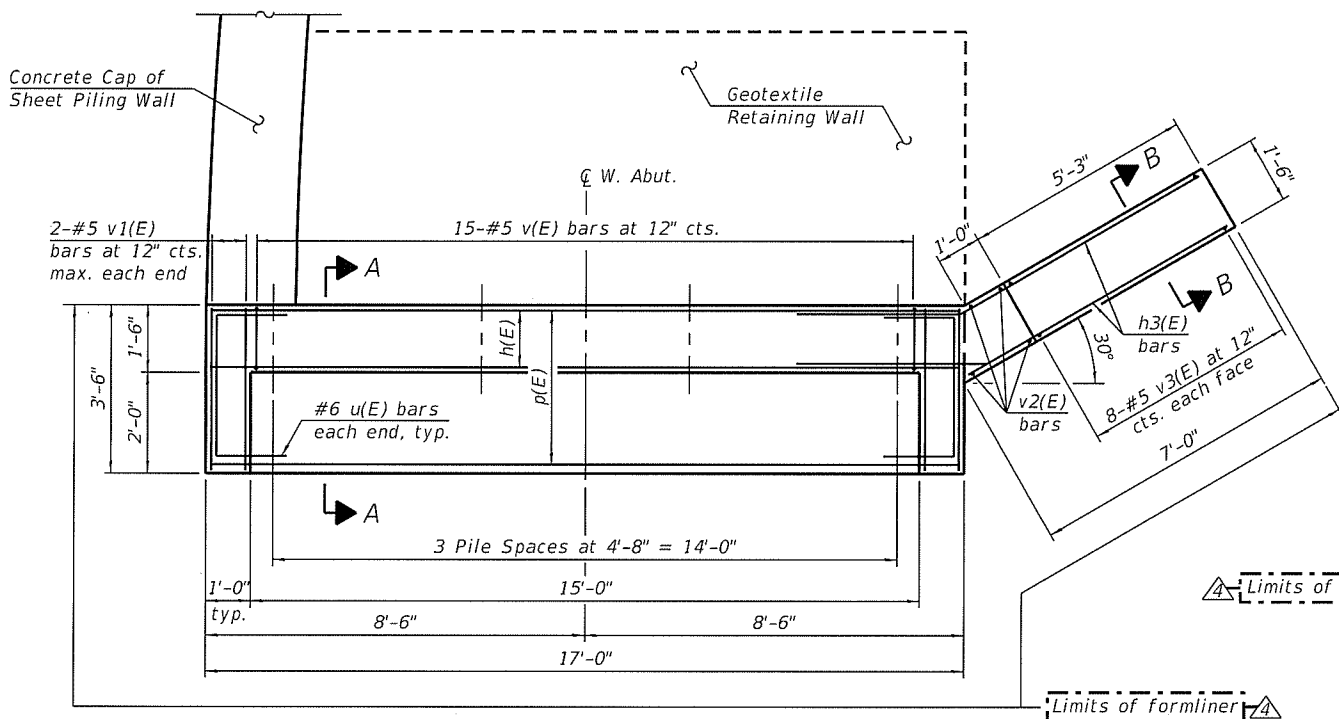
GENERAL DATA
STRUCTURE NO. 099-P012
 SHEET NO. 2 OF 13 SHEETS

M.U.N. RTE.	SECTION	COUNTY	TOTAL SHEETS	SHEET NO.
1003	15-00024-00-BT	WILL	62	40

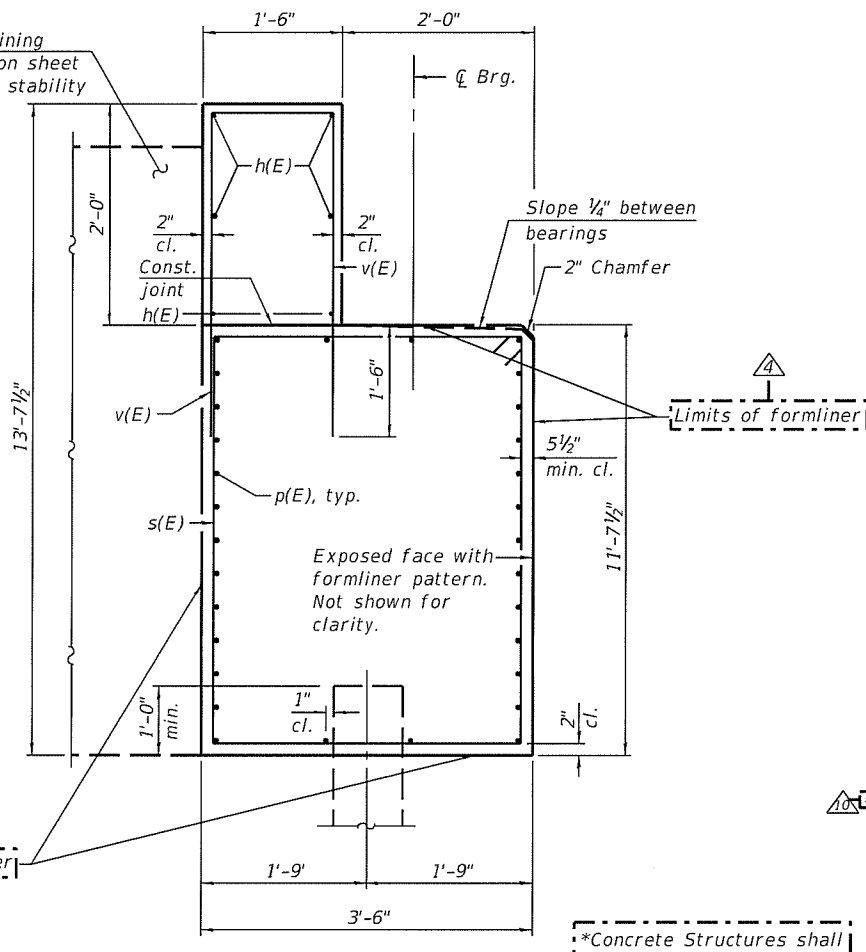
CONTRACT NO. 61F18
 ILLINOIS FED. AID PROJECT



ELEVATION
(Looking West)

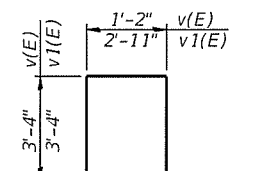
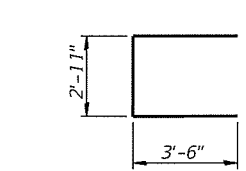
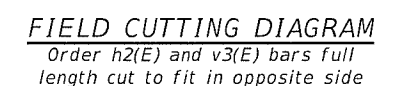


PLAN



SECTION A-A

SECTION B-B



PILE DATA
Type: HP 12x53 with pile shoes
Nominal Required Bearing: 217 kips
Factored Resistance Available: 119 kips
Est. Length: 19'-0"
No. Production Piles: 3
No. Test Piles: 1

MIN. BAR LAP
#7 bar 3'-5"

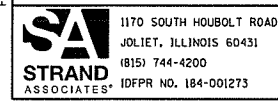
WEST ABUTMENT
BILL OF MATERIAL

Bar	No.	Size	Length	Shape
h(E)	6	#5	16'-8"	—
h1(E)	22	#7	9'-8"	—
h2(E)	6	#7	14'-1"	—
h3(E)	2	#5	10'-2"	—
p(E)	30	#7	16'-8"	—
s(E)	19	#4	29'-2"	□
u(E)	26	#6	9'-11"	U
v(E)	15	#5	7'-10"	□
v1(E)	4	#5	9'-7"	□
v2(E)	4	#5	7'-3"	—
v3(E)	6	#5	9'-7"	—
Structure Excavation		Cu Yd	18	
Concrete Structures		Cu Yd	31	
Reinforcement Bars, Epoxy Coated		Pound	2,790	
Furnishing HP12x53		Foot	57	
Driving Piles		Foot	57	
Test Pile HP 12x53		Each	1	
Pile Shoes		Each	4	
Concrete Sealer		Sq Ft	464	

*Concrete Structures shall be colored in accordance with Integrally Colored Concrete.

For details of piles, see sheet 9 of 13.
For information only, 265.0 square feet of formliner is anticipated.

FILE NAME = S:\JOL\6498--6499\6497\102\00-earrpg\CAD\Miscos\CADD\Sheets\099-P012-xxxx-204-WABUT.dgn

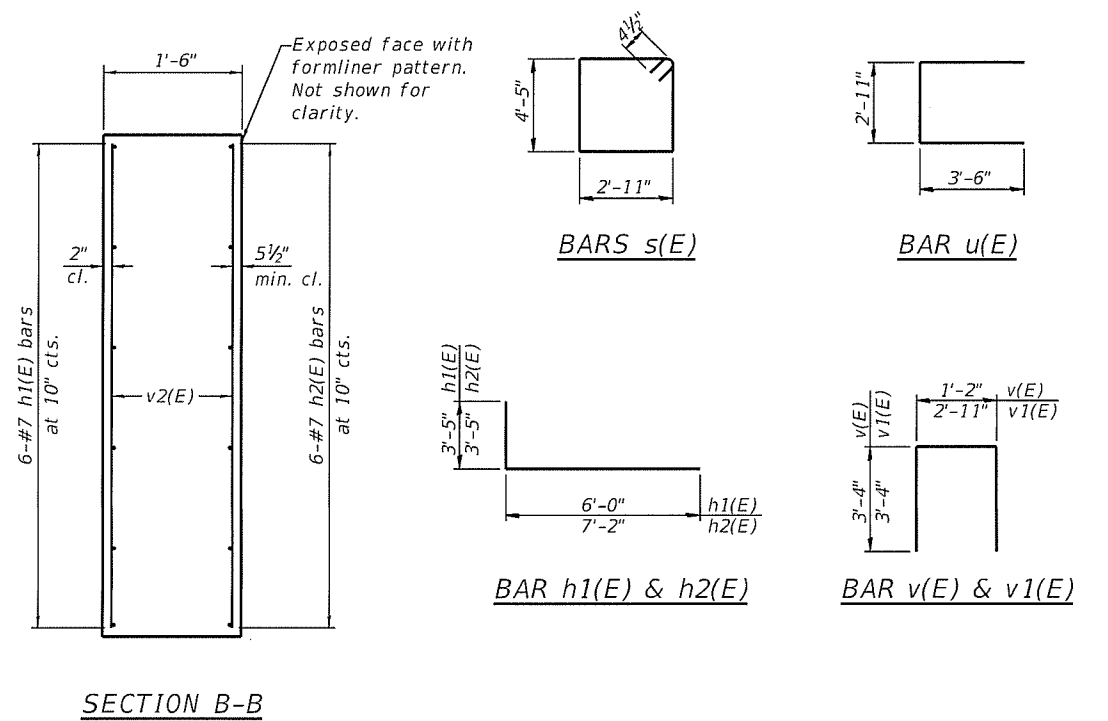
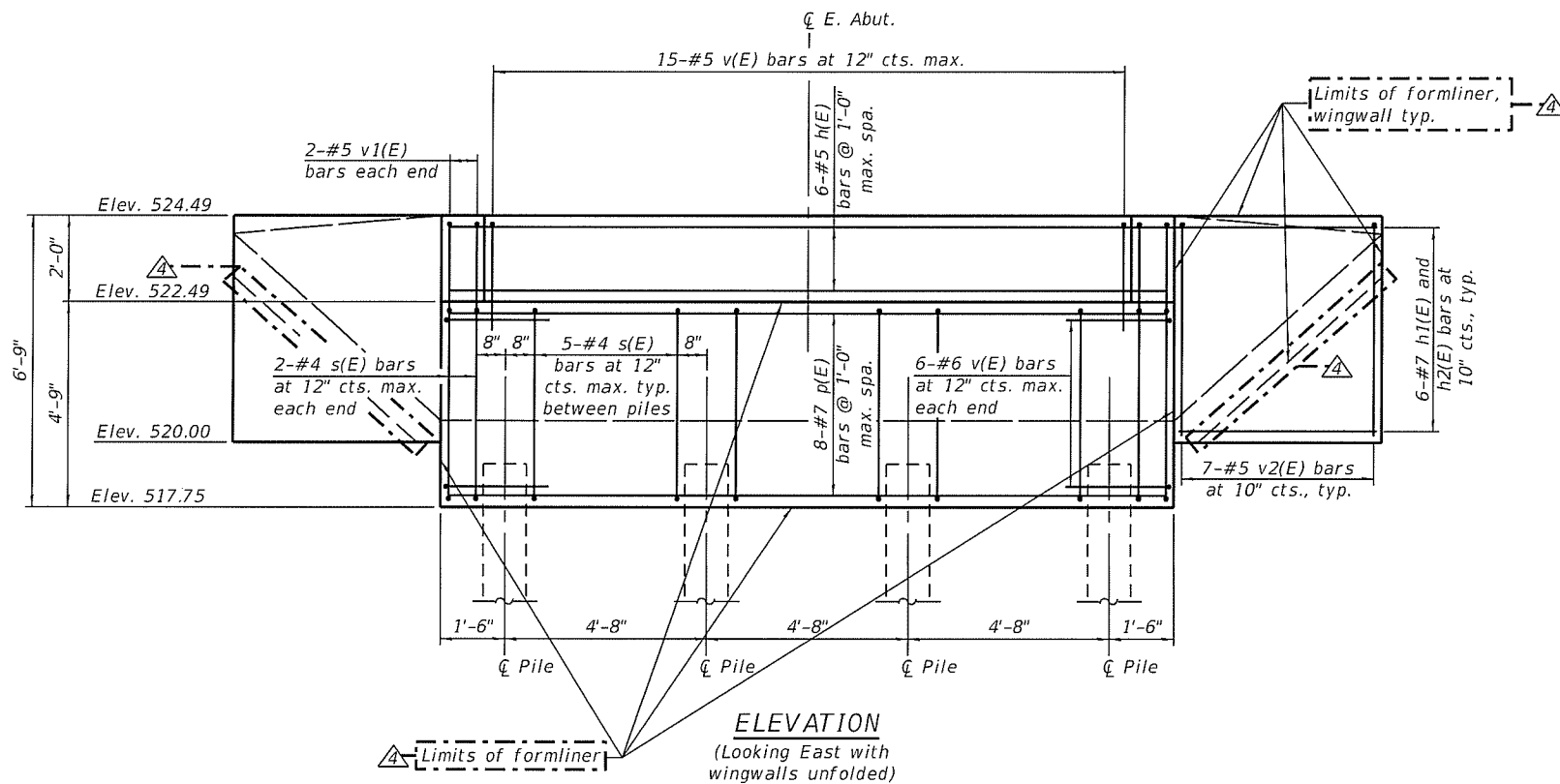


USER NAME = JakeSc	DESIGNED - BRL	REVISED - 07/22/2019
PLOT SCALE =	CHECKED - AJS	REVISED - 07/25/2019
PLOT DATE = 7/25/2019	DRAWN - BJF	REVISED -
	CHECKED - BRL	REVISED -

STATE OF ILLINOIS
DEPARTMENT OF TRANSPORTATION

WEST ABUTMENT
STRUCTURE NO. 099-P012
SHEET NO. 4 OF 13 SHEETS

M.U.N. RTE.	SECTION	COUNTY	TOTAL SHEETS	SHEET NO.
1003	15-00024-00-BT	WILL	62	42
			CONTRACT NO. 61F18	
ILLINOIS FED. AID PROJECT				

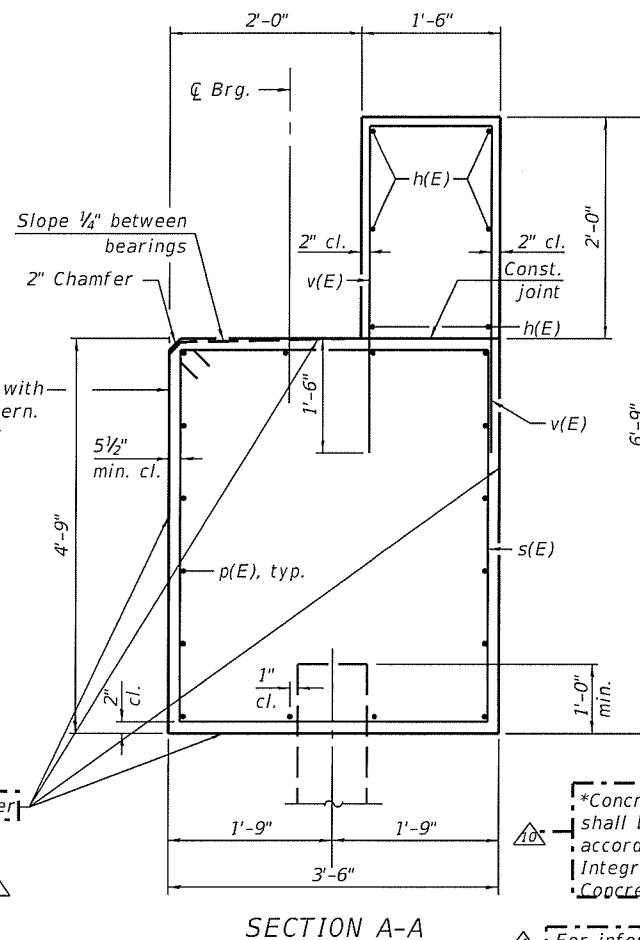
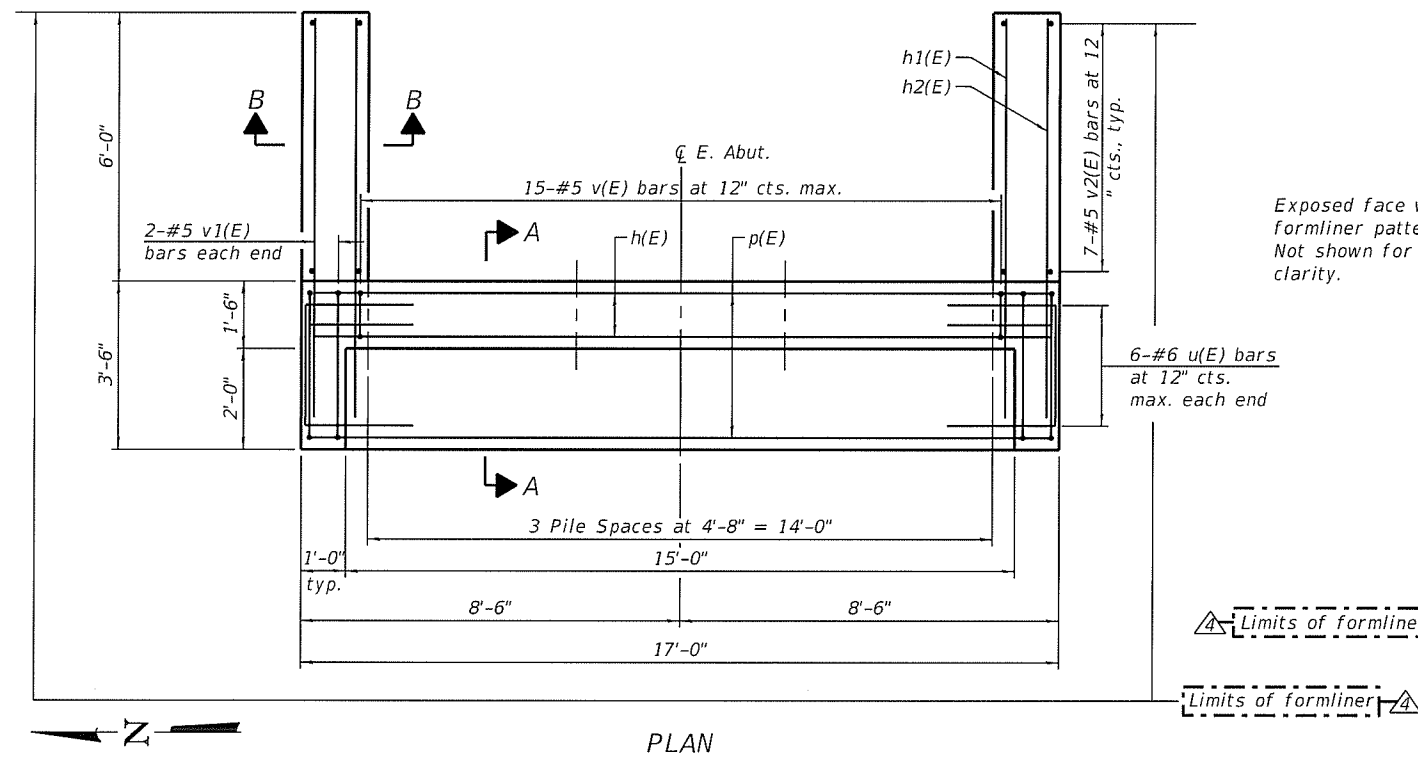


PILE DATA
 Type: HP 12x53 with pile shoes
 Nominal Required Bearing: 219 kips
 Factored Resistance Available: 121 kips
 Est. Length: 27'-0"
 No. Production Piles: 3
 No. Test Piles: 1

MIN. BAR LAP
 #7 bar 3'-5"

**EAST ABUTMENT
 BILL OF MATERIAL**

Bar	No.	Size	Length	Shape
h(E)	6	#5	16'-8"	—
h1(E)	12	#7	9'-3"	—
h2(E)	12	#7	10'-5"	—
p(E)	16	#7	16'-8"	—
s(E)	19	#4	15'-5"	□
u(E)	12	#6	9'-11"	—
v(E)	15	#5	7'-10"	□
v1(E)	4	#5	9'-7"	□
v2(E)	14	#5	4'-5"	—
Structure Excavation		Cu Yd	15	
Concrete Structures		Cu Yd	16	
Reinforcement Bars, Epoxy Coated		Pound	1,750	
Furnishing HP12x53		Foot	81	
Driving Piles		Foot	81	
Test Pile HP12x53		Each	1	
Pile Shoes		Each	4	
Concrete Sealer		Sq Ft	275	



*Concrete Structures shall be colored in accordance with Integrally Colored Concrete.

For details of piles, see sheet 9 of 13.
 For information only, 159.0 square feet of formliner is anticipated.

FILE NAME = S:\JDL\6408-6495\6437\102\10-arings\CAD\Micros\CADD_Sheets\BPP1-PO12-xxxx-005-EABUT.dgn

SA STRAND ASSOCIATES
 1170 SOUTH HOUBOLT ROAD
 JOLIET, ILLINOIS 60431
 (815) 744-4200
 10FFR NO. 184-001273

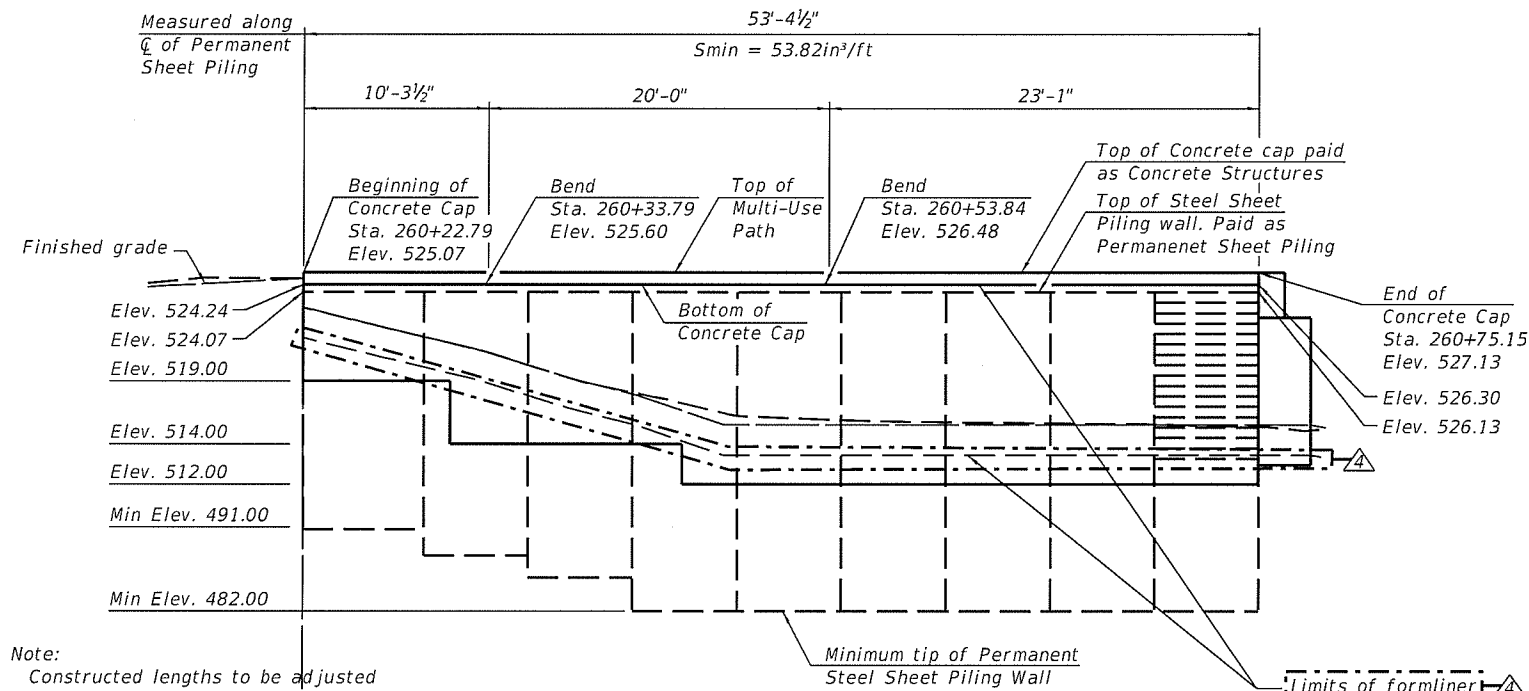
USER NAME = JakeSc
 DESIGNED - BRL
 CHECKED - AJS
 DRAWN - BJF
 CHECKED - BRL
 PLOT SCALE =
 PLOT DATE = 7/25/2019

DESIGNED - BRL
 CHECKED - AJS
 DRAWN - BJF
 CHECKED - BRL
 REVISIONS:
 1. 07/22/2019
 2. 07/25/2019

**STATE OF ILLINOIS
 DEPARTMENT OF TRANSPORTATION**

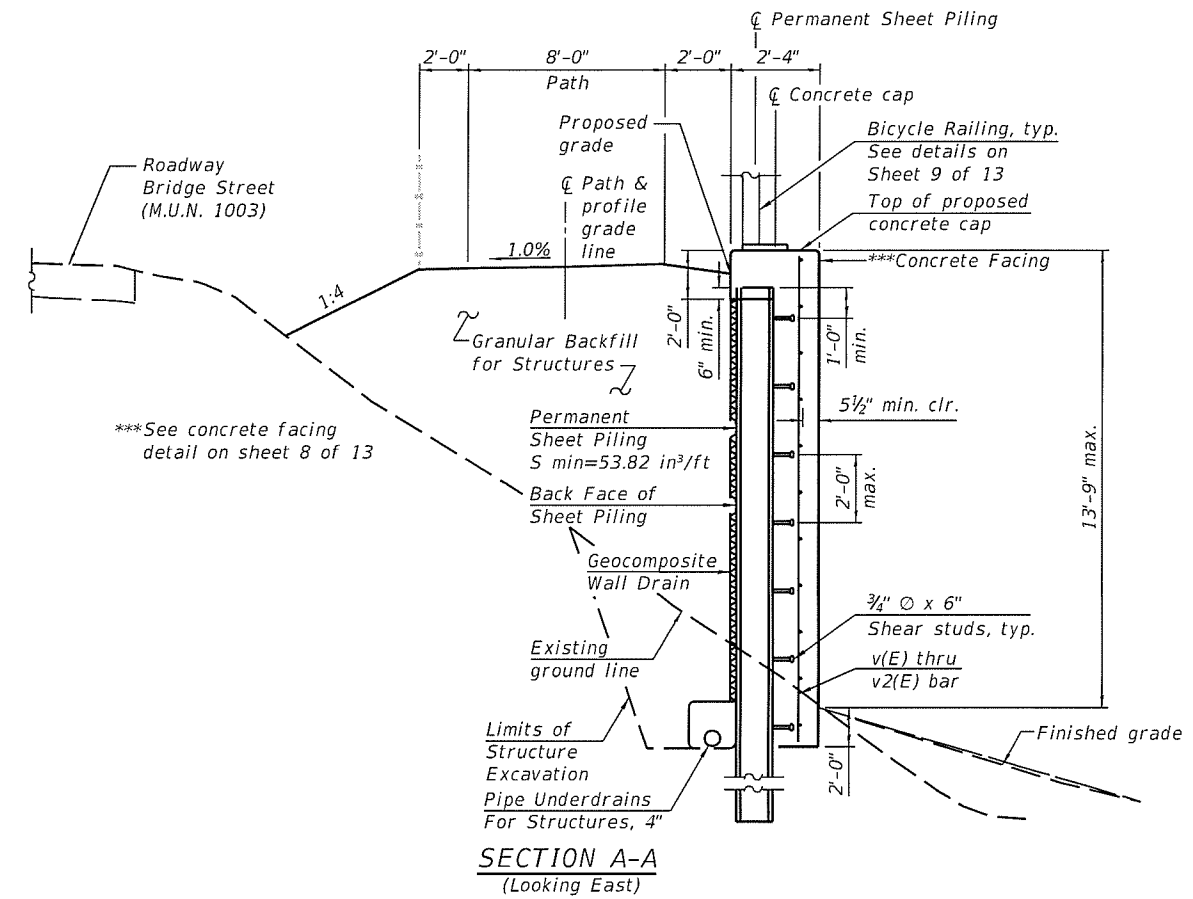
**EAST ABUTMENT
 STRUCTURE NO. 099-P012**
 SHEET NO. 5 OF 13 SHEETS

M.I.N. RTE.	SECTION	COUNTY	TOTAL SHEETS	SHEET NO.
1003	15-00024-00-BT	WILL	62	43
			CONTRACT NO. 61F18	
ILLINOIS FED. AID PROJECT				

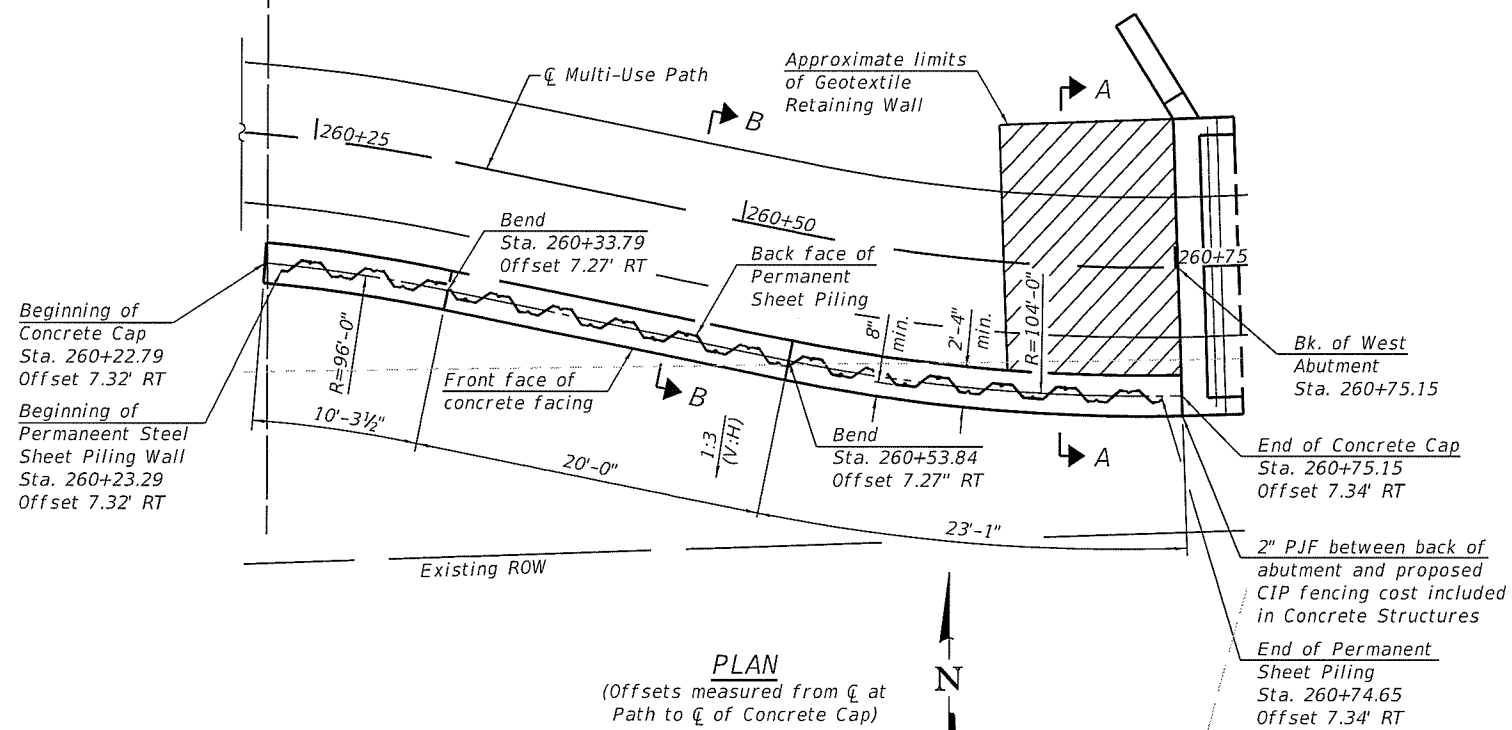


Note:
Constructed lengths to be adjusted based on actual sheet pile sizes.

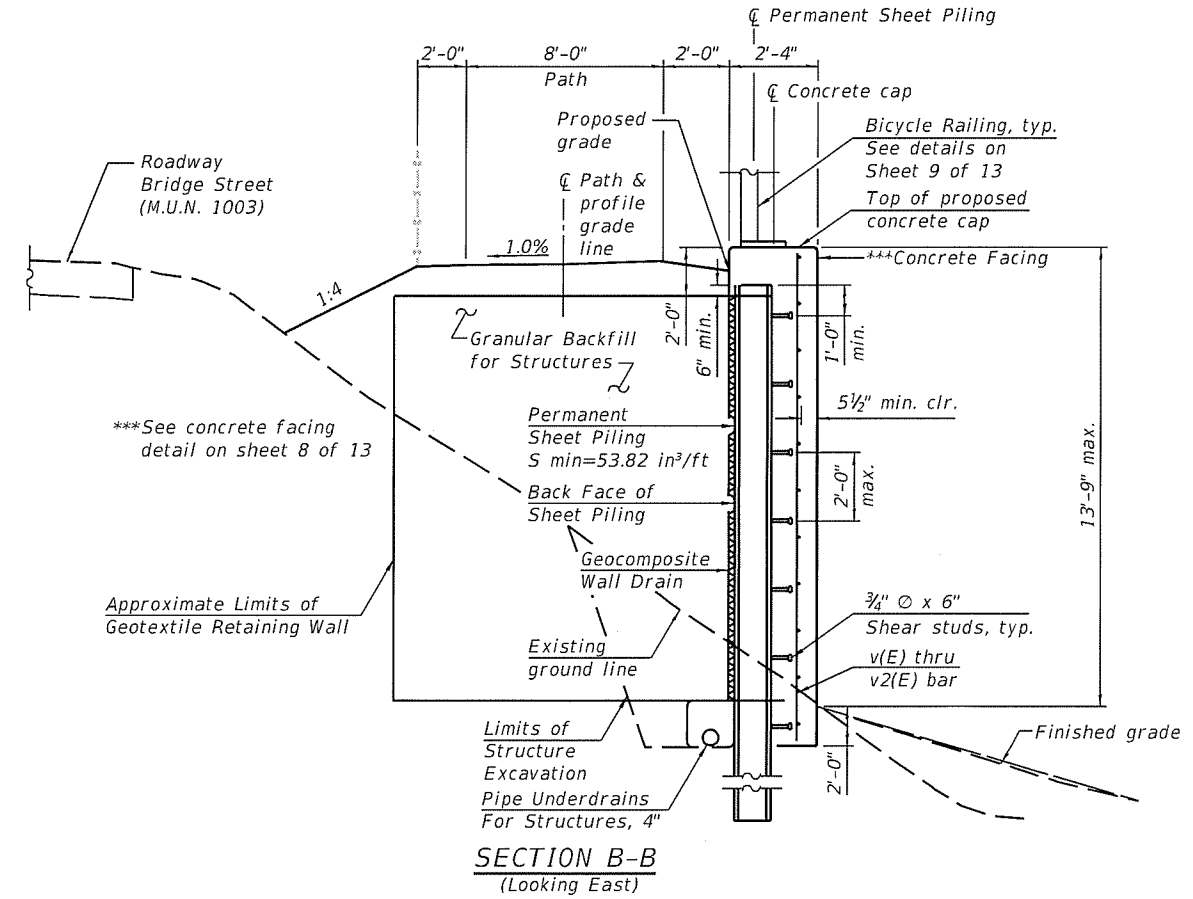
ELEVATION
(Rotated into view)



SECTION A-A
(Looking East)

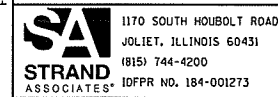


PLAN
(Offsets measured from C of Path to C of Concrete Cap)



SECTION B-B
(Looking East)

FILE NAME = S:\JDL\6440-6449\6437\102\UD-ewings\CAD\Microsp\012-xxxx-207-Wall.dgn

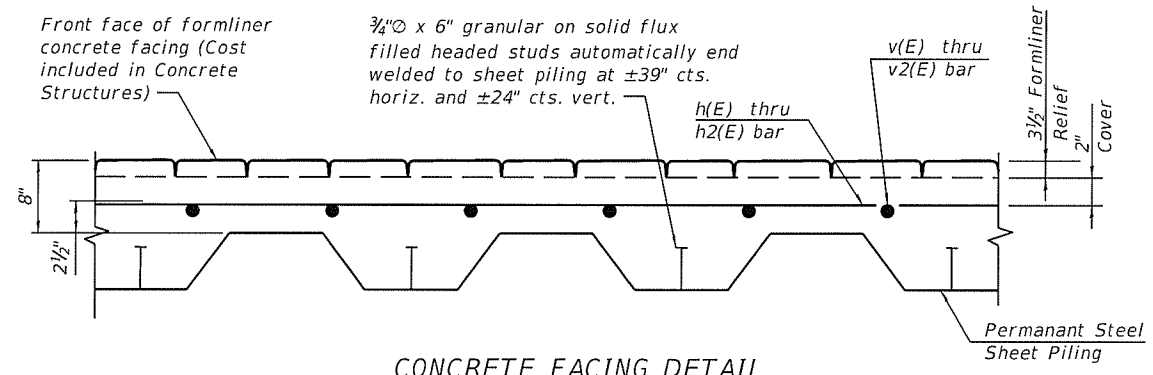


USER NAME = JakeSc	DESIGNED - BRL	REVISED - 07/22/2019
PLOT SCALE =	CHECKED - AJS	REVISED -
PLOT DATE = 7/25/2019	DRAWN - BJF	REVISED -
	CHECKED - BRL	REVISED -

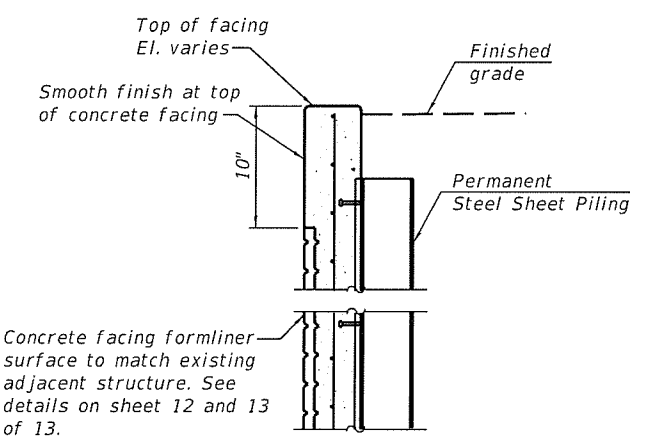
STATE OF ILLINOIS
DEPARTMENT OF TRANSPORTATION

WALL
STRUCTURE NO. 099-P012
SHEET NO. 7 OF 13 SHEETS

M.U.N. RTE. 1003	SECTION 15-00024-00-BT	COUNTY WILL	TOTAL SHEETS 62	SHEET NO. 45
CONTRACT NO. 61F18			ILLINOIS FED. AID PROJECT	



CONCRETE FACING DETAIL



CONCRETE FACING FORM LINER SECTION

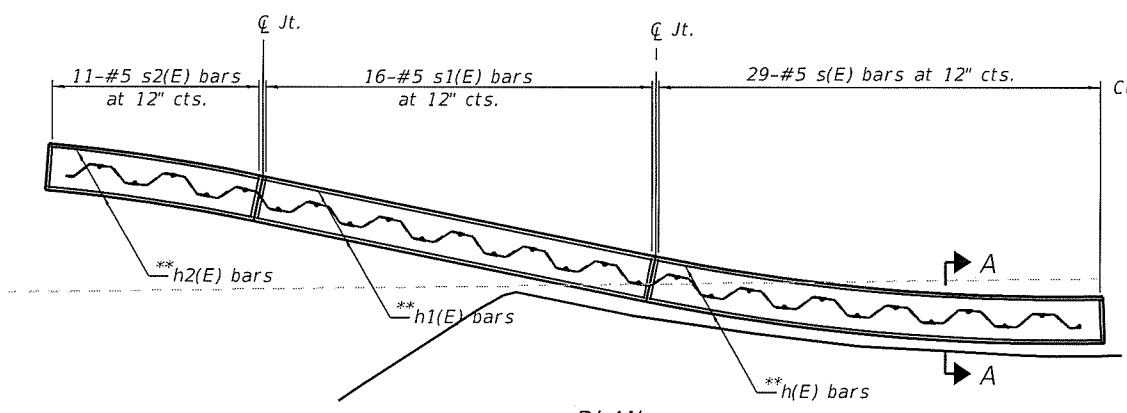
Not to Scale

GENERAL NOTES

All concrete work shall be in accordance with section 503 of the Standard Specifications. All reinforcement bars designated (E) shall be epoxy coated and shall be in accordance with section 508 of the standard specifications. Reinforcement shall have a minimum concrete cover of 2". Concrete Sealer shall be applied to the exposed faces of the concrete cap and concrete wall facing. Shear Studs shall be in accordance with section 505 of the Standard Specifications. 2" P/JF per Article 1051.08 of the Standard Specifications full height bonded to west abutment with suitable adhesive as recommended by supplier. Cost of shear connectors (Granular or flux filled stud), cement nails, and #2" premolded joint filler is included in the cost of Concrete Structures.

The formliner pattern shall be continuous across the vertical wall joints. The formliner coursing on concrete facing shall be level. The formliner limits shall extend 1'-0" below finished grade. Any backfill shall be placed behind the Permanent Steel Sheet Piling prior to placement of the concrete facing.

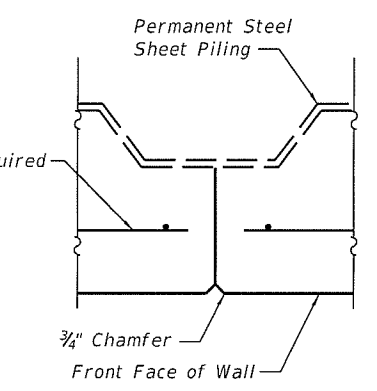
For backfilling and embankment outside Structure Excavation Limits, see Roadway Plans. Permanent Steel Sheet Piling shall meet requirements of ASTM A572 Gr.50. Permanent Steel Sheet Piling (exposed and anchor wall) shall have a required section modulus meeting or exceeding 53.82 in³/ft. If Contractor elects to use larger Permanent Steel Sheet Piling size, sheet pile concrete cap size shall increase as required to fit wall. New size shall be approved by Engineer and provided at no additional cost to contract.



PLAN

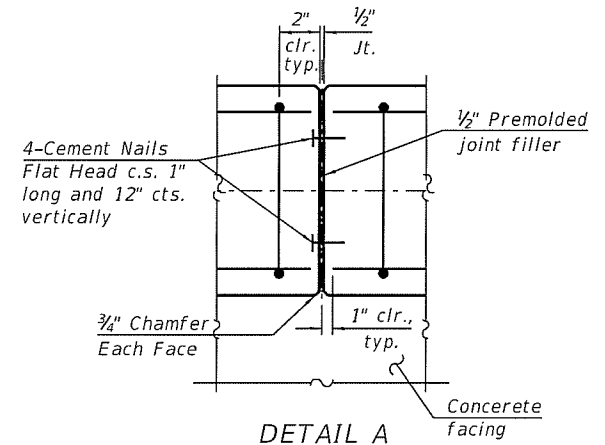
Note:
Constructed lengths to be adjusted based on actual sheet pile sizes.

** Bend in field to fit
*** Cut in field to fit

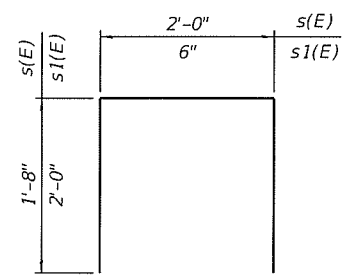


VERTICAL CONTRACTION JOINT

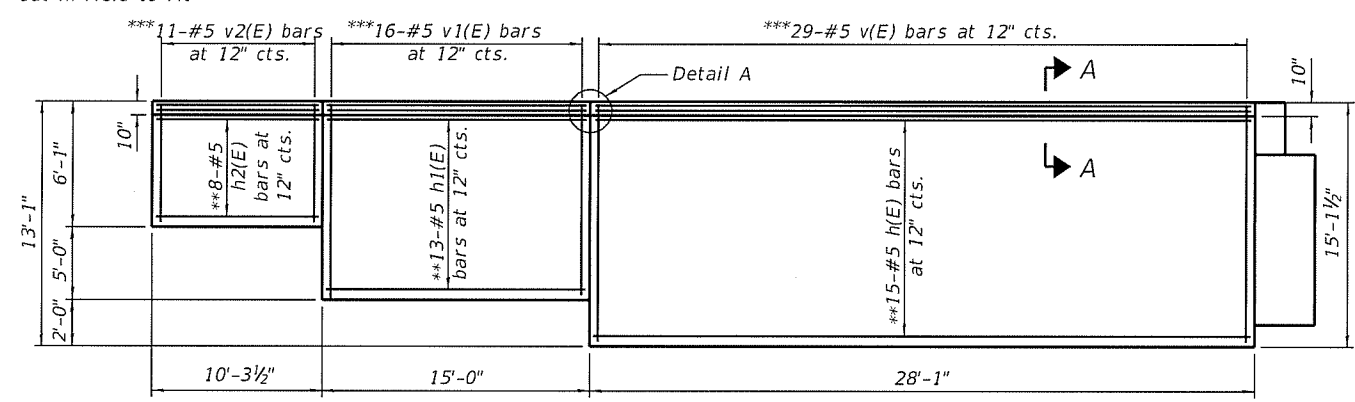
Do not run any reinforcement bars thru joint. Max. joint spacing = 30'-0". Locate joint at interlock.



DETAIL A

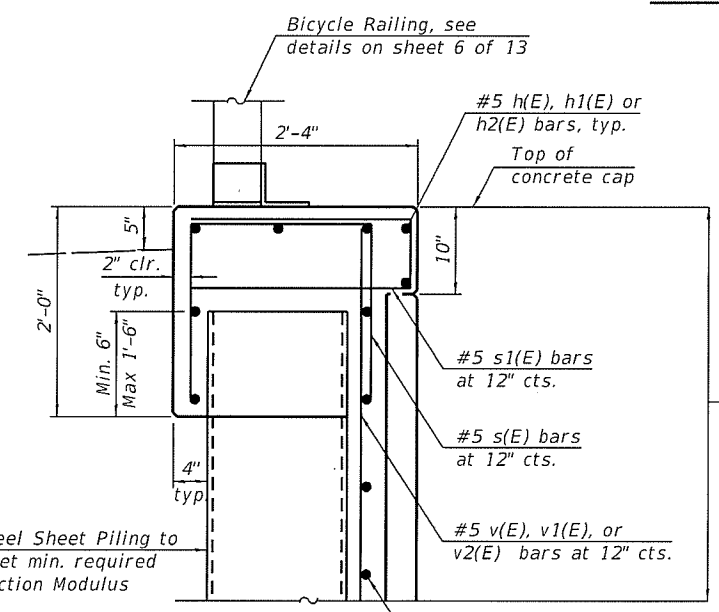


BAR s(E) & s1(E)



ELEVATION

(Rotated into view, Railing not shown for clarity)



SECTION A-A

Limits of formliner

** Bend in field to fit
*** Cut in field to fit

For information only, 450 square feet of formliner is anticipated.

BILL OF MATERIAL

Bar	No.	Size	Length	Shape
** h(E)	20	#5	27'-9"	—
** h1(E)	18	#5	14'-8"	—
** h2(E)	13	#5	9'-11"	—
*** v(E)	29	#5	14'-10"	—
*** v1(E)	16	#5	11'-10"	—
*** v2(E)	11	#5	6'-2"	—
s(E)	56	#5	5'-4"	□
s1(E)	56	#5	4'-6"	□
Concrete Structures			Cu Yd	38
Structure Excavation			Cu Yd	34
Reinforcement Bars, Epoxy Coated			Pound	2,280
Permanent Steel Sheet Piling			Sq Ft	2,187
Concrete Sealer			Sq Ft	887

* Concrete Structures calculated based on sheet piling size PZ40. Concrete quantity to be adjusted based on actual sheet piling sizes. Concrete Structures shall be colored in accordance with Integrally Colored Concrete.

FILE NAME = S:\JUL\18400-6199\6437\02\Drawings\CD\Micro\099-P012-xxxx-808-CONCAP.dgn

SA STRAND ASSOCIATES
1170 SOUTH HOUBOLT ROAD
JOLIET, ILLINOIS 60431
(815) 744-4200
IDFPR NO. 184-001273

USER NAME = JakJkSc
DESIGNED - BRL
CHECKED - AJS
DRAWN - BJF
CHECKED - BRL
PLOT SCALE =
PLOT DATE = 7/25/2019

REVISED - 07/22/2019
REVISED - 07/25/2019
REVISED -
REVISED -

STATE OF ILLINOIS
DEPARTMENT OF TRANSPORTATION

CONCRETE CAP AND FACING
STRUCTURE NO. 099-P012
SHEET NO. 8 OF 13 SHEETS

M.I.N. RTE.	SECTION	COUNTY	TOTAL SHEETS	SHEET NO.
1003	15-00024-00-BT	WILL	62	46
			CONTRACT NO. 61F18	
ILLINOIS FED. AID PROJECT				