

GENERAL NOTES CONTINUED

EROSION CONTROL PLANS

SEE EROSION CONTROL PLANS FOR GENERAL NOTES CONCERNING EROSION CONTROL.

TRAFFIC CONTROL PLANS

SEE TRAFFIC CONTROL PLANS FOR GENERAL NOTES CONCERNING TRAFFIC CONTROL AND PROTECTION.

EARTHWORK

PRIOR TO ANY EMBANKMENT PLACEMENT ALL VEGETATION AND UNSTABLE MATERIAL SHOULD BE REMOVED TO DEPTH ENCOUNTERED AND REPLACED WITH SUITABLE EMBANKMENT MATERIAL AS APPROVED BY THE ENGINEER

EXISTING TOPSOIL IS ASSUMED TO BE 6 INCHES IN THICKNESS AND IS REMOVED UNDER THE PAY ITEM, REMOVAL AND DISPOSAL OF UNSUITABLE MATERIAL.

STRUCTURAL PLANS

SEE STRUCTURAL PLANS FOR GENERAL NOTES CONCERNING STRUCTURAL DESIGN.

LIGHTING PLANS

SEE LIGHTING PLANS FOR GENERAL NOTES CONCERNING LIGHTING DESIGN.

THE CONTRACTOR SHALL TAKE PRECAUTION BY PRESERVING EXISTING TREES WITHIN THE RIGHT OF WAY. IF ANY DAMAGE OCCURS, TREE SHALL BE REPLACED IN KIND PER ARTICLE 201.07. REPAIR OR REPLACEMENT OF EXISTING PLANT MATERIAL REQUIREMENTS STATED HEREIN.

LAKE IN THE HILLS AIRPORT

IT IS THE CONTRACTORS RESPONSIBILITY TO COORDINATE WITH THE FAA AND THE LAKE IN THE HILLS AIRPORT ESPECIALLY FOR LARGE CRANES BEING USED FOR PILE DRIVING AND OTHER CONSTRUCTION TASKS. AND THAT THE PROJECT WAS TAKING PLACE WITHIN TEN THOUSAND FEET OF AN ACTIVE AIRPORT.

PROJECT COMMITMENTS

1. THE PROJECT AREA SHALL BE MOWED FROM MARCH 15TH THROUGH OCTOBER 14TH OF ANY GIVEN YEAR FOR THE LENGTH OF CONSTRUCTION SO AS NOT TO ALLOW THE GROWTH AND ESTABLISHMENT OF VEGETATION OR FLORAL RESOURCES.
2. MOWER DECKS SHALL BE SET AT A HEIGHT THAT DOES NOT CAUSE SCALPING AND SOIL DISTURBANCE.
3. AREAS WHICH ARE NOT CURRENTLY MOWED AND MAINTAINED BE MOWED AT A DECK HEIGHT OF 6 INCHES, UNLESS THE VEGETATION IS SHORTER SUCH THAT THIS DECK SETTING WOULD NOT BE FEASIBLE. AREAS WHICH ARE CURRENTLY MOWED AND MAINTAINED SHALL BE MOWED AND MAINTAINED AT THE CURRENT HEIGHT AND DECK SETTINGS.
4. NO PARKING OR CONSTRUCTION STAGING SHALL OCCUR ALONG THE PORTION OF RANDALL ROAD ADJACENT TO THE LAKE IN THE HILLS FEN NATURE PRESERVE.
5. DISTURBED AREAS SHALL BE RE-SEEDED WITH A CLASS 4 AND 5A OR B SEED MIXTURE IN ACCORDANCE WITH SECTION 250 OF IDOT'S STANDARD SPECIFICATIONS FOR ROAD AND BRIDGE CONSTRUCTION OR THE MCHENRY COUNTY CONSERVATION DISTRICT (MCCD) FEN MIX.
6. TREES THREE (3) INCHES OR GREATER IN DIAMETER AT BREST HEIGHT SHALL NOT BE CLEARED FROM APRIL 1ST THROUGH SEPTEMBER 30TH OF ANY GIVEN YEAR.
7. THE CONTRACTOR SHALL COORDINATE WITH THE FAA, ESPECIALLY FOR LARGE CRANES BEING USED FOR PILE DRIVING AND OTHER CONSTRUCTION TASKS. THE CONTRACTOR IS REQUIRED TO FILE FAA FORM 7460. ITEMS INCLUDING PILING, TRAFFIC SIGNALS, LIGHTING, MATERIALS, ETC. SHALL NOT BE ORDERED UNTIL IT HAS BEEN VERIFIED THAT THEY MEET ANY FAA VERTICAL AND VISUAL REQUIREMENTS.

PUBLIC SERVICE CONTACT LIST

ALGONQUIN-LAKE IN THE HILLS FIRE PROTECTION DISTRICT

1020 W ALGONQUIN ROAD, LAKE IN THE HILLS, IL 60156
(847) 658-8233

CONTACT: PETER VAN DORPE, FIRE CHIEF

CRYSTAL LAKE FIRE RESCUE DEPARTMENT

1020 W ALGONQUIN ROAD, LAKE IN THE HILLS, IL 60156
(847) 658-8233

CONTACT: PAUL DERAEDT, FIRE CHIEF

CITY OF CRYSTAL LAKE

100 WEST WOODSTOCK STREET, CRYSTAL LAKE, IL 60014
(815) 356-3614

CONTACT: MICHAEL MAGNUSON, DIRECTOR OF PUBLIC WORKS

VILLAGE OF LAKE IN THE HILLS

600 HARVEST GATE, LAKE IN THE HILLS, IL 60156
(847) 960-7506

CONTACT: RYAN MCDILLON, DIRECTOR OF PUBLIC WORKS

SCHOOL DISTRICT 300

2550 HARNISH DRIVE, ALGONQUIN, IL 60102
(847) 551-8300

CONTACT: FREDERICK HEID, SUPERINTENDENT

SCHOOL DISTRICT 47

300 COMMERCE DRIVE, CRYSTAL LAKE, IL 60014
(815) 788-5012

CONTACT: DR. KATHY J. HINZ, SUPERINTENDENT

SCHOOL DISTRICT 155

1 S. VIRGINIA ROAD, CRYSTAL LAKE, IL 60014
(815) 455-8500

CONTACT: DR. NEIL LESINSKI, SUPERINTENDENT

SCHOOL DISTRICT 47 AND 155 TRANSPORTATION CONTACT

1204 S. MCHENRY AVENUE, CRYSTAL LAKE, IL 60014
(815) 455-0558

UNITED STATES POSTAL SERVICE

801 ALGONQUIN ROAD WEST, ALGONQUIN, IL 60102
(847) 658-0012

CONTACT: REGINA COLBURN SOUREK, POSTMASTER

UNITED STATES POSTAL SERVICE

301 E CONGRESS PKWY, CRYSTAL LAKE, IL 60014
(815) 459-5979

CONTACT: UNKNOWN, POSTMASTER

MCHENRY COUNTY SHERIFFS OFFICE

2200 NORTH SEMINARY AVENUE, WOODSTOCK, IL 60098
(815) 338-2144

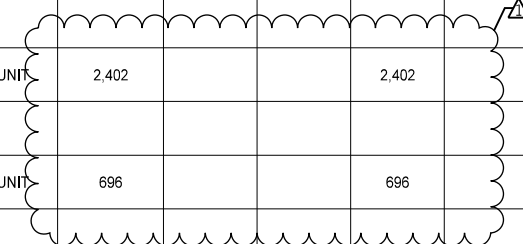
CONTACT: BILL PRIMM, SHERIFF

USER NAME = Mibeening	DESIGNED - WBL	REVISED -  7/19/2024
D1XXXXX-sht-gennote3.dgn	DRAWN - MLB	REVISED -
PLOT SCALE = N.T.S. in.	CHECKED - JLV	REVISED -
PLOT DATE = 7/18/2024	DATE - 6/14/2024	REVISED -

F.A.P RTE.	SECTION	COUNTY	TOTAL SHEETS	SHEET NO.
336	06-00329-02-PW	MCHENRY	735	4
CONTRACT NO. 61J93			ILLINOIS FED. AID PROJECT	



CODE NUMBER	ITEM	UNIT	TOTAL QUANTITY	ROADWAY RECONSTRUCTION, CAPACITY ADDED				BRIDGE REPLACEMENT		ENVIRON ONLY	SAFETY				BIKE/PED TRAILS	TRAINEES	UTILITIES		OTHER				
				80% STU 20% LA	80% STR 20% LA	80% FED 20% LA	100% LA	056-6406	056-3301	NOISE BARRIER	TRAFFIC SIGNALS		LIGHTING	056-W301			056-W302	RETAINING WALL					
											RANDALL AT MILLER	RANDALL AT ALEXANDRA						INTERCON	EVP	056-W303			
				0003				0010	0020		0021				0028	0042	0043		0044				
* 20100110	TREE REMOVAL (6 TO 15 UNITS DIAMETER)	UNIT	2,402			2,402																	
* 20100210	TREE REMOVAL (OVER 15 UNITS DIAMETER)	UNIT	696			696																	
20101000	TEMPORARY FENCE	FOOT	8,446			8,446																	
* 20101200	TREE ROOT PRUNING	EACH	3			3																	
* 20101300	TREE PRUNING (1 TO 10 INCH DIAMETER)	EACH	7			7																	
* 20101350	TREE PRUNING (OVER 10 INCH DIAMETER)	EACH	15			15																	
* 20101700	SUPPLEMENTAL WATERING	UNIT	28,660.5			28,660.5																	
20200100	EARTH EXCAVATION	CU YD	79,735			79,735																	
20201200	REMOVAL AND DISPOSAL OF UNSUITABLE MATERIAL	CU YD	27,605			27,605																	
20400800	FURNISHED EXCAVATION	CU YD	38,250			38,250																	
20600200	GRANULAR EMBANKMENT, SPECIAL	CU YD	6,814																				6,814
20700220	POROUS GRANULAR EMBANKMENT	CU YD	13,168			12,157																	110 331 570



- SPECIALTY ITEM

USER NAME = Mibeening	DESIGNED - WBL	REVISED - 7/19/2024
D\XXXXX-sht-soq1.dgn	DRAWN - MLB	REVISED -
PLOT SCALE = N.T.S. in.	CHECKED - JLV	REVISED -
PLOT DATE = 7/19/2024	DATE - 6/14/2024	REVISED -

**STATE OF ILLINOIS
 DEPARTMENT OF TRANSPORTATION**

SUMMARY OF QUANTITIES

SCALE: NONE SHEET 1 OF 43 SHEETS

F.A.P. RTE.	SECTION	COUNTY	TOTAL SHEETS	SHEET NO.
336	06-00329-02-PW	MCHENRY	735	5
CONTRACT NO. 61J93				
ILLINOIS FED. AID PROJECT				

CODE NUMBER	ITEM	UNIT	TOTAL QUANTITY	ROADWAY RECONSTRUCTION, CAPACITY ADDED				BRIDGE REPLACEMENT		ENVIRON ONLY	SAFETY				BIKE/PED TRAILS	TRAINEES	UTILITIES		OTHER					
				80% STU 20% LA	80% STR 20% LA	80% FED 20% LA	100% LA	056-6406	056-3301	NOISE BARRIER	TRAFFIC SIGNALS		LIGHTING	WATER MAIN			SANITARY SEWER	056-W301	056-W302	056-W303				
								80% STR 20% LA	80% STE 20% LA	RANDALL AT MILLER	RANDALL AT ALEXANDRA	INTERCON									EVP	RETAINING WALL		
								80% STR 20% LA	80% STE 20% LA												100% LA	80% STE 20% LA	80% STR 20% LA	
				0003	0010	0020	0021				0028	0042	0043	0044										
44201676	CLASS D PATCHES, TYPE IV, 2 INCH	SQ YD	100	100																				
44201684	CLASS D PATCHES, TYPE IV, 3 INCH	SQ YD	100	100																				
44201737	CLASS D PATCHES, TYPE I, 8 INCH	SQ YD	169			169																		
44201741	CLASS D PATCHES, TYPE II, 8 INCH	SQ YD	169			169																		
44201745	CLASS D PATCHES, TYPE III, 8 INCH	SQ YD	169			169																		
44201747	CLASS D PATCHES, TYPE IV, 8 INCH	SQ YD	169			169																		
44201785	CLASS D PATCHES, TYPE I, 12 INCH	SQ YD	110	110																				
44201789	CLASS D PATCHES, TYPE II, 12 INCH	SQ YD	110	110																				
44201794	CLASS D PATCHES, TYPE III, 12 INCH	SQ YD	110	110																				
44201796	CLASS D PATCHES, TYPE IV, 12 INCH	SQ YD	365	365																				
48101498	AGGREGATE SHOULDERS, TYPE B 4"	SQ YD	515			515																		
48203007	HOT-MIX ASPHALT SHOULDERS, 2 1/2"	SQ YD	268			268																		
50100300	REMOVAL OF EXISTING STRUCTURES NO. 1	EACH	1																		1			

• SPECIALTY ITEM

USER NAME = Mibeening	DESIGNED - WBL	REVISED - 7/19/2024
D1XXXXX-sht-soq7.dgn	DRAWN - MLB	REVISED -
PLOT SCALE = N.T.S. in.	CHECKED - JLV	REVISED -
PLOT DATE = 7/19/2024	DATE - 6/14/2024	REVISED -

**STATE OF ILLINOIS
 DEPARTMENT OF TRANSPORTATION**

SUMMARY OF QUANTITIES

SCALE: NONE SHEET 7 OF 43 SHEETS

F.A.P RTE.	SECTION	COUNTY	TOTAL SHEETS	SHEET NO.
336	06-00329-02-PW	MCHENRY	735	11
CONTRACT NO. 61J93			ILLINOIS FED. AID PROJECT	

TRANSYSTEMS
 1475 EAST WOODFIELD ROAD, SUITE 600
 SCHAMBERG, ILLINOIS 60173
 (847) 605-9600

FILE NAME: p:\b\shenit01\p\tr\transyscorp.com\transyscorp\p\p\p\Documents\Projects\CH401 - ChicagoR440\113006\140_0000\44.0000\44.0000\44.0000\Contract_25\Sheet_Files\03_Summary_of_Quantities\01XXXXX-sht-soq.dgn

CODE NUMBER	ITEM	UNIT	TOTAL QUANTITY	ROADWAY RECONSTRUCTION, CAPACITY ADDED				BRIDGE REPLACEMENT		ENVIRON ONLY	SAFETY					BIKE/PED TRAILS	TRAINEES	UTILITIES		OTHER																	
				80% STU 20% LA	80% STR 20% LA	80% FED 20% LA	100% LA	056-6406	056-3301	NOISE BARRIER	RANDALL AT MILLER	RANDALL AT ALEXANDRA	INTERCON	EVP	LIGHTING			WATER MAIN	SANITARY SEWER	056-W301	056-W302	056-W303															
								0010		0020	0021												0028	0042	0043		0044										
								0003																													
51200610	FURNISHING TREATED PILES OVER 38 FEET	FOOT	31,990																														31,990				
51200963	FURNISHING METAL SHELL PILES 16" X 0.375"	FOOT	4,900					2,074	2,826																												
51202305	DRIVING PILES	FOOT	81,804					2,074	2,826																												76,904
51202900	TEST PILE TIMBER	EACH	16																																		16
51203200	TEST PILE METAL SHELLS	EACH	6					2	4																												
51500100	NAME PLATES	EACH	2					1	1																												
52200010	TEMPORARY SHEET PILING	SQ FT	5,043						5,043																												
52200015	PERMANENT SHEET PILING	SQ FT	11,864					11,864																													
52200020	TEMPORARY SOIL RETENTION SYSTEM	SQ FT	11,220																																		11,220
52200500	MECHANICALLY STABILIZED EARTH RETAINING WALL	SQ FT	35,561																																5,080	27,340	3,141
52200505	TEMPORARY MECHANICALLY STABILIZED EARTH RETAINING WALL	SQ FT	11,540																																390	11,150	
52200700	PRECAST MODULAR RETAINING WALL	SQ FT	810					810																													

• SPECIALTY ITEM

USER NAME = Mibeening	DESIGNED - WBL	REVISED - 7/19/2024
D:\XXXX-sht-soq10.dgn	DRAWN - MLB	REVISED -
PLOT SCALE = N.T.S. in.	CHECKED - JLV	REVISED -
PLOT DATE = 7/19/2024	DATE - 6/14/2024	REVISED -

STATE OF ILLINOIS
DEPARTMENT OF TRANSPORTATION

SUMMARY OF QUANTITIES		
SCALE: NONE	SHEET 10	OF 43 SHEETS

F.A.P RTE.	SECTION	COUNTY	TOTAL SHEETS	SHEET NO.
336	06-00329-02-PW	MCHENRY	735	14
			CONTRACT NO. 61J93	
			ILLINOIS FED. AID PROJECT	

FILE NAME: p:\e\p\m\101_pae\transys\corp\comtransys\corp\paw\1\Documents\Projects\CH401 - Chicago\PA40113006\140_0000\44_0000\44_0000\44_0000\Contract_2\Sheet_Files\03_Summary_of_Quantities\01XXXXX-sh-soq.dgn

CODE NUMBER	ITEM	UNIT	TOTAL QUANTITY	ROADWAY RECONSTRUCTION, CAPACITY ADDED				BRIDGE REPLACEMENT		ENVIRON ONLY	SAFETY				BIKE/PED TRAILS	TRAINEES	UTILITIES		OTHER																									
				80% STU 20% LA	80% STR 20% LA	80% FED 20% LA	100% LA	056-6406	056-3301	NOISE BARRIER	RANDALL AT MILLER	RANDALL AT ALEXANDRA	INTERCON	EVP			LIGHTING	80% STE 20% LA	80% STR 20% LA	100% LA	80% STE 20% LA	80% STR 20% LA	WATER MAIN	SANITARY SEWER	056-W301	056-W302	056-W303																	
																												0003				0010	0020	0021				0028	0042	0043		0044		
* X0327999	ANTI-GRAFFITI COATING	SQ FT	79,421				79,421																																					
* X1400102	OUTDOOR RATED NETWORK CABLE	FOOT	200								200																																	
* X1400150	SERVICE INSTALLATION, GROUND MOUNTED, METERED	EACH	2								1	1																																
* X1400156	RADAR VEHICLE DETECTION SYSTEM, SINGLE APPROACH, FAR BACK	EACH	4								2	2																																
* X1400215	REMOTE CONTROLLED VIDEO SYSTEM	EACH	2								2																																	
* X1400216	LAYER II (DATALINK) SWTCH	EACH	4								1	1	2																															
* X1400238	LUMINAIRE, LED, SPECIAL	EACH	94											94																														
* X1400378	PEDESTRIAN SIGNAL POST, 5 FT.	EACH	1												1																													
* X1400424	ELECTRIC CABLE IN CONDUIT, STREET NAME SIGN, NO. 14 3C, TYPE SOOW	FOOT	1,495								880	615																																
X1800002	RIVER ROCK	TON	2,315				2,315																																					
X2010400	STUMP REMOVAL ONLY	UNIT	2,197				2,197																																					
* X2111224	PLANTING SOIL MIX FURNISH AND PLACE, 24"	SQ YD	1,108				1,108																																					

• SPECIALTY ITEM

USER NAME = Mibeening	DESIGNED - WBL	REVISED - 7/19/2024
D1XXXXX-sh-soq34.dgn	DRAWN - MLB	REVISED -
PLOT SCALE = in.	CHECKED - JLV	REVISED -
PLOT DATE = 7/19/2024	DATE - 6/14/2024	REVISED -

**STATE OF ILLINOIS
 DEPARTMENT OF TRANSPORTATION**

SUMMARY OF QUANTITIES
 SCALE: NONE SHEET 34 OF 43 SHEETS

F.A.P RTE.	SECTION	COUNTY	TOTAL SHEETS	SHEET NO.
336	06-00329-02-PW	MCHENRY	735	38
CONTRACT NO. 61J93			ILLINOIS FED. AID PROJECT	

CODE NUMBER	ITEM	UNIT	TOTAL QUANTITY	ROADWAY RECONSTRUCTION, CAPACITY ADDED				BRIDGE REPLACEMENT		ENVIRON ONLY	SAFETY					BIKE/PED TRAILS	TRAINEES	UTILITIES		OTHER																																												
				80% STU 20% LA	80% STR 20% LA	80% FED 20% LA	100% LA	056-6406	056-3301	NOISE BARRIER	RANDALL AT MILLER	RANDALL AT ALEXANDRA	INTERCON	EVP	LIGHTING			80% STE 20% LA	80% STR 20% LA	WATER MAIN	SANITARY SEWER	056-W301	056-W302	056-W303																																								
																									0003				0010		0020		0021					0028		0042		0043			0044																			
X5510012	PROPOSED STORM SEWER CONNECTION TO EXISTING STORM SEWER	EACH	13		13																																																											
*	X5510309	SANITARY SEWER REMOVAL AND REPLACEMENT 8"	FOOT	21																																																												
*	X5537800	STORM SEWERS TO BE CLEANED 12"	FOOT	200																																																												
*	X5537900	STORM SEWERS TO BE CLEANED 15"	FOOT	200																																																												
*	X5538200	STORM SEWERS TO BE CLEANED 24"	FOOT	200																																																												
*	X5610660	WATER MAIN TO BE ABANDONED, 16"	FOOT	1,000																																																												
*	X5610710	WATER MAIN REMOVAL, 10"	FOOT	2,635																																																												
*	X5610748	WATER MAIN LINE STOP 8"	EACH	1																																																												
*	X5610750	WATER MAIN LINE STOP 10"	EACH	1																																																												
*	X5630708	CONNECTION TO EXISTING WATER MAIN 8"	EACH	2																																																												
*	X5630710	CONNECTION TO EXISTING WATER MAIN 10"	EACH	2																																																												
	X5870015	BRIDGE DECK CONCRETE SEALER	SQ FT	1,504						285	1,219																																																					

• SPECIALTY ITEM

USER NAME = Mibeening D1XXXXX-sht-soq37.dgn PLOT SCALE = in PLOT DATE = 7/23/2024	DESIGNED - WBL	REVISED - 7/19/2024	<p align="center">STATE OF ILLINOIS DEPARTMENT OF TRANSPORTATION</p>	SUMMARY OF QUANTITIES					F.A.P. RTE. = 336	SECTION = 06-00329-02-PW	COUNTY = MCHENRY	TOTAL SHEETS = 735	SHEET NO. = 41
	DRAWN - MLB	REVISED -		SCALE: NONE	SHEET 37	OF 43	SHEETS	CONTRACT NO. 61J93			ILLINOIS FED. AID PROJECT		
	CHECKED - JLV	REVISED -											
	DATE = 6/14/2024	REVISED -											

CODE NUMBER	ITEM	UNIT	TOTAL QUANTITY	ROADWAY RECONSTRUCTION, CAPACITY ADDED				BRIDGE REPLACEMENT		ENVIRON ONLY	SAFETY				BIKE/PED TRAILS	TRAINEES	UTILITIES		OTHER					
				80% STU 20% LA	80% STR 20% LA	80% FED 20% LA	100% LA	056-6406	056-3301	NOISE BARRIER	RANDALL AT MILLER	RANDALL AT ALEXANDRA	INTERCON	EVP			LIGHTING	80% STE 20% LA	80% STR 20% LA	WATER MAIN	SANITARY SEWER	056-W301	056-W302	056-W303
* Z0033046	RE-OPTIMIZE TRAFFIC SIGNAL SYSTEM LEVEL 2	EACH	2										2											
* Z0033056	OPTIMIZE TRAFFIC SIGNAL SYSTEM	EACH	1										1											
Z0040530	PIPE UNDERDRAIN REMOVAL	FOOT	68		68																			
Z0056608	STORM SEWER (WATER MAIN REQUIREMENTS) 12 INCH	FOOT	539		539																			
Z0056610	STORM SEWER (WATER MAIN REQUIREMENTS) 15 INCH	FOOT	31		31																			
Z0056612	STORM SEWER (WATER MAIN REQUIREMENTS) 18 INCH	FOOT	50			50																		
Z0056616	STORM SEWER (WATER MAIN REQUIREMENTS) 24 INCH	FOOT	348		348																			
Z0056620	STORM SEWER (WATER MAIN REQUIREMENTS) 30 INCH	FOOT	225		225																			
Z0056626	STORM SEWER (WATER MAIN REQUIREMENTS) 48 INCH	FOOT	55		55																			
Z0056628	STORM SEWER (WATER MAIN REQUIREMENTS) 54 INCH	FOOT	72		72																			
Z0056635	STORM SEWER (WATER MAIN REQUIREMENTS) EQUIVALENT ROUND-SIZE 30 INCH	FOOT	15		15																			
* Z0056900	SANITARY SEWER 8"	FOOT	108															108						

- SPECIALTY ITEM

USER NAME = Mibeening	DESIGNED - WBL	REVISED - Δ 7/19/2024
D1XXXXX-sht-soq42.dgn	DRAWN - MLB	REVISED -
PLOT SCALE = in.	CHECKED - JLV	REVISED -
PLOT DATE = 7/23/2024	DATE - 6/14/2024	REVISED -

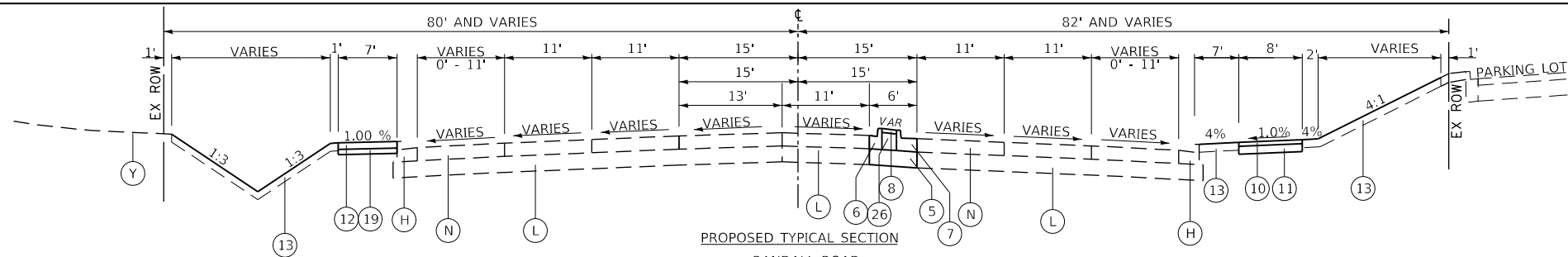
STATE OF ILLINOIS
DEPARTMENT OF TRANSPORTATION

SUMMARY OF QUANTITIES

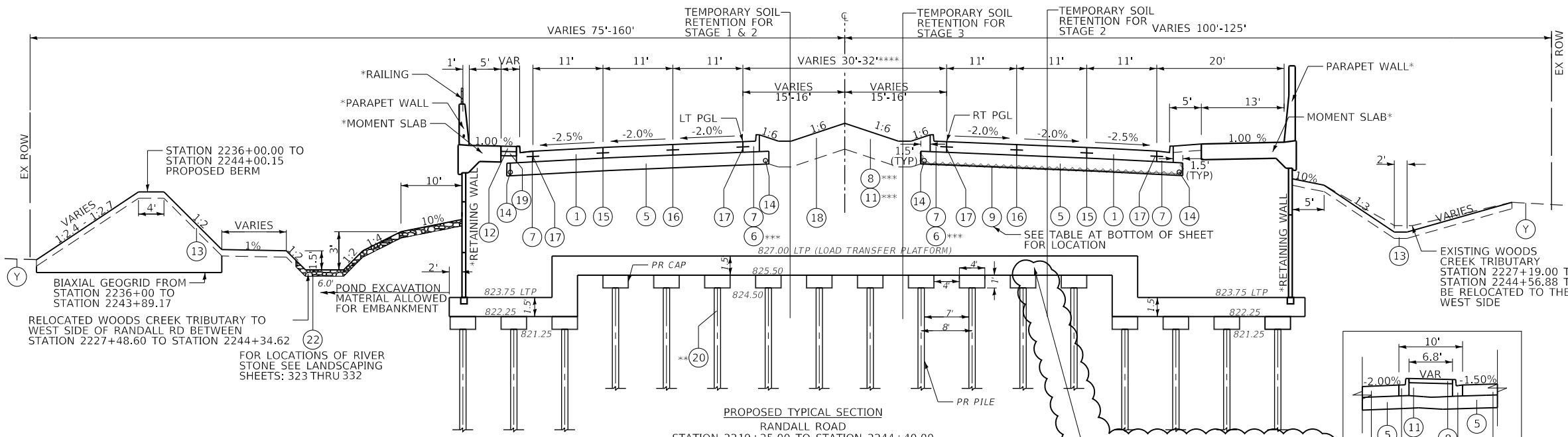
SCALE: NONE SHEET 42 OF 43 SHEETS

F.A.P RTE.	SECTION	COUNTY	TOTAL SHEETS	SHEET NO.
336	06-00329-02-PW	MCHENRY	735	46
CONTRACT NO. 61J93				
ILLINOIS		FED. AID PROJECT		

FILE NAME: p:\hs\hntb\10-e-r-transyscorp\transyscorp\11\Documents\Projects\CH401 - Chicago\140113006\14010004\00004\0800\Contract_2\Sheet_Files\04_Typical_Section\01XXXXX-sh1-Typical-5.dgn



PROPOSED TYPICAL SECTION
 RANDALL ROAD
 STATION 2214+31.18 TO STATION 2219+25.00

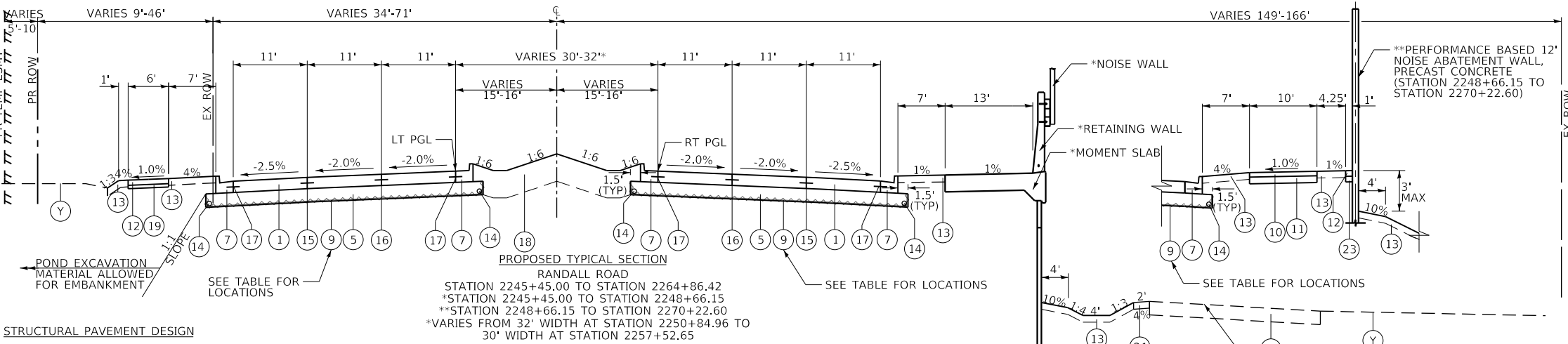


PROPOSED TYPICAL SECTION
 RANDALL ROAD
 STATION 2219+25.00 TO STATION 2244+40.00

STATION 2219+25.00 TO STATION 2244+40.00
 STATION 2226+52.33 TO STATION 2228+02.58 (PR BRIDGE OMISSION)
 *STATION 2225+40.13 TO STATION 2244+33.61 RT/
 **STATION 2221+77.19 TO STATION 2244+41.86 LT
 **STATION 2237+50.00 TO STATION 2244+90.00
 ***STATION 2238+47.00 TO STATION 2244+40.00
 ****STATION 2224+48.19 TO STATION 2229+30.19

TREATED TIMBER PILE SYSTEM

STATION RANGE	LOCATION	LENGTH	WIDTH	PILE LENGTH	DISTANCE C-C OF PILES
RANDALL ROAD					
2237+50 TO 2245+22	ROADWAY	772 FT	VARIES	30 FT	8 FOOT



PROPOSED TYPICAL SECTION
 RANDALL ROAD
 STATION 2245+45.00 TO STATION 2264+86.42
 *STATION 2245+45.00 TO STATION 2248+66.15
 **STATION 2248+66.15 TO STATION 2270+22.60
 *VARIES FROM 32' WIDTH AT STATION 2250+84.96 TO 30' WIDTH AT STATION 2257+52.65

STRUCTURAL PAVEMENT DESIGN

STRUCTURAL DESIGN TRAFFIC: YEAR 2032
 PV = 55,753 SU = 2,509 MU = 2,938
 ROAD/STREET CLASSIFICATION: CLASS I
 PERCENT OF STRUCTURAL DESIGN TRAFFIC IN DESIGN LANE:
 P = 8% S = 37% M = 37%
 TRAFFIC FACTOR: ACTUAL TF = 17.82 RIGID
 MINIMUM TF = NO MIN.
 JRC PAVEMENT EDGE SUPPORT = TIED
 SUBGRADE SUPPORT RATING:
 SSR = POOR (Sta. 2221+00 to 2290+32.35) RANDALL ROAD

AGGREGATE SUBGRADE IMPROVEMENT AND GEOTECHNICAL FABRIC FOR GROUND STABILIZATION

STATION RANGE	LOCATION	LENGTH	WIDTH	DEPTH	AGG SUBGRADE IMP VOLUME	GEOTECH FAB AREA
RANDALL ROAD						
2223+00 TO 2225+00	ROADWAY	200 FT	41.2'	1 FT	306 CY	917 SY
2253+00 TO 2257+00	ROADWAY	400 FT	82.4'	1 FT	1,220 CY	3,660 SY
2260+00 TO 2263+00	ROADWAY	300 FT	93.4'	1 FT	1,053 CY	3,158 SY
TOTALS					2,579 CY	7,735 SY

CLAYTON MARSH DR
 STATION 2245+73.71 TO
 STATION 2264+86.42

EXISTING

- (A) HMA SURFACE COURSE AND BINDER COURSE
- (B) HMA PAVEMENT (VARIES 10"-20")
- (C) PORTLAND CEMENT CONCRETE BASE COURSE (7 1/4")
- (D) SUBBASE GRANULAR MATERIAL (6" UNDER ROAD AND 4" UNDER SHOULDER AND VARIES)
- (E) GRASS MEDIAN
- (F) CONCRETE MEDIAN SURFACE
- (G) COMBINATION CONCRETE CURB & GUTTER, TY B-6.12
- (H) COMBINATION CONCRETE CURB & GUTTER, TY B-6.24 OR TYPE M-4.24 AT GUARDRAIL LOCATIONS
- (I) HMA SHOULDER (4" AND VARIES)
- (J) PORTLAND CEMENT CONCRETE SIDEWALK
- (K) HMA BIKE PATH
- (L) AGGREGATE SUBGRADE (12" AND VARIES)
- (M) CONCRETE MEDIAN, TY SB-6.12
- (N) PCC BASE COURSE (VARIES 4" TO 5")
- (O) EXPANDED POLYSTYRENE FOAM
- (P) POLYETHYLENE FILM
- (Q) WELDED WIRE FABRIC
- (R) SAND LEVELING COURSE 2"
- (S) 4" PIPE UNDERDRAIN WITH FABRIC LINED TRENCH
- (T) RETAINING WALL
- (U) FENCE
- (V) GUARDRAIL
- (W) TYPE A GUTTER
- (X) STONE RIPRAP
- (Y) TOPSOIL AND SEED, 6"
- (Z) PGE (CA 7)
- (ZZ) AGGREGATE SHOULDER, 4" PROPOSED

- (1) PORTLAND CEMENT CONCRETE PAVEMENT 10 1/4" (JOINTED)
- (2) PORTLAND CEMENT CONCRETE BASE COURSE, 7 1/4"
- (3) HMA PAVEMENT (FULL-DEPTH), (SEE SECTIONS FOR DEPTHS)
- (4) HOT-MIX ASPHALT SURFACE AND BINDER COURSE (SEE MIX TABLE ON SHEET 56)
- (5) AGGREGATE SUBGRADE IMPROVEMENT 12"
- (6) COMBINATION CONCRETE CURB & GUTTER, TY B-6.12
- (7) COMBINATION CONCRETE CURB & GUTTER, TY B-6.24
- (8) CONCRETE MEDIAN SURFACE, 4 INCH
- (9) GEOTECHNICAL FABRIC
- (10) HOT-MIX ASPHALT SURFACE COURSE, MIX "D", IL-9.5, N50, 4"
- (11) AGGREGATE BASE COURSE, TYPE B 6"
- (12) PORTLAND CEMENT CONCRETE SIDEWALK 5 INCH
- (13) TOPSOIL FURNISH AND PLACE 6" AND SEEDING AS NOTED ON PLANS
- (14) PIPE UNDERDRAINS, TYPE 2, 4"
- (15) LONGITUDINAL SAWED JOINT NO. 6 X 2'-6" LONG DEFORMED TIE BARS (EPOXY COATED) AT 2'-6" C-C (STANDARD 420001-08) (INCLUDED IN THE COST OF PCC PAVEMENT)
- (16) LONGITUDINAL CONSTRUCTION JOINT NO. 6 X 2' LONG DEFORMED TIE BARS GROUTED-IN-PLACE (EPOXY COATED) AT 2' C-C (STANDARD 420001-08) (INCLUDED IN THE COST OF PCC PAVEMENT)
- (17) NO. 6 X 2' LONG DEFORMED TIE BARS GROUTED-IN-PLACE (EPOXY COATED) AT 2' C-C (STANDARD 420001-08) (INCLUDED IN THE COST OF COMBINATION CURB & GUTTER OR CONCRETE MEDIAN)
- (18) TOPSOIL FURNISH AND PLACE 24" AND SEEDING (AS NOTED ON PLANS)
- (19) AGGREGATE BASE COURSE, TYPE B 4"
- (20) TREATED TIMBER PILE GROUND IMPROVEMENT
- (21) AGGREGATE SHOULDERS, TYPE B 4"
- (22) RIVER STONE PAID FOR AS RIVER ROCK
- (23) AGGREGATE BASE COURSE, TYPE B 5"
- (24) HOT-MIX ASPHALT SURFACE COURSE, IL-9.5, MIX "D", N70, 2"
- (25) HOT-MIX ASPHALT SURFACE COURSE, IL-9.5, MIX "D", N50, 2"
- (26) AGGREGATE BASE COURSE, TYPE B

STATE OF ILLINOIS
 DEPARTMENT OF TRANSPORTATION

PROPOSED TYPICAL SECTIONS
 RANDALL ROAD

USER NAME = Mibeening	DESIGNED - WBL	REVISED - 7/19/2024
D1XXXX-sht-Typical-5.dgn	DRAWN - MLB	REVISED -
PLOT SCALE = 20.0000' / in.	CHECKED - JLV	REVISED -
PLOT DATE = 7/19/2024	DATE - 6/14/2024	REVISED -

SCALE: SHEET 5 OF 10 SHEETS STA. TO STA.

F.A.P. RTE.	SECTION	COUNTY	TOTAL SHEETS	SHEET NO.
336	06-00329-02-PW	MCHENRY	735	52

CONTRACT NO. 61J93
 ILLINOIS FED. AID PROJECT

FILE NAME: p:\c1\hpc\mnt01\ae-transyscorp.com\transyscorp\pw1\Documents\Projects\CH401 - Chicago\B401132024\140.0000\44.0000\44.0000\44.0000\44.0000\44.0000\44.0000\44.0000\Contract_2\Sheet Files\05 - Schedules of Quantities\D1XXXXX-sht-schedule.dgn

SCHEDULE OF TREE REMOVAL							
STATION	OFFSET	LOCATION	NO. OF STEMS	DIAMETER (INCH)	20100110 TREE REMOVAL 6 TO 15 UNIT DIAMETER	20100210 TREE REMOVAL OVER 15 UNIT DIAMETER	X2010400 STUMP REMOVAL ONLY
115+62	55.54'	LT	1	9	-	-	9
115+67	51.64'	LT	1	7	-	-	7
115+68	30.73'	LT	1	12	-	-	12
115+81	41.55'	RT	1	3	-	-	-
116+04	95.64'	LT	4	6, 6, 6, 6	-	-	24
116+10	99.24'	LT	2	6, 6	-	-	12
116+16	30.64'	LT	1	11	-	-	11
116+17	55.48'	LT	1	6	-	-	6
116+26	53.77'	LT	1	6	-	-	6
116+47	60.56'	LT	1	6	-	-	6
116+86	58.91'	LT	1	6	-	-	6
117+47	44.45'	LT	1	8	-	-	8
119+32	54.42'	RT	1	43	-	43	-
119+35	61.66'	RT	1	21	-	-	21
119+37	55.06'	RT	1	16	-	-	16
119+65	59.38'	LT	1	22	-	22	-
119+66	72.32'	RT	1	24	-	-	24
119+75	74.40'	RT	1	15	-	-	15
119+89	46.96'	LT	2	6, 9	15	-	-
119+90	74.66'	RT	1	19	-	-	19
120+08	44.73'	LT	1	19	-	19	-
120+10	66.88'	RT	1	14	-	-	14
120+18	59.43'	RT	1	13	-	-	13
120+26	65.40'	RT	1	18	-	-	18
120+41	97.64'	RT	1	12	-	-	12
120+80	37.97'	LT	1	4	-	-	-
120+84	43.96'	LT	1	31	-	31	-
121+09	36.78'	LT	1	30	-	30	-
121+45	38.84'	RT	1	10	10	-	-
121+52	39.14'	RT	1	9	9	-	-
121+60	38.85'	RT	1	16	-	16	-
121+70	38.43'	RT	1	26	-	26	-
122+08	24.76'	RT	1	18	-	18	-

SCHEDULE OF TREE REMOVAL								
STATION	OFFSET	LOCATION	NO. OF STEMS	DIAMETER (INCH)	20100110 TREE REMOVAL 6 TO 15 UNIT DIAMETER	20100210 TREE REMOVAL OVER 15 UNIT DIAMETER	X2010400 STUMP REMOVAL ONLY	
122+08	24.76'	RT	1	15	15	-	-	
122+20	25.94'	RT	1	24	-	24	-	
SUB-TOTAL					49	229	513	
VILLAGE ROAD								
210+51	39.63'	LT	1	16	-	-	16	
210+53	40.19'	RT	1	18	-	-	18	
SUB-TOTAL					0	0	34	
ANGELA LANE								
303+42	27.06'	LT	1	10	-	-	10	
303+82	26.60'	LT	1	10	-	-	10	
SUB-TOTAL					0	0	20	
ALEXANDRA BOULEVARD								
405+22	28.82'	LT	1	10	-	-	10	
405+55	33.32'	LT	1	8	-	-	8	
405+58	50.59'	RT	1	6	-	-	6	
SUB-TOTAL					0	0	24	
TOTAL					2,402	696	2,197	

SCHEDULE OF REMOVAL ITEMS													
LOCATION	20100110	20100210	40600982	44000100	44000157	44000165	44000200	44000500	44000600	44003100	44004250	63200310	X6640104
	TREE REMOVAL (6 TO 15 UNITS DIAMETER)	TREE REMOVAL (OVER 15 UNITS DIAMETER)	HOT-MIX ASPHALT SURFACE REMOVAL - BUTT JOINT	PAVEMENT REMOVAL	HOT-MIX ASPHALT SURFACE REMOVAL, 2"	HOT-MIX ASPHALT SURFACE REMOVAL, 4"	DRIVEWAY PAVEMENT REMOVAL	COMBINATION CURB AND GUTTER REMOVAL	SIDEWALK REMOVAL	MEDIAN REMOVAL	PAVED SHOULDER REMOVAL	GUARDRAIL REMOVAL	FENCE REMOVAL
	UNIT	UNIT	SQ YD	SQ YD	SQ YD	SQ YD	SQ YD	FOOT	SQ FT	SQ FT	SQ YD	FOOT	FOOT
RANDALL ROAD													
STATION 2184+00 TO STATION 2196+00	-	-	-	-	-	-	-	-	-	-	-	-	-
STATION 2196+00 TO STATION 2208+00	-	-	-	-	-	-	-	-	-	-	-	-	-
STATION 2208+00 TO STATION 2219+00	-	-	-	382	-	-	-	169	-	3,399	-	-	-
STATION 2219+00 TO STATION 2230+00	195	32	-	11,026	-	-	-	1,783	1,412	-	507	1,155	-
STATION 2230+00 TO STATION 2240+00	410	226	-	10,149	-	-	-	2,033	5,038	-	613	1,110	315
STATION 2240+00 TO STATION 2251+00	131	65	-	12,023	-	-	-	2,478	6,251	-	1,374	1,280	884
STATION 2251+00 TO STATION 2263+00	-	-	-	12,374	-	-	-	1,845	586	-	806	-	1,200
STATION 2263+00 TO STATION 2275+00	112	-	17	12,823	-	-	-	1,368	2,189	1,029	1,269	-	967
STATION 2275+00 TO STATION 2287+00	1,482	159	20	16,349	-	-	87	790	3,623	-	2,134	515	896
STATION 2287+00 TO STATION 2299+00	38	50	44	12,142	-	4,385	178	3,413	-	1,625	439	-	-
STATION 2299+00 TO STATION 2309+00	-	-	-	-	-	-	-	-	-	-	-	-	-
MILLER ROAD													
STATION 100+00 TO STATION 108+00	-	-	26	-	987	-	-	176	672	-	-	-	-
STATION 108+00 TO STATION 115+25	-	-	-	1,805	3,106	-	-	941	2,966	-	117	-	-
STATION 120+00 TO STATION 129+00	34	164	13	1,987	-	-	146	633	1,364	-	-	-	-
VILLAGE ROAD													
STATION 201+00 TO STATION 210+00	-	-	22	53	2,317	-	-	40	-	-	-	-	-
ALEXANDRA BOULEVARD													
STATION 400+00 TO STATION 406+58	-	-	-	-	287	-	-	-	-	-	-	-	-
TOTAL													
	2,402	696	142	91,113	6,697	4,385	411	15,669	24,101	6,053	7,259	4,060	4,262



USER NAME = Mibeening	DESIGNED - WBL	REVISED - 7/19/2024
D1XXXXX-sht-Schedule-4.dgn	DRAWN - MLB	REVISED -
PLOT SCALE = in.	CHECKED - JLV	REVISED -
PLOT DATE = 7/19/2024	DATE - 6/14/2024	REVISED -

**STATE OF ILLINOIS
DEPARTMENT OF TRANSPORTATION**

SCHEDULE OF QUANTITIES	
SCALE: NONE	SHEET 4 OF 8 SHEETS

F.A.P. RTE.	SECTION	COUNTY	TOTAL SHEETS	SHEET NO.
336	06-00329-02-PW	MCHENRY	735	61
CONTRACT NO. 61J93			ILLINOIS FED. AID PROJECT	

SCHEDULE OF ROADWAY ITEMS																
	21001000	30300001	30300112	35101600	35101700	35101800	35300205	40600275	40600290	40603240	40604060	40604062	40605026	40701846	40701881	42000506
	GEOTECHNICAL FABRIC FOR GROUND STABILIZATION	AGGREGATE SUBGRADE IMPROVEMENT	AGGREGATE SUBGRADE IMPROVEMENT 12"	AGGREGATE BASE COURSE, TYPE B 4	AGGREGATE BASE COURSE, TYPE B 5	AGGREGATE BASE COURSE, TYPE B 6	PORTLAND CEMENT CONCRETE BASE COURSE 7 1/2"	BITUMINOUS MATERIALS (PRIME COAT)	BITUMINOUS MATERIALS (TACK COAT)	POLYMERIZED HOT-MIX ASPHALT BINDER COURSE, IL-19.0, N80	HOT-MIX ASPHALT SURFACE COURSE, IL-9.5, MIX "D", N50	HOT-MIX ASPHALT SURFACE COURSE, IL-9.5, MIX "D", N70	POLYMERIZED HOT-MIX ASPHALT SURFACE COURSE, STONE MATRIX ASPHALT, 9.5, MIX "F", N80	HOT-MIX ASPHALT PAVEMENT (FULL-DEPTH), 8 1/2"	HOT-MIX ASPHALT PAVEMENT (FULL-DEPTH), 10"	PORTLAND CEMENT CONCRETE PAVEMENT 10 1/2" (JOINTED)
LOCATION	SQ YD	CU YD	SQ YD	SQ YD	SQ YD	SQ YD	SQ YD	POUND	POUND	TON	TON	TON	TON	SQ YD	SQ YD	SQ YD
STATION 2184+00 TO STATION 2196+00	-	-	-	-	-	-	-	-	-	-	-	-	-	-	-	-
STATION 2196+00 TO STATION 2208+00	-	-	-	-	-	-	-	-	-	-	-	-	-	-	-	-
STATION 2208+00 TO STATION 2219+00	-	-	350	440	-	429	-	965	365	-	96	-	-	-	-	-
STATION 2219+00 TO STATION 2230+00	917	-	7,781	381	-	843	-	1,293	669	-	129	-	-	-	-	6,247
STATION 2230+00 TO STATION 2240+00	-	-	10,099	269	-	-	-	-	32	-	-	-	-	-	-	8,241
STATION 2240+00 TO STATION 2251+00	485	4,074	15,282	1,149	63	501	-	1,124	2,151	-	114	-	-	559	242	12,293
STATION 2251+00 TO STATION 2263+00	6,818	-	12,072	811	134	1,334	-	3,000	2,256	-	299	-	-	157	-	9,662
STATION 2263+00 TO STATION 2275+00	-	-	12,279	829	118	1,462	-	3,289	1,244	-	328	-	-	388	-	9,673
STATION 2275+00 TO STATION 2287+00	-	-	14,968	870	-	1,364	-	3,068	1,116	-	306	-	-	-	-	12,201
STATION 2287+00 TO STATION 2299+00	-	-	7,336	725	-	1,001	2,827	2,253	5,912	911	248	-	708	-	-	2,633
STATION 2299+00 TO STATION 2309+00	-	-	-	-	-	-	-	-	-	-	-	-	-	-	-	-
STATION 100+00 TO STATION 108+00	-	-	109	117	-	-	-	-	40	-	-	111	-	-	58	-
STATION 108+00 TO STATION 115+25	1,345	-	2,406	199	57	465	-	1,045	1,653	-	104	348	-	-	2,138	-
STATION 120+00 TO STATION 129+00	-	-	2,581	221	-	121	-	-	1,579	-	22	-	-	2,259	-	-
STATION 201+00 TO STATION 210+00	-	-	65	-	-	-	-	-	1,067	-	260	-	-	54	-	-
STATION 400+00 TO STATION 406+58	-	-	-	-	-	-	-	-	498	-	-	33	-	-	738	-
TOTAL	9,565	4,074	85,328	6,011	372	7,520	2,827	16,037	18,582	911	1,906	492	708	3,417	3,176	60,950

SCHEDULE OF ROADWAY ITEMS																
	42001300	42400200	42400410	42400800	48101498	48203007	60603800	60605000	60618300	63000005	63100045	63100087	63100089	63100167	63100169	
	PROTECTIVE COAT	PORTLAND CEMENT CONCRETE SIDEWALK 5 INCH	PORTLAND CEMENT CONCRETE SIDEWALK 8 INCH	DETECTABLE WARNINGS	AGGREGATE SHOULDERS, TYPE B 4"	HOT-MIX ASPHALT SHOULDERS 2 1/2"	COMBINATION CONCRETE CURB AND GUTTER, TYPE B-6,12	COMBINATION CONCRETE CURB AND GUTTER, TYPE B-6,24	CONCRETE MEDIAN SURFACE, 4 INCH	STEEL PLATE BEAM GUARDRAIL, TYPE B	TRAFFIC BARRIER TERMINAL, TYPE 2	TRAFFIC BARRIER TERMINAL, TYPE 6A	TRAFFIC BARRIER TERMINAL, TYPE 6B	TRAFFIC BARRIER TERMINAL, TYPE 1 (SPECIAL) TANGENT	TRAFFIC BARRIER TERMINAL, TYPE 1 (SPECIAL) FLARE	
LOCATION	SQ YD	SQ FT	SQ FT	SQ FT	SQ YD	SQ YD	FOOT	FOOT	SQ FT	FOOT	EACH	EACH	EACH	EACH	EACH	
STATION 2184+00 TO STATION 2196+00	-	-	-	-	-	-	-	-	-	-	-	-	-	-	-	
STATION 2196+00 TO STATION 2208+00	-	-	-	-	-	-	-	-	-	-	-	-	-	-	-	
STATION 2208+00 TO STATION 2219+00	764.0	3,952.0	-	32	-	-	322.0	614.0	888	-	-	-	-	-	-	
STATION 2219+00 TO STATION 2230+00	7,752.0	3,422.0	-	-	-	84	-	3,519.0	1,309	-	-	1	2	1	-	
STATION 2230+00 TO STATION 2240+00	9,719.0	2,417.0	-	-	-	-	306.0	3,694.5	1,172	-	-	-	-	-	-	
STATION 2240+00 TO STATION 2251+00	15,050.0	10,855.0	-	320	124	-	1,524.0	3,289.0	3,430	-	-	-	-	-	-	
STATION 2251+00 TO STATION 2263+00	12,009.0	8,783.5	-	52	267	-	195.0	4,815.0	-	-	-	-	-	-	-	
STATION 2263+00 TO STATION 2275+00	12,250.0	10,835.0	-	70	124	184	203.5	4,816.5	-	137.5	1	-	-	-	1	
STATION 2275+00 TO STATION 2287+00	14,312.0	8,059.5	-	109	-	-	1,365.5	3,550.0	2,271	-	-	-	-	-	-	
STATION 2287+00 TO STATION 2299+00	4,930.0	6,522.5	-	-	-	-	887.5	3,049.0	2,913	-	-	-	-	-	-	
STATION 2299+00 TO STATION 2309+00	-	-	-	-	-	-	-	-	-	-	-	-	-	-	-	
STATION 100+00 TO STATION 108+00	147.0	1,044.5	-	-	-	-	175.5	-	-	-	-	-	-	-	-	
STATION 108+00 TO STATION 115+25	413.0	2,301.5	-	-	-	-	937.0	-	-	-	-	-	-	-	-	
STATION 120+00 TO STATION 129+00	380.0	1,720.5	248.5	70	-	-	955.0	-	-	-	-	-	-	-	-	
STATION 201+00 TO STATION 210+00	7.0	-	-	-	-	-	40.0	-	-	-	-	-	-	-	-	
STATION 400+00 TO STATION 406+58	-	-	-	-	-	-	-	-	-	-	-	-	-	-	-	
TOTAL	77,733.0	59,913.0	248.5	653	515	288	6,911.0	27,347.0	11,983	137.5	1	1	2	1	1	

USER NAME = Mibeening	DESIGNED - WBL	REVISED - 7/19/2024
D1XXXX-sht-Schedule-5.dgn	DRAWN - MLB	REVISED -
PLOT SCALE = in.	CHECKED - JLV	REVISED -
PLOT DATE = 7/19/2024	DATE - 6/14/2024	REVISED -

**STATE OF ILLINOIS
 DEPARTMENT OF TRANSPORTATION**

SCHEDULE OF QUANTITIES

SCALE: NONE SHEET 5 OF 8 SHEETS

F.A.P. RTE.	SECTION	COUNTY	TOTAL SHEETS	SHEET NO.
336	06-00329-02-PW	MCHENRY	735	62
CONTRACT NO. 61J93			ILLINOIS FED. AID PROJECT	

SCHEDULE OF MAINTENANCE OF TRAFFIC ITEMS																
	44000100	70300211	70300221	70300241	70300281	70301100	70301120	70301130	70301210	70307100	70307120	70307130	70307140	70307210	70400100	70400125
	PAVEMENT REMOVAL	TEMPORARY PAVEMENT MARKING LETTERS AND SYMBOLS - PAINT	TEMPORARY PAVEMENT MARKING - LINE 4" - PAINT	TEMPORARY PAVEMENT MARKING - LINE 6" - PAINT	TEMPORARY PAVEMENT MARKING - LINE 24" - PAINT	TEMPORARY PAVEMENT MARKING LETTERS AND SYMBOLS - EPOXY	TEMPORARY PAVEMENT MARKING - LINE 4" - EPOXY	TEMPORARY PAVEMENT MARKING - LINE 6" - EPOXY	TEMPORARY PAVEMENT MARKING - LINE 24" - EPOXY	TEMPORARY PAVEMENT MARKING LETTERS AND SYMBOLS - TYPE IV TAPE	TEMPORARY PAVEMENT MARKING - LINE 4" - TYPE IV TAPE	TEMPORARY PAVEMENT MARKING - LINE 6" - TYPE IV TAPE	TEMPORARY PAVEMENT MARKING - LINE 8" - TYPE IV TAPE	TEMPORARY PAVEMENT MARKING - LINE 24" - TYPE IV TAPE	TEMPORARY CONCRETE BARRIER	FINNING TEMPORARY CONCRETE BARRIER
LOCATION	SQ YD	SQ FT	FOOT	FOOT	FOOT	SQ FT	FOOT	FOOT	FOOT	SQ FT	FOOT	FOOT	FOOT	FOOT	FOOT	EACH
STATION 2184+00 TO STATION 2196+00	-	-	-	-	-	-	-	-	-	-	-	-	56	-	-	-
STATION 2196+00 TO STATION 2208+00	-	-	-	-	-	-	-	-	-	185	4,284	400	2,944	-	-	-
STATION 2208+00 TO STATION 2219+00	382	-	-	-	-	-	-	-	-	592	28,630	8,277	-	538	-	36
STATION 2219+00 TO STATION 2230+00	11,026	16	21,464	13	-	16	21,464	13	-	-	18,178	269	-	-	950	245
STATION 2230+00 TO STATION 2240+00	10,149	148	20,001	204	-	148	20,001	204	-	21	16,000	98	-	-	1,013	116
STATION 2240+00 TO STATION 2251+00	12,023	-	23,996	2,648	231	-	23,996	2,648	231	386	30,884	9,550	-	770	888	213
STATION 2251+00 TO STATION 2263+00	12,374	132	29,533	1,997	66	132	29,533	1,997	66	222	21,541	2,584	-	331	2,788	348
STATION 2263+00 TO STATION 2275+00	12,823	-	24,577	-	25	-	24,577	-	25	37	22,611	1,644	-	90	3,350	328
STATION 2275+00 TO STATION 2287+00	16,349	148	26,317	-	45	148	26,317	-	45	222	19,088	3,527	-	28	3,038	225
STATION 2287+00 TO STATION 2299+00	12,142	74	18,291	1,691	22	74	18,291	1,691	22	370	18,541	4,558	-	225	1,363	191
STATION 2299+00 TO STATION 2309+00	-	37	-	-	-	37	-	-	-	-	10,511	186	792	-	-	-
STATION 100+00 TO STATION 108+00	-	37	-	-	-	37	-	-	-	-	7,220	-	-	-	-	-
STATION 108+00 TO STATION 115+25	1,805	74	-	-	-	74	-	-	-	222	23,917	6,208	-	-	-	-
STATION 120+00 TO STATION 129+00	1,987	37	265	-	-	37	265	-	-	111	2,258	941	-	48	-	50
STATION 201+00 TO STATION 210+00	53	-	1,211	-	-	-	1,211	-	-	-	1,828	338	-	-	-	-
STATION 400+00 TO STATION 406+58	-	-	-	-	-	-	-	-	-	-	11,623	1,002	-	56	-	-
TOTAL	91,113	703	165,655	6,553	389	703	165,655	6,553	389	2,368	237,114	39,582	3,792	2,086	13,388	1,752

SCHEDULE OF MAINTENANCE OF TRAFFIC ITEMS									
	70400200	70600260	70600332	78300201	78300202	X4023000	Z0030850	Z0062456	Z0062458
	RELOCATE TEMPORARY CONCRETE BARRIER	IMPACT ATTENUATORS TEMPORARY (FULLY REDIRECTIVE, NARROW), TEST LEVEL 3	IMPACT ATTENUATORS, RELOCATE (FULLY REDIRECTIVE, NARROW), TEST LEVEL 3	PAVEMENT MARKING REMOVAL - GRINDING	PAVEMENT MARKING REMOVAL - WATER BLASTING	TEMPORARY ACCESS (ROAD)	TEMPORARY INFORMATION SIGNING	TEMPORARY PAVEMENT	TEMPORARY PAVEMENT (VARIABLE DEPTH)
LOCATION	FOOT	EACH	EACH	SQ FT	SQ FT	EACH	SQ FT	SQ YD	TON
STATION 2184+00 TO STATION 2196+00	-	-	-	-	37	2	595	-	-
STATION 2196+00 TO STATION 2208+00	-	-	-	-	3,776	-	-	-	-
STATION 2208+00 TO STATION 2219+00	438	-	1	-	15,350	-	-	382	-
STATION 2219+00 TO STATION 2230+00	4,275	1	2	2,157	6,194	-	-	2,190	-
STATION 2230+00 TO STATION 2240+00	2,413	-	-	1,941	5,403	-	-	3,254	-
STATION 2240+00 TO STATION 2251+00	3,925	2	2	3,162	16,996	-	-	2,045	-
STATION 2251+00 TO STATION 2263+00	1,513	2	4	2,890	9,356	-	-	3,077	-
STATION 2263+00 TO STATION 2275+00	1,213	2	-	2,095	8,576	-	-	3,518	195
STATION 2275+00 TO STATION 2287+00	338	2	-	2,114	8,405	-	-	6,078	328
STATION 2287+00 TO STATION 2299+00	163	3	6	1,536	9,279	-	-	1,968	53
STATION 2299+00 TO STATION 2309+00	-	-	-	-	4,125	-	-	-	-
STATION 100+00 TO STATION 108+00	-	-	-	-	2,407	-	-	-	-
STATION 108+00 TO STATION 115+25	-	-	-	-	11,298	-	-	-	-
STATION 120+00 TO STATION 129+00	-	-	-	44	1,431	-	-	-	-
STATION 201+00 TO STATION 210+00	-	-	-	-	778	-	-	-	-
STATION 400+00 TO STATION 406+58	-	-	-	-	4,467	-	-	-	-
TOTAL	14,275	12	15	15,939	107,898	2	595	22,512	576

USER NAME = Mibeening	DESIGNED - WBL	REVISED - 7/19/2024
D1XXXX-sht-Schedule-6.dgn	DRAWN - MLB	REVISED -
PLOT SCALE = in.	CHECKED - JLV	REVISED -
PLOT DATE = 7/19/2024	DATE - 6/14/2024	REVISED -

**STATE OF ILLINOIS
 DEPARTMENT OF TRANSPORTATION**

SCHEDULE OF QUANTITIES

SCALE: NONE SHEET 6 OF 8 SHEETS

F.A.P RTE.	SECTION	COUNTY	TOTAL SHEETS	SHEET NO.
336	06-00329-02-PW	MCHENRY	735	63
CONTRACT NO. 61J93			ILLINOIS FED. AID PROJECT	

**RANDALL ROAD
PRESTAGE AND WINTER SHUTDOWN 1**

CONSTRUCTION

1. PATCH EXISTING LANES UNDER LANES CLOSURES. A QUANTITY OF CLASS D PATCHES, TYPE IV, 3" OR 12" HAVE BEEN INCLUDED TO BE USED AT THE DISCRETION OF THE ENGINEER TO PATCH DETERIORATED PAVEMENT PARTIAL DEPTH OR FULL DEPTH. REMOVE EXISTING RAISED MEDIAN AND NORTHBOUND SHOULDER UNDER LANE CLOSURES WHERE TEMPORARY PAVEMENT WILL BE REQUIRED FOR THE PRESTAGE TRAFFIC.
2. REMOVE EXISTING MEDIAN AND NORTHBOUND SHOULDERS, CONCRETE CURB AND GUTTER, AND GUARDRAIL WHERE TEMPORARY PAVEMENT WILL BE REQUIRED FOR STAGE 1.
3. INSTALL TEMPORARY TRAFFIC SIGNALS ALONG RANDALL ROAD AT MILLER ROAD AND ALEXANDRA BLVD FOR USE STARTING IN STAGE 1,
4. INSTALL TEMPORARY LIGHTING AS SHOWN IN THE TEMPORARY LIGHTING PLANS.
5. INSTALL 3 - 78" DIAMETER CLASS A TEMPORARY PIPE CULVERTS JUST SOUTH OF THE EXISTING TRIPLE BOX CULVERT AT WOODS CREEK. CONSTRUCT CLASS D PATCHES, TYPE IV, 12" OVER THE NIGHT 1 CULVERT INSTALLATION ON THE EAST SIDE FOR USE BY TRAFFIC DURING NIGHT 2 CULVERT INSTALLATION..
6. INSTALL EROSION AND SEDIMENT CONTROL.
7. CONSTRUCT TEMPORARY PAVEMENT WITHIN THE MEDIAN AND NORTHBOUND SHOULDER UNDER LANE CLOSURES AS SHOWN ON PRESTAGE PLANS.
8. REMOVE EXISTING PAVEMENT MARKINGS, REFLECTORS, AND SIGNS THAT CONFLICT WITH STAGE 1.
9. INSTALL STORM SEWER OUTFALLS WHICH OUTFALL TO THE EAST AND PATCH WITH CLASS D PATCHES, TYPE IV, 12" AS SHOWN ON THE PLANS.
10. BEGIN EXCAVATION AND GRADING OF THE DETENTION PONDS AND PROPOSED TRIBUTARY ALONG THE WEST SIDE OF RANDALL ROAD.

MAINTENANCE OF TRAFFIC

1. MAINTAIN EXISTING TRAFFIC PATTERNS WITH DAILY/DAYTIME LANES CLOSURES FOR MEDIAN, SHOULDER, AND PATCHING WORK USING CURRENT HIGHWAY STANDARDS 701011, 701301, 701311, AND 701421.
2. UTILIZE SHOULDER CLOSURES TO INSTALL TEMPORARY TRAFFIC SIGNAL AND LIGHTING.
3. TO INSTALL 3 TEMPORARY CLASS A CULVERTS DURING NIGHT TIME LANE CLOSURES. THIS WORK WOULD BE DONE OVER TWO NIGHTS. THE FIRST NIGHT, INSTALL TEMPORARY CULVERTS EAST OF THE CENTERLINE AND SECOND NIGHT, INSTALL THE OTHER SECTIONS OF THE TEMPORARY CULVERTS WEST OF THE CENTERLINE. EACH CULVERT WOULD BE 6.5' (78") IN DIAMETER AND APPROXIMATELY 103' LONG PROVIDING AN OPENING OF APPROXIMATELY 99 SF.

STAGE 1 AND WINTER SHUTDOWN 2

CONSTRUCTION

1. ESTABLISH TEMPORARY DRAINAGE ALONG THE EAST PARKWAY AND STAGE 1 WORK ZONE.
2. CONSTRUCT WALL 1 AND WALL 2 RETAINING WALLS ON THE WEST SIDE OF RANDALL ROAD.
3. CONSTRUCT MAINLINE STORM SEWER ON THE WEST SIDE, WEST SIDE LATERALS, AND STUBS FOR EAST LATERALS.
4. REMOVE EXISTING PAVEMENT.
5. CONSTRUCT PROPOSED GROUND IMPROVEMENT SYSTEM AT LOCATIONS AS SHOWN ON THE PLANS.
6. CONSTRUCT SOUTHBOUND PAVEMENT, CURB AND GUTTER, AND SIDEWALK.
7. CONSTRUCT ALEXANDRA BOULEVARD AND ADJACENT SOUTHBOUND RANDALL ROAD PAVEMENT.
8. CONSTRUCT VILLAGE ROAD AND ADJACENT SOUTHBOUND RANDALL ROAD PAVEMENT EXCEPT THAT THE INSIDE/EAST SOUTHBOUND THRU LANE PAVEMENT FROM STA 2257 TO 2263 WILL NOT BE CONSTRUCTED UNTIL STAGE 4.
9. CONSTRUCT ANGELA LANE AND ADJACENT SOUTHBOUND RANDALL ROAD PAVEMENT.
10. INSTALL GROUND IMPROVEMENTS AND CONSTRUCT TRIBUTARY BRIDGE UNDER MILLER ROAD.
11. CONSTRUCT WEST LEG OF MILLER ROAD.
12. CONSTRUCT WEST HALF OF WOODS CREEK BRIDGE.
13. PLANTINGS IDENTIFIED IN THE APPROVED PERMITS MUST BE ESTABLISHED PRIOR TO RELOCATING THE TRIBUTARY FLOW TO THE WEST SIDE OF RANDALL ROAD.
14. RELOCATE TRIBUTARY FLOW TO THE WEST SIDE OF RANDALL ROAD.
15. REMOVE PAVEMENT MARKINGS AND TRAFFIC CONTROL DEVICES THAT CONFLICT WITH STAGE 2.
16. PLACE STAGE 2 PAVEMENT MARKINGS AND TRAFFIC CONTROL DEVICES PRIOR TO STAGE 2.
17. REALIGN TEMPORARY TRAFFIC SIGNALS PRIOR TO STAGE 2.
18. COMPLETE PERMANENT WEST SIDE LANDSCAPING.
19. REMOVE EXISTING BOX CULVERT-WESTERN SEGMENT AT THE INTERSECTION OF RANDALL RD AND MILLER RD.
20. INSTALL PERMANENT WEST SIDE LIGHTING.

MAINTENANCE OF TRAFFIC

1. MAINTAIN STAGE 1 TRAFFIC ON THE EAST SIDE OF RANDALL ROAD.
2. TWO OF THE EXISTING THREE NB LEFTS (MILLER, VILLAGE & ALEXANDRA) MUST REMAIN OPEN AT ALL TIMES.
3. THE WEST LEG OF MILLER CAN BE CLOSED FOR NO LONGER THAN 6 MONTHS AND CAN ONLY IMPACT 1 SCHOOL YEAR. CONSTRUCTION ANTICIPATED TO BEGIN JUNE 30, 2025.
4. ALEXANDRA AND VILLAGE CAN BE CLOSED FOR NO LONGER THAN 4 WEEKS.
5. ANGELA CAN BE CLOSED FOR NO LONGER THAN 3 WEEKS.
6. MAINTAIN EXISTING PEDESTRIAN CROSSINGS.

STAGE 2

CONSTRUCTION

1. ESTABLISH TEMPORARY DRAINAGE WITHIN THE STAGE 2 WORK ZONE.
2. REMOVE EXISTING PAVEMENT.
3. CONSTRUCT PROPOSED GROUND IMPROVEMENT SYSTEM AT LOCATIONS AS SHOWN ON THE PLANS.
4. CONSTRUCT LEFT TURN LANE AND ACCELERATION LANE PAVEMENT AS SHOWN ON STAGE 2 PLANS.
5. CONSTRUCT TEMPORARY PAVEMENT REQUIRED FOR STAGE 3.
6. REMOVE PAVEMENT MARKINGS AND TRAFFIC CONTROL DEVICES THAT CONFLICT WITH STAGE 3.
7. PLACE STAGE 3 PAVEMENT MARKINGS AND TRAFFIC CONTROL DEVICES.
8. REALIGN TEMPORARY TRAFFIC SIGNALS PRIOR TO STAGE 3.
9. CONSTRUCT NB DUAL LEFT TURN LANES AT RANDALL/ACKMAN.
10. REMOVE EXISTING BOX CULVERT-MIDDLE SEGMENT AT THE INTERSECTION OF RANDALL RD AND MILLER RD.

MAINTENANCE OF TRAFFIC

1. MAINTAIN STAGE 2 SOUTHBOUND TRAFFIC ON NEW PAVEMENT AND NORTHBOUND TRAFFIC ON EXISTING PAVEMENT.
2. MAINTAIN EXISTING PEDESTRIAN CROSSINGS.
3. ESTABLISH STAGE 3 TRAFFIC AS DETAILED IN THE PLANS PRIOR TO STAGE 3 WINTER SHUTDOWN.
4. MAINTAIN NORTHBOUND LEFT IN ACCESS AT VILLAGE DRIVE AND ALEXANDRA BOULEVARD.
5. NORTHBOUND RANDALL ROAD TO WESTBOUND MILLER ROAD, EASTBOUND MILLER ROAD TO NORTHBOUND RANDALL ROAD AND MILLER ROAD THROUGH MOVEMENTS CONTINUE TO BE CLOSED AND WILL UTILIZE THE DETOUR SHOWN IN THE PLANS.

FILE NAME: p:\sh\hnt01\p-e\transyscorp\comtransyscorp\work\1\Documents\Projects\CH401 - Chicago\RAJ40113006\140,000\44,000\44,000\Contract_2\Sheet Files\10_Suggested Stages of Construction and Traffic_Control\DJXXXX-sht-Nar_00.dgn

TRANSYSTEMS
1475 EAST WOODFIELD ROAD, SUITE 600
SCHAMBERG, ILLINOIS 60173
(847) 605-9600

USER NAME = Mibeening	DESIGNED - WBL	REVISED - 7/19/2024
DJXXXX-sht-Nar-01.dgn	DRAWN - BMS	REVISED -
PLOT SCALE = N.T.S. in.	CHECKED - JLV	REVISED -
PLOT DATE = 7/19/2024	DATE - 6/14/2024	REVISED -

**STATE OF ILLINOIS
DEPARTMENT OF TRANSPORTATION**

**STAGES OF CONSTRUCTION AND TRAFFIC CONTROL
RANDALL ROAD NARRATIVE**

SCALE: NONE SHEET 2 OF 49 SHEETS

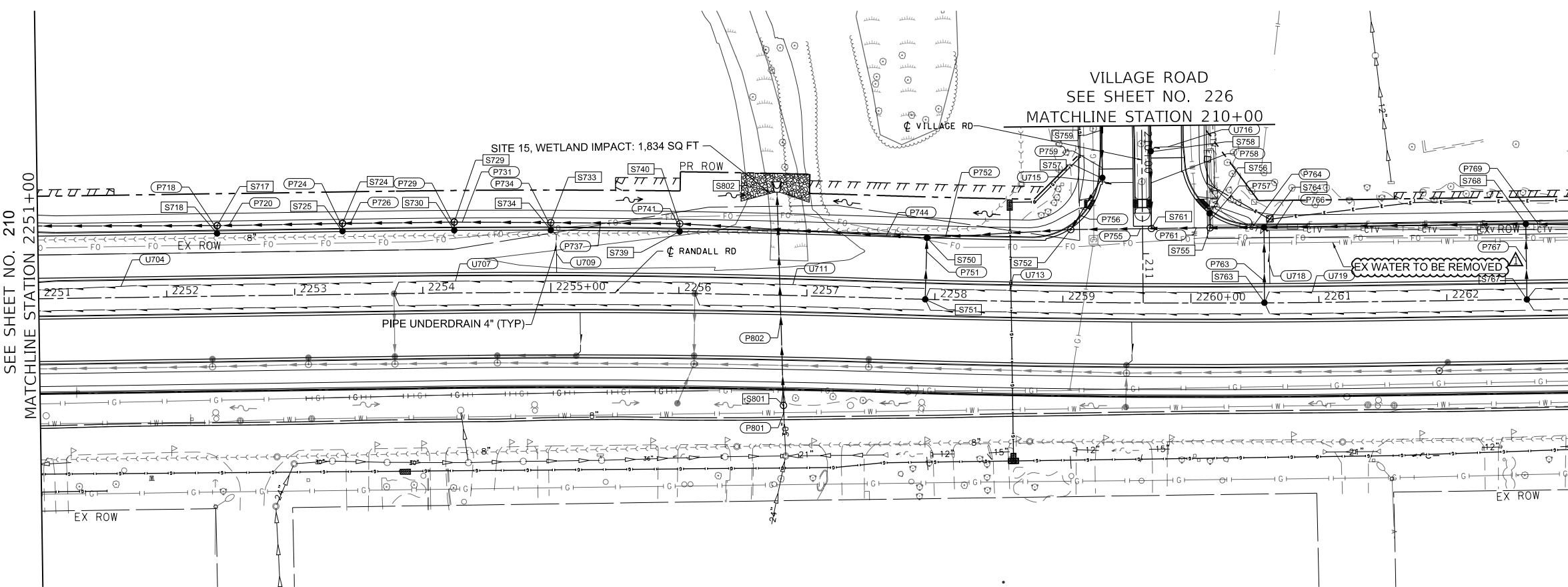
F.A.P RTE.	SECTION	COUNTY	TOTAL SHEETS	SHEET NO.
336	06-00329-02-PW	MCHENRY	735	101
		CONTRACT NO. 61J93		
ILLINOIS FED. AID PROJECT				

PLAN	SURVEYED	DATE
	PLOTTED	BY
	ALIGNED	NO.
	CHECKED	NO.
	FILE NAME	NO.
	FILE NO.	NO.

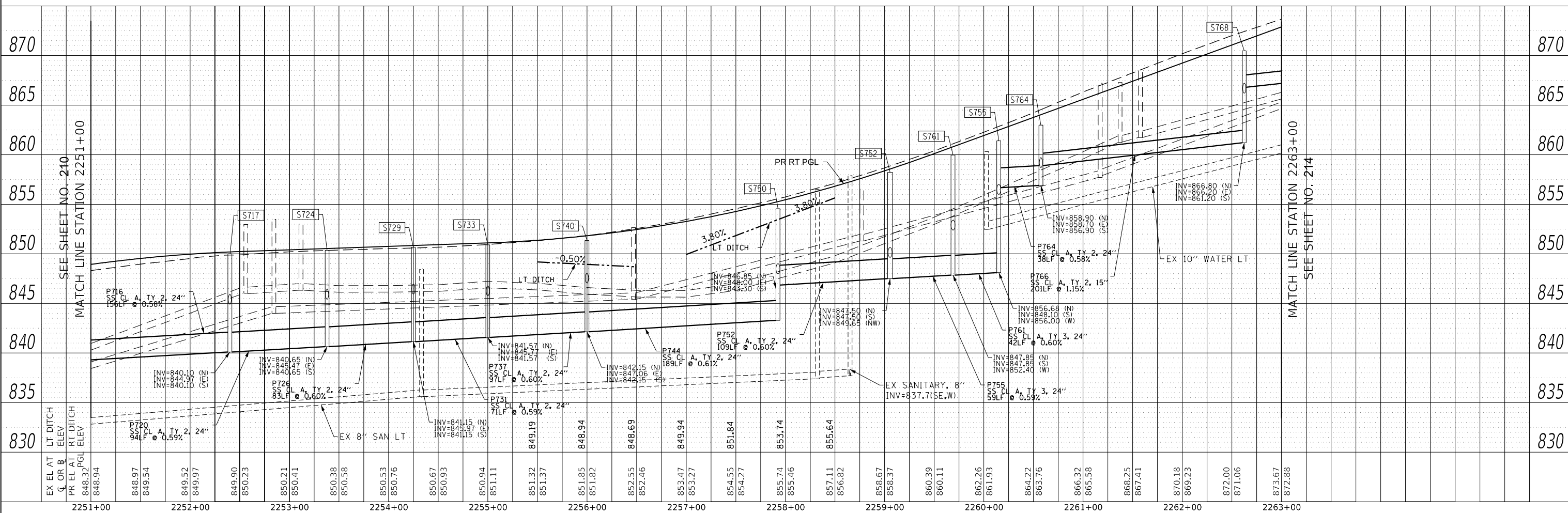
PROFILE	SURVEYED	DATE
	PLOTTED	BY
	GRADES CHECKED	NO.
	STRUCTURE NOTATIONS CHKD	NO.



FILE NAME: p:\blaw\m01\p01\transyscorp\mtransyscorp\paw\Documents\Projects\paw\0000044\0000044.dwg; Contract: 03Sheet_Plan13_Drainage and Utilities\03XXXXX-ent-b1-c09.dwg



- ### LEGEND
- P PROPOSED PIPE
 - PROPOSED STRUCTURE
 - ADJ STRUCTURE TO BE ADJUSTED
 - REC STRUCTURE TO BE RECONSTRUCTED
 - STRUCTURE IDENTIFIED ON OTHER CORRESPONDING SHEET
 - PIPE IDENTIFIED ON OTHER CORRESPONDING SHEET



USER NAME =	Mibeening	DESIGNED -	BLA	REVISED -	7/19/2024
D1XXXXX-sht-DU-09.dgn		DRAWN -	BLA	REVISED -	
PLOT SCALE =	100.0001' / in.	CHECKED -	BLA	REVISED -	
PLOT DATE =	7/23/2024	DATE -	6/14/2024	REVISED -	

**STATE OF ILLINOIS
DEPARTMENT OF TRANSPORTATION**

RANDALL ROAD DRAINAGE AND UTILITY - LEFT SIDE

SCALE: 1"=50' HORIZ / 1"=5' VERT SHEET 9 OF 39 SHEETS STA. 2251+00 TO STA. 2263+00

F.A.P RTE.	SECTION	COUNTY	TOTAL SHEETS	SHEET NO.
336	06-00329-02-PW	MCHENRY	735	212
ILLINOIS		FED. AID PROJECT	CONTRACT NO. 61J93	

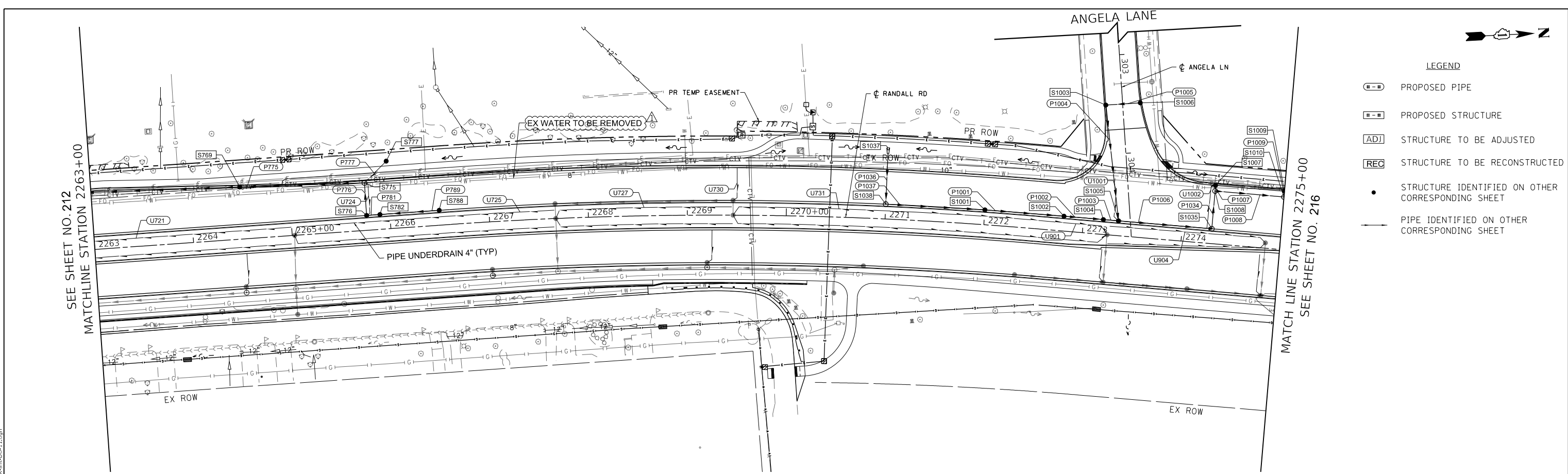


BLA, Inc.

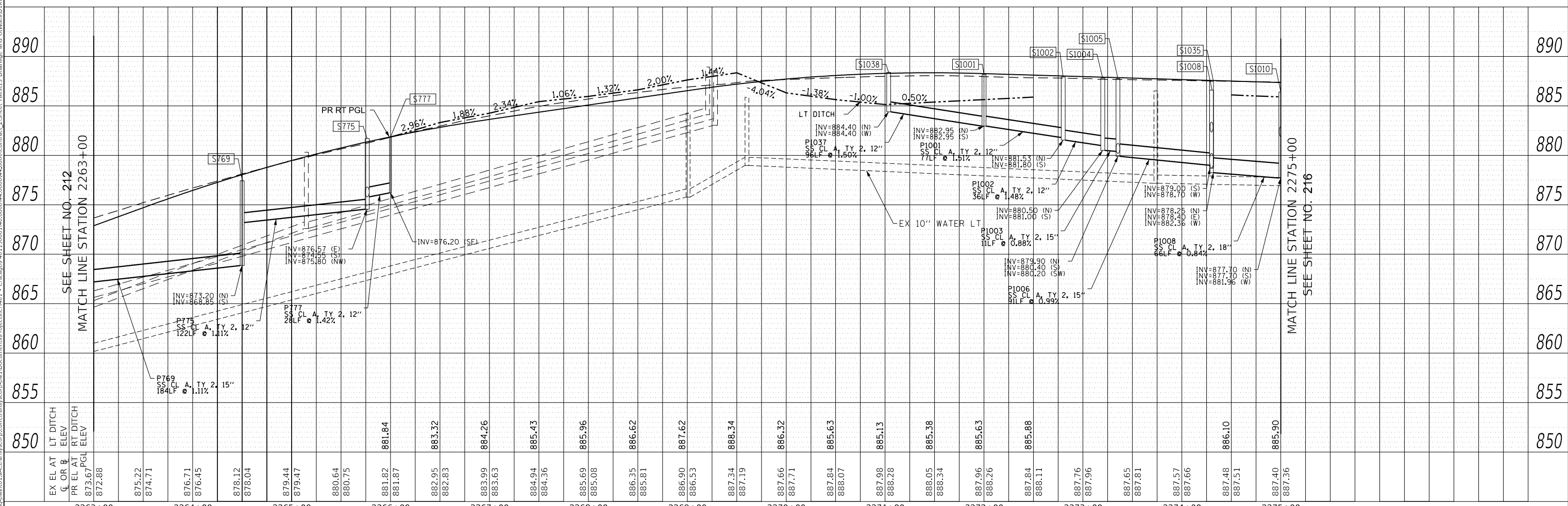
DATE	
BY	
DATE	
BY	

DATE	
BY	
DATE	
BY	

FILE NAME: p:\bl\pawm101\pawm101\transyscorp.com\transyscorp\paw\Documents\Projects\CH401 - Chicago04113006\146_000\04_000\04_000\Contract_25\Sheet_Files\13_Drainage and Utilities\03XXXXX-shd-01-11.dgn



LEGEND	
	PROPOSED PIPE
	PROPOSED STRUCTURE
	STRUCTURE TO BE ADJUSTED
	STRUCTURE TO BE RECONSTRUCTED
	STRUCTURE IDENTIFIED ON OTHER CORRESPONDING SHEET
	PIPE IDENTIFIED ON OTHER CORRESPONDING SHEET



USER NAME	= Mibeening	DESIGNED	- BLA	REVISED	- 7/19/2024
D1XXXXX-shd-DU-11.dgn		DRAWN	- BLA	REVISED	-
PLOT SCALE = 100.0000' / in.		CHECKED	- BLA	REVISED	-
PLOT DATE = 7/23/2024		DATE	- 6/14/2024	REVISED	-

STATE OF ILLINOIS
DEPARTMENT OF TRANSPORTATION

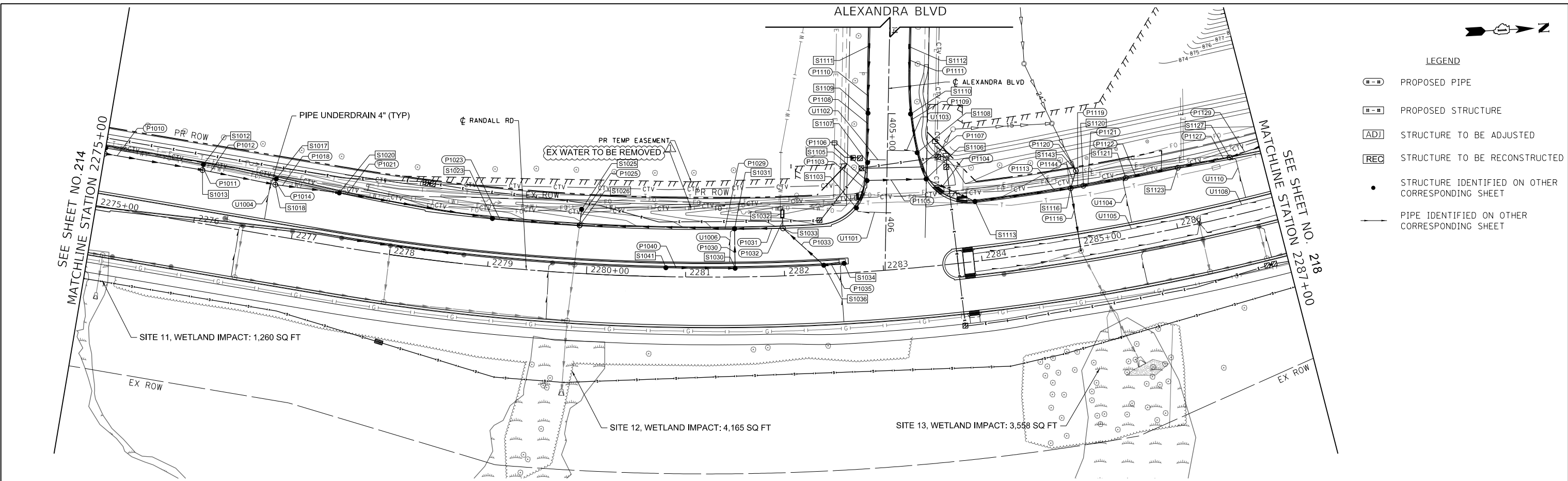
RANDALL ROAD DRAINAGE AND UTILITY - LEFT SIDE
SCALE: 1" = 50' HORIZ
1" = 5' VERT SHEET 11 OF 39 SHEETS STA. 2263+00 TO STA. 2275+00

F.A.P. RTE.	SECTION	COUNTY	TOTAL SHEETS	SHEET NO.
336	06-00329-02-PW	MCHENRY	735	214
CONTRACT NO. 61J93				
ILLINOIS		FED. AID PROJECT		

PLAN	SURVEYED	DATE
	PLOTTED	BY
	ALIGNED	
	CHECKED	
	NOTED	
	CADD FILE NAME	
	NO.	

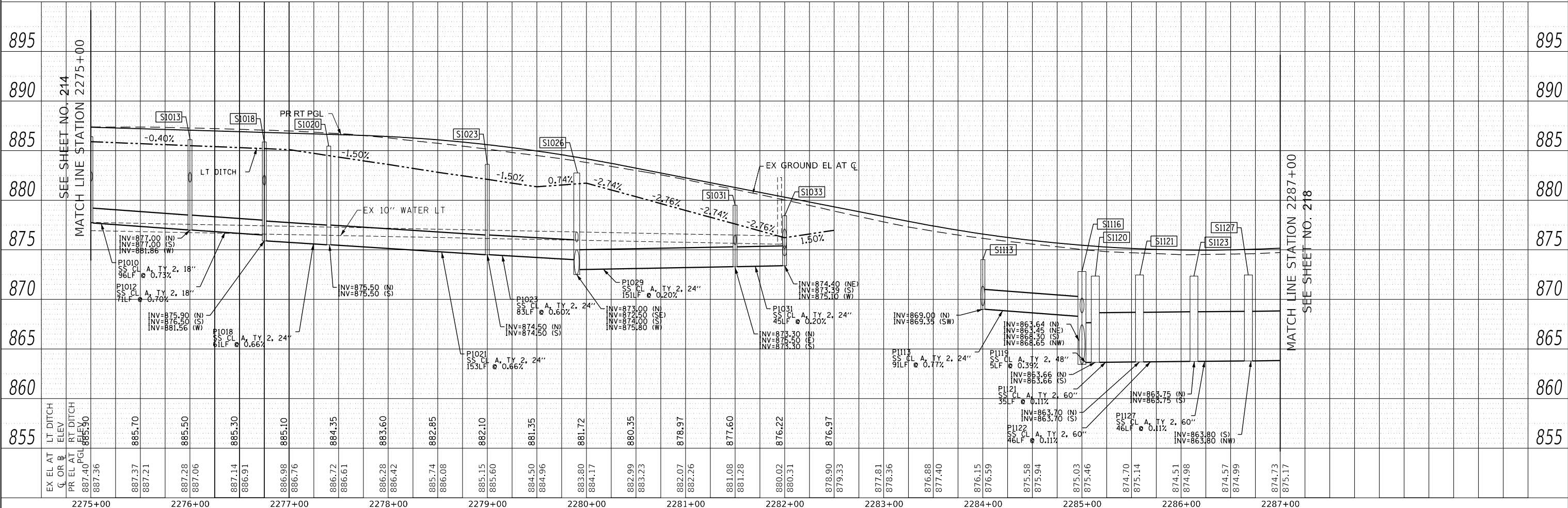
PROFILE	SURVEYED	DATE
	PLOTTED	BY
	GRADES CHECKED	
	STRUCTURE NOTATIONS CHECKED	
	NO.	

FILE NAME: p:\blaweb\proj\01\transcorp\transcorp\proj\01\Documents\Projects\Ch017 - Chicago\4013130061\4013130061\4013130061\0004_0004_0004\Contract_2\Sheet Files\13 Drainage and Utilities\DU\XXXX-sht-DU-13.dgn



LEGEND

- PROPOSED PIPE
- PROPOSED STRUCTURE
- STRUCTURE TO BE ADJUSTED
- STRUCTURE TO BE RECONSTRUCTED
- STRUCTURE IDENTIFIED ON OTHER CORRESPONDING SHEET
- PIPE IDENTIFIED ON OTHER CORRESPONDING SHEET



USER NAME = Mibeening	DESIGNED - BLA	REVISED - 7/19/2024
D:\XXXXX-sht-DU-13.dgn	DRAWN - BLA	REVISED -
PLOT SCALE = 100.0001' / in.	CHECKED - BLA	REVISED -
PLOT DATE = 7/23/2024	DATE - 6/14/2024	REVISED -

**STATE OF ILLINOIS
DEPARTMENT OF TRANSPORTATION**

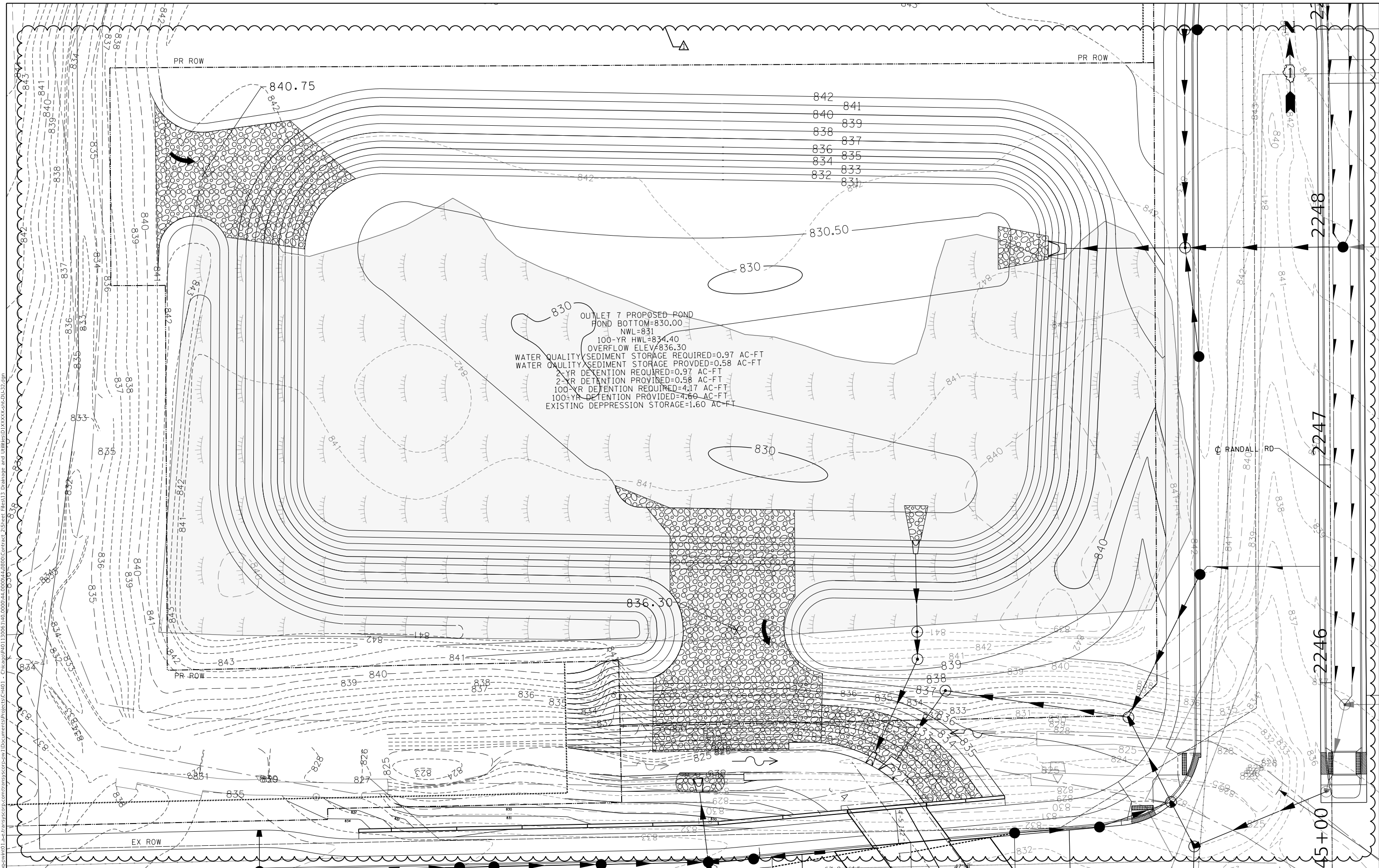
RANDALL ROAD DRAINAGE AND UTILITY - LEFT SIDE

F.A.P RTE.	SECTION	COUNTY	TOTAL SHEETS	SHEET NO.
336	06-00329-02-PW	MCHENRY	735	216
CONTRACT NO. 61J93			ILLINOIS FED. AID PROJECT	

SCALE: 1"=50' HORIZ / 1"=5' VERT SHEET 13 OF 39 SHEETS STA. 2275+00 TO STA. 2287+00



FILE NAME: p:\projects\01_1621\transportation\projects\CH401 - Chicago\04\113006\1\0_0000\4\0000\4\0000\DU-32.dgn



830

OUTLET 7 PROPOSED POND
 POND BOTTOM=830.00
 NWL=831
 100-YR HWL=834.40
 OVERFLOW ELEV=836.30
 WATER QUALITY SEDIMENT STORAGE REQUIRED=0.97 AC-FT
 WATER QUALITY SEDIMENT STORAGE PROVIDED=0.58 AC-FT
 2-YR DETENTION PROVIDED=0.58 AC-FT
 100-YR DETENTION REQUIRED=4.17 AC-FT
 100-YR DETENTION PROVIDED=4.60 AC-FT
 EXISTING DEPRESSION STORAGE=1.60 AC-FT

STATE OF ILLINOIS
 DEPARTMENT OF TRANSPORTATION

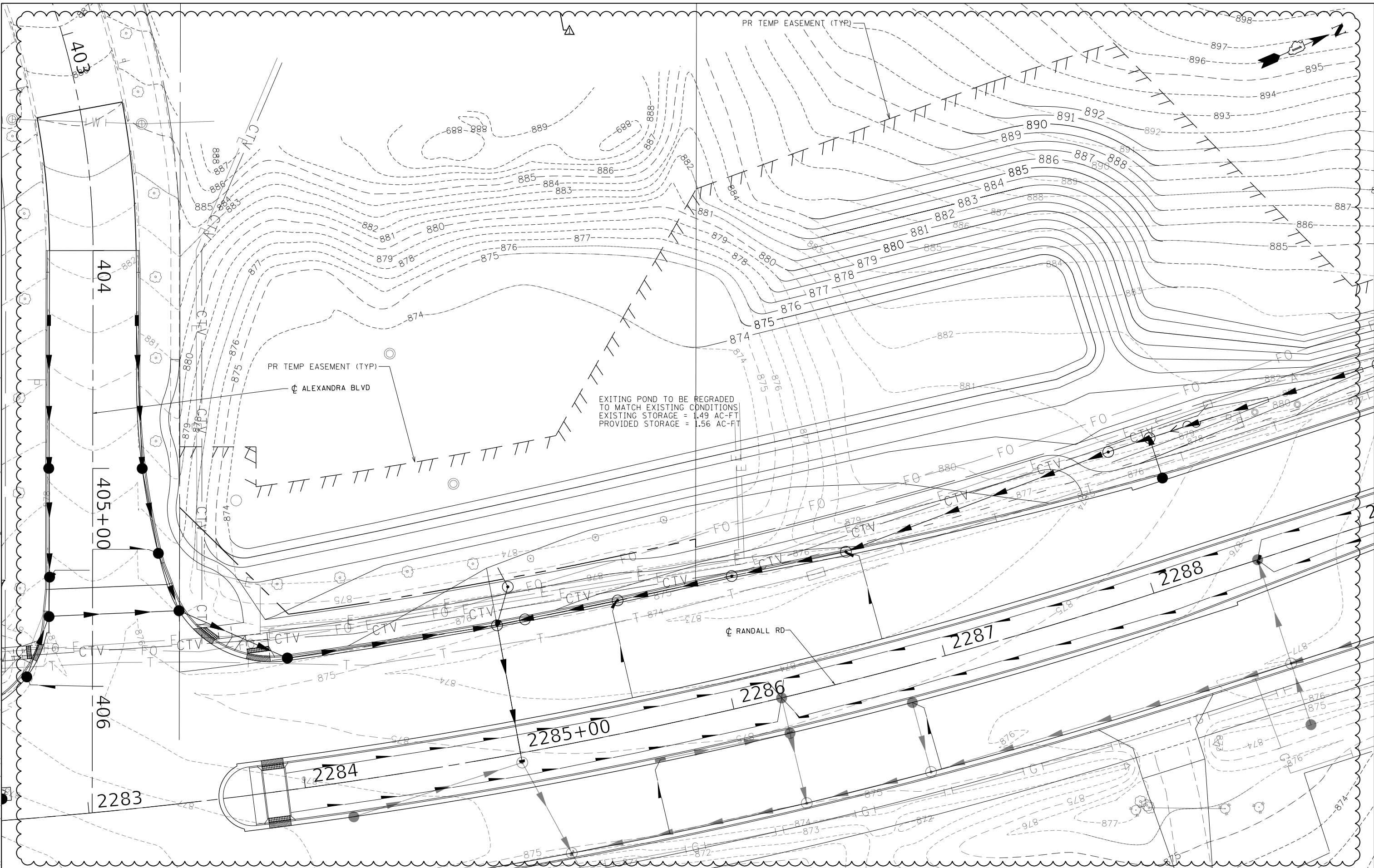
DETENTION POND GRADING PLAN
 OUTLET 7

SCALE: 1" = 20' SHEET 33 OF 39 SHEETS STA. TO STA.

USER NAME = Mibeening D:\XXXXX\ehh-DU-32.dgn	DESIGNED - MRQ DRAWN - MRQ	REVISED - 7/19/2024 REVISED - REVISED -
PLOT SCALE = 40.0000' / in. PLOT DATE = 7/23/2024	CHECKED - UPDATE DATE - 6/14/2024	REVISED - REVISED -

F.A.P. RTE. 336	SECTION 06-00329-02-PW	COUNTY MCHENRY	TOTAL SHEETS 735	SHEET NO. 236
ILLINOIS FED. AID PROJECT			CONTRACT NO. 61J93	

FILE NAME: p:\bl\blm\blm01_bla\trans\scop\blm01\Documents\Project\blm01\Drawings and Utilities\blm01\blm01-33.dgn



USER NAME = Mibeening	DESIGNED - MRQ	REVISED - 7/19/2024
D:\XXXXX-sht-DU-33.dgn	DRAWN - MRQ	REVISED -
PLOT SCALE = 40.0000' / in.	CHECKED - UPDATE	REVISED -
PLOT DATE = 7/23/2024	DATE - 6/14/2024	REVISED -

**STATE OF ILLINOIS
DEPARTMENT OF TRANSPORTATION**

DETENTION POND GRADING PLAN EXISTING POND	
SCALE: 1" = 20'	SHEET 34 OF 39 SHEETS STA. TO STA.

F.A.P. RTE. 336	SECTION 06-00329-02-PW	COUNTY MCHENRY	TOTAL SHEETS 735	SHEET NO. 237
CONTRACT NO. 61J93				
ILLINOIS FED. AID PROJECT				

GENERAL NOTES

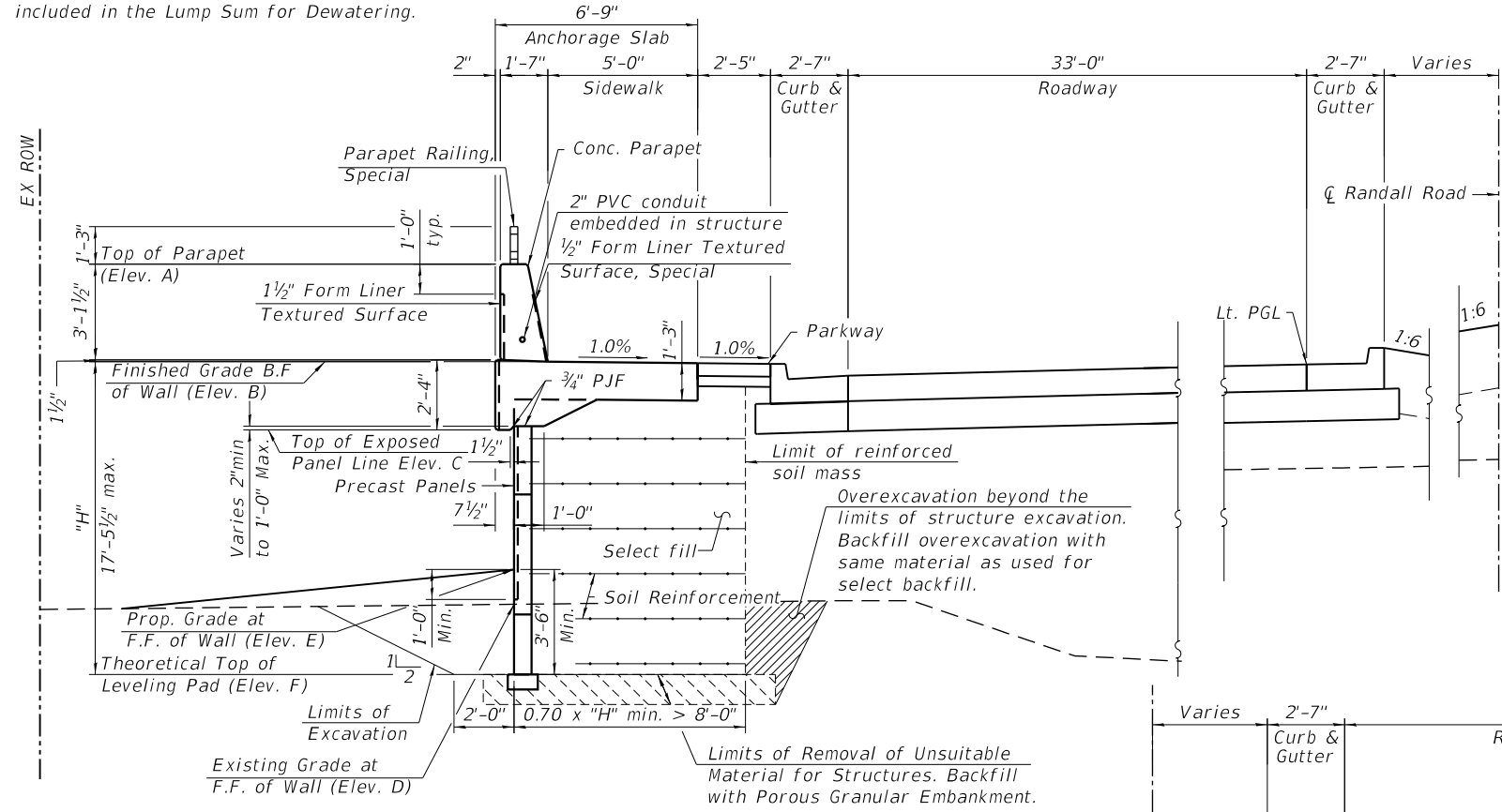
1. Reinforcement bars designated (E) shall be epoxy coated.
2. Form Liner Textured Surface, Special shall be inset into the face of the barrier on the traffic side up to 1/2" deep and 1" wide.
3. The MSE wall supplier's internal stability design shall account for the moment slab's bearing pressure surcharge of 1.0 ksf and horizontal sliding force of 0.5 k/ft of wall.
4. Anti-Graffiti Coating shall be applied to all exposed faces of the parapet and the exposed area of the MSE wall panels.
5. Staining shall be applied to areas of Form Liner Textured Surface, Form Liner Textured Surface, Special, and the precast concrete panels of the MSE wall.
6. All dewatering necessary for the construction of this structure shall be according to the Special Provision for Dewatering and shall be included in the Lump Sum for Dewatering.

INDEX OF SHEETS

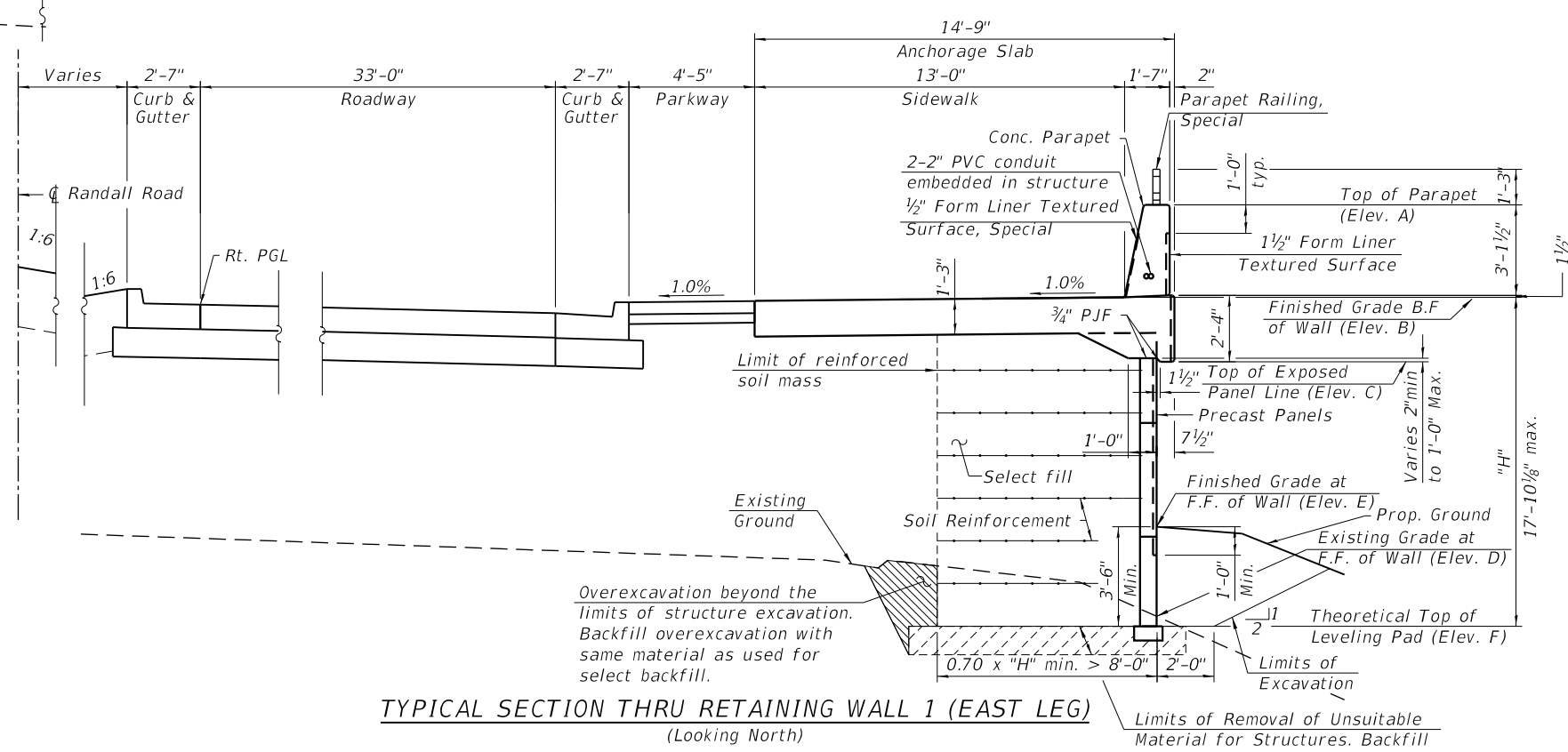
1. General Plan and Elevation
2. General Data 1
3. General Data 2
4. Anchorage Slab Plan and Elevation 1
5. Anchorage Slab Plan and Elevation 2
6. Anchorage Slab Plan and Elevation 3
7. Anchorage Slab Plan and Elevation 4
8. Anchorage Slab Section and Details 1
9. Anchorage Slab Section and Details 2
10. Railing Details
11. Boring Logs 1
12. Boring Logs 2
13. Boring Logs 3
14. Boring Logs 4
15. Boring Logs 5

TOTAL BILL OF MATERIAL

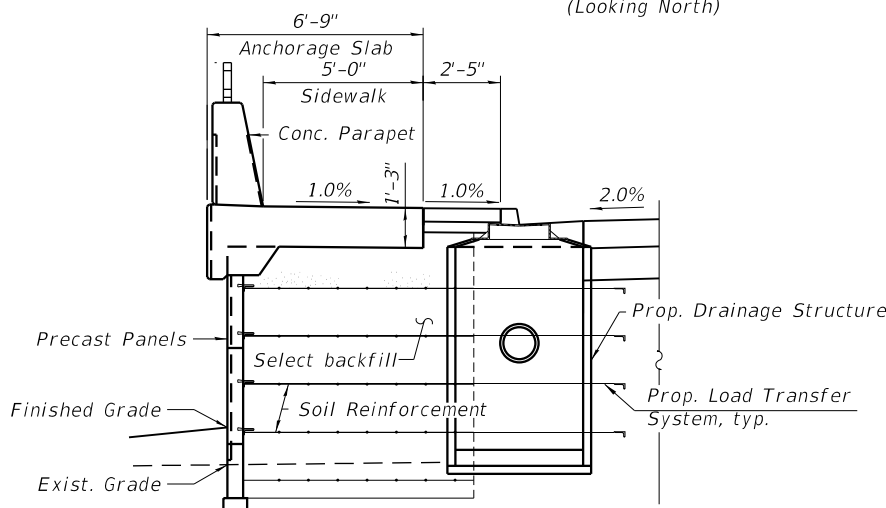
Item	Unit	Total
Porous Granular Embankment	Cu. Yd.	110
Structure Excavation	Cu. Yd.	692
Removal and Disposal of Unsuitable Material for Structures	Cu. Yd.	110
Concrete Superstructure	Cu. Yd.	327.1
Form Liner Textured Surface	Sq. Ft.	2,280
Protective Coat	Sq. Yd.	599
Reinforcement Bars, Epoxy Coated	Pound	51,070
Mechanically Stabilized Earth Retaining Wall	Sq. Ft.	5,080
Temporary Mechanically Stabilized Earth Retaining Wall	Sq. Ft.	390
Anti-Graffiti Coating	Sq. Ft.	8,370
Form Liner Textured Surface, Special	Sq. Ft.	1,216
Staining Concrete Structures	Sq. Ft.	6,306
Parapet Railing, Special	Foot	529



TYPICAL SECTION THRU RETAINING WALL 1 (WEST LEG)
(Looking North)



TYPICAL SECTION THRU RETAINING WALL 1 (EAST LEG)
(Looking North)



DRAINAGE DETAIL AT BACK OF MSE WALL
(West leg shown, east leg similar)
(Looking North)

USER NAME = tjallen	DESIGNED - JE	REVISED - 7/19/2024
	DRAWN - JE	REVISED -
PLOT SCALE = 6.0000' / in.	CHECKED - TJA	REVISED -
PLOT DATE = 7/19/2024	DATE - 6/14/2024	REVISED -

**STATE OF ILLINOIS
DEPARTMENT OF TRANSPORTATION**

**GENERAL DATA 1
STRUCTURE NO. 056-W301**

SHEET 52-02 OF 52-15 SHEETS

F.A.P. RTE.	SECTION	COUNTY	TOTAL SHEETS	SHEET NO.
336	06-00329-02-PW	MCHENRY	735	454
			CONTRACT NO. 61193	
		ILLINOIS FED. AID PROJECT		

GENERAL NOTES

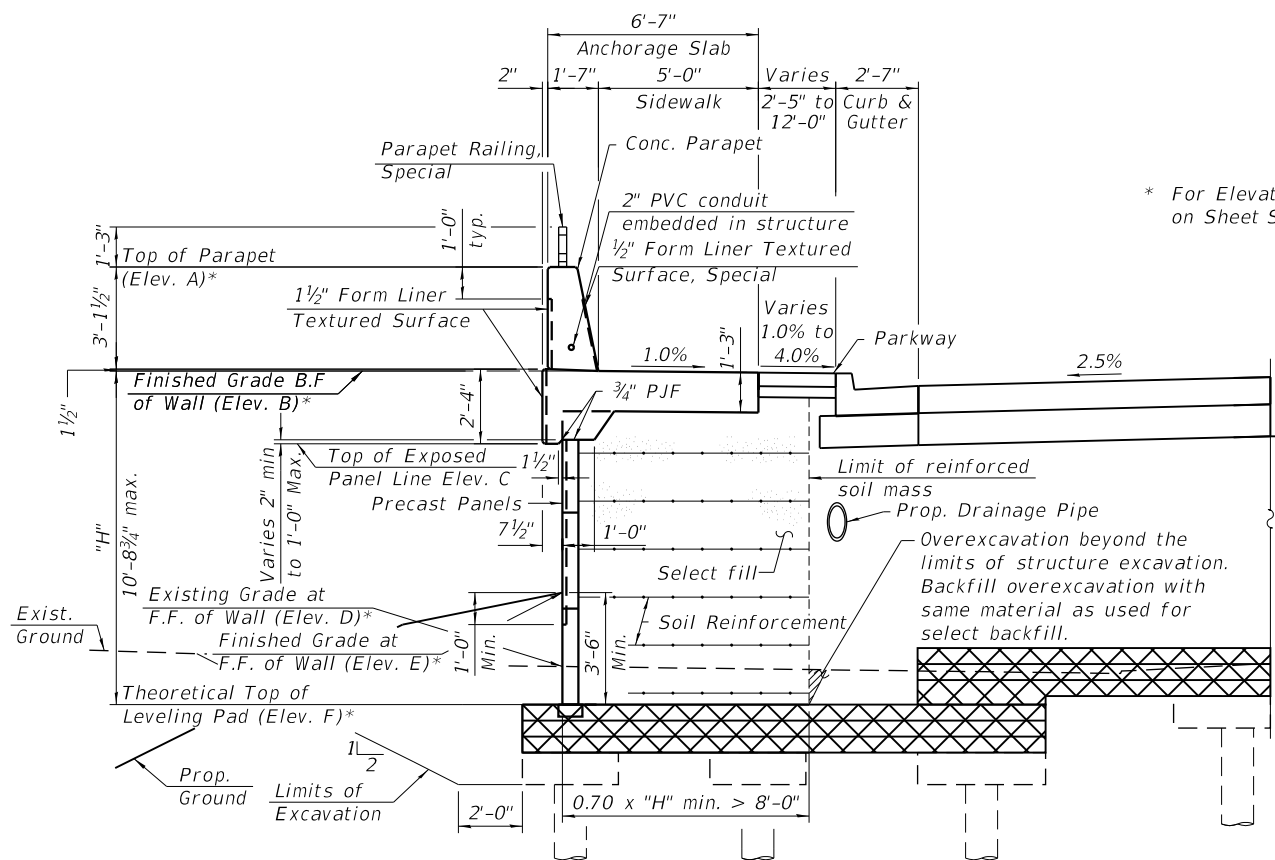
1. Reinforcement bars designated (E) shall be epoxy coated.
2. Form Liner Textured Surface, Special shall be inset into the face of the barrier on the traffic side up to 1/2" deep and 1" wide.
3. The MSE wall supplier's internal stability design shall account for the moment slab's bearing pressure surcharge of 1.0 ksf and horizontal sliding force of 0.5 k/ft of wall.
4. Anti-Graffiti Coating shall be applied to all exposed faces of the parapet and the exposed area of the MSE wall panels.
5. Staining shall be applied to areas of Form Liner Textured Surface, Form Liner Textured Surface, Special, and the precast concrete panels of the MSE wall.
6. All dewatering necessary for the construction of this structure shall be according to the Special Provision for Dewatering and shall be included in the Lump Sum for Dewatering.
7. After the embankment is finished and before the moment slab is constructed, monitor settlement at the platforms twice a week for four weeks minimum.

INDEX OF SHEETS

- | | |
|--|--|
| 1. General Plan and Elevation 1 | 35. Timber Pile Ground Improvement Layout 1 |
| 2. General Plan and Elevation 2 | 36. Timber Pile Ground Improvement Layout 2 |
| 3. General Plan and Elevation 3 | 37. Timber Pile Ground Improvement Layout 3 |
| 4. General Plan and Elevation 4 | 38. Timber Pile Ground Improvement Details 1 |
| 5. General Plan and Elevation 5 | 39. Timber Pile Ground Improvement Details 2 |
| 6. General Plan and Elevation 6 | 40. Boring Logs 1 |
| 7. General Data 1 | 41. Boring Logs 2 |
| 8. General Data 2 | 42. Boring Logs 3 |
| 9. General Data 3 | 43. Boring Logs 4 |
| 10. General Data 4 | 44. Boring Logs 5 |
| 11. Stage Construction Details | 45. Boring Logs 6 |
| 12. Anchorage Slab Plan and Elevation 1 | 46. Boring Logs 7 |
| 13. Anchorage Slab Plan and Elevation 2 | 47. Boring Logs 8 |
| 14. Anchorage Slab Plan and Elevation 3 | 48. Boring Logs 9 |
| 15. Anchorage Slab Plan and Elevation 4 | 49. Boring Logs 10 |
| 16. Anchorage Slab Plan and Elevation 5 | 50. Boring Logs 11 |
| 17. Anchorage Slab Plan and Elevation 6 | 51. Boring Logs 12 |
| 18. Anchorage Slab Plan and Elevation 7 | 52. Boring Logs 13 |
| 19. Anchorage Slab Plan and Elevation 8 | 53. Boring Logs 14 |
| 20. Anchorage Slab Plan and Elevation 9 | 54. Boring Logs 15 |
| 21. Anchorage Slab Plan and Elevation 10 | 55. Boring Logs 16 |
| 22. Anchorage Slab Plan and Elevation 11 | 56. Boring Logs 17 |
| 23. Anchorage Slab Plan and Elevation 12 | 57. Boring Logs 18 |
| 24. Anchorage Slab Plan and Elevation 13 | 58. Boring Logs 19 |
| 25. Anchorage Slab Plan and Elevation 14 | 59. Boring Logs 20 |
| 26. Anchorage Slab Plan and Elevation 15 | 60. Boring Logs 21 |
| 27. Anchorage Slab Plan and Elevation 16 | 61. Boring Logs 22 |
| 28. Anchorage Slab Plan and Elevation 17 | 62. Boring Logs 23 |
| 29. Anchorage Slab Plan and Elevation 18 | 63. Boring Logs 24 |
| 30. Anchorage Slab Plan and Elevation 19 | 64. Boring Logs 25 |
| 31. Anchorage Slab Plan and Elevation 20 | 65. Boring Logs 26 |
| 32. Anchorage Slab Details 1 | 66. Boring Logs 27 |
| 33. Anchorage Slab Details 2 | 67. Boring Logs 28 |
| 34. Railing Details | |

TOTAL BILL OF MATERIAL

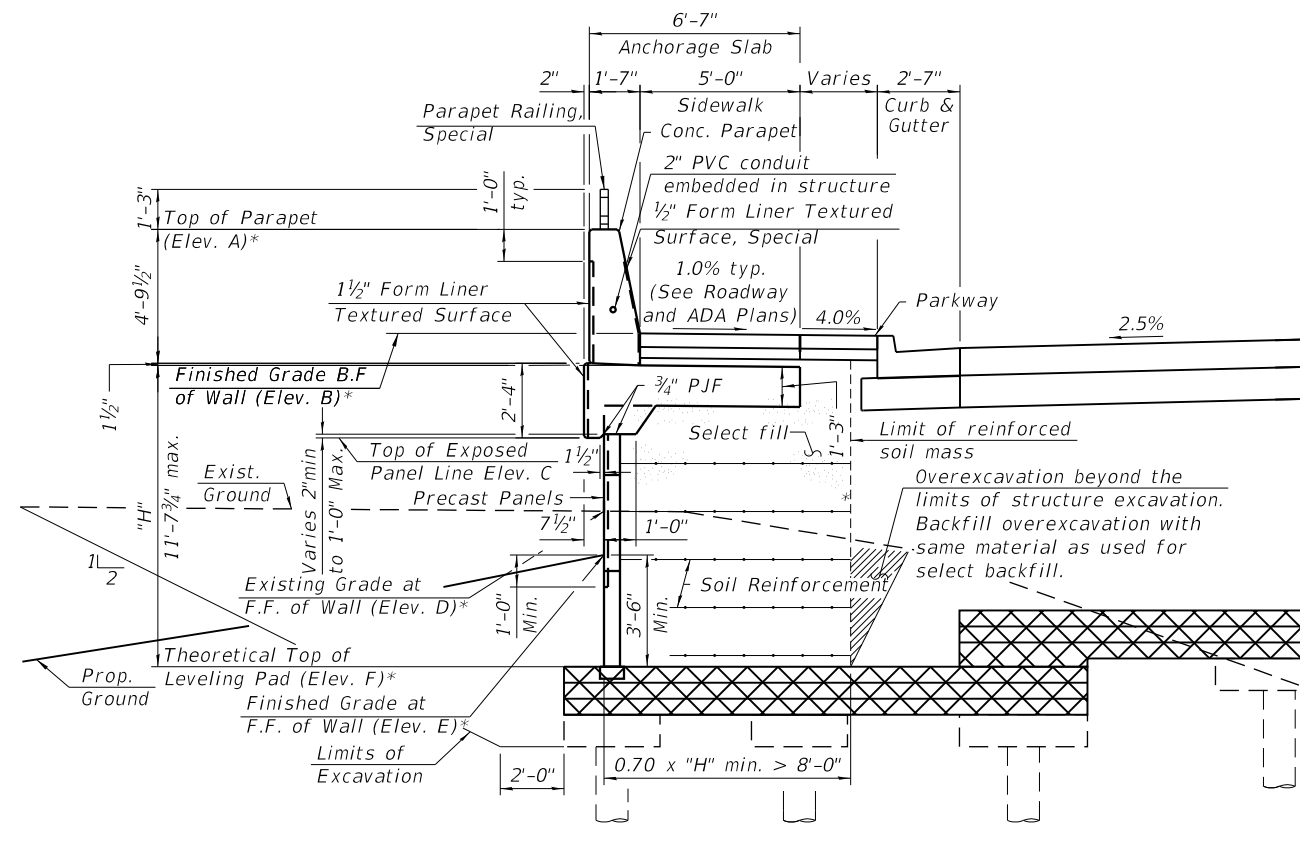
Item	Unit	Total
Granular Embankment, Special	Cu. Yd.	6,814
Porous Granular Embankment	Cu. Yd.	331
Removal of Existing Structures No. 1	Each	1
Structure Excavation	Cu. Yd.	4,041
Removal and Disposal of Unsuitable Material for Structures	Cu. Yd.	340
Concrete Superstructure	Cu. Yd.	2,572.2
Form Liner Textured Surface	Sq. Ft.	18,940
Protective Coat	Sq. Yd.	5,088
Precast Concrete Caps	Each	2,177
Reinforcement Bars, Epoxy Coated	Pound	459,910
Driving Piles	Foot	76,904
Furnishing Treated Piles 20.1 to 38 Feet	Foot	44,914
Furnishing Treated Piles Over 38 Feet	Foot	31,990
Temporary Soil Retention System	Sq. Ft.	10,840
Mechanically Stabilized Earth Retaining Wall	Sq. Ft.	27,340
Temporary Mechanically Stabilized Earth Retaining Wall	Sq. Ft.	11,150
Biaxial Geogrid	Sq. Yd.	24,647
Anti-Graffiti Coating	Sq. Ft.	56,060
Form Liner Textured Surface, Special	Sq. Ft.	11,866
Staining Concrete Structures	Sq. Ft.	46,941
Parapet Railing, Special	Foot	1,618
Test Pile Timber	Each	16
Settlement Platforms	Each	5



* For Elevations, See Table 1 on Sheet S3-10 of S3-67.

TYPICAL SECTION THRU RETAINING WALL WITH SLAB AT GRADE AT GROUND IMPROVEMENT

(West leg shown, east leg similar)
(Looking North)



TYPICAL SECTION THRU RETAINING WALL WITH BURIED SLAB AT GROUND IMPROVEMENT

(West leg shown, east leg similar)
(Looking North)

TRANSYSTEMS
1475 EAST WOODFIELD ROAD, SUITE 600
SCHAMBURG, ILLINOIS 60173
(847) 605-9600

FILE NAME: p:\proj\hcmint01_pae.ctb;transyscorp.com\transyscorp\pwa\Documents\Projects\CH401 - Chicago\04\13\2025\140.0000\44.0000\44.0000\Contract_25\Sheet_Files\33_Structural_Sheets\TSC_Sheet333_Structural_Sheet333-003-WALL2-General\Draw1

USER NAME = tjallen	DESIGNED - JE	REVISED - 7/19/2024
PLOT SCALE = 6:0" = 1" / in.	CHECKED - MDS	
PLOT DATE = 7/19/2024	DATE - 6/14/2024	

**STATE OF ILLINOIS
DEPARTMENT OF TRANSPORTATION**

**GENERAL DATA 1
STRUCTURE NO. 056-W302**

SHEET S3-07 OF S3-67 SHEETS

F.A.P RTE. 336	SECTION 06-00329-02-PW	COUNTY MCHENRY	TOTAL SHEETS 735	SHEET NO. 474
CONTRACT NO. 61193			ILLINOIS FED. AID PROJECT	

GENERAL NOTES

1. Reinforcement bars designated (E) shall be epoxy coated.
2. Form Liner Textured Surface, Special shall be insert into the face of the barrier on the traffic side up to 1/2" deep and 1" wide.
3. The MSE wall supplier's internal stability design shall account for the moment slab's bearing pressure surcharge of 1.0 ksf and horizontal sliding force of 0.5 k/ft of wall.
4. Anti-Graffiti Coating shall be applied to all exposed faces of the parapet and the exposed area of the MSE wall panels.
5. Staining shall be applied to areas of Form Liner Textured Surface, Form Liner Textured Surface, Special, and the precast concrete panels of the MSE wall.
6. All dewatering necessary for the construction of this structure shall be according to the Special Provision for Dewatering and shall be included in the Lump Sum for Dewatering.
7. F.F. = Front Face
8. B.F. = Back Face

INDEX OF SHEETS

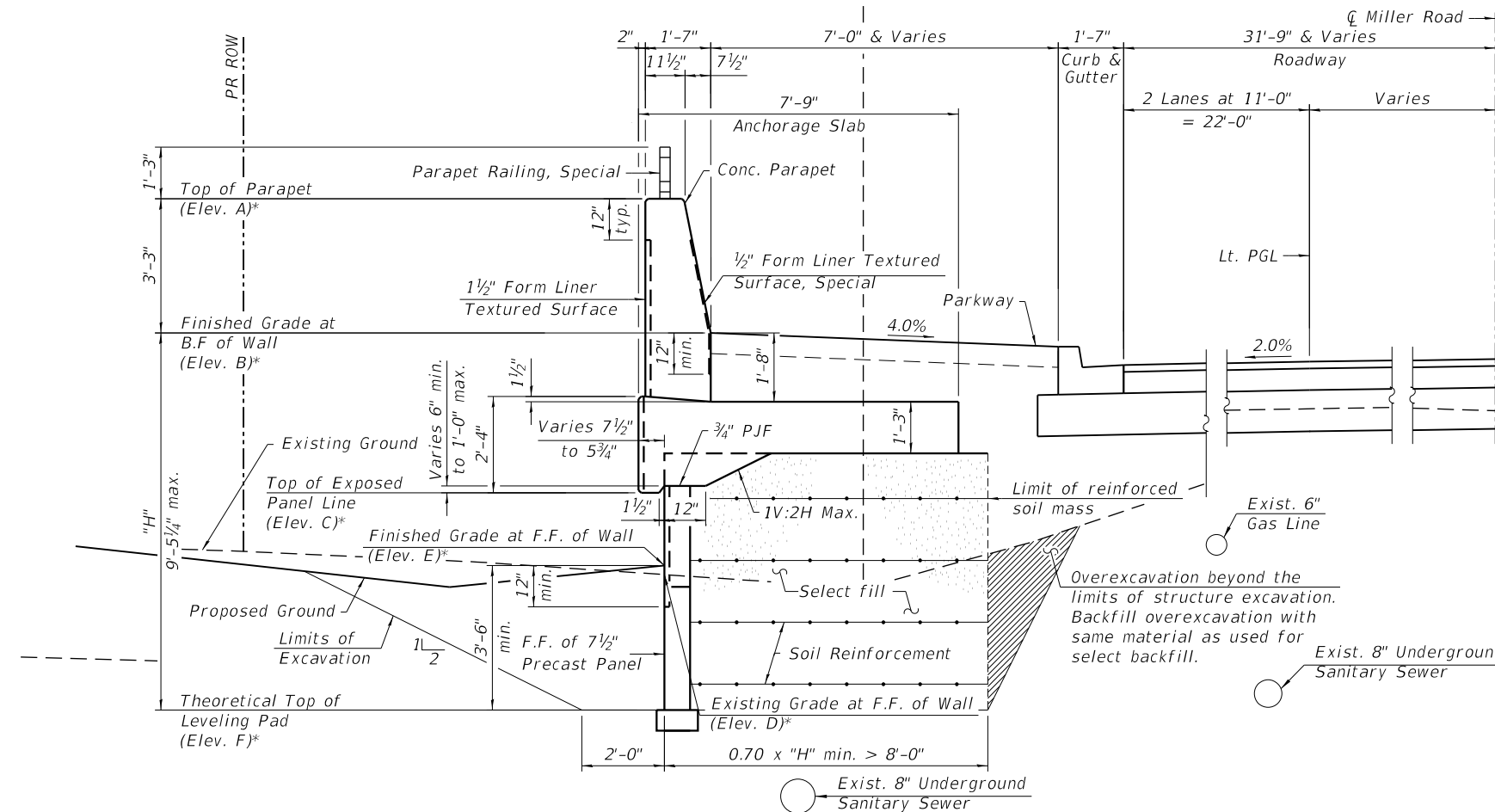
1. General Plan and Elevation 1
2. General Plan and Elevation 2
3. General Data 1
4. General Data 2
5. Anchorage Slab Plan and Elevation 1
6. Anchorage Slab Plan and Elevation 2
7. Anchorage Slab Plan and Elevation 3
8. Anchorage Slab Plan and Elevation 4
9. Anchorage Slab Plan and Elevation 5
10. Anchorage Slab Details
11. Parapet Railing, Special
12. Boring Logs 1
13. Boring Logs 2
14. Boring Logs 3

TOTAL BILL OF MATERIAL

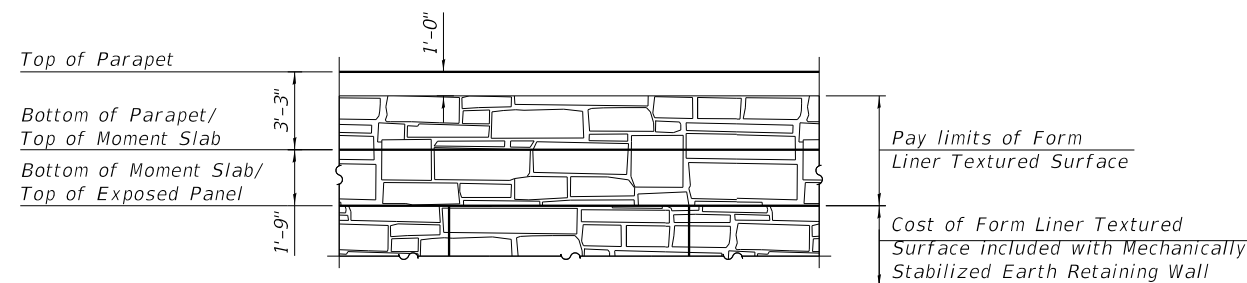
Item	Unit	Total
Porous Granular Embankment	Cu. Yd.	570
Removal of Existing Structures No. 2	Each	1
Structure Excavation	Cu. Yd.	1,011
Removal and Disposal of Unsuitable Material for Structures	Cu. Yd.	570
Concrete Superstructure	Cu. Yd.	454.6
Form Liner Textured Surface	Sq. Ft.	2,880
Protective Coat	Sq. Yd.	317
Reinforcement Bars, Epoxy Coated	Pound	77,330
Mechanically Stabilized Earth Retaining Wall	Sq. Ft.	3,141
Noise Abatement Wall Anchor Rod Assembly	Each	37
Anti-Graffiti Coating	Sq. Ft.	8,372
Form Liner Textured Surface, Special	Sq. Ft.	2,352
Staining Concrete Structures	Sq. Ft.	8,404
Parapet Railing, Special	Foot	82

TABLE 1 - WALL ELEVATIONS

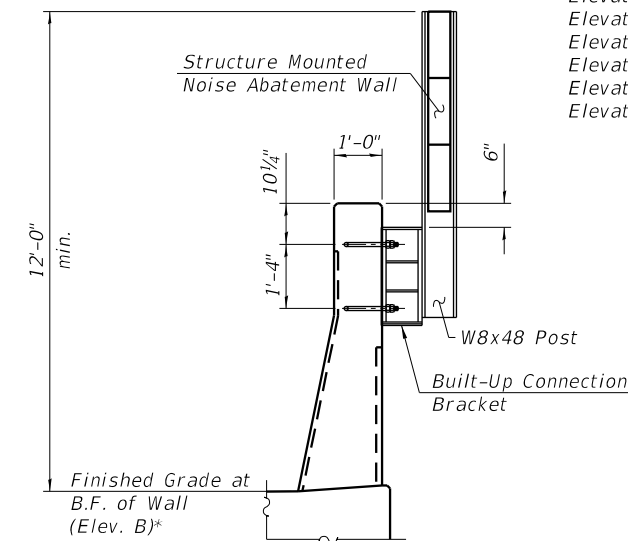
Station	Offset	Elev. A	Elev. B	Elev. C	Elev. D	Elev. E	Elev. F
120+62.19	41.46' Lt.	836.46	835.21	831.34	830.46	835.21	828.88
120+32.19	41.46' Lt.	837.95	834.70	830.82	829.49	830.74	827.24
120+02.19	41.46' Lt.	837.66	834.41	830.54	828.50	829.12	825.62
119+72.28	41.46' Lt.	837.62	834.37	830.49	829.22	828.38	824.88
119+72.28	41.46' Lt.	840.37	834.37	830.49	829.22	828.38	824.88
119+42.83	47.61' Lt.	840.76	834.76	830.89	829.91	829.79	826.29
119+13.39	53.76' Lt.	841.39	835.39	831.51	829.76	830.14	826.64
118+99.43	59.03' Lt.	841.32	835.32	831.44	829.26	830.04	826.54
118+86.20	69.47' Lt.	842.38	836.38	832.51	829.28	829.96	826.46
118+77.90	81.87' Lt.	842.66	836.66	832.79	829.23	829.90	826.40
2245+74.88	76.60' Rt.	842.66	836.66	834.45	829.23	829.88	826.38
2245+93.70	73.43' Rt.	843.57	837.57	835.36	828.71	829.42	825.92
2246+26.90	72.86' Rt.	844.24	838.24	836.03	828.82	829.31	825.81
2246+56.56	77.88' Rt.	844.98	838.98	836.77	829.09	829.78	826.28
2246+86.65	77.88' Rt.	845.70	839.70	837.49	830.32	831.70	828.20
2247+16.74	77.88' Rt.	846.42	840.42	838.21	831.72	833.43	829.93
2247+46.57	77.88' Rt.	847.14	841.14	838.93	833.27	834.99	831.49
2247+76.23	72.86' Rt.	847.80	841.80	839.59	835.67	836.82	833.32
2248+06.15	72.87' Rt.	848.52	842.52	840.31	837.45	838.57	835.07
2248+36.15	72.87' Rt.	849.24	843.24	841.03	839.61	839.79	836.29
2248+66.15	72.88' Rt.	849.96	843.96	841.75	841.59	843.96	837.65



CROSS SECTION THRU MILLER ROAD
(Sta. 119+72.13 to 120+62.20)
(Looking East)



FORM LINER DETAIL



SECTION THROUGH NOISE ABATEMENT WALL

Elevation A - Top of Parapet
Elevation B - Finished Grade at Back Face of Wall
Elevation C - Top of Exposed Panel Line
Elevation D - Existing Grade at Front Face of Wall
Elevation E - Proposed Grade at Front Face of Wall
Elevation F - Theoretical Top of Leveling Pad

USER NAME = tjallen	DESIGNED - IIP	REVISED - Δ 7/19/2024
	DRAWN - IIP	REVISED -
PLOT SCALE = 6.0000' / in.	CHECKED - MDS	REVISED -
PLOT DATE = 7/19/2024	DATE - 6/14/2024	REVISED -

F.A.P. RTE.	SECTION	COUNTY	TOTAL SHEETS	SHEET NO.
336	06-00329-02-PW	MCHENRY	735	566
CONTRACT NO. 61193			ILLINOIS FED. AID PROJECT	