

F.A.U. RTE.	SECTION	COUNTY	TOTAL SHEETS	SHEET NO.
2749	22-00245-00-RS	LAKE	16	1
		ILLINOIS	CONTRACT NO. 61K51	

08-02-2024 LETTING ITEM 004

FOR INDEX OF SHEETS, SEE SHEET NO. 2

FOR INDEX OF HIGHWAY STANDARDS, SEE SHEET NO. 2

STATE OF ILLINOIS DEPARTMENT OF TRANSPORTATION PLANS FOR PROPOSED FEDERAL AID HIGHWAY

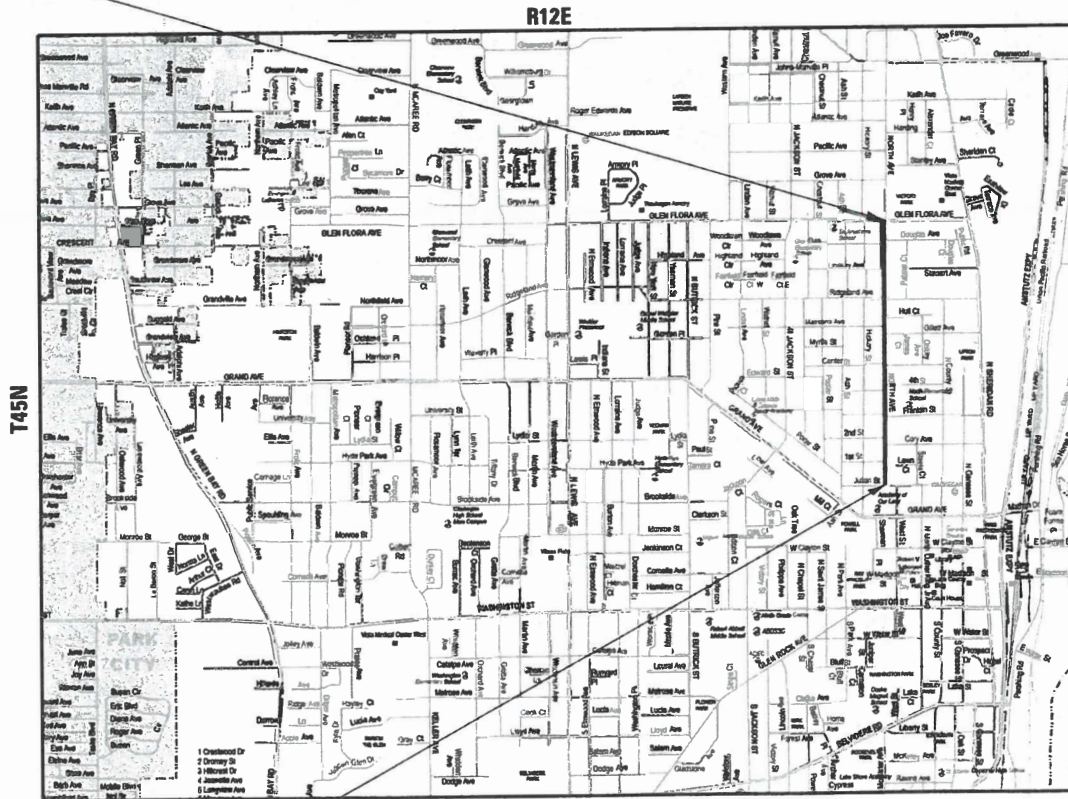
**FAU 2749 NORTH AVE
FROM JULIAN ST TO GLEN FLORA AVE
SECTION NO: 22-00245-00-RS
RESURFACING
PROJECT: 2UH6(579)
CITY OF WAUKEGAN
LAKE COUNTY
C-91-204-24**

TRAFFIC DATA

NORTH AVE
MAJOR COLLECTOR
POSTED SPEED: 30 MPH
2015 ADT: 3,100

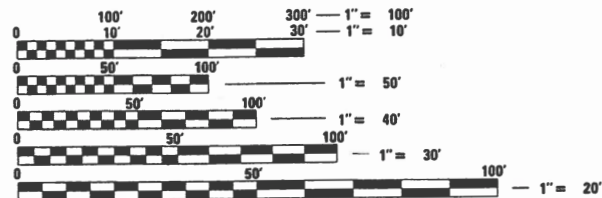


**END RESURFACING
NORTH AVENUE
STA 244 + 21**



**BEGIN RESURFACING
NORTH AVENUE
STA 200 + 31**

LOCATION MAP
NOT TO SCALE
GROSS LENGTH = 4,390 FT. = 0.83 MILE
NET LENGTH = 4,390 FT. = 0.83 MILE



FULL SIZE PLANS HAVE BEEN PREPARED USING STANDARD ENGINEERING SCALES. REDUCED SIZED PLANS WILL NOT CONFORM TO STANDARD SCALES. IN MAKING MEASUREMENTS ON REDUCED PLANS, THE ABOVE SCALES MAY BE USED.

J.U.L.I.E. DESIGN STAGE REQUEST
DIG. No. A223611058



CONTACT JULIE AT 811 OR 800-892-0123 WITH THE FOLLOWING:
COUNTY = LAKE
CITY-TWNSHP. = WAUKEGAN - ZION
SEC. & 1/4 SEC. NO. = 16, 21
48 HOURS (2 working days) BEFORE YOU DIG

CONTRACT NO. 61K51

BAXTER & WOODMAN
Consulting Engineers



4/17/24
PROJECT ENGINEER
"LICENSE EXPIRES 11-30-2025"

STATE OF ILLINOIS DEPARTMENT OF TRANSPORTATION DIVISION OF HIGHWAYS	
APPROVED	4/19/24
<i>Jesus Alvarado, P.E.</i> CITY ENGINEER, CITY OF WAUKEGAN	
PASSED	MAY 28, 2024 D.P. [Signature]
DISTRICT 1 ENGINEER OF LOCAL ROADS AND STREETS	
RELEASING FOR BID BASED ON LIMITED REVIEW	MAY 28, 2024 [Signature]
REGIONAL ENGINEER	

**PRINTED BY THE AUTHORITY
OF THE STATE OF ILLINOIS**

FEDERAL AID PROGRAM ENGINEER: CARMEN E. RAMOS, P.E., SCHAUMBURG, IL

STATE OF ILLINOIS - PROFESSIONAL DESIGN FIRM
 LICENSE NO. - 184-001121 - EXPIRES 4/30/2025
 jtmiller File Default
 FILE NAME: P:\WAUKC\220047-2022_STP-Projects\CAD\Sheets_Phase II S Sheridan North\220047_SHT-GenNotes.dgn
 ...\\cldrv\p\df-BW_Default.plt
 ...220047_PH II North Pen.tbl
 P:\WAUKC\220047-2022 STP-Projects\CAD\Sheets_Phase II S Sheridan North\220047_SHT-GenNotes.dgn

INDEX OF SHEETS

1	COVER
2	INDEX OF SHEETS, HIGHWAY STANDARDS AND GENERAL NOTES
3 - 4	SUMMARY OF QUANTITIES
5	TYPICAL SECTIONS
6 - 9	ROADWAY PLAN
10	MISCELLANEOUS DETAILS
11 - 16	DISTRICT ONE DETAILS

HIGHWAY STANDARDS

000001-08	STANDARD SYMBOLS, ABBREVIATIONS AND PATTERNS
424001-11	PERPENDICULAR CURB RAMPS FOR SIDEWALKS
442201-03	CLASS C AND D PATCHES
606001-08	CONCRETE CURB TYPE B AND COMBINATION CONCRETE CURB AND GUTTER
701006-05	OFF-RD OPERATIONS, 2L, 2W, 15' (4.5 m) TO 24" (600 mm) FROM PAVEMENT EDGE
701011-04	OFF-RD MOVING OPERATIONS, 2L, 2W, DAY ONLY
701301-04	LANE CLOSURE, 2L, 2W, SHORT TIME OPERATIONS
701311-03	LANE CLOSURE 2L, 2W MOVING OPERATIONS - DAY ONLY
701501-06	URBAN LANE CLOSURE, 2L, 2W, UNDIVIDED
701801-06	SIDEWALK, CORNER OR CROSSWALK CLOSURE
701901-09	TRAFFIC CONTROL DEVICES

DISTRICT ONE DETAILS


BD-08	DETAILS FOR FRAMES AND LIDS ADJUSTMENT WITH MILLING
BD-22	PAVEMENT PATCHING FOR HMA SURFACED PAVEMENT
BD-32	BUTT JOINT AND HMA TAPER DETAILS
TC-10	TRAFFIC CONTROL AND PROTECTION FOR SIDE ROADS, INTERSECTIONS, AND DRIVEWAYS
TC-13	DISTRICT ONE TYPICAL PAVEMENT MARKINGS
TC-22	ARTERIAL ROAD INFORMATION SIGN

GENERAL NOTES

- ALL CONSTRUCTION SHALL BE DONE IN ACCORDANCE WITH THE DETAILS IN THE PLANS, THE SPECIAL PROVISIONS INCLUDED IN THE CONTRACT DOCUMENTS, AND THE FOLLOWING STATE OF ILLINOIS SPECIFICATIONS: "THE STANDARD SPECIFICATIONS FOR ROAD AND BRIDGE CONSTRUCTION" (REFERRED TO AS THE "STANDARD SPECIFICATIONS"), THE "SUPPLEMENTAL SPECIFICATIONS AND RECURRING SPECIAL PROVISIONS", THE "MANUAL ON UNIFORM TRAFFIC CONTROL DEVICES FOR STREETS AND HIGHWAYS", THE "MANUAL OF TEST PROCEDURES FOR MATERIALS" AND THE "STANDARD SPECIFICATIONS FOR WATER AND SEWER MAIN CONSTRUCTION IN ILLINOIS".
- UTILITY LOCATIONS HAVE NOT BEEN SHOWN ON THESE PLANS. THE CONTRACTOR SHALL BE RESPONSIBLE FOR THE PROTECTION OF ALL UNDERGROUND OR SURFACE UTILITIES, INCLUDING SPRINKLER SYSTEMS, EVEN THOUGH THEY MAY NOT BE SHOWN ON THE PLANS
- THE CONTRACTOR SHALL NOTIFY THE CITY PUBLIC WORKS ADMINISTRATOR (847-360-0944) AT LEAST 48 HOURS IN ADVANCE OF BEGINNING WORK TO OBTAIN CITY UTILITY LOCATIONS.
- THE CONTRACTOR MAY OBTAIN MUNICIPAL WATER IN BULK, AT NO CHARGE, AS LONG AS THERE IS NOT A "WATERING BAN" IN EFFECT. THE INDISCRIMINATE USE OF FIRE HYDRANTS IS STRICTLY PROHIBITED. WATER FOR CONSTRUCTION SHALL BE METERED OR OTHERWISE ACCOUNTED FOR AND A DAILY LOG MAINTAINED. THE CONTRACTOR SHALL PROVIDE THE WATER TRUCK AND DRIVER REQUIRED TO OBTAIN AND TRANSPORT THIS WATER. THE CITY RESERVES THE RIGHT TO RESTRICT OR REFUSE THE USE OF CITY WATER IF DEEMED NECESSARY.
- ACCESS TO PRIVATE DRIVEWAYS SHALL BE PROVIDED AT ALL TIMES EXCEPT DURING ACTUAL CONSTRUCTION ADJACENT THERE TO.
- IT WILL BE THE CONTRACTOR'S RESPONSIBILITY TO NOTIFY THE ENGINEER, RESIDENTS AND THE CITY WHEN ACCESS TO DRIVEWAYS WILL BE TEMPORARILY CLOSED DUE TO CURB AND GUTTER AND/OR DRIVEWAY REPLACEMENT. THE CONTRACTOR SHALL DISTRIBUTE NOTICES PROVIDED BY THE CITY TO RESIDENTS AT LEAST 24 HOURS PRIOR TO PLANNED CLOSURE. EVERY EFFORT SHALL BE MADE TO ACCOMMODATE ACCESS TO THESE PROPERTIES INCLUDING KNOCKING ON DOORS WHEN DRIVEWAYS ARE ABOUT TO BE CLOSED.
- THE DAYS PAVING OPERATION SHOULD RESULT IN A SINGLE TRANSVERSE JOINT. ANY COLD LONGITUDINAL JOINTS WILL NOT BE ACCEPTED. PROVIDING A SINGLE TRANSVERSE JOINT SHALL BE ACCOMPLISHED BY PAVING ONE LANE OF SUFFICIENT LENGTH THAT WILL ALLOW FOR THE PAVING OF THE ADJACENT LANE IN THE SAME DAY.
- DURING CONSTRUCTION, THE CONTRACTOR WILL BE PERMITTED TO LIMIT ON-STREET PARKING IN ORDER TO COMPLETE CONSTRUCTION OPERATIONS. THE CONTRACTOR WILL BE REQUIRED TO COORDINATE WITH THE MUNICIPALITY A MINIMUM OF 48 HOURS IN ADVANCE. IT WILL BE THE RESPONSIBILITY OF THE CONTRACTOR TO PLACE ADVANCE SIGNS TO ALERT RESIDENTS AND COMMUTERS OF THE PARKING RESTRICTIONS. THE PLACEMENT OF THESE SIGNS SHALL TAKE PLACE 48 HOURS IN ADVANCE IN ORDER TO ALLOW SUFFICIENT TIME FOR RESIDENTS AND GENERAL PUBLIC TO REVISE THEIR PARKING PATTERNS.
- CONTRACTOR SHALL TAKE PRECAUTION BY PRESERVING EXISTING TREES WITHIN THE RIGHT OF WAY. IF ANY DAMAGE OCCURS, TREES SHALL BE REPLACED IN KIND PER ARTICLE 201.07 REPAIR OR REPLACEMENT OF EXISTING PLANT MATERIAL REQUIREMENTS STATED HEREIN.
- ALL NITROGEN, PHOSPHOROUS AND POTASSIUM FERTILIZER NUTRIENTS HAVE BEEN INTENTIONALLY OMITTED FROM THE CONTRACT ON THE SODDING APPLICATION.
- THE CONTRACTOR SHALL CONTACT KALPANA KANNAN-HOSADURGA, THE DISTRICT ONE TRAFFIC CONTROL SUPERVISOR, AT KALPANA.KANNAN-HOSADURGA@ILLINOIS.GOV A MINIMUM OF 72 HOURS IN ADVANCE OF BEGINNING WORK.
- DRAINAGE ADJUSTMENT OR RECONSTRUCTION LOCATIONS WILL BE DETERMINED IN THE FIELD BY THE ENGINEER.

COMMITMENTS

NONE

	USER NAME = jtmiller	DESIGNED - CG	REVISED -
		DRAWN - KAR	REVISED -
	PLOT SCALE = 20.0000' / in.	CHECKED - JDM	REVISED -
	PLOT DATE = 6/5/2024	DATE - 2-21-2024	FILE - 220047_SHT-GenNotes.dgn

STATE OF ILLINOIS
 DEPARTMENT OF TRANSPORTATION

INDEX OF SHEETS, HIGHWAY STANDARDS AND GENERAL NOTES			
SCALE:	NONE	SHEET 1 OF 1 SHEETS	STA. TO STA.

F.A.U. RTE.	SECTION	COUNTY	TOTAL SHEETS	SHEET NO.
2749	22-00245-00-RS	LAKE	16	2
CONTRACT NO. 61K51			ILLINOIS	

SUMMARY OF QUANTITIES

CODE NO.	ITEM	UNIT	CONSTRUCTION CODE
			NORTH AVE
			100% FED
			ROADWAY
0005			
URBAN			
20200100	EARTH EXCAVATION	CU YD	212
20201200	REMOVAL AND DISPOSAL OF UNSUITABLE MATERIAL	CU YD	417
21001000	GEOTECHNICAL FABRIC FOR GROUND STABILIZATION	SQ YD	438
21101615	TOPSOIL FURNISH AND PLACE, 4"	SQ YD	1,040
25200110	SODDING, SALT TOLERANT	SQ YD	1,040
25200200	SUPPLEMENTAL WATERING	UNIT	29
28000510	INLET FILTERS	EACH	40
30300001	AGGREGATE SUBGRADE IMPROVEMENT	CU YD	301
35101600	AGGREGATE BASE COURSE, TYPE B 4"	SQ YD	1,685
35102000	AGGREGATE BASE COURSE, TYPE B 8"	SQ YD	110
40600290	BITUMINOUS MATERIALS (TACK COAT)	POUND	12,160
40600370	LONGITUDINAL JOINT SEALANT	FOOT	8,780
40600400	MIXTURE FOR CRACKS, JOINTS, AND FLANGEWAYS	TON	24
40600982	HOT-MIX ASPHALT SURFACE REMOVAL - BUTT JOINT	SQ YD	57
40603200	POLYMERIZED HOT-MIX ASPHALT BINDER COURSE, IL-4.75, N50	TON	743

* INDICATES SPECIALTY ITEM

CODE NO.	ITEM	UNIT	CONSTRUCTION CODE
			NORTH AVE
			100% FED
			ROADWAY
0005			
URBAN			
40604060	HOT-MIX ASPHALT SURFACE COURSE, IL-9.5, MIX "D", N50	TON	1,765
42300200	PORTLAND CEMENT CONCRETE DRIVEWAY PAVEMENT, 6 INCH	SQ YD	100
42300400	PORTLAND CEMENT CONCRETE DRIVEWAY PAVEMENT, 8 INCH	SQ YD	40
42400200	PORTLAND CEMENT CONCRETE SIDEWALK 5 INCH	SQ FT	8,234
42400800	DETECTABLE WARNINGS	SQ FT	560
44000158	HOT-MIX ASPHALT SURFACE REMOVAL, 2 1/4"	SQ YD	18,010
44000200	DRIVEWAY PAVEMENT REMOVAL	SQ YD	210
44000500	COMBINATION CURB AND GUTTER REMOVAL	FOOT	2,195
44000600	SIDEWALK REMOVAL	SQ FT	8,234
44201741	CLASS D PATCHES, TYPE II, 8 INCH	SQ YD	343
44201745	CLASS D PATCHES, TYPE III, 8 INCH	SQ YD	487
44201747	CLASS D PATCHES, TYPE IV, 8 INCH	SQ YD	919
60603800	COMBINATION CONCRETE CURB AND GUTTER, TYPE B-6.12	FOOT	2,195
* 66900200	NON-SPECIAL WASTE DISPOSAL	CU YD	20
* 66900530	SOIL DISPOSAL ANALYSIS	EACH	4

* INDICATES SPECIALTY ITEM

STATE OF ILLINOIS - PROFESSIONAL DESIGN FIRM
 LICENSE NO. - 184-001121 - EXPIRES 4/30/2025
 jtmiller - 5/20/2024 11:54:36 AM
 FILE NAME: P:\WAUKG\220047-2022 STP Projects\CAD\Sheets Phase II S Sheridan North\220047_SHT-SOQ.dgn



USER NAME = jtmiller	DESIGNED - CG	REVISED -
PLOT SCALE = 20.0000' / in.	DRAWN - KAR	REVISED -
PLOT DATE = 5/20/2024	CHECKED - JDM	REVISED -
	DATE - 2-21-2024	FILE - 220047_SHT-SOQ.dgn

STATE OF ILLINOIS
DEPARTMENT OF TRANSPORTATION

SUMMARY OF QUANTITIES

SCALE: NONE SHEET 1 OF 2 SHEETS STA. TO STA.

F.A.U. RTE.	SECTION	COUNTY	TOTAL SHEETS	SHEET NO.
2749	22-00245-00-R5	LAKE	16	3
CONTRACT NO. 61K51			ILLINOIS	

SUMMARY OF QUANTITIES

CODE NO.	ITEM	UNIT	CONSTRUCTION CODE
			NORTH AVE
			100% FED
			ROADWAY
0005			
URBAN			
* 66901001	REGULATED SUBSTANCES PRE-CONSTRUCTION PLAN	L SUM	1
* 66901003	REGULATED SUBSTANCES FINAL CONSTRUCTION REPORT	L SUM	1
* 66901006	REGULATED SUBSTANCES MONITORING	CAL DA	15
67100100	MOBILIZATION	L SUM	1
70102620	TRAFFIC CONTROL AND PROTECTION, STANDARD 701501	L SUM	1
70102640	TRAFFIC CONTROL AND PROTECTION, STANDARD 701801	L SUM	1
70300100	SHORT TERM PAVEMENT MARKING	FOOT	9,790
70300150	SHORT TERM PAVEMENT MARKING REMOVAL	SQ FT	3,480
* 78000200	THERMOPLASTIC PAVEMENT MARKING - LINE 4"	FOOT	2,076
* 78000400	THERMOPLASTIC PAVEMENT MARKING - LINE 6"	FOOT	550
* 78000600	THERMOPLASTIC PAVEMENT MARKING - LINE 12"	FOOT	232
* 78000650	THERMOPLASTIC PAVEMENT MARKING - LINE 24"	FOOT	115
Z0004510	HOT-MIX ASPHALT DRIVEWAY PAVEMENT, 3"	SQ YD	280
Z0004522	HOT-MIX ASPHALT DRIVEWAY PAVEMENT, 6"	SQ YD	70
Z0017400	DRAINAGE & UTILITY STRUCTURES TO BE ADJUSTED	EACH	40

* INDICATES SPECIALTY ITEM

CODE NO.	ITEM	UNIT	CONSTRUCTION CODE
			NORTH AVE
			100% FED
			ROADWAY
0005			
URBAN			
Z0017700	DRAINAGE & UTILITY STRUCTURES TO BE RECONSTRUCTED	EACH	5
Z0030850	TEMPORARY INFORMATION SIGNING	SQ FT	52
X4021000	TEMPORARY ACCESS (PRIVATE ENTRANCE)	EACH	18
X4022000	TEMPORARY ACCESS (COMMERCIAL ENTRANCE)	EACH	5
X6026050	SANITARY MANHOLES TO BE ADJUSTED	EACH	2
X6030310	FRAMES AND LIDS TO BE ADJUSTED (SPECIAL)	EACH	20

* INDICATES SPECIALTY ITEM

STATE OF ILLINOIS - PROFESSIONAL DESIGN FIRM
 LICENSE NO. - 184-001121 - EXPIRES 4/30/2025
 jtmiller
 FILE NAME: P:\WAUKC220047-2022 STP - Projects\CAD\Sheets_Phase II S Sheridan North\220047_SHT-SOQ.dgn



USER NAME = jtmiller	DESIGNED - CG	REVISED -
PLOT SCALE = 20.0000 ' / in.	DRAWN - KAR	REVISED -
PLOT DATE = 5/20/2024	CHECKED - JDM	REVISED -
	DATE - 2-21-2024	FILE - 220047_SHT-SOQ.dgn

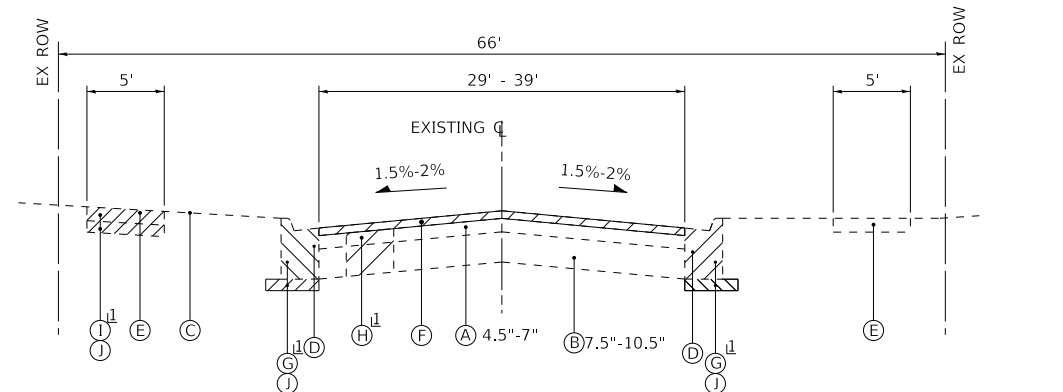
STATE OF ILLINOIS
DEPARTMENT OF TRANSPORTATION

SUMMARY OF QUANTITIES

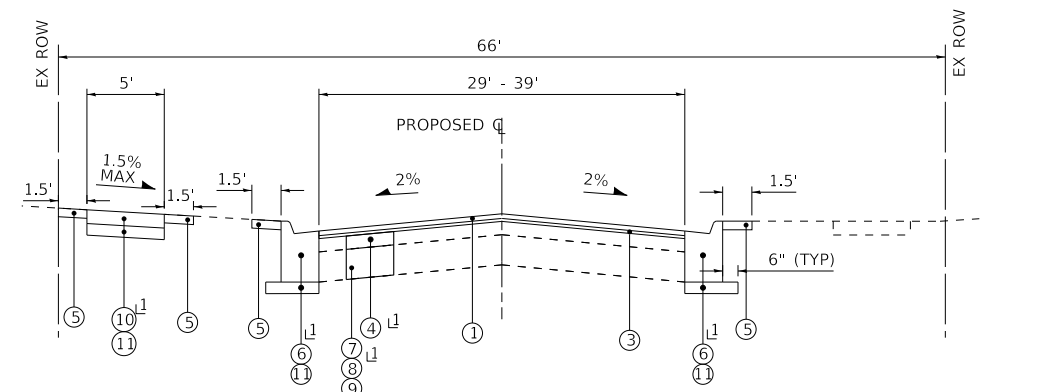
SCALE: NONE SHEET 2 OF 2 SHEETS STA. TO STA.

F.A.U. RTE.	SECTION	COUNTY	TOTAL SHEETS	SHEET NO.
2749	22-00245-00-R5	LAKE	16	4
CONTRACT NO. 61K51			ILLINOIS	

STATE OF ILLINOIS - PROFESSIONAL DESIGN FIRM
 LICENSE NO. - 184-001121 - EXPIRES 4/30/2025
 jtmiller 5/20/2024 11:54:42 AM
 FILE NAME: P:\WAUKC220047-2022_STP_Projects\CAD\Sheets_Phase II - Sheridan North\220047_SHT-TypSec.dgn



EXISTING TYPICAL SECTION
 NORTH AVE
 J LOCATIONS DETERMINED BY ENGINEER



PROPOSED TYPICAL SECTION
 NORTH AVE
 J LOCATIONS DETERMINED BY ENGINEER

LONGITUDINAL JOINT SEALANT SHALL BE PLACED OVER THE POLYMERIZED HOT-MIX ASPHALT BINDER COURSE, IL-4.75, N50.

NOTE:
 GEOTECHNICAL FABRIC FOR GROUND STABILIZATION AND/OR AGGREGATE SUBGRADE IMPROVEMENT (CU YD) HAVE BEEN PROVIDED FOR USE AT THE LOCATIONS INDICATED FOR SOILS THAT TEND TO BE UNSTABLE AND/OR UNSUITABLE. THE ACTUAL NEED FOR REMOVAL AND REPLACEMENT WITH ABOVE ITEM WILL BE DETERMINED IN THE FIELD AT THE TIME OF CONSTRUCTION BY THE GEOTECHNICAL ENGINEER. ALL POTENTIALLY UNSTABLE SOILS SHOULD BE TESTED WITH A STATIC OR DYNAMIC CONE PENETROMETER AND TREATED IN ACCORDANCE WITH ARTICLE 301.04 OF THE STANDARD SPECIFICATIONS AND IDOT SUBGRADE STABILITY MANUAL. IF UNSTABLE AND/OR UNSUITABLE SOILS ARE NOT ENCOUNTERED, THEN THE QUANTITY SHALL BE DEDUCTED AND NO ADDITIONAL COMPENSATION WILL BE DUE TO THE CONTRACTOR.

ANY AGGREGATE SUBGRADE IMPROVEMENT CONTAMINATED AND/OR DAMAGED BY THE CONTRACTOR'S VEHICLES AND/OR EQUIPMENT IS TO BE REMOVED AND REPLACED AS DIRECTED BY THE ENGINEER AT CONTRACTOR EXPENSE.

FINISHED HMA 1/4" HIGHER THAN GUTTER FLAG.

CONTRACTOR SHALL MILL BEFORE PATCHING.

EXISTING LEGEND

- (A) EXISTING HMA BINDER & SURFACE COURSE
- (B) EXISTING AGGREGATE BASE COURSE
- (C) GROUND SURFACE
- (D) EXISTING COMBINATION CURB AND GUTTER
- (E) EXISTING SIDEWALK
- (F) HOT-MIX ASPHALT SURFACE REMOVAL - 2 1/4"
- (G) REMOVE EXISTING COMBINATION CURB & GUTTER
- (H) REMOVAL FOR CLASS D PATCH
- (I) SIDEWALK REMOVAL
- (J) EARTH EXCAVATION
- ☒ REMOVAL ITEM

PROPOSED LEGEND

- (1) HOT-MIX ASPHALT SURFACE COURSE, IL-9.5, MIX "D", N50 - 1 3/4"
- (2) NOT USED
- (3) POLYMERIZED HOT-MIX ASPHALT BINDER COURSE, IL-4.75, N50 - 3/4"
- (4) CLASS D PATCHES 8"
- (5) SODDING, SALT TOLERANT TOPSOIL FURNISH AND PLACE, 4"
- (6) COMBINATION CONCRETE CURB AND GUTTER, TYPE B-6.12
- (7) AGGREGATE SUBGRADE IMPROVEMENT
- (8) REMOVAL AND DISPOSAL OF UNSUITABLE MATERIALS
- (9) GEOTECHNICAL FABRIC FOR GROUND STABILIZATION
- (10) PORTLAND CEMENT CONCRETE SIDEWALK 5 INCH
- (11) AGGREGATE BASE COURSE, TYPE B 4"

HOT-MIX ASPHALT MIXTURE REQUIREMENTS

MIXTURE TYPE	AIR VOIDS @ Ndes	QMP
PAVEMENT RESURFACING		
HOT-MIX ASPHALT SURFACE COURSE, IL-9.5, MIX "D", N50; 1 3/4"	4% @ 50 Gyr.	LR1030-2
POLYMERIZED HOT-MIX ASPHALT BINDER COURSE, IL-4.75, N50; 3/4"	3.5% @ 50 Gyr.	LR1030-2
HOT-MIX ASPHALT DRIVEWAY PAVEMENT, 3"		
HOT-MIX ASPHALT SURFACE COURSE, IL-9.5, MIX "D", N50; 3" (IN 2 LIFTS)	4% @ 50 Gyr.	LR1030-2
HOT-MIX ASPHALT DRIVEWAY PAVEMENT, 6"		
HOT-MIX ASPHALT SURFACE COURSE, IL-9.5, MIX "D", N50; 2"	4% @ 50 Gyr.	LR1030-2
HOT-MIX ASPHALT BINDER COURSE, IL-19.0, N50; 4"	4% @ 50 Gyr.	LR1030-2
PATCHING		
CLASS D PATCHES (HMA BINDER IL-19.0mm); 8"	4% @ 70 Gyr.	LR1030-2
QMP designation: Quality Control/Quality Assurance (QC/QA) PER LR1030-2		

NOTES:
 1. THE UNIT WEIGHT USED TO CALCULATE ALL HMA SURFACE MIXTURE QUANTITIES IS 112 LBS/SQ YD/IN.
 2. THE "AC TYPE" FOR POLYMERIZED HMA MIXES SHALL BE "SBS/SBR PG 76 -22" AND FOR NON-POLYMERIZED HMA THE "AC TYPE" SHALL BE "PG 64 -22" UNLESS MODIFIED BY RECLAIMED MATERIALS SPECIFICATIONS.



USER NAME = jtmiller	DESIGNED - CG	REVISED -
DRAWN - KAR	CHECKED - JDM	REVISED -
PLOT SCALE = 20.0000' / in.	DATE - 2-21-2024	FILE - 220047_SHT-TypSec.dgn
PLOT DATE = 5/20/2024		

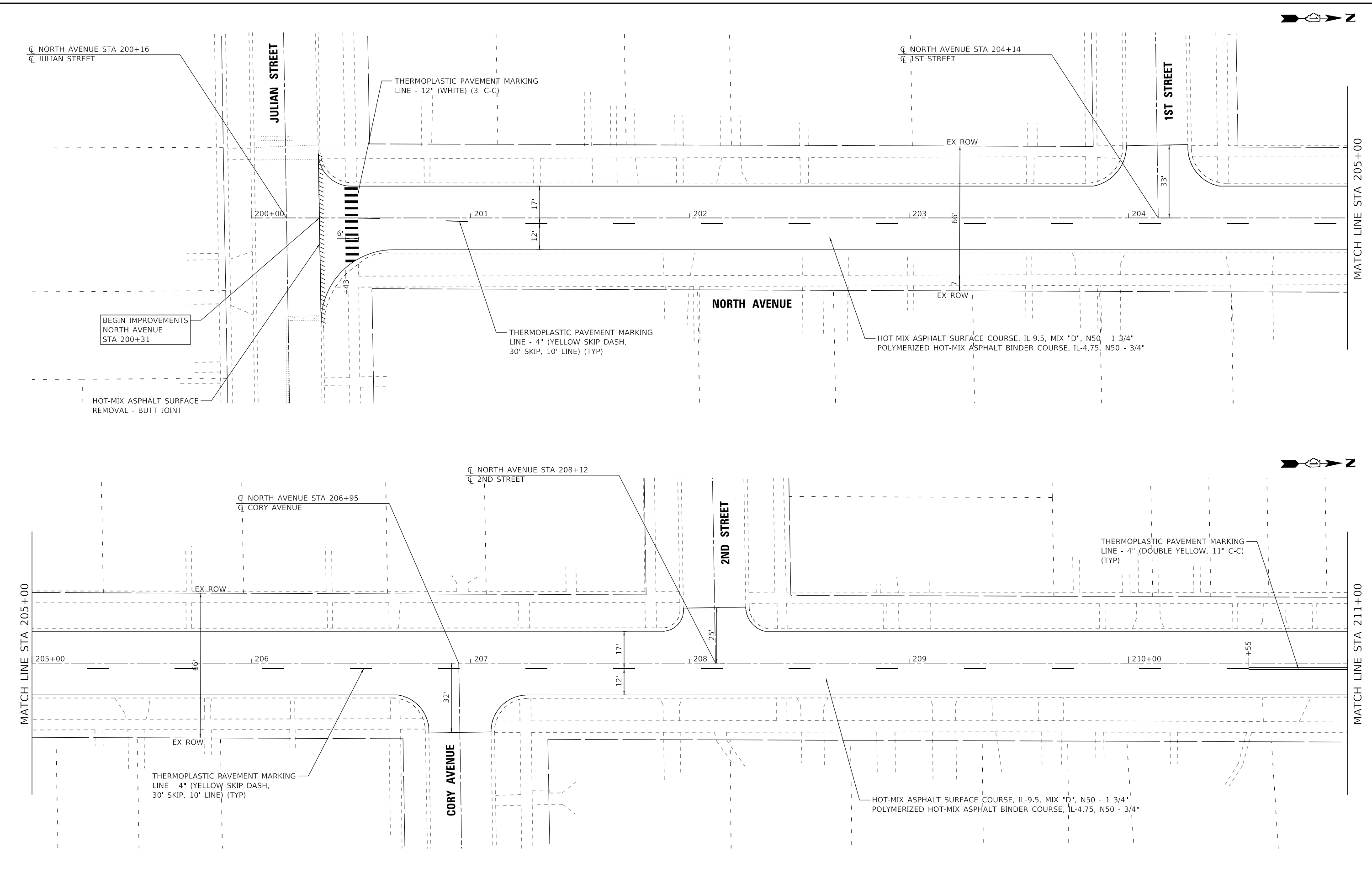
STATE OF ILLINOIS
 DEPARTMENT OF TRANSPORTATION

TYPICAL SECTIONS AND HOT-MIX ASPHALT REQUIREMENTS

SCALE: NONE SHEET 1 OF 1 SHEETS STA. TO STA.

F.A.U. RTE.	SECTION	COUNTY	TOTAL SHEETS	SHEET NO.
2749	22-00245-00-R5	LAKE	16	5
ILLINOIS			CONTRACT NO. 61K51	

STATE OF ILLINOIS - PROFESSIONAL DESIGN FIRM
 LICENSE NO. - 184-001121 - EXPIRES 4/30/2025
 jtmiller - 5/20/2024 11:54:54 AM
 FILE NAME: P:\WAUKC\220047-2022_STP_Project\CAD\Sheets_Phase II - S Sheridan North\220047_SHT-Plan4_North.dgn



BAXTER & WOODMAN Consulting Engineers	USER NAME = jtmiller	DESIGNED - CG	REVISED -
		DRAWN - KAR	REVISED -
	PLOT SCALE = 20.0000' / in.	CHECKED - JDM	REVISED -
	PLOT DATE = 5/20/2024	DATE - 2-21-2024	FILE - 220047_SHT-Plan4_North.dgn

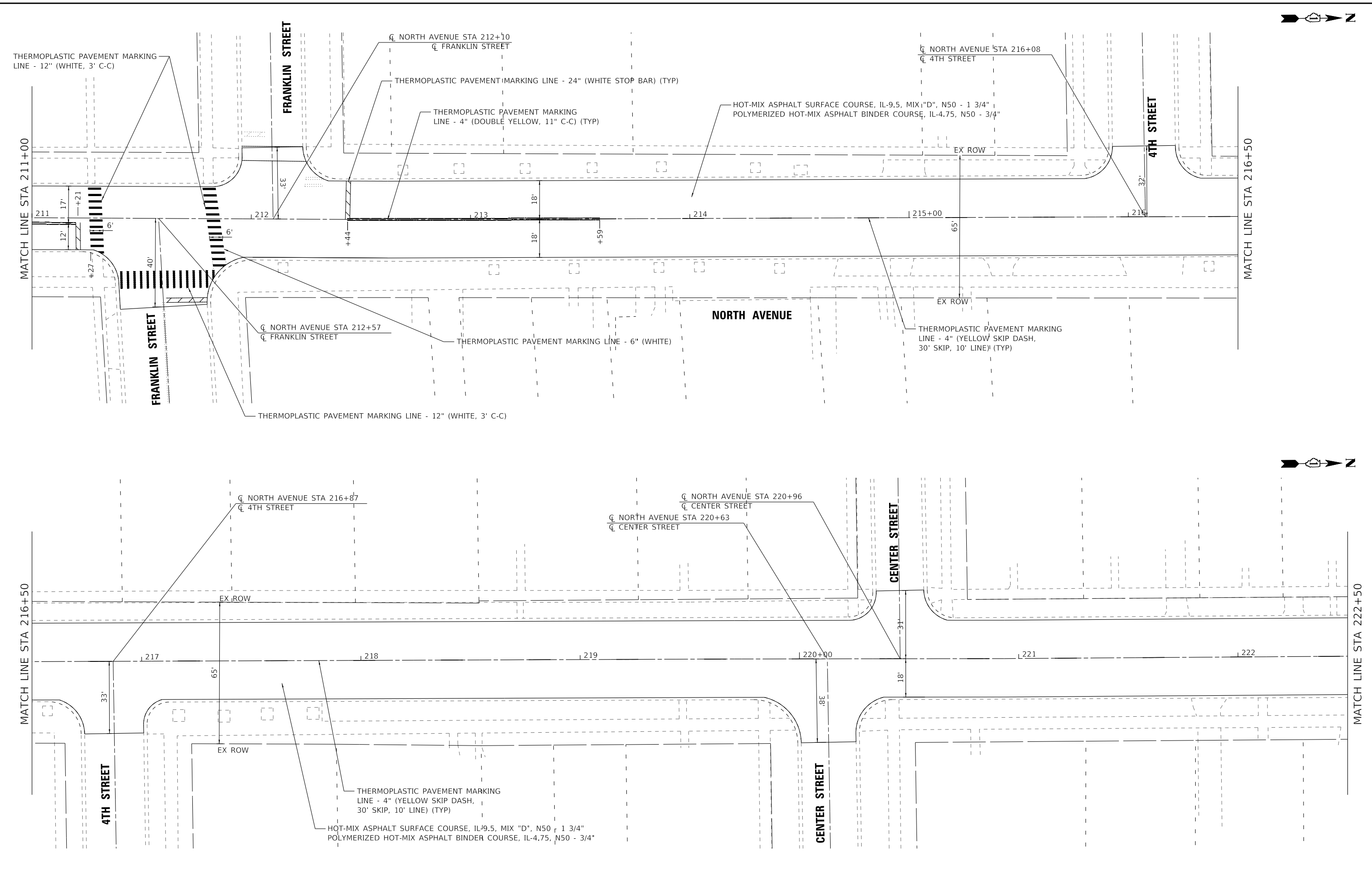
**STATE OF ILLINOIS
 DEPARTMENT OF TRANSPORTATION**

**ROADWAY PLAN
 NORTH AVENUE**

SCALE: 1" = 20' SHEET 1 OF 4 SHEETS STA. 200+00 TO STA. 211+00

F.A.U. RTE.	SECTION	COUNTY	TOTAL SHEETS	SHEET NO.
2749	22-00245-00-RS	LAKE	16	6
ILLINOIS			CONTRACT NO. 61K51	

STATE OF ILLINOIS - PROFESSIONAL DESIGN FIRM
 LICENSE NO. - 184-001121 - EXPIRES 4/30/2025
 jtmiller - 5/20/2024 11:54:56 AM
 FILE NAME: P:\WAUKC220047-2022_STP_Project\CAD\Sheets_Phase II - S Sheridan North\220047_SHT-Plan5_North.dgn



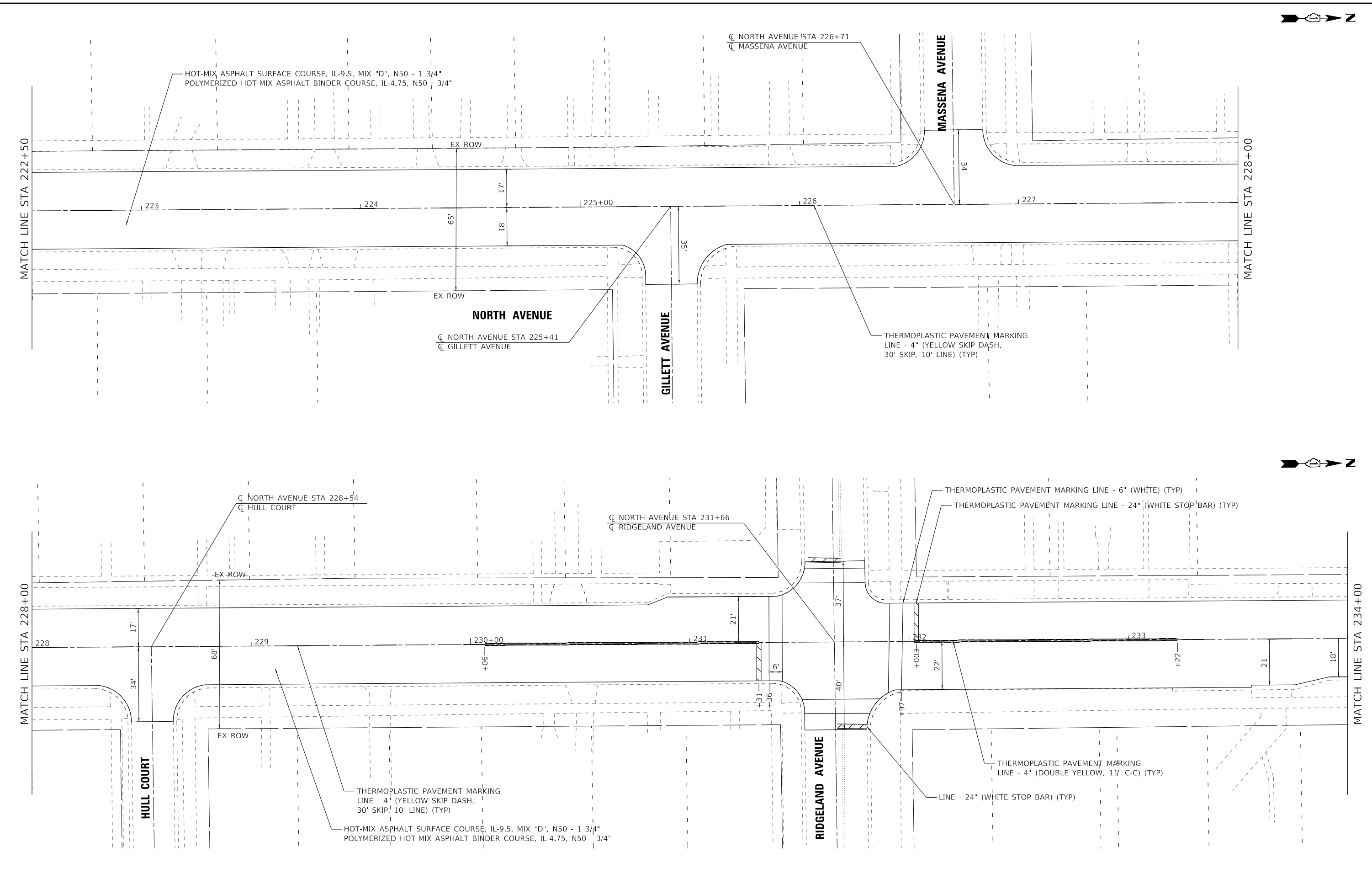
	USER NAME = jtmiller	DESIGNED - CG	REVISED -
	PLOT SCALE = 20.0000' / in.	DRAWN - KAR	REVISED -
	PLOT DATE = 5/20/2024	CHECKED - JDM	REVISED -
		DATE - 2-21-2024	FILE - 220047_SHT-Plan5_North.dgn

STATE OF ILLINOIS
 DEPARTMENT OF TRANSPORTATION

ROADWAY PLAN	
NORTH AVENUE	
SCALE: 1" = 20'	SHEET 2 OF 4 SHEETS
STA. 211+00	TO STA. 222+50

F.A.U. RTE.	SECTION	COUNTY	TOTAL SHEETS	SHEET NO.
2749	22-00245-00-RS	LAKE	16	7
CONTRACT NO. 61K51			ILLINOIS	

STATE OF ILLINOIS - PROFESSIONAL DESIGN FIRM
 LICENSE NO. - 184-001121 - EXPIRES 4/30/2025
 jrmiller
 5/20/2024 11:54:58 AM
 FILE NAME: P:\WAUKC220047-2022_STP_Project\CAD\Sheets_Phase II S Sheridan North\220047_SHT-Plan6 North.dgn



USER NAME = jrmiller	DESIGNED - CG	REVISED -
DRAWN - KAR	REVISED -	
PLOT SCALE = 20.0000' / in.	CHECKED - JDM	REVISED -
PLOT DATE = 5/20/2024	DATE - 2-21-2024	FILE - 220047_SHT-Plan6 North.dgn

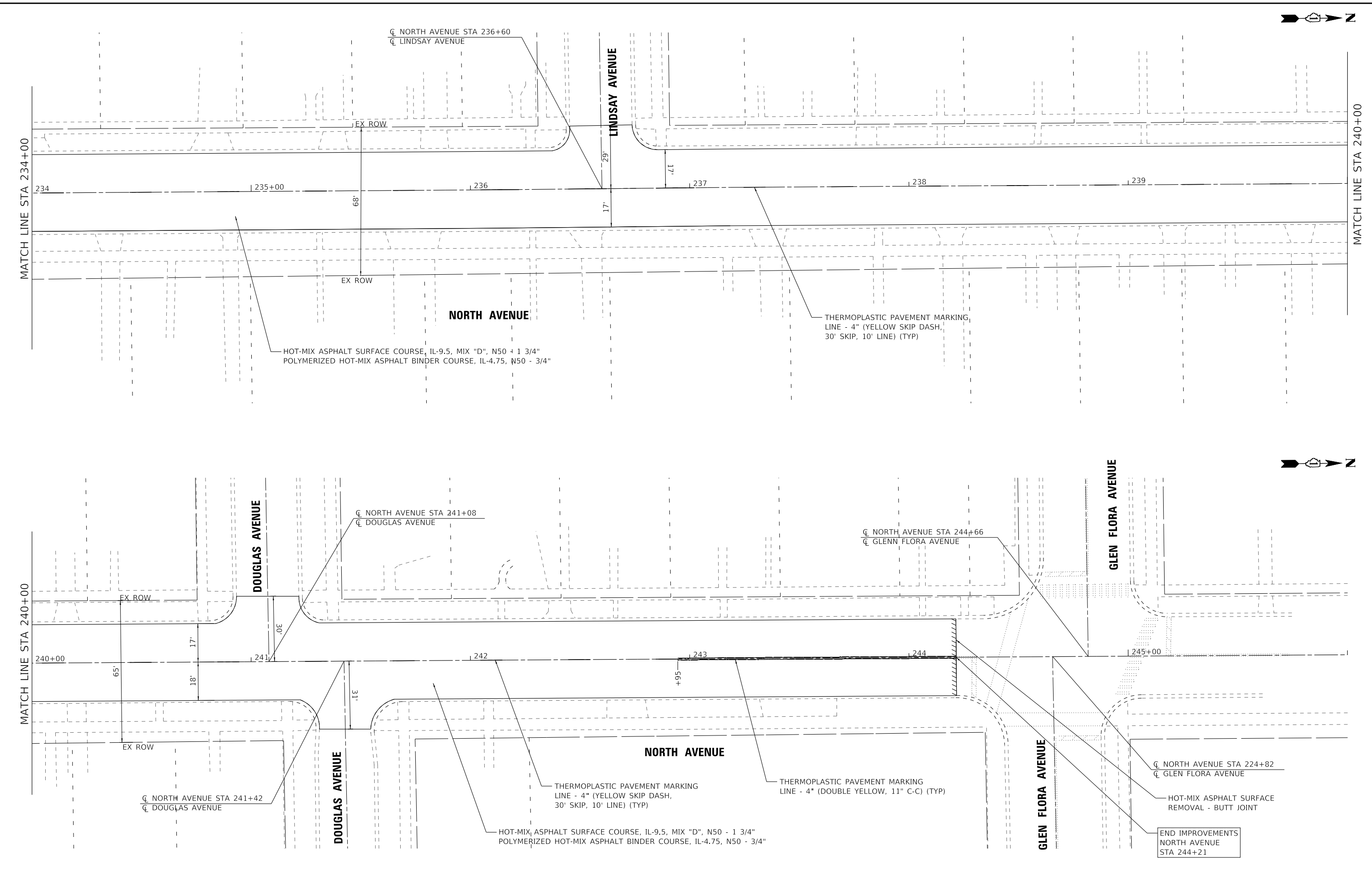
**STATE OF ILLINOIS
 DEPARTMENT OF TRANSPORTATION**

**ROADWAY PLAN
 NORTH AVENUE**

SCALE: 1" = 20' SHEET 3 OF 4 SHEETS STA. 222+50 TO STA. 234+00

F.A.U. RTE.	SECTION	COUNTY	TOTAL SHEETS	SHEET NO.
2749	22-00245-00-RS	LAKE	16	8
CONTRACT NO. 61K51			ILLINOIS	

STATE OF ILLINOIS - PROFESSIONAL DESIGN FIRM
 LICENSE NO. - 184-001121 - EXPIRES 4/30/2025
 jrmiller 5/20/2024 11:55:00 AM
 ...\\oldrvp\pdf\BW_Default.plt
 ...220047_SHT-Plan7 North.dgn
 P:\WAUKK\220047-2022 STP-Projects\CAD\Sheets_Phase II S Sheridan North\220047_SHT-Plan7 North.dgn
 FILE NAME: P:\WAUKK\220047-2022 STP-Projects\CAD\Sheets_Phase II S Sheridan North\220047_SHT-Plan7 North.dgn

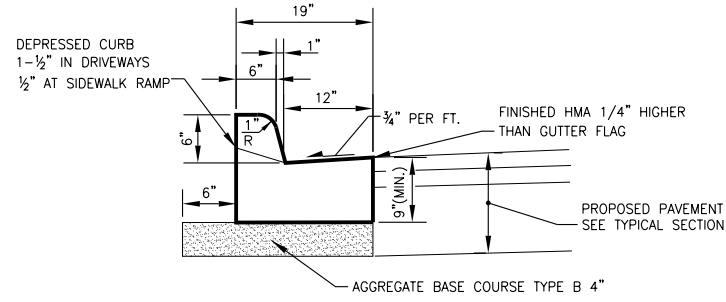


BAXTER & WOODMAN Consulting Engineers	USER NAME = jrmiller	DESIGNED - CG	REVISED -
		DRAWN - KAR	REVISED -
	PLOT SCALE = 20.0000' / in.	CHECKED - JDM	REVISED -
	PLOT DATE = 5/20/2024	DATE - 2-21-2024	FILE - 220047_SHT-Plan7 North.dgn

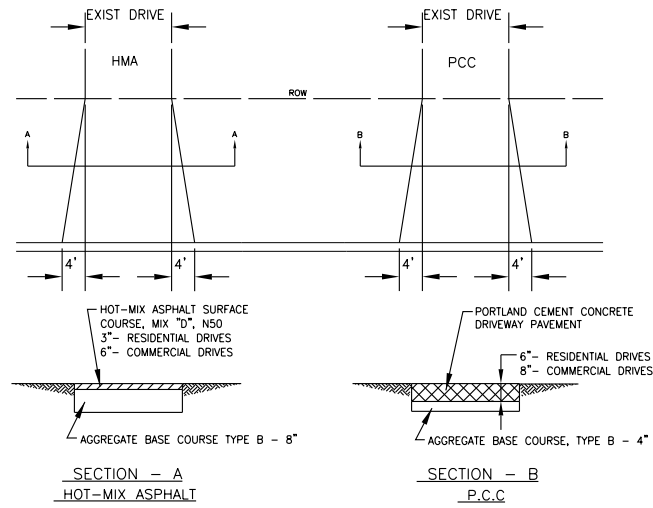
STATE OF ILLINOIS
 DEPARTMENT OF TRANSPORTATION

ROADWAY PLAN		F.A.U. RTE.	SECTION	COUNTY	TOTAL SHEETS	SHEET NO.
NORTH AVENUE		2749	22-00245-00-R5	LAKE	16	9
SCALE: 1" = 20'		SHEET 4 OF 4 SHEETS		STA. 234+00 TO STA. 246+00		CONTRACT NO. 61K51

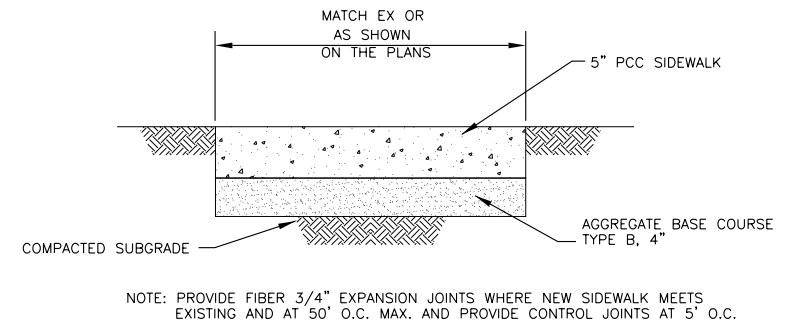
ILLINOIS	
----------	--



COMBINATION CONCRETE
CURB & GUTTER TYPE
B-6.12
NO SCALE



DRIVEWAY PAVEMENT DETAIL
NO SCALE



PORTLAND CEMENT CONCRETE (P.C.C.) SIDEWALK, 5-INCH
NO SCALE

STATE OF ILLINOIS - PROFESSIONAL DESIGN FIRM
LICENSE NO. - 184-001121 - EXPIRES 4/30/2025
jtmiller - Default
5/20/2024 11:55:03 AM
FILE NAME: P:\WAKK\220047-2022_STP_Project\CAD\Sheets_Phase II S Sheridan North\220047_SHT-MiscDetails.dgn



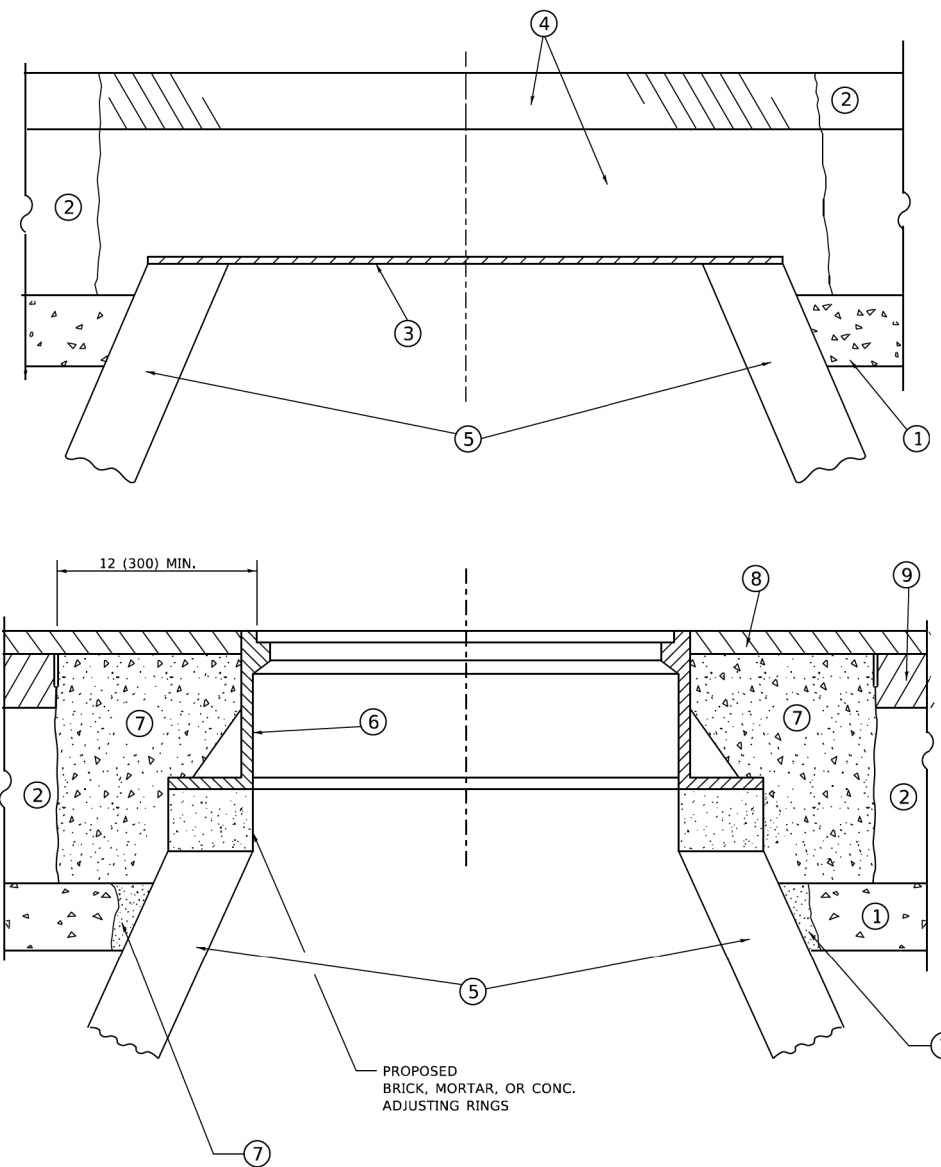
USER NAME = jtmiller	DESIGNED - CG	REVISED -
PLOT SCALE = 20.0000 ' / in.	DRAWN - KAR	REVISED -
PLOT DATE = 5/20/2024	CHECKED - JDM	REVISED -
	DATE - 2-21-2024	FILE - 220047_SHT-MiscDetails.dgn

STATE OF ILLINOIS
DEPARTMENT OF TRANSPORTATION

MISCELLANEOUS DETAILS

SCALE: NONE SHEET 1 OF 1 SHEETS STA. TO STA.

F.A.U. RTE.	SECTION	COUNTY	TOTAL SHEETS	SHEET NO.
2749	22-00245-00-RS	LAKE	16	10
ILLINOIS			CONTRACT NO. 61K51	



**DETAILS FOR FRAMES AND LIDS ADJUSTMENT
WITH MILLING**

NOTES

1. EXISTING BROKEN FRAMES AND LIDS SHALL BE REMOVED AND DISPOSED OF BY THE CONTRACTOR AND SHALL BE REPLACED AS DIRECTED BY THE ENGINEER. REPLACEMENT FRAMES AND LIDS WILL BE PAID FOR IN ACCORDANCE WITH ARTICLE 109.04 OF THE STANDARD SPECIFICATIONS UNLESS A SEPARATE PAY ITEM HAS BEEN PROVIDED.
2. IF THE EXISTING LIDS ARE OPEN, THE FRAME WILL BE ADJUSTED TO THE ELEVATION OF THE MILLED PAVEMENT SURFACE PRIOR TO THE MILLING OPERATION. THE FRAME WILL NOT BE REMOVED AND COVERED BY THE METAL PLATE.
3. CITY OF CHICAGO CASTINGS ARE THE PROPERTY OF THE CITY AND THE CONTRACTOR SHALL NOTIFY THE CITY FOR REMOVAL AND DISPOSITION OF THE CASTINGS.
4. THE METAL PLATE USED TO COVER THE STRUCTURE SHALL REMAIN THE PROPERTY OF THE CONTRACTOR.
5. THE CONTRACTOR SHALL REMOVE ALL TRAFFIC CONTROL DEVICES BY THE END OF EACH WORK SHIFT.

CONSTRUCTION PROCEDURES

STAGE 1 (BEFORE PAVEMENT MILLING)

- A) REMOVE A MINIMUM OF 12 (300) OF THE PAVEMENT FROM AROUND THE STRUCTURE.
- B) REMOVE THE EXISTING FRAME AND LID FROM THE STRUCTURE.
- C) COVER THE STRUCTURE OPENING WITH A 36 (900) DIAMETER METAL PLATE.
- D) BACKFILL WITH CRUSHED STONE AND HMA SURFACE MIX APPROVED BY THE ENGINEER. (MIN. 3 (80) HMA TO REMAIN AFTER MILLING).

STAGE 2 (AFTER PAVEMENT MILLING)

- A) REMOVE THE HMA SURFACE MIX AND CRUSHED STONE.
- B) INSTALL THE FRAME AND LID; ADJUST THE FRAME TO ITS FINAL SURFACE ELEVATION.
- C) THE SURROUNDING SPACE SHALL BE FILLED WITH CLASS PP-2* CONCRETE TO THE ELEVATION OF THE SURFACE OF THE EXISTING BASE COURSE OR THE BINDER COURSE.

* UNLESS OTHERWISE SPECIFIED IN THE PLANS.

THE PROCEDURE EXPLAINED ABOVE SHALL CONFORM TO THE APPLICABLE PORTIONS OF SECTIONS 353, 406, 602, AND 603 OF THE STANDARD SPECIFICATIONS EXCEPT THAT "THE CONTRACTOR SHALL ADJUST THE STRUCTURES TO THE FINISHED PAVEMENT ELEVATION NO MORE THAN 5 CALENDAR DAYS PRIOR TO PLACEMENT OF THE FINAL LIFT OF SURFACE UNLESS APPROVED BY THE ENGINEER."

LEGEND

- | | |
|--|-------------------------------|
| ① SUB-BASE GRANULAR MATERIAL | ⑥ FRAME AND LID (SEE NOTES) |
| ② EXISTING PAVEMENT | ⑦ CLASS PP-2* CONCRETE |
| ③ 36 (900) DIAMETER METAL PLATE | ⑧ PROPOSED HMA SURFACE COURSE |
| ④ PROPOSED CRUSHED STONE AND HMA SURFACE MIX | ⑨ PROPOSED HMA BINDER COURSE |
| ⑤ EXISTING STRUCTURE | |

LOCATION OF STRUCTURES

THE CONTRACTOR WILL BE REQUIRED TO KEEP A RECORD OF THE LOCATIONS OF THE BURIED STRUCTURES ACCORDING TO THE STATION AND DISTANCE LEFT OR RIGHT OF THE CENTERLINE OF PAVEMENT. UPON COMPLETION OF THE WORK, THE CONTRACTOR WILL DELIVER THE RECORD TO THE ENGINEER.

BASIS OF PAYMENT

1. REMOVING FRAMES AND LIDS ON DRAINAGE AND UTILITY STRUCTURES IN THE PAVEMENT PRIOR TO MILLING, AND ADJUSTING TO FINAL GRADE PRIOR TO PLACING THE SURFACE COURSE, WILL BE PAID FOR AT THE CONTRACT UNIT PRICE EACH FOR "FRAMES AND LIDS TO BE ADJUSTED (SPECIAL)."
2. THIS WORK WILL NOT BE PAID FOR WHEN DRAINAGE AND UTILITY STRUCTURES ARE SPECIFIED FOR PAYMENT AS STRUCTURE RECONSTRUCTION.
3. NEW FRAMES AND LIDS, WHEN SPECIFIED, WILL BE PAID FOR SEPARATELY.
4. WHEN STRUCTURES ARE TO BE ADJUSTED OR RECONSTRUCTED, THE LOWERING AND RAISING OF THE FRAMES AND LIDS WILL NOT BE PAID FOR SEPARATELY BUT WILL BE INCLUDED IN THE COST OF THE CORRESPONDING PAY ITEM.

ALL DIMENSIONS ARE IN INCHES (MILLIMETERS) UNLESS OTHERWISE SHOWN

MODEL: Default
FILE NAME: W:\ASSTC\0223\310b08.dgn

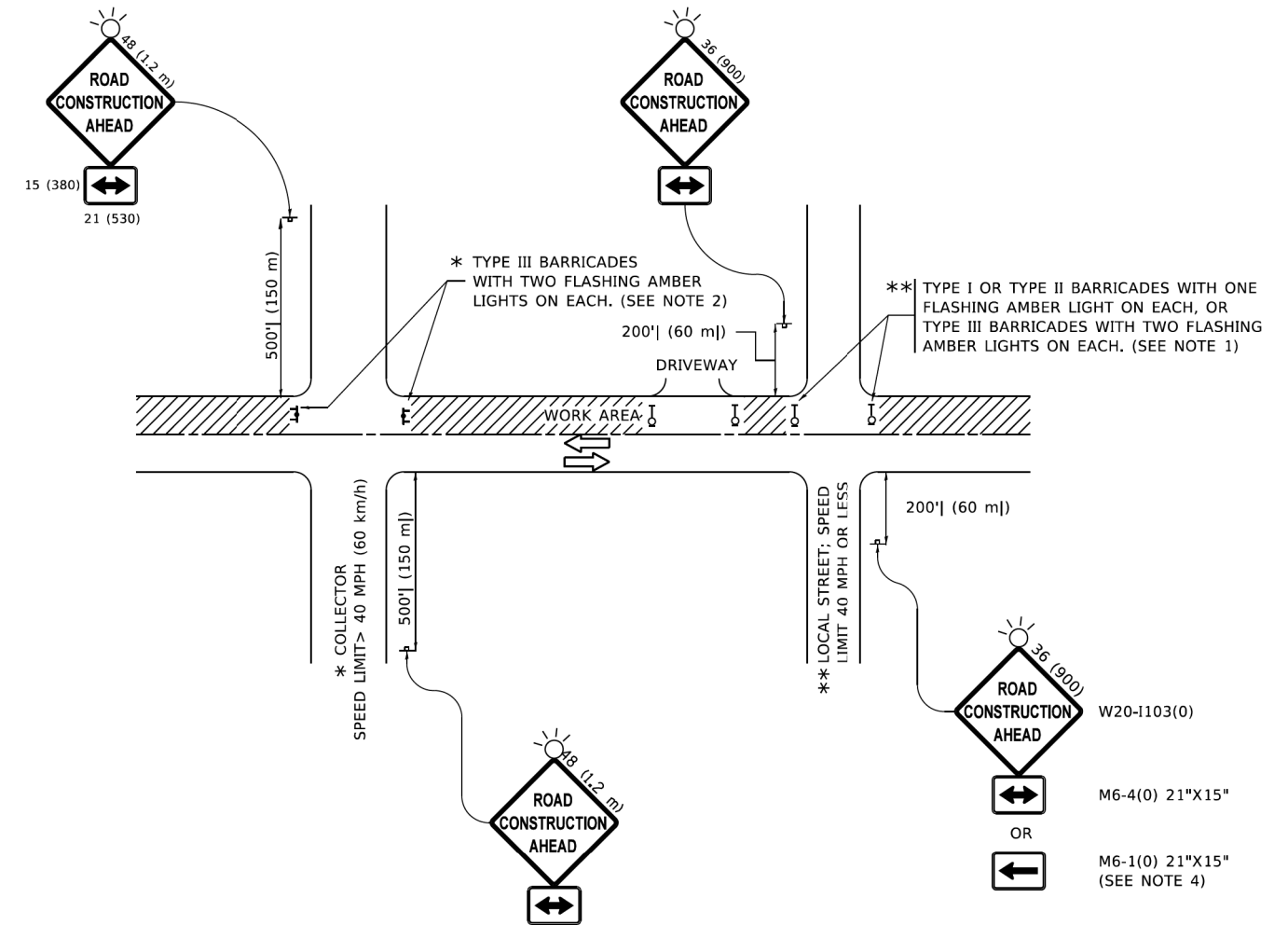
USER NAME = Lawrence,DeManche	DESIGNED - R. SHAH	REVISED - R. BORO 03-09-11
	DRAWN -	REVISED - R. BORO 12-06-11
PLOT SCALE = 100,0000' / in.	CHECKED -	REVISED - K. SMITH 11-18-22
PLOT DATE = 9/15/2023	DATE - 10-25-94	REVISED - K. SMITH 09-15-23

**STATE OF ILLINOIS
DEPARTMENT OF TRANSPORTATION**

**DETAILS FOR
FRAMES AND LIDS ADJUSTMENT WITH MILLING**

SCALE: NONE SHEET 1 OF 1 SHEETS STA. TO STA.

F.A. RTE.	SECTION	COUNTY	TOTAL SHEETS	SHEET NO.
2749	22-00245-00-R5	LAKE	16	11
BD600-03 (BD-08)			CONTRACT NO. 61K51	
ILLINOIS FED. AID PROJECT				



NOTES:

1. SIDE ROAD WITH A SPEED LIMIT OF 40 MPH (60 km/h) OR LESS AS SHOWN ON THE DRAWING AND AS DIRECTED BY THE ENGINEER:
 - a) ONE "ROAD CONSTRUCTION AHEAD" SIGN 36 x 36 (900x900) WITH A FLASHER MOUNTED ON IT APPROXIMATELY 200' (60 m) IN ADVANCE OF THE MAIN ROUTE.
 - b) THE CLOSED PORTION OF THE MAIN ROUTE SHALL BE PROTECTED BY BLOCKING WITH TYPE I, TYPE II OR TYPE III BARRICADES, 1/3 OF THE CROSS SECTION OF THE CLOSED PORTION.
2. SIDE ROAD WITH A SPEED LIMIT GREATER THAN 40 MPH (60 km/h) AS SHOWN ON THE DRAWING AND AS DIRECTED BY THE ENGINEER:
 - a) ONE "ROAD CONSTRUCTION AHEAD" SIGN 48 x 48 (1.2 m x 1.2 m) WITH A FLASHER MOUNTED ON IT APPROXIMATELY 500' (150 m) IN ADVANCE OF THE MAIN ROUTE.
 - b) BLOCKING WITH TYPE III BARRICADES, 1/2 OF THE CROSS SECTION OF THE CLOSED PORTION.
3. CONES MAY BE SUBSTITUTED FOR BARRICADES OR DRUMS AT HALF THE SPACING DURING DAY OPERATIONS. CONES SHALL BE A MINIMUM OF 28 (710) IN HEIGHT.
4. SIGNING AND THE WORK ZONE, A SINGLE HEADED ARROW (M6-1) SHALL BE USED IN LIEU OF THE DOUBLE HEADED ARROW (M6-4).
5. WHEN WORK IS BEING PERFORMED ON A SIDE ROAD OR DRIVEWAY, FOLLOW THE APPLICABLE STANDARD(S). THE DIRECTIONAL ARROW (M6-1 OR M6-4) SHALL BE COVERED OR REMOVED WHEN NO LONGER CONSISTENT WITH THE TRAFFIC CONTROL SET-UP.
6. ADVANCE WARNING SIGNS ARE TO BE OMITTED ON DRIVEWAYS UNLESS OTHERWISE SPECIFIED IN THE PLANS OR BY THE ENGINEER.
7. THE TRAFFIC CONTROL AND PROTECTION FOR SIDE ROADS, INTERSECTIONS, AND DRIVEWAYS SHALL BE INCLUDED IN THE COST OF SPECIFIED TRAFFIC CONTROL STANDARDS OR ITEMS.

All dimensions are in inches (millimeters) unless otherwise shown.

MODEL: Default
 FILE: \\pwwildcpw.bentley.com:PNWIDOT\Documents\DOT_Offices\Bentley_1\Projects\BIS\52723\311\CAD\Bentley\Sheet1c10.dgn

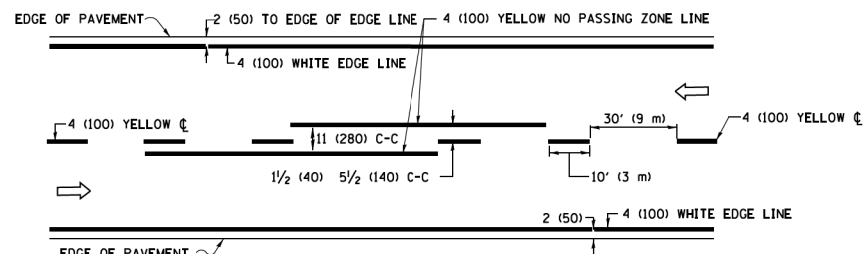
USER NAME = Lawrence,DeManche	DESIGNED - L.H.A.	REVISED - T. RAMMACHER 01-06-00
	DRAWN -	REVISED - A. SCHUETZE 07-01-13
PLOT SCALE = 100,0000' / in.	CHECKED -	REVISED - A. SCHUETZE 09-15-16
PLOT DATE = 5/3/2024	DATE - 06-89	REVISED - D. SENDERAK 05-03-24

**STATE OF ILLINOIS
DEPARTMENT OF TRANSPORTATION**

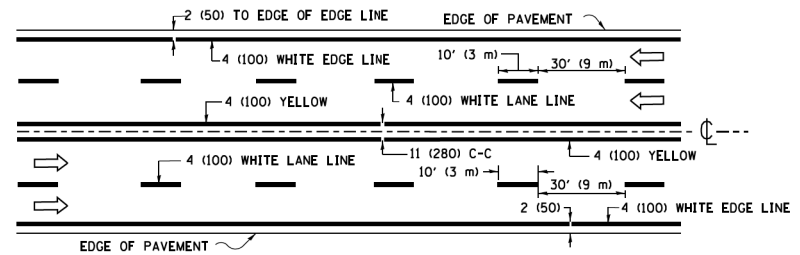
**TRAFFIC CONTROL AND PROTECTION FOR
SIDE ROADS, INTERSECTIONS, AND DRIVEWAYS**

SCALE: NONE SHEET 1 OF 1 SHEETS STA. TO STA.

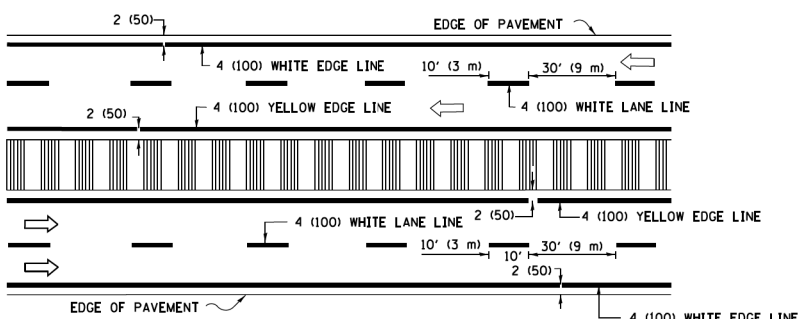
F.A. RTE.	SECTION	COUNTY	TOTAL SHEETS	SHEET NO.
2749	22-00245-00-RS	LAKE	16	14
TC-10			CONTRACT NO. 61K51	
ILLINOIS FED. AID PROJECT				



2-LANE ROADWAY

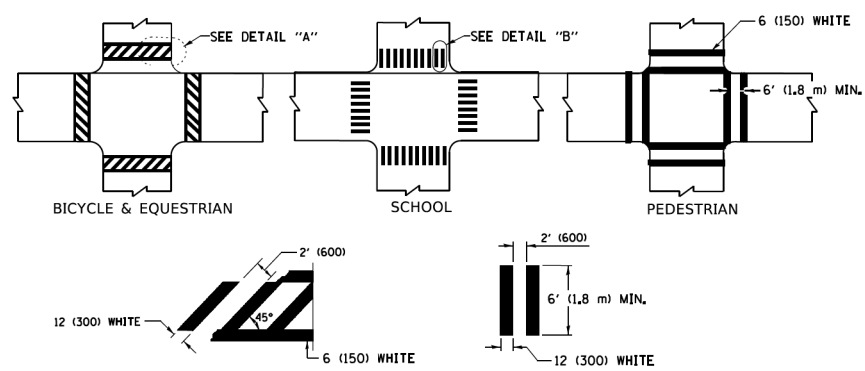


MULTI-LANE UNDIVIDED



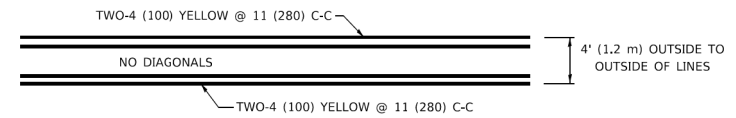
MULTI-LANE DIVIDED WITH MEDIAN

TYPICAL LANE AND EDGE LINE MARKING

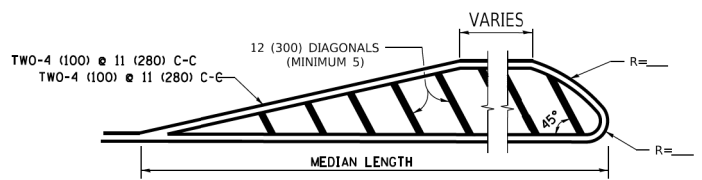


TYPICAL CROSSWALK MARKING

* MARKINGS SHALL BE INSTALLED PARALLEL TO THE CENTERLINE OF THE ROAD WHICH IT CROSSES

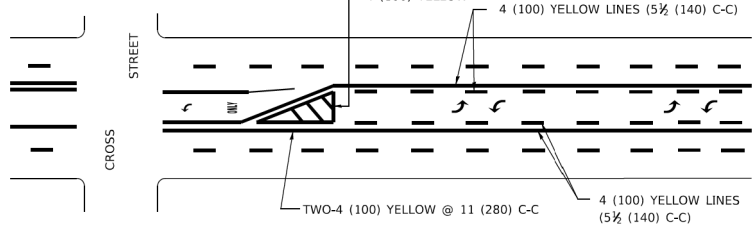


4' (1.2 m) WIDE MEDIANS ONLY



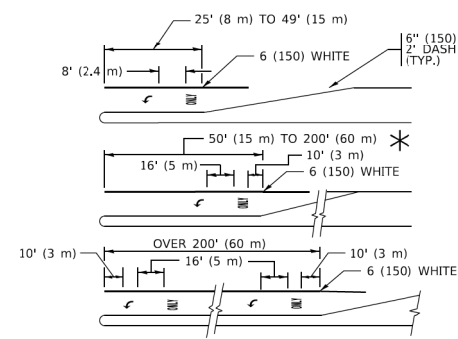
MEDIANS OVER 4' (1.2 m) WIDE

DIAGONAL LINE SPACING: 50' (15 m) C-C (LESS THAN 30MPH (50 km/h))
75' (25 m) C-C 30MPH (50 km/h) TO 45MPH (70 km/h)
150' (45 m) C-C (MORE THAN 45MPH (70 km/h))



**MEDIAN WITH TWO-WAY LEFT TURN LANE
TYPICAL PAINTED MEDIAN MARKING**

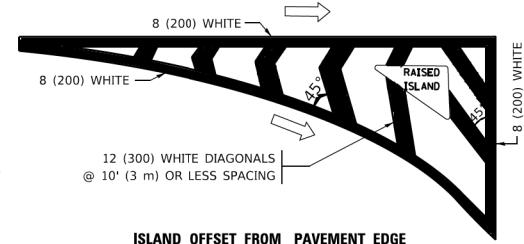
A MINIMUM OF TWO PAIRS OF TURN ARROWS SHALL BE USED, WHITE IN COLOR. ADDITIONAL PAIRS SHALL BE PLACED AT 200' (60 m) TO 300' (90 m) INTERVALS.



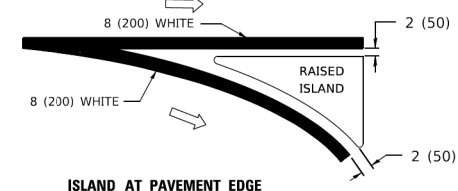
TYPICAL LEFT (OR RIGHT) TURN LANE

TYPICAL TURN LANE MARKING

FULL SIZE LETTERS 8' (2.4 m) AND ARROWS SHALL BE USED.
AREA = 15.6 SQ. FT. (1.5 m²) ONLY AREA = 20.8 SQ. FT. (1.9 m²)
* TURN LANES IN EXCESS OF 400' (120 m) IN LENGTH MAY HAVE AN ADDITIONAL SET OF ARROW - "ONLY" INSTALLED MIDWAY BETWEEN THE OTHER TWO SETS OF ARROW - "ONLY".

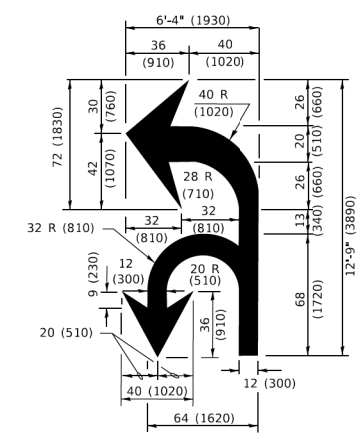


ISLAND OFFSET FROM PAVEMENT EDGE

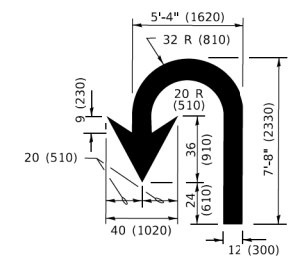


ISLAND AT PAVEMENT EDGE

TYPICAL ISLAND MARKING



COMBINATION LEFT AND U-TURN



U-TURN

LANE REDUCTION TRANSITION
* LANE REDUCTION ARROWS REQUIRED AT SPEEDS OF 45 MPH OR GREATER OR WHEN SPECIFIED IN PLANS.

D(FT)	SPEED LIMIT
345	30
425	35
500	40
580	45
665	50
750	55

TYPE OF MARKING	WIDTH OF LINE	PATTERN	COLOR	SPACING / REMARKS
CENTERLINE ON 2 LANE PAVEMENT	4 (100)	SKIP-DASH	YELLOW	10' (3 m) LINE WITH 30' (9 m) SPACE
CENTERLINE ON MULTI-LANE UNDIVIDED PAVEMENT	2 @ 4 (100)	SOLID	YELLOW	11 (280) C-C
NO PASSING ZONE LINES: FOR ONE DIRECTION FOR BOTH DIRECTIONS	4 (100) 2 @ 4 (100)	SOLID SOLID	YELLOW YELLOW	5 1/2 (140) C-C FROM SKIP-DASH CENTERLINE 11 (280) C-C OMIT SKIP-DASH CENTERLINE BETWEEN
LANE LINES	4 (100) 5 (125) ON FREEWAYS	SKIP-DASH SKIP-DASH	WHITE WHITE	10' (3 m) LINE WITH 30' (9 m) SPACE
DOTTED LINES (EXTENSIONS OF CENTER, LANE OR TURN LANE MARKINGS)	SAME AS LINE BEING EXTENDED	SKIP-DASH	SAME AS LINE BEING EXTENDED	2' (600) LINE WITH 6' (1.8 m) SPACE
EDGE LINES	4 (100)	SOLID	YELLOW-LEFT WHITE-RIGHT	OUTLINE MEDIANS IN YELLOW
TURN LANE MARKINGS	6 (150) LINE; FULL SIZE LETTERS & SYMBOLS (8' (2.4m))	SOLID	WHITE	SEE TYPICAL TURN LANE MARKING DETAIL
TWO WAY LEFT TURN MARKING	2 @ 4 (100) EACH DIRECTION 8' (2.4m) LEFT ARROW	SKIP-DASH AND SOLID IN PAIRS	YELLOW WHITE	10' (3 m) LINE WITH 30' (9 m) SPACE FOR SKIP-DASH; 5 1/2 (140) C-C BETWEEN SOLID LINE AND SKIP-DASH LINE SEE TYPICAL TWO-WAY LEFT TURN MARKING DETAIL
CROSSWALK LINES (PEDESTRIAN) A. DIAGONALS (BIKE & EQUESTRIAN) B. LONGITUDINAL BARS (SCHOOL)	2 @ 6 (150) 2' (600) APART 2' (600) APART	SOLID SOLID SOLID	WHITE WHITE WHITE	NOT LESS THAN 6' (1.8 m) APART SEE TYPICAL CROSSWALK MARKING DETAILS.
STOP LINES	24 (600)	SOLID	WHITE	PLACE 4' (1.2 m) IN ADVANCE OF AND PARALLEL TO CROSSWALK, IF PRESENT. OTHERWISE, PLACE AT DESIRED STOPPING POINT. PARALLEL TO CROSSROAD CENTERLINE, WHERE POSSIBLE
PAINTED MEDIANS	2 @ 4 (100) WITH 12 (300) DIAGONALS @ 45° NO DIAGONALS USED FOR 4' (1.2 m) WIDE MEDIANS	SOLID	YELLOW: TWO WAY TRAFFIC WHITE: ONE WAY TRAFFIC	11 (280) C-C FOR THE DOUBLE LINE SEE TYPICAL PAINTED MEDIAN MARKING.
GORE MARKING AND CHANNELIZING LINES	8 (200) WITH 12 (300) DIAGONALS @ 45°	SOLID	WHITE	DIAGONALS: 15' (4.5 m) C-C (LESS THAN 30MPH (50 km/h)) 20' (6 m) C-C 30MPH (50 km/h) TO 45MPH (70 km/h) 30' (9 m) C-C (OVER 45MPH (70 km/h))
RAILROAD CROSSING	24 (600) TRANSVERSE LINES: "RR" 15' 6" (1.8 m) LETTERS; 16 (400) LINE FOR "X"	SOLID	WHITE	SEE STATE STANDARD 780001 AREA OF: "R"=3.6 SQ. FT. (0.33 m ²) EACH "X"=54.0 SQ. FT. (5.0 m ²)
SHOULDER DIAGONALS (REQUIRED FOR SHOULDERS ≥ 8')	12 (300) @ 45°	SOLID	WHITE - RIGHT YELLOW - LEFT	50' (15 m) C-C (LESS THAN 30MPH (50 km/h)) 75' (25 m) C-C (30 MPH (50 km/h) TO 45MPH (70 km/h)) 150' (45 m) C-C (OVER 45MPH (70 km/h))
U TURN ARROW	SEE DETAIL	SOLID	WHITE	16.3 SF
2 ARROW COMBINATION LEFT AND U TURN	SEE DETAIL	SOLID	WHITE	30.4 SF

FOR FURTHER DETAILS ON PAVEMENT MARKING REFER TO STANDARD SPECIFICATIONS FOR ROAD AND BRIDGE CONSTRUCTION AND STATE STANDARD 780001.

All dimensions are in inches (millimeters) unless otherwise shown.

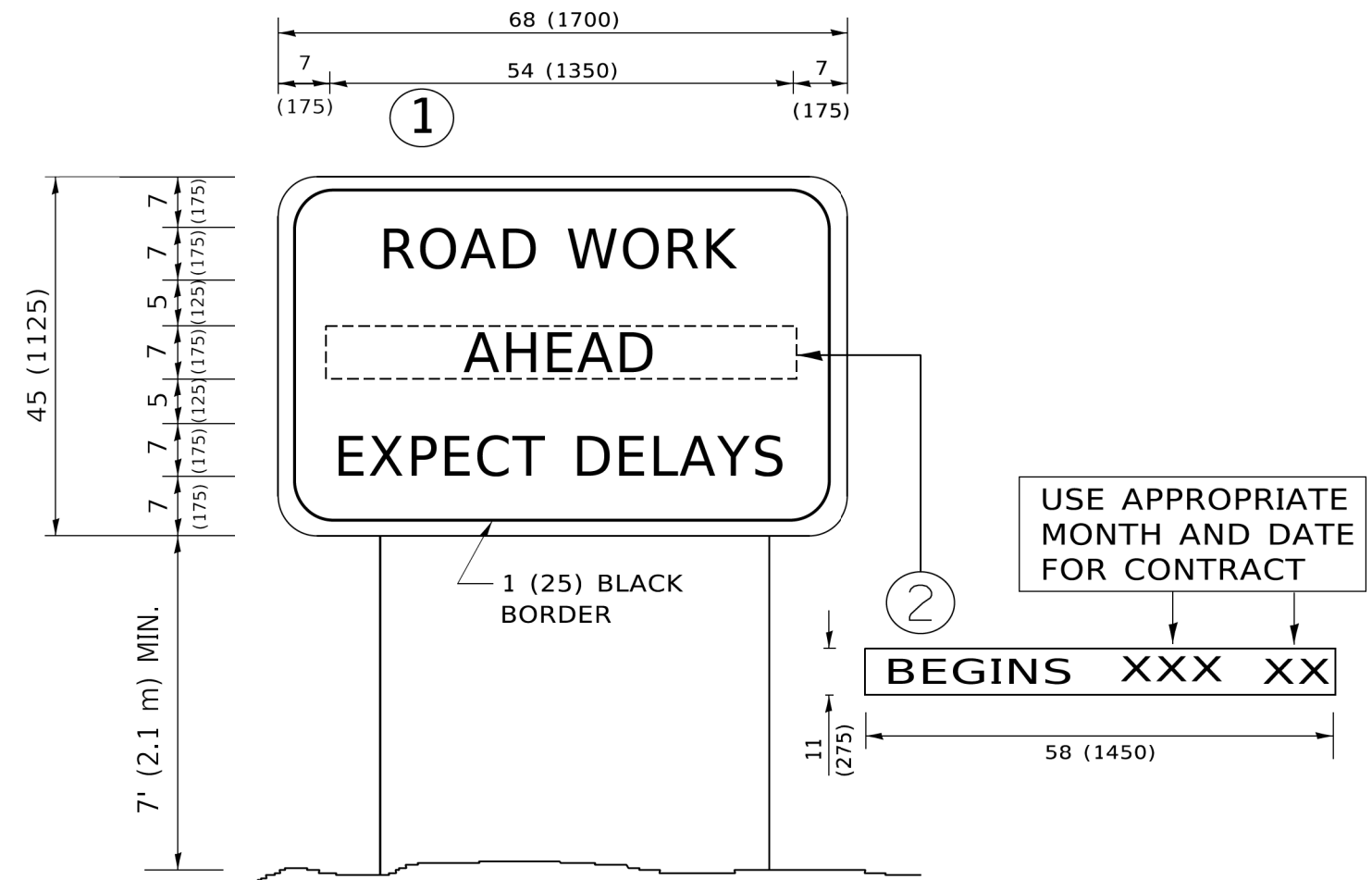
MODEL: Default
FILE: M:\110484\BID\INTEC\Illinois.gov\WIDOT\Documents\DOT Offices\District 1\Projects\Dist5\272-21\CADD\Plan\CD\sheet\13.dwg

USER NAME = footemj	DESIGNED - EVERS	REVISED - C. JUCIUS 09-09-09
PLOT SCALE = 50.00000 ' / ft.	DRAWN -	REVISED - C. JUCIUS 07-01-13
PLOT DATE = 3/4/2019	CHECKED -	REVISED - C. JUCIUS 12-21-15
	DATE - 03-19-90	REVISED - C. JUCIUS 04-12-16

**STATE OF ILLINOIS
DEPARTMENT OF TRANSPORTATION**

DISTRICT ONE		F.A. RTE.	SECTION	COUNTY	TOTAL SHEETS	SHEET NO.
TYPICAL PAVEMENT MARKINGS		2749	22-00245-00-R5	LAKE	16	15
SCALE: NONE	SHEET 1 OF 1 SHEETS	STA. TO STA.	TC-13			
			ILLINOIS / FED. AID PROJECT			

DISTRICT ONE		F.A. RTE.	SECTION	COUNTY	TOTAL SHEETS	SHEET NO.
TYPICAL PAVEMENT MARKINGS		2749	22-00245-00-R5	LAKE	16	15
SCALE: NONE	SHEET 1 OF 1 SHEETS	STA. TO STA.	TC-13			
			ILLINOIS / FED. AID PROJECT			



NOTES:

1. USE BLACK LETTERING ON ORANGE BACKGROUND.
2. ERECT SIGNS IN ADVANCE OF THE LOCATION FOR THE "ROAD CONSTRUCTION AHEAD" SIGN AT LOCATIONS AS DIRECTED BY THE ENGINEER.
3. ERECT SIGN ① WITH INSTALLED PANEL ② ONE WEEK PRIOR TO THE START OF CONSTRUCTION.
4. REMOVE PANEL ② SOON AFTER THE START OF CONSTRUCTION.
5. SEE SPECIAL PROVISION FOR "TEMPORARY INFORMATION SIGNING" FOR ADDITIONAL INFORMATION.
6. ONE SIGN ASSEMBLY EQUALS 25.70 SQ. FT. (2.3 SQ. M.)
7. SHALL BE PAID FOR AS TEMPORARY INFORMATION SIGNING.

ALL DIMENSIONS ARE IN INCHES (MILLIMETERS) UNLESS OTHERWISE SHOWN.

MODEL: Default
 FILE NAME: P:\01108418\BID\NTEG\Illinois.gov\PIV\DOT\Documents\DOT_Offices\District_1\Projects\Dist5\273-21\CADD\Info\CAD\Sheet\TC22.dgn

USER NAME = footemj	DESIGNED -	REVISED - R. MIRS 09-15-97
	DRAWN -	REVISED - R. MIRS 12-11-97
PLOT SCALE = 50,0000 ' / ft.	CHECKED -	REVISED - T. RAMMACHER 02-02-99
PLOT DATE = 3/4/2019	DATE -	REVISED - C. JUCIUS 01-31-07

**STATE OF ILLINOIS
DEPARTMENT OF TRANSPORTATION**

**ARTERIAL ROAD
INFORMATION SIGN**

SCALE: NONE SHEET 1 OF 1 SHEETS STA. TO STA.

F.A. RTE.	SECTION	COUNTY	TOTAL SHEETS	SHEET NO.
2749	22-00245-00-R5	LAKE	16	16
TC-22			CONTRACT NO. 61K51	
ILLINOIS FED. AID PROJECT				