

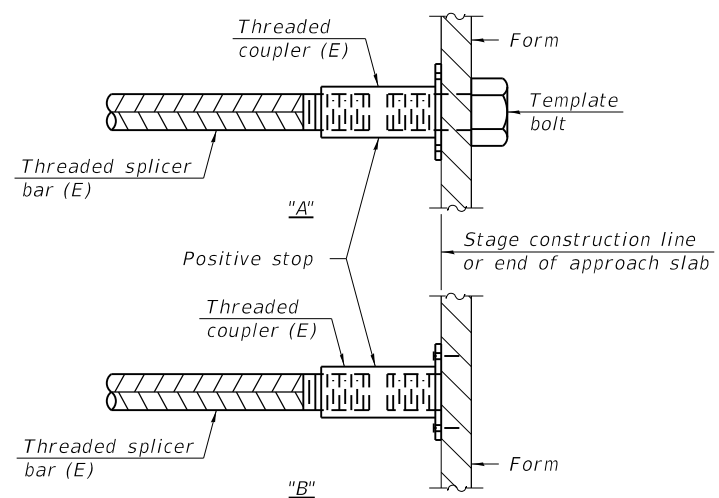
STANDARD BAR SPLICER ASSEMBLY PLAN
 (All components shall be provided from one supplier)

Threaded splicer bar length = min. lap length + 1 1/2" + thread length

* Epoxy not required on Bar Splicer Assembly components used in conjunction with black bars.

Location	Bar size	No. assemblies	Minimum lap length
West Abutment Exp. Jt.	5	10	3'-6"
	6	4	4'-0"
East Abutment Exp. Jt.	5	10	3'-6"
	6	6	4'-0"

1

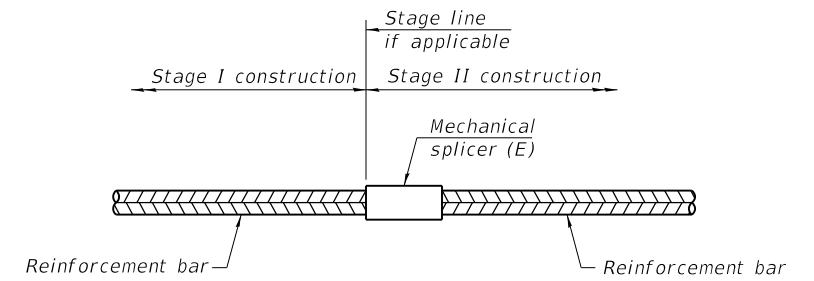


INSTALLATION AND SETTING METHODS

"A" : Set bar splicer assembly by means of a template bolt.

"B" : Set bar splicer assembly by nailing to wood forms or cementing to steel forms.

(E) : Indicates epoxy coating.



STANDARD MECHANICAL SPLICER

Location	Bar size	No. assemblies required

Notes:

Splicer bars shall be deformed with threaded ends and have a minimum 60 ksi yield strength.

All reinforcement shall be lapped and tied to the splicer bars.

Bar splicer assemblies shall be epoxy coated according to the requirements for reinforcement bars. See Section 508 of the Standard Specifications.

See approved list of bar splicer assemblies and mechanical splicers for alternatives.

MODEL: Default
 FILE NAME: P:\2004-825 PTB195-014 HBM\WO#7 1-90 Various Overlays\Western Ave\Sheet Files\0160128-62K73-520-Bar Splicer Assembly Details.dgn

BSD-1

1-1-2020



USER NAME =	DESIGNED - LAB, FL	REVISED - 1 LAB 07/16/2024
	CHECKED - MAI, MI	REVISED -
PLOT SCALE =	DRAWN - FL	REVISED -
PLOT DATE =	DATE - 4/29/2024	REVISED -

STATE OF ILLINOIS
 DEPARTMENT OF TRANSPORTATION

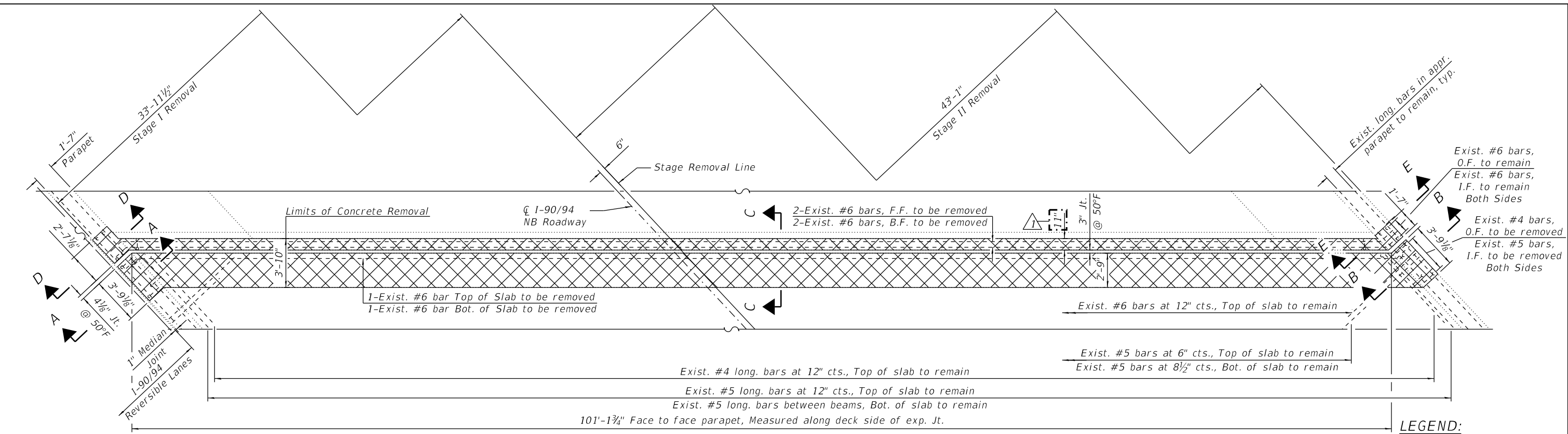
BAR SPLICER ASSEMBLY AND MECHANICAL SPLICER DETAILS
 STRUCTURE NO. 016-0128 (NB)

SHEET S08-24 OF S08-24 SHEETS

REVISED SHEET 7/17/2024

F.A.I. RTE. 90/94	SECTION 2020-005-BR	COUNTY COOK	TOTAL SHEETS 908	SHEET NO. 653
CONTRACT NO. 62K73				
ILLINOIS FED. AID PROJECT				

MODEL: Default
 FILE NAME: Q:\Engineering\Live\Projects\20003_IDOT DUR_HBMW08-62K73 - SH\CADD\CADD Sheets\Structural\0160127-62K73_190 over Logan\0160127-62K73-012-N_Abut. Exp. Idnt Rem. & Rep. Idgn

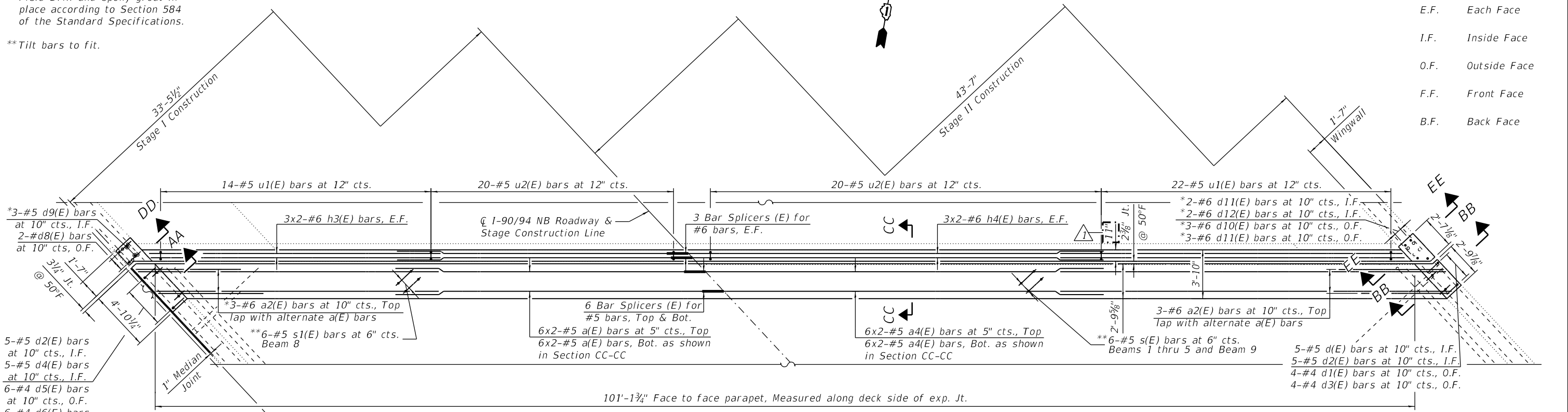


NORTH ABUTMENT JOINT REMOVAL PLAN

*Field Drill and epoxy grout in place according to Section 584 of the Standard Specifications.
 **Tilt bars to fit.

LEGEND:

	Concrete Removal
E.F.	Each Face
I.F.	Inside Face
O.F.	Outside Face
F.F.	Front Face
B.F.	Back Face



NORTH ABUTMENT JOINT RECONSTRUCTION PLAN

- NOTES:**
- Horizontal bars in approach parapets shall be cleaned, straightened, and reused in new construction.
 - For Sections A-A, B-B, C-C, AA-AA, BB-BB and CC-CC, see Sheet S10-13.
 - For Sections D-D, E-E, DD-DD and EE-EE, additional Notes, Bar diagrams and Bill of Material, see Sheet S10-14.



USER NAME =	DESIGNED - IH	REVISED - 7/16/2024 IH.
CHECKED - MAF	REVISIONS -	
PLOT SCALE =	DRAWN - IH	REVISIONS -
PLOT DATE =	CHECKED - MAF	REVISIONS -

**STATE OF ILLINOIS
 DEPARTMENT OF TRANSPORTATION**

REVISION 1 REVISED SHEET 7/15/2024
**N. ABUT. JOINT REMOVAL & REPLACEMENT (SHEET 1 OF 3)
 STRUCTURE NUMBER 016-0127 (NB)**

SHEET S10-12 OF S10-21 SHEETS

F.A.I. RTE.	SECTION	COUNTY	TOTAL SHEETS	SHEET NO.
90/94	2020-005-BR	COOK	908	673
CONTRACT NO.			62K73	
ILLINOIS		FED. AID PROJECT		