

STATE OF ILLINOIS
DEPARTMENT OF PUBLIC WORKS AND BUILDINGS

DIVISION OF HIGHWAYS
PLANS FOR PROPOSED
FEDERAL AID HIGHWAY

BRIDGE REPAIR
EDENS EXPRESSWAY

KENNEDY EXPRESSWAY

F.A.I. 94, SECTION BR-1964-I X
COOK COUNTY

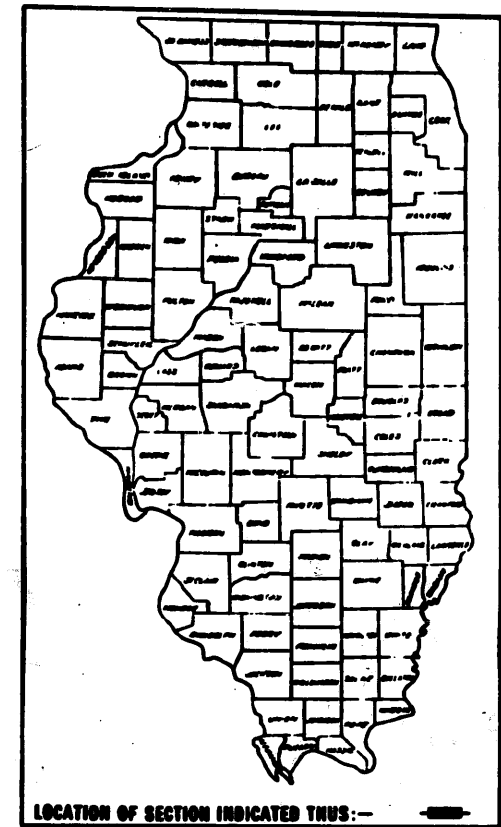
| | | | | |
|----------|-----|--------|-------|-----|
| STATE | SEC | COUNTY | SHEET | NO. |
| ILLINOIS | 94 | COOK | 9 | 1 |

PC-90-527-64

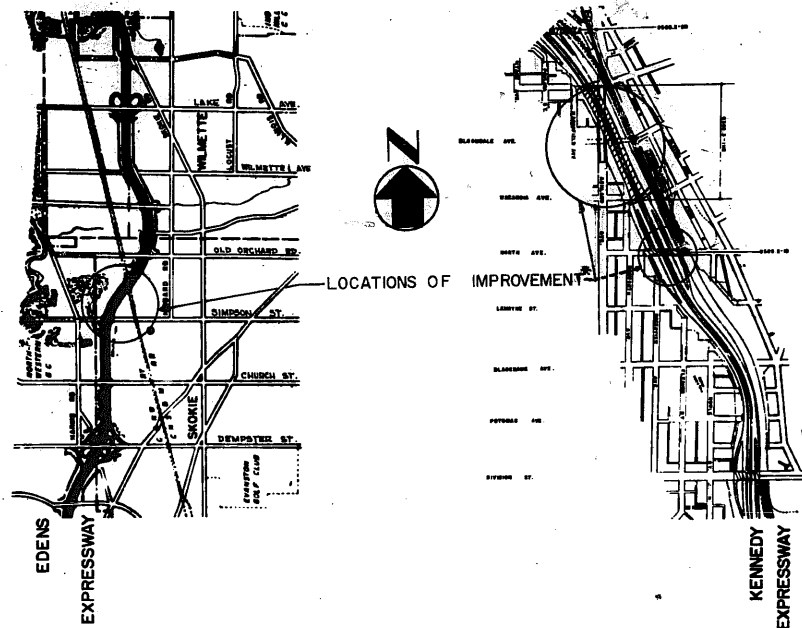
| INDEX OF SHEETS | |
|-----------------|--|
| SHEET No. | TITLE |
| 1 | TITLE SHEET, SUMMARY OF QUANTITIES |
| 2-4A | PLANS, BRIDGE REPAIRS |
| 5-6 | DETAILS AND PLACEMENT OF STD. BARRICADES AND WARNING SIGNS |
| 7-8 | DETAILS OF STANDARD SIGNS |
| 9 | 2165, 2114 |

| SUMMARY OF QUANTITIES | | | |
|-----------------------|---|----------|----------|
| CODE NO. | ITEM | UNIT | QUANTITY |
| 050001 | CLASS "A" EXCAVATION FOR STRUCTURES | CU. YD. | 64 |
| 052003 | CLASS X CONCRETE | CU. YD. | 19.6 |
| 052021 | PROTECTIVE COAT | SQ. YD. | 16,470 |
| 054001 | FURNISHING AND ERECTING STRUCTURAL STEEL | POUND | 4,756 |
| 059001 | REINFORCEMENT BARS | POUND | 725 |
| 080013 | LONGITUDINAL CURB EXPANSION JOINTS | SQ. FT. | 18 |
| 080015 | COMBINATION CONCRETE CURB & GUTTER, SPECIAL | LIN. FT. | 20 |
| 082005 | COMBINATION CURB AND GUTTER REMOVAL | LIN. FT. | 20 |
| 082006 | SIDEWALK REMOVAL | SQ. FT. | 68 |
| 083002 | SLOPE WALL 4" | SQ. YD. | 1,070 |
| 089005 | PORTLAND CEMENT CONCRETE SIDEWALK 7" | SQ. FT. | 68 |
| Z01023 | BRIDGE SEAT SEALANT | L. SUM | 1 |
| Z01343 | APPROACH SLAB REPAIR | SQ. FT. | 702 |
| Z01344 | DECK SLAB REPAIR | SQ. FT. | 11,780 |
| Z01345 | BRIDGE PARAPET REPAIR | LIN. FT. | 230 |
| Z01346 | EXPANSION DEVICE REMOVAL | LIN. FT. | 277 |
| Z01347 | CONCRETE DECK REMOVAL | CU. YD. | 18 |

* FOR SLOPE WALL



LOCATION OF SECTION INDICATED THUS: —



LOCATIONS OF IMPROVEMENT

DESCRIPTION OF IMPROVEMENT: THIS IMPROVEMENT CONSISTS OF REPAIRING THE EXISTING SIDEWALK, CURB AND GUTTER, APPROACH SLAB, ROADWAY DECK, EXPANSION JOINTS, AND PARAPET WALLS ON THE BRIDGES LOCATED AS SHOWN ON THE PLANS AND ALL OTHER INCIDENTAL AND COLLATERAL WORK NECESSARY TO COMPLETE THE IMPROVEMENT AS SHOWN ON THE PLANS AND DESCRIBED IN THE SPECIAL PROVISIONS.

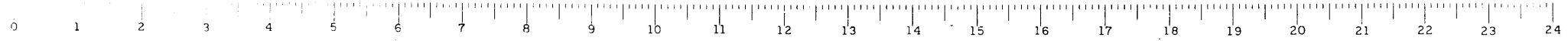
* OTHER LOCATIONS KNOWN TO NEED REPAIR ARE SHOWN ON SHEET NO. 4A. ANY OTHER LOCATION NOT SHOWN IN THIS PLAN TO NEED REPAIR SHALL BE DETERMINED BY THE ENGINEER IN THE FIELD.

APPROVED
FOR STRUCTURAL ADEQUACY ONLY
W.C. Bannerman 4/15/64
Engineer of Bridge & Traffic Structures

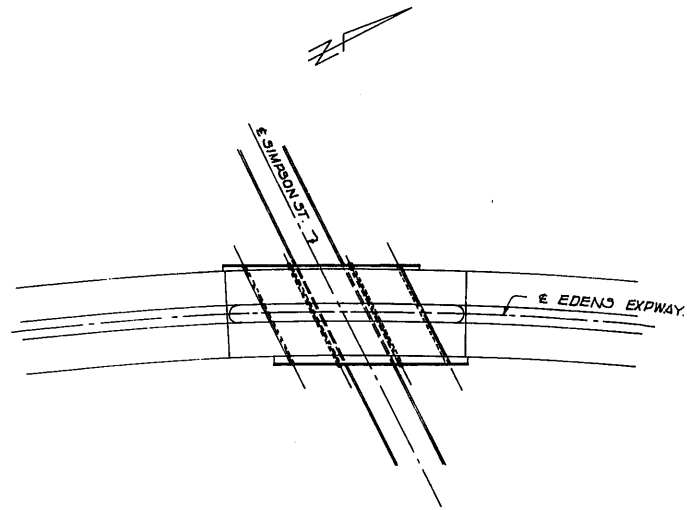
| STATE OF ILLINOIS DEPARTMENT OF PUBLIC WORKS AND BUILDINGS DIVISION OF HIGHWAYS | |
|---|-----------------------|
| DATE | 5-22-64 |
| BY | <i>C.A. Bannerman</i> |
| DATE | June 22 64 |
| BY | <i>C.O. Connors</i> |
| DATE | June 22 64 |
| BY | <i>[Signature]</i> |
| DATE | June 22 64 |
| BY | <i>[Signature]</i> |

PREPARED BY: *Henry M. Harnack* 5-22-64
EXPRESSWAY DESIGN ENGINEER
EXAMINED BY: *[Signature]* 5-22-64
EXPRESSWAY MAINTENANCE ENGINEER
EXAMINED BY: *[Signature]* 5/22/64
DISTRICT MATERIALS ENGINEER
EXAMINED BY: *Nathan C. Lawrence* 5-22-64
ASS'T. DIST. ENGR. ENGINEERING
EXAMINED BY: *Robert E. Kront* 5-22-64
ASS'T. DIST. ENGR. EXPRESSWAYS
ENTIRE SECTION INSPECTED
AND APPROVED AS TO POLICY
BY: *C.A. Bannerman*
DISTRICT ENGINEER

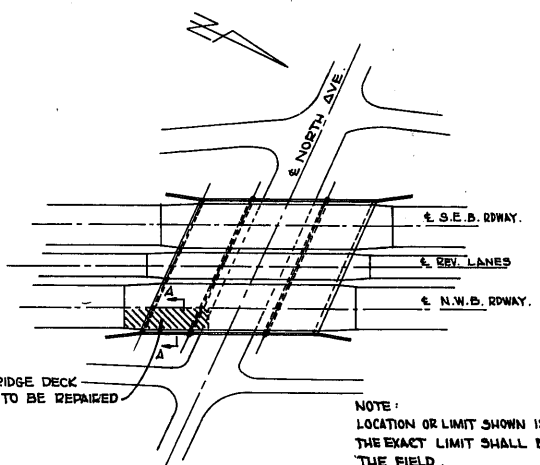
CONTRACT NO. 23742



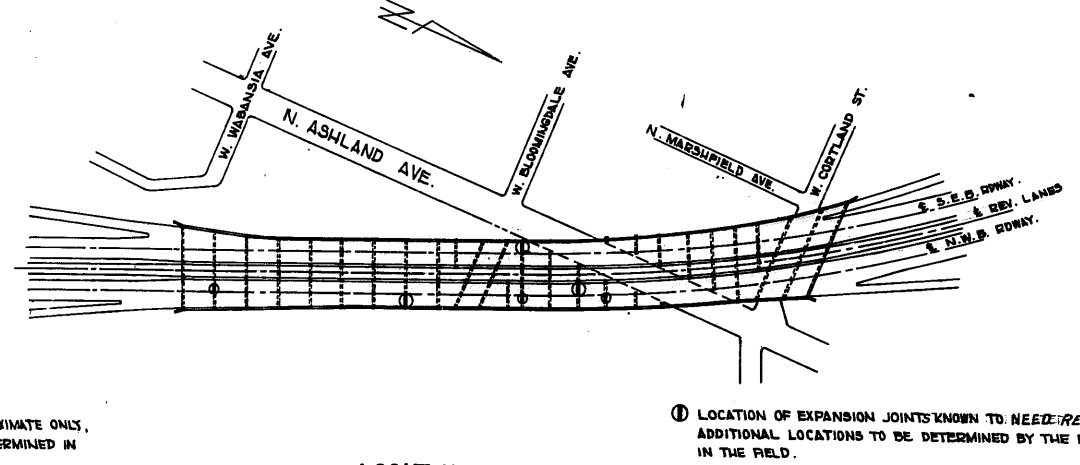
| | | | | |
|---|-----------|------------|--------------|-----------|
| STATE | SECTION | EXPRESSWAY | TOTAL SHEETS | SHEET NO. |
| 94 | BR-1064-1 | KENNEDY | 9 | 6 |
| STA. | TO STA. | | | |
| FED. ROAD DIST. NO. 7 ILLINOIS FED. AID PROJECT | | | | |



LOCATION PLAN
EDENS EXPWAY OVER SIMPSON
SCALE: 1" = 100'-0"

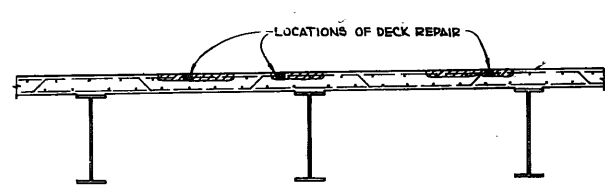


LOCATION PLAN
KENNEDY EXPWAY OVER NORTH AVE.
SCALE: 1" = 100'-0"

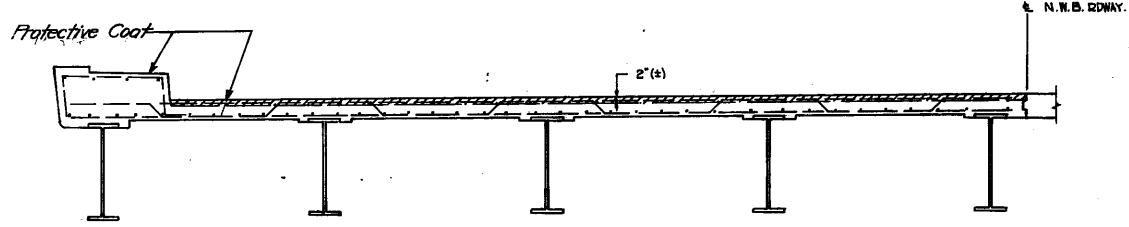


LOCATION PLAN
KENNEDY EXPWAY, GRADE SEPARATION
WABANSIA AVENUE TO CORTLAND STREET
SCALE: 1" = 200'-0"

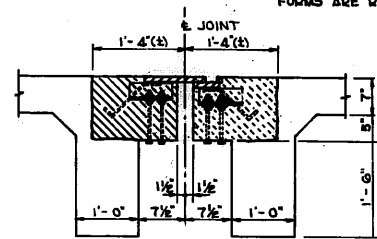
① LOCATION OF EXPANSION JOINTS KNOWN TO NEED REPAIR. ADDITIONAL LOCATIONS TO BE DETERMINED BY THE ENGINEER IN THE FIELD.



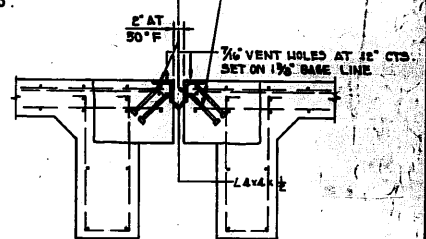
TYPICAL CROSS SECTION SHOWING
BRIDGE DECK REPAIRS ON EDENS EXPRESSWAY
OVER SIMPSON STREET
SCALE: 3/8" = 1'-0"



SECTION A-A SHOWING
BRIDGE DECK REPAIRS ON KENNEDY EXPWAY, N.W.B. RWAY.
OVER NORTH AVENUE
SCALE: 3/8" = 1'-0"

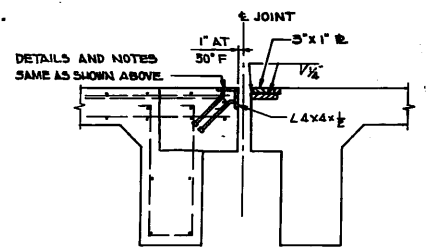


TYPICAL CROSS SECTION
SHOWING EXISTING EXPANSION DEVICES
TO BE REMOVED ON KENNEDY EXPY. GRADE SEPARATION
WABANSIA AVE. TO CORTLAND ST.
SCALE: 3/4" = 1'-0"



TYPICAL CROSS SECTION
SHOWING FULL EXPANSION DEVICE REPAIR
SCALE: 3/4" = 1'-0"

TO BE DETERMINED BY THE ENGINEER IN THE FIELD. IF THE EXISTING PLATE AND BAR ARE STILL SOUND, ONLY PARTIAL REPAIR AS SHOWN AT RIGHT IS REQUIRED.



TYPICAL CROSS SECTION
SHOWING PARTIAL EXPANSION DEVICE REPAIR
SCALE: 3/4" = 1'-0"

NOTE:
LOCATION, LENGTH AND WIDTH OF REPAIRS TO BE DETERMINED BY THE ENGINEER IN THE FIELD.
ALL AREAS TO BE REPAIRED SHALL BE CLEANED THOROUGHLY OF ALL DIRT AND BITUMINOUS MATERIAL BEFORE BONDING AGENT IS APPLIED TO THE SURFACE.

NOTE:
EXISTING COLORPHALT AND BITUMINOUS MATERIALS SHALL BE REMOVED COMPLETELY FROM AREA TO BE REPAIRED AND THE AREA CLEANED AS CALLED FOR IN THE SPECIAL PROVISIONS OR TO THE SATISFACTION OF THE ENGINEER. THIS WORK WILL NOT BE MEASURED FOR PAYMENT AND THE COST SHALL BE INCLUDED IN THE CONTRACT UNIT PRICE PER SQUARE FOOT OF DECK SLAB REPAIR OR APPROACH SLAB REPAIR.

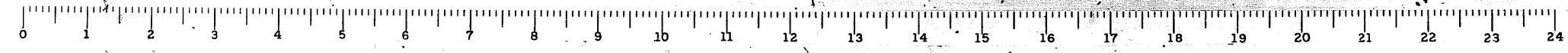
| ITEM | UNIT | SIMPSON ST. | NORTH AVE. | WABANSIA AV. | TOTAL |
|--------------------------|----------|-------------|------------|--------------|--------|
| DECK SLAB REPAIR | SQ. FT. | 7,650 | 2,025 | | 9,675 |
| APPROACH SLAB REPAIR | SQ. FT. | | 666 | | 666 |
| PROTECTIVE COAT | SQ. YD. | 1460 | 2,900 | 6890 | 11,250 |
| EXPANSION DEVICE REMOVAL | LIN. FT. | | | 175 | 175 |
| CONCRETE DECK REMOVAL | CU. YD. | | | 9 | 9 |
| STRUCTURAL STEEL | LB. | | | 3,165 | 3,165 |
| CLASS "X" CONCRETE | CU. YD. | | | 9 | 9 |

| REVISIONS | |
|-----------|------|
| NAME | DATE |
| | |
| | |
| | |

ILLINOIS DIVISION OF HIGHWAYS
KENNEDY EXPRESSWAY
EDENS EXPRESSWAY

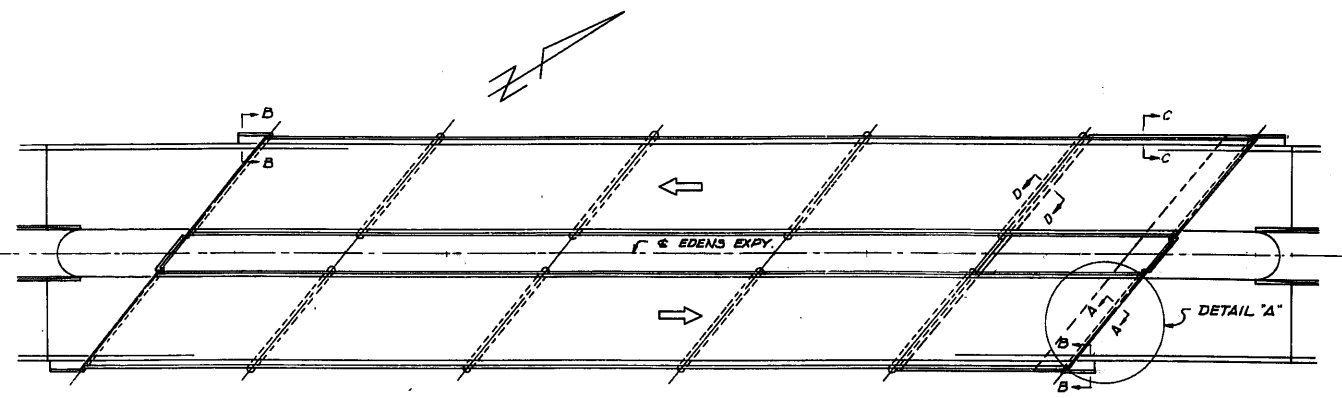
BRIDGE REPAIRS

SCALE: HORIZ. AS SHOWN
VERT. DATE
DRAWN BY ANK.
CHECKED BY

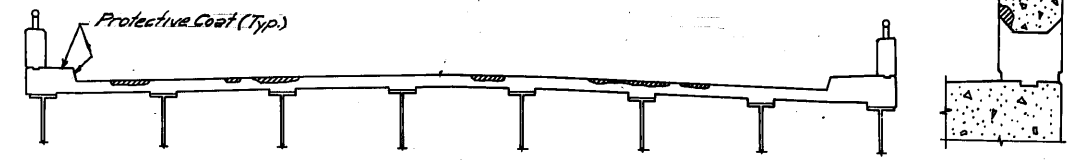


| FA. RTE. | SECTION | EXPRESSWAYS | TOTAL SHEETS | SHEET NO. |
|-----------------------|------------|---------------|------------------|-----------|
| 94 | BR-1964-14 | EDENS KENNEDY | 3 | 3 |
| STA. | TO STA. | | | |
| FED. ROAD DIST. NO. 7 | | ILLINOIS | FED. AID PROJECT | |

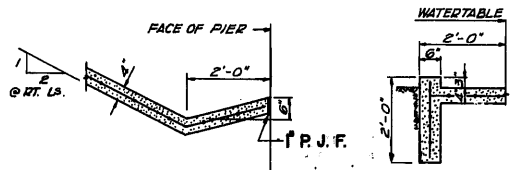
NOTES:
 DISINTEGRATED CONCRETE ALONG ROADWAY AND PARAPET SHALL BE REMOVED TO THE SATISFACTION OF THE ENGINEER AND REPLACED WITH P.C. MORTAR OR PNEUMATIC CONCRETE.
 LOCATION, LENGTH, AND WIDTH OF REPAIRS TO BE DETERMINED BY THE ENGINEER IN THE FIELD.
 EXISTING SURFACE SHALL BE TREATED WITH BONDING AGENT BEFORE P.C. MORTAR OR PNEUMATIC CONCRETE IS PLACED



LOCATION PLAN
 SCALE: 1" = 40'-0"

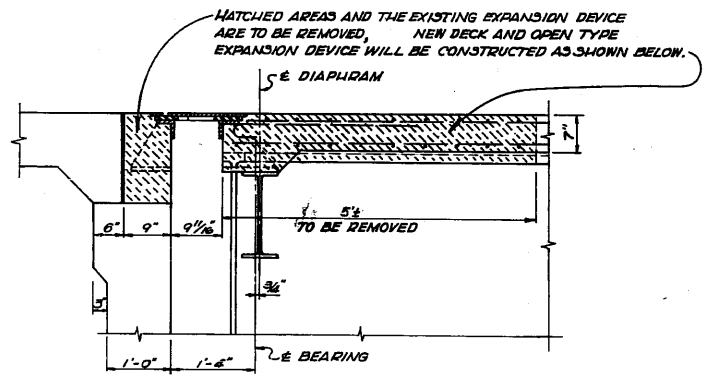


TYPICAL CROSS SECTION SHOWING BRIDGE DECK AND PARAPET REPAIR



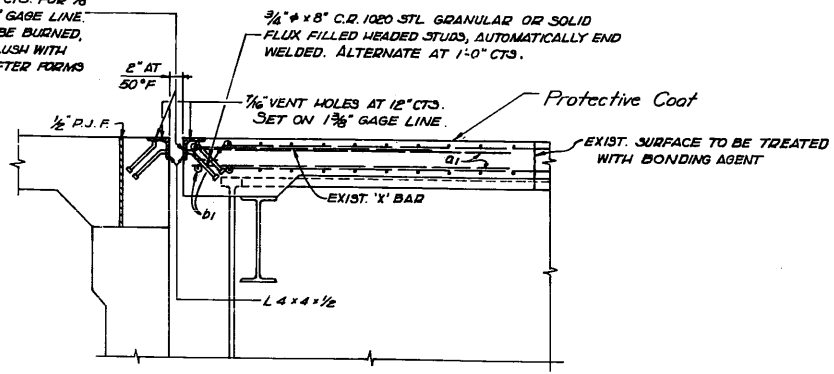
SECTION D-D SCALE: 1/2" = 1'-0"
SECTION C-C SCALE: 1/2" = 1'-0"

NOTE: THE CONSTRUCTION OF SLOPE WALL AT NORTH ABUTMENT SHALL BE PAID FOR AT THE CONTRACT UNIT PRICE PER SQUARE YARD FOR SLOPE WALL, WHICH PRICE SHALL INCLUDE PAYMENT FOR PREPARATION OF SUBGRADE, BACKFILLING, DISPOSAL OF SURPLUS MATERIAL, AND FURNISHING AND PLACING ALL MATERIALS INCLUDING FABRIC REINFORCEMENT.

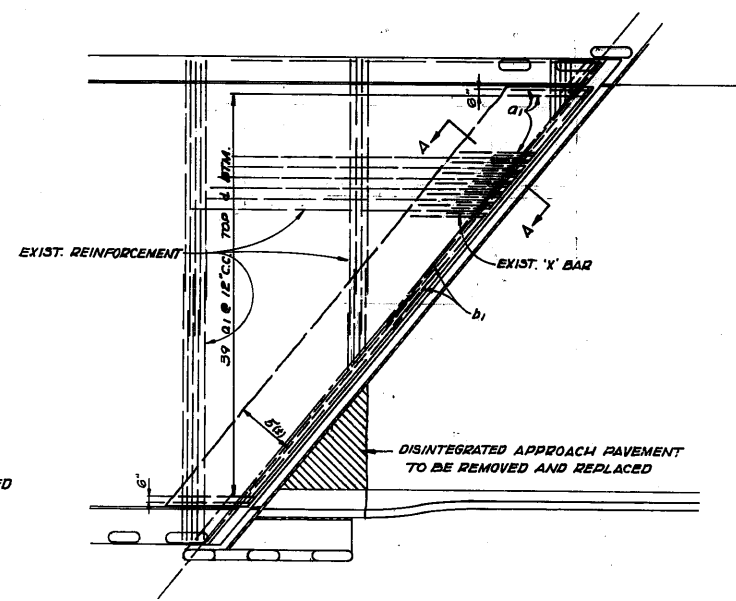


SECTION A-A (EXISTING)
 SCALE: 3/4" = 1'-0"

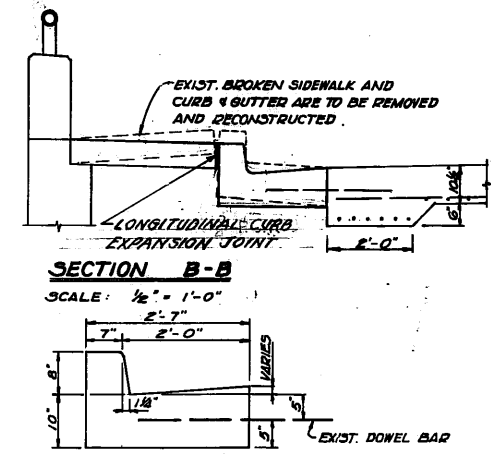
1/8" # HOLES AT 12" CTS. FOR 3/8" BOLTS SET ON 2 1/2" GAGE LINE. ALL BOLTS SHALL BE BURNED, OR CLIPPED OFF FLUSH WITH BACK OF ANGLES AFTER FORMS ARE REMOVED.



SECTION A-A (PROPOSED)
 SCALE: 3/4" = 1'-0"



DETAIL A
 SCALE: 1/8" = 1'-0"



SECTION B-B
 SCALE: 1/2" = 1'-0"

DETAIL OF CURB & GUTTER SPECIAL

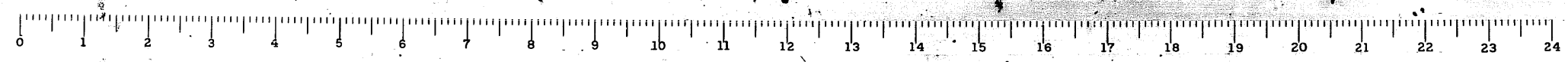
*WHERE OPEN TYPE EXPANSION JOINTS OCCUR OVER PIERS OR ABUTMENTS

BILL OF MATERIAL

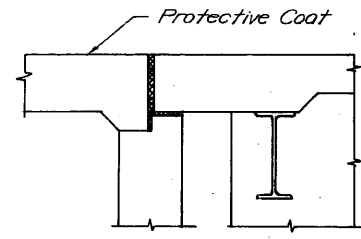
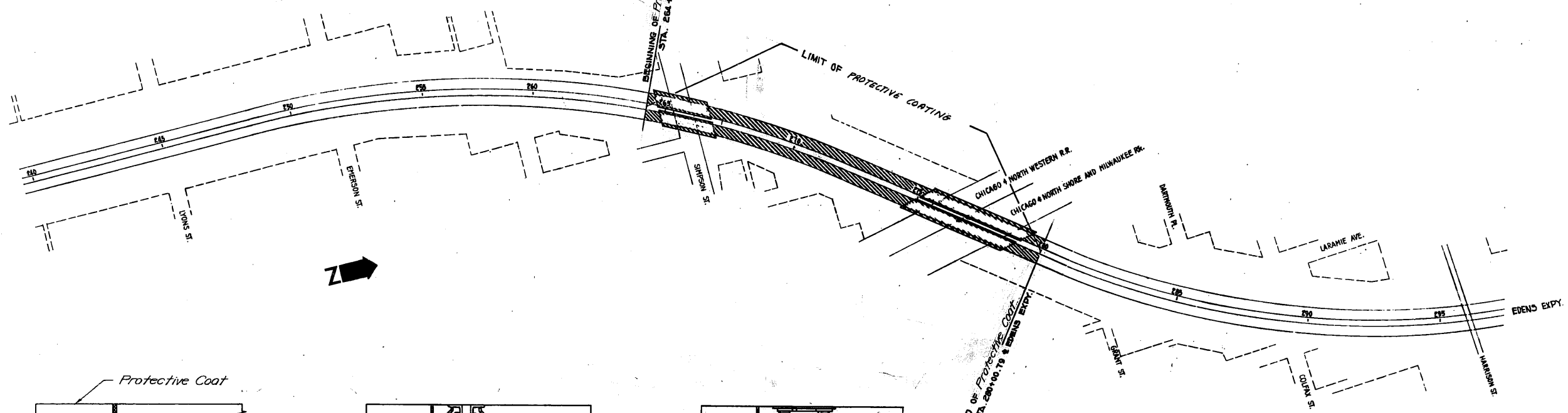
| BAR NO. | SIZE | LENGTH | SHAPE |
|-----------------------------------|------|----------|----------|
| a1 | 62 | 6 | 5'-0" |
| b1 | 4 | 5 | 26'-1" |
| ITEM | | UNIT | QUANTITY |
| EXPANSION DEVICE REMOVAL | | LIN. FT. | 102 |
| CONCRETE DECK REMOVAL | | CU. YD. | 9 |
| CLASS X CONCRETE | | CU. YD. | 10.5 |
| REINFORCEMENT BARS | | LB. | 725 |
| STRUCTURAL STEEL | | LB. | 1510 |
| COMB. CURB AND GUTTER REMOVAL | | LIN. FT. | 20 |
| SIDEWALK REMOVAL | | SQ. FT. | 68 |
| COMB. CONC. CURB AND GUTTER, 3P | | LIN. FT. | 20 |
| P.C. CONCRETE SIDEWALK T | | SQ. FT. | 68 |
| APPROACH SLAB REPAIR | | SQ. FT. | 36 |
| BRIDGE PARAPET REPAIR | | LIN. FT. | 230 |
| SLOPE WALL 4" | | SQ. YD. | 1,070 |
| DECK SLAB REPAIR | | SQ. FT. | 900 |
| CLASS 'A' EXCAV. FOR STRUCTURES | | CU. YD. | 64 |
| LONGITUDINAL CURB EXPANSION JOINT | | SQ. FT. | 18 |
| BRIDGE SEAT SEALANT | | L. SUM | 1 |
| PROTECTIVE COAT | | SQ. YD. | 465 |

| REVISIONS | |
|-----------|------|
| NAME | DATE |
| | |
| | |
| | |

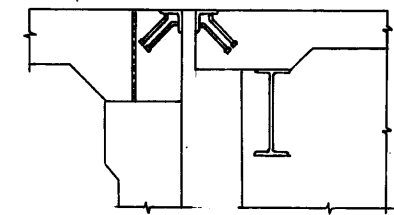
ILLINOIS DIVISION OF HIGHWAYS
 EDENS EXPRESSWAY
GRADE SEPARATION OVER C.N.S. & M. RY. AND C. & N.W. RY. BRIDGE REPAIRS
 SCALE: HORIZ. AS SHOWN VERT. AS SHOWN
 DATE: _____ DRAWN BY: A.M.K./D.C. CHECKED BY: _____



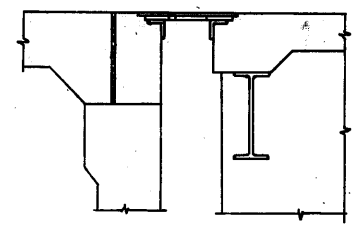
| | | | | |
|-----------------------|-------|-------------|------------------|--------------|
| F.A.L. ROUTE NO. | SEC. | EXPRESSWAYS | TOTAL QUANTITY | REVISION NO. |
| 154-11 | EDENS | KENNEDY | 9 | 4 |
| STA. TO STA. | | | | |
| FED. ROAD DIST. NO. 7 | | ILLINOIS | FED. AID PROJECT | |



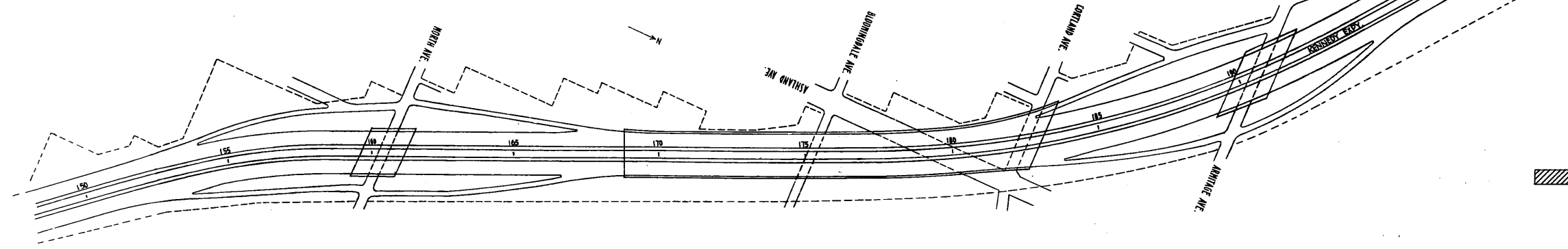
TYPICAL SECTION THRU ABUT.
SIMPSON STREET BRIDGE



TYPICAL SEC. THRU OPEN TYPE
EXPANSION JOINT, C. & N.W. BRIDGE



TYPICAL SEC. THRU SLIDING PLATE EXP. DEVICE
C. & N.W. BRIDGE



LOCATION TO BE COATED WITH PROTECTIVE COAT

| QUANTITIES | | |
|--|--------|----------|
| ITEM | UNIT | QUANTITY |
| Protective Coat Sta. 204+30.32 to 200+00.79 (Pavement Only) | Sq Yds | 4630 |
| | | |
| | | |

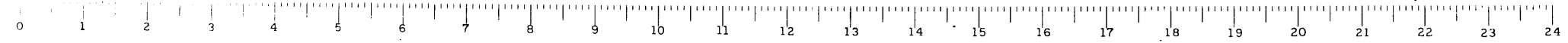
| REVISIONS | |
|-----------|------|
| NAME | DATE |
| | |
| | |
| | |

ILLINOIS DIVISION OF HIGHWAYS
KENNEDY EXPRESSWAY
EDENS EXPRESSWAY

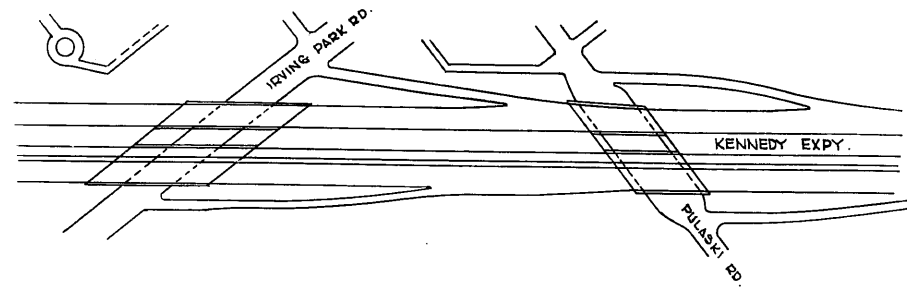
**PAVEMENT & BRIDGE REPAIRS
BITUMINOUS RESURFACING**

SCALE: HORIZ. 1" = 200'
VERT. 1" = 200'

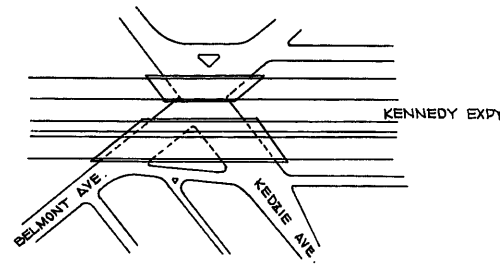
DRAWN BY: *120*
CHECKED BY: *120*



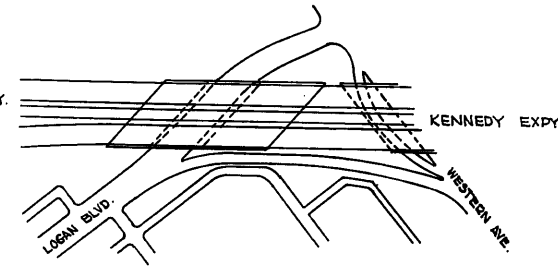
| | | | | |
|-----------------------|-------------|--------------------|--------------|-----------|
| F.A.I. ETC. | SECTION | EXPRESSWAYS | TOTAL SHEETS | SHEET NO. |
| | BR. 1464-14 | KENNEDY EXPRESSWAY | 9 | 4A |
| STA. | TO STA. | | | |
| FED. ROAD DIST. NO. 7 | ILLINOIS | FED. AID PROJECT | | |



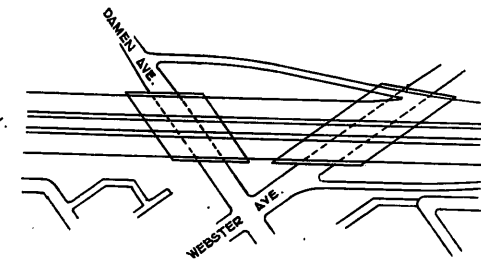
LOCATION PLAN
IRVING PARK RD. & PULASKI RD.
SCALE: 1" = 200'



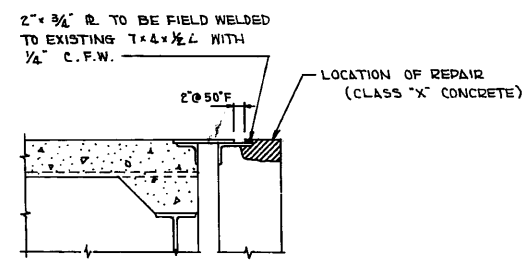
LOCATION PLAN
BELMONT AVENUE
SCALE: 1" = 200'



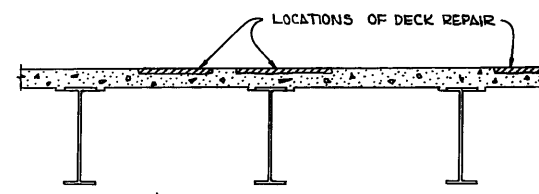
LOCATION PLAN
LOGAN BLVD.
SCALE: 1" = 200'



LOCATION PLAN
DAMEN AVENUE
SCALE: 1" = 200'



TYPICAL CROSS SECTION
SHOWING EXPANSION JOINT REPAIR ON KENNEDY EXPWAY.
OVER PULASKI ROAD
SCALE: 3/8" = 1'-0"



TYPICAL CROSS SECTION SHOWING
BRIDGE DECK REPAIRS ON KENNEDY EXPRESSWAY
AT LOCATIONS SHOWN ABOVE
SCALE: 3/8" = 1'-0"

NOTES:
DISINTEGRATED CONCRETE SHALL BE REMOVED TO THE SATISFACTION OF THE ENGINEER AND REPLACED WITH P.C. MORTAR OR PNEUMATIC CONCRETE. LOCATION, LENGTH, AND WIDTH OF REPAIRS TO BE DETERMINED BY THE ENGINEER IN THE FIELD. EXISTING SURFACE SHALL BE TREATED WITH BONDING AGENT BEFORE P.C. MORTAR OR PNEUMATIC CONCRETE IS PLACED.

| ITEM | UNIT | IRVING PK. RD. | PULASKI RD. | BELMONT AVE. | LOGAN BLVD. | DAMEN AVE. | TOTAL |
|--------------------|---------|----------------|-------------|--------------|-------------|------------|-------|
| DECK SLAB REPAIR | SQ. FT. | 50 | 20 | 15 | 1000 | 120 | 1205 |
| CLASS 'X' CONCRETE | CU. YD. | - | 0.1 | - | - | - | 0.1 |
| STRUCTURAL STEEL | LB. | - | 61 | - | - | - | 61 |
| PROTECTIVE COAT | SQ. YD. | 6 | 2 | 2 | 111 | 13 | 134 |

| REVISIONS | |
|-----------|------|
| NAME | DATE |
| | |
| | |
| | |

ILLINOIS DIVISION OF HIGHWAYS
KENNEDY EXPRESSWAY
BRIDGE DECK REPAIRS
SCALE: HORIZ. AS SHOWN
VERT. DATE: JUNE 5, 1964
DRAWN BY: AMK
CHECKED BY:

