

STATE OF ILLINOIS
 DEPARTMENT OF TRANSPORTATION
 DIVISION OF HIGHWAYS
**PLANS FOR PROPOSED
 FEDERAL AID INTERSTATE HIGHWAY**

FOR INDEX OF SHEETS, SEE SHEET NO. 2

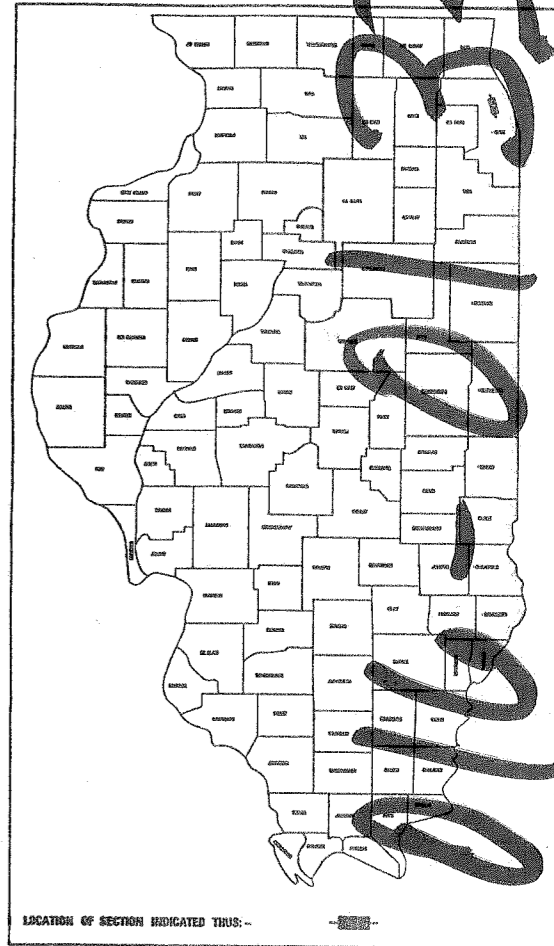
PLAN 1"=50'
 PROFILE HORZ. 1"=25'
 PROFILE VERT. 1"=5'
 CROSS SECTIONS 1"=10'
 CROSS SECTIONS 1"=5'

F.A.I. ROUTE 9094 (JOHN F. KENNEDY EXPRESSWAY)
 SECTION 0505.3-1H-F-1
 PROJECT : DPI-0137(15)
 COOK COUNTY
 C-91-446-93

P.P.C BEAM AND BEARING FABRICATION (NORTHWEST BOUND)

PA. RTE.	SECTION	COUNTY	TOTAL SHEETS	SHEET NO.
F.A.I. 9094	0505.3-1H-F-1	COOK	12	1

P - 91 - 31 - 86



LOCATION OF SECTION INDICATED THIS -



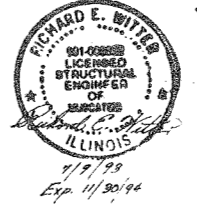
PROJECT AND IMPROVEMENT
 ENDS STATION 200+00.00
 @ NWB F.A.I. - 9094

PROJECT AND IMPROVEMENT
 BEGINS STATION 192+92.70
 @ NWB F.A.I. - 9094

THIS PROJECT CONSISTS OF
 FABRICATION OF P.P.C. BEAMS
 AND BEARINGS.

NORTHWEST BOUND
 BRIDGE:
 ASHLAND STA. 198+61.32 TO STA. 213+04.16

LOCATION MAP
 SCALE: 2"=1 MILE



STATE OF ILLINOIS
 DEPARTMENT OF TRANSPORTATION
 DIVISION OF HIGHWAYS

SUBMITTED Sept 13 1993 BY James P. Calkins COUNTY ENGINEER

EXAMINED _____ BY _____ ENGINEER OF PLANS AND CONTRACTS

PASSED SEPT 30 1993 BY George H. Hall CHIEF ENGINEER

APPROVED SEPT 3 1993 BY Ralph C. Welner DEPUTY CHIEF ENGINEER

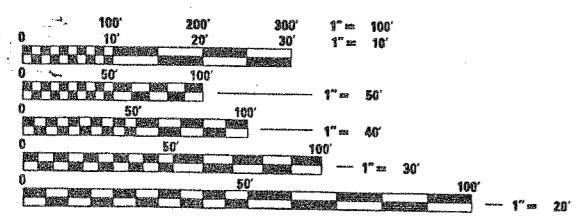
DEPARTMENT OF TRANSPORTATION
 FEDERAL HIGHWAY ADMINISTRATION

APPROVED _____ DATE _____

PRINTED UNDER THE AUTHORITY
 OF THE STATE OF ILLINOIS

CONSULTANT SERVICES - P. SURI (708) 765-4523

MUNICIPALITY INVOLVEMENT - CITY OF CHICAGO



FULL SIZE PLANS HAVE BEEN PREPARED USING STANDARD
 ENGINEERING SCALES, REDUCED SIZED PLANS WILL NOT
 CONFORM TO STANDARD SCALES, IN MAKING MEASUREMENTS
 ON REDUCED PLANS, THE ABOVE SCALES MAY BE USED.

CONTRACT NO. 82543

STATE OF ILLINOIS
DEPARTMENT OF TRANSPORTATION

ROUTE NO.	SEC.	COUNTY	TOTAL SHEETS	SHEET NO.	SHEET NO. 2
F.A.I. 98/94	*	COOK	12	2	2 SHEETS
BLVD'S					

0602,3-H-F-1

CODE #	PAY ITEM	UNIT	TOTAL QUANTITY	CONSTR. CODE X571-50
X5052300	FURNISHING PPC I-BEAMS, 48'	LIN. FT.	2512	2512
X5052100	FURNISHING PPC I-BEAMS, 36'	LIN. FT.	113	113
X0320622	FIELD MEASUREMENTS	LUMP SUM	1	1
X0301649	STORAGE OF FABRICATED MATERIALS, PPC BEAMS	UNIT	600	600
X0301596	STORAGE OF FABRICATED MATERIALS, BEARING ASSEMBLIES	UNIT	62	62
X5032700	FURNISHING ELASTOMERIC BEARING ASSEMBLY, TYPE I	EACH	41	41

GENERAL NOTES:

1. PLAN DIMENSIONS AND DETAILS RELATIVE TO EXISTING STRUCTURES HAVE BEEN TAKEN FROM EXISTING PLANS AND ARE SUBJECT TO NOMINAL CONSTRUCTION VARIATIONS. IT SHALL BE THE CONTRACTOR'S RESPONSIBILITY TO VERIFY SUCH DIMENSIONS AND DETAILS IN THE FIELD AND MAKE NECESSARY APPROVED ADJUSTMENTS PRIOR TO CONSTRUCTION OR ORDERING OF MATERIALS. SUCH VARIATIONS SHALL NOT BE CAUSE FOR ADDITIONAL COMPENSATION FOR A CHANGE IN THE SCOPE OF WORK, HOWEVER, THE CONTRACTOR WILL BE PAID FOR THE QUANTITY ACTUALLY FURNISHED AT THE UNIT PRICE BID FOR THE WORK.
2. ALL EXPOSED STEEL MATERIALS SHALL BE SHOP PAINTED WITH THE ZINC-SILICATE AND VINYL PAINT SYSTEM. THE COLOR OF THE VINYL FINISH COATS SHALL BE RUSSELL NO. 10Y 7/1 LIGHT GREY.

DESIGN SPECIFICATIONS:

AASHTO 1990
LOADING HS20-44 AND ALTERNATE MILITARY LOADING
ALLOW 25 PSF FOR FUTURE WEARING SURFACE.

DESIGN STRESSES:

REINFORCED CONCRETE & STRUCTURAL STEEL
 $F_y = 60,000$ psi (REINFORCEMENT)
 $F_u = 20,000$ psi (A709, GR. 36) (STRUCTURAL STEEL)

PRESTRESSED CONCRETE & PRETENSIONING STEEL
 $F'_c = 5,000$ PSI
 $F'_{ci} = 5,000$ PSI
 $F'_{ps} = 270,000$ PSI (1/2" DIA STRANDS)
 $F'_{si} = 202,000$ PSI

INDEX OF SHEETS

SHEET NO.	DESCRIPTION
1.	COVER SHEET
2.	SUMMARY OF QUANTITIES AND GENERAL NOTES
3.	GENERAL PLAN AND ELEVATION SHEET 1 OF 2
4.	GENERAL PLAN AND ELEVATION SHEET 2 OF 2
5.	TOP OF SLAB ELEVATIONS SHEET 1 OF 2
6.	TOP OF SLAB ELEVATIONS SHEET 2 OF 2
7.	48" PRESTRESSED BEAM DETAILS
8.	BEAM SCHEDULE
9.	36" PRESTRESSED BEAM DETAILS
10.	BEARING DETAILS
11.	BEARING DETAILS
12.	ANCHOR BOLT DETAILS

FOR FABRICATION ONLY

SUMMARY OF QUANTITIES
AND GENERAL NOTES

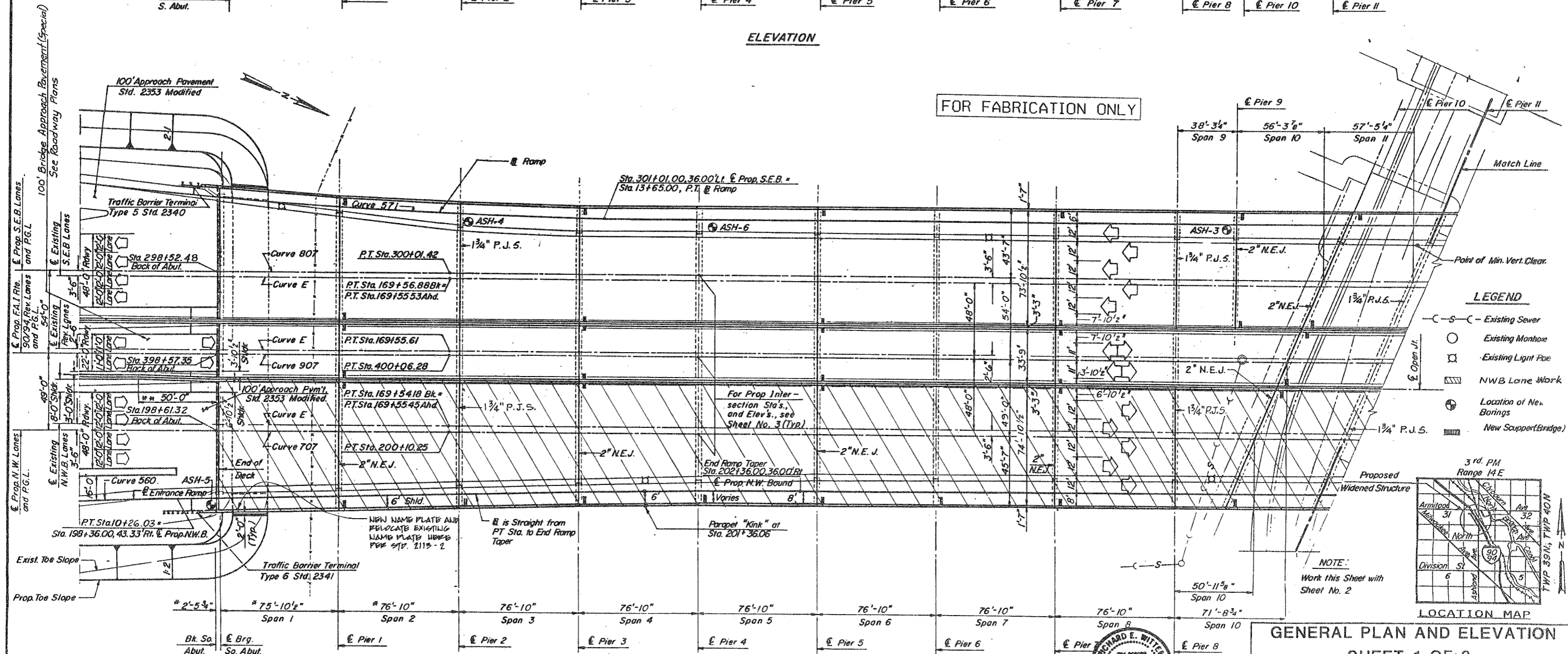
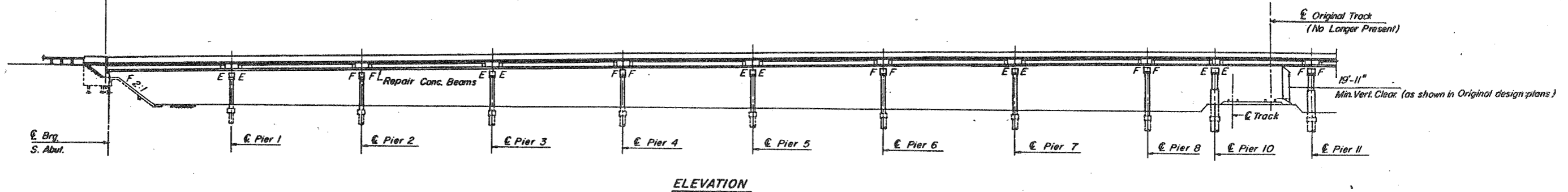
F.A.I. ROUTE 98 / 94 OVER ASHLAND AVENUE
COOK COUNTY
STATION 489+49

Rev.

TBM - CHISELED SQUARE - TOP OF CONCRETE SLOPE OF N. ABUTMENT ADJACENT TO N.E. WINGWALL - FAI-90/94 BRIDGE OVER ASHLAND AVENUE - EL.604.09 (U.S.G.S. DATUM)

STATE OF ILLINOIS
DEPARTMENT OF TRANSPORTATION

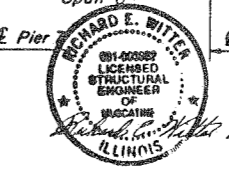
ROUTE NO.	SECTION	COUNTY	TOTAL SHEETS	SHEET NO.	SHEET NO.
F.A.I. 90/94	X	COOK	12	3	OF 12 SHEETS
FED. ROAD DIST. NO. 7 ILLINOIS FED. AID PROJECT - *0505.3-BI-F-1					



APPROVED
STRUCTURAL ADEQUACY ONLY
Ralph E. Anderson
Chief of Bridges and Structures

PLAN
Measured at Rt. Angles to E Substructure
* * 50'-0" - Transition Length for Shoulder Widths (At open Joint between Rev. Lanes and N.W.B. Lanes only)

NOTE: THIS PLAN VIEW SHOWS THE PROPOSED (FINAL) DEVELOPMENT OF THE BRIDGE. THIS CONTRACT COVERS RWB LANE WORK ONLY.
Note: N.E.J. = Neoprene Expansion Joint.
P.J.S. = PREFORMED JOINT SEAL

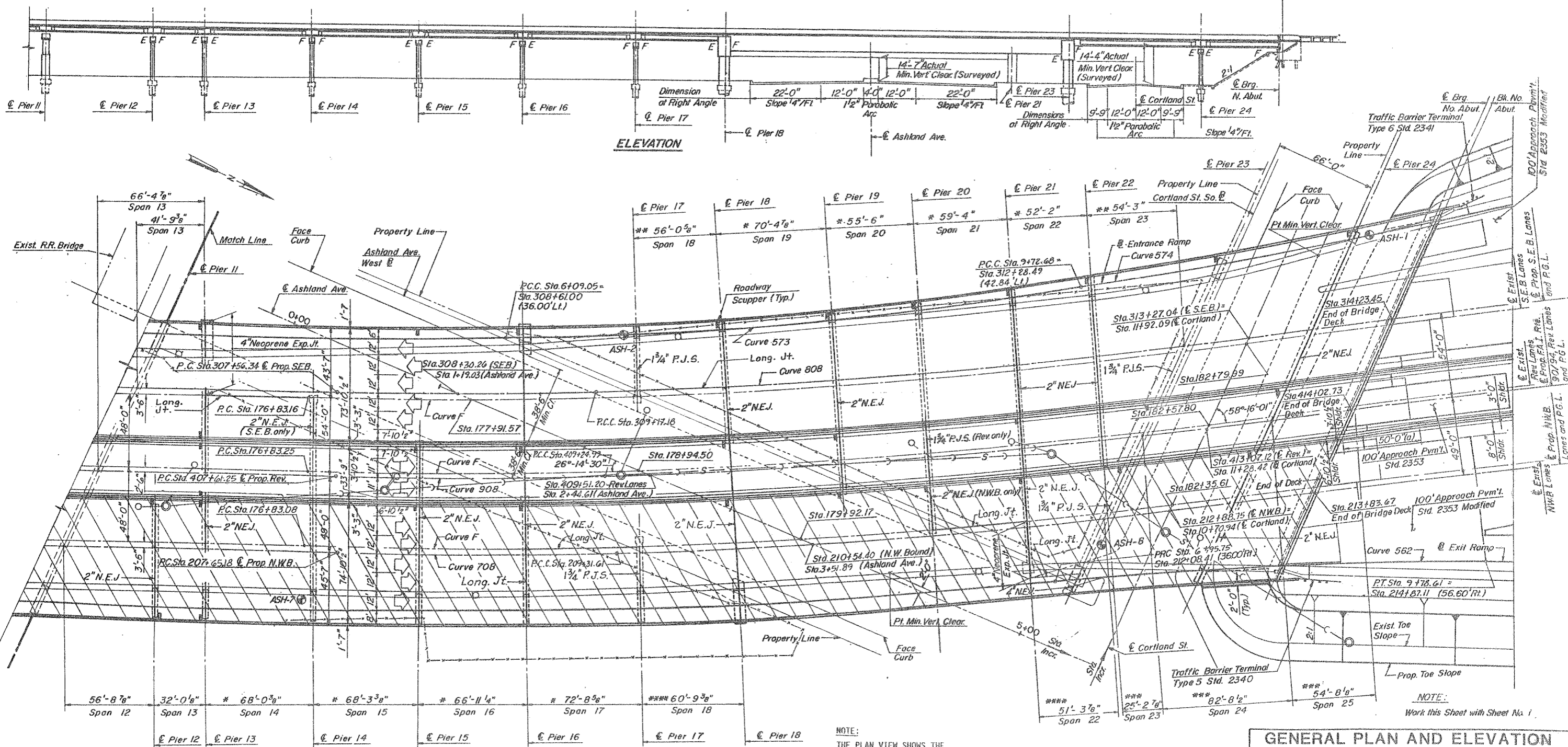


STRUCTURE NO. 016-0133

STANLEY CONSULTANTS
INCORPORATED
1111 N. WABASH AVE.
CHICAGO, ILL. 60602

STATE OF ILLINOIS
DEPARTMENT OF TRANSPORTATION

ROUTE NO.	SECTION	COUNTY	TOTAL SHEETS	SHEET NO.	SHEET NO. 4
F.A.I. 90/94	X	COOK	12	4	OF 12 SHEETS
FED. ROAD DIST. NO. 75 ILLINOIS					FED. AID PROJECT -
*D505.3-11-F-1					



* Measured at Rt. Angles to \ominus Substructure
 ** Measured along \ominus S.E. Bound Lanes
 *** Measured along \ominus Reversible Lanes
 **** Measured along \ominus N.W. Bound Lanes

PLAN

NOTE:
 THE PLAN VIEW SHOWS THE PROPOSED (FINAL) DEVELOPMENT OF THE BRIDGE. THIS CONTRACT COVERS N.W. LANE WORK ONLY.

(a) 50'-0" Transition Length for Shoulder Width (at Open Jt. between Rev. Lanes and N.W. Lanes only)

GENERAL PLAN AND ELEVATION
SHEET 2 OF 2

F.A.I. ROUTE 90/94 OVER ASHLAND AVENUE
 COOK COUNTY
 STATION 409+49

FOR FABRICATION ONLY

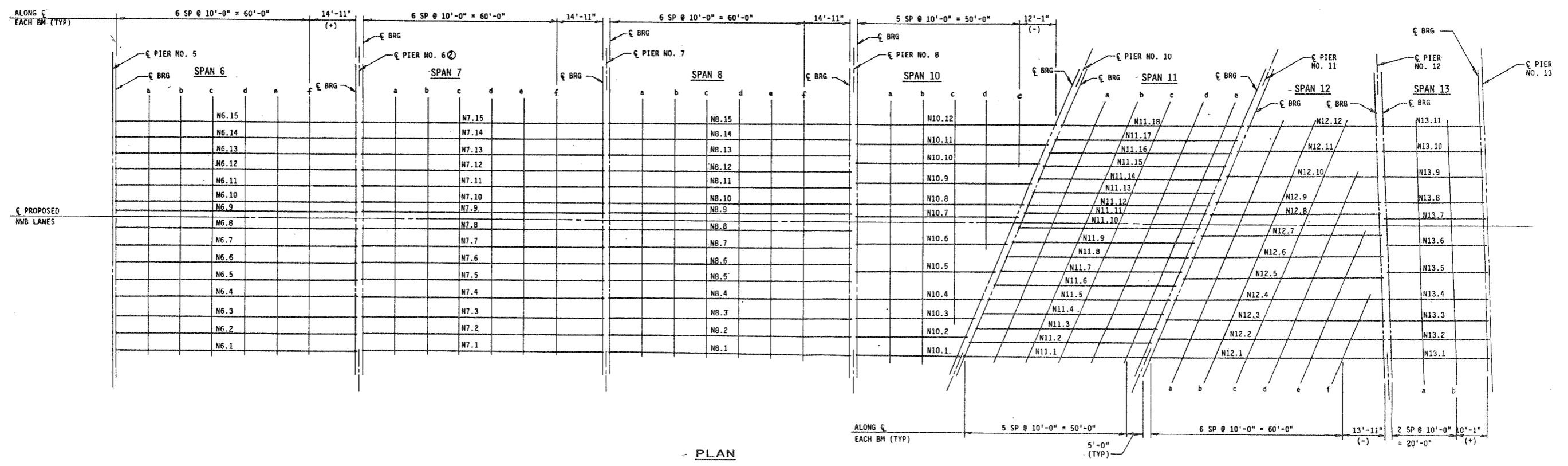
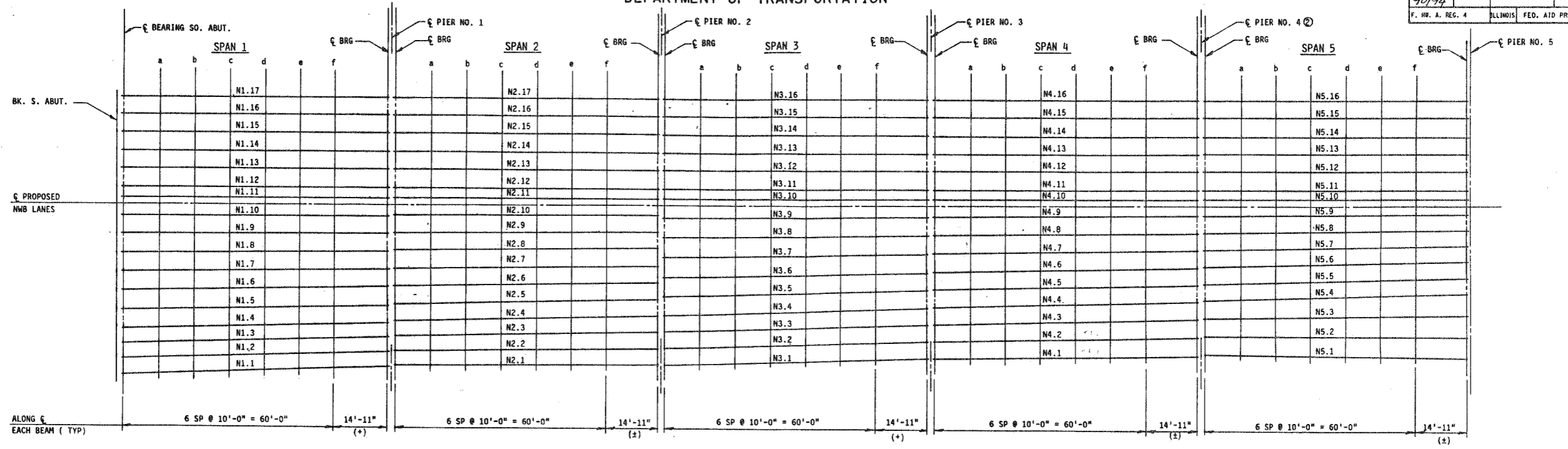
STANLEY CONSULTANTS

STATE OF ILLINOIS
DEPARTMENT OF TRANSPORTATION

*0505.3-H-F-1

ROUTE NO.	SEC	COUNTY	TOTAL SHEETS	SHEET NO.
FAI 90/94	X	COOK	12	5
F. HW. A. REG. 4		ILLINOIS FED. AID PROJECT		

SHEET NO. 5
12 SHEETS



- NOTES:
- Ⓜ INDICATES EXISTING DIAPHRAGM AT PIERS 4, 6, AND 14 TO BE REMOVED AND REPLACED WITH FIXED PIER DIAPHRAGM, SEE SHEET 42 FOR DETAILS.
 - Ⓜ INDICATES MISSING OR LOOSE BOLTS, NUTS, OR RIVETS. SEE "REHABILITATION NOTES" SHOWN ON SHEET 5.

STANLEY CONSULTANTS

FOR INFORMATION ONLY

TOP OF SLAB ELEVATIONS
SHEET 1 OF 2

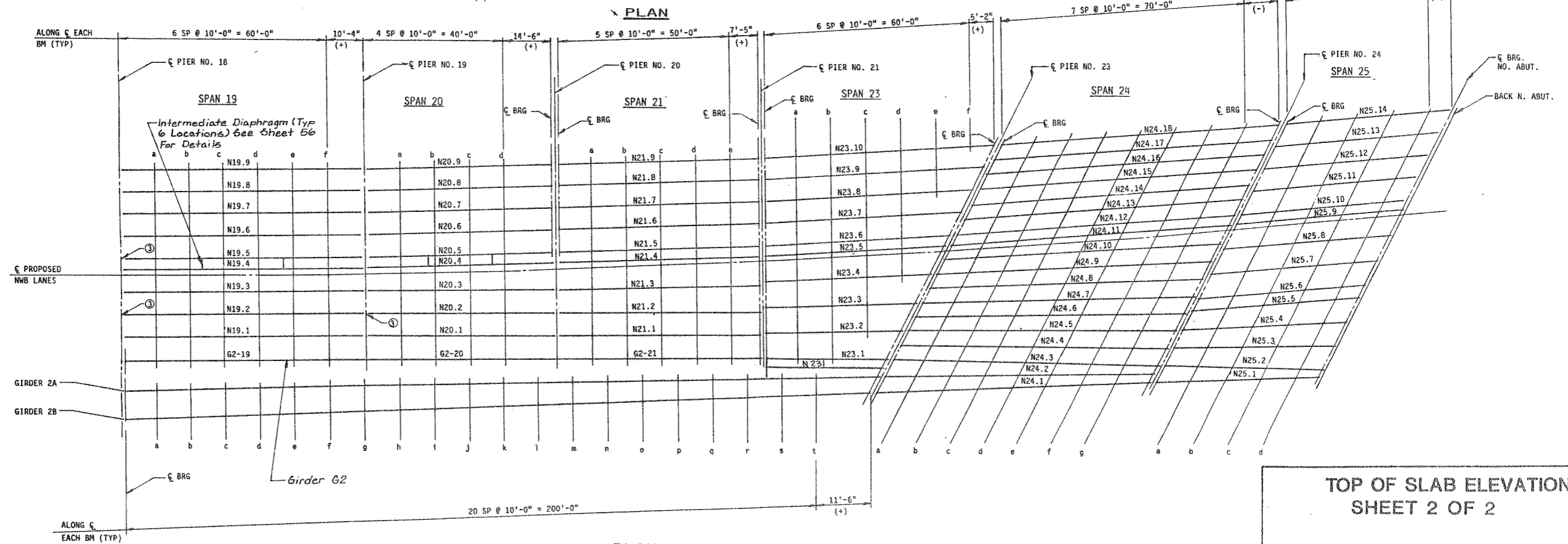
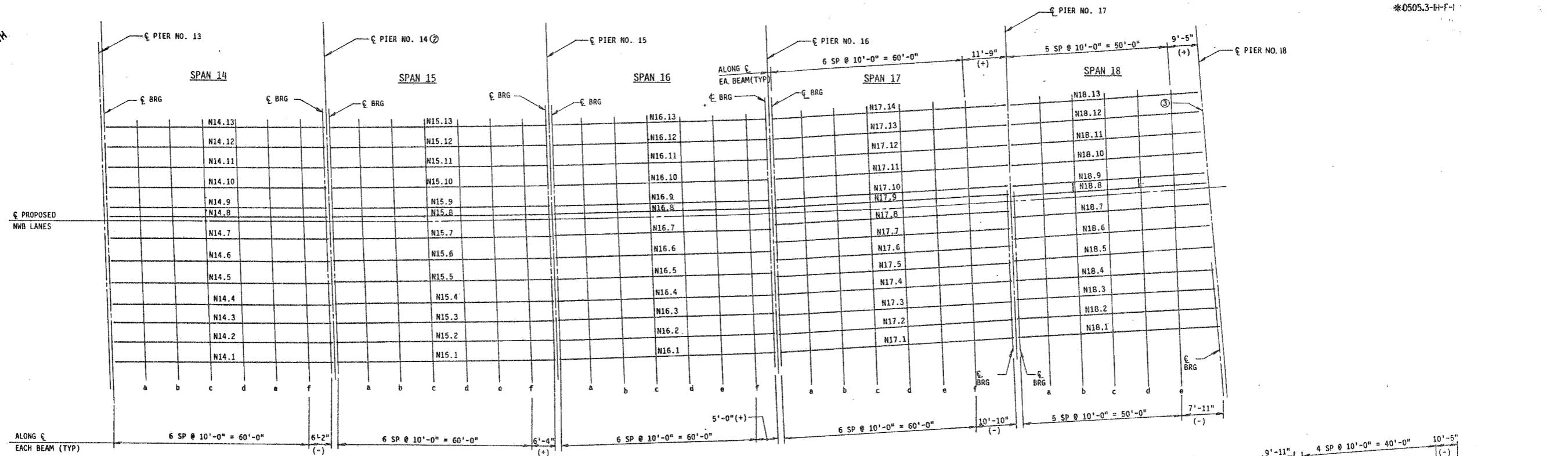
F.A.I. ROUTE 90/94 OVER ASHLAND AVENUE
COOK COUNTY
STATION 409+49

STATE OF ILLINOIS
DEPARTMENT OF TRANSPORTATION

ROUTE NO.	SEC	COUNTY	TOTAL SHEETS	SHEET NO.
FA1 90/94	X	COOK	12	6
F. W. A. REC. 4		ILLINOIS FED. AID PROJECT		

SHEET NO. 6
12 SHEETS

*0505.3-III-F-1



PLAN

TOP OF SLAB ELEVATIONS
SHEET 2 OF 2

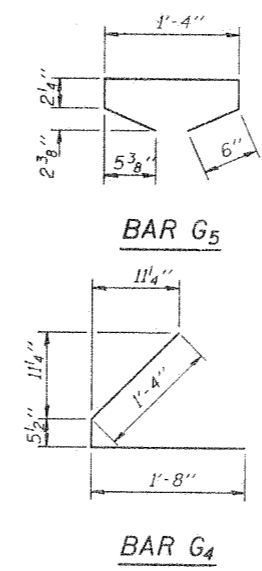
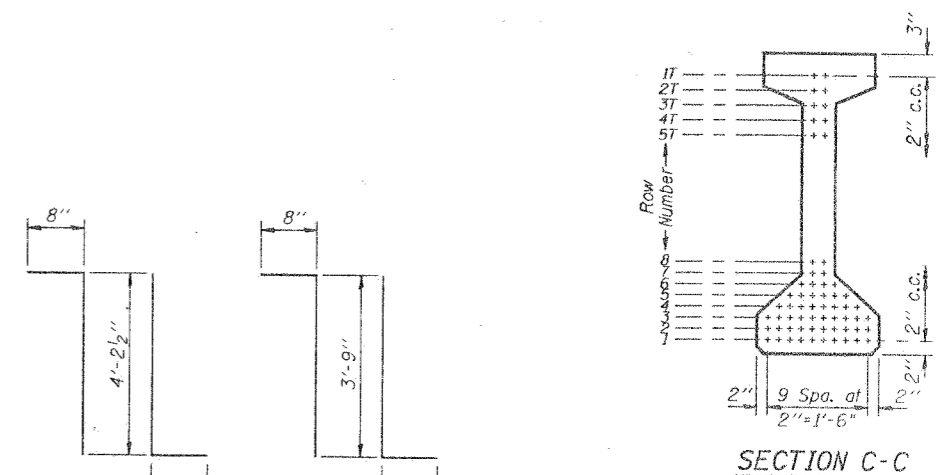
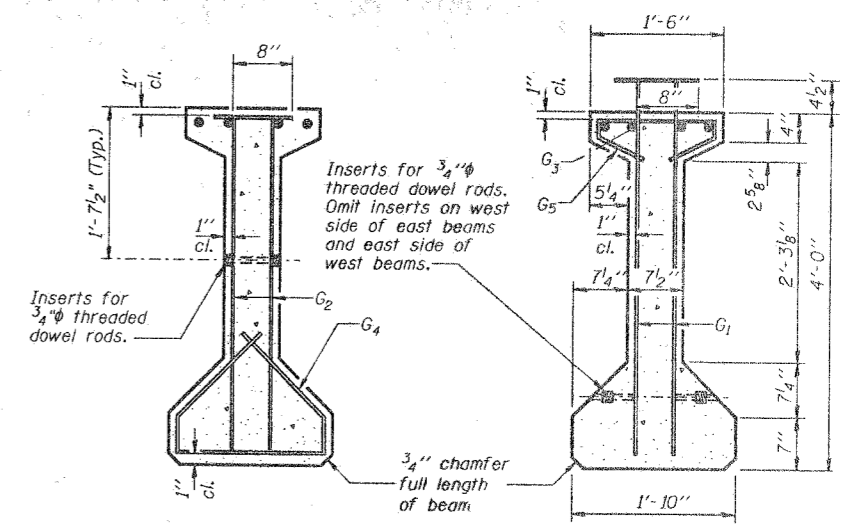
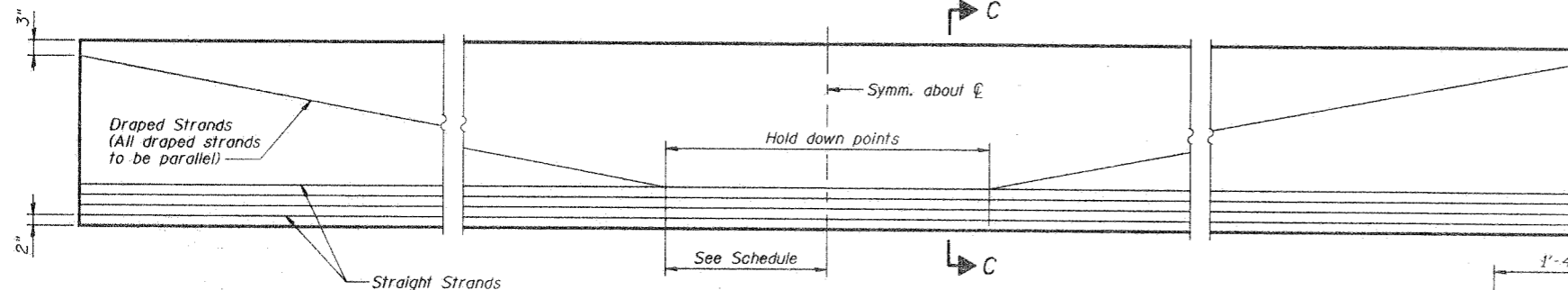
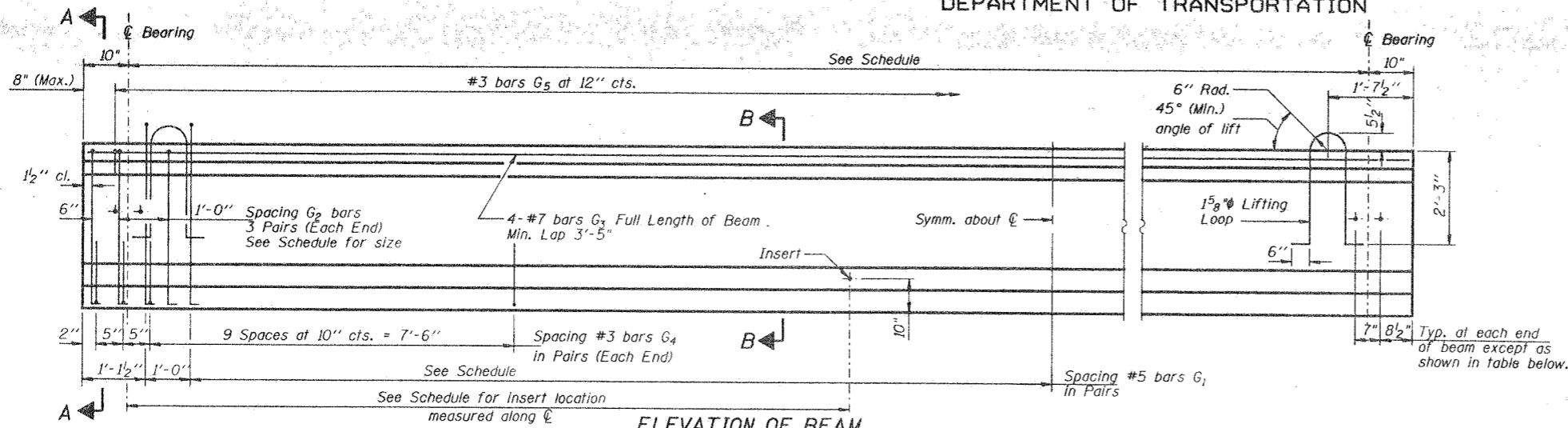
F.A.I. ROUTE 90/94 OVER ASHLAND AVENUE
COOK COUNTY
STATION 409+48

FOR INFORMATION ONLY

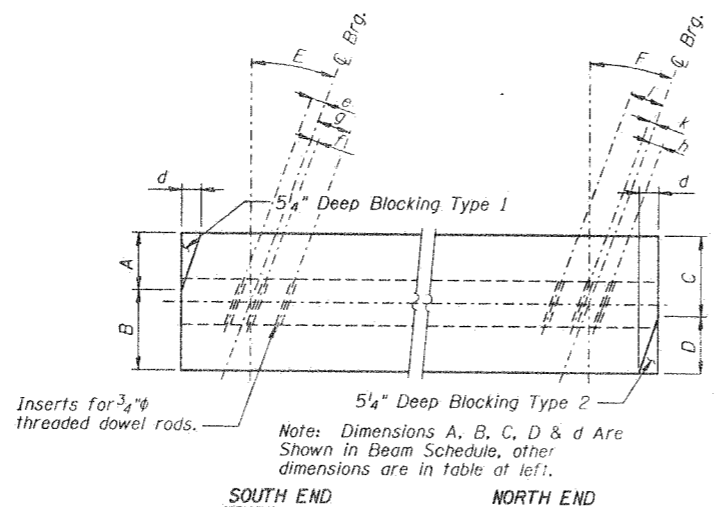
STANLEY CONSULTANTS
INCORPORATED
A PROFESSIONAL CORPORATION
1000 N. MICHIGAN AVENUE
CHICAGO, ILLINOIS 60611
TEL: (312) 344-4000
FAX: (312) 344-4001
WWW.STANLEYCONSULTANTS.COM

STATE OF ILLINOIS
DEPARTMENT OF TRANSPORTATION

ROUTE NO.	SECTION	COUNTY	TOTAL SHEETS	SHEET NO.	SHEET NO. 7 12 SHEETS
P.A. 90/94		COOK	12	7	
FURNISHING PRECAST PRESSED CONCRETE I-BEAMS, 48"		ILLINOIS FED. AID PROJECT -			
0505.3-IH-F-1					



Beam	INSERT LOCATION TABLE							
	South End				North End			
	E angle	a inch	f inch	g inch	F angle	h inch	k inch	l inch
N10.7	0°00'	1 1/2	-	5 1/2	22°57'	3/4	-	6 1/4
N10.8	0°00'	1 1/2	-	5 1/2	22°57'	3/4	-	6 1/4
N12.8	22°57'	3/4	-	6 1/4	1°51'	1 1/2	-	5 1/2
N12.9	22°57'	3/4	-	6 1/4	1°51'	1 1/2	-	5 1/2
N23.5	2°38'	1 1/2	-	5 1/2	31°05'	-	2	9
N23.6	2°38'	1 1/2	-	5 1/2	31°05'	-	2	9
N24.11	31°05'	-	3 1/4	10 1/4	31°05'	-	1	8
N24.12	31°05'	-	3 1/4	10 1/4	31°05'	-	1	8
N25.5	32°00'	-	1	8	32°00'	-	1	8
N25.6	32°00'	-	1	8	32°00'	-	1	8
N25.9	32°28'	-	1	8	32°28'	-	1	8
N25.10	32°28'	-	1	8	32°28'	-	1	8



Note: Work this sheet with beam schedule on sheet 8.

FOR FABRICATION ONLY

NOTES

All inserts and threaded dowel rods for inserts, reinforcing and Prestressing Steel, and other items which are cast into the Precast Concrete I-Beams shall be included in the contract unit price per lineal foot of "Furnishing Precast Prestressed Concrete I-Beams, 48 in."
Insert for 3/4" threaded dowel rods are to be two strut, coil type for I-Beam Web and single coil, flared loop type for I Beam Bottom Flange.
Prestressing steel shall be non-galvanized high strength, low relaxation 7-wire strand, Grade 270.
The nominal diameter shall be 1/2" and the nominal cross-sectional area shall be 0.153 sq. in.
Non-prestressing steel shall conform to AASHTO designation M-31, M-42 or M-53 Grade 60.
Steel for lifting loops shall be non-deformed bars fy=40,000 psi. Required release strength, f'ci, shall be 5,000 psi.

* BAR LIST

Bar	No.	Size	Length	Shape
G1	Δ	#5	5'-6 1/2"	L
G2	Δ	#7	4'-10"	L
G3	Δ	#7	#Δ	
G4	48	#3	3'-5 1/2"	L
G5	Δ	#3	2'-8 1/2"	L

* For one beam only.
Δ See Schedule.

BILL OF MATERIAL

Item	Unit	Total
Furnishing Precast Prestressed Concrete I-Beams, 48"	Lin. Ft.	2512

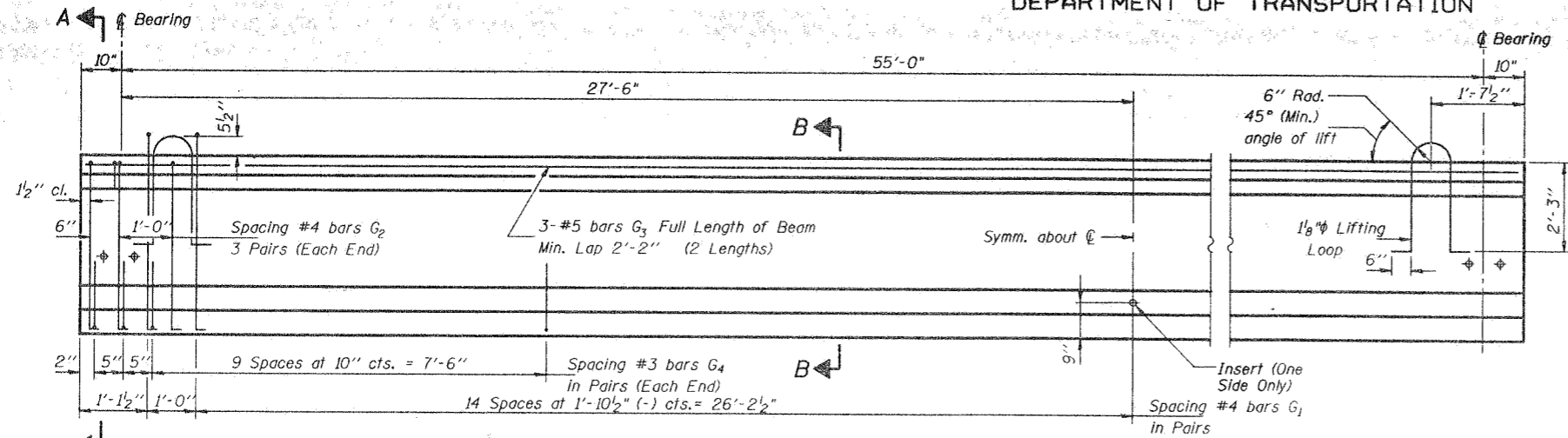
48" PRESTRESSED BEAM DETAILS

F.A.I. ROUTE 90 / 94 OVER ASHLAND AVENUE
COOK COUNTY
STATION 409+49

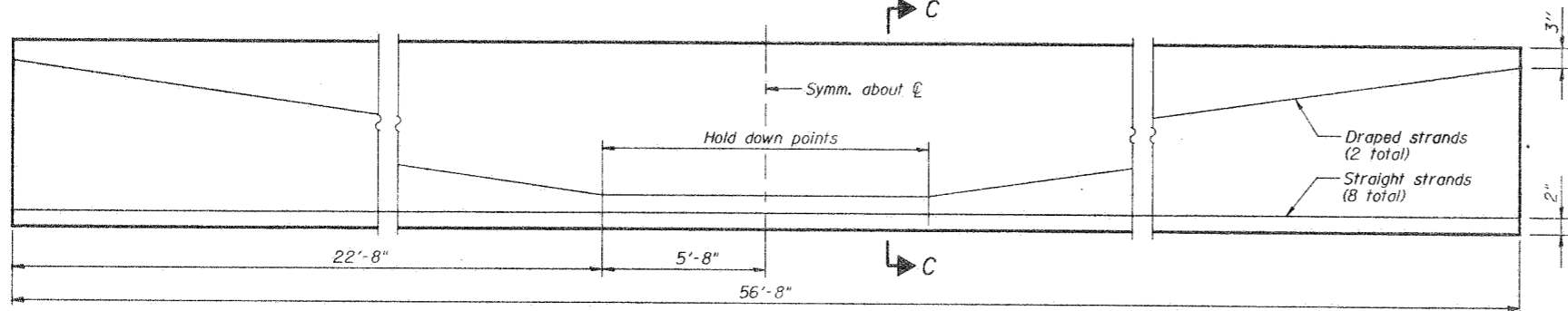
STATE OF ILLINOIS
DEPARTMENT OF TRANSPORTATION

ROUTE NO.	SECTION	COUNTY	DATE	SHEET
F.A. 90/94		COOK	1/2	9
FED. ROAD DIST. NO. 7		ILLINOIS	FED. AID PROJECT	
0505.3-1H-F-1				

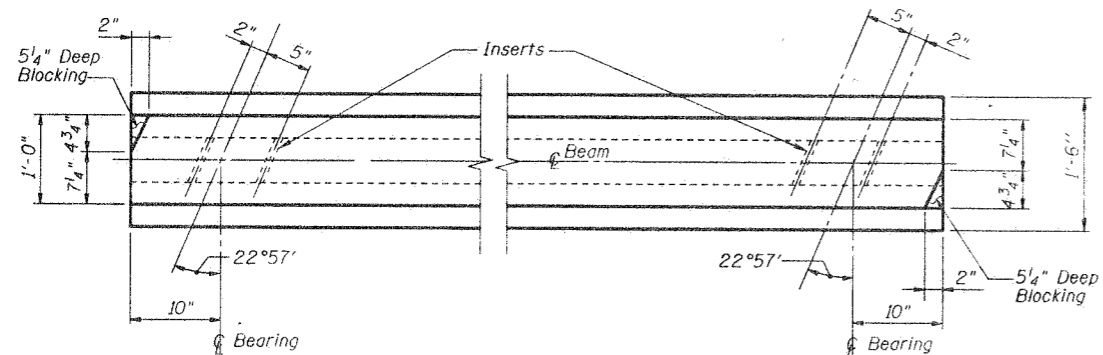
SHEET NO. 9
12 SHEETS



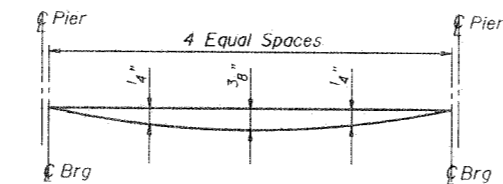
ELEVATION OF BEAMS N11.11 & N11.12
(Showing Reinforcement & Dimensions)



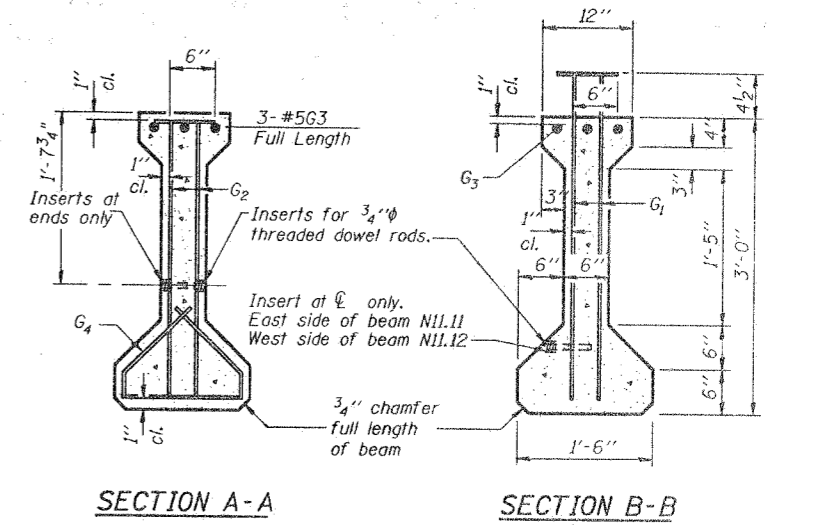
ELEVATION OF BEAMS N11.11 & N11.12
(Showing Prestressing Steel)



TOP PLAN AT ENDS OF BEAMS

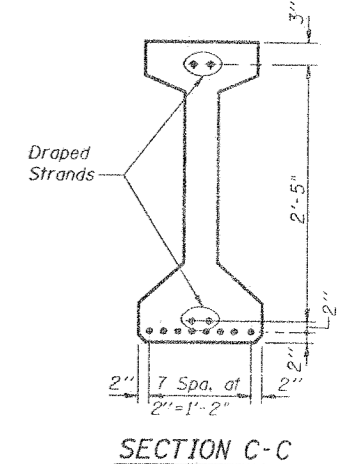


DEAD LOAD DEFLECTION DIAGRAM
(Includes weight of concrete only)

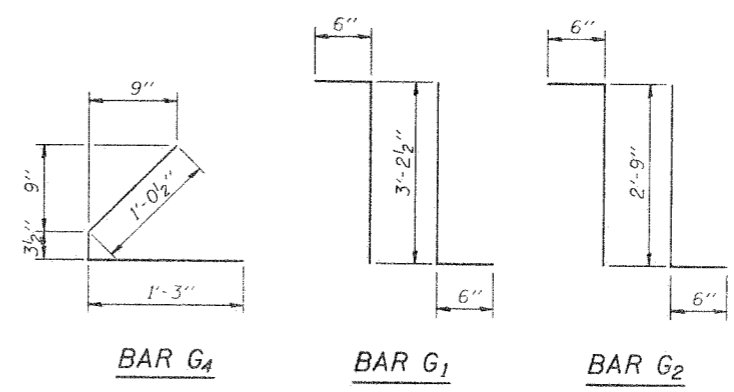


SECTION A-A

SECTION B-B



SECTION C-C



BAR G4

BAR G1

BAR G2

*** BAR LIST**

Bar	No.	Size	Length	Shape
G1	62	#4	4'-2 1/2"	TL
G2	12	#4	3'-9"	TL
G3	6	#5	29'-3"	---
G4	48	#3	2'-7"	L

* For one beam only.

FOR FABRICATION ONLY

NOTES

All inserts and threaded dowel rods for inserts, reinforcing and Prestressing Steel, and other items which are cast into the Precast Concrete I-Beams shall be included in the contract unit price per lineal foot of "Furnishing and Erecting Precast Prestressed Concrete I-Beams, 36 in."
Insert for 3/4" threaded dowel rods are to be two strut, coil type for I-Beam Webs and single coil, flared loop type for I-Beam Bottom Flanges.
Prestressing steel shall be non-galvanized high strength, low relaxation 7-wire strand, Grade 270.
The nominal diameter shall be 1/2" and the nominal cross-sectional area shall be 0.153 sq. in.
Non-prestressing steel shall conform to AASHTO designation M-31, M-42 or M-53 Grade 60.
Steel for lifting loops shall be non-deformed bars f'y=40,000 psi.
Required release strength, f'ci, shall be 5000 psi.
Details are for beams N11.11 and N11.12.

BILL OF MATERIAL

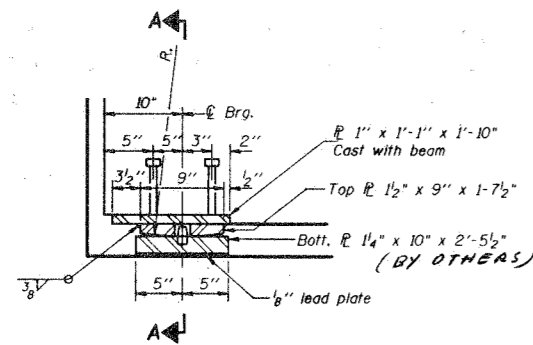
Item	Unit	Total
Furnishing Precast Prestressed Concrete I-Beams, 36"	Lin. Ft.	113

36" PRESTRESSED BEAM DETAILS

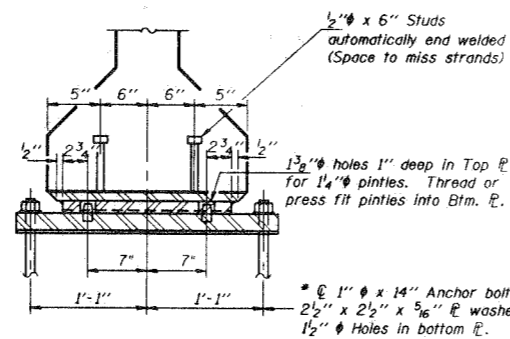
F.A.I. ROUTE 90 / 94 OVER ASHLAND AVENUE
COOK COUNTY
STATION 489+49

* 0505.3-B-F-1

STATE OF ILLINOIS
DEPARTMENT OF TRANSPORTATION

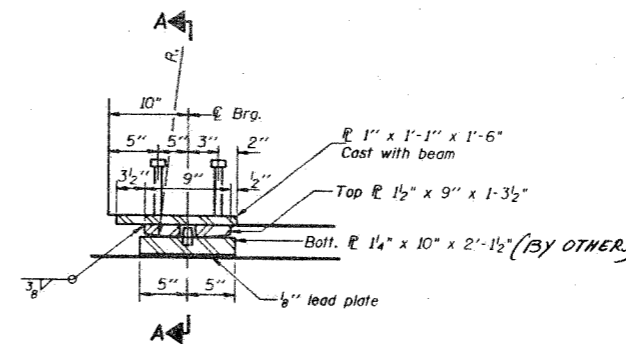


SECTION AT ABUT. OR PIER



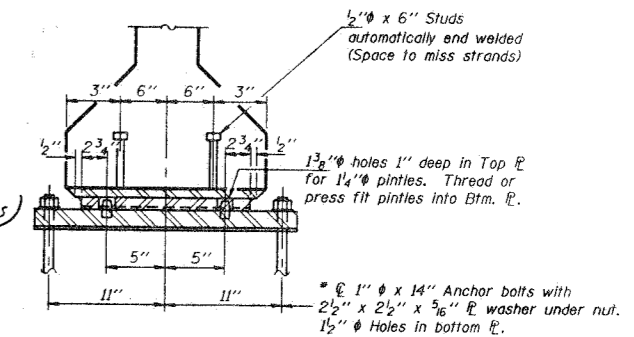
SECTION A-A

* Anchor Bolts Shall Be Drilled And Grouted In Place After Beams Have Been Erected. (By Others)
See sheet 12 of 12 for anchor bolt installation.



SECTION AT PIER #11

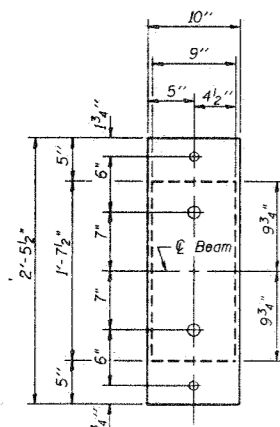
** **FIXED BEARING**
(Span 11 North End For 36" Prestressed Beams)
(2 Required)



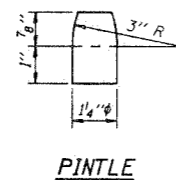
SECTION A-A

* Anchor Bolts Shall Be Drilled And Grouted In Place After Beams Have Been Erected. (By Others)
See sheet 12 of 12 for anchor bolt installation.

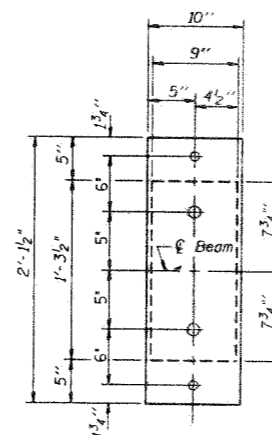
** **FIXED BEARING**
(See Beam Schedules, Sht 8 for location)
(38 Required)



PLAN OF
TOP & BOTTOM PLATES



PINTLE



PLAN OF
TOP & BOTTOM PLATES

** Cost of Embedded Plates, Top Plates, and Studs are incidental to cost of furnishing P.P.C. I-Beams.

BILL OF MATERIAL

Item	Unit	Total
Furnishing Structural Steel	Lump Sum	*

* Includes 7540 Lbs. BY OTHERS

FOR FABRICATION ONLY

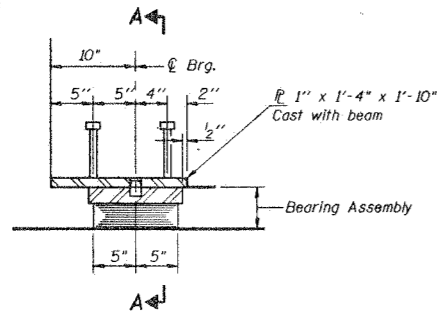
BEARING DETAILS

F.A.I. ROUTE 90 / 94 OVER ASHLAND AVENUE
COOK COUNTY
STATION 409+49

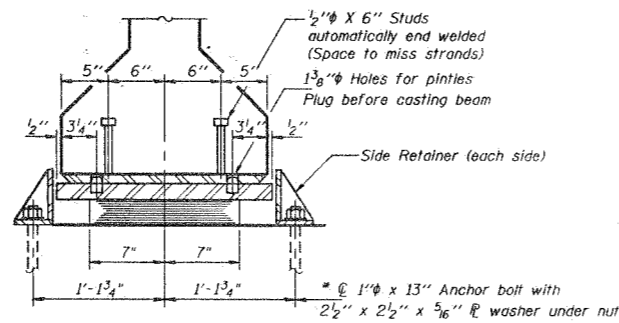
STATE OF ILLINOIS
DEPARTMENT OF TRANSPORTATION

ROUTE NO.	SEC.	COUNTY	TOTAL SHEETS	SHEET NO.	SHEET NO. 11
F.A.I. 98/94	*	COOK	12	11	12 SHEETS
ILLINOIS					

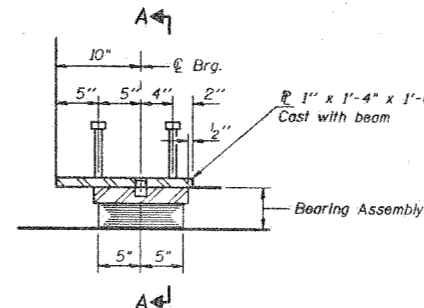
* 0505.3-H-F-1



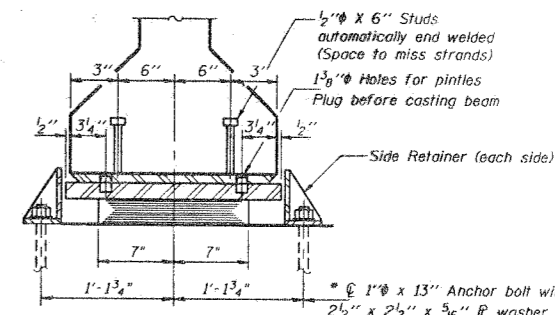
SECTION AT PIERS



SECTION A-A



SECTION AT PIER 10



SECTION A-A

TYPE I ELASTOMERIC EXP. BRG.

(Size 10-a, 10-b, see Beam Schedules Sht 8 For location)

* Notes: After beams have been erected holes at expansion bearings shall be drilled and anchor bolts grouted in place. (By Others)

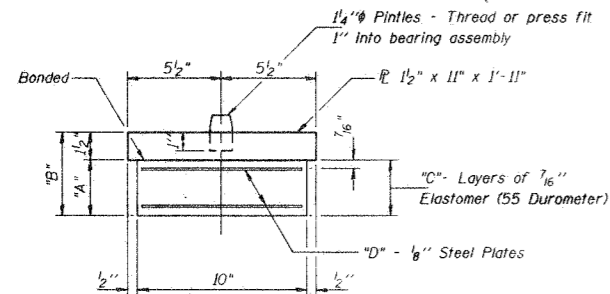
See sheet 12 of 12 for anchor bolt details.

TYPE I ELASTOMERIC EXP. BRG.

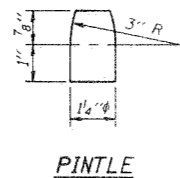
(Size 10-a; Span 11 South End For 36" Prestressed Beams) (2 Required)

* Note: After beams have been erected holes at expansion bearings shall be drilled and anchor bolts grouted in place. (By Others)

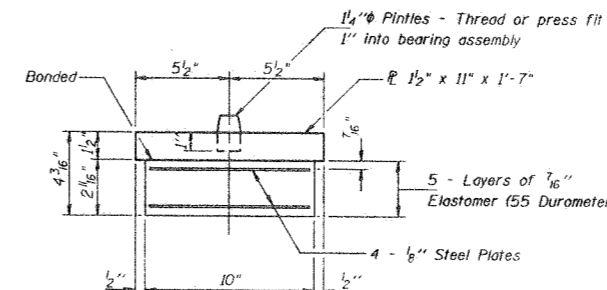
See sheet 12 of 12 for anchor bolt detail.



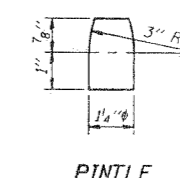
BEARING ASSEMBLY



PINTLE



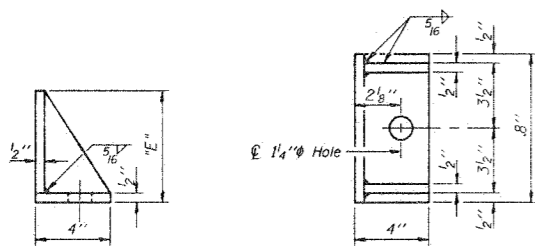
BEARING ASSEMBLY



PINTLE

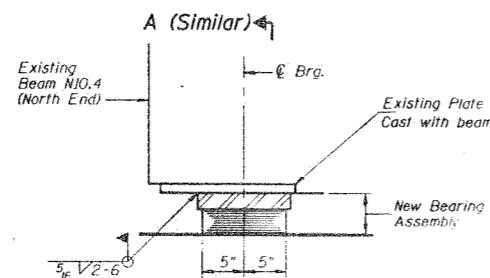
BILL OF MATERIAL

Bearing Size	A	B	C	D	E	No. Req'd
10-a	2 1/16"	4 3/16"	5	4	5"	24
10-b	3 1/4"	4 3/4"	6	5	5 1/4"	15



SIDE RETAINER (BY OTHERS)

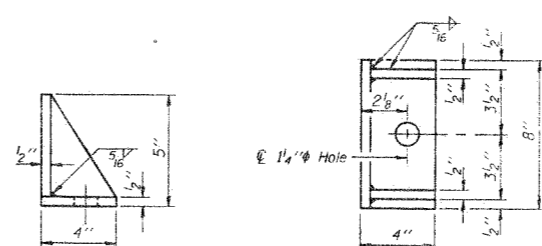
Equivalent rolled angle with stiffeners will be allowed in lieu of welded plates. (78 Required)



SECTION AT PIER 10

TYPE I ELASTOMERIC EXP. BRG. MODIFIED

(Size 10-a, For Beam N10.4)



SIDE RETAINER (BY OTHERS)

Equivalent rolled angle with stiffeners will be allowed in lieu of welded plates. (4 Required)

BILL OF MATERIAL

Item	Unit	Total
Furnish Elastomeric Bearing Assembly, Type I	Each	41
Furnishing Structural Steel	Linear Feet	100

(Furnishing Structural Steel Includes Side Retainers and Anchor Bolts.) * Includes 1350 Lbs. BY OTHERS

FOR FABRICATION ONLY

BEARING DETAILS

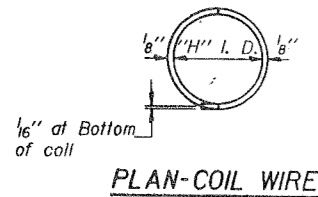
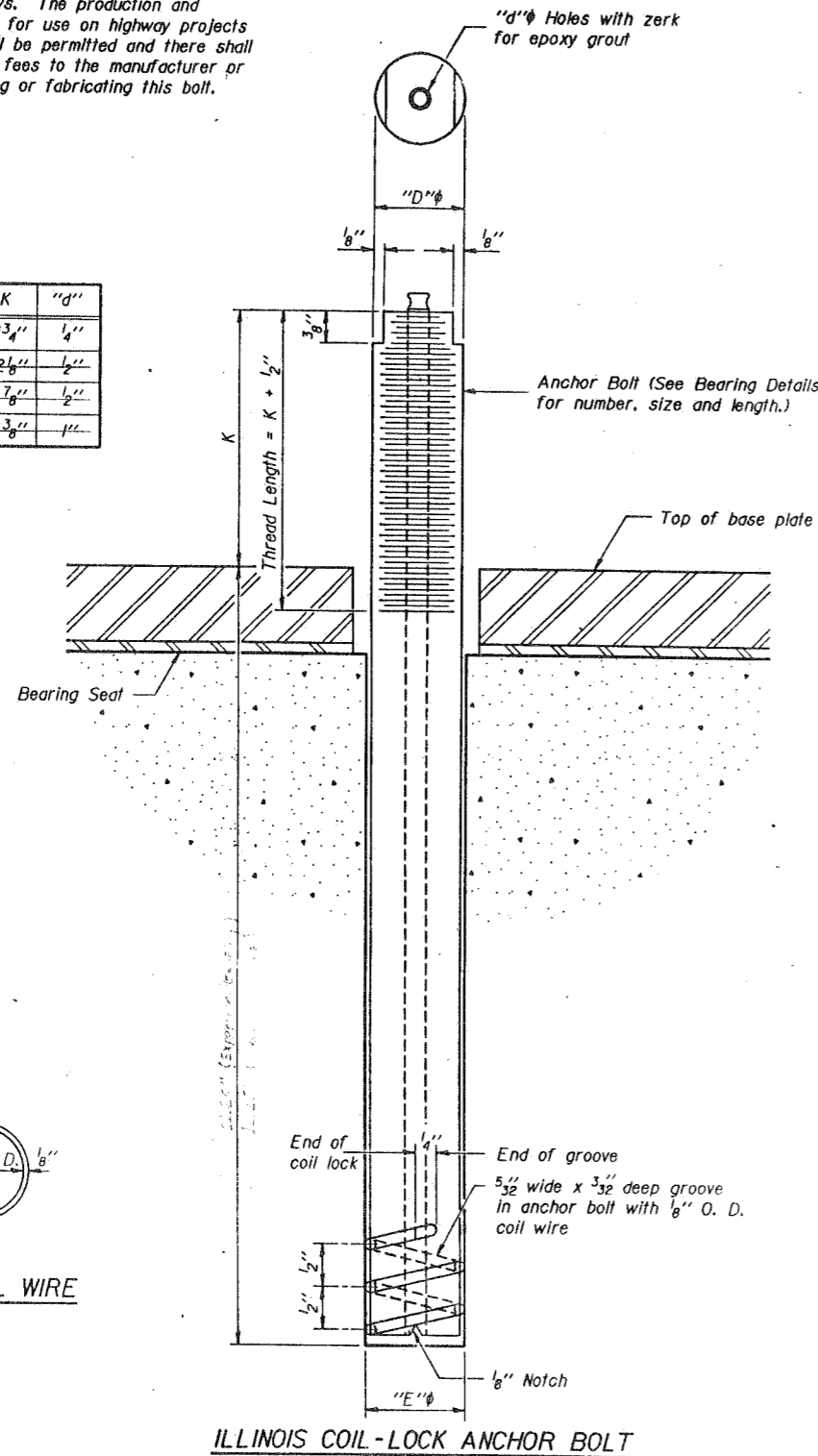
F.A.I. ROUTE 90 / 94 OVER ASHLAND AVENUE
COOK COUNTY
STATION 409+49

STATE OF ILLINOIS
DEPARTMENT OF TRANSPORTATION

ROUTE NO.	SECTION	COUNTY	SHEET NO.	SHEET NO.
F.A.I. 90/94	X	COOK	12	12
* 0505.3-B1-F-1				

The Illinois Coil-Lock Anchor Bolt is a proprietary item which is the property of the Illinois Department of Transportation. Use, reproduction or disclosure without express written permission is prohibited and protected under Federal copyright laws. The production and the fabrication of this bolt for use on highway projects in the State of Illinois shall be permitted and there shall be no incurred charges or fees to the manufacturer or the fabricator for producing or fabricating this bolt.

D	E	H	K	"d"
1"	1 1/8"	1 3/16"	1 3/4"	1/4"
1 1/2"	1 5/8"	1 5/16"	2 1/8"	1/2"
2"	2 1/8"	1 9/16"	2 7/8"	1/2"
2 1/2"	2 5/8"	2 5/16"	3 3/8"	1"



MATERIALS FOR ILLINOIS COIL-LOCK ANCHOR BOLT

The anchor bolt shall be fabricated from cold drawn or hot finished seamless carbon steel mechanical tubing conforming to ASTM A519, Grade 1026 and supplied with hexagonal nuts and cut washers.

The coil wire shall be made of any suitable soft steel wire. The finished anchor bolt shall be cleaned of rust and other foreign materials and wrapped or packaged to prevent contamination until they are installed. The epoxy grout shall be a two-component, epoxy resin bonding system conforming to ASTM C881, Type I, Grade 1 and of a Class suitable for the temperature at installation.

INSTALLATION PROCEDURE for the ILLINOIS COIL-LOCK ANCHOR BOLT

1. With the coil wire in place, the bolt shall be inserted into the hole and turned clockwise to a snug fit in the hole. Nut and washer shall be placed on the bolt. The nut shall be tensioned until the steel base plates are held securely to the concrete bearing seat.
2. Epoxy grout shall be pumped through the zerk fitting with a pressure gun. Pumping shall continue until the epoxy overflows the hole around the bolt shank. After pumping is discontinued, excess epoxy shall be immediately wiped off.

ALTERNATE ANCHOR BOLTS

The Contractor may use, at his option, the capsule or the adhesive cartridge type anchor rods that have been previously tested and given a prior approval by the Department. The Contractor shall install these anchor rods in pre-drilled holes in accordance with the manufacturer's recommendations and procedures.

The capsule or the adhesive cartridge type anchor rods shall be a two part system composed of:

1. A threaded rod stud with nut and washer conforming to ASTM A307.
2. A sealed glass capsule or a sealed glass adhesive cartridge containing premeasured amounts of the adhesive chemical.

GENERAL NOTES

The anchor bolts, furnished including the epoxy grout or capsules shall not be paid for separately but shall be included in the unit bid price for "Furnishing Structural Steel". (BY OTHERS)

FOR FABRICATION ONLY
FOR INFORMATION ONLY

ANCHOR BOLT DETAILS

SECTION
F.A.I. ROUTE 90/94 OVER ASHLAND AVENUE
COOK COUNTY
STATION 409+49