

ROUTE	SECTION	COUNTY	TOTAL SHEETS	SHEET NUMBER
VARIOUS	2008-053 BP	VARIOUS	54 - 1 = 53	1

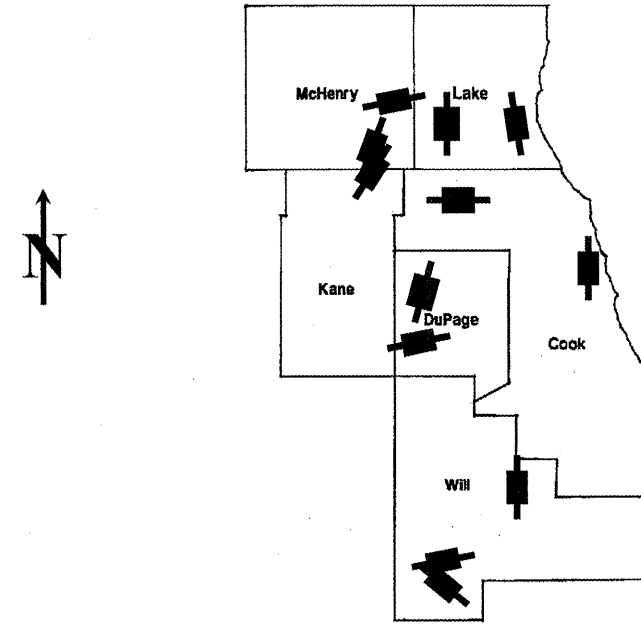
FOR INDEX OF SHEETS SEE SHEET 2

CONTRACT NO. 60F04
D-91-566-08

STATE OF ILLINOIS
DEPARTMENT OF TRANSPORTATION
DIVISION OF HIGHWAYS
DISTRICT ONE
PROPOSED HIGHWAY PLANS

IMPROVEMENTS ARE LOCATED IN THE VILLAGES OF ALGONQUIN AND NEW LENOX, THE CITIES OF CHICAGO, NORTH CHICAGO, WEST CHICAGO, AND WILMINGTON, AND MCHENRY, WAUCONDA, NAPERVILLE, HANOVER, AND CUSTER TOWNSHIPS

VARIOUS ROUTES
VARIOUS LOCATIONS
SECTION 2008-053 BP
BRIDGE PAINTING
VARIOUS COUNTIES
C-91-566-08



LOCATION OF IMPROVEMENT INDICATED THUS:

- LOCATION 1) SN 056-0015
- LOCATION 2) SN 056-0016
- LOCATION 3) SN 056-0049
- LOCATION 4) SN 049-0012
- LOCATION 5) SN 049-0022, -0023
- LOCATION 6) SN 022-0022
- LOCATION 7) SN 022-0038
- LOCATION 8) SN 016-0133
- LOCATION 9) SN 016-0948
- LOCATION 10) SN 099-0091
- LOCATION 11) SN 099-0171
- LOCATION 12) SN 099-0203

STATE OF ILLINOIS
DEPARTMENT OF TRANSPORTATION
DIVISION OF HIGHWAYS
SUBMITTED: FEBRUARY 13, 2009
Diana M. O'Keefe
DEPUTY DIRECTOR OF HIGHWAYS, REGION ENGINEER
March 27, 2009
Charles J. Ingersoll
ENGINEER OF DESIGN AND ENVIRONMENT
March 27, 2009
Christine M. Reed
DIRECTOR OF HIGHWAYS, CHIEF ENGINEER

PRINTED BY THE AUTHORITY
OF THE STATE OF ILLINOIS

J.U.L.I.E.: JOINT UTILITY LOCATION
INFORMATION FOR EXCAVATION
(800) 892-0123 OR 811

C.U.A.N.: CHICAGO UTILITY ALERT
NETWORK (312) 744-7000

PROJECT ENGINEER ROBERT BORO (847) 705-4178
PROJECT MANAGER KEN ENG

CONTRACT NO. 60F04

ROUTE	SECTION	COUNTY	TOTAL SHEETS	SHEET NUMBER
VARIOUS	2008-053 BP	VARIOUS	54	2

Contract 60F04

INDEX OF SHEETS

STATE STANDARDS

- 1 TITLE SHEET
- 2 INDEX OF SHEETS, STATE STANDARDS
- 3 GENERAL NOTES
- 4-5 GENERAL PAINT NOTES
- 6 SUMMARY OF QUANTITIES
- 7-17 LOCATION MAPS
- ~~18~~ *DELETED*
- 19 EXISTING BRIDGE PLANS (SN 056-0015: LOCATION 1)
- 20-21 EXISTING BRIDGE PLANS (SN 056-0016: LOCATION 2)
- 22-24 EXISTING BRIDGE PLANS (SN 056-0049: LOCATION 3)
- 25-26 EXISTING BRIDGE PLANS (SN 049-0012: LOCATION 4)
- 27-29 EXISTING BRIDGE PLANS (SN 049-0022, -0023: LOCATION 5)
- 30-32 EXISTING BRIDGE PLANS (SN 022-0022: LOCATION 6)
- 33-37 EXISTING BRIDGE PLANS (SN 022-0038: LOCATION 7)
- 38-41 EXISTING BRIDGE PLANS (SN 016-0133: LOCATION 8)
- 42-44 EXISTING BRIDGE PLANS (SN 016-0948: LOCATION 9)
- 45-46 EXISTING BRIDGE PLANS (SN 099-0091: LOCATION 10)
- 47-48 EXISTING BRIDGE PLANS (SN 099-0171: LOCATION 11)
- 49-50 EXISTING BRIDGE PLANS (SN 099-0203: LOCATION 12)
- 51 TRAFFIC CONTROL DETAILS FOR FREEWAY SINGLE & MULTI-LANE
WEAVE (TC-09)
- 52 TRAFFIC CONTROL AND PROTECTION FOR SIDE ROADS,
INTERSECTIONS AND DRIVEWAYS (TC-10)
- 53 TRAFFIC CONTROL AND PROTECTION AT TURN BAYS (TO REMAIN
OPEN TO TRAFFIC) (TC-14)
- 54 TRAFFIC CONTROL DETAILS FOR FREEWAY SHOUDLER CLOSURES
AND PARTIAL RAMP CLOSURES (TC-17)

- 701006-03 2L, 2W, OFF-ROAD OPERATION, 15' to 24" FROM PAVEMENT EDGE
- 701101-02 MULTILANE, OFF-ROAD OPERATIONS, 15' TO 24" FROM PAVEMENT EDGE
- 701106-02 MULTILANE, OFF-ROAD OPERATIONS, MORE THAN 15' FROM PAVEMENT EDGE
- 701301-03 2L, 2W, LANE CLOSURE, SHORT TIME OPERATIONS
- 701400-03 FREEWAY/EXPRESSWAY, APPROACH TO LANE CLOSURE
- 701401-05 FREEWAY/EXPRESSWAY, LANE CLOSURE
- 701411-05 MULTILANE, LANE CLOSURE, AT ENTRANCE OR EXIT RAMP FOR SPEEDS ≥ 45 MPH
- 701426-03 MULTILANE, LANE CLOSURE, INTERMITTENT OR MOVING OPERATION FOR
SPEEDS ≥ 45 MPH
- 701446-01 FREEWAY/EXPRESSWAY, TWO LANE CLOSURE
- 701601-03 MULTILANE, LANE CLOSURE, 1W OR 2W, WITH NONTRAVERSABLE MEDIAN
- 701606-06 MULTILANE, URBAN LANE CLOSURE, 2W WITH MOUNTABLE MEDIAN
- 701801-04 MULTILANE, LANE CLOSURE, 1W OR 2W CROSSWALK OR SIDEWALK CLOSURE
- 701901-01 TRAFFIC CONTROL DEVICES

ILLINOIS DEPARTMENT OF TRANSPORTATION

INDEX OF SHEETS
STATE STANDARDS

Rev.

ROUTE	SECTION	COUNTY	TOTAL SHEETS	SHEET NUMBER
VARIOUS	2008-053 BP	VARIOUS	54	3

CONTRACT NO. 60F04

GENERAL NOTES

BEFORE STARTING ANY EXCAVATION, THE CONTRACTOR SHALL CALL "J.U.L.I.E." AT (800) 892-0123 OR 811 FOR FIELD LOCATIONS OF BURIED ELECTRIC, TELEPHONE AND GAS UTILITIES. 48 HOUR NOTIFICATION IS REQUIRED.

BEFORE STARTING ANY EXCAVATION IN THE CITY OF CHICAGO, THE CONTRACTOR SHALL CALL "C.U.A.N." AT (312) 744-7000 OR FOR FIELD LOCATIONS OF BURIED ELECTRIC, TELEPHONE AND GAS UTILITIES. 48 HOUR NOTIFICATION IS REQUIRED.

THE CONTRACTOR SHALL COORDINATE CONSTRUCTION ACTIVITIES WITH UTILITY COMPANIES, THE CITIES OF CHICAGO, NORTH CHICAGO, WEST CHICAGO, AND THE VILLAGES OF ALGONQUIN AND NEW LENOX.

WHEN ARTIFICIAL LIGHTING IS UTILIZED IN NIGHT OPERATIONS, THE CONTRACTOR SHALL EXERCISE THE UTMOST PRECAUTIONS IN PREVENTING ADVERSE VISIBILITY TO THE MOTORING PUBLIC AND ADJOINING RESIDENTIAL AREAS.

IT SHALL BE THE CONTRACTOR'S RESPONSIBILITY TO VERIFY ALL DIMENSIONS & CONDITIONS EXISTING IN THE FIELD PRIOR TO CONSTRUCTION & ORDERING OF MATERIALS.

THE CONTRACTOR WILL NOT BE ALLOWED TO SET UP A YARD OR FIELD OFFICE ON STATE PROPERTY WITHOUT WRITTEN PERMISSION FROM THE DEPARTMENT.

THE CONTRACTOR SHALL CONTACT THE DISTRICT ONE TRAFFIC CONTROL SUPERVISOR AT (847) 705-4470 (FOR ARTERIALS) OR (847)705-4151 (FOR EXPRESSWAYS). A MINIMUM OF 72 HOURS IN ADVANCE OF BEGINNING WORK.

THE CONTRACTOR SHALL BE REQUIRED TO PROVIDE ACCESS TO ABUTTING PROPERTY AT ALL TIMES DURING THE CONSTRUCTION OF THIS PROJECT.

DO NOT SCALE PLANS FOR CONSTRUCTION DIMENSIONS.

THE "ADVANCED WARNING SIGN DETAIL FOR ARTERIAL TRAFFIC" LOCATED IN THE SPECIAL PROVISION FOR "TEMPORARY INFORMATION SIGNING FOR LANE CLOSURES" IS APPLICABLE ONLY TO ARTERIAL ROADS AND SHALL NOT BE APPLIED TO EXPRESSWAYS.

IT SHALL BE THE CONTRACTOR'S RESPONSIBILITY TO PROTECT AND PRESERVE THE EXISTING BRIDGE LIGHTING AT ANY LOCATIONS THAT LIGHTING IS ENCOUNTERED ADJACENT TO AN AREA TO BE CLEANED AND PAINTED.

ILLINOIS DEPARTMENT OF TRANSPORTATION

GENERAL NOTES

ROUTE	SECTION	COUNTY	TOTAL SHEETS	SHEET NUMBER
VARIOUS	2008-051 BP	VARIOUS	54	4

GENERAL NOTES FOR PAINT

CLEANING AND PAINTING OF THE EXISTING STRUCTURAL STEEL SHALL BE AS SPECIFIED IN THE SPECIAL PROVISION FOR "CLEANING AND PAINTING EXISTING STEEL STRUCTURES".

A MINIMUM OF FOUR (4) AIR MONITORS WILL BE REQUIRED TO MONITOR ABRASIVE BLASTING OPERATIONS PER LOCATIONS 3 (SN 056-0049), 4 (SN 049-0012), 6 (SN 022-0022), 8 (SN 016-0133), AND TWO (2) AIR MONITORS PER LOCATIONS 5 (SN 049-0022,-0023), 7 (SN 022-0038), 9 (SN 016-0948), 10 (SN 099-0091), 11 (SN 099-0171), AND 12 (SN 099-0203). SEE SPECIAL PROVISION FOR "CONTAINMENT AND DISPOSAL OF LEAD PAINT CLEANING RESIDUE."

AT LOCATIONS 1 (SN 056-0015) AND 2 (SN 056-0016) CONTAINMENT OF CLEANING RESIDUE IS REQUIRED TO CONTROL NUISANCE DUST. SEE SPECIAL PROVISION FOR "CONTAINMENT AND DISPOSAL OF NON-LEAD PAINT CLEANING RESIDUES".

THE SSPC-QP1 AND SSPC-QP2 PAINTING CONTRACTOR CERTIFICATIONS WILL BE REQUIRED FOR THESE BRIDGES.

THE AREAS DESIGNATED TO BE CLEANED PER NEAR WHITE BLAST CLEANING SSPC-SP10 SHALL BE PAINTED ACCORDING TO THE REQUIREMENTS OF PAINT SYSTEM 1-OZ/E/U. LOCATIONS 1(SN 056-0015) & 10(SN 099-0091): THE COLOR OF THE FINAL FINISH COAT FOR ALL STEEL SURFACES SHALL MATCH THE FEDERAL COLOR STANDARD 595a 20045. ALL OTHER LOCATIONS: THE COLOR OF THE FINAL FINISH COAT FOR ALL INTERIOR STEEL SURFACES,

SHALL BE GRAY, MUNSELL NO 5B 7/1. THE COLOR OF THE FINAL FINISH COAT FOR THE EXTERIOR AND BOTTOM FLANGE OF THE FASCIA BEAMS SHALL BE REDDISH BROWN, MUNSELL NO 2.5YR 3/4.

ALL ITEMS (SUCH AS, BUT NOT LIMITED TO; CONDUITS, BRACKETS AND DECK DRAINS) ATTACHED TO THE OUTSIDE OF THE FASCIA BEAMS SHOULD BE CLEANED AND PAINTED.

LOCATIONS 2(SN 056-0016), 3(SN 056-0049), 4(SN 049-0012), 5(SN 049-0022,-0023), 6(SN 022-0022), 9(SN 016-0984), 11(SN 099-0171) AND 12(SN 099-0203)

ALL BEAMS, BEARINGS AND OTHER STRUCTURAL STEEL WITHIN FIVE (5) FT., (MEASURED ALONG THE BEAM) OF EITHER SIDE OF THE DECK JOINTS, SHALL BE CLEANED PER NEAR WHITE BLAST CLEANING SSPC-SP10. THE EXTERIOR SURFACES AND TOP AND BOTTOM OF THE BOTTOM FLANGE OF THE FASCIA BEAMS (SEE FIGURE 1) SHALL BE CLEANED PER NEAR WHITE BLAST CLEANING SSPC-SP10.

LOCATION 7 (SN 022-0038)

ALL BEAMS, BEARINGS AND OTHER STRUCTURAL STEEL WITHIN FIVE (5) FT., (MEASURED ALONG THE BEAM) OF EITHER SIDE OF THE DECK JOINTS, SHALL BE CLEANED PER NEAR WHITE BLAST CLEANING SSPC-SP10. THE TOP AND BOTTOM OF THE BOTTOM FLANGE OF ALL BEAMS SHALL BE CLEANED PER NEAR WHITE BLAST CLEANING SSPC-SP10.

LOCATIONS 1(SN 056-0015) AND 10(SN 099-0091)

ALL BEARINGS AND OTHER STRUCTURAL STEEL WITHIN FIVE (5) FT., (MEASURED ALONG THE BEAM) OF EITHER SIDE OF THE DECK JOINTS, SHALL BE CLEANED PER NEAR WHITE BLAST CLEANING SSPC-SP10.

Contract 60F04

SHEET 1 OF 2

ILLINOIS DEPARTMENT OF TRANSPORTATION

GENERAL PAINT NOTES

As Revised 4/14/09 RB

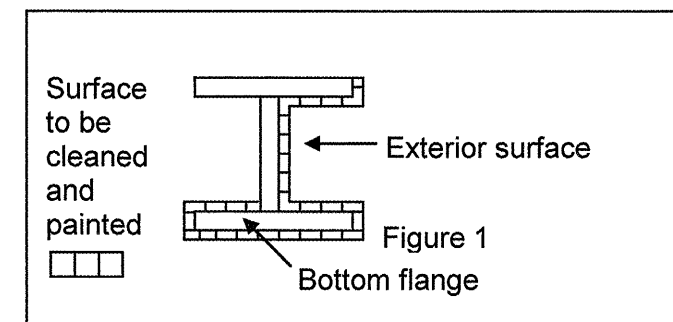
ROUTE	SECTION	COUNTY	TOTAL SHEETS	SHEET NUMBER
VARIOUS	2008-051 BP	VARIOUS	54	5

GENERAL NOTES FOR PAINT

Contract 60F04

LOCATION 8(SN 016-0133)

ALL GIRDER AND STRINGER ENDS, DIAPHRAGMS, CROSS FRAMES, BRACING, AND STIFFENERS WITHIN TEN (10) FT., (MEASURED ALONG THE BEAM) OF EITHER SIDE OF PIER 16 (INCLUDING CROSS GIRDER G-5) AND PIER 18 (INCLUDING CROSS GIRDER G-7), SHALL BE CLEANED PER NEAR WHITE BLAST CLEANING SSPC-SP10.



FASCIA BEAM PAINTING DETAIL
FIGURE 1

SHEET 2 OF 2

ILLINOIS DEPARTMENT OF TRANSPORTATION
GENERAL PAINT NOTES

Rev. 4-15-09

ROUTE	SECTION	COUNTY	TOTAL SHEETS	SHEET NUMBER
VARIOUS	2008-053 BP	VARIOUS	54	6

URBAN
100%
STATE

CONTRACT NO. 60F04

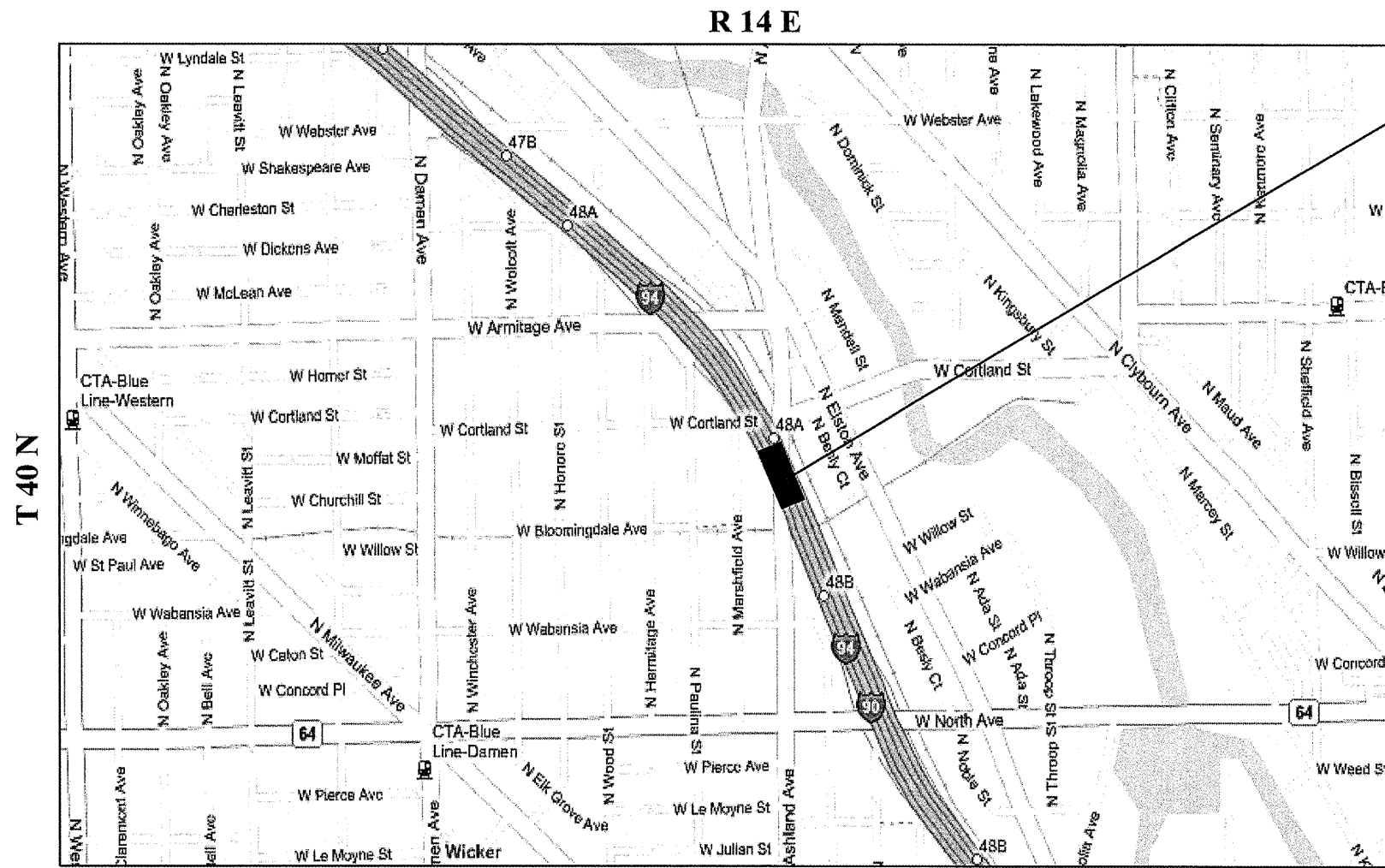
SUMMARY OF QUANTITIES

Code No.	Description	Unit	TOTAL QUANTITIES	CONSTRUCTION TYPE CODE: SFTY - 2A														
				McHENRY COUNTY			LAKE COUNTY		DuPAGE COUNTY		COOK COUNTY			WILL COUNTY				
				LOCATION 1 SN 056-0015	LOCATION 2 SN 056-0016	LOCATION 3 SN 056-0049	LOCATION 4 SN 049-0012	LOCATION 5 SN 049-0022	LOCATION 5 SN 049-0023	LOCATION 6 SN 022-0022	LOCATION 7 SN 022-0038	LOCATION 8 SN 016-0133	LOCATION 9 SN 016-0948	LOCATION 10 SN 099-0091	LOCATION 11 SN 099-0171	LOCATION 12 SN 099-0203		
50600600	CLEANING AND PAINTING STEEL BRIDGE NO. 1	L SUM	1	1														
50600700	CLEANING AND PAINTING STEEL BRIDGE NO. 2	L SUM	1		1													
50600800	CLEANING AND PAINTING STEEL BRIDGE NO. 3	L SUM	1			1												
50600900	CLEANING AND PAINTING STEEL BRIDGE NO. 4	L SUM	1				1											
50601000	CLEANING AND PAINTING STEEL BRIDGE NO. 5	L SUM	1					1										
50601100	CLEANING AND PAINTING STEEL BRIDGE NO. 6	L SUM	1						1									
50601200	CLEANING AND PAINTING STEEL BRIDGE NO. 7	L SUM	1							1								
50601300	CLEANING AND PAINTING STEEL BRIDGE NO. 8	L SUM	1								1							
50601400	CLEANING AND PAINTING STEEL BRIDGE NO. 9	L SUM	1									1						
50601500	CLEANING AND PAINTING STEEL BRIDGE NO. 10	L SUM	1										1					
50601600	CLEANING AND PAINTING STEEL BRIDGE NO. 11	L SUM	1											1				
50601700	CLEANING AND PAINTING STEEL BRIDGE NO. 12	L SUM	1												1			
50601800	CLEANING AND PAINTING STEEL BRIDGE NO. 13	L SUM	1													1		
50606400	CONTAINMENT AND DISPOSAL OF LEAD PAINT CLEANING RESIDUES	L SUM	1			0.11	0.07	0.08	0.08	0.08	0.11	0.22	0.05		0.06	0.07	0.07	
50606600	CONTAINMENT AND DISPOSAL OF NON-LEAD PAINT CLEANING RESIDUES	L SUM	1	0.50	0.50													
67000400	ENGINEER'S FIELD OFFICE, TYPE A	CAL MO	17	0.8	1.0	1.2	1.2	0.7	0.7	1.2	2.0	3.0	1.2		0.8	1.2	2.0	
67100100	MOBILIZATION	L SUM	1	0.04	0.04	0.10	0.06	0.06	0.07	0.07	0.10	0.21	0.06		0.05	0.07	0.07	
70100450	TRAFFIC CONTROL AND PROTECTION, STANDARD 701201	L SUM	1													1		
70102620	TRAFFIC CONTROL AND PROTECTION, STANDARD 701501	L SUM	1				0.69								0.31			
70102625	TRAFFIC CONTROL AND PROTECTION, STANDARD 701606	L SUM	1	0.07	0.09	0.11	0.11	0.06	0.06	0.11		0.28	0.11					
70102630	TRAFFIC CONTROL AND PROTECTION, STANDARD 701601	L SUM	1							1								
70102640	TRAFFIC CONTROL AND PROTECTION, STANDARD 701801	L SUM	1	0.10	0.13	0.15					0.24	0.38						
X0322 467	TEMPORARY INFORMATION SIGNING FOR LANE CLOSURE	SO FT	480	48	48	48	48	24	24	48		48	48		48	48		
X7011015	TRAFFIC CONTROL AND PROTECTION (EXPRESSWAYS)	L SUM	1															1.0
Z0048665	RAILROAD PROTECTIVE LIABILITY INSURANCE	L SUM	1				0.33				0.33		0.34					

ILLINOIS DEPARTMENT OF TRANSPORTATION
SUMMARY OF QUANTITIES

ROUTE	SECTION	COUNTY	TOTAL SHEETS	SHEET NUMBER
VARIOUS	2008-053 BP	VARIOUS	54	13

CONTRACT NO. 60F04



LOCATION 8:
 SN 016-0133
 I-90/94 (KENNEDY EXPWY.) OVER
 ASHLAND AVE.
CITY OF CHICAGO



**WEST CHICAGO TOWNSHIP
 COOK COUNTY**

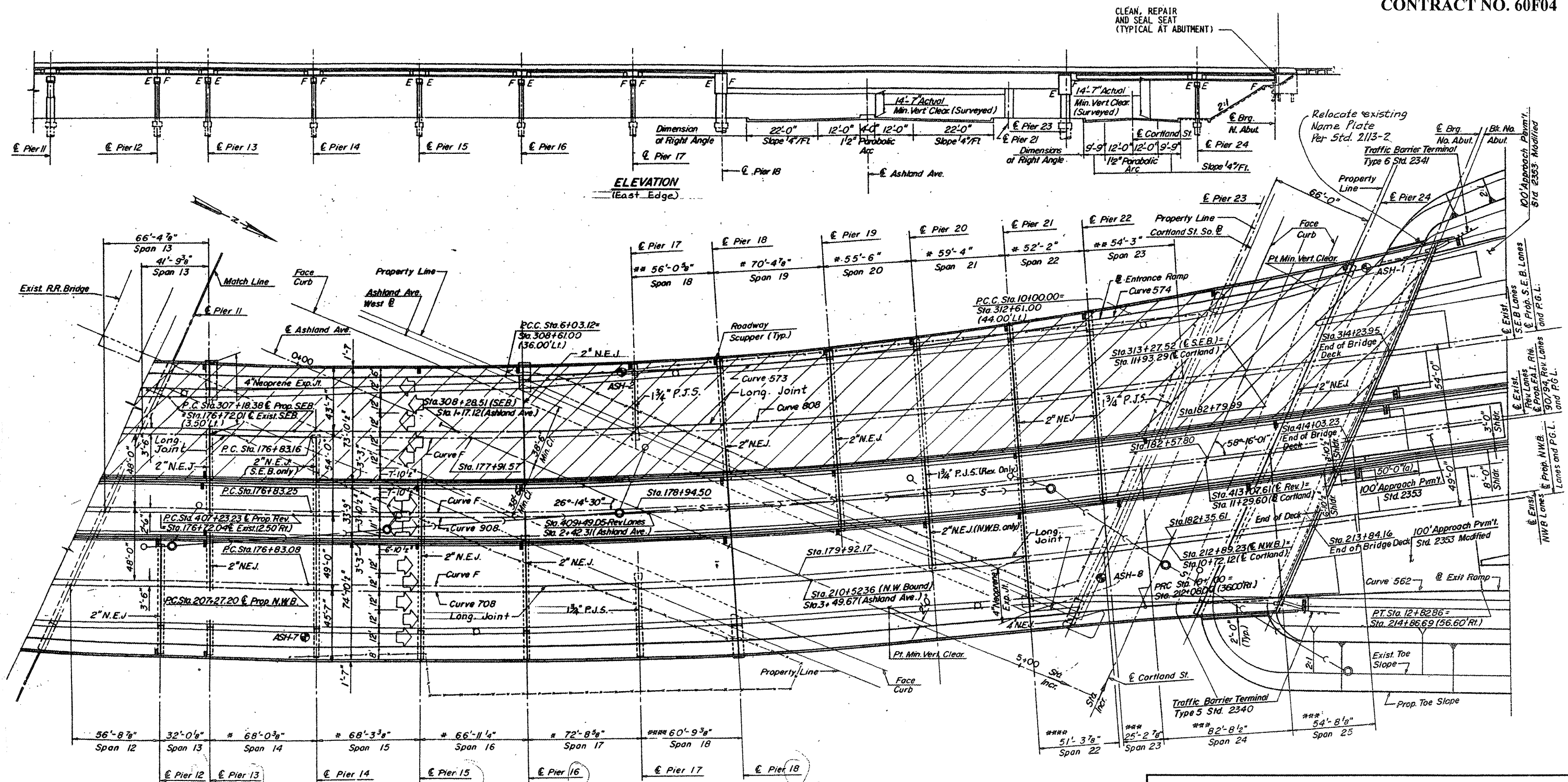
TRAFFIC DATA: I-90/94
 2006 ADT = 305,300
 POSTED SPEED LIMIT = 55 MPH

TRAFFIC DATA: ASHLAND AVE.
 2006 ADT = 26,100
 POSTED SPEED LIMIT = 30 MPH

ILLINOIS DEPARTMENT OF TRANSPORTATION
LOCATION MAPS
 LOCATION 8: I-90/94 OVER ASHLAND AVE.

ROUTE	SECTION	COUNTY	TOTAL SHEETS	SHEET NUMBER
VARIOUS	2008-053 BP	VARIOUS	54	38

CONTRACT NO. 60F04



* Measured at Rt. Angles to C Substructure
 ** Measured along E S.E. Bound Lanes
 *** Measured along E Reversible Lanes
 **** Measured along E N.W. Bound Lanes

LOCATION NO. 8

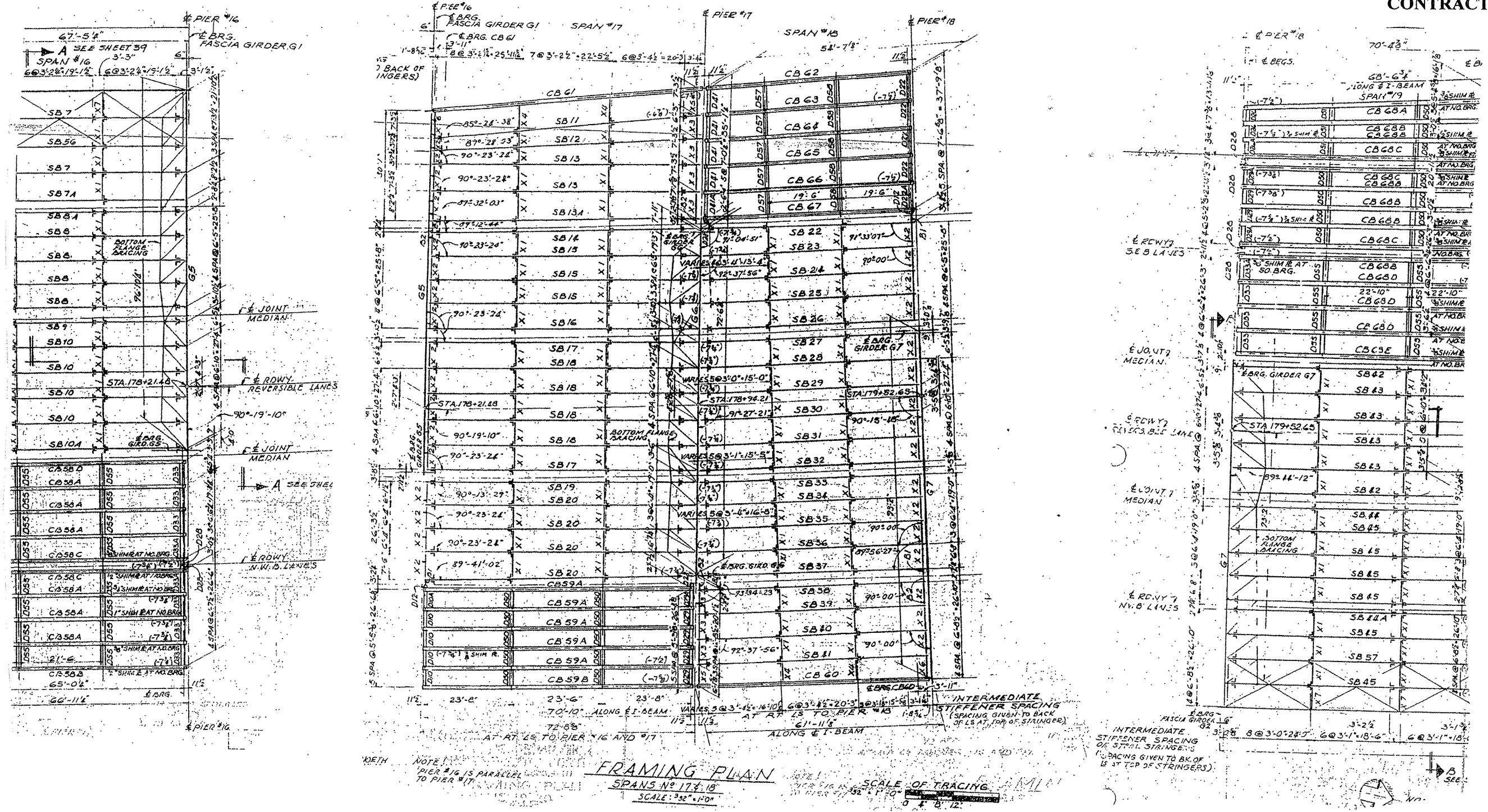
EXIST. BRIDGE PLANS

I-90/94 OVER ASHLAND AVE.

SN 016-0133

ROUTE VARIOUS	SECTION 2008-053 BP	COUNTY VARIOUS	TOTAL SHEETS 54	SHEET NUMBER 39
------------------	------------------------	-------------------	--------------------	--------------------

CONTRACT NO. 60F04



LOCATION NO. 8

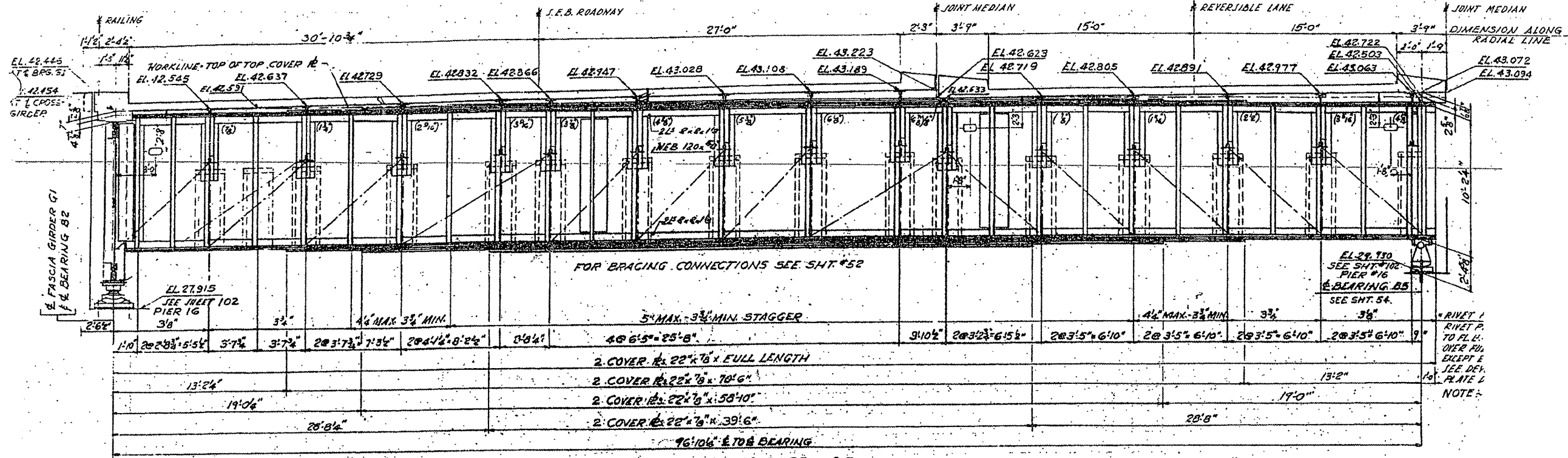
EXIST. BRIDGE PLANS

I-90/94 OVER ASHLAND AVE.

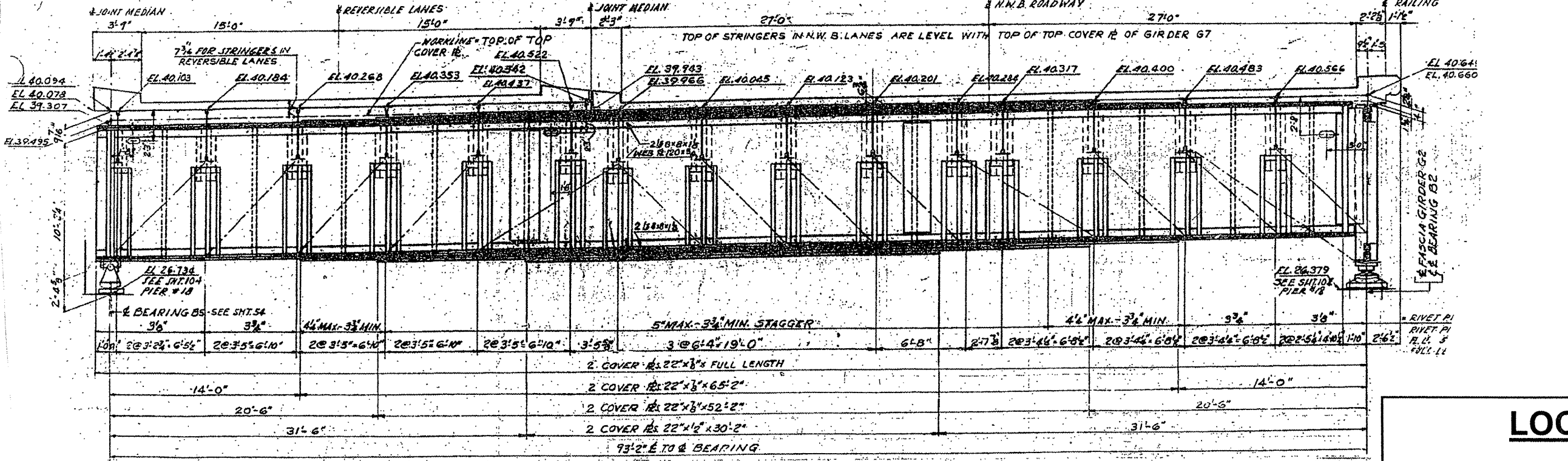
SN 016-0133

ROUTE VARIOUS	SECTION 2008-053 BP	COUNTY VARIOUS	TOTAL SHEETS 54	SHEET NUMBER 41
------------------	------------------------	-------------------	-----------------------	-----------------------

CONTRACT NO. 60F04



ELEVATION CROSSGIRDER G5
SCALE 1/4" = 1'-0"



ELEVATION CROSSGIRDER G7
SCALE 1/4" = 1'-0"

NOTE:
ALL RIVETS IN G5 AND G7
SHALL BE 1" IN 1/16" HOLES

APPROVED AS SHOWN
DIVISIONS OF WORK
SCALE OF TRACING
1" = 1'-0"
0' 1" 2" 3" 4" 5" 6" 7" 8" 9" 10"

LOCATION NO. 8
EXIST. BRIDGE PLANS
I-90/94 OVER ASHLAND AVE.
SN 016-0133