

INDEX OF SHEETS

SHEET NO.	TITLE
1	COVER SHEET
2	INDEX OF SHEETS, STATE STANDARDS, AND GENERAL NOTES
3	SUMMARY OF QUANTITIES
4-6	TRAFFIC CONTROL PLANS
7	ROADWAY AND PAVEMENT MARKING PLAN
8-23	STRUCTURAL DRAWINGS - S.N. 056-0054
24	BUTT JOINT AND HMA TAPER DETAILS (BD-32)
25	TEMPORARY LIGHT POLE DETAILS (BE-800)
26	TEMPORARY AERIAL CABLE INSTALLATION (BE-801)
27-29	TEMPORARY LIGHTING AND TRAFFIC SIGNALS FOR SINGLE LANE STAGING (BE-805)
30	TRAFFIC CONTROL AND PROTECTION FOR SIDE ROADS, INTERSECTIONS, AND DRIVEWAYS (TC-10)
31	TYPICAL APPLICATIONS RAISED REFLECTIVE PAVEMENT MARKERS (SNOW-PLOW RESISTANT) (TC-11)
32	TYPICAL PAVEMENT MARKINGS (TC-13)
33	ARTERIAL ROAD INFORMATION SIGN (TC-22) / DRIVEWAY ENTRANCE SIGNING (TC-26)

STATE STANDARDS

STANDARD NO.	DRAWING NAME
000001-08	STANDARD SYMBOLS, ABBREVIATIONS AND PATTERNS
701201-05	LANE CLOSURE, 2L, 2W, DAY ONLY, FOR SPEEDS ≥ 45 MPH
701301-04	LANE CLOSURE, 2L, 2W, SHORT TIME OPERATIONS
701311-03	LANE CLOSURE 2L, 2W MOVING OPERATIONS - DAY ONLY
701901-09	TRAFFIC CONTROL DEVICES
704001-08	TEMPORARY CONCRETE BARRIER
780001-05	TYPICAL PAVEMENT MARKINGS
782006-01	GUARDRAIL AND BARRIER WALL REFLECTOR MOUNTING DETAILS

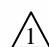
HMA TABLE

HOT-MIX ASPHALT MIXTURE REQUIREMENTS		AIR VOIDS @ Niles	QUALITY MANAGEMENT PROGRAM (QMP)
MIXTURE TYPE			
APPROACH SLABS			
HOT-MIX ASPHALT SURFACE COURSE, MIX "D", IL-9.5, N70, 1-1/2" TO 2"		4% @ 70 Gyr	QC/QA
SHOULDERS			
HOT-MIX ASPHALT SURFACE COURSE, MIX "D", IL-9.5, N70, 1-1/2" TO 2"		4% @ 70 Gyr	QC/QA
QMP DESIGNATION: QUALITY CONTROL/ QUALITY ASSURANCE (QC/QA): QUALITY CONTROL FOR PERFORMANCE (QCP): PAY FOR PERFORMANCE (PFP)			
MIXTURE REQUIREMENT NOTES:			
1.THE UNIT WEIGHT USED TO CALCULATE ALL HMA SURFACE MIXTURE QUANTITIES IS 112 LBS/SQ YD/IN.			
2.THE "AC TYPE" FOR POLYMERIZED HMA MIXES SHALL BE "SBS/SBR PG 76 -22" AND FOR NON-POLYMERIZED HMA THE "AC TYPE" SHALL BE "PG 64 -22" UNLESS MODIFIED BY RECLAIMED MATERIALS SPECIFICATIONS.			

GENERAL NOTES

- THE EXACT LOCATION OF ALL UTILITIES SHALL BE FIELD VERIFIED BY THE CONTRACTOR BEFORE ORDERING ANY MATERIALS AND STARTING ANY WORK. FOR LOCATIONS OF UTILITIES, LOCALLY OWNED EQUIPMENT, LEASED ENFORCEMENT CAMERA SYSTEM FACILITIES AND IDOT UNDERGROUND FACILITIES, CONTACT THE LOCAL COUNTIES, MUNICIPALITIES AND IDOT FOR LOCATES.
- MEADE ELECTRIC COMPANY, THE IDOT DISTRICT ONE ELECTRICAL MAINTENANCE CONTRACTOR, LOCATES IDOT ELECTRICAL EQUIPMENT AND UNDERGROUND CABLES. CALL 773-287-7672 FOR THE INITIAL LOCATE. REQUEST FOR LOCATES OF PREVIOUSLY MARKED FACILITIES MAY BE AT THE CONTRACTOR'S EXPENSE.
- IN ADDITION TO FIELD REVIEW AND AERIAL DATA, PLAN DIMENSIONS AND DETAILS RELATIVE TO THE EXISTING FACILITIES HAVE BEEN TAKEN FROM EXISTING PLANS AND ARE SUBJECT TO CONSTRUCTION VARIATIONS. PLAN DIMENSIONS AND DETAILS RELATIVE TO EXISTING PLANS ARE SUBJECT TO ROUTINE VARIATIONS. IT SHALL BE THE CONTRACTOR'S RESPONSIBILITY TO VERIFY EXISTING DIMENSIONS AND DETAILS AFFECTING NEW CONSTRUCTION AND MAKE NECESSARY APPROVED ADJUSTMENTS PRIOR TO CONSTRUCTION OR ORDERING MATERIALS. SUCH VARIATIONS SHALL NOT BE CAUSE FOR ADDITIONAL COMPENSATION FOR A CHANGE IN THE SCOPE OF WORK. HOWEVER, THE CONTRACTOR WILL BE PAID FOR THE QUANTITY ACTUALLY FURNISHED AT THE BID PRICE FOR THE WORK.
- THE CONTRACTOR WILL NOT BE ALLOWED TO SET UP A YARD OR FIELD OFFICE ON STATE PROPERTY WITHOUT WRITTEN PERMISSION FROM THE DEPARTMENT.
- IT SHALL BE THE CONTRACTOR'S RESPONSIBILITY TO VERIFY ALL DIMENSIONS AND CONDITIONS EXISTING IN THE FIELD PRIOR TO BEGINNING CONSTRUCTION AND ORDERING MATERIALS.
- THE CONTRACTOR SHALL TAKE ALL NECESSARY PRECAUTIONS FOR THE PROTECTION OF EXISTING PLANT MATERIAL FOR WHICH THE CONTRACT DOES NOT PROVIDE REMOVAL. THE PROTECTION OF EXISTING PLANT MATERIAL AND THE REPAIR OR REPLACEMENT OF EXISTING PLANT MATERIAL DAMAGED BY THE CONTRACTOR SHALL BE DONE IN ACCORDANCE WITH THE REQUIREMENTS OF SECTION 201 OF THE STANDARD SPECIFICATIONS.
- THE DEPARTMENT HAS NOT OBTAINED ANY PERMITS FOR OFFSITE BORROW, WASTE, USE (BWU) AREAS. PRIOR TO WORKING IN BWU AREAS, IF THE CONTRACTOR CHOOSES TO USE ACTIVITIES REQUIRING PERMITS IT IS THE CONTRACTOR'S RESPONSIBILITY TO SECURE THE PROPER PERMITS. IN ADDITION TO THE BORROW REVIEW (BDE 2289) AND USE/WASTE REVIEW (BDE 2290) SUBMITTALS, THE CONTRACTOR SHALL SUBMIT AN EROSION AND SEDIMENT CONTROL (ESC) PLAN FOR EVERY BWU SITE TO THE DEPARTMENT FOR ACCEPTANCE. GUIDELINES FOR ACCEPTABLE BWU PRACTICES CAN BE FOUND IN SECTION 11.G.1. THE COST OF ALL MATERIALS AND LABOR NECESSARY TO COMPLY WITH THE ABOVE PROVISIONS TO PREPARE AND IMPLEMENT ESC PLANS WILL NOT BE PAID FOR SEPARATELY, BUT SHALL BE CONSIDERED AS INCLUDED IN THE CONTRACT UNIT PRICES AND NO ADDITIONAL COMPENSATION WILL BE ALLOWED.
- THE CONTRACTOR SHALL CONTACT KALPANA KANNAN-HOSADURGA THE DISTRICT ONE TRAFFIC CONTROL SUPERVISOR AT KALPANA.KANNAN-HOSADURGA@ILLINOIS.GOV A MINIMUM OF 72 HOURS IN ADVANCE OF BEGINNING WORK.
- THE RESIDENT ENGINEER SHALL CONTACT WALTER CZARNY, AREA TRAFFIC FIELD ENGINEER, AT WALTER.CZARNY@ILLINOIS.GOV A MINIMUM OF TWO (2) WEEKS PRIOR TO THE PLACEMENT OF PERMANENT PAVEMENT MARKINGS.
- THE DEPARTMENT HAS DETERMINED THAT IN STREAM WORK IS NOT REQUIRED FOR THE WORK SPECIFIED IN THIS CONTRACT. THE DEPARTMENT HAS NOT OBTAINED A 404 PERMIT. IF THE CONTRACTOR CHOOSES TO USE ACTIVITIES REQUIRING AN USACE 404 PERMIT IT IS THE CONTRACTOR'S RESPONSIBILITY TO SECURE THE PROPER USACE PERMITS.
- THESE PLANS HAVE BEEN PREPARED FROM NOTES RECEIVED FROM I.D.O.T. FIELD MAINTENANCE ENGINEERS.
- THE CONTRACTOR SHALL USE CARE IN REMOVING OR EXCAVATING NEAR ALL EXISTING ITEMS WHICH WILL REMAIN. ANY DAMAGE DONE TO EXISTING ITEMS BY THE CONTRACTOR SHALL BE REPAIRED AT THE CONTRACTOR'S EXPENSE.
- SAW CUTTING PRIOR TO ANY REMOVAL ITEMS NOTED ON THE PLANS OR DIRECTED BY THE ENGINEER SHALL BE CONSIDERED INCLUDED IN THE COST OF THE ITEMS BEING REMOVED.
- FOR WORK OUTSIDE THE LIMITS OF BRIDGE APPROACH PAVEMENT. ALL REFERENCES IN THE HIGHWAY STANDARDS AND STANDARD SPECIFICATIONS FOR REINFORCEMENT, DOWEL BARS AND TIE BARS IN PAVEMENT SHALL BE EPOXY COATED UNLESS NOTED ON THE PLANS.
- DOUBLE LANE MARKERS ARE TO BE USED AS SHOWN ON THE DISTRICT ONE DETAIL "TYPICAL APPLICATIONS-RAISED REFLECTIVE PAVEMENT MARKERS (SNOW-PLOW RESISTANT)" SHOWN IN PLANS.
- THE CENTERLINE IS FOR INFORMATION ONLY.

MODEL: Default
FILE NAME: P:\P\2202\IWO 06 62T02\DC\DC\CADD_Sheets\62T02-ent-gennotes.dgn

 REVISED SHEET 7/192024

 INFRASTRUCTURE ENGINEERING <small>INCORPORATED</small> 1 South Wacker Suite 2650 Chicago, IL 60606 P 312.425.9580 F 312.425.9584 www.infrastructure-eng.com	USER NAME = ALane PLOT SCALE = 20.0000' / in. PLOT DATE = 7/18/2024	DESIGNED - MLD DRAWN - MLD CHECKED - ACL DATE - 06/07/2024	REVISED -  ACL 7/18/2024 REVISED - REVISED - REVISED -	STATE OF ILLINOIS DEPARTMENT OF TRANSPORTATION	INDEX OF SHEETS, STATE STANDARDS, AND GENERAL NOTES IL-47 OVER SLOUGH CREEK BRIDGE	F.A.P. RTE. = 326 SECTION = FAP 0326 22 BJ2 COUNTY = MCHENRY TOTAL SHEETS = 33 SHEET NO. = 2 CONTRACT NO. = 62T02	ILLINOIS FED. AID PROJECT
	SCALE: SHEET OF SHEETS STA. TO STA.						

PAY ITEM NUMBER	DESIGNATION	UNIT	TOTAL QUANTITY	CONSTRUCTION CODE	
				URBAN	
				0059	80% FEDERAL 20% STATE
40600290	BITUMINOUS MATERIALS (TACK COAT)	POUND	326	326	
40600942	HOT-MIX ASPHALT SURFACE REMOVAL - BUTT JOINT	SQ YD	291	291	
40604062	HOT-MIX ASPHALT SURFACE COURSE, IL-9.5, MIX "D", N70	TON	68	68	
50102400	CONCRETE REMOVAL	CU YD	6.4	6.4	
50300255	CONCRETE SUPERSTRUCTURE	CU YD	7.6	7.6	
50300300	PROTECTIVE COAT	SQ YD	364	364	
50500405	FURNISHING AND ERECTING STRUCTURAL STEEL	POUND	200	200	
50800205	REINFORCEMENT BARS, EPOXY COATED	POUND	770	770	
50800515	BAR SPLICERS	EACH	10	10	
52000110	PREFORMED JOINT STRIP SEAL	FOOT	96	96	
52100520	ANCHOR BOLTS, 1"	EACH	12	12	
67100100	MOBILIZATION	L SUM	1	1	
* 70106500	TEMPORARY BRIDGE TRAFFIC SIGNALS	EACH	1	1	
70107025	CHANGEABLE MESSAGE SIGN	CAL DA	84	84	
70300150	SHORT TERM PAVEMENT MARKING REMOVAL	SQ FT	1016	1016	
70307120	TEMPORARY PAVEMENT MARKING - LINE 4" - TYPE IV TAPE	FOOT	2,760	2,760	
70307210	TEMPORARY PAVEMENT MARKING - LINE 24"- TYPE IV TAPE	FOOT	48	48	
70400100	TEMPORARY CONCRETE BARRIER	FOOT	350.0	350.0	
70400200	RELOCATE TEMPORARY CONCRETE BARRIER	FOOT	350	350	
70600250	IMPACT ATTENUATORS, TEMPORARY (NON- REDIRECTIVE), TEST LEVEL 3	EACH	2	2	
70600350	IMPACT ATTENUATORS, RELOCATE (NON- REDIRECTIVE), TEST LEVEL 3	EACH	2	2	
* 78000200	THERMOPLASTIC PAVEMENT MARKING - LINE 4"	FOOT	2,904	2,904	
* 78000600	THERMOPLASTIC PAVEMENT MARKING - LINE 12"	FOOT	123	123	
* 78009004	MODIFIED URETHANE PAVEMENT MARKING - LINE 4"	FOOT	676	676	

* = SPECIALTY ITEM

PAY ITEM NUMBER	DESIGNATION	UNIT	TOTAL QUANTITY	CONSTRUCTION CODE	
				URBAN	
				0059	80% FEDERAL 20% STATE
* 78100100	RAISED REFLECTIVE PAVEMENT MARKER	EACH	12	12	
* 78200011	BARRIER WALL REFLECTORS, TYPE C	EACH	39	39	
78300200	RAISED REFLECTIVE PAVEMENT MARKER REMOVAL	EACH	12	12	
78300202	PAVEMENT MARKING REMOVAL - WATER BLASTING	SQ FT	431	431	
* X0326276	TEMPORARY LIGHTING FOR SINGLE LANE STAGING	L SUM	1	1	
X2700001	TEMPORARY RUMBLE STRIPS (SPECIAL)	EACH	6	6	
70106700	TEMPORARY RUMBLE STRIPS	EACH	6	6	
X5030250	BRIDGE DECK GROOVING (LONGITUDINAL)	SQ YD	192	192	
X5060700	CLEANING AND PAINTING BEARINGS	EACH	14	14	
X6700407	ENGINEER'S FIELD OFFICE, TYPE A (D1)	CAL MO	12	12	
X7010216	TRAFFIC CONTROL AND PROTECTION, (SPECIAL)	L SUM	1	1	
X7830050	RAISED REFLECTIVE PAVEMENT MARKER, REFLECTOR REMOVAL	EACH	32	32	
Z0001700	APPROACH SLAB REPAIR (FULL DEPTH)	SQ YD	1	1	
Z0001800	APPROACH SLAB REPAIR (PARTIAL DEPTH)	SQ YD	39	39	
Z0006016	BRIDGE DECK LATEX CONCRETE OVERLAY, 2 3/4 INCHES	SQ YD	300	300	
Z0012130	BRIDGE DECK SCARIFICATION 3/4"	SQ YD	300	300	
Z0012754	STRUCTURAL REPAIR OF CONCRETE (DEPTH EQUAL TO OR LESS THAN 5 INCHES)	SQ FT	27	27	
Z0015550	DEBRIS REMOVAL	CU YD	1	1	
Z0016002	DECK SLAB REPAIR (FULL DEPTH, TYPE II)	SQ YD	1	1	
Z0029090	DIAMOND GRINDING (BRIDGE SECTION)	SQ YD	287	287	
Z0030850	TEMPORARY INFORMATION SIGNING	SQ FT	67	67	
* X7830052	RAISED REFLECTIVE PAVEMENT MARKER, REFLECTOR REPLACEMENT	EACH	32	32	
* Z0073510	TEMPORARY TRAFFIC SIGNAL TIMING	EACH	1	1	

MODEL: Default
FILE NAME: P:\22722-4675-00 IDOT Various Phase 1 (P18 206-0031)WD 06 62T02\DCN\CADD Sheets\62T02-INT-500-01.dgn

<p>INFRASTRUCTURE ENGINEERING INCORPORATED 1 South Wacker Suite 2650 Chicago, IL 60606 P 312.425.9580 F 312.425.9584 www.infrastructure-eng.com</p>	USER NAME = ALane	DESIGNED - MLD	REVISED -
	PLOT SCALE = 20.0000' / in.	DRAWN - MLD	REVISED -
	PLOT DATE = 5/10/2024	CHECKED - ACL	REVISED -
		DATE - 05/10/2024	REVISED -

**STATE OF ILLINOIS
DEPARTMENT OF TRANSPORTATION**

SUMMARY OF QUANTITIES			
IL-47 OVER SLOUGH CREEK BRIDGE			
SCALE:	SHEET	OF SHEETS	STA. TO STA.

F.A.P. RTE. 326	SECTION FAP 0326 22 BJ2	COUNTY MCHENRY	TOTAL SHEETS 33	SHEET NO. 3
ILLINOIS FED. AID PROJECT			CONTRACT NO. 62T02	

REVISED SHEET 7/19/2024

MAINTENANCE OF TRAFFIC GENERAL NOTES

- ALL MAINTENANCE OF TRAFFIC (MOT) LANE CLOSURES CAN BE COMPLETED WITH IDOT HIGHWAY STANDARDS. THE MOT PLANS SHALL SERVE AS A GUIDE FOR SAFE DIVERSION OF TRAFFIC DURING EXECUTION OF THIS CONTRACT. HOWEVER, THE CONTRACTOR, AT NO ADDITIONAL EXPENSE TO THE DEPARTMENT, MAY IMPROVE OR MODIFY THE MOT PLANS TO MEET CONSTRUCTION NEEDS BUT NOT AT THE EXPENSE OF PUBLIC SAFETY OR CONVENIENCE. ANY CHANGES TO THE MOT PLANS SHALL BE SUBMITTED TO THE ENGINEER FOR APPROVAL.
- THE CONTRACTOR SHALL CONTACT THE IDOT DISTRICT 1 ARTERIAL TRAFFIC CONTROL SUPERVISOR AT KALPANA.KANNAN-HOSADURGA@ILLINOIS.GOV A MINIMUM OF 72 HOURS IN ADVANCE OF BEGINNING WORK.
- THE IL-47 WORK ZONE SPEED LIMIT SHALL BE 40 MPH.
- CHANGEABLE MESSAGE SIGN LOCATIONS, MESSAGES, AND DURATIONS SHALL BE DETERMINED BY THE ENGINEER.
- EXISTING REFLECTOR ELEMENTS IN RAISED REFLECTIVE PAVEMENT MARKERS THAT CONFLICT WITH STAGED TRAFFIC PATTERNS SHALL BE REMOVED UNDER THIS CONTRACT. THESE SHALL BE REPLACED WITHIN THE LIMITS OF THIS CONTRACT'S MAINTENANCE OF TRAFFIC, ALONG WITH ANY OTHER MARKERS THAT WERE MISSING REFLECTOR ELEMENTS PRIOR TO REOPENING THE LANES TO TRAFFIC.
- PAVEMENT MARKING TAPE, TYPE IV SHALL BE USED FOR SHORT TERM PAVEMENT MARKINGS ON ALL FINAL SURFACES.

IL-47 CONSTRUCTION STAGING

MAINTENANCE OF TRAFFIC - STAGE 1

CONSTRUCTION:

- COMPLETE BRIDGE DECK SCARIFICATION, LATEX CONCRETE OVERLAY, DIAMOND GRINDING, GROOVING, SEALING, AND JOINT AND OTHER REPAIRS OF THE EAST SIDE (NORTHBOUND DIRECTION) OF THE BRIDGE.
- COMPLETE BUTT JOINT ON APPROACH PAVEMENT EAST SIDE (NORTHBOUND DIRECTION).

MAINTENANCE OF TRAFFIC:

- CLOSE THE NORTHBOUND LANE OF TRAFFIC AND SHIFT TRAFFIC TO THE SOUTHBOUND LANES. 1 LANE SHALL BE MAINTAINED.
- TRAFFIC SIGNAL SHALL BE USE TO MAINTAIN TRAFFIC DIRECTION.
- CLOSE RAYCRAFT ROAD TO TRAFFIC FROM JANKOWSKI ROAD TO IL-47.

MAINTENANCE OF TRAFFIC - STAGE 2

CONSTRUCTION:

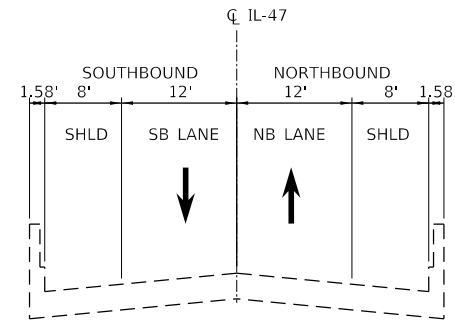
- COMPLETE BRIDGE DECK SCARIFICATION, LATEX CONCRETE OVERLAY, DIAMOND GRINDING, GROOVING, SEALING, AND JOINT AND OTHER REPAIRS OF THE WEST SIDE (SOUTHBOUND DIRECTION) OF THE BRIDGE.
- COMPLETE BUTT JOINT ON APPROACH PAVEMENT ON WEST SIDE (SOUTHBOUND DIRECTION) OF THE BRIDGE.

MAINTENANCE OF TRAFFIC:

- CLOSE THE SOUTHBOUND LANES OF TRAFFIC AND SHIFT TRAFFIC TO THE NORTHBOUND LANES. 1 LANE SHALL BE MAINTAINED.
- TRAFFIC SIGNAL SHALL BE USE TO MAINTAIN TRAFFIC DIRECTION.
- CLOSE RAYCRAFT ROAD TO TRAFFIC FROM JANKOWSKI ROAD TO IL-47.

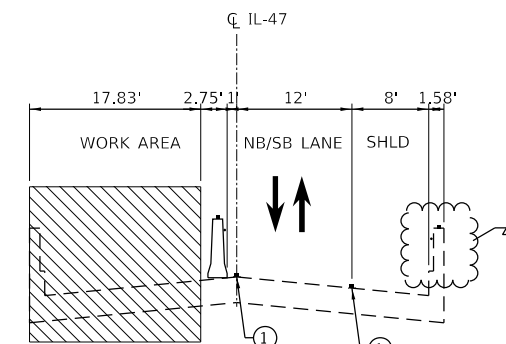
WORK ZONE SPEED LIMIT:

	EXISTING POSTED SPEED	PROPOSED WORK ZONE SPEED
STAGE 1	55 MPH	45 MPH
STAGE 2	55 MPH	45 MPH



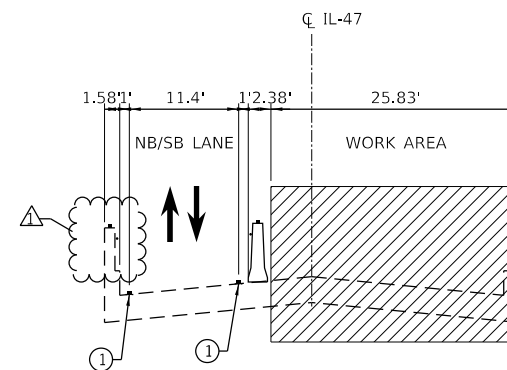
EXISTING TYPICAL CROSS SECTION

ON SN 056-0054



STAGE 1 CONSTRUCTION

ON SN 056-0054

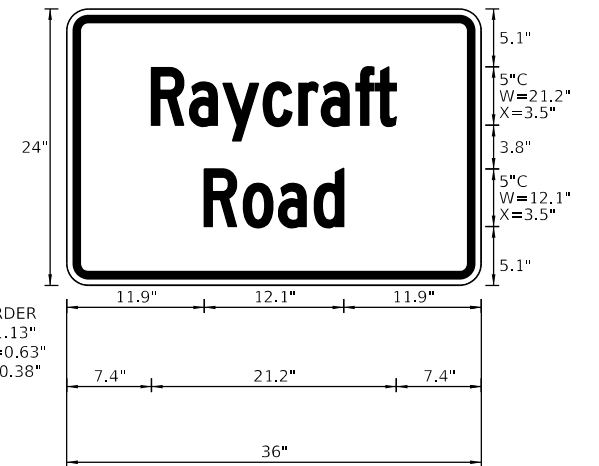


STAGE 2 CONSTRUCTION

ON SN 056-0054

MOT TYPICAL LEGEND:

- ① TEMPORARY PAVEMENT MARKING TAPE, TYPE IV (WHITE)
- WORK AREA
- DIRECTION OF TRAVEL
- TEMPORARY CONCRETE BARRIER WITH TYPE C, BI-DIRECTIONAL CRYSTAL REFLECTORS PER STD 704001 AND 782006.
- BRIDGE PARAPET WITH TYPE C, BI-DIRECTIONAL CRYSTAL REFLECTORS PER STD 704001 AND 782006.
- TEMPORARY PAVEMENT MARKING



BORDER
R=1.13"
TH=0.63"
IN=0.38"

Panel Style: warning_rectangular_IDOT_FO_0.625_0.375.ssi
M.U.T.C.D.: 2009 Edition

SPECIAL SIGN DETAIL

REVISION SHEET 7/19/2024

MODEL: D:\64bit\... FILE NAME: P:\22\222-4675-00_IDOT_Various_Phase_2_(FTE_206-002)\1\06_63702\IDOT\CADD_Sheets\62T02-INT-MOT-01.dwg

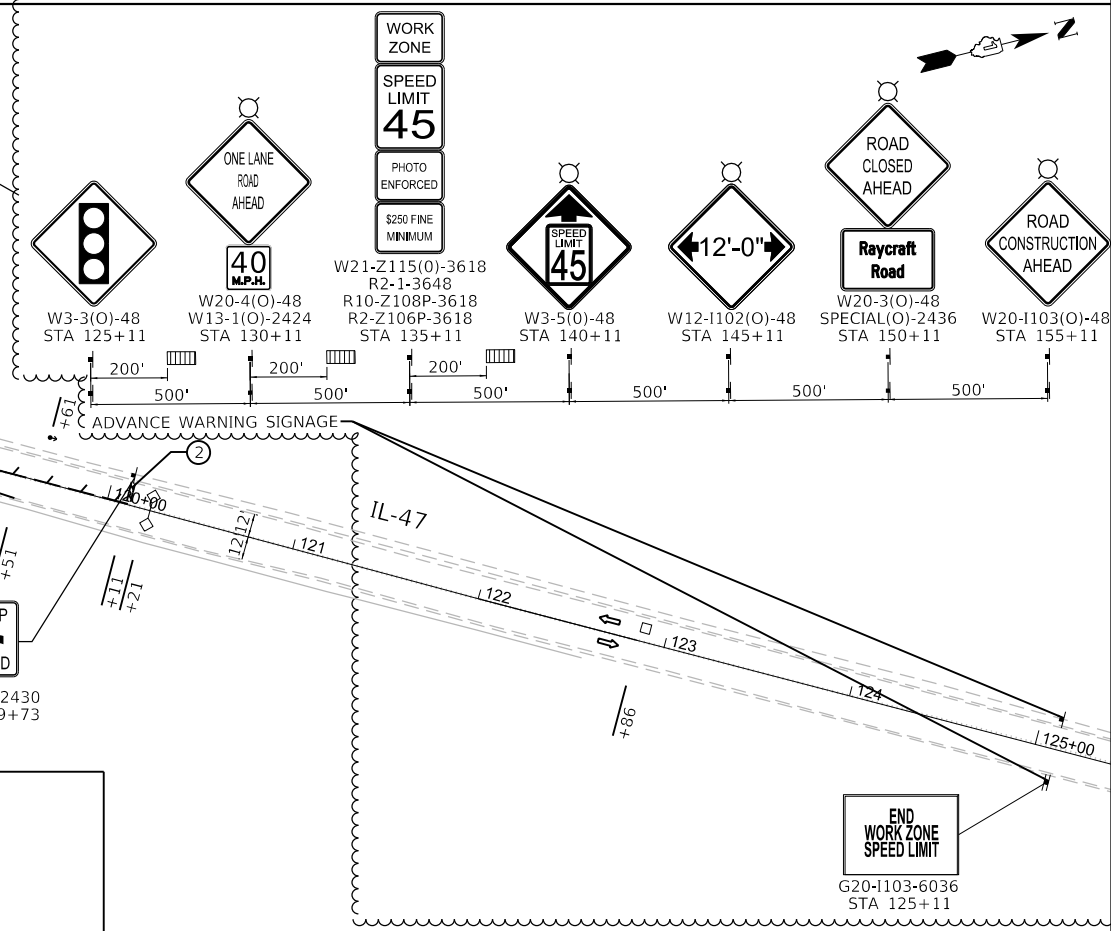
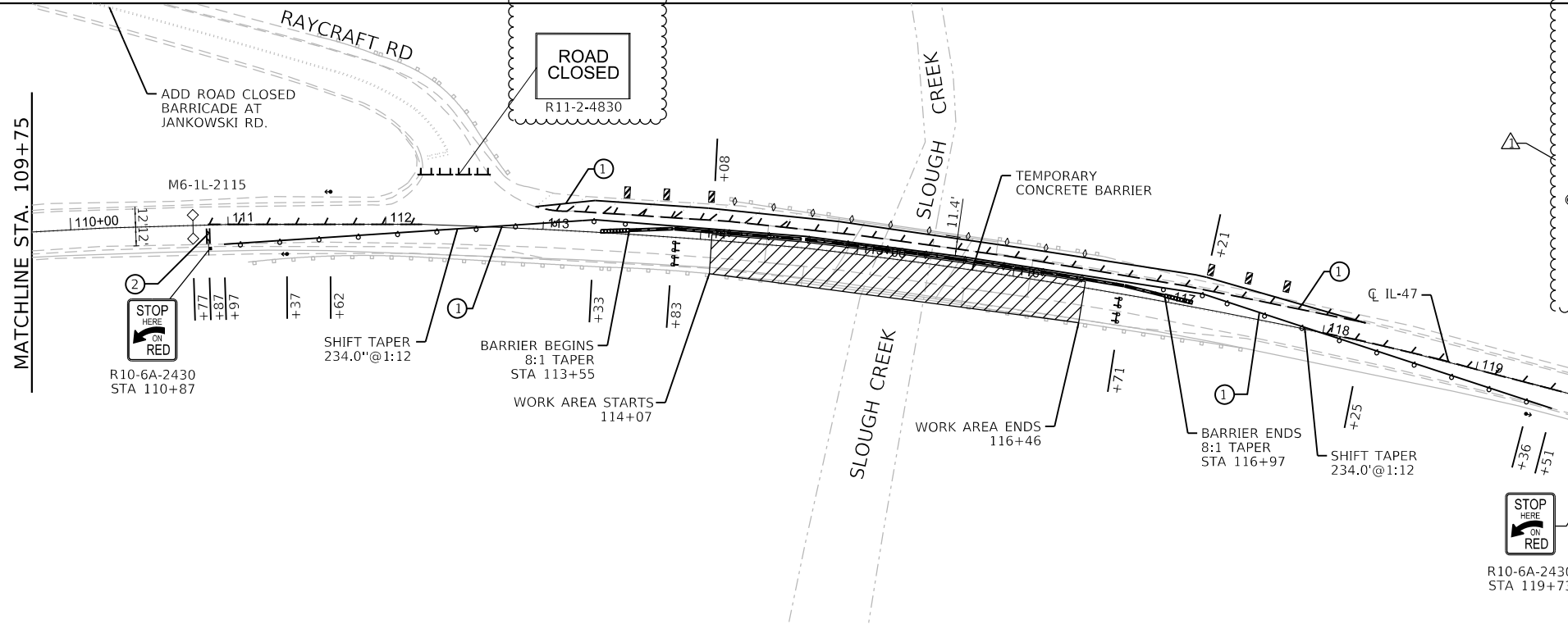
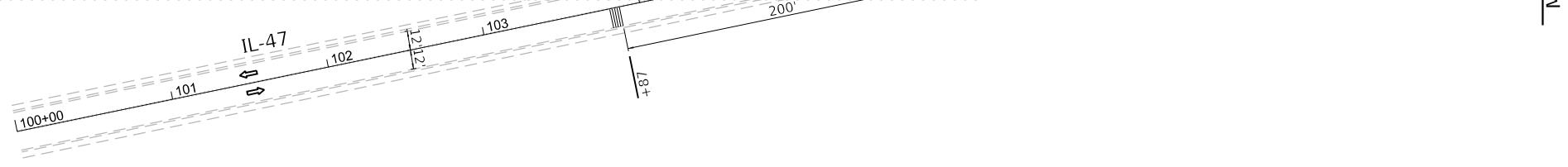
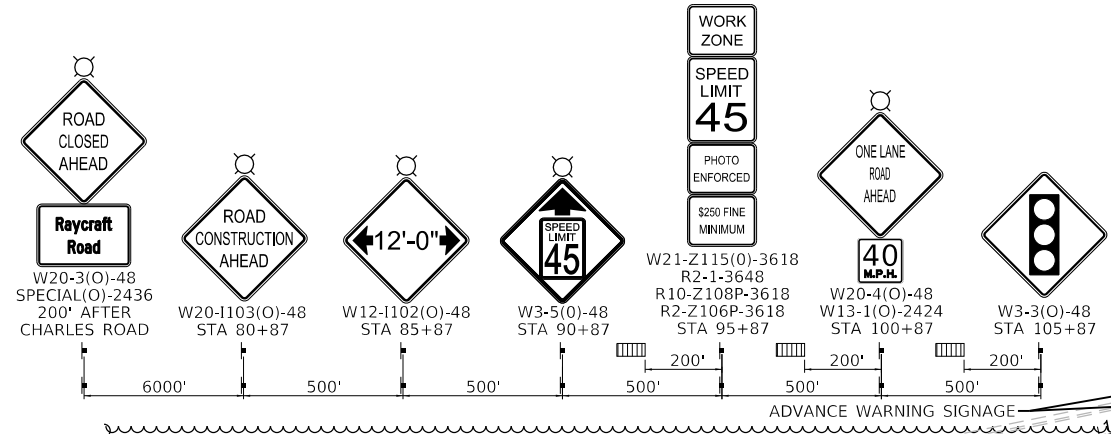
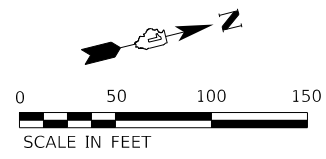
<p>INFRASTRUCTURE ENGINEERING INCORPORATED 1 South Wacker Suite 2650 Chicago, IL 60606 P 312.425.9589 F 312.425.9594 www.infrastructure-eng.com</p>	USER NAME = ALane	DESIGNED - MLD	REVISED - ACL 7/17/2024
	PLOT SCALE = 20.0000' / in.	DRAWN - MLD	REVISED -
	PLOT DATE = 7/18/2024	CHECKED - ACL	REVISED -
		DATE - 06/07/2024	REVISED -

STATE OF ILLINOIS
DEPARTMENT OF TRANSPORTATION

TRAFFIC CONTROL PLANS
GENERAL NOTES AND TYPICAL SECTIONS

SCALE: 1" = 50' SHEET OF SHEETS STA. TO STA.

F.A.P. RTE.	SECTION	COUNTY	TOTAL SHEETS	SHEET NO.
326	FAP 0326 22 BJ2	MCHENRY	33	4
CONTRACT NO. 62T02			ILLINOIS FED. AID PROJECT	



MOT SYMBOL LEGEND		MOT PROPOSED LEGEND	
	WORK AREA		CRYSTAL, BIDIRECTIONAL BARRIER WALL REFLECTOR
	DRUM WITH STEADY BURNING BI-DIRECTIONAL LIGHT		DECTOR LOOPS
	DRUM OR BARRICADE		DOUBLE VERTICAL PANEL
	TYPE III BARRICADE WITH FLASHING LIGHTS		TEMPORARY RUMBLE STRIP
	TRAFFIC SIGNAL		
	DIRECTION OF TRAFFIC		
	SIGN ON PORTABLE OR PERMANENT SUPPORT		
	TYPE III BARRICADE		
	TEMPORARY CONCRETE BARRIER WITH TYPE C, BI-DIRECTIONAL CRYSTAL REFLECTORS PER STD 704001 AND 782006 CONCRETE BARRIER		
	IMPACT ATTENUATOR		

NOTE: REMOVE CONFLICTING PAVEMENT MARKINGS USING PAVEMENT MARKING REMOVAL - WATERBLASTING

REVISED SHEET 7/19/2024

MODEL: D:\64bit... FILE NAME: P:\22222222\4675-00_IDOT_Various Phase 2 (FEB_2016-2021)\WO_06_637021\CONCACDD_Sheets\62T02-TRC-MOT-C32.dwg

<p>INFRASTRUCTURE ENGINEERING INCORPORATED 1 South Wacker Suite 2650 Chicago, IL 60606 P 312.425.9569 F 312.425.9568 www.infrastructure-eng.com</p>	USER NAME = ALane	DESIGNED - MLD	REVISED - ACL 7/18/2024
	PLOT SCALE = 100.0000' / in.	DRAWN - MLD	REVISED -
	PLOT DATE = 7/18/2024	CHECKED - ACL	REVISED -
		DATE - 06/07/2024	REVISED -

**STATE OF ILLINOIS
DEPARTMENT OF TRANSPORTATION**

TRAFFIC CONTROL PLANS STAGE 2			
SCALE: 1" = 50'	SHEET	OF SHEETS	STA. TO STA.

F.A.P. RTE.	SECTION	COUNTY	TOTAL SHEETS	SHEET NO.
326	FAP 0326 22 BJ2	MCHENRY	33	6
CONTRACT NO. 62T02			ILLINOIS FED. AID PROJECT	