

STATE OF ILLINOIS
DEPARTMENT OF TRANSPORTATION

F.A.P. RTE.	SECTION	COUNTY	TOTAL SHEETS	SHEET NO.
856	FAP 0856 22 RS	WILL	27	1
		ILLINOIS	CONTRACT NO. 62T29	

D-91-279-22



PROPOSED HIGHWAY PLANS

**FAP ROUTE 856: US 6 (EAMES STREET)
FROM 0.2 MILES SOUTH OF McCLINTOCK RD
TO 0.5 MILES NORTHEAST OF I-55
SECTION: FAP 0856 22 RS
PROJECT: NHPP-AUMX(410)
SMART OVERLAY
WILL COUNTY**

C-91-333-22

FOR INDEX OF SHEETS, SEE SHEET NO. 2

**THE IMPROVEMENT IS LOCATED IN
THE VILLAGE OF CHANNAHON AND
THE CITY OF JOLIET**

TRAFFIC DATA

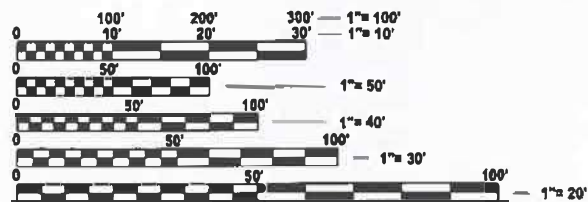
**US 6 (EAMES STREET)
ADT: 9,300 (2021)
POSTED SPEED LIMIT: 50MPH**

**I-55
ADT: 60,100 (2022)
POSTED SPEED LIMIT: 65MPH**

**THE IMPROVEMENT BEGINS:
STATION 49+41**

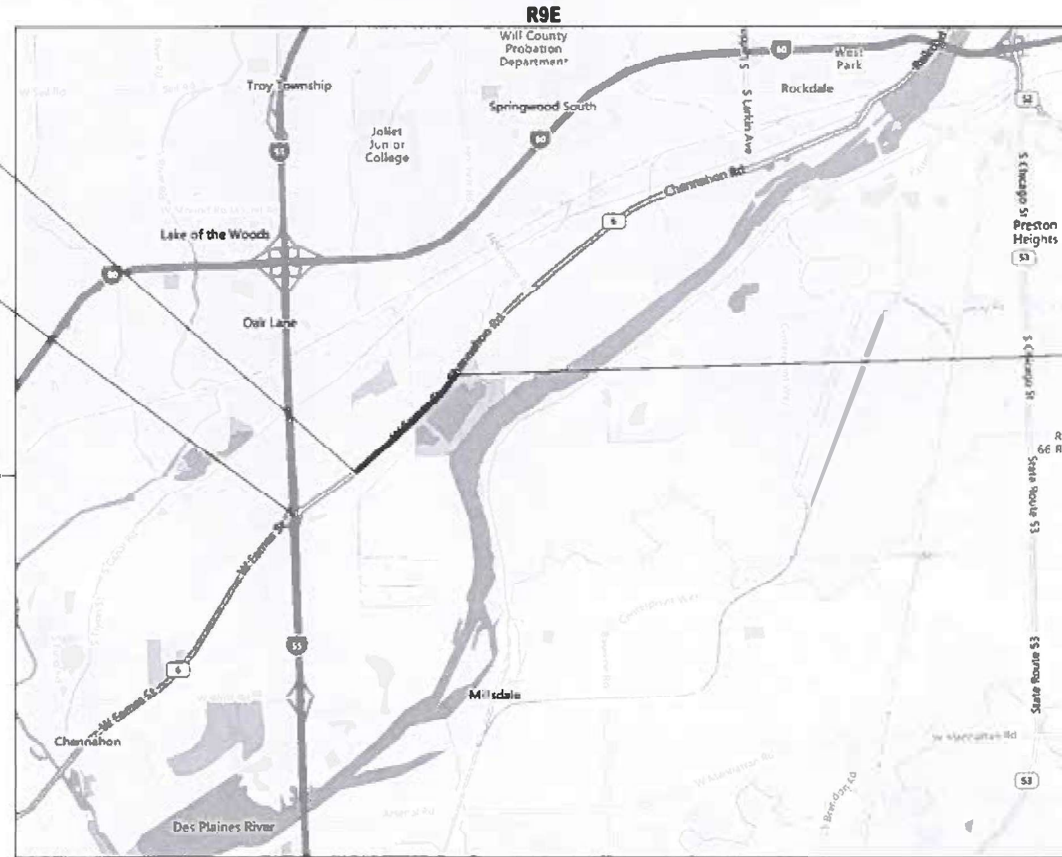
**ROADSIDE SAFETY IMPROVEMENT:
US 6 AT I-55 (SB)**

**THE IMPROVEMENT ENDS:
STATION 109+26**



FULL SIZE PLANS HAVE BEEN PREPARED USING STANDARD ENGINEERING SCALES. REDUCED SIZED PLANS WILL NOT CONFORM TO STANDARD SCALES. IN MAKING MEASUREMENTS ON REDUCED PLANS, THE ABOVE SCALES MAY BE USED.

**J.U.L.I.E.
JOINT UTILITY LOCATION INFORMATION FOR EXCAVATION
1-800-892-0123
OR 811**



TOWNSHIPS OF CHANNAHON AND TROY

GROSS LENGTH = 5,985 FT. = 1.134 MILE
NET LENGTH = 5,985 FT. = 1.134 MILE

**PROJECT ENGINEER: RODRIGO LEDEZMA (847) 705-4580
PROJECT MANAGER: J. ALAIN MIDY (847) 221-3056**

CONTRACT NO. 62T29

STATE OF ILLINOIS
DEPARTMENT OF TRANSPORTATION

SUBMITTED 5/7 2024

[Signature]
REGIONAL ENGINEER

June 28, 2024 *[Signature]*
ENGINEER OF DESIGN AND ENVIRONMENT

June 28, 2024 *[Signature]*
DIRECTOR OF HIGHWAYS PROJECT IMPLEMENTATION

**PRINTED BY THE AUTHORITY
OF THE STATE OF ILLINOIS**

GENERAL NOTES

1. THE CONTRACTOR WILL NOT BE ALLOWED TO SET UP A YARD OR FIELD OFFICE ON STATE PROPERTY WITHOUT WRITTEN PERMISSION FROM THE DEPARTMENT.
2. ALL MILLED SURFACES SHALL BE A UNIFORM CROSS SLOPE PER LANE AND FREE OF RIDGES BETWEEN PASSES. ANY DEVIATIONS SHALL BE CORRECTED AT NO COST TO THE DEPARTMENT.
3. ALL PAVEMENT PATCHING LOCATIONS WILL BE DETERMINED IN THE FIELD BY THE ENGINEER.
4. LOCATION OF COMBINATION CONCRETE AND GUTTER REMOVAL AND REPLACEMENT, WILL BE DETERMINED IN THE FIELD BY THE ENGINEER.
5. TEN (10) FOOT TRANSITIONS SHALL BE USED TO MATCH PROPOSED CURB AND GUTTER AND MEDIAN ITEMS OF WORK TO EXISTING CURBS AND GUTTER AND MEDIANS IN THE FIELD, UNLESS OTHERWISE SHOWN.
6. DRAINAGE ADJUSTMENT OR RECONSTRUCTION LOCATIONS WILL BE DETERMINED IN THE FIELD BY THE ENGINEER.
7. IT SHALL BE THE CONTRACTOR'S RESPONSIBILITY TO VERIFY ALL DIMENSIONS AND CONDITIONS EXISTING IN THE FIELD PRIOR TO CONSTRUCTION AND ORDERING OF MATERIALS.
8. FRAMES AND GRATES/LIDS ADJUSTMENT OF PRIVATE UTILITIES WITHIN THE LIMITS OF THE IMPROVEMENT SHALL BE DONE BY THEIR RESPECTIVE OWNERS AND ARE NOT PART OF THIS CONTRACT.
9. THE CONTRACTOR SHALL BE REQUIRED TO KEEP A RECORD OF THE LOCATIONS OF PLATED STRUCTURES BY STATION AND OFFSET LEFT OR RIGHT OF THE CENTERLINE OF PAVEMENT.
10. EXISTING BROKEN FRAMES AND LIDS SHALL BE REMOVED AND DISPOSED OF BY THE CONTRACTOR AND SHALL BE REPLACED AS DIRECTED BY THE ENGINEER. REPLACEMENT FRAMES AND LIDS WILL BE PAID FOR ACCORDING TO ARTICLE 109.04 OF THE STANDARD SPECIFICATIONS UNLESS A SEPERATE PAY ITEM HAS BEEN PROVIDED.
11. THE ENGINEER SHALL CONTACT PATRICE HARRIS, AREA TRAFFIC FIELD TECHNICIAN, AT PATRICE.HARRIS@ILLINOIS.GOV, A MINIMUM OF TWO (2) WEEKS PRIOR TO THE PLACEMENT OF PERMANENT PAVEMENT MARKINGS.
12. PAVEMENT MARKINGS TAPE, TYPE IV SHALL BE USED FOR SHORT TERM PAVEMENT MARKINGS ON ALL FINAL SURFACES.
13. OVERNIGHT LANE CLOSURES SHALL NOT BE ALLOWED FOR REHABILITATION PROJECTS INVOLVING DAYTIME MILLING AND RESURFACING OPERATIONS AND CLASS D PATCHING UNLESS OTHER CONDITIONS WARRANT EXTENDED LANE CLOSURES AS DETERMINED AND APPROVED IN WRITING BY THE ENGINEER OR AS PROVIDED FOR IN THE CONTRACT SPECIFICATIONS.
14. WHEN THE MILLED PAVEMENT IS OPEN TO TRAFFIC THE MAXIMUM GRADE DIFFERENTIAL BETWEEN PASSES OF THE MILLING MACHINE SHALL NOT EXCEED 1 1/2 INCHES (40MM) WHERE THE SPEED LIMIT IS 40 MPH (80 KM/H) OR LESS AND 1 INCH (25MM) WHERE THE SPEED LIMIT IS GREATER THAN 40 MPH (80 KM/H). WITH WRITTEN APPROVAL OF THE ENGINEER, A MAXIMUM GRADE DIFFERENTIAL OF 3 INCHES (75MM) MAY BE ALLOWED IF THE EDGE OF THE MILLING IS SLOPED A MINIMUM 1:3 (V:H) OR A NOTCHED LONGITUDINAL WEDGE IS USED.
15. THE "ARTERIAL ROAD INFORMATION SIGN (TC-22)" IS APPLICABLE ONLY TO ARTERIAL ROADS AND SHALL NOT BE APPLIED TO EXPRESSWAYS/TOLLWAYS.
16. THE CONTRACTOR SHALL CONTACT THE DISTRICT TRAFFIC CONTROL SUPERVISOR KALPANA KANNAN-HOSADURGA AT KALPANA.KANNAN-HOSADURGA@ILLINOIS.GOV A MINIMUM OF 72 HOURS IN ADVANCE OF BEGINNING WORK.
17. BEFORE BEGINNING ANY WORK, THE CONTRACTOR SHALL RETAIN AND RECORD FOR FUTURE REFERENCE, ALL EXISTING PAVEMENT MARKING LINES (AND RAISED REFLECTIVE PAVEMENT MARKERS) IN ORDER THAT THESE LOCATIONS CAN BE RE-ESTABLISHED FOR STRIPING. EXACT LOCATIONS OF ALL PAVEMENT MARKINGS SHALL BE AS DIRECTED BY THE ENGINEER.
18. GUARDRAIL MARKERS SHALL NOT BE ATTACHED TO TERMINAL SECTIONS.
19. THE CONTRACTOR SHALL SUBMIT ALL DAILY LANE, RAMP AND SHOULDER CLOSURES VIA WWW.IDOTLCS.COM AT LEAST 24 HOURS IN ADVANCE OF ALL DAILY LANE, RAMP AND SHOULDER CLOSURES. THE CONTRACTOR SHALL REQUEST AND GAIN APPROVAL FROM THE ILLINOIS DEPARTMENT OF TRANSPORTATION'S EXPRESSWAY TRAFFIC OPERATIONS ENGINEER AT (847) 705-4151 OR (847) 705-4155.
20. THE CONTRACTOR SHALL CONTACT THE IDOT EXPRESSWAY TRAFFIC CONTROL SUPERVISOR DISTRICT ONE CARLOS AT CARLOS.MUNOZ@ILLINOIS.GOV AT LEAST 72 HOURS BEFORE BEGINNING WORK
21. BUTT JOINTS SHALL BE INSTALLED AT THE ENDS OF ALL RESURFACING (WHERE RESURFACING MEETS EXISTING PAVEMENT) ACCORDING TO THE "BUTT JOINT AND HOT-MIX ASPHALT TAPER DETAILS" SHEET INCLUDED IN THE PLANS, UNLESS OTHERWISE SPECIFIED.
22. CONTRACTOR SHALL MAINTAIN PEDESTRIAN ACCESS AT ALL TIMES DURING CONSTRUCTION.

INDEX OF SHEETS

SHEET NO.	DESCRIPTION
1	TITLE SHEET
2	INDEX OF SHEETS, STATE STANDARDS, AND GENERAL NOTES
3-4	SUMMARY OF QUANTITIES
5	TYPICAL SECTIONS
6	SCHEDULE OF QUANTITIES
7-11	ROADWAY AND PAVEMENT MARKING PLANS
12	DETAILS FOR FRAMES AND LIDS ADJUSTMENT WITH MILLING (BD-08)
13	PAVEMENT PATCHING FOR HMA SURFACED PAVEMENT (BD-22)
14	CURB OR CURB AND GUTTER REMOVAL AND REPLACEMENT (BD-24)
15	BUTT JOINT AND HMA TAPER DETAILS (BD-32)
16	DEPRESSED CURB & GUTTER AND SHOULDER TREATMENT AT TBT TY 1 SPL (BD-34)
17	ENTRANCE AND EXIT RAMP CLOSURE DETAILS (TC-08)
18	TRAFFIC CONTROL DETAILS FOR FREEWAY SINGLE LANE AND MULTI-LANE WEAVE (TC-09)
19	TRAFFIC CONTROL AND PROTECTION FOR SIDE ROADS, INTERSECTIONS, AND DRIVEWAYS (TC-10)
20	TYPICAL APPLICATIONS RAISED REFLECTIVE PAVEMENT MARKERS (SNOW-PLOW RESISTANT) (TC-11)
21	DISTRICT ONE TYPICAL PAVEMENT MARKING (TC-13)
22	SHORT TERM PAVEMENT MARKING LETTERS AND SYMBOLS (TC-16)
23	TRAFFIC CONTROL FOR FREEWAY SHOULDER CLOSURES AND PARTIAL RAMP CLOSURES (TC-17)
24	FREEWAY/EXPRESSWAY SIGNING FOR FLAGGING OPERATIONS AT WORK ZONE OPENINGS (TC-18)
25	ARTERIAL ROAD INFORMATION SIGN (TC-22)
26-27	TYPICAL SUPPLEMENTAL SIGNING AND PAVEMENT MARKINGS TREATMENT FOR RAILROAD CROSSINGS (TC-23)

STATE HIGHWAY STANDARDS

STANDARD NO.	DESCRIPTION
000001-08	STANDARD SYMBOLS, ABBREVIATIONS, AND PATTERNS
424001-11	PERPENDICULAR CURB RAMPS FOR SIDEWALKS
442201-03	CLASS C AND D PATCHES
482001-02	HMA SHOULDER ADJACENT TO FLEXIBLE PAVEMENT
604001-05	FRAME AND LIDS, TYPE 1
606001-08	CONCRETE CURB TYPE B AND COMBINATION CONCRETE CURB AND GUTTER
630001-13	STEEL PLATE BEAM GUARDRAIL
630301-09	SHOULDER WIDENING FOR TYPE 1 (SPECIAL) GUARDRAIL TERMINALS
631011-10	TRAFFIC BARRIER TERMINAL, TYPE 2
635001-02	DELINEATORS
701006-05	OFF-RD OPERATIONS, 2L, 2W, 15' (4.5M) TO 24" (600MM) FROM PAVEMENT EDGE
701011-04	OFF-RD MOVING OPERATIONS, 2L, 2W, DAY ONLY
701201-05	LANE CLOSURE, 2L, 2W, DAY ONLY, FOR SPEEDS ≥ 45 MPH
701301-04	LANE CLOSURE, 2L, 2W, SHORT TIME OPERATIONS
701306-04	LANE CLOSURE, 2L, 2W, SLOW MOVING OPERATIONS DAY ONLY, FOR SPEEDS ≥ 45 MPH
701311-03	LANE CLOSURE, 2L, 2W, SLOW MOVING OPERATIONS DAY ONLY
701400-12	APPROACH TO LANE CLOSURE, FREEWAY/EXPRESSWAY
701401-13	LANE CLOSURE, FREEWAY/EXPRESSWAY
701411-09	LANE CLOSURE, MULTILANE, AT ENTRANCE OR EXIT RAMP FOR SPEEDS ≥ 45 MPH
701428-01	TRAFFIC CONTROL, SETUP AND REMOVAL, FREEWAY/EXPRESSWAY
701801-06	SIDEWALK, CORNER OR CROSSWALK CLOSURE
701901-09	TRAFFIC CONTROL DEVICES
725001-01	OBJECT AND TERMINAL MARKERS
780001-05	TYPICAL PAVEMENT MARKINGS
781001-04	TYPICAL APPLICATIONS RAISED REFLECTIVE PAVEMENT MARKERS
782006-01	GUARDRAIL AND BARRIER WALL REFLECTOR MOUNTING DETAILS

**STATE OF ILLINOIS
DEPARTMENT OF TRANSPORTATION**

INDEX OF SHEETS, STATE HIGHWAY STANDARDS AND GENERAL NOTES

SCALE: SHEET 1 OF 1 SHEETS STA. TO STA.

F.A.P. RTE.	SECTION	COUNTY	TOTAL SHEETS	SHEET NO.
856	FAP 0856 22 RS	WILL	27	2
CONTRACT NO. 62T29				
		ILLINOIS	FED. AID PROJECT	

MODEL: GenNotesSh01 (Sheet)
FILE NAME: c:\pwworking\illinois\085622RS\085622RS.dgn

SUMMARY OF QUANTITIES

US 6
ROADWAY
0005
80% FED
20% STATE

I-55
SAFETY
0021
80% FED
20% STATE

Code No.	Item	Unit	Total Quantity						
20100210	TREE REMOVAL (OVER 15 UNITS DIAMETER)	UNIT	197	197	0				
20101350	TREE PRUNING (OVER 10 INCH DIAMETER)	EACH	5	5	0				
20200100	EARTH EXCAVATION	CU YD	1995	1995	0				
31101400	SUBBASE GRANULAR MATERIAL, TYPE B 6"	SQ YD	5129	5129	0				
40600290	BITUMINOUS MATERIALS (TACK COAT)	POUND	9581	9581	0				
40600370	LONGITUDINAL JOINT SEALANT	FOOT	17958	17958					
40600400	MIXTURE FOR CRACKS, JOINTS, AND FLANGEWAYS	TON	29	29	0				
40600982	HOT-MIX ASPHALT SURFACE REMOVAL - BUTT JOINT	SQ YD	246	246	0				
40605026	POLYMERIZED HOT-MIX ASPHALT SURFACE COURSE, STONE MATRIX 9.5, MIX "F", N80	TON	1886	1886	0				
44000156	HOT-MIX ASPHALT SURFACE REMOVAL, 1 3/4"	SQ YD	19242	19242	0				
44201823	CLASS D PATCHES, TYPE I, 15 INCH	SQ YD	115	115	0				
44201827	CLASS D PATCHES, TYPE II, 15 INCH	SQ YD	200	200	0				
44201831	CLASS D PATCHES, TYPE III, 15 INCH	SQ YD	200	200	0				
44201833	CLASS D PATCHES, TYPE IV, 15 INCH	SQ YD	100	100	0				
48102100	AGGREGATE WEDGE SHOULDER, TYPE B	TON	626	576	50				
48203029	HOT-MIX ASPHALT SHOULDERS, 8"	SQ YD	4098	4098	0				
60252800	CATCH BASINS TO BE RECONSTRUCTED	EACH	1	1	0				
* 63000001	STEEL PLATE BEAM GUARDRAIL, TYPE A, 6 FOOT POSTS	FOOT	387.5	0	387.5				
* 63100045	TRAFFIC BARRIER TERMINAL, TYPE 2	EACH	1	0	1				
* 63100167	TRAFFIC BARRIER TERMINAL, TYPE 1 (SPECIAL) TANGENT	EACH	1	0	1				
* 66900200	NON-SPECIAL WASTE DISPOSAL	CU YD	1995	1995	0				
* 66900530	SOIL DISPOSAL ANALYSIS	EACH	10	10	0				
* 66901001	REGULATED SUBSTANCES PRE-CONSTRUCTION PLAN	L SUM	1	1	0				

SUMMARY OF QUANTITIES

US 6
ROADWAY
0005
80% FED
20% STATE

I-55
SAFETY
0021
80% FED
20% STATE

Code No.	Item	Unit	Total Quantity						
* 66901003	REGULATED SUBSTANCES FINAL CONSTRUCTION REPORT	L SUM	1	1	0				
* 66901006	REGULATED SUBSTANCES MONITORING	CAL DA	10	10	0				
67100100	MOBILIZATION	L SUM	1	0.5	0.5				
70100450	TRAFFIC CONTROL AND PROTECTION, STANDARD 701201	L SUM	1	1	0				
70100460	TRAFFIC CONTROL AND PROTECTION, STANDARD 701306	L SUM	1	1	0				
70102640	TRAFFIC CONTROL AND PROTECTION, STANDARD 701801	L SUM	1	1	0				
70300100	SHORT TERM PAVEMENT MARKING	FOOT	7454	7454	0				
70300150	SHORT TERM PAVEMENT MARKING REMOVAL	SQ FT	2485	2485	0				
70300211	TEMPORARY PAVEMENT MARKING LETTERS AND SYMBOLS - PAINT	SQ FT	123	123	0				
70300221	TEMPORARY PAVEMENT MARKING - LINE 4"- PAINT	FOOT	18853	18853	0				
70300241	TEMPORARY PAVEMENT MARKING - LINE 6"- PAINT	FOOT	60	60	0				
70300281	TEMPORARY PAVEMENT MARKING - LINE 24"- PAINT	FOOT	100	100	0				
* 72501000	TERMINAL MARKER - DIRECT APPLIED	EACH	1	0	1				
* 78000100	THERMOPLASTIC PAVEMENT MARKING - LETTERS AND SYMBOLS	SQ FT	123	123	0				
* 78000200	THERMOPLASTIC PAVEMENT MARKING - LINE 4"	FOOT	18853	18853	0				
* 78000400	THERMOPLASTIC PAVEMENT MARKING - LINE 6"	FOOT	60	60	0				
* 78000650	THERMOPLASTIC PAVEMENT MARKING - LINE 24"	FOOT	100	100	0				
* 78100100	RAISED REFLECTIVE PAVEMENT MARKER	EACH	160	160	0				
* 78200005	GUARDRAIL REFLECTORS, TYPE A	EACH	6	0	6				
78300200	RAISED REFLECTIVE PAVEMENT MARKER REMOVAL	EACH	160	160	0				
78300202	PAVEMENT MARKING REMOVAL - WATER BLASTING	SQ FT	6638	6638	0				
X0327120	WEED CONTROL, NATIVE LANDSCAPE ENHANCEMENT	ACRE	6.2	6.2	0				

*SPECIALTY ITEM

MODEL: SOQ01 (Sheet)
FILE NAME: c:\pwr\work\illinois\0938723\ID127922-shh-SOQ.dgn

USER NAME = ivan.diaz	DESIGNED -	REVISED -
	DRAWN -	REVISED -
PLOT SCALE = \$\$CALE\$	CHECKED -	REVISED -
PLOT DATE = 5/9/2024	DATE -	REVISED -

**STATE OF ILLINOIS
DEPARTMENT OF TRANSPORTATION**

**SUMMARY OF QUANTITIES
US 6 (EAMES ST)(MCCLINTOCK RD TO I-55)**

SCALE: SHEET 1 OF 2 SHEETS STA. TO STA.

F.A.P. RTE.	SECTION	COUNTY	TOTAL SHEETS	SHEET NO.
856	FAP 0856 22 RS	WILL	27	3
ILLINOIS FED. AID PROJECT			CONTRACT NO. 62T29	

SUMMARY OF QUANTITIES

Code No.	Item	Unit	Total Quantity	US 6 ROADWAY 0005	I-55 SAFETY 0021				
				80% FED 20% STATE	80% FED 20% STATE				
X2010350	TREE REMOVAL, ACRES (SPECIAL)	ACRE	6.2	6.2	0				
X2010404	STUMP REMOVAL	EACH	4	4	0				
X2020110	GRADING AND SHAPING SHOULDERS	UNIT	100	93	7				
X4400503	COMBINATION CURB AND GUTTER REMOVAL AND REPLACEMENT GREATER THAN 10 FEET	FOOT	30	30	0				
X6030310	FRAMES AND LIDS TO BE ADJUSTED (SPECIAL)	EACH	2	2	0				
X6700407	ENGINEER'S FIELD OFFICE, TYPE A (D1)	CAL MO	12	6	6				
X7011015	TRAFFIC CONTROL AND PROTECTION (EXPRESSWAYS)	L SUM	1	0	1				
Z0013798	CONSTRUCTION LAYOUT	L SUM	1	0.5	0.5				
Z0030850	TEMPORARY INFORMATION SIGNING	SQ FT	102.8	102.8	0				
Z0048665	RAILROAD PROTECTIVE LIABILITY INSURANCE	L SUM	1	1	0				
X2010516	SELECTIVE CLEARING	UNIT	12.3	12.3	0				

SUMMARY OF QUANTITIES

Code No.	Item	Unit	Total Quantity	US 6 ROADWAY 0005	I-55 SAFETY 0021				
				80% FED 20% STATE	80% FED 20% STATE				

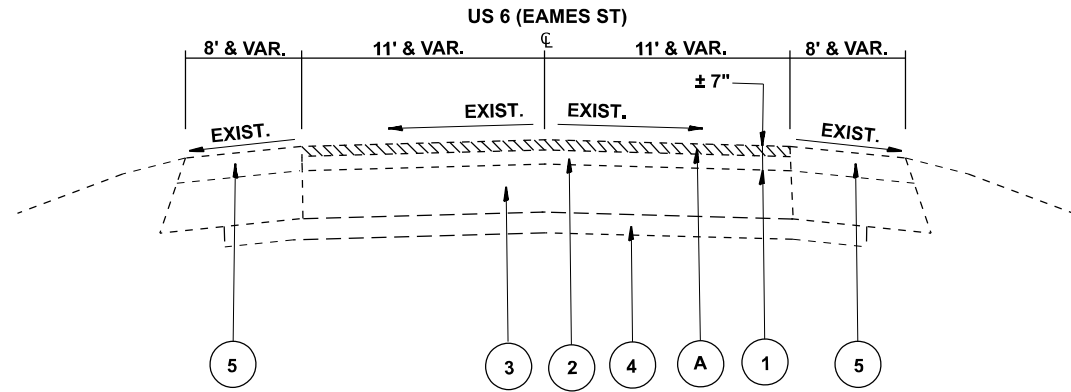
MODEL: SQ002
FILE NAME: c:\pwr\work\pwr\127922\127922-ahh-SQ0.dgn

USER NAME = ivan.diaz	DESIGNED -	REVISED -
DRAWN -	REVISIONS -	
PLOT SCALE = \$\$SCALE\$	CHECKED -	REVISED -
PLOT DATE = 5/9/2024	DATE -	REVISED -

**STATE OF ILLINOIS
DEPARTMENT OF TRANSPORTATION**

SUMMARY OF QUANTITIES			
US 6 (EAMES ST)(MCCLINTOCK RD TO I-55)			
SCALE:	SHEET 2 OF 2 SHEETS	STA.	TO STA.

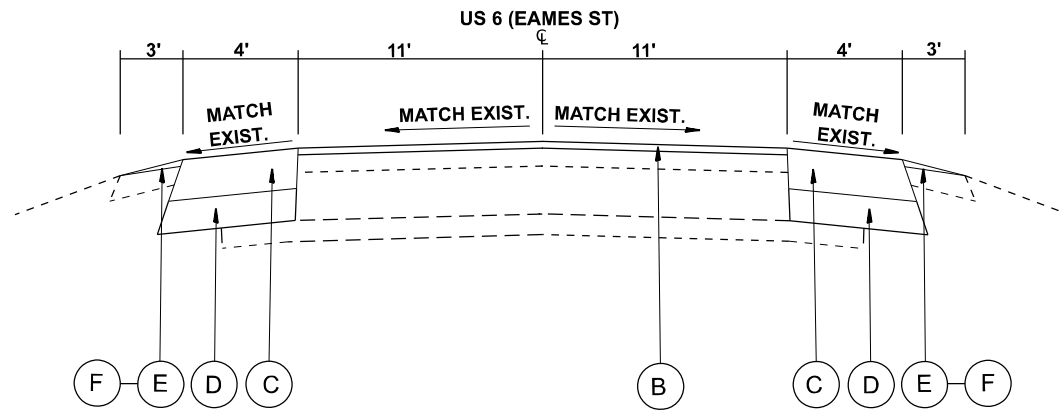
F.A.P RTE.	SECTION	COUNTY	TOTAL SHEETS	SHEET NO.
856	FAP 0856 22 RS	WILL	27	4
CONTRACT NO. 62T29				
ILLINOIS FED. AID PROJECT				



**TYPICAL EXISTING ROADWAY CROSS SECTION
US 6 (EAMES ST)
STATION 49+41 TO 109+27**

LEGEND

- ① EXISTING HOT-MIX ASPHALT PAVEMENT, ± 7"
- ② EXISTING HOT-MIX ASPHALT SURFACE AFTER MILLING, ± 5 1/2"
- ③ EXISTING P.C.C. PAVEMENT, 9"-7"-9"
- ④ EXISTING AGGREGATE SUBGRADE
- ⑤ EXISTING HMA/AGGREGATE SHOULDER
- A PROPOSED HOT-MIX ASPHALT SURFACE REMOVAL, 1 1/2"
- B PROPOSED POLYMERIZED HOT-MIX ASPHALT SURFACE COURSE, STONE MATRIX ASPHALT, 9.5, MIX "F", N80, 1 3/4"
- C PROPOSED HMA SHOULDERS, 8"
- D PROPOSED SUBBASE GRANULAR MATERIAL, TYPE B, 6"
- E PROPOSED AGGREGATE WEDGE SHOULDER, TYPE B
- F PROPOSED GRADING AND SHAPING SHOULDER



**TYPICAL EXISTING ROADWAY CROSS SECTION
US 6 (EAMES ST)
STATION 49+41 TO 109+27**

ROADWAY NOTE:

1. CONTRACTOR SHALL MILL FIRST BEFORE PATCHING.
2. THE LONGITUDINAL JOINT SEALANT SHALL BE PLACED OVER MILLED SURFACE.

NOTE:

1. THE UNIT WEIGHT USED TO CALCULATE ALL HMA SURFACE MIXTURE QUANTITIES IS 112 LBS/SQYD/IN.
2. THE "AC TYPE" FOR POLYMERIZED HMA MIXES SHALL BE "SBS/SBR PG 76-22" AND FOR NON-POLYMERIZED HMA THE "AC TYPE" SHALL BE "PG 64-22" UNLESS MODIFIED BY RECLAIMED MATERIALS SPECIFICATIONS.

MIXTURE REQUIREMENTS		QUALITY MANAGEMENT PROGRAM (QMP)
MIXTURE USES	AIR VOIDS @ Ndes	
SMART OVERLAY & SHOULDER RESURFACING		QCP
POLYMERIZED HOT-MIX ASPHALT SURFACE COURSE, STONE MATRIX ASPHALT, 9.5, MIX "F", N80, 1 3/4"	3.5% AT 80 GYR.	
PATCHING		QC/QA
CLASS D PATCHES (HMA BINDER, IL-19.0), 15"	4% AT 70 GYR.	
HMA SHOULDERS, 8"		QC/QA
HMA BINDER COURSE, IL-19.0, 6 1/4"	4% AT 70 GYR.	
POLYMERIZED HOT-MIX ASPHALT SURFACE COURSE, STONE MATRIX ASPHALT, 9.5, MIX "F", N80, 1 3/4"	3.5% AT 80 GYR.	

QMP Designation: Pay for Performance (PFP); Quality Control/Quality Assurance (QC/QA); Quality Control for Performance (QCP)

MODEL: Typical Sections (Sheet)
FILE NAME: c:\pwworking\dwg\diaz\0838723\127922-shh-typical.dwg

USER NAME = ivan.diaz	DESIGNED -	REVISED -
	DRAWN -	REVISED -
PLOT SCALE = \$\$SCALE\$	CHECKED -	REVISED -
PLOT DATE = 5/8/2024	DATE -	REVISED -

**STATE OF ILLINOIS
DEPARTMENT OF TRANSPORTATION**

**TYPICAL SECTIONS
US 6 (EAMES ST)(MCCLINTOCK RD TO I-55)**

SCALE: SHEET 1 OF 1 SHEETS STA. TO STA.

F.A.P. RTE.	SECTION	COUNTY	TOTAL SHEETS	SHEET NO.
856	FAP 0856 22 RS	WILL	27	5
ILLINOIS				FED. AID PROJECT

CONTRACT NO. 62T29

TREE REMOVAL (OVER 15 UNITS DIAMETER)		STUMP REMOVAL
STATION	QUANTITY	QUANTITY
85+00 L	75	1
87+00 L	25	1
91+00 L	75	1
95+50 L	22	1
TOTAL (UNITS):	197	4

SELECTIVE CLEARING	
STATION	QUANTITY
85+00 L	3.1
87+00 L	1.7
91+00 L	2.4
104+00 L	5.1
TOTAL (UNITS):	12.3

NOTE:
 CONTACT THE IDOT ROADSIDE DEVELOPMENT UNIT
 AT 847-705-4171 AT LEAST 2 WEEKS PRIOR TO
 BEGINNING LANDSCAPE AND FORESTRY WORK FOR
 LAYOUT.

TREE REMOVAL, ACRES (SPECIAL)	
STATION	QUANTITY
49+41 to 59+00 L	1.40
66+20 to 67+50 L	0.05
63+00 to 65+50 R	0.11
67+80 to 69+00 R	0.06
71+50 to 79+00 L	0.80
83+50 to 84+75 L	0.09
83+00 to 111+00 R	3.63
109+00 to 109+26 L	0.02
TOTAL (ACRE):	6.16

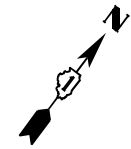
MODEL: Schedule01 [Sheet]
 FILE NAME: c:\p\work\wv\dot\idiaz\id0938723\127922-shs-schedule.dgn

USER NAME = ivan.diaz	DESIGNED -	REVISED -
	DRAWN -	REVISED -
PLOT SCALE = \$SCALE\$	CHECKED -	REVISED -
PLOT DATE = 5/7/2024	DATE -	REVISED -

**STATE OF ILLINOIS
 DEPARTMENT OF TRANSPORTATION**

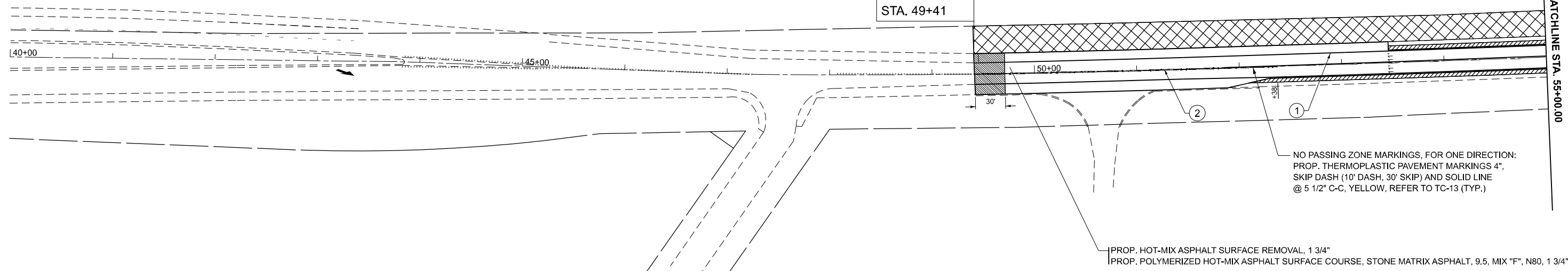
SCHEDULE OF QUANTITIES	
US 6 (EAMES ST)(MCLINTOCK RD TO I-55)	
SCALE:	SHEET OF 1 SHEETS STA. TO STA.

F.A.P. RTE.	SECTION	COUNTY	TOTAL SHEETS	SHEET NO.
856	FAP 0856 22 RS	WILL	27	6
			CONTRACT NO. 62T29	
		ILLINOIS FED. AID PROJECT		



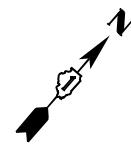
U.S. RTE. 6 (EAMES ST.)

PROJECT
BEGINS
STA. 49+41



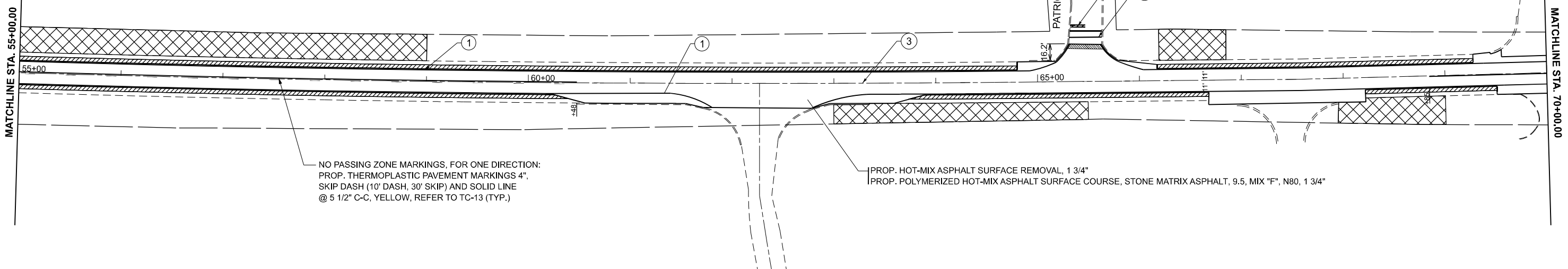
ROADWAY LEGEND

- PROP. HMA SURFACE REMOVAL - BUTT JOINT, 4.5 FT (TYP)
- PROP. HMA SHOULDERS, 8"
- PROP. TREE REMOVAL, ACRES (SPECIAL) & WEED CONTROL, NATIVE LANDSCAPE ENHANCEMENT



U.S. RTE. 6 (EAMES ST.)

PATRICIA LN.



MODEL: I:\S6-RD\WY03 [Sheet]
FILE NAME: c:\p\work\wy03\plan.dgn

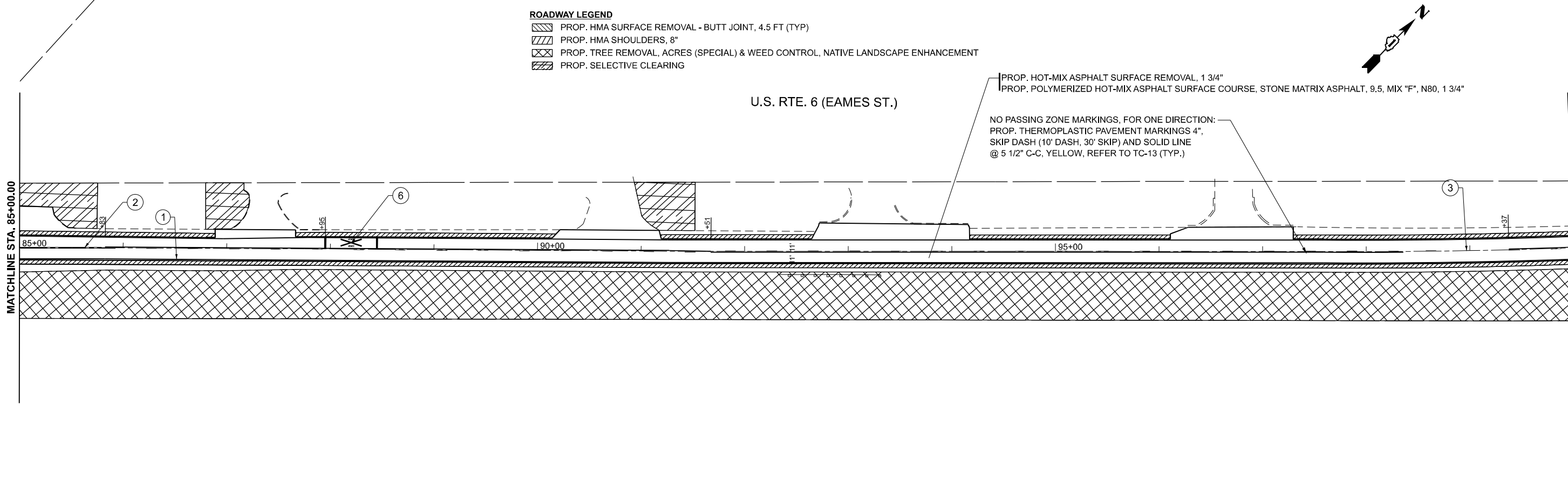
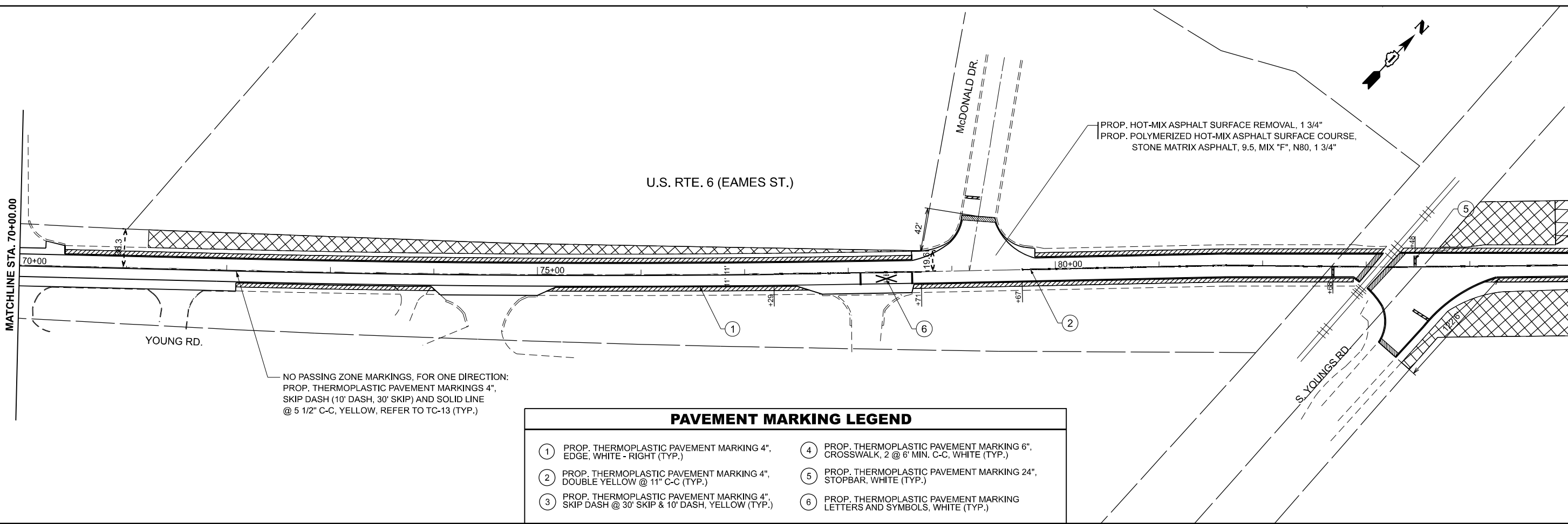
USER NAME = ivan.diaz	DESIGNED -	REVISED -
	DRAWN -	REVISED -
PLOT SCALE = \$SCALE\$	CHECKED -	REVISED -
PLOT DATE = 5/30/2024	DATE -	REVISED -

**STATE OF ILLINOIS
DEPARTMENT OF TRANSPORTATION**

**ROADWAY PLAN
US 6 (EAMES ST)(MCCLINTOCK RD TO I-55)**

SCALE: 1"=50' SHEET 1 OF 5 SHEETS STA. 40+00.00 TO STA. 70+00.00

F.A.P. RTE.	SECTION	COUNTY	TOTAL SHEETS	SHEET NO.
856	FAP 0856 22 RS	WILL	27	7
CONTRACT NO. 62T29			ILLINOIS FED. AID PROJECT	



MODEL: I:\S6-RD\WY05 [Sheet]
FILE NAME: c:\p\work\w05\di\di\0838723\127922-shh-plan.dgn

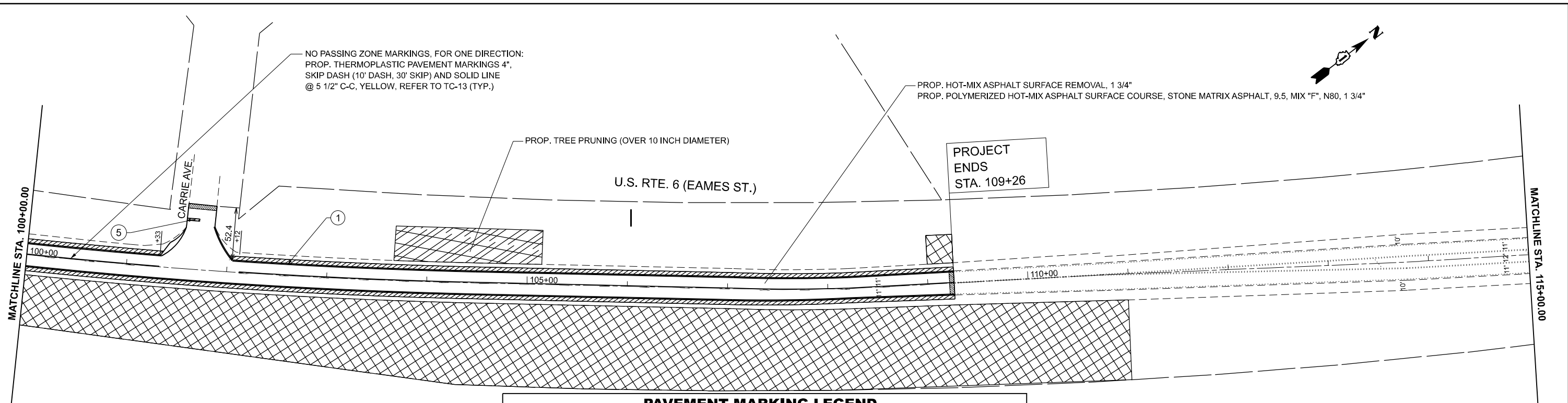
USER NAME	= ivan.diaz	DESIGNED	-	REVISED	-
DRAWN	-	CHECKED	-	REVISED	-
PLOT SCALE	= \$SCALE\$	DATE	-	REVISED	-
PLOT DATE	= 5/30/2024				

STATE OF ILLINOIS
DEPARTMENT OF TRANSPORTATION

ROADWAY PLAN
US 6 (EAMES ST)(MCCLINTOCK RD TO I-55)

SCALE: 1"=50' SHEET OF 5 SHEETS STA. 70+00.00 TO STA. 100+00.00

F.A.P. RTE.	SECTION	COUNTY	TOTAL SHEETS	SHEET NO.
856	FAP 0856 22 RS	WILL	27	8
CONTRACT NO. 62T29			ILLINOIS FED. AID PROJECT	

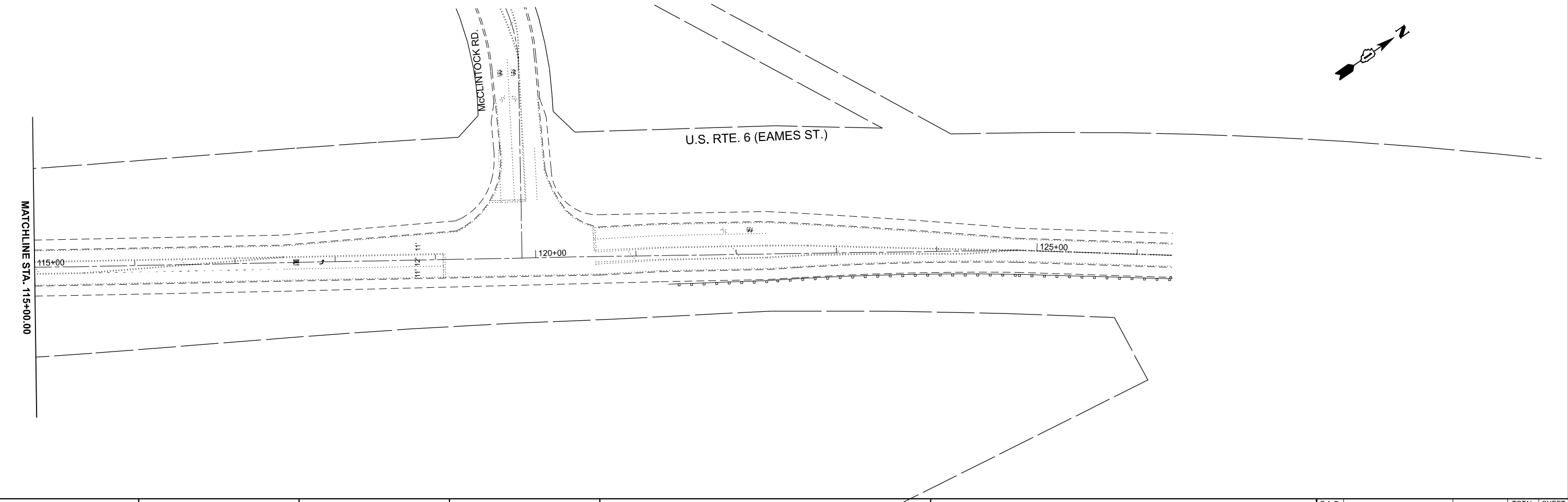


ROADWAY LEGEND

- PROP. HMA SURFACE REMOVAL - BUTT JOINT, 4.5 FT (TYP)
- PROP. HMA SHOULDERS, 8"
- PROP. TREE REMOVAL, ACRES (SPECIAL) & WEED CONTROL, NATIVE LANDSCAPE ENHANCEMENT
- PROP. SELECTIVE CLEARING

PAVEMENT MARKING LEGEND

- | | |
|---|--|
| <ul style="list-style-type: none"> ① PROP. THERMOPLASTIC PAVEMENT MARKING 4", EDGE, WHITE - RIGHT (TYP.) ② PROP. THERMOPLASTIC PAVEMENT MARKING 4", DOUBLE YELLOW @ 11" C-C (TYP.) ③ PROP. THERMOPLASTIC PAVEMENT MARKING 4", SKIP DASH @ 30' SKIP & 10' DASH, YELLOW (TYP.) | <ul style="list-style-type: none"> ④ PROP. THERMOPLASTIC PAVEMENT MARKING 6", CROSSWALK, 2 @ 6' MIN. C-C, WHITE (TYP.) ⑤ PROP. THERMOPLASTIC PAVEMENT MARKING 24", STOPBAR, WHITE (TYP.) ⑥ PROP. THERMOPLASTIC PAVEMENT MARKING LETTERS AND SYMBOLS, WHITE (TYP.) |
|---|--|



MODEL: I:\S6-RD\WY07 (Sheet)
 FILE NAME: c:\p\work\wv\stodiazia\0838723\127922-shr-plan.dgn

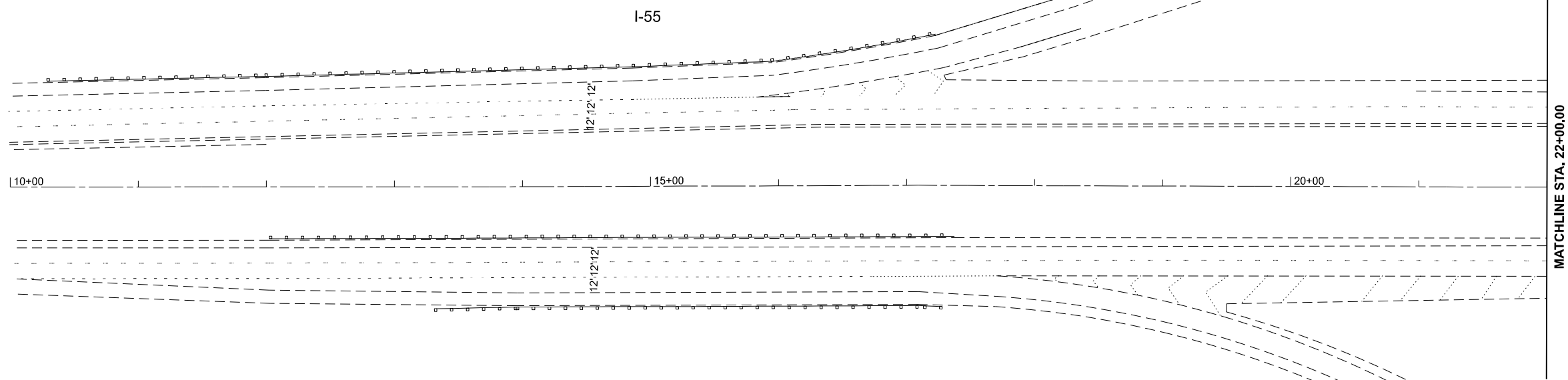
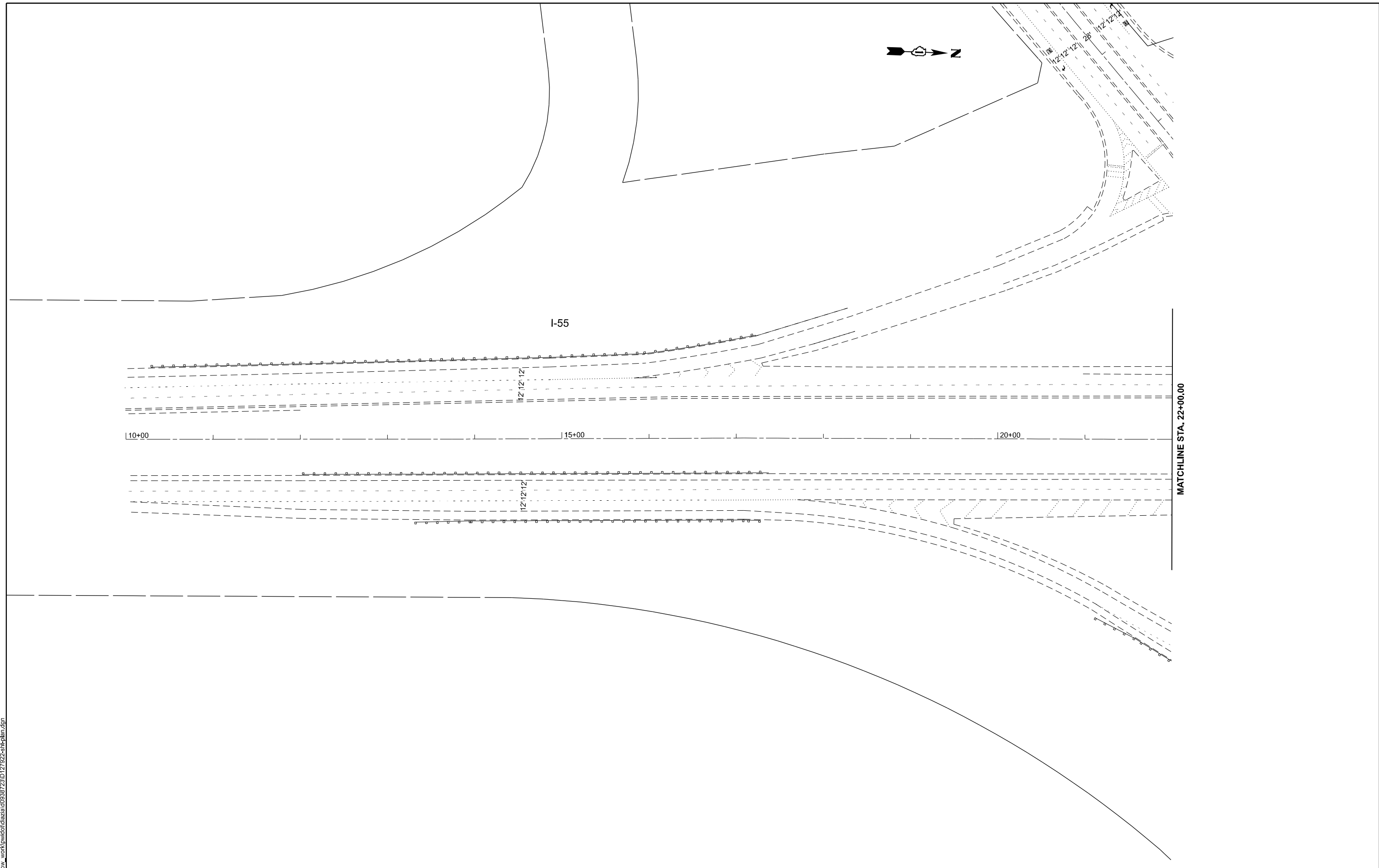
USER NAME = ivan.diaz	DESIGNED -	REVISED -
DRAWN -	REVISOR -	
PLOT SCALE = \$SCALE\$	CHECKED -	REVISED -
PLOT DATE = 5/30/2024	DATE -	REVISED -

STATE OF ILLINOIS
DEPARTMENT OF TRANSPORTATION

ROADWAY PLAN			
US 6 (EAMES ST)(MCCLINTOCK RD TO I-55)			
SCALE: 1"=50'	SHEET	OF 5 SHEETS	TO STA. 130+00.00

F.A.P. RTE.	SECTION	COUNTY	TOTAL SHEETS	SHEET NO.
856	FAP 0856 22 RS	WILL	27	9
CONTRACT NO. 62T29				
ILLINOIS FED. AID PROJECT				

MODEL: I:\S6-RD\WY09-1\Sheet1
 FILE NAME: c:\p\work\wtd\idiaz\id0938723\ID127922-shh-plan.dgn



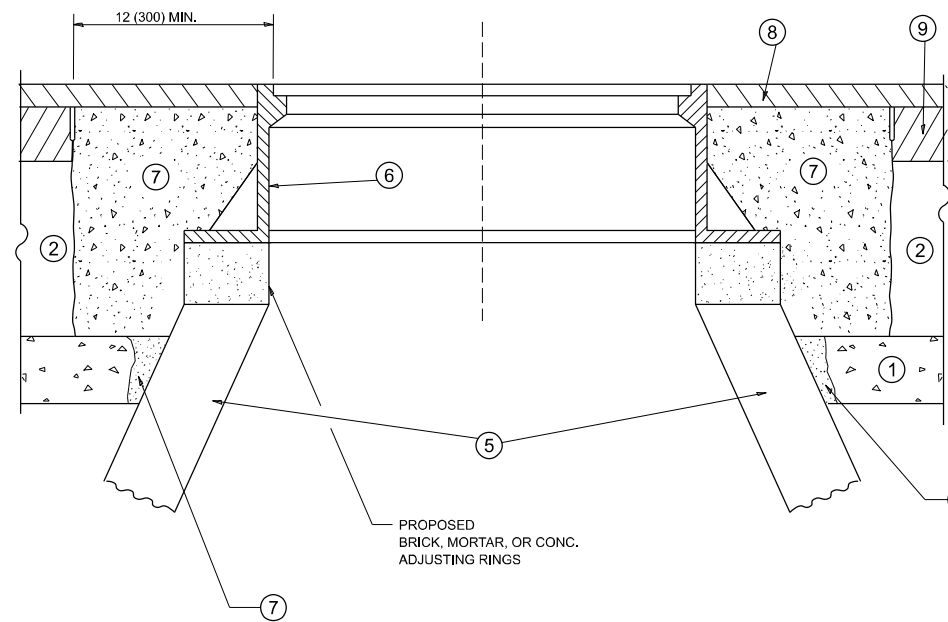
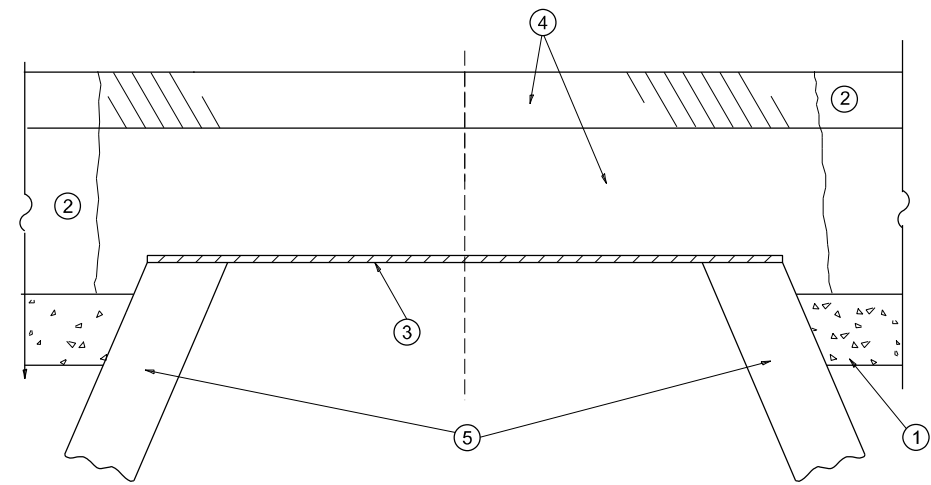
USER NAME = ivan.diaz	DESIGNED -	REVISED -
	DRAWN -	REVISED -
PLOT SCALE = \$SCALE\$	CHECKED -	REVISED -
PLOT DATE = 5/9/2024	DATE -	REVISED -

**STATE OF ILLINOIS
 DEPARTMENT OF TRANSPORTATION**

**ROADWAY PLAN
 US 6 (EAMES ST)(MCCLINTOCK RD TO I-55)**

SCALE: 1"=50' SHEET OF 5 SHEETS STA. 7+00.00 TO STA. 22+00.00

F.A.P. RTE. 856	SECTION FAP 0856 22 RS	COUNTY WILL	TOTAL SHEETS 27	SHEET NO. 10
ILLINOIS FED. AID PROJECT			CONTRACT NO. 62T29	



**DETAILS FOR FRAMES AND LIDS ADJUSTMENT
WITH MILLING**

NOTES

- EXISTING BROKEN FRAMES AND LIDS SHALL BE REMOVED AND DISPOSED OF BY THE CONTRACTOR AND SHALL BE REPLACED AS DIRECTED BY THE ENGINEER. REPLACEMENT FRAMES AND LIDS WILL BE PAID FOR IN ACCORDANCE WITH ARTICLE 109.04 OF THE STANDARD SPECIFICATIONS UNLESS A SEPARATE PAY ITEM HAS BEEN PROVIDED.
- IF THE EXISTING LIDS ARE OPEN, THE FRAME WILL BE ADJUSTED TO THE ELEVATION OF THE MILLED PAVEMENT SURFACE PRIOR TO THE MILLING OPERATION. THE FRAME WILL NOT BE REMOVED AND COVERED BY THE METAL PLATE.
- CITY OF CHICAGO CASTINGS ARE THE PROPERTY OF THE CITY AND THE CONTRACTOR SHALL NOTIFY THE CITY FOR REMOVAL AND DISPOSITION OF THE CASTINGS.
- THE METAL PLATE USED TO COVER THE STRUCTURE SHALL REMAIN THE PROPERTY OF THE CONTRACTOR.
- THE CONTRACTOR SHALL REMOVE ALL TRAFFIC CONTROL DEVICES BY THE END OF EACH WORK SHIFT.

CONSTRUCTION PROCEDURES

STAGE 1 (BEFORE PAVEMENT MILLING)

- REMOVE A MINIMUM OF 12 (300) OF THE PAVEMENT FROM AROUND THE STRUCTURE.
- REMOVE THE EXISTING FRAME AND LID FROM THE STRUCTURE.
- COVER THE STRUCTURE OPENING WITH A 36 (900) DIAMETER METAL PLATE.
- BACKFILL WITH CRUSHED STONE AND HMA SURFACE MIX APPROVED BY THE ENGINEER. (MIN. 3 (80) HMA TO REMAIN AFTER MILLING).

STAGE 2 (AFTER PAVEMENT MILLING)

- REMOVE THE HMA SURFACE MIX AND CRUSHED STONE.
- INSTALL THE FRAME AND LID; ADJUST THE FRAME TO ITS FINAL SURFACE ELEVATION.
- THE SURROUNDING SPACE SHALL BE FILLED WITH CLASS PP-2* CONCRETE TO THE ELEVATION OF THE SURFACE OF THE EXISTING BASE COURSE OR THE BINDER COURSE.

* UNLESS OTHERWISE SPECIFIED IN THE PLANS.

THE PROCEDURE EXPLAINED ABOVE SHALL CONFORM TO THE APPLICABLE PORTIONS OF SECTIONS 353, 406, 602, AND 603 OF THE STANDARD SPECIFICATIONS EXCEPT THAT "THE CONTRACTOR SHALL ADJUST THE STRUCTURES TO THE FINISHED PAVEMENT ELEVATION NO MORE THAN 5 CALENDAR DAYS PRIOR TO PLACEMENT OF THE FINAL LIFT OF SURFACE UNLESS APPROVED BY THE ENGINEER."

LEGEND

- | | |
|--|-------------------------------|
| ① SUB-BASE GRANULAR MATERIAL | ⑥ FRAME AND LID (SEE NOTES) |
| ② EXISTING PAVEMENT | ⑦ CLASS PP-2* CONCRETE |
| ③ 36 (900) DIAMETER METAL PLATE | ⑧ PROPOSED HMA SURFACE COURSE |
| ④ PROPOSED CRUSHED STONE AND HMA SURFACE MIX | ⑨ PROPOSED HMA BINDER COURSE |
| ⑤ EXISTING STRUCTURE | |

LOCATION OF STRUCTURES

THE CONTRACTOR WILL BE REQUIRED TO KEEP A RECORD OF THE LOCATIONS OF THE BURIED STRUCTURES ACCORDING TO THE STATION AND DISTANCE LEFT OR RIGHT OF THE CENTERLINE OF PAVEMENT. UPON COMPLETION OF THE WORK, THE CONTRACTOR WILL DELIVER THE RECORD TO THE ENGINEER.

BASIS OF PAYMENT

- REMOVING FRAMES AND LIDS ON DRAINAGE AND UTILITY STRUCTURES IN THE PAVEMENT PRIOR TO MILLING, AND ADJUSTING TO FINAL GRADE PRIOR TO PLACING THE SURFACE COURSE, WILL BE PAID FOR AT THE CONTRACT UNIT PRICE EACH FOR "FRAMES AND LIDS TO BE ADJUSTED (SPECIAL)."
- THIS WORK WILL NOT BE PAID FOR WHEN DRAINAGE AND UTILITY STRUCTURES ARE SPECIFIED FOR PAYMENT AS STRUCTURE RECONSTRUCTION.
- NEW FRAMES AND LIDS, WHEN SPECIFIED, WILL BE PAID FOR SEPARATELY.
- WHEN STRUCTURES ARE TO BE ADJUSTED OR RECONSTRUCTED, THE LOWERING AND RAISING OF THE FRAMES AND LIDS WILL NOT BE PAID FOR SEPARATELY BUT WILL BE INCLUDED IN THE COST OF THE CORRESPONDING PAY ITEM.

ALL DIMENSIONS ARE IN INCHES (MILLIMETERS) UNLESS OTHERWISE SHOWN

MODEL: BD 8 (Sheet)
FILE NAME: c:\p\work\wv\hondoliaz\0938723\0127922-shh-Dls\lids.dgn

USER NAME = ivan.diaz	DESIGNED - R. SHAH	REVISED - R. BORO 03-09-11
PLOT SCALE = \$SCALE\$	DRAWN -	REVISED - R. BORO 12-06-11
PLOT DATE = 5/9/2024	CHECKED -	REVISED - K. SMITH 11-18-22
	DATE - 10-25-94	REVISED - K. SMITH 09-15-23

**STATE OF ILLINOIS
DEPARTMENT OF TRANSPORTATION**

**DETAILS FOR
FRAMES AND LIDS ADJUSTMENT WITH MILLING**

SCALE: NONE SHEET 1 OF 1 SHEETS STA. TO STA.

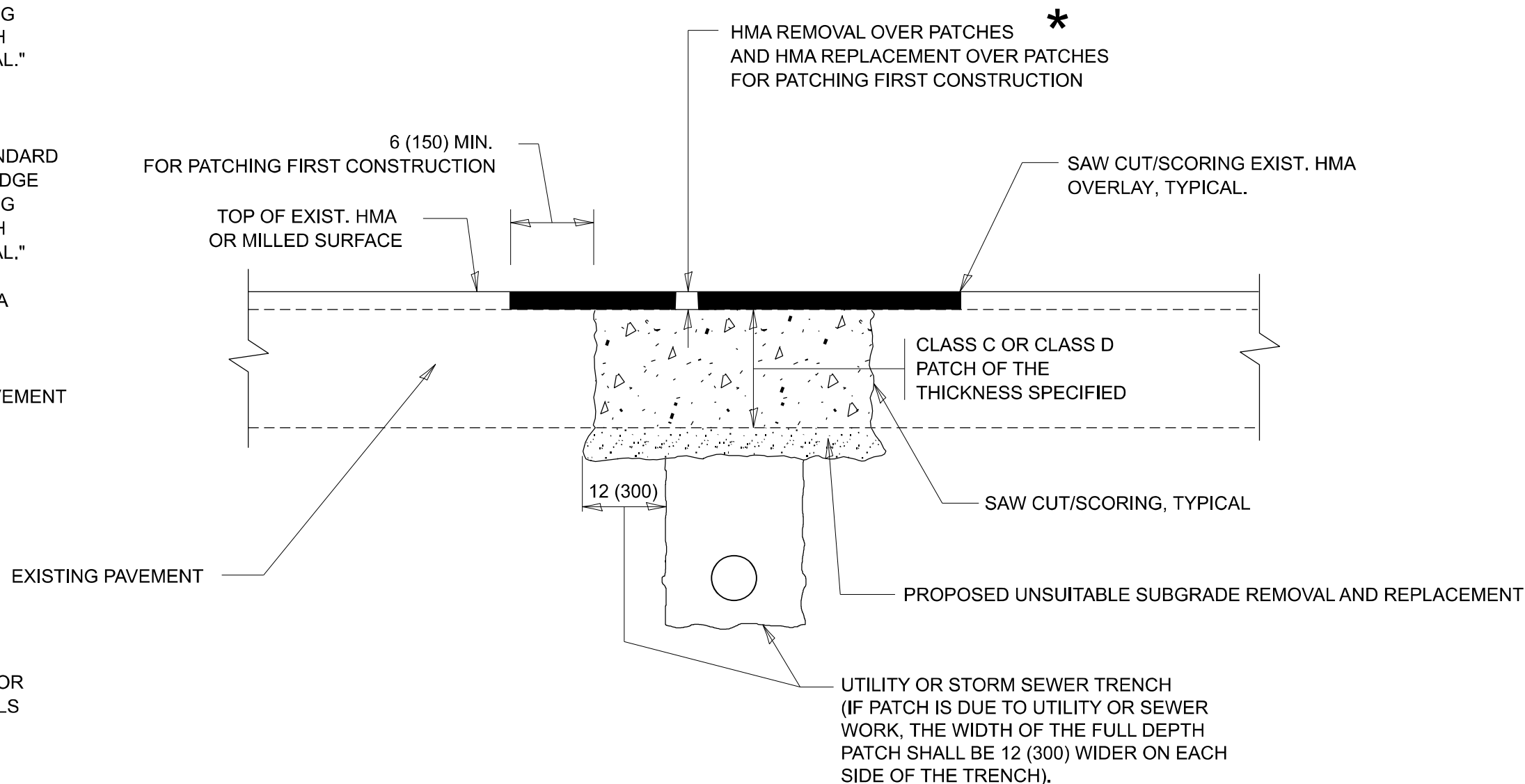
F.A.P. RTE.	SECTION	COUNTY	TOTAL SHEETS	SHEET NO.
856	FAP 0856 22 RS	WILL	27	12
BD600-03 (BD-08)			CONTRACT NO. 62T29	
ILLINOIS FED. AID PROJECT				

METHOD OF MEASUREMENT

REFER TO SECTION 442 OF THE STANDARD SPECIFICATIONS FOR ROAD AND BRIDGE CONSTRUCTION AND THE RECURRING SPECIAL PROVISION "PATCHING WITH HOT-MIX ASPHALT OVERLAY REMOVAL."

BASIS OF PAYMENT

1. REFER TO SECTION 442 OF THE STANDARD SPECIFICATIONS FOR ROAD AND BRIDGE CONSTRUCTION AND THE RECURRING SPECIAL PROVISION "PATCHING WITH HOT-MIX ASPHALT OVERLAY REMOVAL."
2. SAW CUT/SCORING OF EXISTING HMA OVERLAY IS INCLUDED IN THE COST OF PAVEMENT PATCHING.
3. SAW CUT/SCORING OF EXISTING PAVEMENT IS INCLUDED IN THE COST OF PAVEMENT PATCHING.



* SEE TYPICAL SECTIONS FOR THICKNESS AND MATERIALS

SEQUENCE OF CONSTRUCTION (PATCHING FIRST)

1. REMOVE THE EXISTING HMA MATERIAL OVER THE AREA TO BE PATCHED.
2. REMOVE AND REPLACE WITH CLASS C OR D PATCH.
3. REPLACE HMA MATERIAL OVER THE AREA TO BE PATCHED.

SEQUENCE OF CONSTRUCTION (MILLING FIRST)

1. MILL HMA FIRST IF THERE IS AT LEAST 4 1/2 INCHES OR MORE OF HMA MATERIAL ON TOP OF THE EXISTING PAVEMENT OR IF THE PAVEMENT IS FULL DEPTH HMA. A MINIMUM OF 2 INCHES OF HMA MATERIAL SHALL BE IN PLACE AFTER MILLING.
2. REMOVE AND REPLACE WITH FULL DEPTH CLASS D PATCHES TO TOP OF MILLED SURFACE.

ALL DIMENSIONS ARE IN INCHES (MILLIMETERS) UNLESS OTHERWISE SHOWN.

MODEL: BD 22 (Sheet)
FILE NAME: c:\p\work\pav\bd22\127922-shh-Dls\Std.dgn

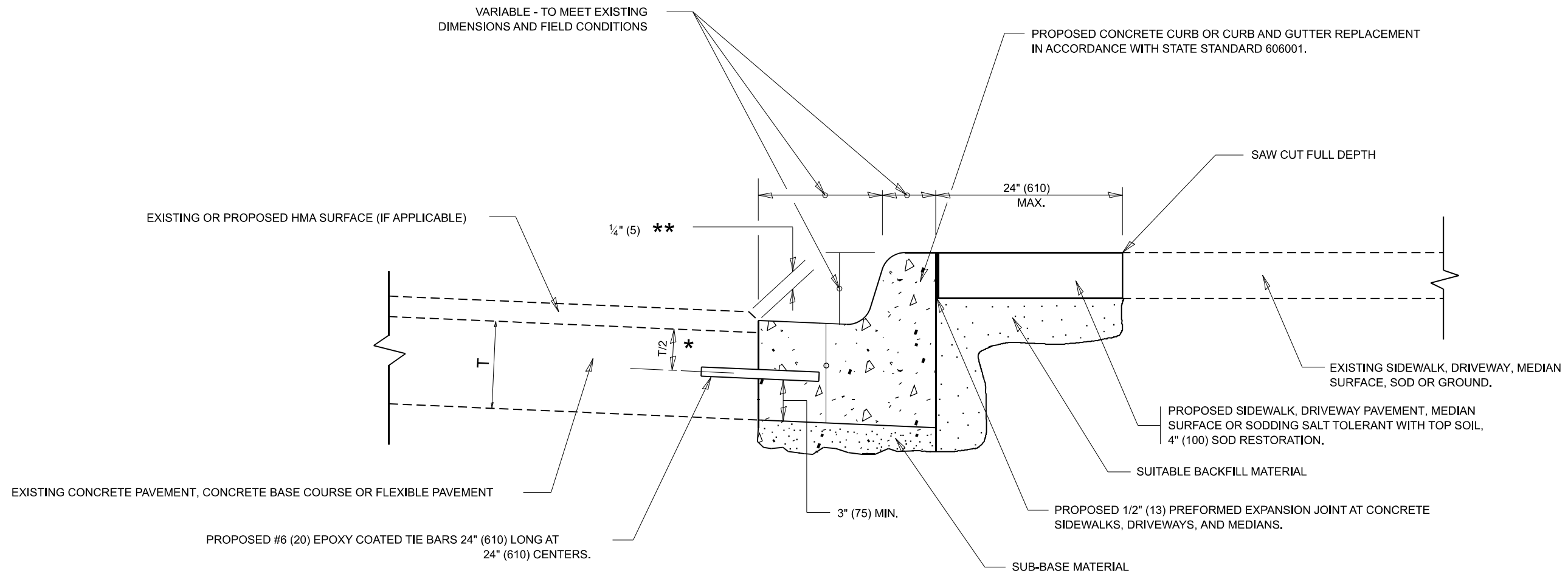
USER NAME = ivan.diaz	DESIGNED - R. SHAH	REVISED - R. BORO 01-01-07
PLOT SCALE = \$SCALE\$	DRAWN -	REVISED - R. BORO 09-04-07
PLOT DATE = 5/9/2024	CHECKED -	REVISED - K. ENG 10-27-08
	DATE - 10-25-94	REVISED - K. SMITH 11-18-22

STATE OF ILLINOIS
DEPARTMENT OF TRANSPORTATION

PAVEMENT PATCHING FOR
HMA SURFACED PAVEMENT

SCALE: NONE SHEET 1 OF 1 SHEETS STA. TO STA.

F.A.P. RTE.	SECTION	COUNTY	TOTAL SHEETS	SHEET NO.
856	FAP 0856 22 RS	WILL	27	13
BD400-04 (BD-22)			CONTRACT NO. 62T29	
ILLINOIS FED. AID PROJECT				



- * 3" (75) MINIMUM FROM TOP AND BOTTOM OF THE CONCRETE PAVEMENT OR BASE COURSE.
- ** IF THE FINAL SURFACE OF THE PAVEMENT IS CONCRETE, THE GUTTER IS TO BE FLUSH WITH THE PAVEMENT.

CURB OR CURB AND GUTTER REMOVAL AND REPLACEMENT

ALL DIMENSIONS ARE IN INCHES (MILLIMETERS)
UNLESS OTHERWISE SHOWN.

MODEL: BD 24 (Sheet)
FILE NAME: c:\p\work\pav\bd24\bd24.dwg

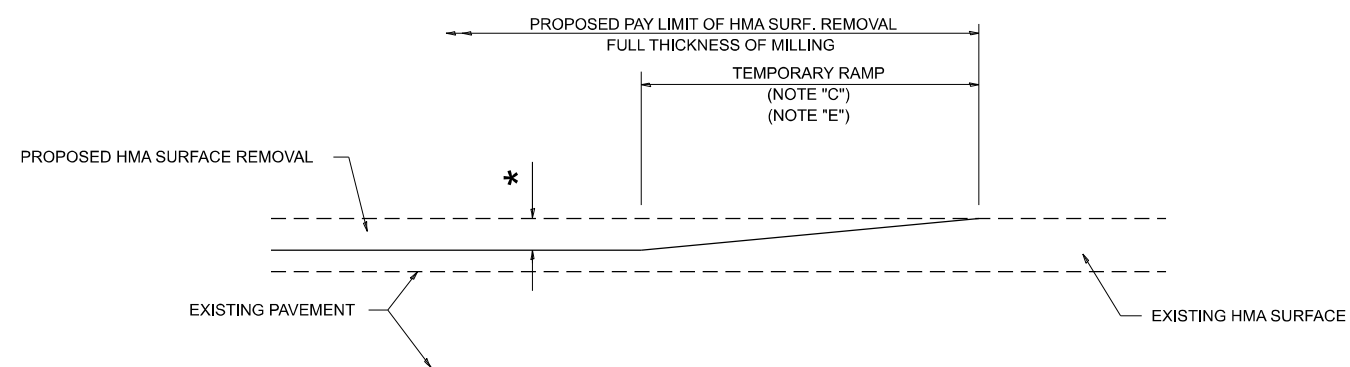
USER NAME = ivan.diaz	DESIGNED - A. HOUSEH	REVISED - A. ABBAS 03-21-97
	DRAWN -	REVISED - M. GOMEZ 01-22-01
PLOT SCALE = \$SCALE\$	CHECKED -	REVISED - R. BORO 12-15-09
PLOT DATE = 5/7/2024	DATE - 03-11-94	REVISED - K. SMITH 07-11-19

**STATE OF ILLINOIS
DEPARTMENT OF TRANSPORTATION**

**CURB OR CURB AND GUTTER
REMOVAL AND REPLACEMENT**

SCALE: NONE SHEET 1 OF 1 SHEETS STA. TO STA.

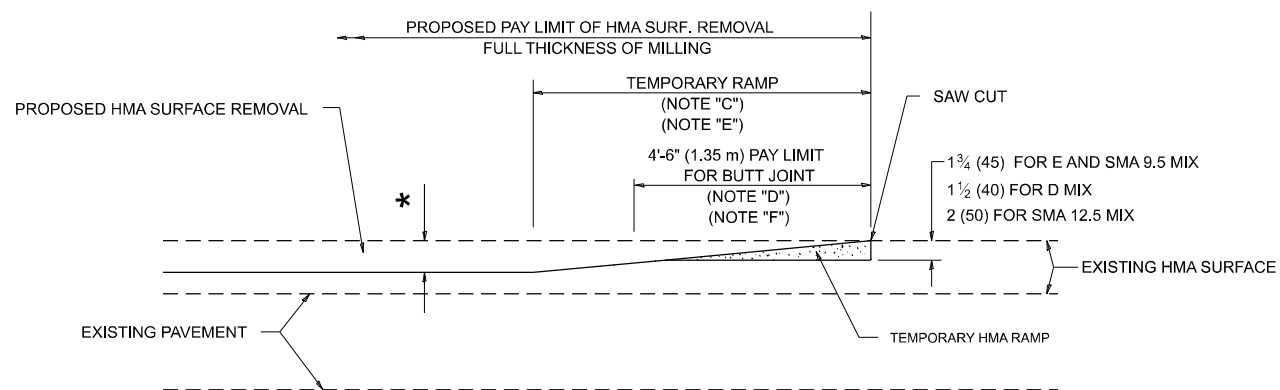
F.A.P. RTE.	SECTION	COUNTY	TOTAL SHEETS	SHEET NO.
856	FAP 0856 22 RS	WILL	27	14
BD600-06 (BD-24)			CONTRACT NO. 62T29	
ILLINOIS FED. AID PROJECT				



MILLED TEMPORARY RAMP

(FOR BUTT JOINT AND HMA TAPER SEE DETAIL BELOW)

OPTION 1

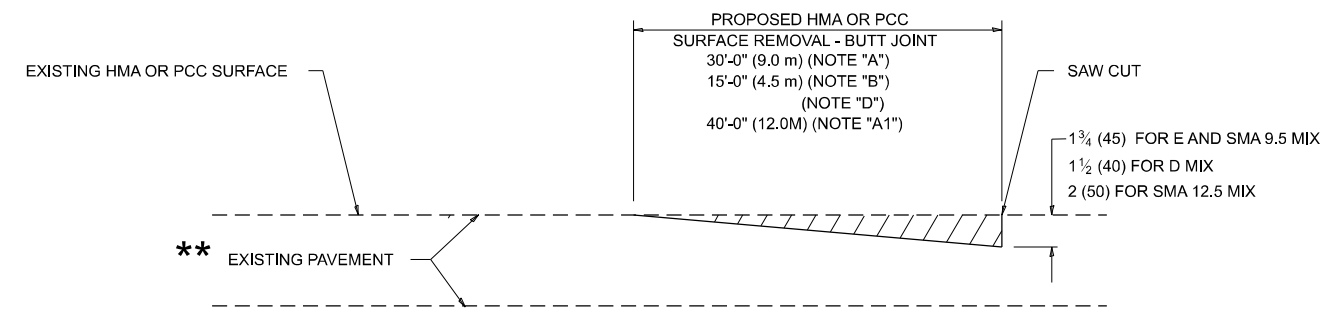


HMA CONSTRUCTED TEMPORARY RAMP

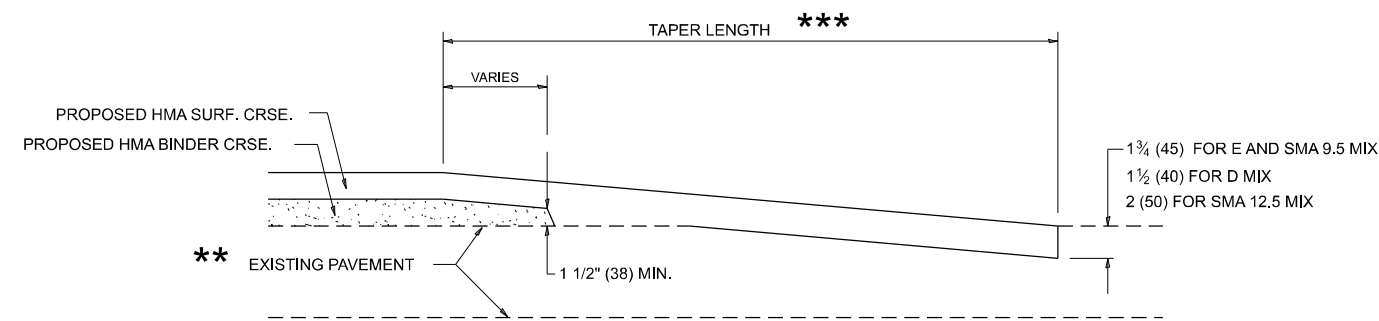
(FOR BUTT JOINT AND HMA TAPER SEE DETAIL BELOW)

OPTION 2

TYPICAL TEMPORARY RAMP



BUTT JOINT DETAIL



HMA TAPER DETAIL

TYPICAL BUTT JOINT AND HMA TAPER FOR RESURFACING ONLY

*** PC CONCRETE, HMA OR HMA RESURFACED PAVEMENT.

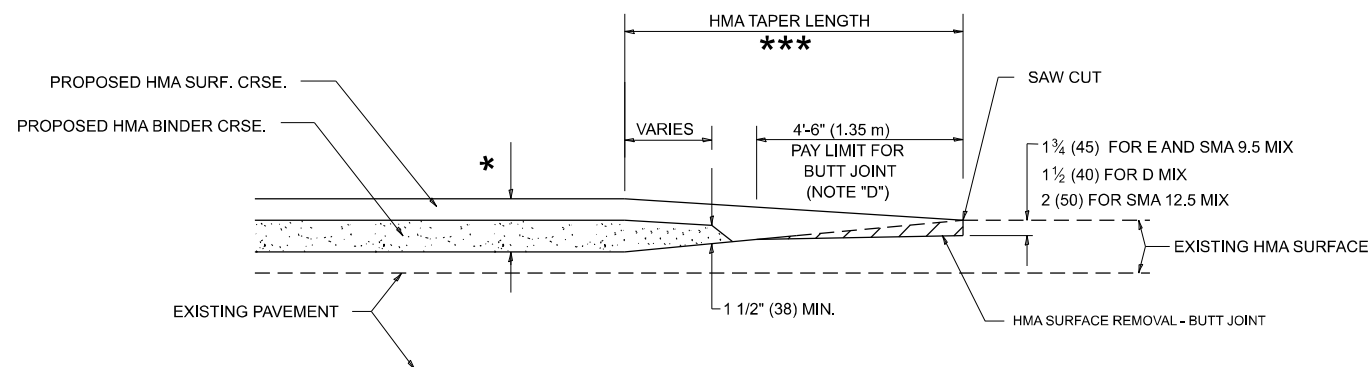
GENERAL NOTES

- A. MAINLINE ARTERIAL ROADWAYS AND MAJOR SIDE ROADS.
- A1. INTERSTATES
- B. MINOR SIDE ROADS.
- C. THE TEMP. RAMP SHALL BE CONSTRUCTED IMMEDIATELY UPON REMOVAL OF THE EXISTING HMA SURFACE.
- D. THE BUTT JOINT SHALL BE CONSTRUCTED IMMEDIATELY PRIOR TO PLACING THE PROPOSED HMA COURSES.
- E. TAPER THE TEMP. RAMP AT A RATE OF 3' - 4" (1.02m) PER 1 INCH (25 mm) OF MILLING THICKNESS.
 - * SEE TYPICAL SECTIONS FOR MILLING THICKNESS.
- F. SEE ARTICLE 406.08 AND 406.14 OF THE STANDARD SPECIFICATIONS FOR "HMA AND/OR PCC SURFACE REMOVAL, BUTT JOINT".
 - *** 20'-0" (6.1 m) PER 1 (25) RESURFACING (NOTE "A")
 - 10'-0" (3.0 m) PER 1 (25) RESURFACING (NOTE "B")

BASIS OF PAYMENT

- 1. THE BUTT JOINT WILL BE PAID FOR AT THE CONTRACT UNIT PRICE PER SQUARE YARD (SQUARE METER) FOR "HOT-MIX ASPHALT SURFACE REMOVAL - BUTT JOINT" OR FOR "PORTLAND CEMENT CONCRETE SURFACE REMOVAL - BUTT JOINT".
- 2. THE TEMPORARY RAMP AND SAW CUT SHALL BE INCLUDED IN THE UNIT COST FOR HMA OR PCC SURFACE REMOVAL-BUTT JOINT.

ALL DIMENSIONS ARE IN INCHES (MILLIMETERS) UNLESS OTHERWISE SHOWN.



BUTT JOINT AND HMA TAPER

TYPICAL BUTT JOINT AND HMA TAPER FOR MILLING AND RESURFACING

MODEL: BD 32 (Sheet)
FILE NAME: c:\p\work\pwworkdir\diaz\0938723\127922-shh-DiaS\tds.dgn

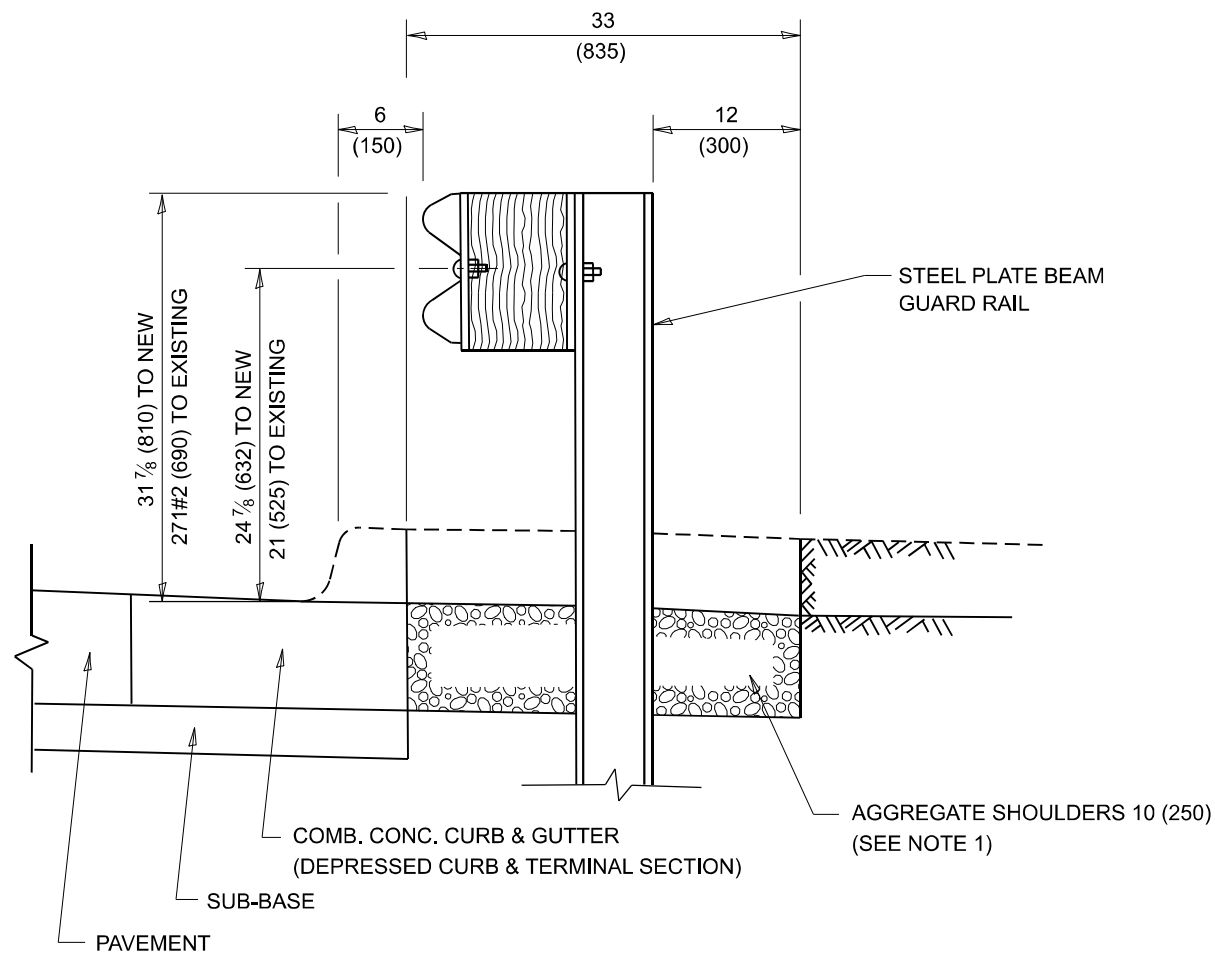
USER NAME = ivan.diaz	DESIGNED - M. DE YONG	REVISED - A. ABBAS 03-21-97
PLOT SCALE = \$SCALE\$	DRAWN -	REVISED - M. GOMEZ 04-06-01
PLOT DATE = 5/9/2024	CHECKED -	REVISED - R. BORO 01-01-07
	DATE - 06-13-90	REVISED - K. SMITH 11-18-22

STATE OF ILLINOIS
DEPARTMENT OF TRANSPORTATION

BUTT JOINT AND HMA TAPER DETAILS

SCALE: NONE SHEET 1 OF 1 SHEETS STA. TO STA.

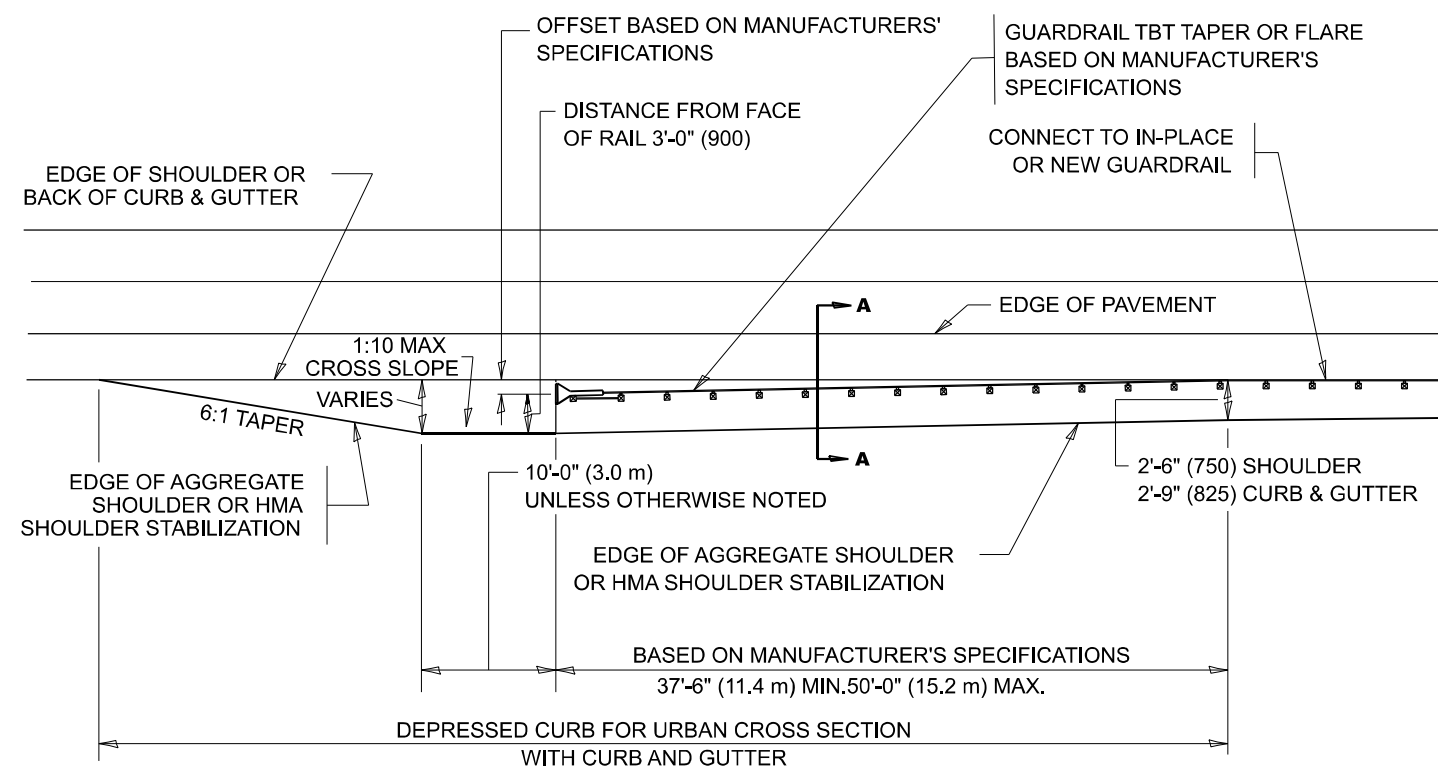
F.A.P RTE.	SECTION	COUNTY	TOTAL SHEETS	SHEET NO.
856	FAP 0856 22 RS	WILL	27	15
BD400-05 BD-32		CONTRACT NO. 62T29		
ILLINOIS FED. AID PROJECT				



SECTION A-A

NOTES:

1. THE AGGREGATE SHOULDER, 10 (250) OR HMA SHOULDER, 6 (150) (IF REQUIRED) SHALL EXTEND UNDER THE TRAFFIC BARRIER TERMINAL.
2. "EXISTING" GUARDRAIL REFERS TO CONNECTING TERMINAL SECTION TO GUARD RAILING PRIOR TO THE MIDWEST GUARDRAIL SYSTEM.
3. THE CONTRACTOR SHALL VERIFY THE TYPE/HEIGHT OF GUARDRAIL IN-PLACE BEFORE ORDERING THE NEW TERMINAL SECTION. COST INCLUDED WITH THE COST OF THE TERMINAL. THE TERMINAL SECTION HEIGHT TO BE PLACED MUST MATCH THE HEIGHT OF THE IN-PLACE GUARDRAIL.



DEPRESSED CURB AND GUTTER AND SHOULDER TREATMENT AT TBT TY. 1 SPL.

AGGREGATE SHOULDER, 10 (250) WILL BE PAID ACCORDING TO SECTION 481.

HMA SHOULDERS 6 (150) (IF REQUIRED) WILL BE PAID ACCORDING TO SECTION 482.

COMB. CONC. C&G, STEEL PLATE BEAM GUARD RAIL AND TRAFFIC BARRIER TERMINAL, OF THE TYPE SPECIFIED WILL BE PAID FOR SEPARATELY.

DETAILS FOR STEEL PLATE BEAM GUARD RAIL ADJACENT TO CURB AND GUTTER

[FOR ROADWAY SPEED 35 MPH (60 kmh) TO 45 MPH (70 kmh)]

TBT = TRAFFIC BARRIER TERMINAL
ALL DIMENSIONS ARE IN INCHES (MILLIMETERS) UNLESS OTHERWISE SHOWN.

MODEL: BD 34-1 (Sheet)
FILE NAME: c:\p\work\pwworking\diaria\0938723\127922-shh-DiisStds.dgn

USER NAME = ivan.diaz	DESIGNED - M. DE YONG	REVISED - R. BORO 12-08-2008
	DRAWN -	REVISED - R. BORO 09-14-2009
PLOT SCALE = \$SCALE\$	CHECKED -	REVISED - R. BORO 08-06-2012
PLOT DATE = 5/9/2024	DATE - 09-22-90	REVISED - R. BORO 05-08-2015

STATE OF ILLINOIS
DEPARTMENT OF TRANSPORTATION

DETAILS FOR DEPRESSED CURB & GUTTER AND SHOULDER TREATMENT AT TBT TY. 1 SPL.

SCALE: NONE SHEET 1 OF 1 SHEETS STA. TO STA.

F.A.P. RTE.	SECTION	COUNTY	TOTAL SHEETS	SHEET NO.
856	FAP 0856 22 RS	WILL	27	16
BD600-10 (BD 34)			CONTRACT NO. 62T29	
ILLINOIS FED. AID PROJECT				

MODEL: c68 (Sheet)
FILE NAME: c:\p\work\pww\idiazia\0838723\ID127922-shh-Dls\Sds.dgn

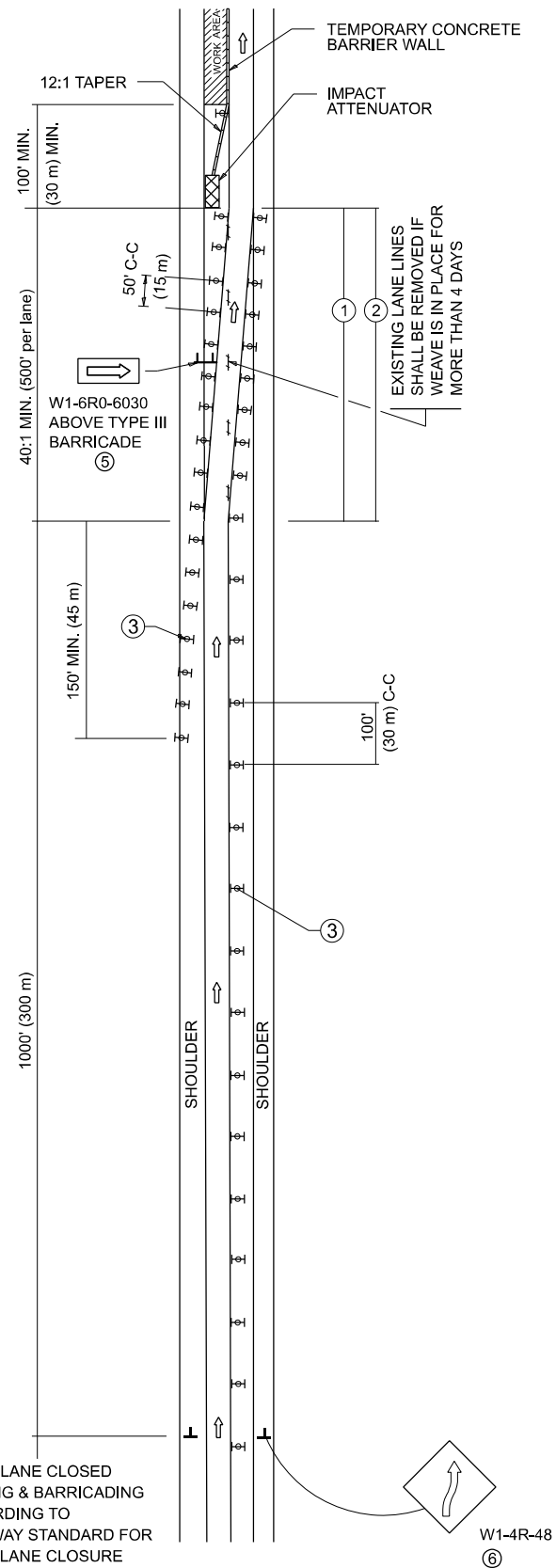
USER NAME = ivan.diaz	DESIGNED -	REVISED -
	DRAWN -	REVISED -
PLOT SCALE = \$\$SCALE\$	CHECKED -	REVISED -
PLOT DATE = 5/9/2024	DATE -	REVISED -

**STATE OF ILLINOIS
DEPARTMENT OF TRANSPORTATION**

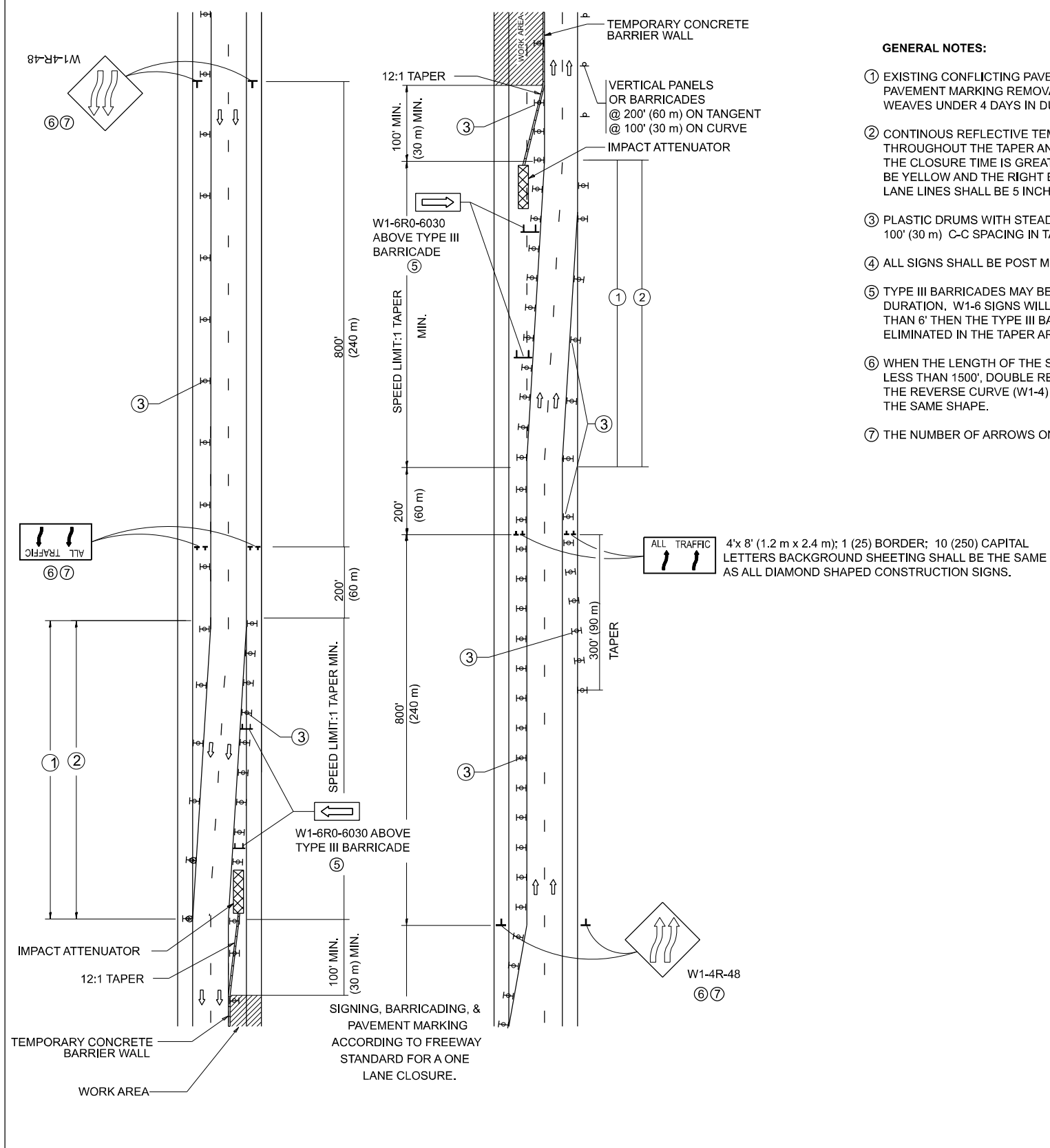
SCALE: SHEET OF SHEETS STA. TO STA.

F.A.P RTE.	SECTION	COUNTY	TOTAL SHEETS	SHEET NO.
856	FAP 0856 22 RS	WILL	27	17
CONTRACT NO. 62T29				
ILLINOIS FED. AID PROJECT				

SINGLE LANE WEAVE



MULTI-LANE WEAVE



GENERAL NOTES:

- ① EXISTING CONFLICTING PAVEMENT MARKING LINES SHALL BE REMOVED. PAVEMENT MARKING REMOVAL SHALL NOT BE REQUIRED FOR SINGLE LANE WEAVES UNDER 4 DAYS IN DURATION.
- ② CONTINUOUS REFLECTIVE TEMPORARY PAVEMENT MARKING TAPE SHALL BE PLACED THROUGHOUT THE TAPER AND FOR 300' (90 m) ALONG SIDE THE WORK AREA WHERE THE CLOSURE TIME IS GREATER THAN FOURTEEN DAYS. THE LEFT EDGE LINE SHALL BE YELLOW AND THE RIGHT EDGE LINE SHALL BE WHITE, FOR MULTI-LANE WEAVES LANE LINES SHALL BE 5 INCH, 10'-30' (3 m-9 m) SKIP DASH, WHITE.
- ③ PLASTIC DRUMS WITH STEADY BURN LIGHTS AT 50' (15 m) C-C SPACING IN TAPERS AND 100' (30 m) C-C SPACING IN TANGENTS.
- ④ ALL SIGNS SHALL BE POST MOUNTED IF THE CLOSURE TIME EXCEEDS FOUR DAYS.
- ⑤ TYPE III BARRICADES MAY BE OMITTED FOR SINGLE-LANE WEAVES UNDER 24-HOURS IN DURATION. W1-6 SIGNS WILL STILL BE REQUIRED. IF THE WIDTH OF OFFSET IS LESS THAN 6' THEN THE TYPE III BARRICADE WITH ATTACHED ARROW SIGN PANEL CAN BE ELIMINATED IN THE TAPER AREAS.
- ⑥ WHEN THE LENGTH OF THE SHIFTED SEGMENT (DISTANCE BETWEEN WEAVE POINTS) IS LESS THAN 1500', DOUBLE REVERSE CURVE SIGNS (W24-1) SHOULD BE USED INSTEAD OF THE REVERSE CURVE (W1-4) SIGNS. ARROWS ON THE 4'X8' "ALL TRAFFIC" SIGNS SHALL BE THE SAME SHAPE.
- ⑦ THE NUMBER OF ARROWS ON THESE SIGNS SHALL MATCH THE NUMBER OF LANES OPEN TO TRAFFIC.

SYMBOLS

- DIRECTION OF TRAFFIC
- WORK AREA
- SIGN ON PORTABLE OR PERMANENT SUPPORT
- TYPE II BARRICADE OR DRUM WITH MONO-DIRECTIONAL STEADY BURNING LIGHT
- TEMPORARY CONCRETE BARRIER WALL
- IMPACT ATTENUATOR
- W1-4R-48 (6)
- W24-1-48 (7)

ALL DIMENSIONS ARE IN INCHES (MILLIMETERS) UNLESS OTHERWISE SHOWN

MODEL: TC 9 (Sheet)
FILE NAME: c:\p\work\pav\td\diaz\0938723\127922-shl-DiaS1ds.dgn

USER NAME = ivan.diaz	DESIGNED - D.W.S.	REVISED - J.A.F. 02-06
PLOT SCALE = \$SCALE\$	CHECKED -	REVISED - S.P.B. 01-07
PLOT DATE = 5/9/2024	DATE -	REVISED - S.P.B. 12-09
		REVISED -

STATE OF ILLINOIS
DEPARTMENT OF TRANSPORTATION

TRAFFIC CONTROL DETAILS FOR
FREEWAY SINGLE & MULTI-LANE WEAVE

SCALE: SHEET OF SHEETS STA. TO STA.

F.A.P. RTE. 856	SECTION FAP 0856 22 RS	COUNTY WILL	TOTAL SHEETS 27	SHEET NO. 18
T.C. 09		CONTRACT NO. 62T29		
ILLINOIS FED. AID PROJECT				

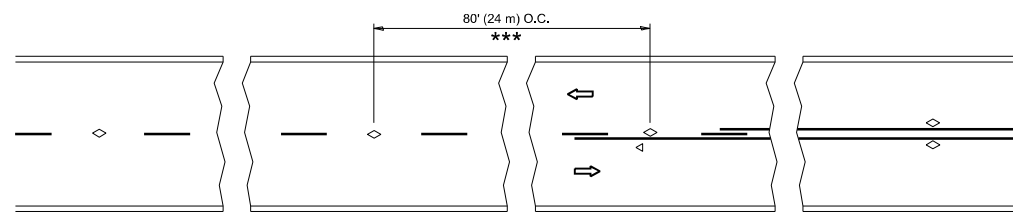
MODEL: TC 10 (Sheet)
FILE NAME: c:\p\work\pww\oldiazia\0938723\127922-shh-Dls\Sds.dgn

USER NAME = ivan.diaz	DESIGNED -	REVISED -
	DRAWN -	REVISED -
PLOT SCALE = \$\$SCALE\$	CHECKED -	REVISED -
PLOT DATE = 5/9/2024	DATE -	REVISED -

**STATE OF ILLINOIS
DEPARTMENT OF TRANSPORTATION**

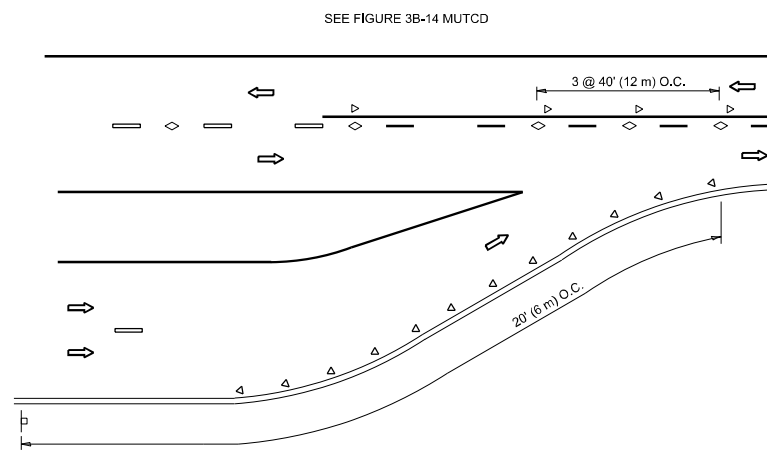
SCALE: SHEET OF SHEETS STA. TO STA.

F.A.P RTE.	SECTION	COUNTY	TOTAL SHEETS	SHEET NO.
856	FAP 0856 22 RS	WILL	27	19
ILLINOIS FED. AID PROJECT			CONTRACT NO. 62T29	

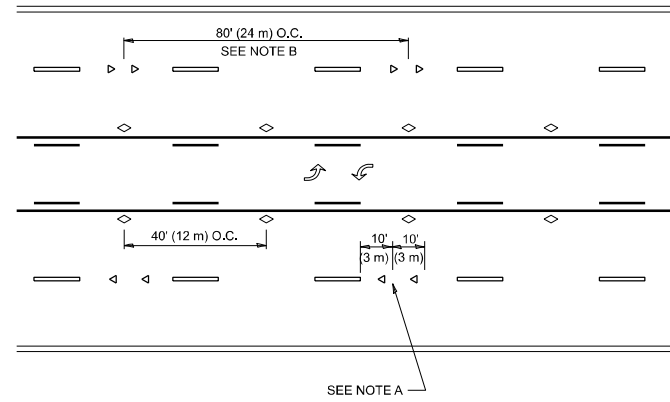


*** REDUCE TO 40' (12 m) O.C. ON CURVES WITH POSTED OR ADVISORY SPEED 45 M.P.H. (70 km/h) OR LESS.

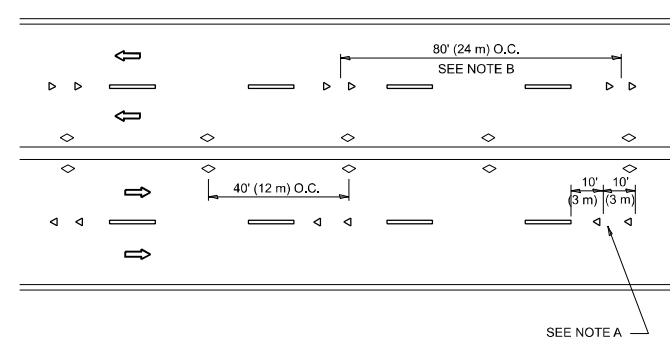
TWO-LANE/TWO-WAY



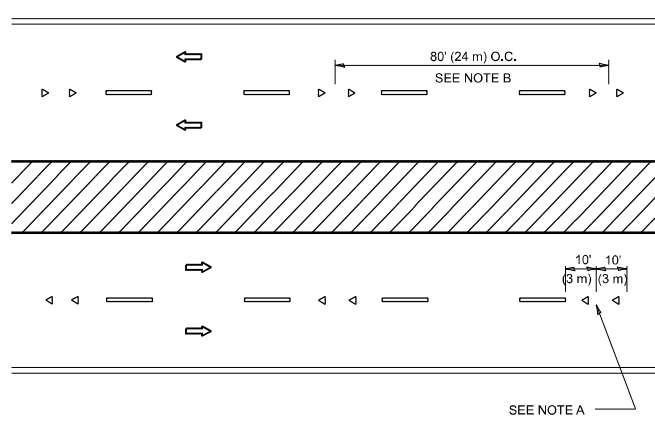
LANE REDUCTION TRANSITION



TWO-WAY LEFT TURN



MULTI-LANE/UNDIVIDED



MULTI-LANE/DIVIDED

GENERAL NOTES

1. MARKERS USED WITH DASHED LINES SHALL BE CENTERED IN THE GAP BETWEEN SEGMENTS.
2. MARKERS USED ADJACENT TO SOLID LINES SHALL BE OFFSET 2 TO 3 (50 TO 75) TOWARD TRAFFIC AS SHOWN.
3. MARKERS THROUGH TANGENTS LESS THAN 500' (150 m) IN LENGTH BETWEEN CURVES SHALL BE INSTALLED AT THE LESSER OF THE TWO CURVE SPACINGS.
4. MARKERS ARE TO BE USED ADJACENT TO BOTH SOLID WHITE LINES IN DUAL LEFT TURN LANES

SYMBOLS

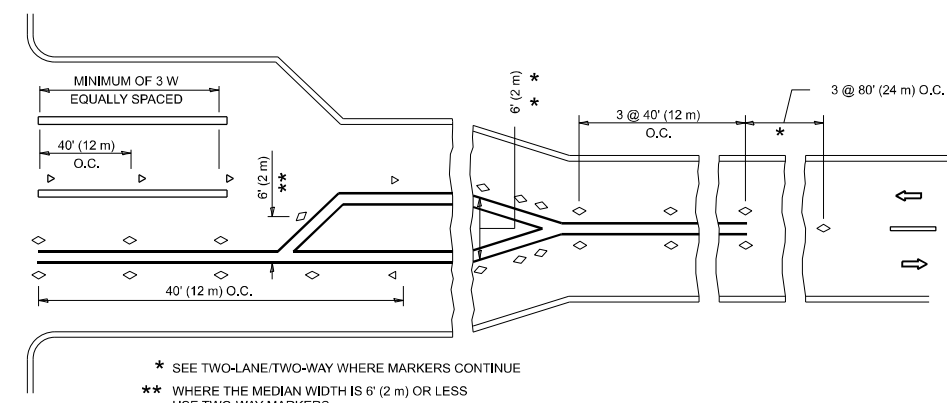
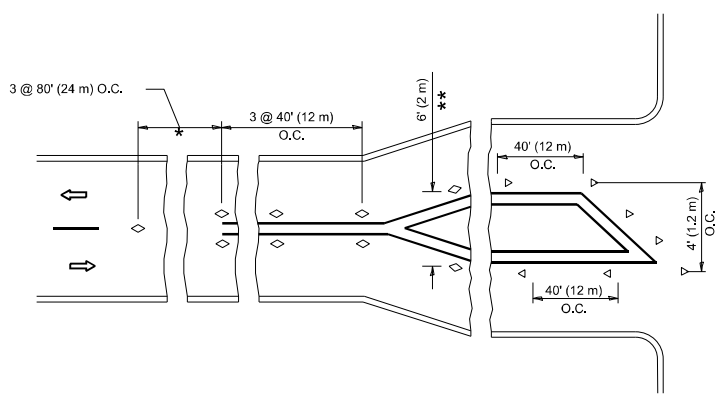
- YELLOW STRIPE
- WHITE STRIPE
- ◁ ONE-WAY AMBER MARKER
- ◁ ONE-WAY CRYSTAL MARKER (W/O)
- ◇ TWO-WAY AMBER MARKER

LANE MARKER NOTES

- A. USE DOUBLE LANE LINE MARKERS SPACED AS SHOWN.
- B. REDUCE TO 40' (12 m) O.C. ON CURVES WHERE ADVISORY SPEEDS ARE 10 M.P.H (20 km/h) LOWER THAN POSTED SPEEDS.

DESIGN NOTES

1. DOUBLE LANE LINE MARKERS SHALL BE USED UNLESS SPECIFIED OTHERWISE.
2. EXCEPT AS SHOWN ON THE LANE REDUCTION TRANSITION AND FREEWAY EXIT RAMP DETAIL, MARKERS ARE NOT TO BE SPECIFIED ON RIGHT EDGE LINES.
3. THE EXACT MARKER LIMITS, SPACING, AND COLOR SHALL BE INCLUDED IN THE PLANS WHEN STANDARD SPECIFICATIONS ARE NOT BEING USED.
4. MARKERS SHOULD NOT BE USED ALONGSIDE CURBS EXCEPT FOR EXTREMELY SHORT SECTIONS OF CURBS WHERE NOT MORE THAN TWO MARKERS WOULD BE INVOLVED.



* SEE TWO-LANE/TWO-WAY WHERE MARKERS CONTINUE
 ** WHERE THE MEDIAN WIDTH IS 6' (2 m) OR LESS USE TWO-WAY MARKERS.

TURN LANES

MODEL: TC 11 (Sheet)
 FILE NAME: c:\p\work\pav\illinois\0938723D\127922-shh-DistStds.dgn

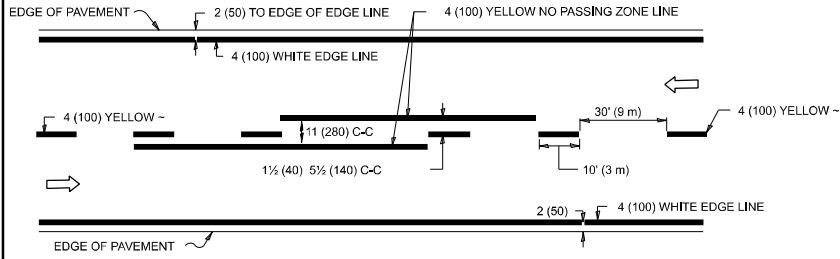
All dimensions are in inches (millimeters) unless otherwise shown.

USER NAME = ivan.diaz	DESIGNED -	REVISED - T. RAMMACHER 03-12-99
PLOT SCALE = \$SCALE\$	DRAWN -	REVISED - T. RAMMACHER 01-06-00
PLOT DATE = 5/9/2024	CHECKED -	REVISED - C. JUCIUS 09-09-09
	DATE -	REVISED - C. JUCIUS 07-01-13

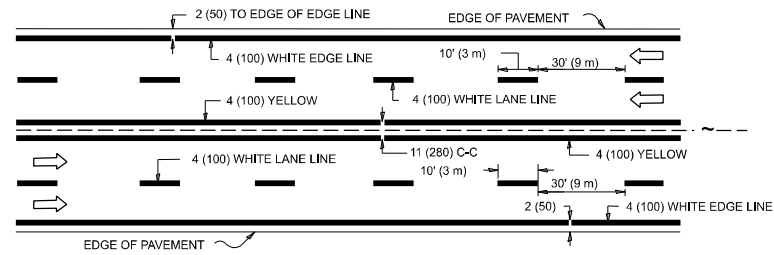
**STATE OF ILLINOIS
 DEPARTMENT OF TRANSPORTATION**

TYPICAL APPLICATIONS	
RAISED REFLECTIVE PAVEMENT MARKERS (SNOW-PLOW RESISTANT)	
SCALE: NONE	SHEET 1 OF 1 SHEETS STA. TO STA.

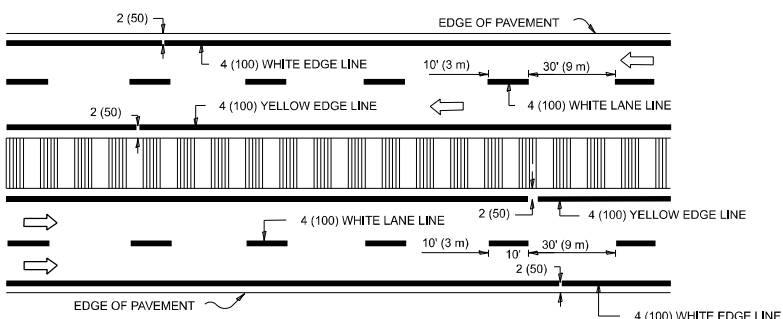
F.A.P. RTE.	SECTION	COUNTY	TOTAL SHEETS	SHEET NO.
856	FAP 0856 22 RS	WILL	27	20
TC-11			CONTRACT NO. 62T29	
ILLINOIS FED. AID PROJECT				



2-LANE ROADWAY

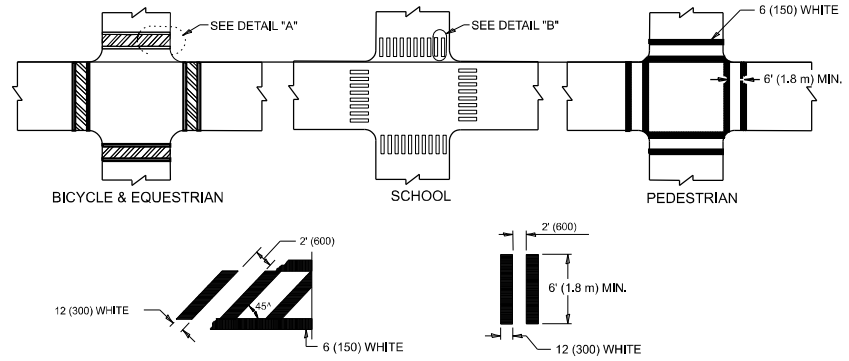


MULTI-LANE UNDIVIDED



MULTI-LANE DIVIDED WITH MEDIAN

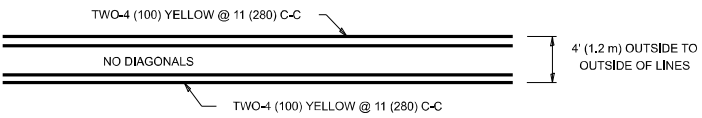
TYPICAL LANE AND EDGE LINE MARKING



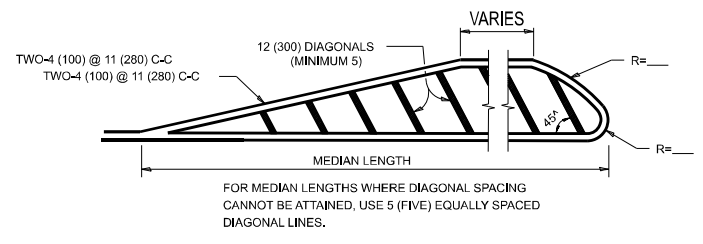
DETAIL "A" DETAIL "B"

TYPICAL CROSSWALK MARKING

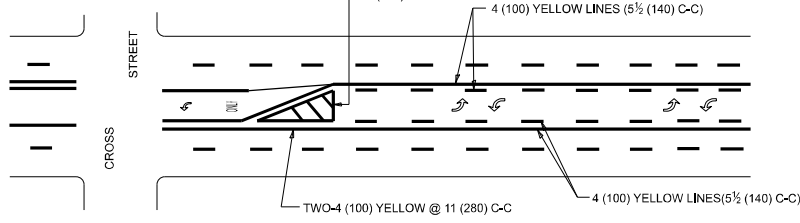
* MARKINGS SHALL BE INSTALLED PARALLEL TO THE CENTERLINE OF THE ROAD WHICH IT CROSSES



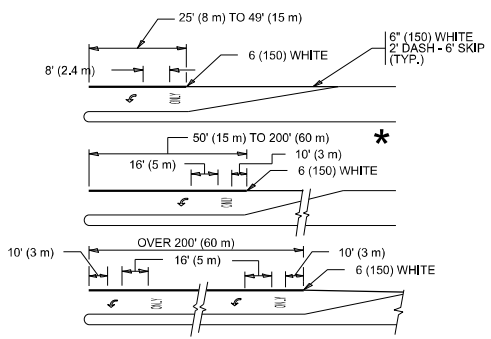
4' (1.2 m) WIDE MEDIANS ONLY



MEDIANS OVER 4' (1.2 m) WIDE



MEDIAN WITH TWO-WAY LEFT TURN LANE TYPICAL PAINTED MEDIAN MARKING

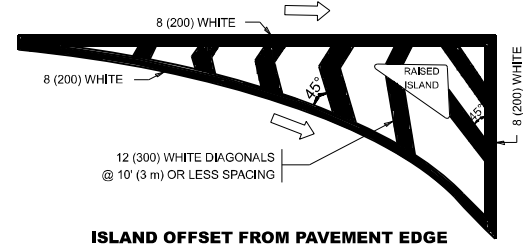


FULL SIZE LETTERS 8' (2.4 m) AND ARROWS SHALL BE USED. AREA = 15.6 SQ. FT. (1.5 m²) ONLY AREA = 20.8 SQ. FT. (1.9 m²)

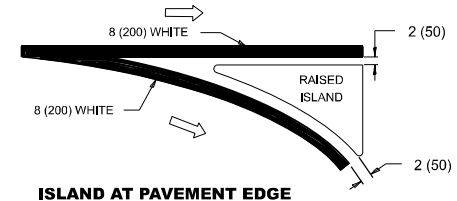
* TURN LANES IN EXCESS OF 400' (120 m) IN LENGTH MAY HAVE AN ADDITIONAL SET OF ARROW - "ONLY" INSTALLED MIDWAY BETWEEN THE OTHER TWO SETS OF ARROW - "ONLY".

TYPICAL LEFT (OR RIGHT) TURN LANE

TYPICAL TURN LANE MARKING

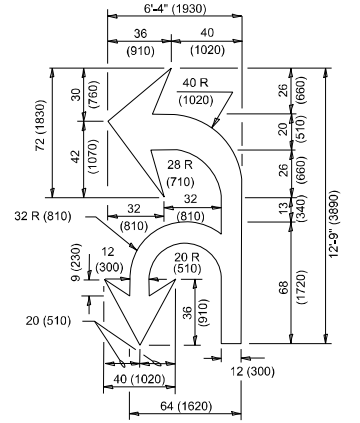


ISLAND OFFSET FROM PAVEMENT EDGE

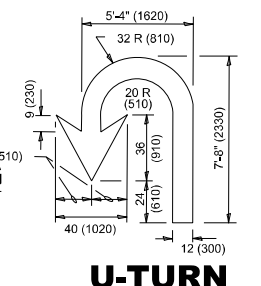


ISLAND AT PAVEMENT EDGE

TYPICAL ISLAND MARKING



COMBINATION LEFT AND U-TURN



U-TURN

D(FT)	SPEED LIMIT
345	30
425	35
500	40
580	45
665	50
750	55

LANE REDUCTION TRANSITION

* LANE REDUCTION ARROWS REQUIRED AT SPEEDS OF 45 MPH OR GREATER OR WHEN SPECIFIED IN PLANS.

TYPE OF MARKING	WIDTH OF LINE	PATTERN	COLOR	SPACING / REMARKS
CENTERLINE ON 2 LANE PAVEMENT	4 (100)	SKIP-DASH	YELLOW	10' (3 m) LINE WITH 30' (9 m) SPACE
CENTERLINE ON MULTI-LANE UNDIVIDED PAVEMENT	2 @ 4 (100)	SOLID	YELLOW	11 (280) C-C
NO PASSING ZONE LINES: FOR ONE DIRECTION FOR BOTH DIRECTIONS	4 (100) 2 @ 4 (100)	SOLID SOLID	YELLOW YELLOW	5½ (140) C-C FROM SKIP-DASH CENTERLINE 11 (280) C-C OMIT SKIP-DASH CENTERLINE BETWEEN
LANE LINES	4 (100) 5 (125) ON FREEWAYS	SKIP-DASH SKIP-DASH	WHITE WHITE	10' (3 m) LINE WITH 30' (9 m) SPACE
DOTTED LINES (EXTENSIONS OF CENTER, LANE OR TURN LANE MARKINGS)	SAME AS LINE BEING EXTENDED	SKIP-DASH	SAME AS LINE BEING EXTENDED	2' (600) LINE WITH 6' (1.8 m) SPACE
EDGE LINES	4 (100)	SOLID	YELLOW-LEFT WHITE-RIGHT	OUTLINE MEDIANS IN YELLOW
TURN LANE MARKINGS	6 (150) LINE: FULL SIZE LETTERS & SYMBOLS (8' (2.4m))	SOLID	WHITE	SEE TYPICAL TURN LANE MARKING DETAIL
TWO WAY LEFT TURN MARKING	2 @ 4 (100) EACH DIRECTION 8' (2.4m) LEFT ARROW	SKIP-DASH AND SOLID IN PAIRS	YELLOW WHITE	10' (3 m) LINE WITH 30' (9 m) SPACE FOR SKIP-DASH; 5½ (140) C-C BETWEEN SOLID LINE AND SKIP-DASH LINE SEE TYPICAL TWO-WAY LEFT TURN MARKING DETAIL
CROSSWALK LINES (PEDESTRIAN) A. DIAGONALS (BIKE & EQUESTRIAN) B. LONGITUDINAL BARS (SCHOOL)	2 @ 6 (150) 12 (300) @ 45° 12 (300) @ 90°	SOLID SOLID SOLID	WHITE WHITE WHITE	NOT LESS THAN 6' (1.8 m) APART 2' (600) APART SEE TYPICAL CROSSWALK MARKING DETAILS.
STOP LINES	24 (600)	SOLID	WHITE	PLACE 4' (1.2 m) IN ADVANCE OF AND PARALLEL TO CROSSWALK, IF PRESENT. OTHERWISE, PLACE AT DESIRED STOPPING POINT, PARALLEL TO CROSSROAD CENTERLINE, WHERE POSSIBLE.
PAINTED MEDIANS	2 @ 4 (100) WITH 12 (300) DIAGONALS @ 45° NO DIAGONALS USED FOR 4' (1.2 m) WIDE MEDIANS	SOLID	YELLOW: TWO WAY TRAFFIC WHITE: ONE WAY TRAFFIC	11 (280) C-C FOR THE DOUBLE LINE SEE TYPICAL PAINTED MEDIAN MARKING.
GORE MARKING AND CHANNELIZING LINES	8 (200) WITH 12 (300) DIAGONALS @ 45°	SOLID	WHITE	DIAGONALS: 15' (4.5 m) C-C (LESS THAN 30MPH (50 km/h)) 20' (6 m) C-C (30 MPH (50 km/h) TO 45MPH (70 km/h)) 30' (9 m) C-C (OVER 45MPH (70 km/h))
RAILROAD CROSSING	24 (600) TRANSVERSE LINES: "RR" IS 6' (1.8 m) LETTERS; 16 (400) LINE FOR "X"	SOLID	WHITE	SEE STATE STANDARD 780001 (AREA OF: "R"=3.6 SQ. FT. (0.33 m ²) EACH "X"=54.0 SQ. FT. (5.0 m ²))
SHOULDER DIAGONALS (REQUIRED FOR SHOULDERS ≥ 8')	12 (300) @ 45°	SOLID	WHITE - RIGHT YELLOW - LEFT	50' (15 m) C-C (LESS THAN 30MPH (50 km/h)) 75' (25 m) C-C (30 MPH (50 km/h) TO 45MPH (70 km/h)) 150' (45 m) C-C (OVER 45MPH (70 km/h))
U TURN ARROW	SEE DETAIL	SOLID	WHITE	16.3 SF
2 ARROW COMBINATION LEFT AND U TURN	SEE DETAIL	SOLID	WHITE	30.4 SF

FOR FURTHER DETAILS ON PAVEMENT MARKING REFER TO STANDARD SPECIFICATIONS FOR ROAD AND BRIDGE CONSTRUCTION AND STATE STANDARD 780001.

All dimensions are in inches (millimeters) unless otherwise shown.

MODEL: TC_13 (Sheet) FILE NAME: c:\p\work\wv\hondiaz\0938723\0127922-shk-DistSldds.dgn

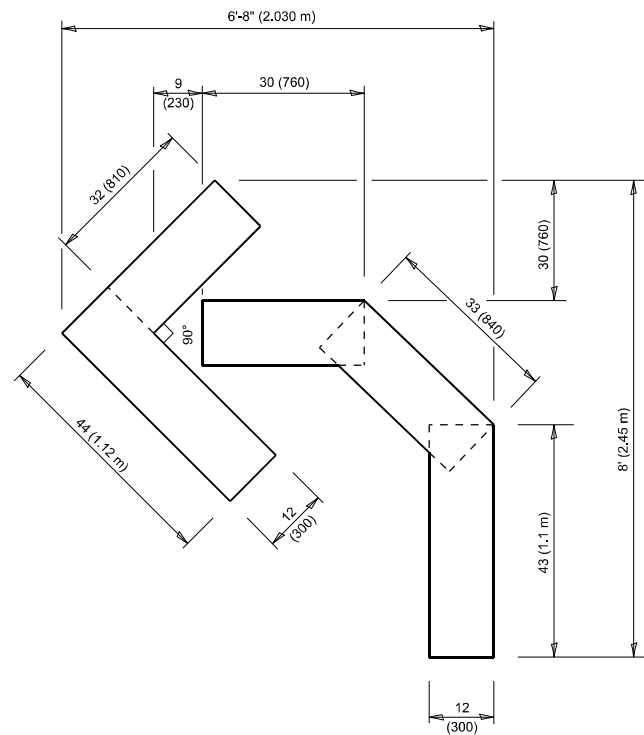
USER NAME = ivan.diaz	DESIGNERS	REVISED. JUCIUS 09-09-09
DRAWN -	CHECKED -	REVISED. JUCIUS 07-01-13
PLOT SCALE = \$SCALE\$	DATE 03-18-90	REVISED. JUCIUS 12-21-15
PLOT DATE = 5/9/2024	DATE 03-18-90	REVISED. JUCIUS 04-12-16

STATE OF ILLINOIS DEPARTMENT OF TRANSPORTATION

DISTRICT ONE TYPICAL PAVEMENT MARKINGS

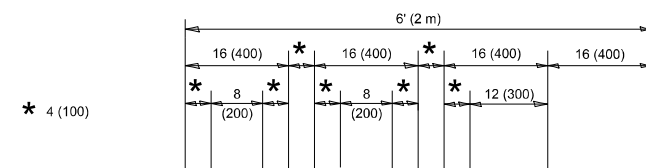
SCALE: 1 SHEET 1 OF SHEETS STA. TO STA.

F.A.P RTE. 856	SECTION FAP 0856 22 RS	COUNTY WILL	TOTAL SHEETS 27	SHEET NO. 21
TC-13		CONTRACT NO. 62T29		
ILLINOIS FED. AID PROJECT				



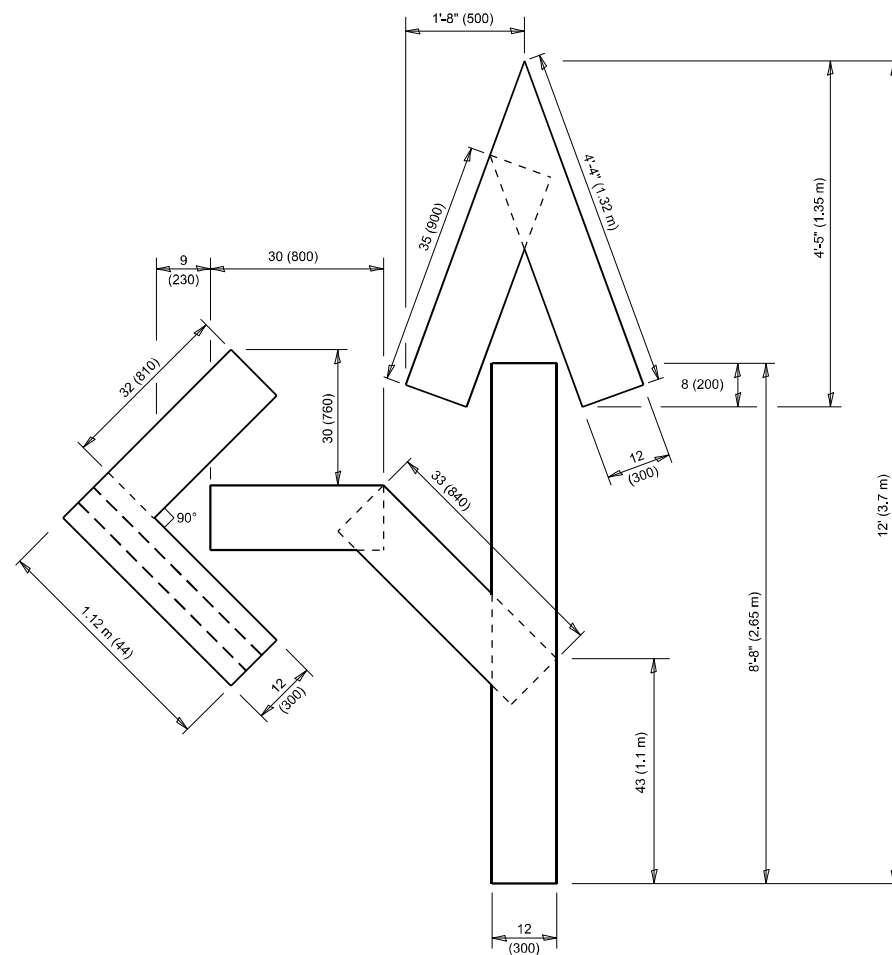
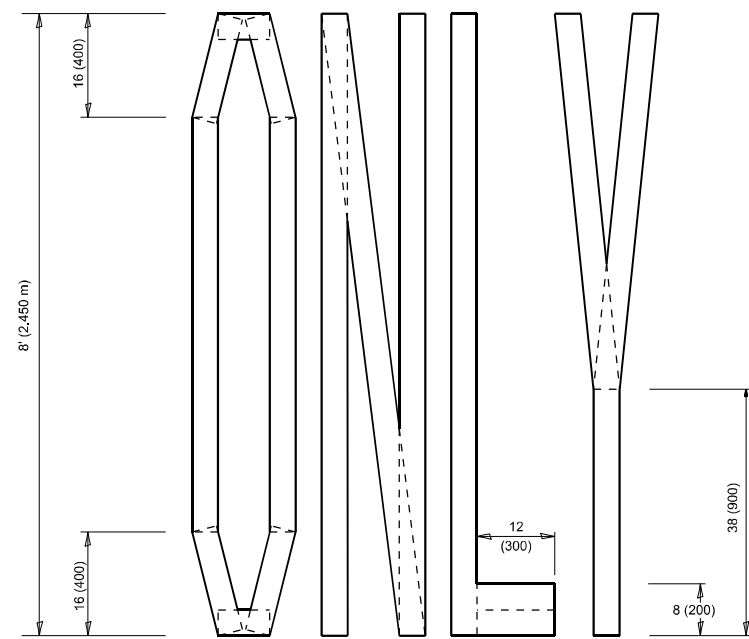
QUANTITY

4 (100) LINE = 45.5 ft. (13.9 m)
15.2 sq. ft. (1.41 sq. m)



QUANTITY

4 (100) LINE = 64.1 ft. (19.5 m)
21.4 sq. ft. (1.99 sq. m)

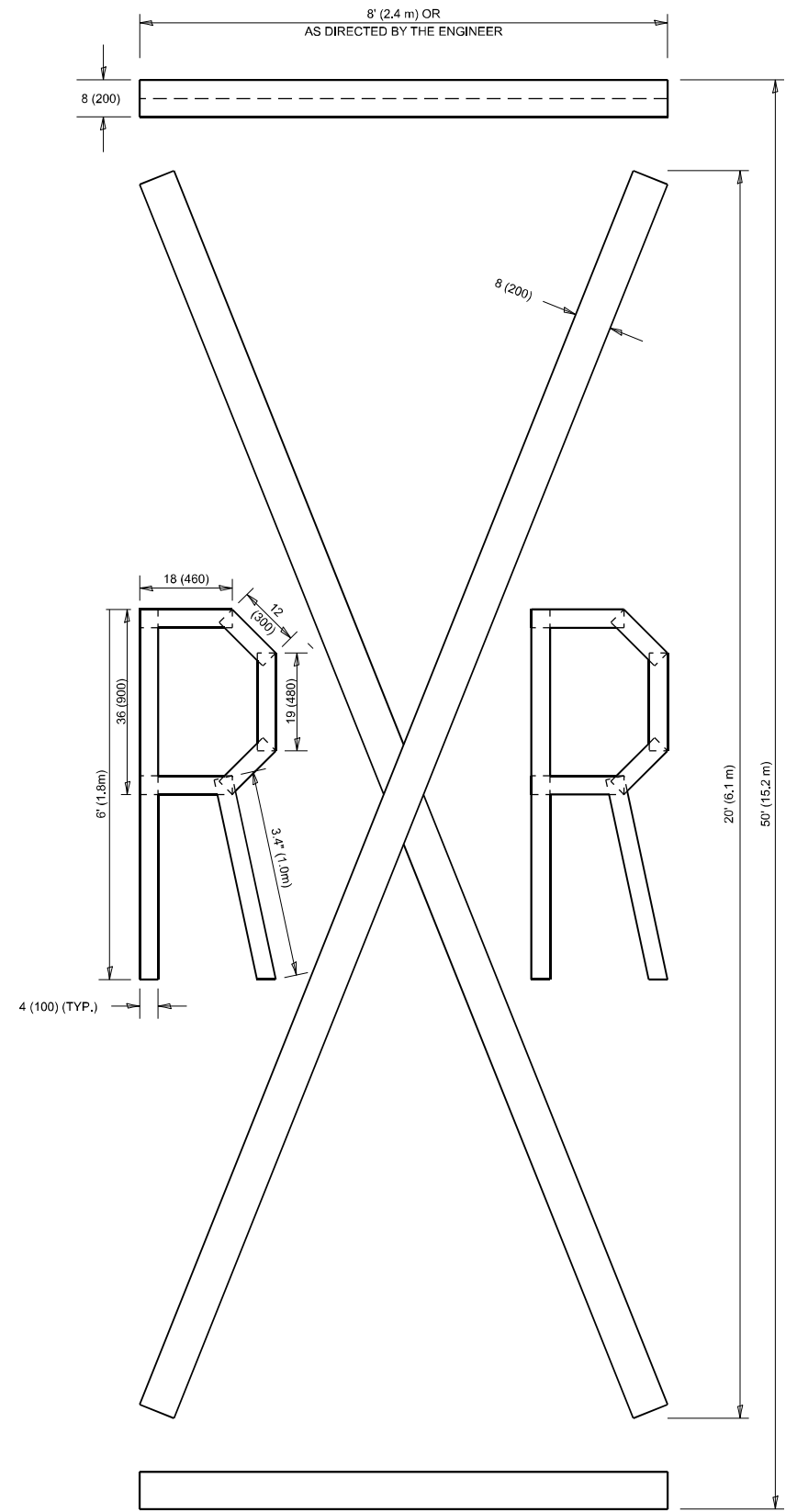


QUANTITY

4 (100) LINE = 82.5 ft. (25.1 m)
27.5 sq. ft. (2.53 sq. m)

NOTE:

ALL QUANTITIES OF PLACEMENT ARE REPRESENTED IN LINEAR FEET OF 4" LINES TO MATCH THE 4" TEMPORARY TAPE PAY ITEM AND REPRESENTS THE TOTAL QUANTITY OF 4" TAPE REQUIRED.



QUANTITY

4 (100) LINE = 225.9 ft. (68.9 m)
75.3 sq. ft. (6.99 sq. m)

All dimensions are in inches (millimeters) unless otherwise shown.

MODEL: TC 16 (Sheet)
FILE NAME: c:\p\work\pav\illinois\0938723\012\922-shh-Dhs\Stds.dgn

USER NAME = ivan.diaz	DESIGNED -	REVISED - T. RAMMACHER 03-02-98
PLOT SCALE = \$SCALE\$	DRAWN -	REVISED - E. GOMEZ 08-28-00
PLOT DATE = 5/9/2024	CHECKED -	REVISED - E. GOMEZ 08-28-00
	DATE - 09-18-94	REVISED - A. SCHUETZE 09-15-16

**STATE OF ILLINOIS
DEPARTMENT OF TRANSPORTATION**

SHORT TERM PAVEMENT MARKING LETTERS AND SYMBOLS

SCALE: NONE SHEET 1 OF 1 SHEETS STA. TO STA.

F.A.P. RTE. 856	SECTION FAP 0856 22 RS	COUNTY WILL	TOTAL SHEETS 27	SHEET NO. 22
TC-16		CONTRACT NO. 62T29		
ILLINOIS FED. AID PROJECT				

MODEL: TC 17 (Sheet)
FILE NAME: c:\p\work\pww\oldiazia\0938723\127922-shh-Dls\Sids.dgn

USER NAME = ivan.diaz	DESIGNED -	REVISED -
	DRAWN -	REVISED -
PLOT SCALE = \$\$SCALE\$	CHECKED -	REVISED -
PLOT DATE = 5/9/2024	DATE -	REVISED -

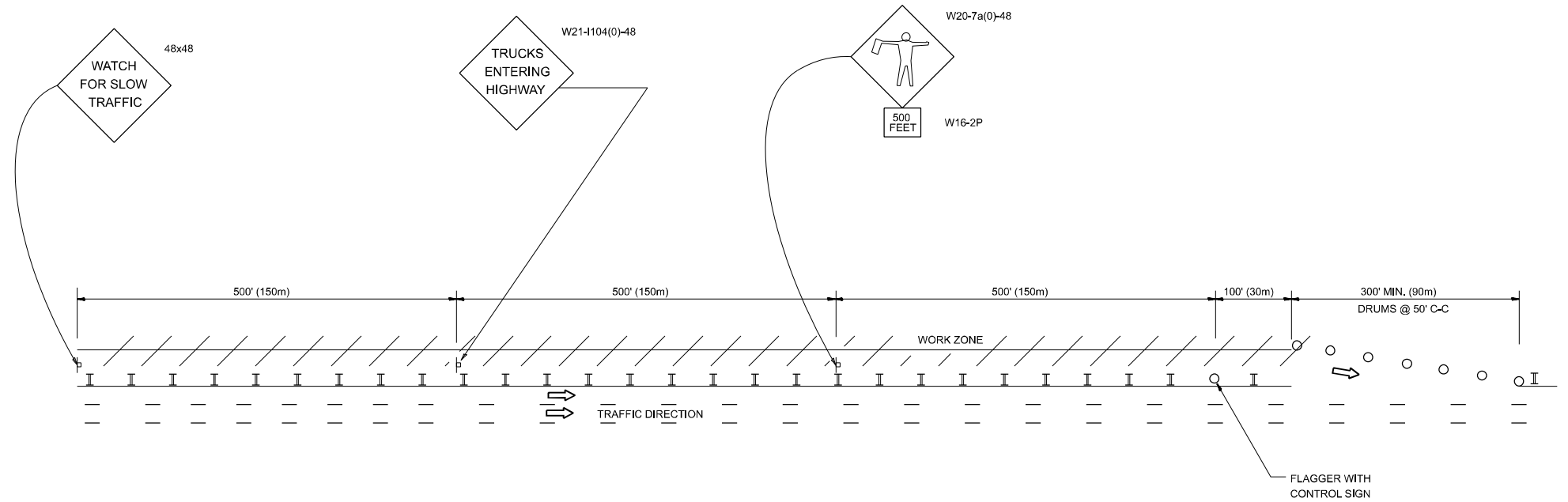
**STATE OF ILLINOIS
DEPARTMENT OF TRANSPORTATION**

SCALE: SHEET OF SHEETS STA. TO STA.

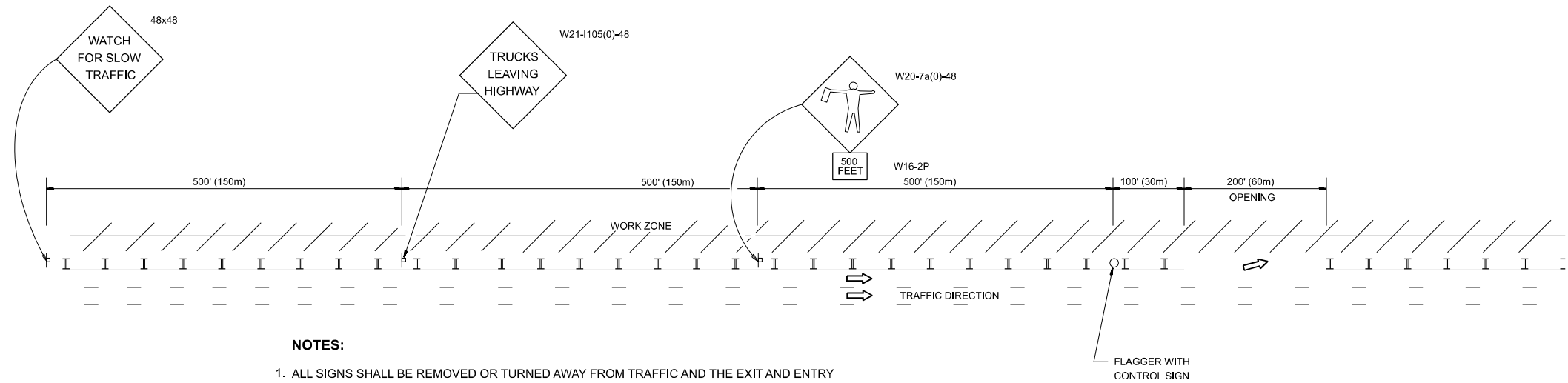
F.A.P RTE.	SECTION	COUNTY	TOTAL SHEETS	SHEET NO.
856	FAP 0856 22 RS	WILL	27	23
ILLINOIS FED. AID PROJECT			CONTRACT NO. 62T29	

SIGNING FOR FLAGGING OPERATIONS AT WORK ZONE OPENINGS

WORK ZONE EXIT OPENING



WORK ZONE ENTRY OPENING



NOTES:

1. ALL SIGNS SHALL BE REMOVED OR TURNED AWAY FROM TRAFFIC AND THE EXIT AND ENTRY OPENINGS SHALL BE CLOSED WHEN THE FLAGGING OPERATION CEASES. NON OPERATING EQUIPMENT SHALL COMPLY WITH ARTICLE 701.11
2. WORK ZONE OPENINGS SHALL BE A MINIMUM OF ONE HALF MILE APART AND A MINIMUM OF ONE QUARTER MILE FROM ALL ENTRANCE AND EXIT RAMPS.
3. EXITING THE WORK ZONE AT ANY PLACE OTHER THAN AT A WORK ZONE EXIT OPENING WILL BE PROHIBITED.
4. ALL VEHICLES SHALL ENTER THE WORK ZONE AT ENTRY OPENINGS, USING THEIR TURN SIGNALS TO WARN MOTORISTS
5. FLAGGERS SHALL NOT STOP TRAFFIC OR DIRECT TRAFFIC INTO AN ADJACENT LANE.

ALL DIMENSIONS ARE IN INCHES (MILLIMETERS)
UNLESS OTHERWISE SHOWN

MODEL: TC_18 (Sheet)
FILE NAME: c:\p\work\pww\diadiaz\0938723\127922-shh-DiaS\Std.dgn

USER NAME = ivan.diaz	DESIGNED -
PLOT SCALE = \$SCALE\$	CHECKED -
PLOT DATE = 5/9/2024	DATE -

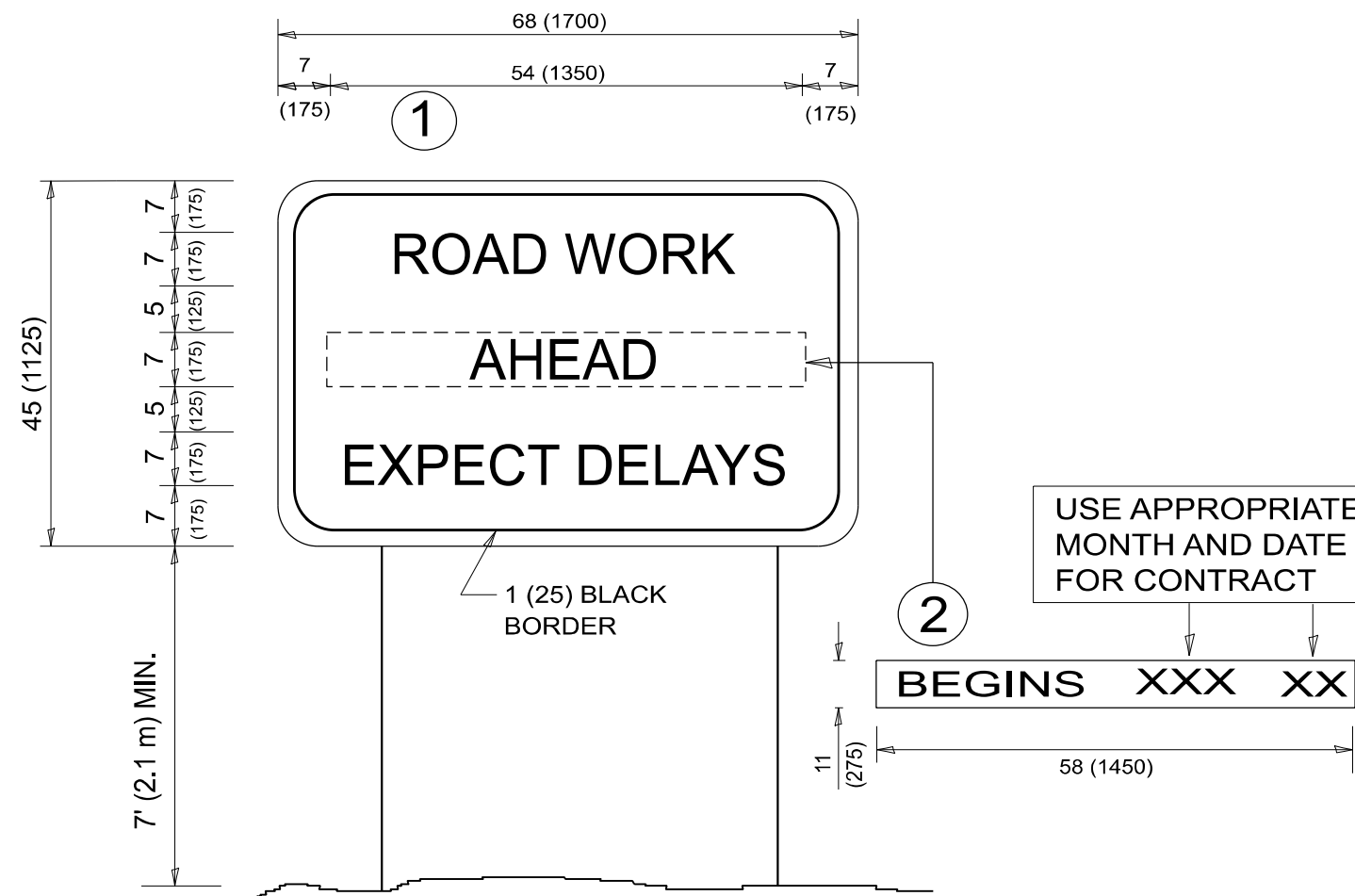
REVISED - J.A.F. 02-06
REVISED - S.P.B. 01-07
REVISED - S.P.B. 12-09
REVISED - M.D.06-13

**STATE OF ILLINOIS
DEPARTMENT OF TRANSPORTATION**

**FREEWAY / EXPRESSWAY SIGNING FOR FLAGGING OPERATIONS
AT WORK ZONE OPENINGS ON FREEWAYS / EXPRESSWAYS**

SCALE: NONE SHEET 1 OF 1 SHEETS STA. TO STA.

F.A.P. RTE.	SECTION	COUNTY	TOTAL SHEETS	SHEET NO.
856	FAP 0856 22 RS	WILL	27	24
TC-18			CONTRACT NO. 62T29	
ILLINOIS FED. AID PROJECT				



NOTES:

1. USE BLACK LETTERING ON ORANGE BACKGROUND.
2. ERECT SIGNS IN ADVANCE OF THE LOCATION FOR THE "ROAD CONSTRUCTION AHEAD" SIGN AT LOCATIONS AS DIRECTED BY THE ENGINEER.
3. ERECT SIGN ① WITH INSTALLED PANEL ② ONE WEEK PRIOR TO THE START OF CONSTRUCTION.
4. REMOVE PANEL ② SOON AFTER THE START OF CONSTRUCTION.
5. SEE SPECIAL PROVISION FOR "TEMPORARY INFORMATION SIGNING" FOR ADDITIONAL INFORMATION.
6. ONE SIGN ASSEMBLY EQUALS 25.70 SQ. FT. (2.3 SQ. M.)
7. SHALL BE PAID FOR AS TEMPORARY INFORMATION SIGNING.

ALL DIMENSIONS ARE IN INCHES (MILLIMETERS) UNLESS OTHERWISE SHOWN.

MODEL: TC 22 (Sheet)
FILE NAME: c:\p\work\pww\old\iaia\0938723\127922-shh-DiaSids.dgn

USER NAME = ivan.diaz	DESIGNED -	REVISED - R. MIRS 09-15-97
PLOT SCALE = \$SCALE\$	DRAWN -	REVISED - R. MIRS 12-11-97
PLOT DATE = 5/9/2024	CHECKED -	REVISED - T. RAMMACHER 02-02-99
	DATE -	REVISED - C. JUCIUS 01-31-07

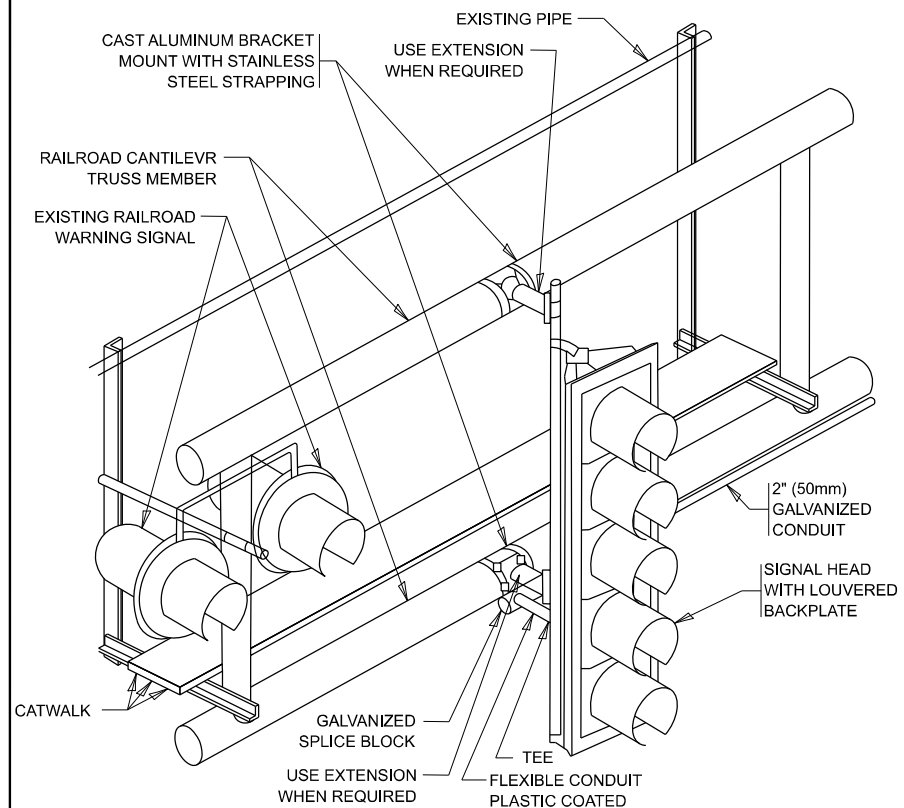
**STATE OF ILLINOIS
DEPARTMENT OF TRANSPORTATION**

**ARTERIAL ROAD
INFORMATION SIGN**

SCALE: NONE SHEET 1 OF 1 SHEETS STA. TO STA.

F.A.P. RTE.	SECTION	COUNTY	TOTAL SHEETS	SHEET NO.
856	FAP 0856 22 RS	WILL	27	25
TC-22			CONTRACT NO. 62T29	
ILLINOIS FED. AID PROJECT				

MODEL: TC-23 (Sheet)
 FILE NAME: c:\p\work\hondolizala\0938723\0127922-shh-DiaSigs.dgn



RAILROAD CANTILEVER SIGNAL HEAD MOUNTING

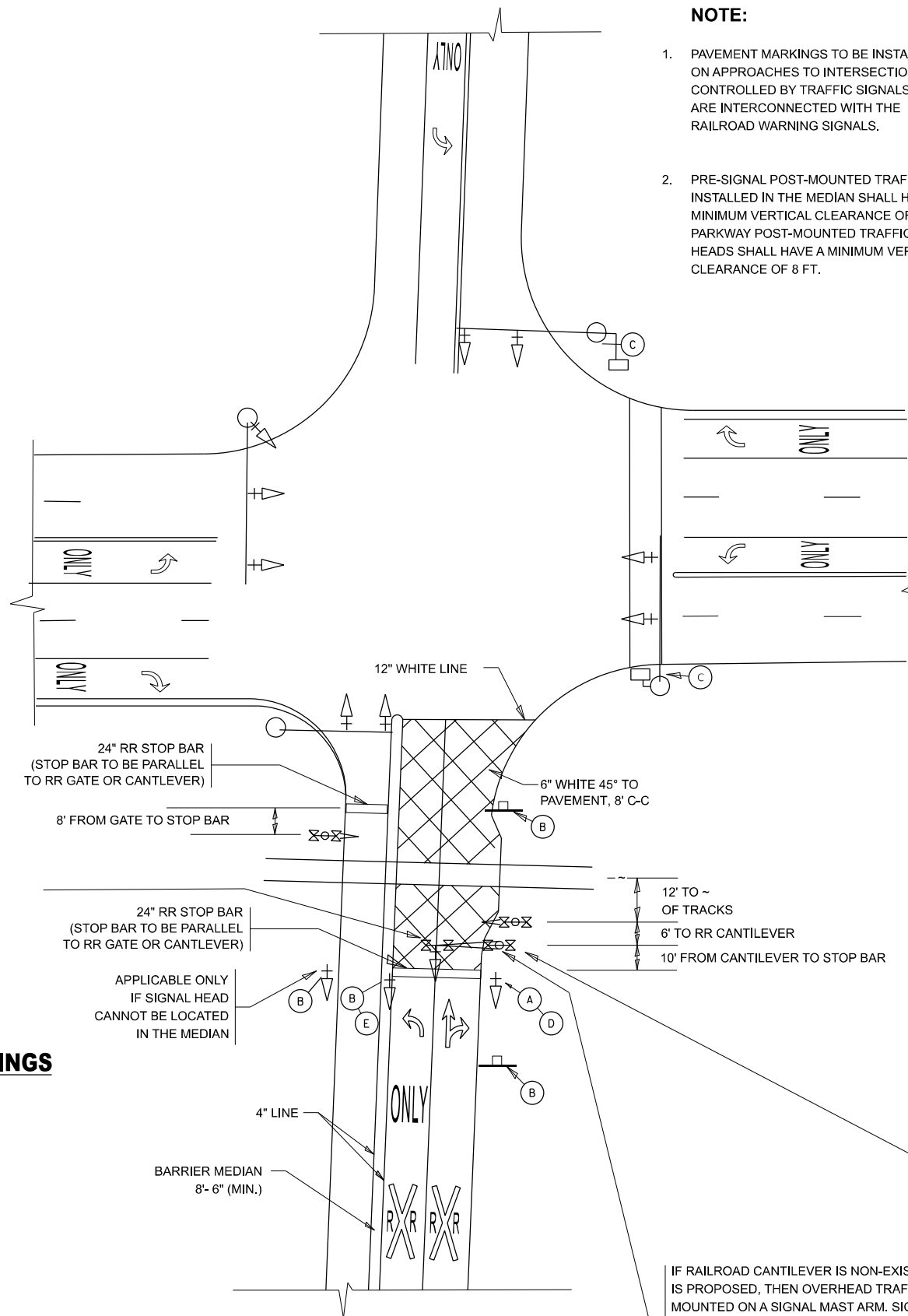
USE NON-CONDUCTIVE SPACERS BETWEEN THE TRAFFIC SIGNAL EQUIPMENT AND THE RAILROAD CANTILEVER TO PREVENT DISSIMILAR METAL CORROSION
 N.T.S.

SIGNING AND PAVEMENT MARKING AT RAILROAD CROSSINGS

SIGNING AND PAVEMENT MARKING TRAFFIC CONTROL STANDARD (TC-23) HAS BEEN DEVELOPED IN CONSULTATION WITH THE ILLINOIS COMMERCE COMMISSION AND THE U.S. DEPARTMENT OF TRANSPORTATION'S GRADE CROSSING SAFETY TASK FORCE. THIS STANDARD PROVIDES INFORMATION ON UPDATES TO THE PAVEMENT MARKING AND SIGNING DETAILS IN ORDER TO INCORPORATE CHANGES ADOPTED IN THE 2009 NATIONAL MANUAL ON UNIFORM TRAFFIC CONTROL DEVICE (MUTCD). THESE NEW DETAILS HAVE BEEN STUDIED AND TESTED BY THE DEPARTMENT AND ACCEPTED BY THE ILLINOIS COMMERCE COMMISSION.

THIS APPLIES TO PROJECTS WHICH INCLUDE RAILROAD INTERCONNECTED TRAFFIC SIGNALS, WITH OR WITHOUT PRE-SIGNALS. THIS STANDARD ALSO APPLIES TO NON-SIGNALIZED INTERSECTIONS THAT ARE WITHIN 81 FEET OF A RAILROAD GRADE CROSSING. THE ILLINOIS SUPPLEMENT TO THE MUTCD SHOULD BE CONSULTED FOR ADDITIONAL INFORMATION ON SIGN REQUIREMENTS AT NON-SIGNALIZED INTERSECTIONS NEAR RAILROAD GRADE CROSSINGS.

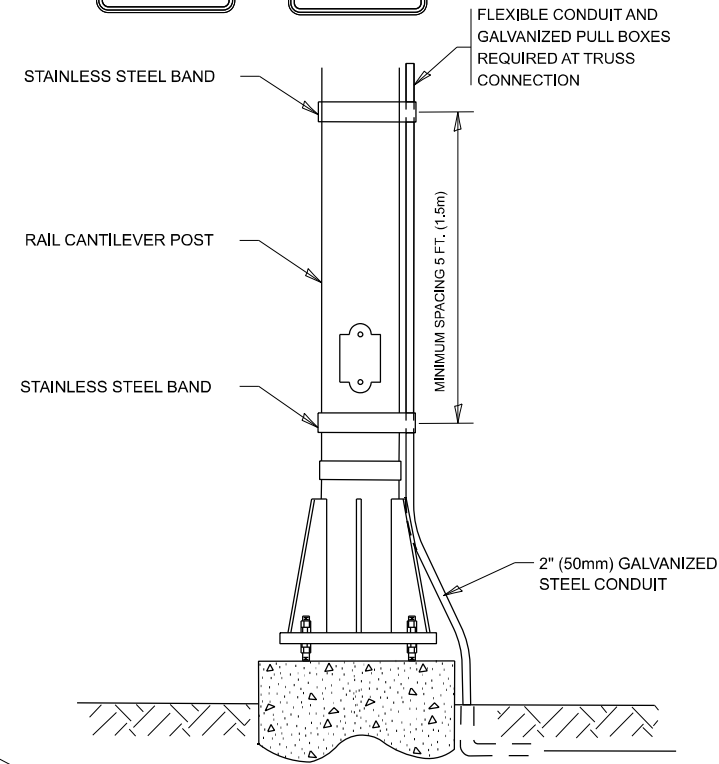
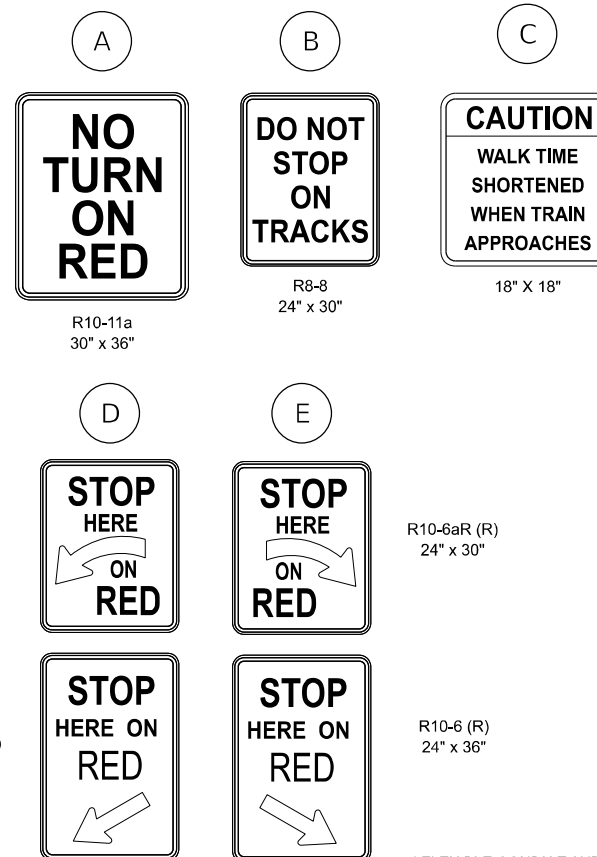
THESE DETAILS WILL BE INCLUDED IN A FUTURE UPDATE TO THE BUREAU OF OPERATIONS TRAFFIC POLICIES AND PROCEDURES MANUAL.



SIGNALIZED INTERSECTION WITH NEAR-SIDE TRAFFIC SIGNAL

NOTE:

- PAVEMENT MARKINGS TO BE INSTALLED ONLY ON APPROACHES TO INTERSECTIONS CONTROLLED BY TRAFFIC SIGNALS WHICH ARE INTERCONNECTED WITH THE RAILROAD WARNING SIGNALS.
- PRE-SIGNAL POST-MOUNTED TRAFFIC SIGNAL HEADS INSTALLED IN THE MEDIAN SHALL HAVE A MINIMUM VERTICAL CLEARANCE OF 4.5 FT. PARKWAY POST-MOUNTED TRAFFIC SIGNAL HEADS SHALL HAVE A MINIMUM VERTICAL CLEARANCE OF 8 FT.



SIGNAL CONDUIT CONNECTION TO RAIL CANTILEVER DETAIL

USE NON-CONDUCTIVE SPACERS BETWEEN THE TRAFFIC SIGNAL EQUIPMENT AND THE RAILROAD CANTILEVER TO PREVENT DISSIMILAR METAL CORROSION.

ALL DIMENSIONS ARE IN INCHES (MILLIMETERS) UNLESS OTHERWISE SHOWN.

STATE OF ILLINOIS
 DEPARTMENT OF TRANSPORTATION

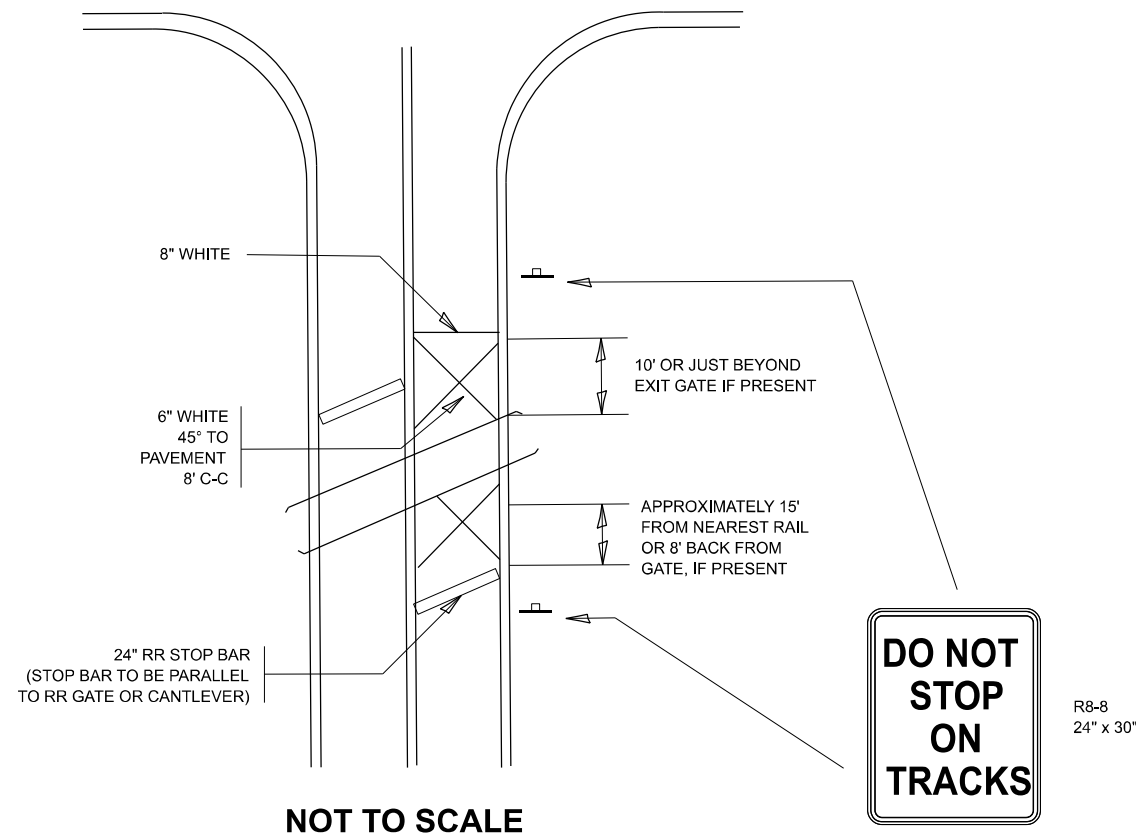
TYPICAL SUPPLEMENTAL SIGNING AND PAVEMENT MARKING
 TREATMENT FOR RAILROAD CROSSINGS

SCALE: NONE SHEET 1 OF 2 SHEETS STA. TO STA.

F.A.P. RTE.	SECTION	COUNTY	TOTAL SHEETS	SHEET NO.
856	FAP 0856 22 RS	WILL	27	26
TC-23			CONTRACT NO. 62T29	
ILLINOIS FED. AID PROJECT				

TYPICAL SUPPLEMENTAL SIGNING AND PAVEMENT MARKING TREATMENT FOR RAILROAD CROSSINGS

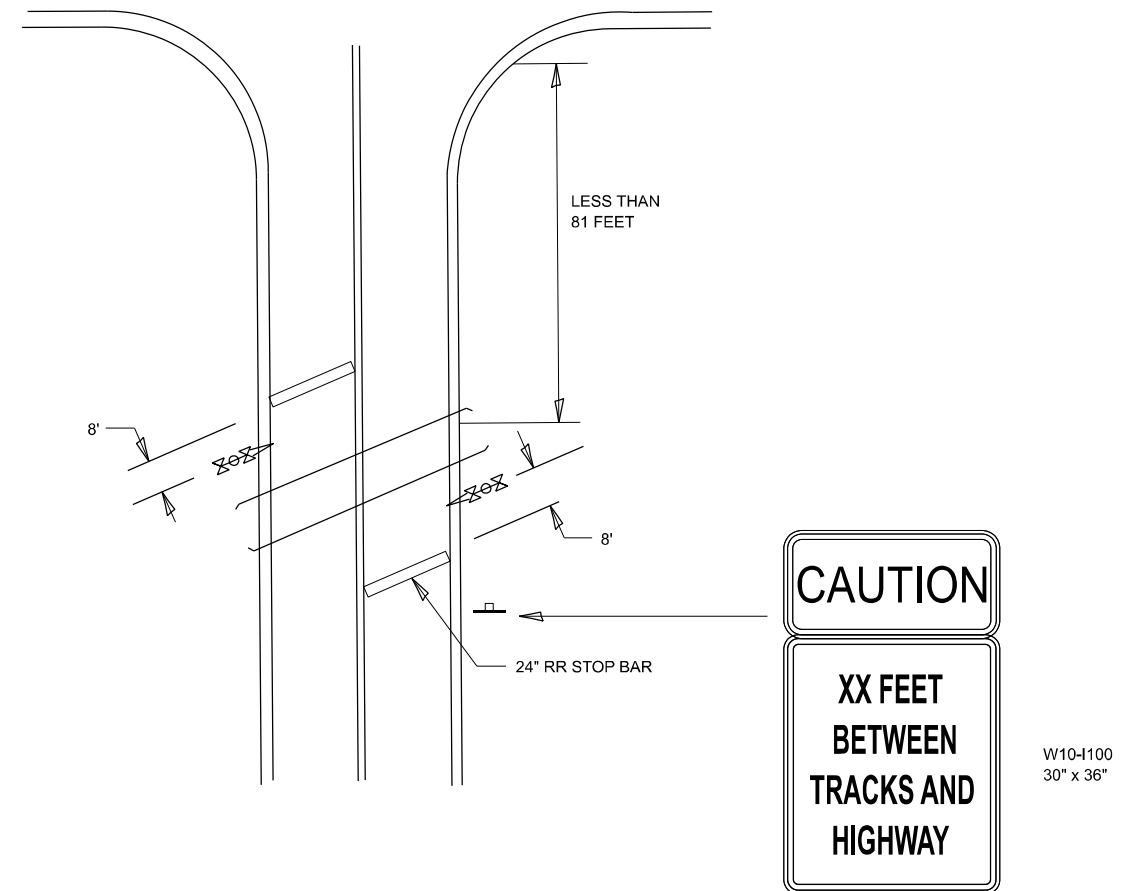
WITH SIGNALIZED INTERSECTION



NOTE:

- PAVEMENT MARKINGS TO BE INSTALLED ONLY ON APPROACHES TO INTERSECTIONS CONTROLLED BY TRAFFIC SIGNALS WHICH ARE INTERCONNECTED WITH THE RAILROAD WARNING SIGNALS.
- WHERE NEAR-SIDE TRAFFIC SIGNALS ARE USED THE PAVEMENT MARKINGS EXTEND TO THE INTERSECTION. (SEE DETAIL FOR PRE-SIGNALS).

WITH NON-SIGNALIZED INTERSECTION 81' OR LESS TO CLOSEST RAIL



NOTE:

- DISTANCE TO BE SHOWN ON SIGN MEASURED FROM A POINT 6 FEET FROM THE RAIL CLOSEST TO THE INTERSECTION OR FROM THE CLOSEST POINT ALONG THE EXIT GATE IF PRESENT OVER THE ROADWAY WHEN IN THE LOWERED POSITION TO THE STOP BAR OR CROSSWALK, WHICHEVER IS CLOSEST, ROUNDED DOWN TO THE NEAREST 5 FEET. WHERE THERE IS NO STOP LINE, MEASURE TO POINT WHERE DRIVER HAS A VIEW OF APPROACHING TRAFFIC.
- THE CLEARANCE SIGN IS ALSO TO BE USED AS AN INTERIM MEASURE AT LOCATIONS WITH INTERCONNECTED INTERSECTION TRAFFIC SIGNALS WHERE IT IS PLANNED TO CHANGE THEM TO NEAR-SIDE SIGNALS AT A FUTURE TIME. IN THIS CASE, THE DISTANCE TO BE SHOWN ON THE SIGN IS MEASURED FROM THE EDGE OF THE STRIPED-OUT AREA INSTEAD OF 6 FEET FROM THE RAIL. THE SIGN IS TO BE REMOVED WHEN THE NEAR-SIDE SIGNALS ARE INSTALLED AND THE PAVEMENT MARKING EXTEND TO THE INTERSECTION.

ALL DIMENSIONS ARE IN INCHES (MILLIMETERS) UNLESS OTHERWISE SHOWN.

MODEL: TC 23B (Sheet)
FILE NAME: c:\p\work\pav\tdi\dia\08938723D\127922-shh-DiisStds.dgn

USER NAME = ivan.diaz	DESIGNED -	REVISED -
PLOT SCALE = \$SCALE\$	DRAWN -	REVISED -
PLOT DATE = 5/9/2024	CHECKED -	REVISED -
	DATE -	REVISED -

STATE OF ILLINOIS
DEPARTMENT OF TRANSPORTATION

TYPICAL SUPPLEMENTAL SIGNING AND PAVEMENT MARKING
TREATMENT FOR RAILROAD CROSSINGS

SCALE: NONE SHEET 2 OF 2 SHEETS STA. TO STA.

F.A.P. RTE.	SECTION	COUNTY	TOTAL SHEETS	SHEET NO.
856	FAP 0856 22 RS	WILL	27	27
TC-23			CONTRACT NO. 62T29	
ILLINOIS FED. AID PROJECT				