

STATE OF ILLINOIS  
DEPARTMENT OF TRANSPORTATION

*TAS BUILT*

**PROPOSED  
HIGHWAY PLANS**

**FAI ROUTE 88 (I-88)  
SECTION (195-2HB)BJR  
P-92-050-23  
BRIDGE REPAIR OF STRUCTURE  
CARRYING IL 78 OVER  
INTERSTATE 88  
WHITESIDE COUNTY  
PROJECT NHPP-86LU(124)  
C-92-123-22**

F.A.I. RTE.	SECTION	COUNTY	TOTAL SHEETS	SHEET NO.
88	(195-2HB)BJR	WHITESIDE	31	1
		ILLINOIS	CONTRACT NO. 64S04	

**INDEX OF SHEETS**

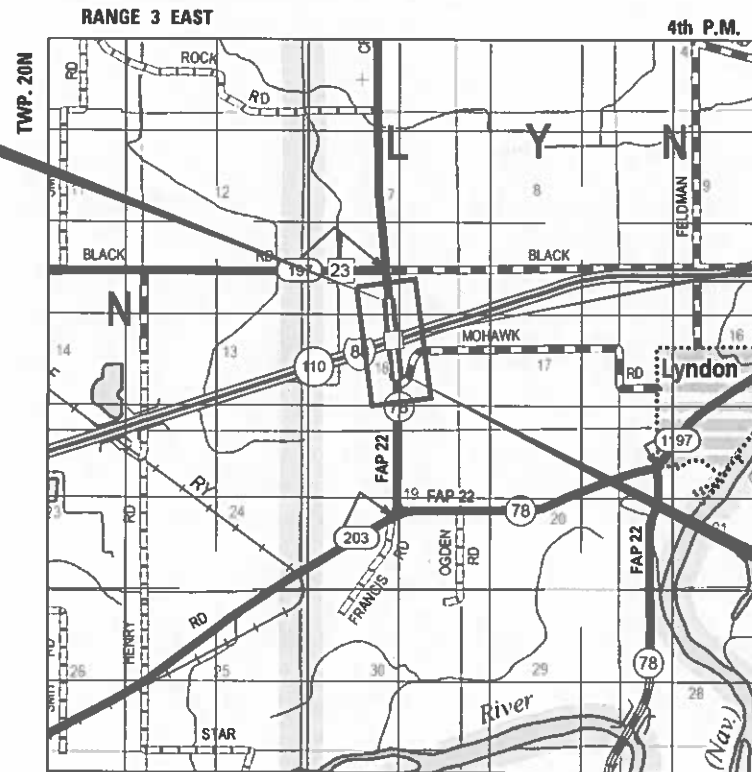
- 1 COVER SHEET
- 2 GENERAL NOTES
- 3-5 SUMMARY OF QUANTITIES
- 6-13 MAINTENANCE OF TRAFFIC PLANS
- 14-22 STRUCTURAL PLANS
- 23-26 WORK ZONE SIGN DETAILS (34.1)
- 27-29 TYPICAL PAVEMENT MARKINGS (41.1)
- 30 GUARDRAIL REFLECTORS, TYPE C (SPECIAL) (55.1)
- 31 GENERAL DETAILS

**HIGHWAY STANDARDS**

- 000001-08 STANDARDS SYMBOLS, ABBREVIATIONS AND PATTERNS
- 001001-02 AREAS OF REINFORCEMENT BARS
- 001006-00 DECIMALS OF AN INCH AND OF A FOOT
- 482006-03 HMA SHOULDER ADJACENT TO RIGID PAVEMENT
- 606001-08 CONCRETE CURB TYPE B AND COMBINATION CURB AND GUTTER
- 606301-04 PC CONCRETE ISLANDS AND MEDIANS
- 701006-05 OFF-ROAD OPERATIONS, 2L, 2W, 15' (4.5m) TO 24" (600mm) FROM PAVEMENT EDGE
- 701011-04 OFF-ROAD MOVING OPERATIONS, 2L, 2W, DAY ONLY
- 701101-05 OFF-ROAD OPERATIONS, MULTILANE, 15' (4.5m) TO 24" (600mm) FROM PAVEMENT EDGE
- 701201-05 LANE CLOSURE, 2L, 2W, DAY ONLY, FOR SPEEDS 45MPH OR MORE
- 701301-04 LANE CLOSURE, 2L, 2W, SHORT TIME OPERATIONS
- 701311-03 LANE CLOSURE, 2L, 2W, MOVING OPERATIONS-DAY ONLY
- 701326-04 LANE CLOSURE, 2L, 2W, PAVEMENT WIDENING, FOR SPEEDS 45 MPH OR MORE
- 701331-05 LANE CLOSURE, 2L, 2W, WITH RUN-AROUND, FOR SPEEDS 45 MPH OR MORE
- 701400-11 APPROACH TO LANE CLOSURE, FREEWAY/EXPRESSWAY
- 701406-13 LANE CLOSURE, FREEWAY/EXPRESSWAY, DAY OPERATIONS ONLY
- 701426-09 LANE CLOSURE, MULTILANE, INTERMITTENT OR MOVING OPERATION, FOR SPEEDS 45 MPH OR MORE
- 701901-08 TRAFFIC CONTROL DEVICES
- 780001-05 TYPICAL PAVEMENT MARKINGS
- 782006-01 GUARDRAIL AND BARRIER WALL REFLECTOR MOUNTING DETAILS

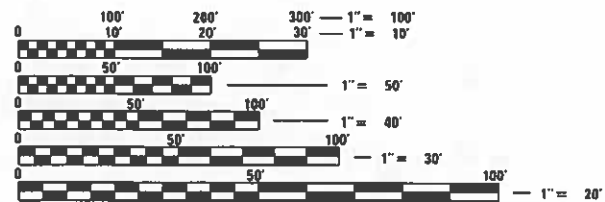


**IMPROVEMENTS BEGINS**  
Sta. 288 + 17.76  
**SECTION BEGINS**  
Sta. 288 + 17.76



**BRIDGE REPAIRS  
EXIST SN 098-0065**

**IMPROVEMENTS ENDS**  
Sta. 291 + 27.60  
**SECTION ENDS**  
Sta. 291 + 27.60



FULL SIZE PLANS HAVE BEEN PREPARED USING STANDARD ENGINEERING SCALES. REDUCED SIZED PLANS WILL NOT CONFORM TO STANDARD SCALES. IN MAKING MEASUREMENTS ON REDUCED PLANS, THE ABOVE SCALES MAY BE USED.

J.U.L.I.E.  
JOINT UTILITY LOCATION INFORMATION FOR EXCAVATORS  
1-800-892-0123  
OR 811

**PROJECT ENGINEER ERIC J. LINDEMANN, P.E.**  
**PROJECT MANAGER MAHMOUD ETEMADI, P.E.**

**CONTRACT NO. 64S04**



*Eric J. Lindemann*  
04-03-2023  
ERIC J. LINDEMANN  
ILLINOIS REG. PROFESSIONAL ENGINEER NO. 062-051170  
EXPIRATION DATE 11-30-2023  
SHEETS 1-13, 23-31



*Moshé L. Cohen*  
04-03-2023  
Illinois Structural Engineer  
No. 081-008104  
License Expires 11-30-2024  
SHEETS 14-22

STATE OF ILLINOIS  
DEPARTMENT OF TRANSPORTATION

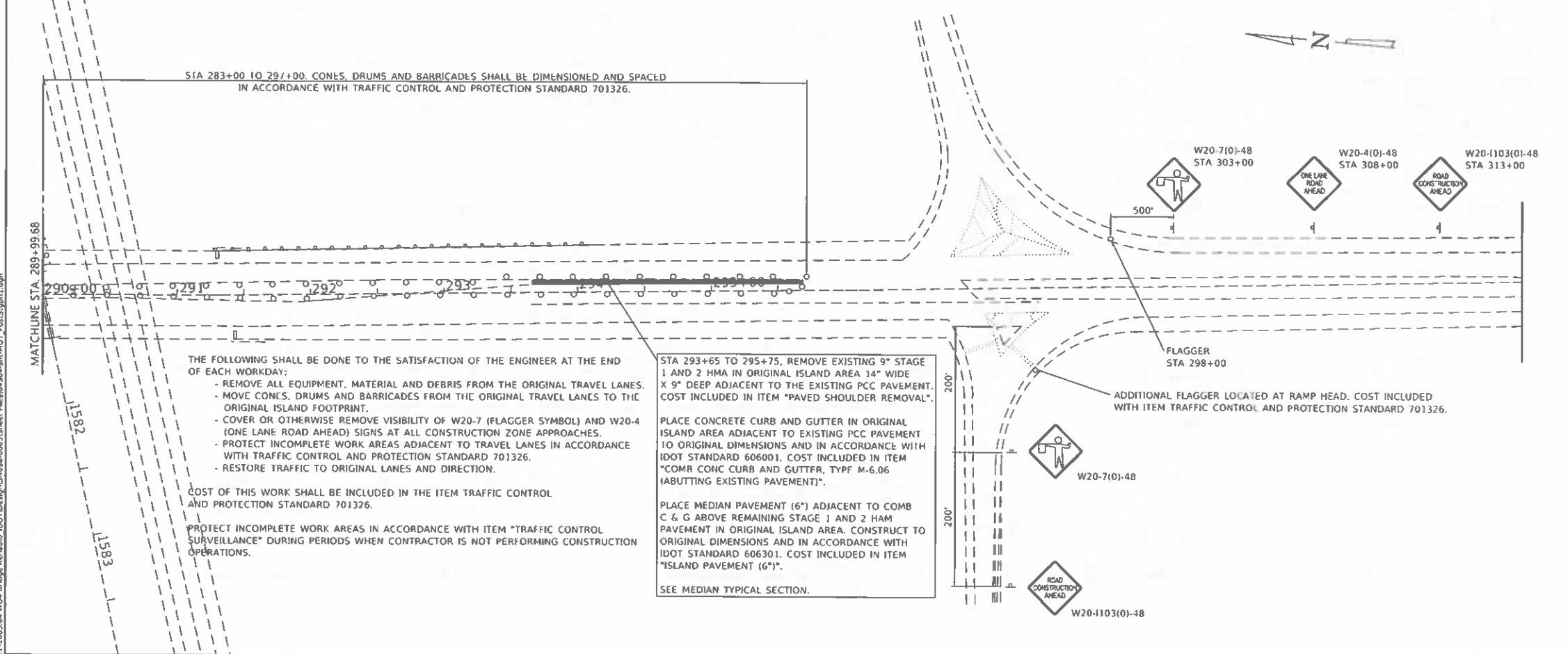
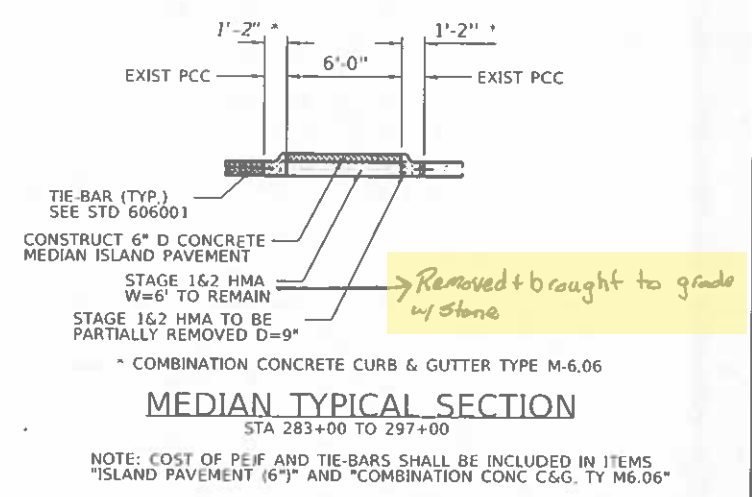
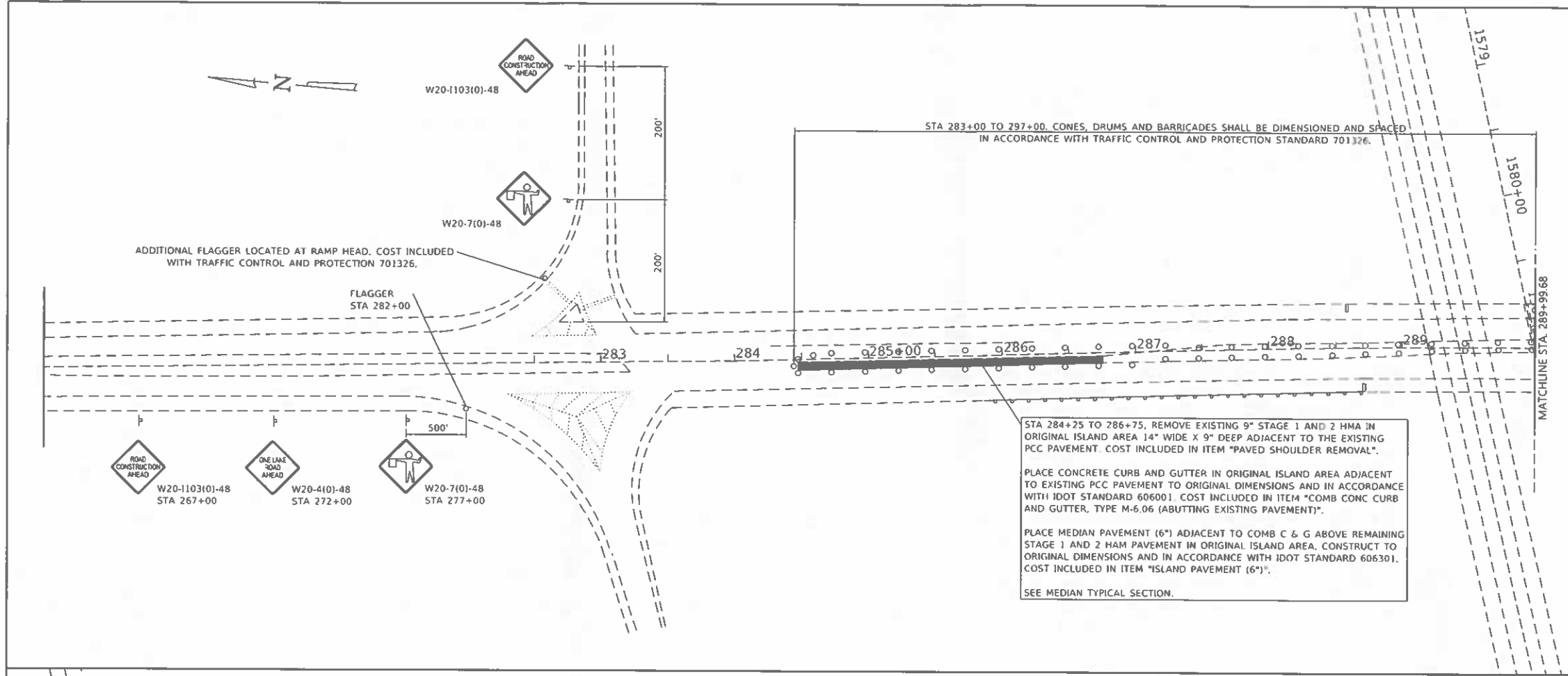
SUBMITTED May 16, 2023

*Frank Ahmed*  
REGIONAL ENGINEER

May 12, 2023 *Eric J. Lindemann*  
ENGINEER OF DESIGN AND ENVIRONMENT

May 12, 2023 *Steph M. Davis*  
DIRECTOR OF HIGHWAYS PROJECT IMPLEMENTATION

**PRINTED BY THE AUTHORITY  
OF THE STATE OF ILLINOIS**



THE FOLLOWING SHALL BE DONE TO THE SATISFACTION OF THE ENGINEER AT THE END OF EACH WORKDAY:

- REMOVE ALL EQUIPMENT, MATERIAL AND DEBRIS FROM THE ORIGINAL TRAVEL LANES.
- MOVE CONES, DRUMS AND BARRICADES FROM THE ORIGINAL TRAVEL LANES TO THE ORIGINAL ISLAND FOOTPRINT.
- COVER OR OTHERWISE REMOVE VISIBILITY OF W20-7 (FLAGGER SYMBOL) AND W20-4 (ONE LANE ROAD AHEAD) SIGNS AT ALL CONSTRUCTION ZONE APPROACHES.
- PROTECT INCOMPLETE WORK AREAS ADJACENT TO TRAVEL LANES IN ACCORDANCE WITH TRAFFIC CONTROL AND PROTECTION STANDARD 701326.
- RESTORE TRAFFIC TO ORIGINAL LANES AND DIRECTION.

COST OF THIS WORK SHALL BE INCLUDED IN THE ITEM TRAFFIC CONTROL AND PROTECTION STANDARD 701326.

PROTECT INCOMPLETE WORK AREAS IN ACCORDANCE WITH ITEM "TRAFFIC CONTROL SURVEILLANCE" DURING PERIODS WHEN CONTRACTOR IS NOT PERFORMING CONSTRUCTION OPERATIONS.

MODEL: 2D Sheet M  
FILE NAME: P:\22-1005.04 W04 Bridge Rehab\01 IDOT\Design\US98-06815\Sheet Files\64504-Int-40T\_PostStp1.dgn



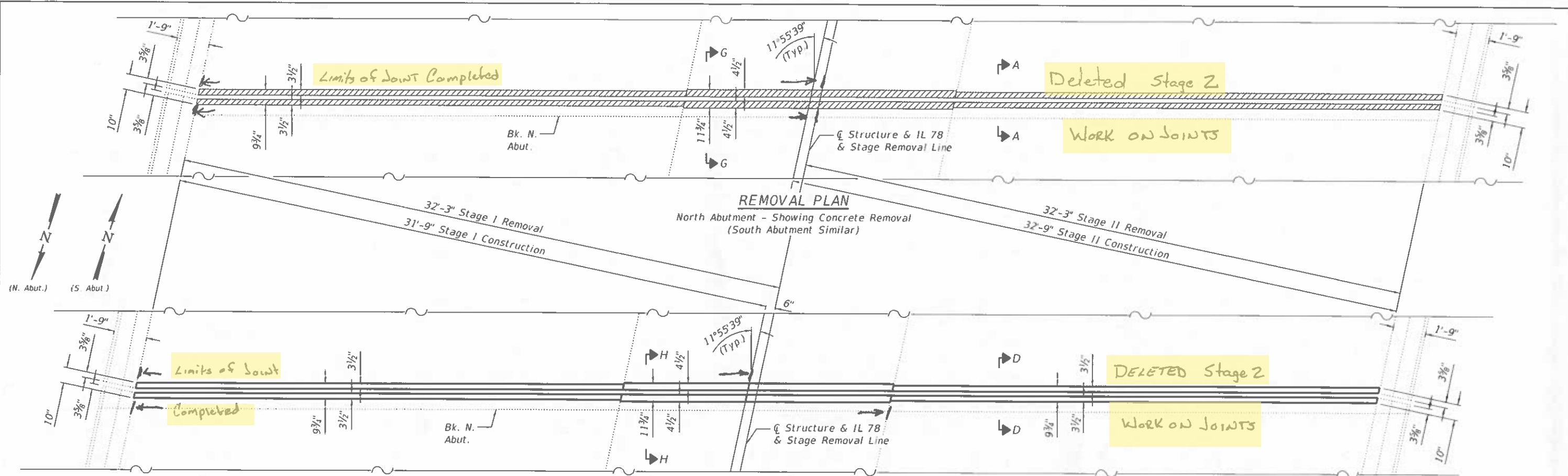
USER NAME = jwarner	DESIGNED -	REVISED -
PLOT SCALE = 0.166667' / in.	DRAWN - BCG	REVISED -
PLOT DATE = 4/21/2023	CHECKED -	REVISED -
	DATE -	REVISED -

**STATE OF ILLINOIS  
DEPARTMENT OF TRANSPORTATION**

**MAINTENANCE OF TRAFFIC PLAN POST-STAGE CONSTRUCTION  
IL 78 OVER INTERSTATE 88**

SCALE: SHEET 7 OF 8 SHEETS STA. TO STA.

F.A. RTE.	SECTION	COUNTY	TOTAL SHEETS	SHEET NO.
88	(195-2HB)BJR	WHITESIDE	31	12
CONTRACT NO. 64504				
ILLINOIS FED. AID PROJECT				

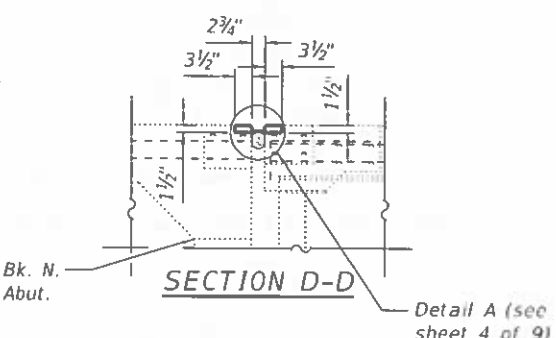
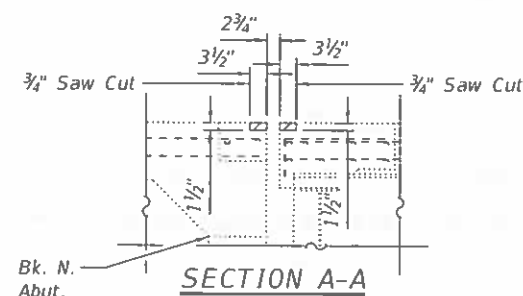


**REMOVAL PLAN**  
North Abutment - Showing Concrete Removal  
(South Abutment Similar)

**REPLACEMENT PLAN**  
North Abutment - Showing Concrete Replacement  
(South Abutment Similar)

**LEGEND**  
 Indicates Concrete Removal

**Notes:**  
 The Contractor shall use extreme care during concrete removal so as not to damage the existing steel beams. Any steel damaged during concrete removal operations shall be repaired at the Contractor's expense.  
 Removal of existing expansion joint and associated material shall not be paid for separately, but shall be included in the cost of Concrete Removal.  
 Existing reinforcement bars extending into the removal area shall be cleaned, straightened and incorporated into new construction.  
 Any reinforcement bars that are damaged during concrete removal operations shall be replaced at the Contractor's expense.  
 Stud shear connectors damaged during concrete removal operations shall be removed and replaced per Section 505 of the Standard Specifications at the Contractor's expense.  
 For Detail A and Sections G-G and H-H, see sheet 4 of 9.



**BILL OF MATERIAL**

Item	Unit	Total
Concrete Removal	Cu. Yd.	0.8
Silicone Joint Sealer, 1"	Foot	140
Silicone Joint Sealer, 2.75"	Foot	136
Polymer Concrete	Cu. Ft.	20.0

MODEL: Derault  
 FILE NAME: P:\172-1005.04 W04 Bridge Rehab\1007\Structures\0980065-64504-003-Superstructure\JointReplacementDetails.dgn  
 4/13/2013 8:18:35 AM

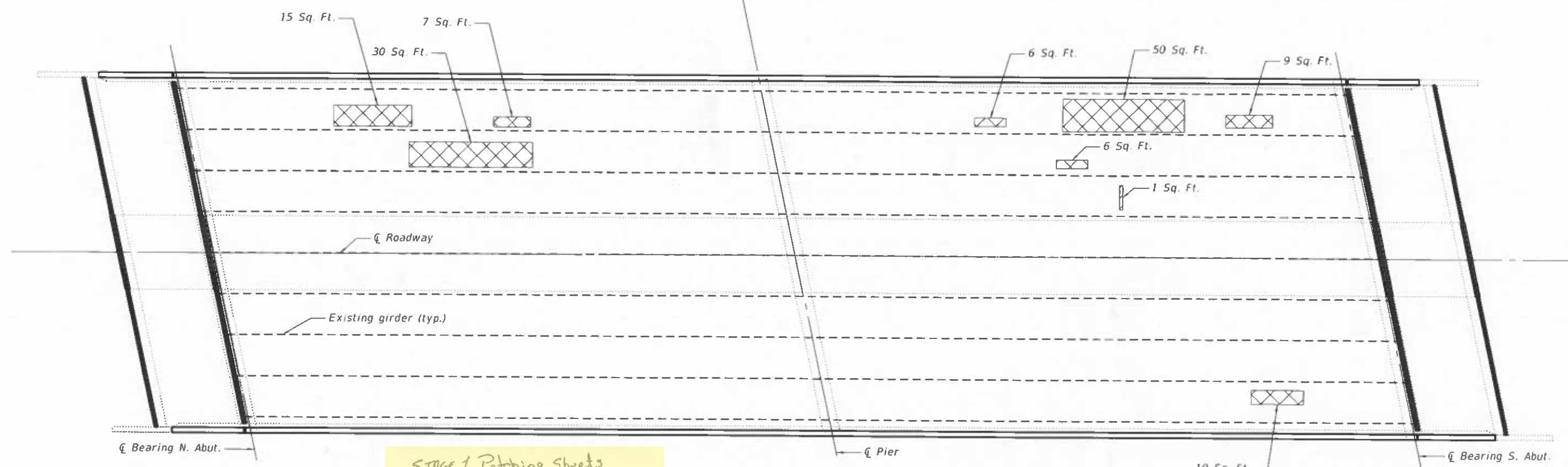
**Kaskaskia**  
 Engineering Group, L.L.C.  
 1011 S. Main St., Suite 200  
 Moline, Illinois 61704  
 (309) 241-1111  
 www.kaskaskia.com

USER NAME =	DESIGNED - MMC	REVISED -
PLOT SCALE =	CHECKED - JW	REVISED -
PLOT DATE =	DRAWN - MMC	REVISED -
	CHECKED - JW	REVISED -

**STATE OF ILLINOIS**  
**DEPARTMENT OF TRANSPORTATION**

**SUPERSTRUCTURE JOINT REPLACEMENT DETAILS**  
**STRUCTURE NO. 098-0065**  
 SHEET 3 OF 9 SHEETS

F.A.I. RTE.	SECTION	COUNTY	TOTAL SHEETS	SHEET NO.
88	(195-24B)BJR	WHITESIDE	31	16
CONTRACT NO. 64S04				
ILLINOIS FED. AID PROJECT				



STAGE 1 Patching Sheets  
Included  
STAGE 2 Work Was Deleted

PLAN VIEW

**LEGEND**

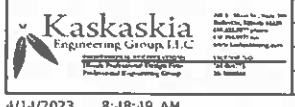
- Deck Slab Repair (Full Depth, Type I)
- Deck Slab Repair (Full Depth, Type II)

**Note:**  
Quantity shown in the Bill of Material for Deck Slab Repair (Partial) is an estimate based on existing conditions at the time of the estimate. Final quantities and locations shall be determined by the Engineer in the field.

**BILL OF MATERIAL**

Item	Unit	Total
Deck Slab Repair (Full Depth, Type I)	Sq. Yd.	1
Deck Slab Repair (Full Depth, Type II)	Sq. Yd.	15
Deck Slab Repair (Partial)	Sq. Yd.	51

MODEL: Default  
FILE NAME: P:\22-1005.04 W04 Bridge Rehab\0\_ID01\Structures\0980065-64504-006-DeckSlabRepairs.dgn  
4/11/2022 8:14:10 AM



USER NAME *	DESIGNED - MLC	REVISED -
PLOT SCALE *	CHECKED - JW	REVISED -
PLOT DATE *	DRAWN - MLC	REVISED -
	CHECKED - JW	REVISED -

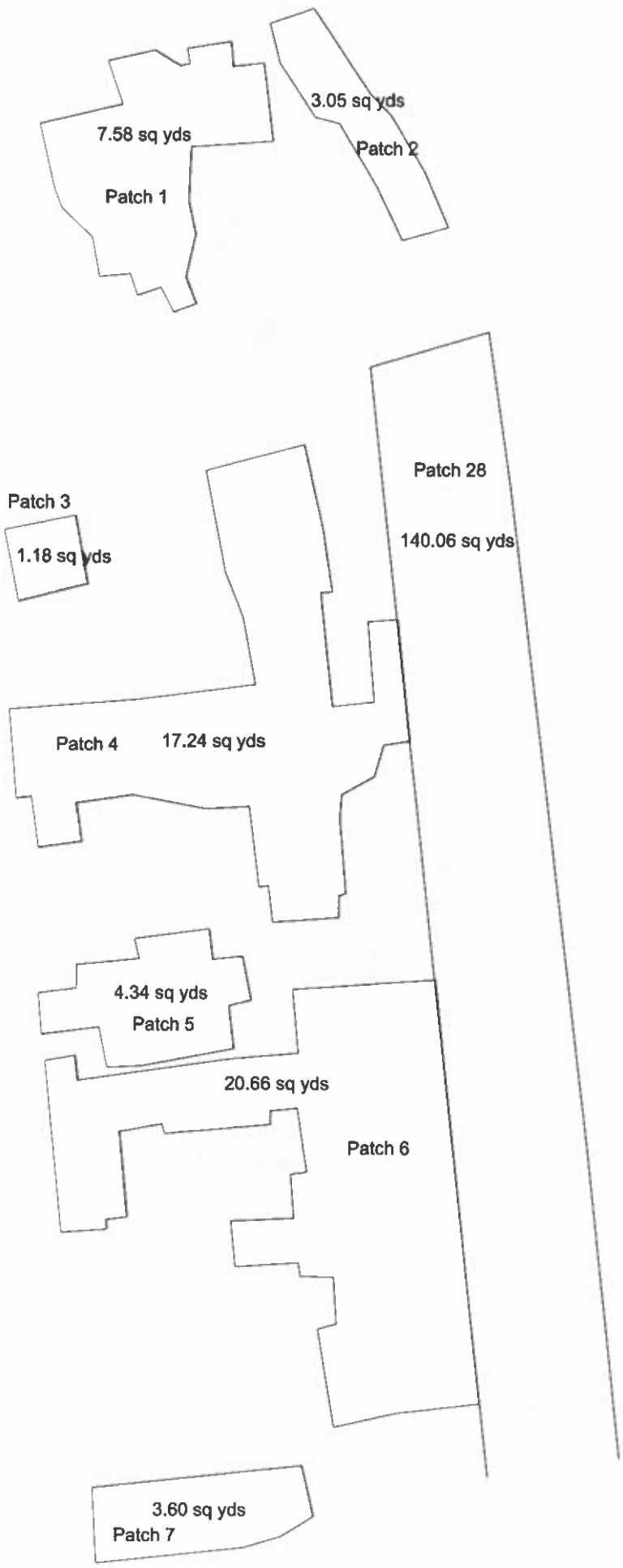
STATE OF ILLINOIS  
DEPARTMENT OF TRANSPORTATION

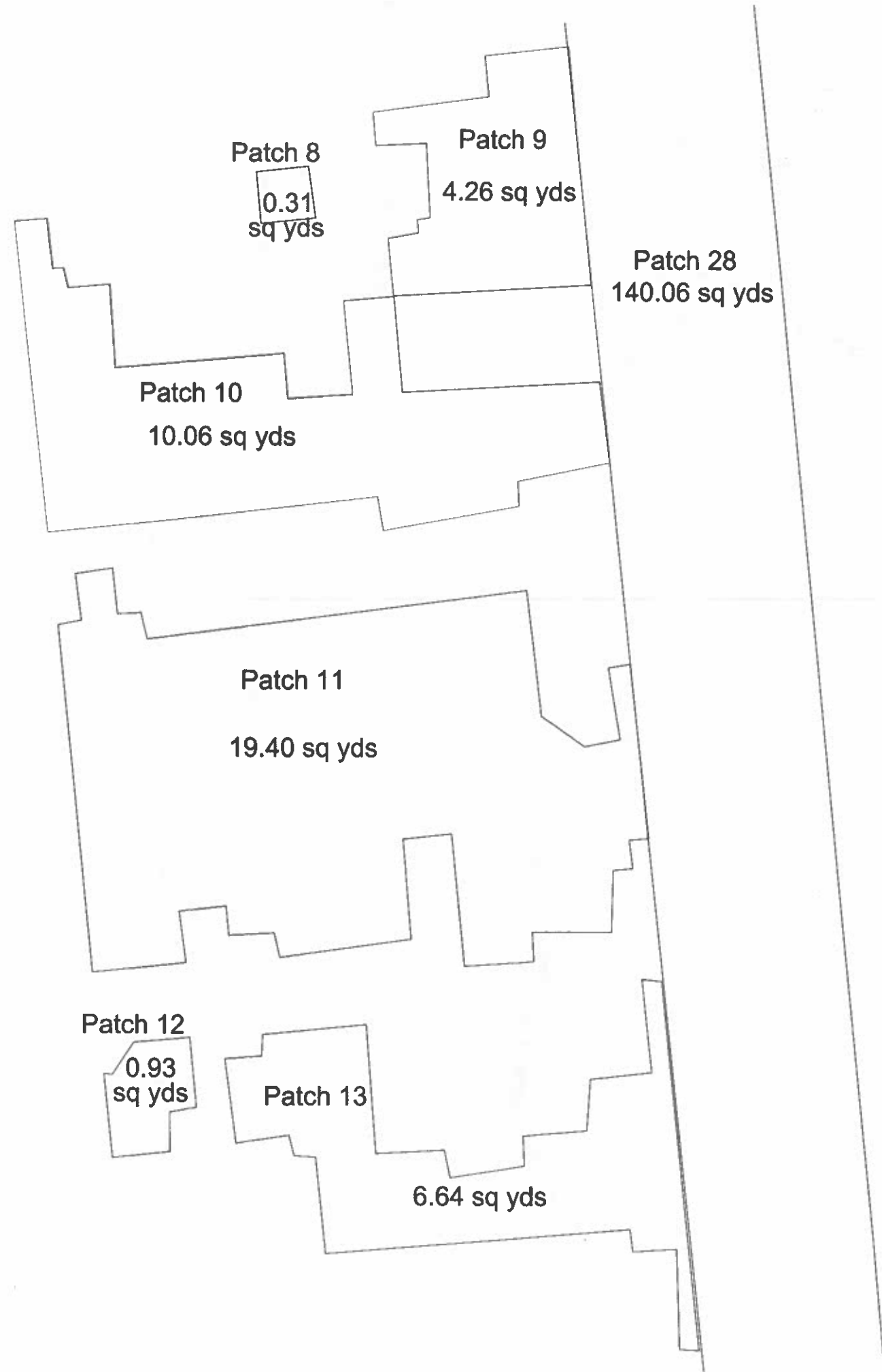
DECK SLAB REPAIRS  
STRUCTURE NO. 098-0065

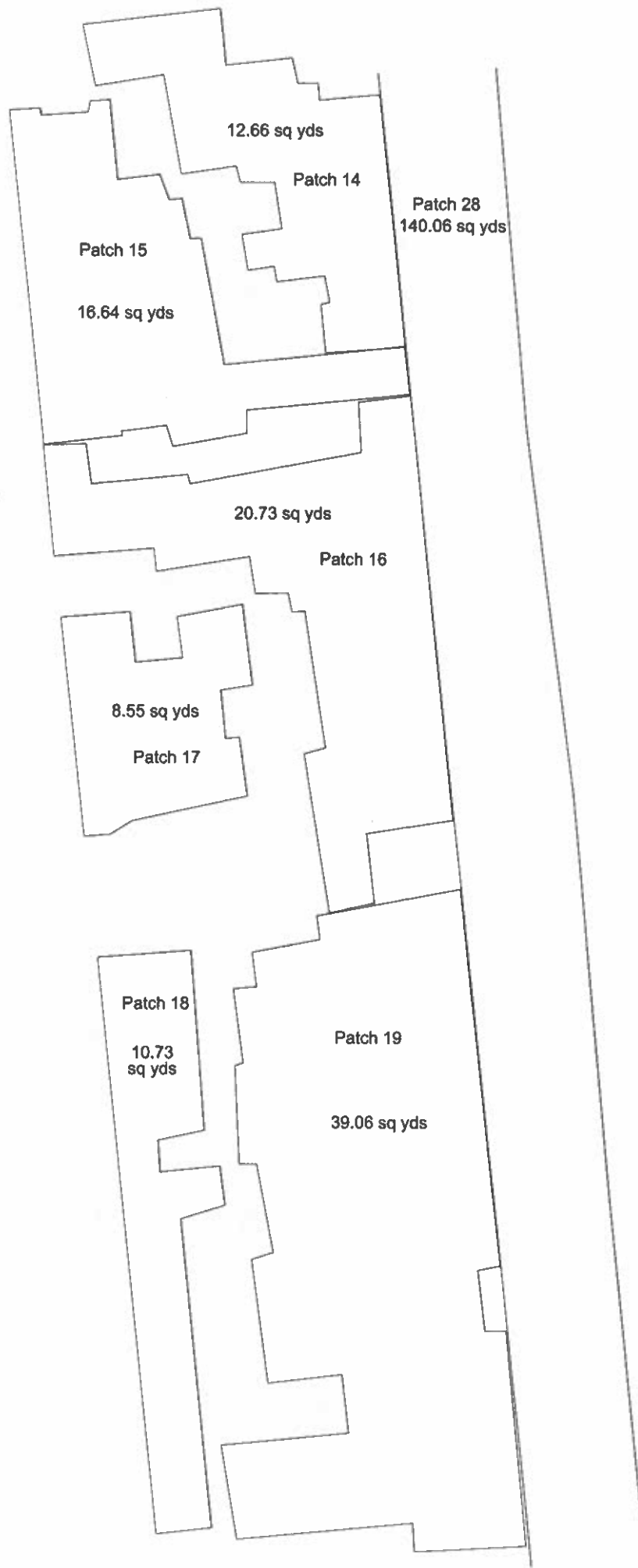
SHEET 6 OF 9 SHEETS

F.A.I. RTE.	SECTION	COUNTY	TOTAL SHEETS	SHEET NO.
88	(195-2HB)BJR	WHITESIDE	31	19
CONTRACT NO. 64S04				
ILLINOIS FED. AID PROJECT				

NB STAGE 1  
PATCHING







Patch 20  
1.16  
sq yds

Patch 28  
140.06 sq yds

Patch 22  
23.12 sq yds

Patch 21  
16.33 sq yds

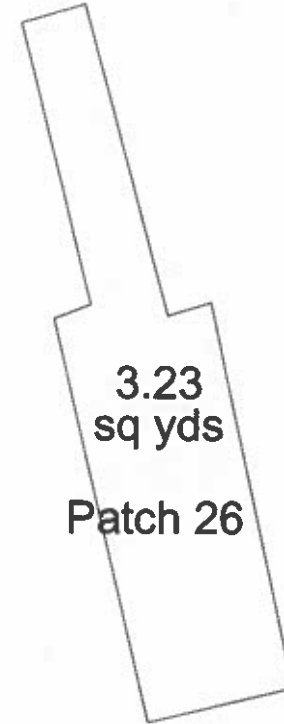
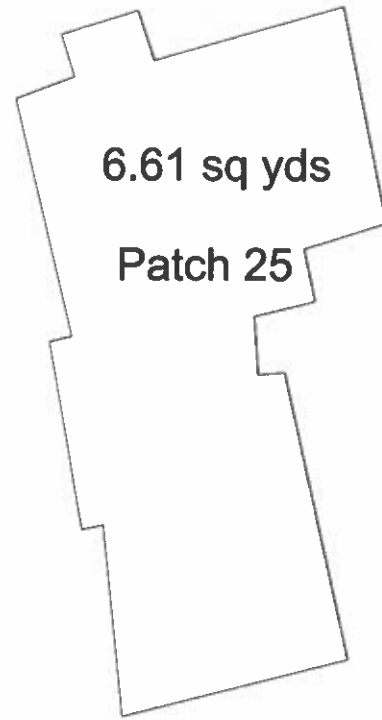
Patch 23  
10.33 sq yds





Patch 24

0.57  
sq yds



Patch 27

0.58  
sq yds

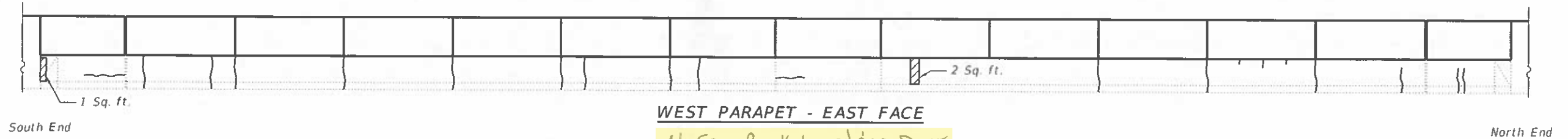
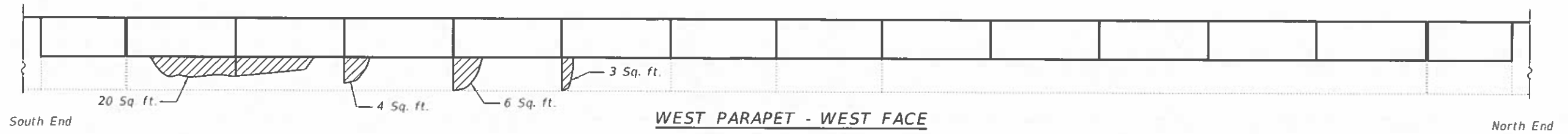


Total SQ YDS : 409.88 sq yds

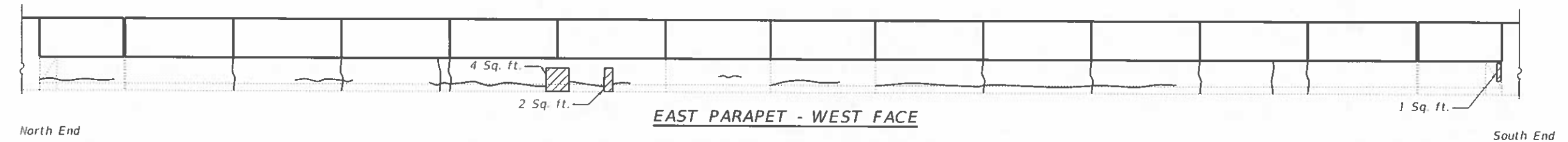
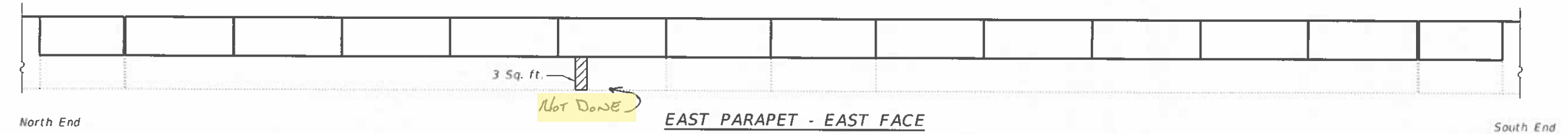
- measured points with survey equipment
- calculated areas and total using microstation

Calc By: JK 10/15/2023

Checked by:



No Epoxy Crack Injection Done  
No Shotcrete Done



*Note:*  
Quantities of Structural Repair of Concrete (Depth Equal to or Less Than 5 Inches) and Epoxy Crack Injection are an estimate based on existing conditions at the time of the field visit (March 2023). Final quantities shall be determined by the Engineer in the field.

**LEGEND**

- Structural Repair of Concrete (Depth Equal to or Less Than 5 Inches)
- Epoxy Crack Injection

**BILL OF MATERIAL**

Item	Unit	Total
Structural Repair of Concrete (Depth Equal to or Less Than 5 Inches)	Sq. Ft.	46
Epoxy Crack Injection	Foot	173

MODEL: Default  
FILE NAME: P:\172-1005.04\_W04\_Bridge\_Rehab0\_IDOT\Structures\0980065-64504-006b-parapet\_repairs.dgn  
4/12/2023 8:48:51 AM



USER NAME	DESIGNED - MLC	REVISED -
PLOT SCALE	CHECKED - MMC	REVISED -
PLOT DATE	DRAWN - MLC	REVISED -
	CHECKED - MMC	REVISED -

**STATE OF ILLINOIS  
DEPARTMENT OF TRANSPORTATION**

**PARAPET CONCRETE REPAIR  
STRUCTURE NO. 098-0065**

SHEET 8 OF 9 SHEETS

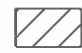
P.A. RTE.	SECTION	COUNTY	TOTAL SHEETS	SHEET NO.
88	(195-21B)BJR	WHITESIDE	31	21
CONTRACT NO. 64SD4				

ILLINOIS FED. AID PROJECT



**SOUTH ABUTMENT**  
(Looking South)

**LEGEND**

 Structural Repair of Concrete (Depth Equal to or Less than 5 Inches)

**BILL OF MATERIAL**

Item	Unit	Total
Structural Repair of Concrete (Depth Equal to or Less than 5 Inches)	Sq. Ft.	7

MODEL: Default  
FILE NAME: P:\172-1005.04 WO4 Bridge Rehab\10\_IDOT\Structures\0980065-64S04-008-AbutmentRepairs.dgn



1000 N. Maple St., Suite 200  
Bella Vista, Illinois 62810  
618.481.8777  
www.kaskaskia.com

USER NAME	DESIGNED - MLC	REVISED -
	CHECKED - JW	REVISED -
PLOT SCALE	DRAWN - MLC	REVISED -
PLOT DATE	CHECKED - JW	REVISED -

**STATE OF ILLINOIS  
DEPARTMENT OF TRANSPORTATION**

**ABUTMENT REPAIRS  
STRUCTURE NO. 098-0065**

SHEET 9 OF 9 SHEETS

F.A.I. RTE.	SECTION	COUNTY	TOTAL SHEETS	SHEET NO.
88	(185-2HB)BJR	WHITESIDE	31	22
CONTRACT NO. 64S04				
ILLINOIS FED. AID PROJECT				