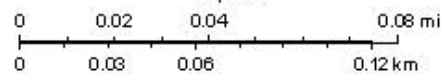


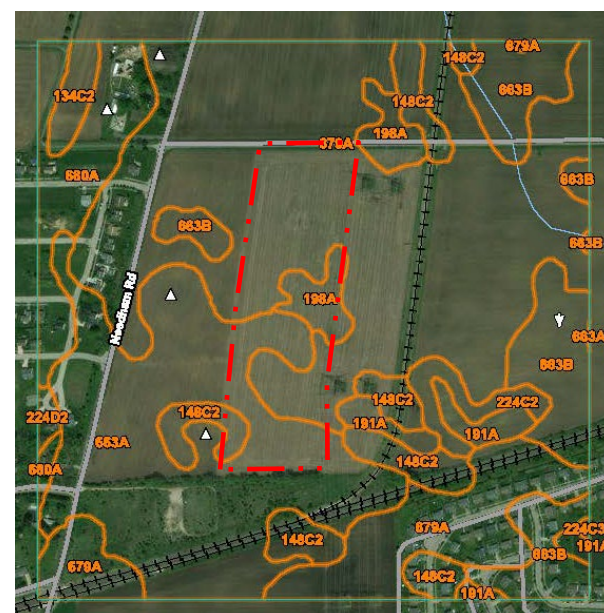
Restoration Plan – Total Site 21.23 Acres



1939 Aerial Photo



2017 Aerial Photo



USGS Soil Map (Soil Description Table Below)



1800 Historic Vegetation Map

CODE	148C2	198A	663A	679A
NAME	Proctor Silt Loam	Elburn Silt Loam	Clare Silt Loam	Blackberry Silt Loam
Drainage Class	Well Drained	Somewhat Poorly Drained	Moderately Well Drained	Moderately Well Drained
Permeability	Moderate	Moderate to Moderately Rapid	Moderate to Moderately Rapid	Moderate to Moderately Rapid
Distance to Groundwater	More than 80"	12-24"	24-42"	24-48"
Frequency of Flooding	None	None	None	None
Frequency of Ponding	None	None	None	None
Hydric Soil Classification	No	No	No	No
Ecological Classification 1	Outwash Prairie - 95%	Outwash Prairie - 93%	Moist Glacial Drift Upland Prairie - 95%	Outwash Prairie - 98%
Ecological Classification 2	N/A	Wet Outwash Prairie - 7%	Ponded Depressional Sedge Meadow - 5%	Wet Outwash Prairie - 2%
Ecological Classification 3	N/A	Ponded Depressional Sedge Meadow - 7%	Wet Outwash Prairie - 5%	Ponded Depressional Sedge Meadow - 2%
Historic Vegetation	Prairie Grasses	Prairie Grasses	Prairie Grasses	Tall Prairie Grasses

Plano Prairie Restoration
0014-20-KEND
 Faxon Road (East of Needham Rd)
 Plano, IL 60545

County: Kendall (41.673761, -88.511367)
 Team Section: 352 - Yorkville

Designed By: Andy Stahr

Planting Plan

- Approximate Property Line
- Dry-Mesic Prairie – 6.0 Acres
- Mesic Prairie – 9.83 Acres
- Mesic-Wet Prairie – 1.75 Acres
- Topographic Contour Lines (2' Intervals)
- Soil Type Divider Lines
- 20' Wide Turfed Fire Break – 2.14 Acres



11/24/2020



District 3 – 700 E Norris Drive, Ottawa, IL 61350
 Bureau of Operations – (815) 434-8445