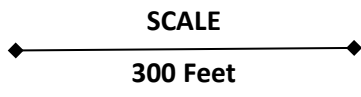




Site Plan – Total Site 7.04 Acres



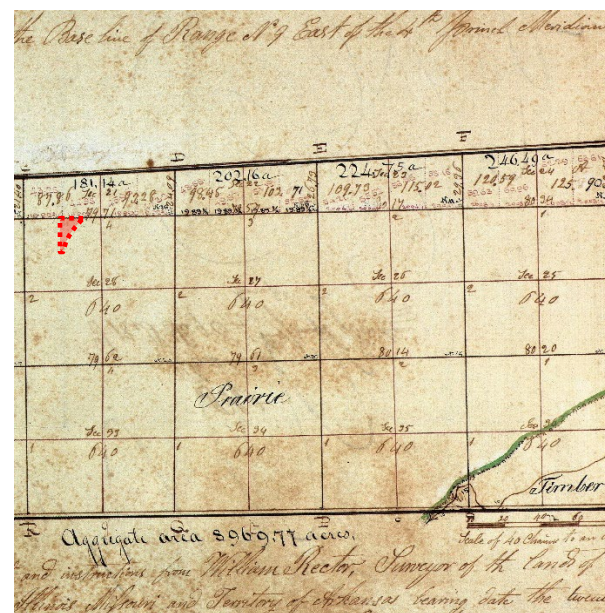
1941 Aerial Photo



2015 Aerial Photo



USGS Soil Map (Soil Description Table Below)



1822 Historic Vegetation Map

CODE	86B	8107A+
NAME	Osco Silt Loam	Sawmill Silt Loam
Drainage Class	Well Drained	Poorly Drained
Permeability	Moderate	Moderate
Distance to Groundwater	42-72"	More than 80"
Frequency of Flooding	None	Occasional
Frequency of Ponding	None	Frequent
Hydric Soil Classification	No	Yes
Ecological Classification 1	Loess Upland Prairie - 90%	Loess Upland Prairie - 90%
Ecological Classification 2	Wet Loess Upland Prairie – 9%	Wet Loess Upland Prairie – 9%
Ecological Classification 3	Wet Floodplain Sedge Meadow – 1%	Wet Floodplain Sedge Meadow – 1%
Historic Vegetation	Tall Prairie Grass	Grasses & Trees

### Indian Boundary Prairie

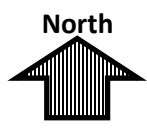
0001-82-BURE  
 IL 26 & 2600 N Avenue  
 South of Ohio, IL 61349

County: Bureau (41.523221, -89.465434)  
 Team Section: 345 - Princeton

Drawn By: Andy Stahr

#### Site Plan

- Approximate Property Line
- 780 Topographic Contour Lines (10' Intervals)
- Soil Type Divider Lines



01/10/2024



District 3 – 700 E Norris Drive, Ottawa, IL 61350  
 Bureau of Operations – (815) 434-8445