

STATE OF ILLINOIS
DEPARTMENT OF TRANSPORTATION

F.A.P. RTE.	SECTION	COUNTY	TOTAL SHEETS	SHEET NO.
317	(137,102)SLP,PP	FULTON	22	1
		ILLINOIS	CONTRACT NO. 68H92	

INDEX OF SHEETS

- 1 COVER SHEET
- 2 GENERAL NOTES
- 3-5 SUMMARY OF QUANTITIES
- 6 SCHEDULE OF QUANTITIES
- 7 ALIGNMENT SHEET
- 8 TYPICAL SECTIONS
- 9 MAXIMUM WIDTH SIGNING DETAIL
- 10-11 TRAFFIC CONTROL PLANS
- 12 REMOVAL PLAN
- 13 PLAN
- 14 SLOPE STEP DETAIL
- 15 BOX CULVERT EXTENSION DETAILS
- 16-22 CROSS SECTIONS

HIGHWAY STANDARDS

000001-08	701001-02	701311-03	725001-01
280001-07	701006-05	701321-18	780001-05
630001-13	701201-05	701901-09	782006-01
630301-09	701301-04	704001-08	BLR 21-9

DESIGN DESIGNATION

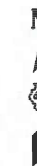
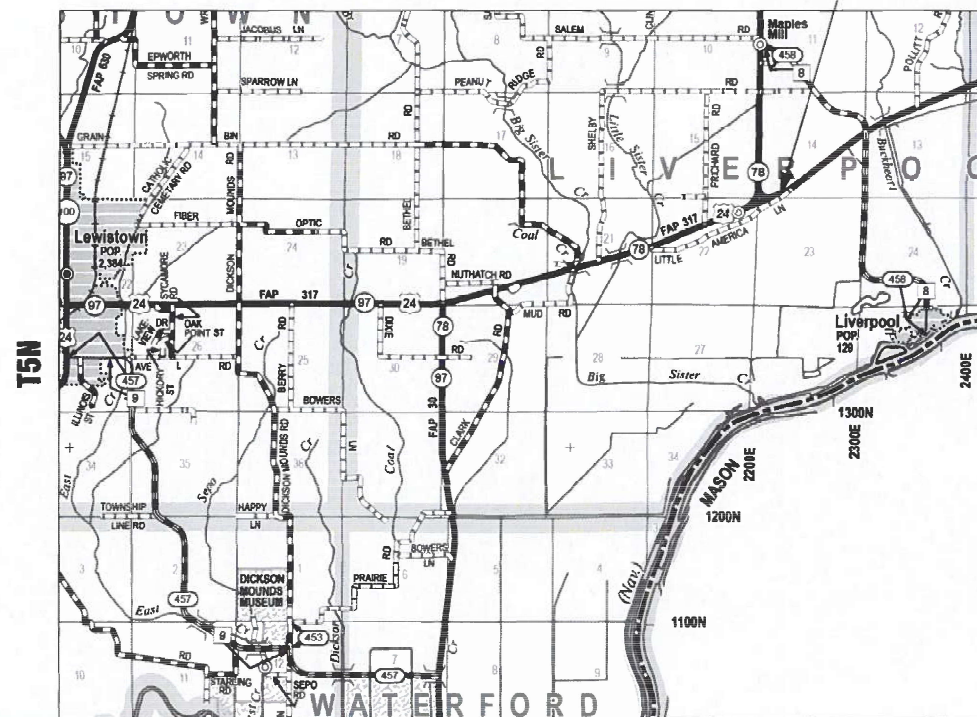
US 24: OTHER PRINCIPAL ARTERIAL
ADT: 2150 (2021)
SU: 170
MU: 80

PROPOSED
HIGHWAY PLANS

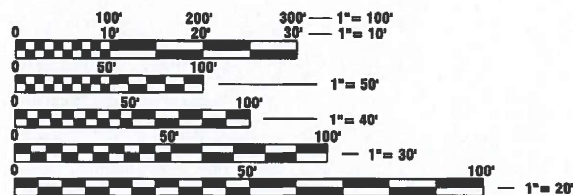
FAP ROUTE 317 (US 24)
SECTION (137,102)SLP,PP
SLOPE STABILIZATION AND PAVEMENT REPAIR
FULTON COUNTY

C-94-011-24

LOCATION OF IMPROVEMENT



LOCATION OF SECTION INDICATED THUS: - [thick black line] -



FULL SIZE PLANS HAVE BEEN PREPARED USING STANDARD ENGINEERING SCALES. REDUCED SIZED PLANS WILL NOT CONFORM TO STANDARD SCALES. IN MAKING MEASUREMENTS ON REDUCED PLANS, THE ABOVE SCALES MAY BE USED.

J.U.L.I.E.
JOINT UTILITY LOCATION INFORMATION FOR EXCAVATORS
1-800-892-0123
OR 811

PROJECT ENGINEER: BEN TELLEFSON
PROJECT MANAGER: WILL MOSER
CATALOG NO. 036458-00D
CONTRACT NO. 68H92

MARK C. LEE DATE

REGISTERED PROFESSIONAL ENGINEER
STATE OF ILLINOIS NO. 062-060864
LICENSE EXPIRES NOVEMBER 30, 2025

GROSS LENGTH = 529.0 FT. = 0.100 MILE
NET LENGTH = 529.0 FT. = 0.100 MILE

KLINGNER
& ASSOCIATES, P.C.

Engineers • Architects • Surveyors
www.klingner.com

Galesburg, Illinois
49 North Prairie Street
309.342.4042

Quincy, IL Hannibal, MO
Burlington, IA Peella, IA Columbia, MO
Davenport, IA Carbondale, IL

DESIGN FIRM NO. 184-2738

PROJECT DESCRIPTION:
SLOPE REPAIR ALONG US 24.

STATE OF ILLINOIS
DEPARTMENT OF TRANSPORTATION

SUBMITTED May 14 2024
Wesley L. Darneth
REGIONAL ENGINEER

June 28, 2024 [Signature]
ENGINEER OF DESIGN AND ENVIRONMENT

June 28, 2024 [Signature]
DIRECTOR OF HIGHWAYS PROJECT IMPLEMENTATION

PRINTED BY THE AUTHORITY
OF THE STATE OF ILLINOIS

RATES OF APPLICATION TABLE

AGGREGATE (SURFACE, BASE, SUBBASE, OR BACKFILL)	1.60 TON / CU YD
STONE DUMPED RIPRAP	1.50 TON / CU YD

GENERAL NOTES

1. THE THICKNESS OF BITUMINOUS MIXTURES SHOWN ON THE PLANS IS THE NOMINAL THICKNESS. DEVIATIONS FROM THE NOMINAL THICKNESS WILL BE PERMITTED WHEN SUCH DEVIATIONS OCCUR DUE TO THE IRREGULARITIES IN THE EXISTING SURFACE OR BASE ON WHICH THE BITUMINOUS MIXTURE IS PLACED.
2. THE CONTRACTOR SHALL PROTECT AND CAREFULLY PRESERVE ALL PROPERTY MARKERS AND MONUMENTS UNTIL THE OWNER, AUTHORIZED AGENT, OR LAND SURVEYOR HAS WITNESSED OR OTHERWISE REFERENCED THEIR LOCATION. WHERE SECTION OR SUB-SECTION MONUMENTS ARE ENCOUNTERED, THE ENGINEER SHALL BE NOTIFIED BEFORE SUCH MONUMENTS ARE REMOVED. THE CONTRACTOR SHALL BE RESPONSIBLE FOR HAVING AN AUTHORIZED SURVEYOR RE-ESTABLISH ANY SECTION OR SUB-SECTION MONUMENTS DESTROYED BY HIS OPERATIONS.
3. IN ADDITION TO FIELD SURVEYS, PLAN DIMENSIONS AND DETAILS RELATIVE TO THE EXISTING FACILITIES HAVE BEEN TAKEN FROM EXISTING PLANS AND ARE SUBJECT TO CONSTRUCTION VARIATIONS. IT SHALL BE THE CONTRACTORS RESPONSIBILITY TO VERIFY SUCH DIMENSIONS AND DETAILS IN THE FIELD. SUCH VARIATIONS SHALL NOT BE A CAUSE FOR ADDITIONAL COMPENSATION DUE TO A CHANGE IN THE SCOPE OF WORK; HOWEVER, THE CONTRACTOR WILL BE PAID FOR THE QUANTITY ACTUALLY FURNISHED AT THE UNIT PRICE BID FOR THE WORK. THE THICKNESS OF BITUMINOUS MIXTURES SHOWN ON THE PLANS IS THE NOMINAL.
4. ANY REFERENCE TO A STANDARD IN THESE PLANS SHALL BE INTERPRETED TO MEAN THE EDITION AS INDICATED BY THE SUB-NUMBER IN THE INDEX OF SHEETS OR THE COPY OF THE STANDARD INCLUDED IN THESE PLANS.
5. ANY EXISTING ROAD SIGNS THAT INTERFERE WITH CONSTRUCTION WILL BE REMOVED OR RELOCATED AS DIRECTED BY THE ENGINEER. AFTER THE CONSTRUCTION IS COMPLETED, THE CONTRACTOR WILL REPLACE THE SIGNS AS DIRECTED BY THE ENGINEER. THIS WORK WILL NOT BE PAID SEPARATELY BUT SHALL BE CONSIDERED INCIDENTAL TO THE CONTRACT AND NO COMPENSATION WILL BE ALLOWED.
6. SHOULD THE CONTRACTOR REQUEST OLD/EXISTING STRUCTURE PLANS, THEY CAN CONTACT THE PROJECT ENGINEER OR TEAM ENGINEER AS SHOWN ON THE COVER SHEET.
7. ALL SAW CUTS, NECESSARY TO COMPLETE THE WORK DETAILED IN THESE PLANS, SHALL BE INCLUDED IN THE COST FOR THE VARIOUS PAY ITEMS INVOLVED.
8. THE FOLLOWING MIXTURE REQUIREMENTS ARE APPLICABLE FOR THIS PROJECT:

LOCATION(S):	HMA SURF CSE	SHOULDERS
MIXTURE USE(S):	SHOULDERS TOP LIFT	LOWER LIFTS
AC/PG:	PG 64-22	PG 64-22
DESIGN AIR VOIDS:	4.0% @ N DESIGN=50	4.0% @ N DESIGN=50
MIXTURE COMPOSITION: (GRADATION MIXTURE)	IL 9.5	IL 19.0
FRICTION AGGREGATE	MIX "D"	N/A
QUALITY	QA/QC	QA/QC
SUB-LOT SIZE	N/A	N/A

ENVIRONMENTAL REVIEWS

PRIOR TO THE USE OF ANY PROPOSED BORROW AREAS, USE AREAS (TEMPORARY ACCESS ROADS, DETOURS, RUN-AROUNDS, ETC.) AND/OR WASTE AREAS, THE CONTRACTOR SHALL FILE THE REQUIRED ENVIRONMENTAL RESOURCE REQUEST SURVEYS ACCORDING TO SECTION 107.22 OF THE STANDARD SPECIFICATIONS. THESE SURVEYS ARE REQUIRED IN ORDER FOR THE DEPARTMENT TO CONDUCT CULTURAL AND BIOLOGICAL RESOURCE SURVEYS FOR THE PROPOSED SITE.

THE REQUIRED ENVIRONMENTAL RESOURCE DOCUMENTATION SHALL INCLUDE THE FOLLOWING:

- * BDE FORM 2289 (BORROW SITE REVIEW)
- * BDE FORM 2290 (WASTE/USE AREA REVIEW)
- * A LOCATION MAP SHOWING THE SIZE LIMITS AND LOCATION OF THE USE AREA
- * COLOR PHOTOGRAPHS DEPICTING THE USE AREA
- * BORROW AREA ENTRY AGREEMENT FORM - D4 P10101

PRIOR TO ANY WASTE MATERIALS BEING REMOVED FROM THE CONSTRUCTION SITE THE REQUIRED ENVIRONMENTAL RESOURCE SURVEYS SHALL BE OBTAINED AND FILLED BY THE CONTRACTOR. EXCESS WASTE PRODUCTS REMOVED FROM THE CONSTRUCTION SITE SHALL BE DISPOSED OF AS REQUIRED IN SECTION 202.03 OF THE STANDARD SPECIFICATIONS.

ANY PROTRUDING METAL BARS SHALL BE REMOVED PRIOR TO THE DISPOSAL OF BROKEN CONCRETE AT APPROVED DISPOSAL SITES.

PLEASE NOTE THAT A MINIMUM OF FOUR WEEKS SHALL BE ALLOWED FOR THE DISTRICT TO OBTAIN THE REQUIRED WASTE SITE ENVIRONMENTAL CLEARANCES AND SIX WEEKS FOR THE REQUIRED BORROW SITE ENVIRONMENTAL CLEARANCES.

MODEL: D:\p\h\...
 FILE NAME: P:\Caleburg\2\Files\13081\DOT - DIST - 4 - PTB 201-023\Work Order 08 - FY 2023 Slope Repair\18_Transportation\US 24 Little America\GeoD_Sheets\3_etc\GenNotes.dgn



USER NAME = aschaefer	DESIGNED -	REVISED -
PLOT SCALE = 100,0000' / in.	DRAWN -	REVISED -
PLOT DATE = 3/25/2024	CHECKED -	REVISED -
	DATE -	REVISED -

**STATE OF ILLINOIS
DEPARTMENT OF TRANSPORTATION**

**FAP 317 (US 24)
GENERAL NOTES**

SCALE: NONE SHEET 1 OF 1 SHEETS STA. N/A TO STA. N/A

F.A.P. RTE.	SECTION	COUNTY	TOTAL SHEETS	SHEET NO.
317	(137,102)SLP,PP	FULTON	22	2
CONTRACT NO. 68H92				
ILLINOIS FED. AID PROJECT				

MODEL Path: P:\Caledonia\2023\2023\DOT - DIST 4 - PTB 201-023\Work Order 08 - FY 2023 Slope Repair\18_Transportation\US 24 Little America\CAD_Sheets\35_ahs-Summary.dgn

CODE NO.	ITEM	UNIT	TOTAL QUANTITY	CONSTRUCTION CODE						
				FULTON COUNTY						
				100% STATE						
				0005						
				RURAL						
20100500	TREE REMOVAL, ACRES	ACRE	0.5	0.5						
20201200	REMOVAL AND DISPOSAL OF UNSUITABLE MATERIAL	CU YD	895	895						
20400800	FURNISHED EXCAVATION	CU YD	250	250						
20700110	POROUS GRANULAR EMBANKMENT	TON	4	4						
21001000	GEOTECHNICAL FABRIC FOR GROUND STABILIZATION	SQ YD	10	10						
28000400	PERIMETER EROSION BARRIER	FOOT	550	550						
28100107	STONE RIPRAP, CLASS A4	TON	1433	1433						
28100109	STONE RIPRAP, CLASS A5	TON	774	774						
28200200	FILTER FABRIC	SQ YD	1632	1632						
31101000	SUBBASE GRANULAR MATERIAL, TYPE B	TON	75	75						
44004250	PAVED SHOULDER REMOVAL	SQ YD	353	353						
48203029	HOT-MIX ASPHALT SHOULDERS, 8"	SQ YD	353	353						
50800105	REINFORCEMENT BARS	POUND	17	17						
54001001	BOX CULVERT END SECTIONS, CULVERT NO. 1	EACH	1	1						



USER NAME = aschaefer	DESIGNED -	REVISED -
	DRAWN -	REVISED -
PLOT SCALE = 40,0000 * / in.	CHECKED -	REVISED -
PLOT DATE = 5/6/2024	DATE -	REVISED -

**STATE OF ILLINOIS
DEPARTMENT OF TRANSPORTATION**

**FAP 317 (US 24)
SUMMARY OF QUANTITIES**

SCALE: NONE SHEET 1 OF 3 SHEETS STA. N/A TO STA. N/A

F.A.P. RTE.	SECTION	COUNTY	TOTAL SHEETS	SHEET NO.
317	(137,102)SLP,PP	FULTON	22	3
CONTRACT NO. 68H92				
ILLINOIS FED. AID PROJECT				

MODEL Path: \\s:\p\c\clsbu\2\filed\13081\DOT - DIST 4 - PTB 201-023\Work Order 08 - FY 2023 Slope Repair\18_Transportation\US 24 Little America\CAD_Sheets\35_dht-Summary.dgn
 FILE NAME: P:\C\clsbu\2\filed\13081\DOT - DIST 4 - PTB 201-023\Work Order 08 - FY 2023 Slope Repair\18_Transportation\US 24 Little America\CAD_Sheets\35_dht-Summary.dgn

CODE NO.	ITEM	UNIT	TOTAL QUANTITY	CONSTRUCTION CODE						
				FULTON COUNTY						
				100% STATE						
				0005						
				RURAL						
54002020	EXPANSION BOLTS 3/4 INCH	EACH	8	8						
54248510	CONCRETE COLLAR	CU YD	0.5	0.5						
* 63000003	STEEL PLATE BEAM GUARDRAIL, TYPE A, 9 FOOT POSTS	FOOT	425	425						
* 63100167	TRAFFIC BARRIER TERMINAL, TYPE 1 (SPECIAL) TANGENT	EACH	2	2						
63200310	GUARDRAIL REMOVAL	FOOT	525	525						
67100100	MOBILIZATION	L SUM	1	1						
70100450	TRAFFIC CONTROL AND PROTECTION, STANDARD 701201	L SUM	1	1						
70103815	TRAFFIC CONTROL SURVEILLANCE	CAL DA	5	5						
70106500	TEMPORARY BRIDGE TRAFFIC SIGNALS	EACH	1	1						
70106700	TEMPORARY RUMBLE STRIPS	EACH	6	6						
70107025	CHANGEABLE MESSAGE SIGN	CAL DA	14	14						
70300100	SHORT TERM PAVEMENT MARKING	FOOT	136	136						
70300150	SHORT TERM PAVEMENT MARKING REMOVAL	SQ FT	431	431						
70307120	TEMPORARY PAVEMENT MARKING - LINE 4"- TYPE IV TAPE	FOOT	1013	1013						

*= SPECIALTY ITEM



USER NAME = aschaefer	DESIGNED -	REVISED -
	DRAWN -	REVISED -
PLOT SCALE = 40,0000 */ in.	CHECKED -	REVISED -
PLOT DATE = 5/6/2024	DATE -	REVISED -

STATE OF ILLINOIS
DEPARTMENT OF TRANSPORTATION

FAP 317 (US 24) SUMMARY OF QUANTITIES			
SCALE: NONE	SHEET 2	OF 3 SHEETS	STA. N/A TO STA. N/A

F.A.P. RTE. 317	SECTION (137,102)SLP,PP	COUNTY FULTON	TOTAL SHEETS 22	SHEET NO. 4
ILLINOIS FED. AID PROJECT			CONTRACT NO. 68H92	

MODEL: Default
 FILE NAME: P:\Caleburg\2\116313081\DOT - DIST - 4 - PTB 201-023\Work Order 08 - FY 2023 Slope Repair\18_Transportation\US 24 Little America\CAD_Sheets\35_4th_Summary.dgn

CODE NO.	ITEM	UNIT	TOTAL QUANTITY	CONSTRUCTION CODE							
				FULTON COUNTY							
				100% STATE							
				0005 RURAL							
70307210	TEMPORARY PAVEMENT MARKING - LINE 24"- TYPE IV TAPE	FOOT	24	24							
70400100	TEMPORARY CONCRETE BARRIER	FOOT	725	725							
70600250	IMPACT ATTENUATORS, TEMPORARY (NON-REDIRECTIVE), TEST LEVEL 3	EACH	2	2							
* 72501000	TERMINAL MARKER - DIRECT APPLIED	EACH	2	2							
* 78001110	PAINT PAVEMENT MARKING - LINE 4"	FOOT	3039	3039							
* 78200005	GUARDRAIL REFLECTORS, TYPE A	EACH	7	7							
78300202	PAVEMENT MARKING REMOVAL - WATER BLASTING	SQ FT	1267	1267							
X5400504	PRECAST CONCRETE BOX CULVERTS 2'X2' (SPECIAL)	FOOT	9	9							
X7010202	TRAFFIC CONTROL AND PROTECTION, STANDARD 701321 (SPECIAL)	EACH	1	1							
X7011800	TRAFFIC CONTROL AND PROTECTION, STANDARD BLR 21	L SUM	1	1							
Z0001002	GUARDRAIL AGGREGATE EROSION CONTROL	TON	84	84							
Z0013798	CONSTRUCTION LAYOUT	L SUM	1	1							
* Z0054500	ROCK FILL	TON	13	13							

* = SPECIALTY ITEM



USER NAME = aschaefer	DESIGNED -	REVISED -
	DRAWN -	REVISED -
PLOT SCALE = 40,0000 */ in.	CHECKED -	REVISED -
PLOT DATE = 5/6/2024	DATE -	REVISED -

**STATE OF ILLINOIS
 DEPARTMENT OF TRANSPORTATION**

FAP 317 (US 24) SUMMARY OF QUANTITIES			
SCALE: NONE	SHEET 3	OF 3 SHEETS	STA. N/A TO STA. N/A

F.A.P. RTE. 317	SECTION (137,102)SLP,PP	COUNTY FULTON	TOTAL SHEETS 22	SHEET NO. 5
ILLINOIS FED. AID PROJECT			CONTRACT NO. 68H92	

TREE REMOVAL, ACRES 20100500

STATION TO STATION	SIDE	WIDTH	ACRE	
US 24				
537+50.00	1337+75.00	LT	VARIES	0.42
TOTAL				0.42
USE				0.50

FURNISHED EXCAVATION 20400800

STATION TO STATION	SIDE	WIDTH	CU YD	
US 24				
537+35.00	1338+05.00	LT	VARIES	246.7
TOTAL				246.7
USE				250

REMOVAL AND DISPOSAL OF UNSUITABLE MATERIAL 20201200

STATION TO STATION	SIDE	WIDTH	CU YD	
US 24				
537+35.00	1338+05.00	LT	VARIES	893.3
TOTAL				893.3
USE				895

RIPRAP SCHEDULE

STATION TO STATION	SIDE	WIDTH	28100107		28100109		28200200	
			STONE RIPRAP, CLASS A4	STONE RIPRAP, CLASS A5	FILTER FABRIC	TON	TON	SQ YD
US 24								
537+50.00	1337+75.00	LT	VARIES	1432.5	774	1631.6		
TOTALS				1432.5	774	1631.6		
USE				1433	774	1632		

SUBBASE GRANULAR MATERIAL, TYPE B 31101000

STATION TO STATION	SIDE	WIDTH	TON	
US 24				
537+35.00	1338+05.00	LT	7.2	74.9
TOTAL				74.9
USE				75

HOT-MIX ASPHALT SHOULDERS, 8" 48203029

STATION TO STATION	SIDE	WIDTH	SQ YD	
US 24				
537+35.00	1338+05.00	LT	6.0	352.7
TOTAL				352.7
USE				353

PAVED SHOULDER REMOVAL 44004250

STATION TO STATION	SIDE	WIDTH	SQ YD	
US 24				
537+35.00	1338+05.00	LT	VARIES	352.7
TOTAL				352.7
USE				353

CULVERT EXTENSION

LOCATION	SIDE	54001001		54248510		50800105		54248510		21001000		Z0054500		X5400504		20700110	
		BOX CULVERT END SECTIONS, CULVERT NO. 1	EXPANSION BOLTS 3/4 INCH	REINFORCEMENT BARS	CONCRETE COLLAR	GEOTECHNICAL FABRIC FOR GROUND STABILIZAION	+ ROCK FILL	PRECAST CONCRETE BOX CULVERTS 2'X2' (SPECIAL)	POROUS GRANULAR EMBANKMENT	EACH	EACH	POUND	CU YD	SQ YD	TON	FOOT	TON
541+25.22	LT	1	8	17	0.5	10	13	9	4								
TOTALS		1	8	17	0.5	10	13	9	4								

* INCLUDES ESTIMATED QUANTITIES. THEY MAY BE REDUCED, INCREASED, OR DELETED BY THE ENGINEER BASED ON ACTUAL FIELD CONDITIONS. NO WORK INVOLVING THESE ESTIMATED QUANTITIES SHALL BE PERFORMED WITHOUT THE DIRECTION AND APPROVAL OF THE ENGINEER.

GUARDRAIL SCHEDULE

STATION TO STATION	SIDE	63000003		63100167		78200005		72501000		Z0001002	
		SPBGR TYPE A 9' POSTS	TRAF BARRIER TERMINAL TYPE 1, SPECIAL (TANGENT)	GUARDRAIL REFLECTORS TYPE A	TERMINAL MARKERS DIRECT APPLIED	GUARDRAIL AGGREGATE EROSION CONTROL	FOOT	EACH	TON		
US 24											
537+38.61	1338+03.91	LT	425.0	2	7	2	84				
TOTALS			425	2	7	2	84				

GUARDRAIL REMOVAL 63200310

STATION TO STATION	SIDE	FOOT	
US 24			
537+38.61	1338+03.91	LT	524.3
TOTAL			524.3
USE			525

TEMPORARY PAVEMENT MARKING - LINE 4" - TYPE IV TAPE 70307120

STATION TO STATION	SIDE	DESCRIPTION	WHITE FOOT	
US 24				
534+80.00	1340+34.00	LT	EDGE LINE	1013.0
TOTAL				1013

SHORT TERM PAVEMENT MARKING REMOVAL 70300150

STATION TO STATION	SIDE	DESCRIPTION	SQ FT	
US 24 (STAGE 1)				
534+80.00	1340+34.00	LT	EDGE LINE	337.7
534+80.00		RT	STOP BAR	24.0
	1340+34.00	LT	STOP BAR	24.0
US 24 (SHORT TERM PAVEMENT MARKINGS)				
534+80.00	1340+34.00	LT	EDGE LINE	13.3
534+80.00	1340+34.00	CL	CENTERLINE	32.0
TOTAL				431.0
USE				431

TRAFFIC CONTROL AND PROTECTION

LOCATION	70400100		70600250	
	TEMP CONCRETE BARRIER	IMPACT ATTENUATORS TEMP NR, TL3	FOOT	EACH
US 24				
536+27.00	1338+92.00	725	2	
TOTALS		725	2	

TEMPORARY RUMBLE STRIPS 70106700

STATION	SIDE	EACH
US 24		
517+80.00	RT	1
522+80.00	RT	1
527+80.00	RT	1
1347+34.00	LT	1
1352+34.00	LT	1
1357+34.00	LT	1
TOTAL		6
USE		6

SHORT TERM PAVEMENT MARKING 70300100

STATION TO STATION	SIDE	DESCRIPTION	WHITE	YELLOW
			FOOT	
IL 94				
534+80.00	1340+34.00	LT	EDGE	40
534+80.00	1340+34.00	CL	NO - PASSING	96
TOTALS				96
USE				136

TEMPORARY PAVEMENT MARKING - LINE 24" - TYPE IV TAPE 70307210

STATION	SIDE	DESCRIPTION	WHITE FOOT
US 24			
534+80.00	RT	STOP LINE	12
1340+34.00	LT	STOP LINE	12
TOTAL			24
USE			24

PAINT PAVEMENT MARKING - LINE 4" 78001110

STATION TO STATION	SIDE	DESCRIPTION	WHITE	YELLOW
			FOOT	
US 24				
534+80.00	1340+34.00	LT	EDGE	1013.0
534+80.00	1340+34.00	CL	DOUBLE SOLID	2026.0
TOTALS				3039
USE				3039

PAVEMENT MARKING REMOVAL - WATER BLASTING 78300202

STATION TO STATION	SIDE	DESCRIPTION	SQ FT	
US 24				
534+80.00	1340+34.00	LT	EDGE	422.0
534+80.00	1340+34.00	CL	DOUBLE SOLID	845.0
TOTAL			1267.0	
USE			1267	

MISCELLANEOUS PAVING ITEMS SCHEDULE

NUMBER	ITEM	UNIT	TOTAL
28000400	PERIMETER EROSION BARRIER	FOOT	550

THIS SCHEDULE INCLUDES ESTIMATED QUANTITIES. THEY MAY BE REDUCED, INCREASED, OR DELETED BY THE ENGINEER BASED ON ACTUAL FIELD CONDITIONS. NO WORK INVOLVING THESE ESTIMATED QUANTITIES SHALL BE PERFORMED WITHOUT THE DIRECTION AND APPROVAL OF THE ENGINEER.

MODEL: Default; FILE NAME: P:\Caleburg\2013\13081 IDOT - DIST 4 - PTB 2013\2013\Work Order 08 - FY 2023\Shore Repair\18_Transportation\US 24 - Little America\CAD_Sheets\6_18u-Schedule.dgn



USER NAME = aschafer
 DESIGNED -
 DRAWN -
 CHECKED -
 DATE -

REVISED -
 REVISED -
 REVISED -
 REVISED -

DESIGNED -
 DRAWN -
 CHECKED -
 DATE -

**STATE OF ILLINOIS
 DEPARTMENT OF TRANSPORTATION**

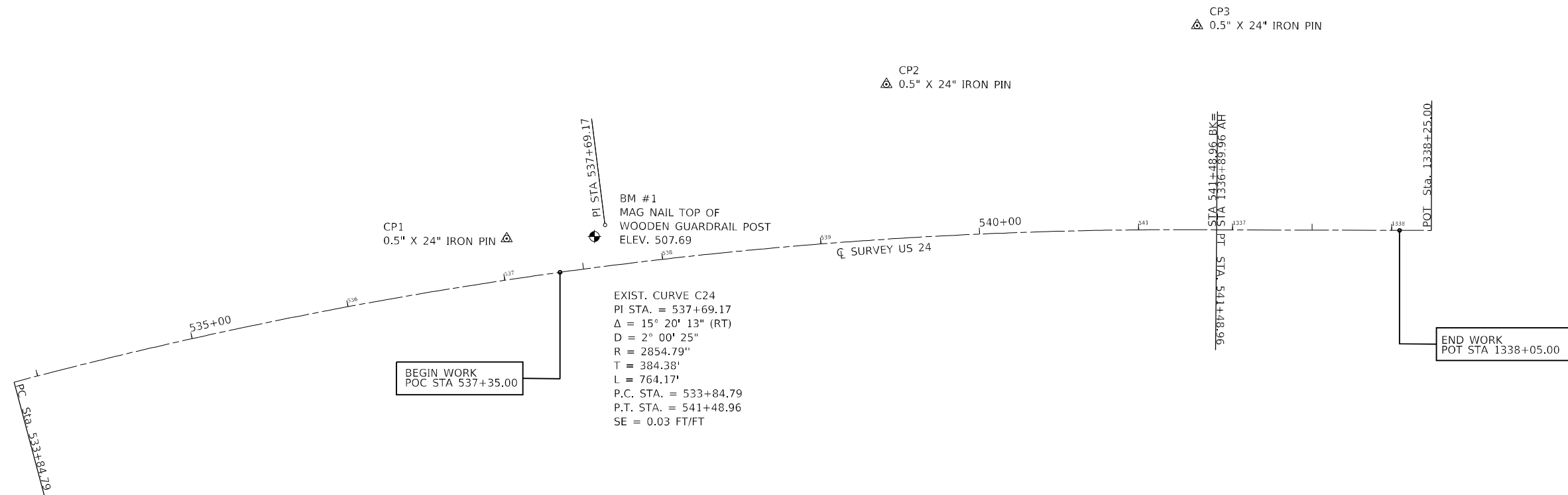
**FAP 317 (US 24)
 SCHEDULE OF QUANTITIES**

SCALE: NONE SHEET 1 OF 1 SHEETS STA. N/A TO STA. N/A

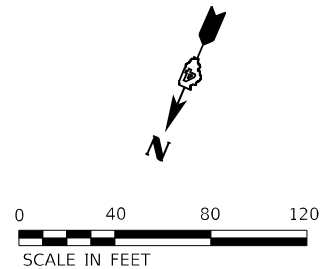
F.A.P. RTE. 317 SECTION (137,102)SLP,PP COUNTY FULTON TOTAL SHEETS 22 SHEET NO. 6 CONTRACT NO. 68H92 ILLINOIS FED. AID PROJECT

ALIGNMENT COORDINATES - US 24			
POINT	STATION	N	E
PC	533+84.79	1,363,145.7562	2,336,247.5156
BEGIN POC	537+35.00	1,362,944.4164	2,335,961.2365
PI	537+69.17	1,362,905.7743	2,335,947.2508
PT	541+48.96	1,362,753.7574	2,335,594.2054
END POT	1338+05.00	1,362,707.7731	2,335,488.7571
POT	1338+25.00	1,362,699.7786	2,335,470.4245

CONTROL POINT COORDINATES					
POINT	STATION	OFFSET	N	E	ELEVATION
BM #1	537+59.37	19.41' LT	1,362,915.1130	2,335,950.4590	507.69
CP1	537+04.99	25.73' LT	1,362,938.5110	2,336,000.4260	503.13
CP2	539+47.38	97.09' LT	1,362,753.7000	2,335,820.9810	488.27
CP3	541+36.31	128.24' LT	1,362,641.2280	2,335,657.0550	492.94



MODEL: D:\p\h\k\...
 FILE NAME: P:\Caleburg\2\filed13081\DOT - DIST 4 - PTB 201-023\Work Order 08 - FY 2023 Slope Repair\18_Transportation\US 24 Little America\CAD_Sheets\7_dtc-alignment.dwg



KLINGNER & ASSOCIATES, P.C.
 Engineers • Architects • Surveyors
 Galesburg, Illinois
49 North Park Street, Galesburg, IL 62541, USA
 309.343.4444

USER NAME = aschafer	DESIGNED -	REVISED -
PLOT SCALE = 80,0000 * / in.	DRAWN -	REVISED -
PLOT DATE = 3/25/2024	CHECKED -	REVISED -
	DATE -	REVISED -

**STATE OF ILLINOIS
 DEPARTMENT OF TRANSPORTATION**

**FAP 317 (US 24)
 ALIGNMENT SHEET**

SCALE: 1"=40' SHEET 1 OF 1 SHEETS STA. 533+84.79 TO STA. 1338+25.00

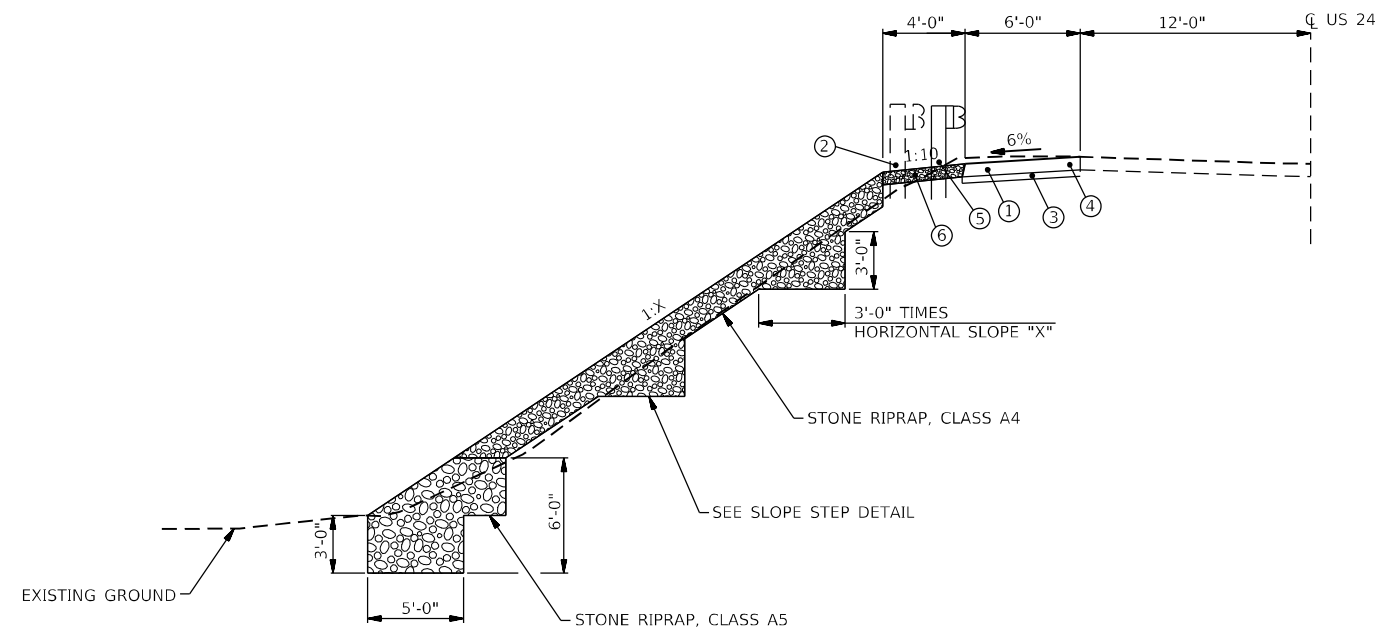
F.A.P. RTE. 317	SECTION (137,102)SLP,PP	COUNTY FULTON	TOTAL SHEETS 22	SHEET NO. 7
CONTRACT NO. 68H92				
ILLINOIS FED. AID PROJECT				

LEGEND

- ① PAVED SHOULDER REMOVAL (8" HMA)
- ② GUARDRAIL REMOVAL
- ③ PROPOSED SUBBASE GRANULAR MATERIAL, TYPE B, 4"
- ④ PROPOSED HOT-MIX ASPHALT SHOULDERS, 8"
- ⑤ PROPOSED STEEL PLATE BEAM GUARDRAIL, TYPE A, 9 FT POSTS
- ⑥ PROPOSED GUARDRAIL AGGREGATE EROSION CONTROL

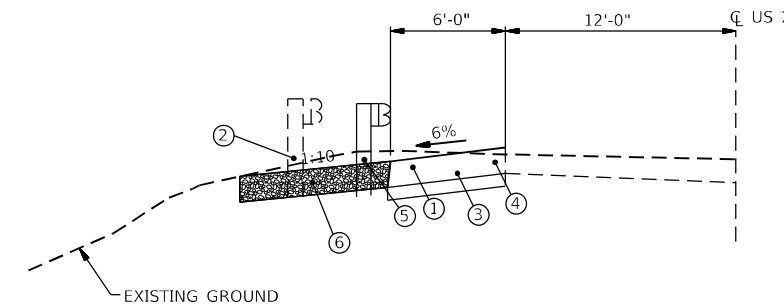
GUARDRAIL NOTES

PROPOSED GUARDRAIL
 STA. 537+38.61 TO STA. 1338+03.91 LT



PROPOSED TYPICAL SECTION

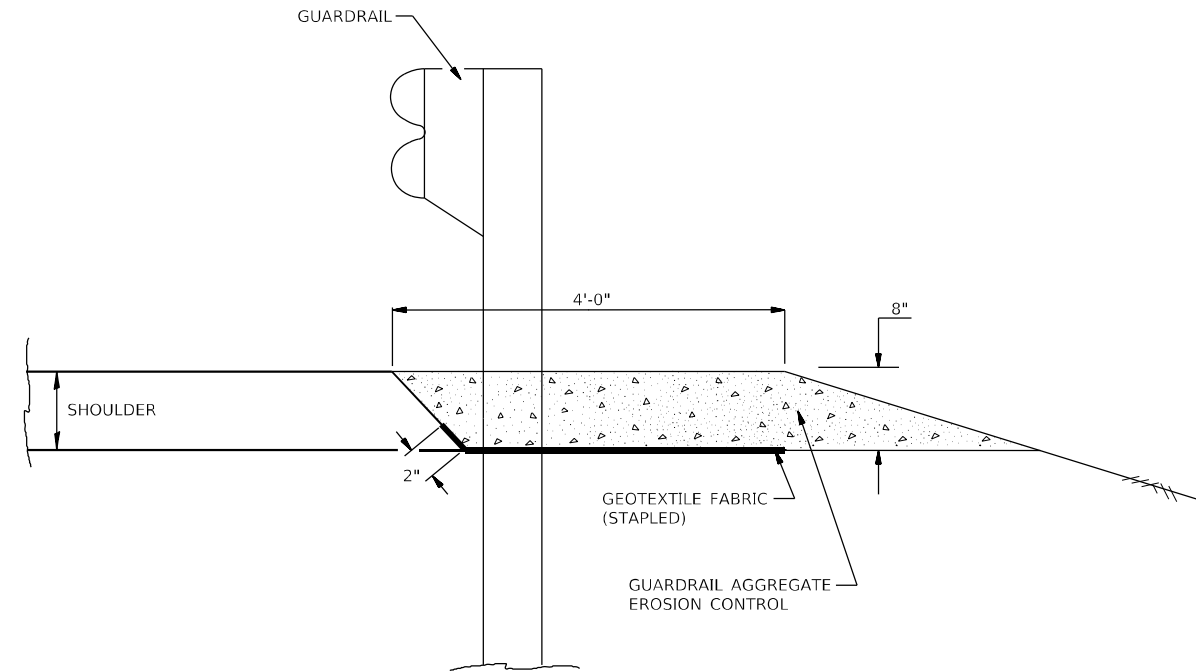
STA. 537+35.00 TO 1337+25.00 LT



PROPOSED TYPICAL SECTION

STA. 1337+25.00 TO STA. 1338+05.00 LT
 *TRANSITION SHOULDER GRADE TO MATCH EXISTING (STA. 1337+80.00 TO 1338+05.00 LT)

STATION EQUATIONS:
 STA 541+48.96 BK = STA 1336+89.96 AH



GUARDRAIL EROSION CONTROL DETAIL

GENERAL NOTES: GUARDRAIL AGGREGATE EROSION CONTROL

1. THIS WORK SHALL CONSIST OF GRADING AS NEEDED, FURNISHING AND INSTALLING GEOTEXTILE FABRIC AND STAPLES, AND FURNISHING, PLACING AND SHAPING CRUSHED AGGREGATE AROUND AND BEHIND STEEL PLATE BEAM GUARDRAIL POSTS IN ACCORDANCE WITH PLAN DETAILS.
2. BEFORE PLACING THE AGGREGATE AND THE GEOTEXTILE FABRIC, WEEDS AND GRASS SHALL BE REMOVED FROM THE AREA TO BE COVERED.
3. AFTER THE AREA HAS BEEN PREPARED, AND IN A DRY CONDITION, THE GEOTEXTILE FABRIC SHALL BE PLACED WITH A 12" MINIMUM OVERLAP. A KNIFE CUT FOR GUARDRAIL POST INSTALLATION IS NECESSARY.
4. THE AGGREGATE SHALL BE DEPOSITED, COMPACTED AND SHAPED BY EITHER MECHANICAL OR HAND METHODS, IN A MANNER REASONABLY TRUE TO LINE AND GRADE.
5. THE CONTRACTOR SHALL HAVE THE OPTION OF PLACING THE GUARDRAIL BEFORE OR AFTER THE GEOTEXTILE FABRIC AND AGGREGATE ARE IN PLACE. IF THE GUARDRAIL IS PLACED AFTER THE GEOTEXTILE FABRIC AND AGGREGATE, THEN ANY VOIDS MUST BE FILLED AND THE AGGREGATE RETURNED TO LINE AND GRADE.
6. MATERIALS SHALL MEET THE FOLLOWING REQUIREMENTS:
 - A. THE CRUSHED AGGREGATE SHALL BE CA1 GRADATION IN ACCORDANCE WITH ARTICLE 1004.01(C) OF THE STANDARD SPECIFICATIONS.
 - B. THE GEOTEXTILE FABRIC SHALL BE NONWOVEN FABRIC IN ACCORDANCE WITH ARTICLE 1080.02 OF THE STANDARD SPECIFICATIONS.

MODEL: Default
 FILE NAME: P:\Caleburg\2\filed13081\DOT - DIST - 4 - PTB 201-023\Work Order 08 - FY 2023 Slope Repair\18_Transportation\US 24 Little America\CAD_Sheets\8_4th-Typical.dgn

KLINGNER & ASSOCIATES, P.C.
 Engineers • Architects • Surveyors
 Galesburg, Illinois
 49 North Park Street
 Galesburg, IL 62541
 Phone: 309.343.1111
 Fax: 309.343.1112
 www.klingner.com

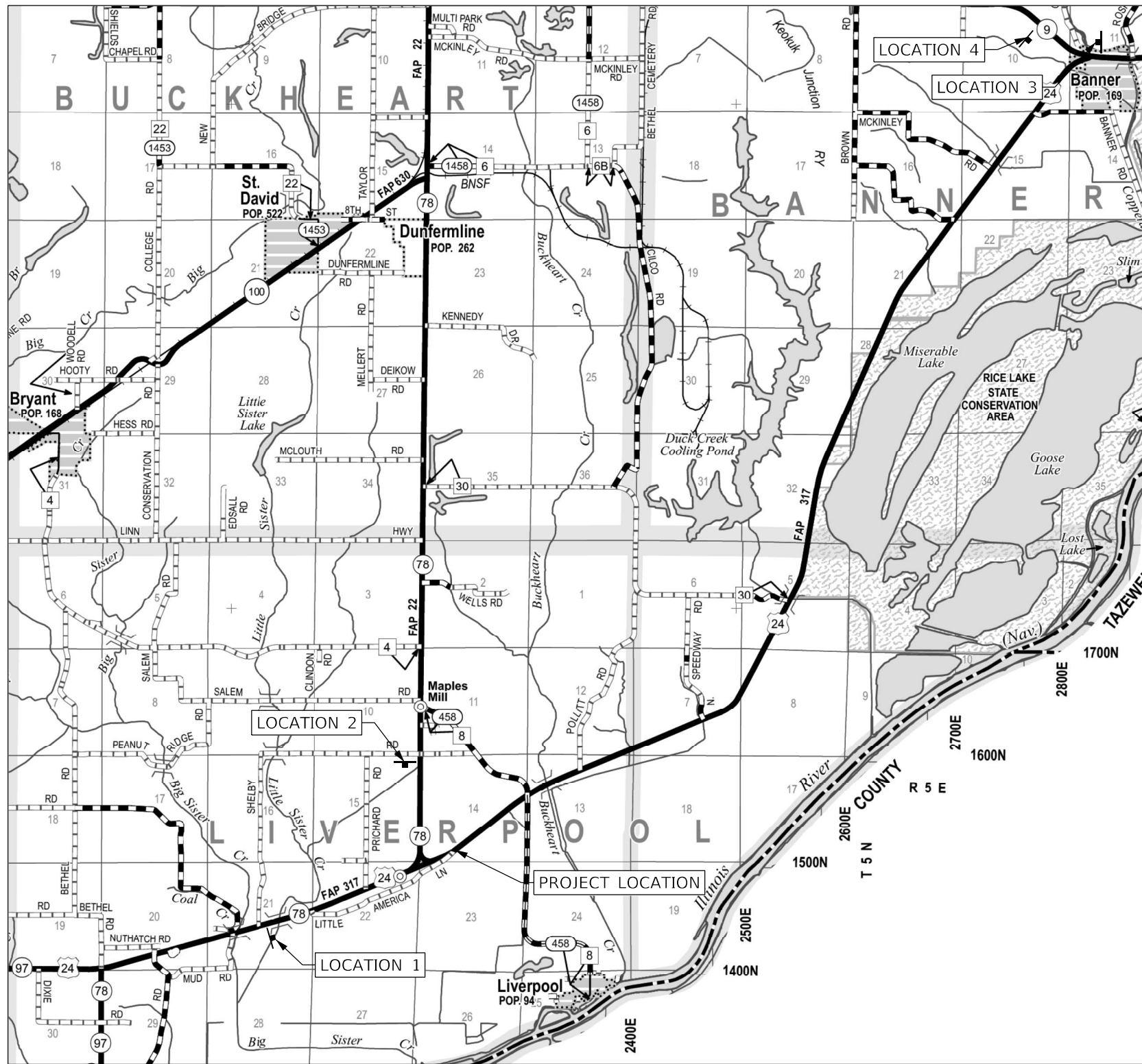
USER NAME = aschafer	DESIGNED -	REVISED -
PLOT SCALE = 20,0000 * / in.	DRAWN -	REVISED -
PLOT DATE = 3/25/2024	CHECKED -	REVISED -
	DATE -	REVISED -

**STATE OF ILLINOIS
 DEPARTMENT OF TRANSPORTATION**

**FAP 317 (US 24)
 TYPICAL SECTIONS**

SCALE: NONE SHEET 1 OF 1 SHEETS STA. N/A TO STA. N/A

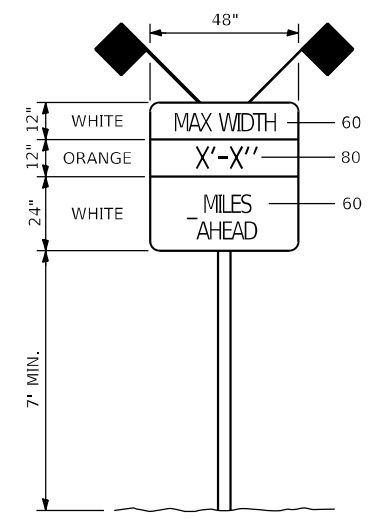
F.A.P. RTE.	SECTION	COUNTY	TOTAL SHEETS	SHEET NO.
317	(137,102)SLP,PP	FULTON	22	8
CONTRACT NO. 68H92				
ILLINOIS FED. AID PROJECT				



GENERAL NOTES:

ACTUAL MAXIMUM WIDTH ARE TO BE MEASURED BY THE ENGINEER AFTER TEMPORARY CONCRETE BARRIER WALL IS PLACED FOR STAGE 1.
 ALL SIGNS SHALL BE POST MOUNTED IN ACCORDANCE WITH ARTICLE 701.14 OF THE STANDARD SPECIFICATIONS FOR ROAD AND BRIDGE CONSTRUCTION.

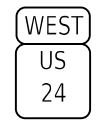
LOCATION	SIGN(S)	DISTANCE
1 US 24 EB AT N SHELBY RD	A/C	1.9 MILES
2 IL 97 SB AT E SHELBY RD	A/C	1.2 MILES
3 US 24 WB AT IL 9	A/D	10.2 MILES
4 IL 9 EB AT US 24	A/D	10.3 MILES



SIGN A
(WIDTH RESTRICTION SIGN)



SIGN C
"EAST" - M3-2 (2412)
"US 24" - M1-100 (2424)



SIGN D
"WEST" - M3-4 (2412)
"US 24" - M1-100 (2424)

MODEL: D:\p\1\13081_1\DOT - DIST - 4 - PTB 201-031\Work Order 08 - FY 2023 Slope Repair\18_Transportation\US 24 Little America\CAD_Sheets\009-Box\10th_Signage.dgn
 FILE NAME: P:\Caledonia\13081_1\DOT - DIST - 4 - PTB 201-031\Work Order 08 - FY 2023 Slope Repair\18_Transportation\US 24 Little America\CAD_Sheets\009-Box\10th_Signage.dgn

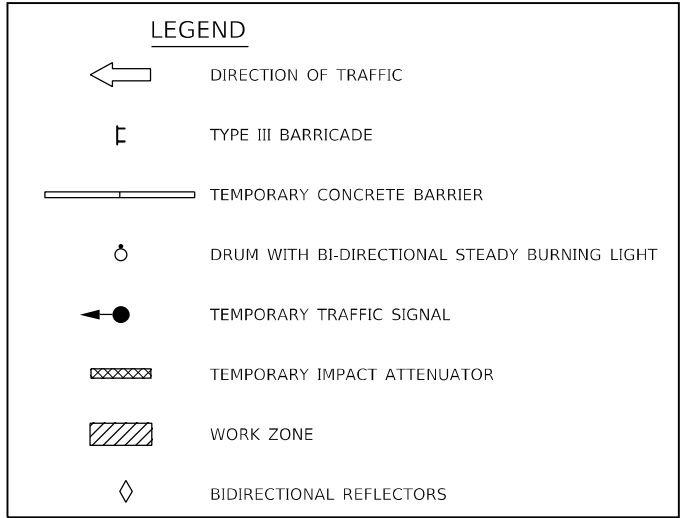
KLINGNER & ASSOCIATES, P.C.
 Engineers • Architects • Surveyors
 Galesburg, Illinois

USER NAME = aschafer	DESIGNED -	REVISED -
PLOT SCALE = 40,0000' / in.	DRAWN -	REVISED -
PLOT DATE = 5/6/2024	CHECKED -	REVISED -
	DATE -	REVISED -

**STATE OF ILLINOIS
DEPARTMENT OF TRANSPORTATION**

FAP 317 (US 24)	
MAXIMUM WIDTH SIGNING DETAIL	
SCALE: None	SHEET 1 OF 1 SHEETS STA. N/A TO STA. N/A

F.A.P. RTE.	SECTION	COUNTY	TOTAL SHEETS	SHEET NO.
317	(137,102)SLP,PP	FULTON	22	9
CONTRACT NO. 68H92				
ILLINOIS FED. AID PROJECT				



STAGE CONSTRUCTION SEQUENCE

THE FOLLOWING STAGE CONSTRUCTION SEQUENCE IS FOR INFORMATION ONLY. THE CONTRACTOR IS RESPONSIBLE FOR PLANNING AND EXECUTING THIS PROJECT WHICH SHALL BE SUBJECT TO THE APPROVAL OF THE ENGINEER.

PRE-STAGE 1:
 CLOSE LITTLE AMERICA LANE UTILIZING TRAFFIC CONTROL AND PROTECTION STANDARD BLR 21.
 REMOVE EXISTING TREES.
 UTILIZE TRAFFIC CONTROL AND PROTECTION STANDARD 701006.

STAGE 1:
 SET UP STAGE 1 TRAFFIC CONTROL.
 REMOVE EXISTING SHOULDER AND EXISTING GUARDRAIL.
 GRADE AND CONSTRUCT SLOPE STEPS AND INSTALL RIPRAP.
 EXTEND EXISTING CULVERT.
 CONSTRUCT HOT-MIX ASPHALT SHOULDERS, 8".
 PLACE NEW STEEL PLATE BEAM GUARDRAIL, TYPE A, 9 FOOT POSTS.
 REMOVE STAGE 1 TRAFFIC CONTROL.

STAGE 2:
 INSTALL PAVEMENT MARKINGS.
 UTILIZE TRAFFIC CONTROL AND PROTECTION STANDARD 701201.

GENERAL NOTES

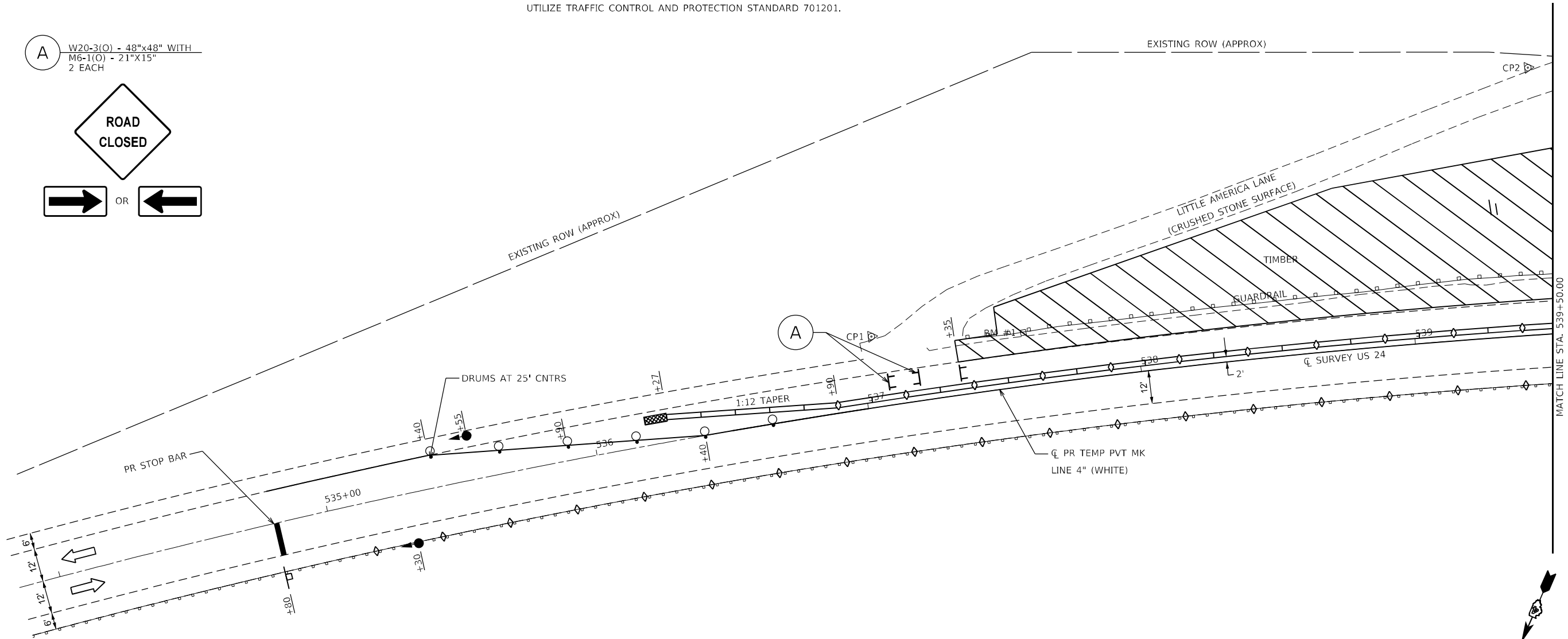
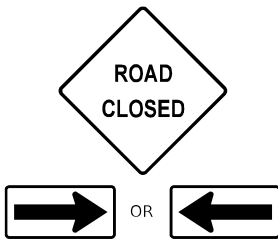
VERTICAL PANELS, DRUMS WITH STEADY BURNING LIGHTS, TYPE III BARRICADES, SIGNS, DETECTOR LOOPS, AND TYPE B BIDIRECTIONAL GUARDRAIL AND BARRIER REFLECTORS SHALL BE INCLUDED IN THE COST OF THE PAY ITEM "TRAFFIC CONTROL AND PROTECTION, STANDARD 701321 (SPECIAL)"

THIS WORK SHALL SUPPLEMENT AND BE IN ACCORDANCE WITH HIGHWAY STANDARD 701321.

THE CONTRACTOR SHALL PLACE MAX WIDTH SIGNS BEFORE IMPLEMENTING ANY STAGE TRAFFIC CONTROL.

REMOVE ALL CONFLICTING PAVEMENT MARKINGS, UTILIZING STANDARD 701201.

(A) W20-3(O) - 48"x48" WITH
 M6-1(O) - 21"x15"
 2 EACH



ADVANCE SIGNAGE, DETECTOR LOOPS, AND RUMBLE STRIPS IN ACCORDANCE WITH HIGHWAY STANDARD 701321.



MODEL: D:\proj\317\317.dwg; FILE: NAME: P:\Caledonia\317\317.dwg; DATE: 5/7/2024; TIME: 10:30:00 AM; USER: aschaefer; PROJECT: FAP 317 (US 24); SHEET: 1 OF 2; SCALE: 1"=20';

KLINGNER & ASSOCIATES, P.C.
 Engineers - Architects - Surveyors
 Galesburg, Illinois

USER NAME = aschaefer	DESIGNED -	REVISED -
PLOT SCALE = 40,0000 * / in.	DRAWN -	REVISED -
PLOT DATE = 5/7/2024	CHECKED -	REVISED -
	DATE -	REVISED -

DESIGNED -	REVISED -
DRAWN -	REVISED -
CHECKED -	REVISED -
DATE -	REVISED -

**STATE OF ILLINOIS
 DEPARTMENT OF TRANSPORTATION**

**FAP 317 (US 24)
 TRAFFIC CONTROL PLANS**

SCALE: 1"=20' SHEET 1 OF 2 SHEETS STA. 534+30.00 TO STA. 539+50.00

F.A.P. RTE.	SECTION	COUNTY	TOTAL SHEETS	SHEET NO.
317	(137,102)SLP,PP	FULTON	22	10
CONTRACT NO. 68H92				
ILLINOIS FED. AID PROJECT				

STAGE CONSTRUCTION SEQUENCE

THE FOLLOWING STAGE CONSTRUCTION SEQUENCE IS FOR INFORMATION ONLY. THE CONTRACTOR IS RESPONSIBLE FOR PLANNING AND EXECUTING THIS PROJECT WHICH SHALL BE SUBJECT TO THE APPROVAL OF THE ENGINEER.

PRE- STAGE 1:
 CLOSE LITTLE AMERICA LANE UTILIZING TRAFFIC CONTROL AND PROTECTION STANDARD BLR 21.
 REMOVE EXISTING TREES.
 UTILIZE TRAFFIC CONTROL AND PROTECTION STANDARD 701006.

STAGE 1:
 SET UP STAGE 1 TRAFFIC CONTROL.
 REMOVE EXISTING SHOULDER AND EXISTING GUARDRAIL.
 GRADE AND CONSTRUCT SLOPE STEPS AND INSTALL RIPRAP.
 EXTEND EXISTING CULVERT.
 CONSTRUCT HOT-MIX ASPHALT SHOULDERS, 8".
 PLACE NEW STEEL PLATE BEAM GUARDRAIL, TYPE A, 9 FOOT POSTS.
 REMOVE STAGE 1 TRAFFIC CONTROL.

STAGE 2:
 INSTALL PAVEMENT MARKINGS.
 UTILIZE TRAFFIC CONTROL AND PROTECTION STANDARD 701201.

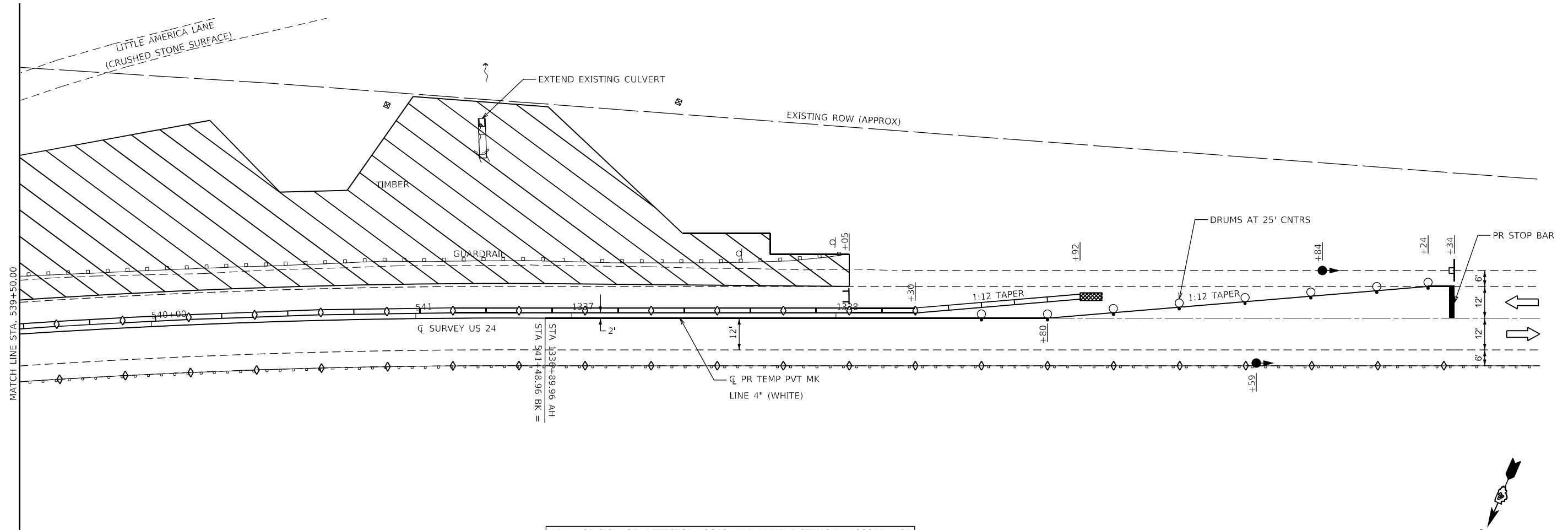
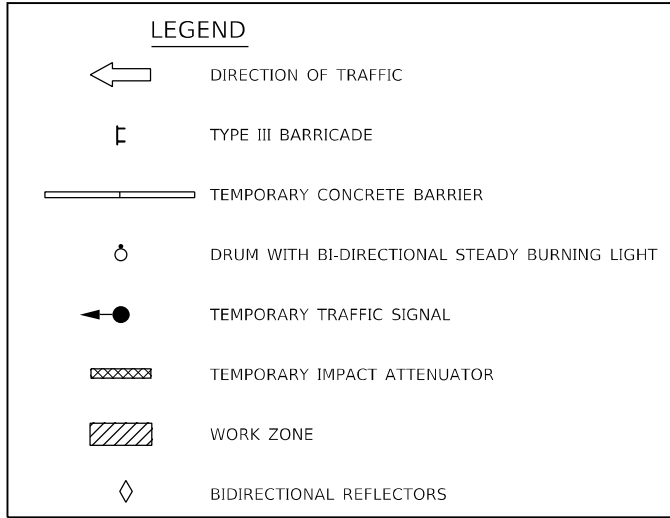
GENERAL NOTES

VERTICAL PANELS, DRUMS WITH STEADY BURNING LIGHTS, TYPE III BARRICADES, SIGNS, DETECTOR LOOPS, AND TYPE B BIDIRECTIONAL GUARDRAIL AND BARRIER REFLECTORS SHALL BE INCLUDED IN THE COST OF THE PAY ITEM "TRAFFIC CONTROL AND PROTECTION, STANDARD 701321 (SPECIAL)"

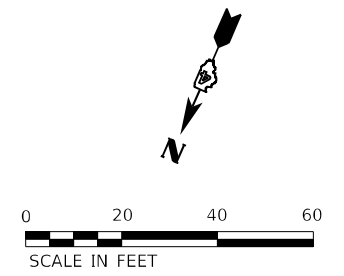
THIS WORK SHALL SUPPLEMENT AND BE IN ACCORDANCE WITH HIGHWAY STANDARD 701321.

THE CONTRACTOR SHALL PLACE MAX WIDTH SIGNS BEFORE IMPLEMENTING ANY STAGE TRAFFIC CONTROL.

REMOVE ALL CONFLICTING PAVEMENT MARKINGS, UTILIZING STANDARD 701201.



ADVANCE SIGNAGE, DETECTOR LOOPS, AND RUMBLE STRIPS IN ACCORDANCE WITH HIGHWAY STANDARD 701321.



MODEL: D:\p\h\k\...
 FILE NAME: P:\Caleburg\2\filed13081\DOT - DIST - 4 - PTB 201-023\Work Order 08 - FY 2023 Slope Repair\18_Transportation\US 24_Little America\CAD_Sheets\11_PntTCEP_Stage10 - 1b.dgn

KLINGNER & ASSOCIATES, P.C.
 Engineers • Architects • Surveyors
 Galesburg, Illinois

USER NAME = aschafer	DESIGNED -	REVISED -
PLOT SCALE = 40,0000 * / in.	DRAWN -	REVISED -
PLOT DATE = 5/6/2024	CHECKED -	REVISED -
	DATE -	REVISED -

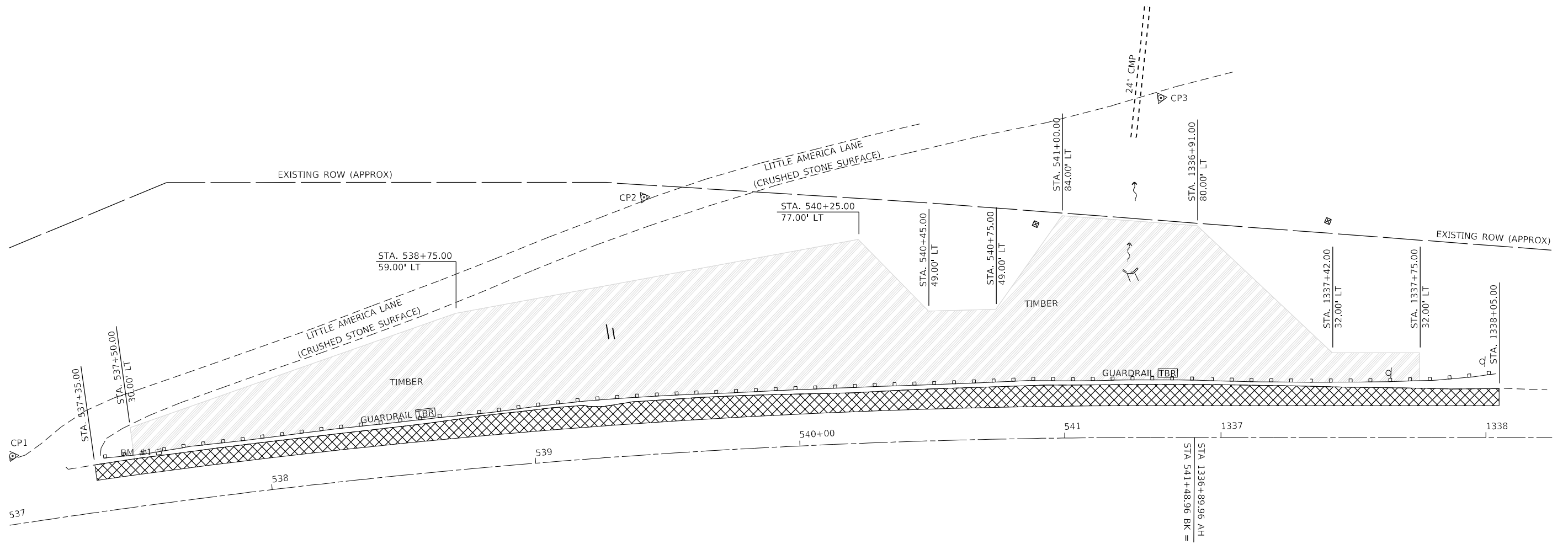
**STATE OF ILLINOIS
 DEPARTMENT OF TRANSPORTATION**

**FAP 317 (US 24)
 TRAFFIC CONTROL PLANS**


SCALE: 1"=20' SHEET 2 OF 2 SHEETS STA. 539+50.00 TO STA. 1340+34.00

F.A.P. RTE.	SECTION	COUNTY	TOTAL SHEETS	SHEET NO.
317	(137,102)SLP,PP	FULTON	22	11
CONTRACT NO. 68H92				
ILLINOIS FED. AID PROJECT				

MODEL: Default
 FILE NAME: P:\Caleburg\2 Files\13081 IDOT - DIST 4 - PTB 201-023\Work Order 08 - FY 2023 Slope Repair\18_Transportation\US 24 Little America\CAD_Sheets\12_Removal.dwg



REMOVAL LEGEND

-  PAVED SHOULDER REMOVAL
-  TREE REMOVAL
-  TO BE REMOVED

KLINGNER & ASSOCIATES, P.C.
 Engineers • Architects • Surveyors
 Galesburg, Illinois
 49 North Park Street
 Galesburg, IL 62541

USER NAME = aschafer	DESIGNED -	REVISED -
PLOT SCALE = 40,0000 * / in.	DRAWN -	REVISED -
PLOT DATE = 3/25/2024	CHECKED -	REVISED -
	DATE -	REVISED -

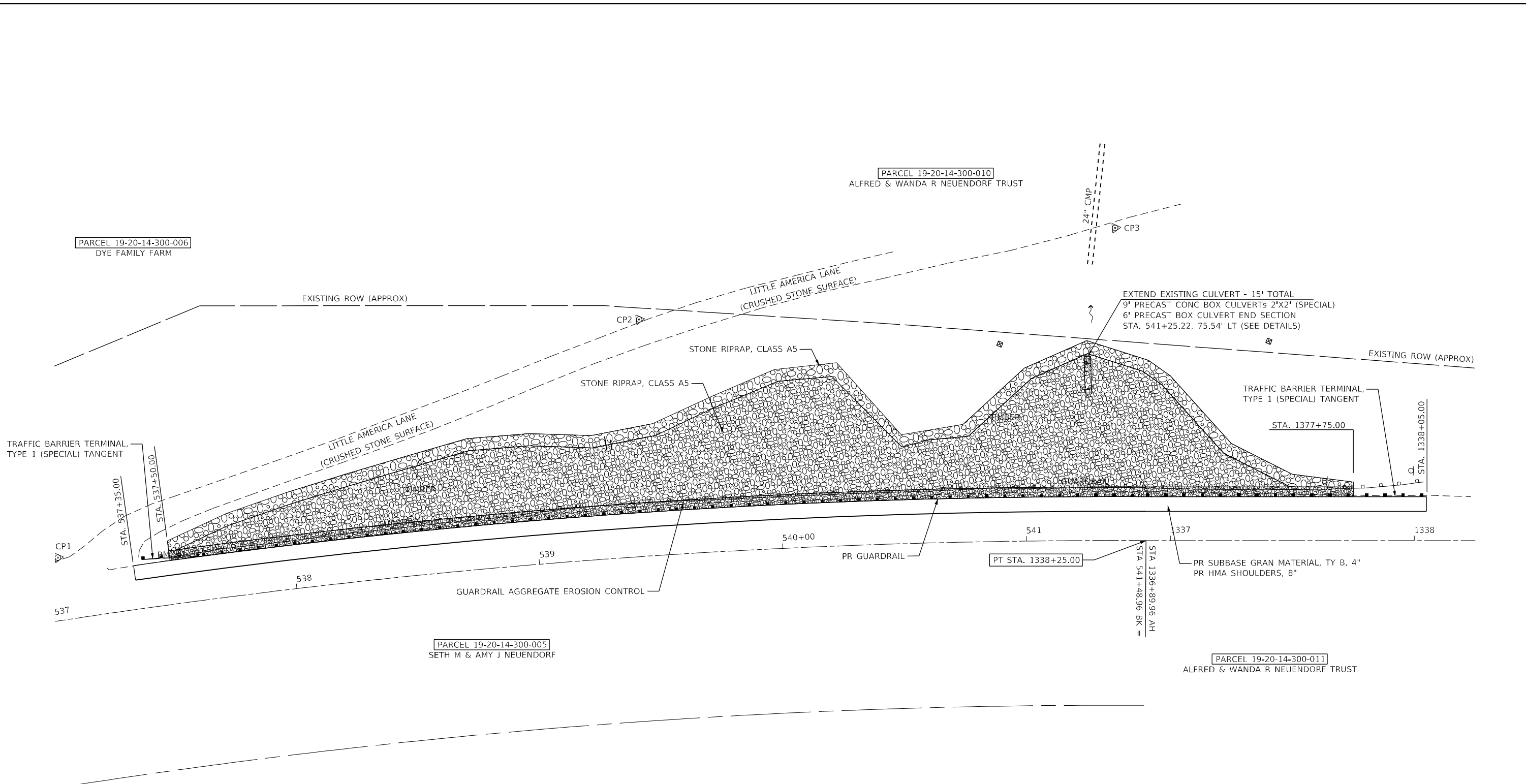
**STATE OF ILLINOIS
 DEPARTMENT OF TRANSPORTATION**

**FAP 317 (US 24)
 REMOVAL PLAN**

SCALE: 1"=20' SHEET 1 OF 1 SHEETS STA. 537+00.00 TO STA. 1338+25.00

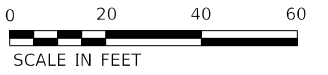
F.A.P. RTE.	SECTION	COUNTY	TOTAL SHEETS	SHEET NO.
317	(137,102)SLP,PP	FULTON	22	12
CONTRACT NO. 68H92				
ILLINOIS FED. AID PROJECT				

MODEL: D:\p\11...
 FILE NAME: P:\Caledonia\2113081\DOT - DIST 4 - PTB 201-023\Work Order 08 - FY 2023 Slope Repair\18_Transportation\US 24 Little America\CAD_Sheets\13_int\13a.dgn



BM #1
 MAG NAIL TOP OF
 WOODEN GUARDRAIL POST
 ELEV. 507.69

EXIST. CURVE C24
 PI STA. = 537+69.17
 $\Delta = 15^\circ 20' 13''$ (RT)
 $D = 2^\circ 00' 25''$
 $R = 2854.79''$
 $T = 384.38'$
 $L = 764.17'$
 P.C. STA. = 533+84.79
 P.T. STA. = 541+48.96
 SE = 0.03 FT/FT



KLINGNER & ASSOCIATES, P.C.
 Engineers • Architects • Surveyors
 Galesburg, Illinois

USER NAME = aschaefer	DESIGNED -	REVISED -
PLOT SCALE = 40,0000 */ in.	DRAWN -	REVISED -
PLOT DATE = 3/25/2024	CHECKED -	REVISED -
	DATE -	REVISED -

STATE OF ILLINOIS
DEPARTMENT OF TRANSPORTATION



FAP 317 (US 24)	
PLAN	
SCALE: 1"=20'	SHEET 1 OF 1 SHEETS
STA. 537+00.00	TO STA. 1338+25.00

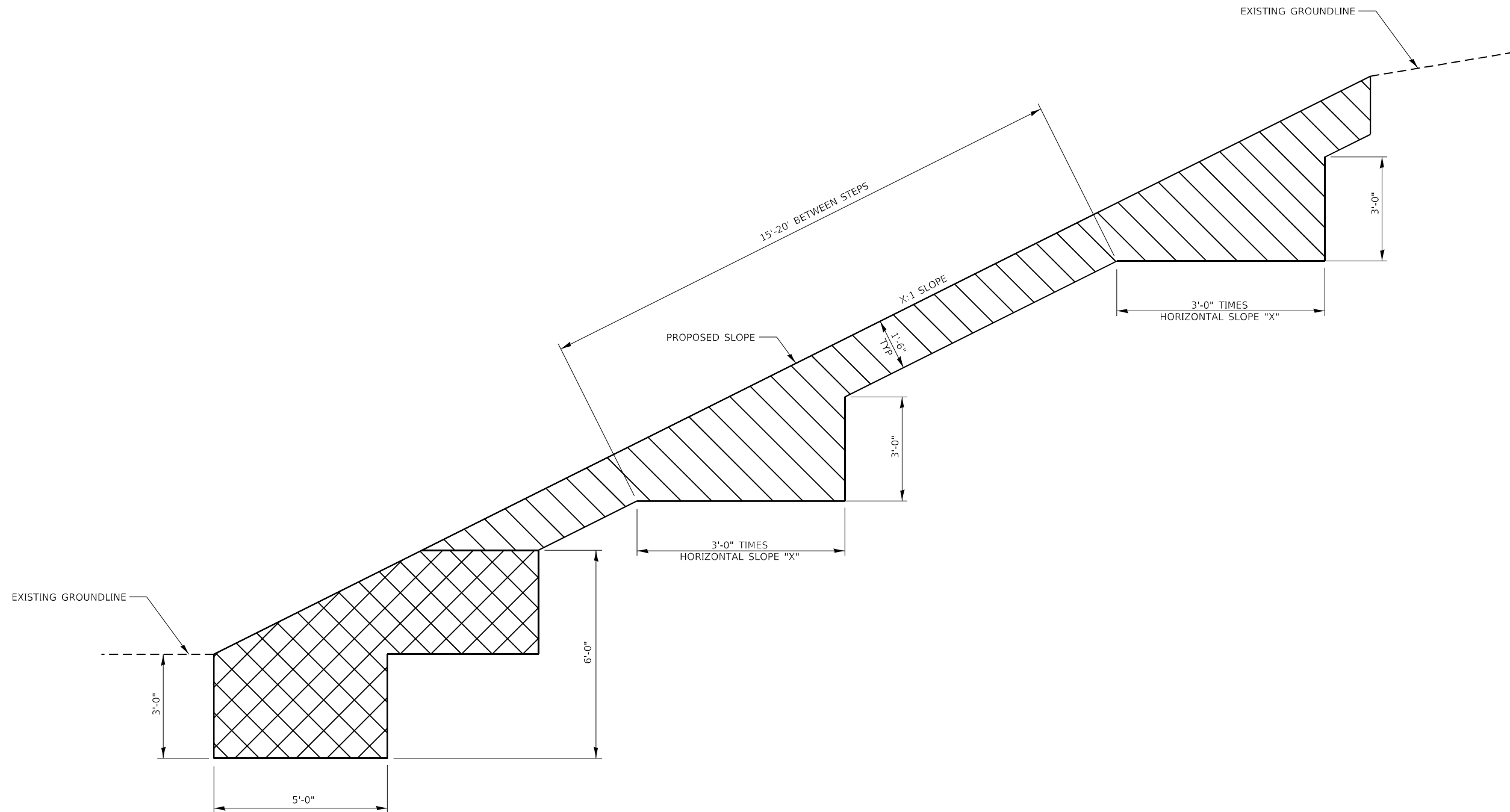
F.A.P. RTE.	SECTION	COUNTY	TOTAL SHEETS	SHEET NO.
317	(137,102)SLP,PP	FULTON	22	13
CONTRACT NO. 68H92				
ILLINOIS FED. AID PROJECT				

GENERAL NOTES:

1. EXCAVATE AND GRADE SLOPE FROM THE EXISTING TOE AS NECESSARY TO PLACE RIPRAP ACCORDING TO THE SECTION DETAILS SHOWN.
2. FILTER FABRIC SHALL BE PLACED PRIOR TO PLACING RIPRAP.
3. BEDDING MATERIAL IS NOT REQUIRED.

MATERIAL:

-  STONE RIPRAP, CLASS A5
-  STONE RIPRAP, CLASS A4



SLOPE STEPS DETAIL

MODEL Path: \\...
 FILE NAME: P:\Caledonia\2023\317\317_Slope_Steps_Detail.dgn

KLINGNER & ASSOCIATES, P.C.
 Engineers • Architects • Surveyors
 Galesburg, Illinois

USER NAME = aschafer	DESIGNED -	REVISED -
PLOT SCALE = 100,0000' / in.	DRAWN -	REVISED -
PLOT DATE = 3/25/2024	CHECKED -	REVISED -
	DATE -	REVISED -

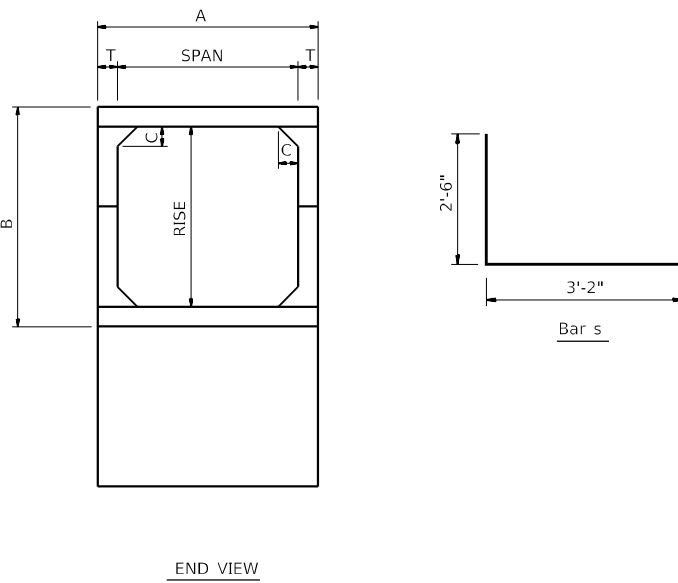
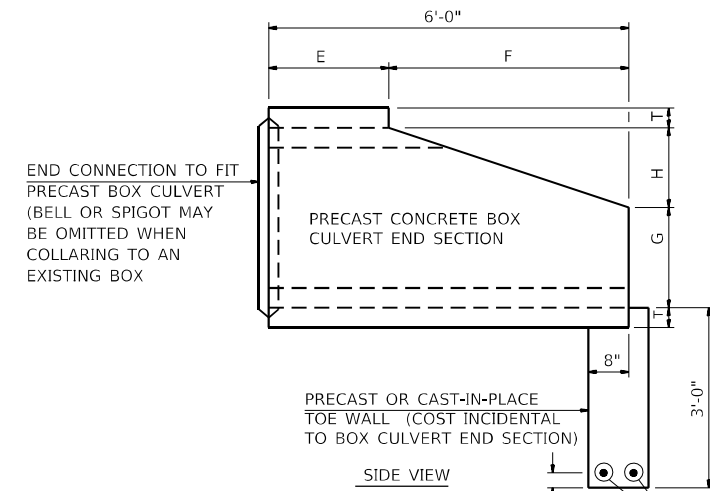
**STATE OF ILLINOIS
 DEPARTMENT OF TRANSPORTATION**

**FAP 317 (US 24)
 SLOPE STEP DETAIL**

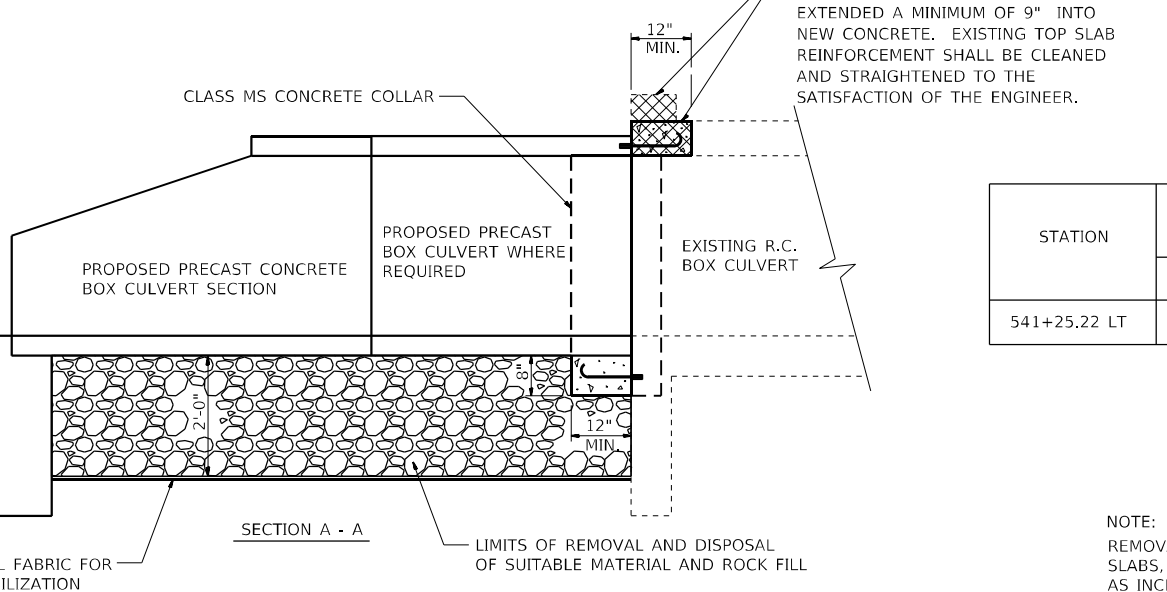
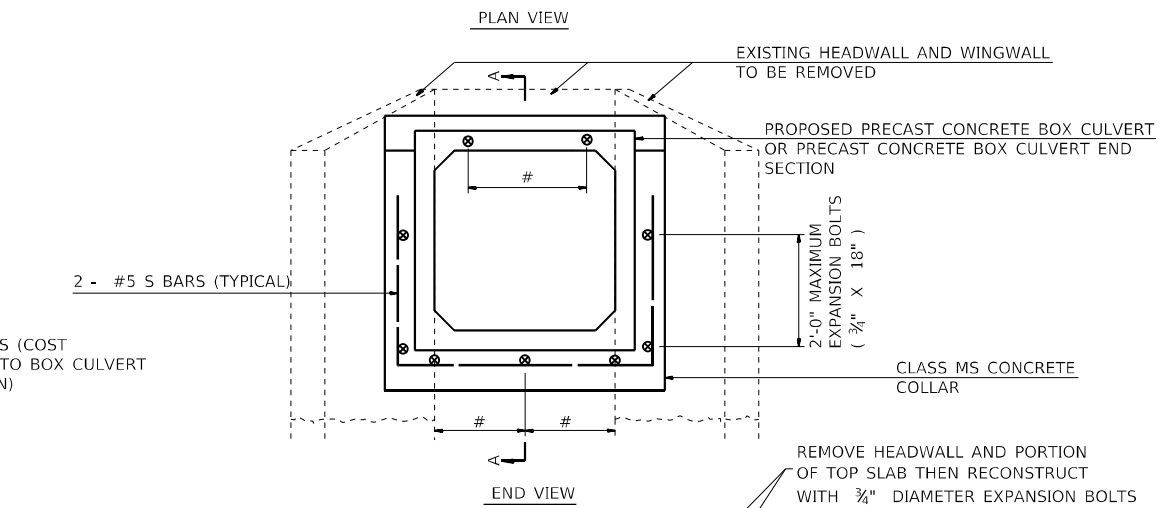
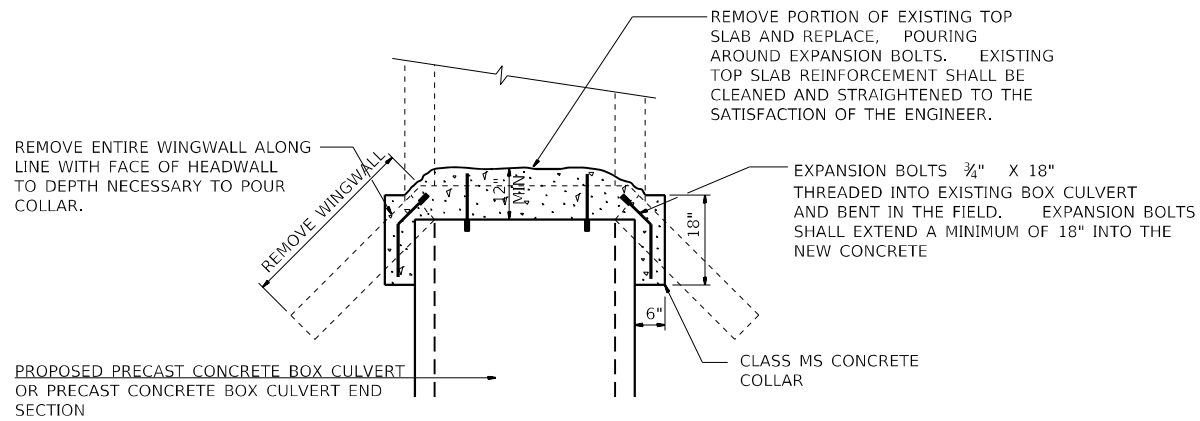
SCALE: NTS SHEET 1 OF 1 SHEETS STA. TO STA.

F.A.P. RTE.	SECTION	COUNTY	TOTAL SHEETS	SHEET NO.
317	(137,102)SLP,PP	FULTON	22	14
CONTRACT NO. 68H92				
ILLINOIS FED. AID PROJECT				

NOTE:
EXPANSION BOLTS SHALL CONSIST OF SELF DRILLING EXPANSION SHIELDS AND 3/4" DIAMETER HOOKED BOLTS. HOOKED BOLTS SHALL EXTEND A MINIMUM DISTANCE AS SPECIFIED, 9" OR 18" INTO THE NEW CONCRETE. MINIMUM CERTIFIED PROOF LOAD = 4080 LBS.



Span x Rise	T	A	B	C	E	F	G	H
2' x 2'	4"	2'-8"	2'-8"	4"	3'-0"	3'-0"	1'-0"	1'-0"



NUMBER OF EXPANSION BOLTS AND SPACING

SPAN X RISE	TOP SLAB 3/4" X 9" *	BOTTOM SLAB 3/4" X 9" *	EACH WING 3/4" X 18" **
2' x 2'	2 at 18"	2 at 18"	2 at 18"

* THE DIMENSIONS SHOWN ARE THE MINIMUM EXTENSIONS OF THE EXPANSION BOLTS INTO THE NEW CONCRETE.

SCHEDULE OF ESTIMATED EARTHWORK QUANTITIES

STATION	SIZE (FT)	POROUS GRANULAR EMBANKMENT	GEO TECHNICAL FABRIC FOR GROUND STABILIZATION	± ROCK FILL
		TON	(S.Y.)	TON
541+25.22 LT	2' X 2'	4	10	13

* APPROXIMATELY 2'-0" DEEP

SCHEDULE OF ESTIMATED QUANTITIES

STATION	SIZE (FT)	CONCRETE COLLAR	EXPANSION BOLTS	REINFORCEMENT BARS	PRECAST CONCRETE BOX CULVERTS 2'X2' (SPECIAL)	BOX CULVERT END SECTIONS, CULVERT NO. 1
		(C.Y.)	(EA.)	(LBS)	(FOOT)	(EACH)
541+25.22 LT	2' X 2'	0.5	8	17	9	1

NOTE:
REMOVAL OF EXISTING WINGWALLS, HEADWALLS, PORTIONS OF EXISTING TOP SLABS, ETC., SHALL NOT BE PAID FOR SEPARATELY, BUT SHALL BE CONSIDERED AS INCLUDED IN THE CONTRACT UNIT PRICE PER CUBIC YARD FOR CONCRETE COLLAR.

STRUCTURE EXCAVATION REQUIRED FOR THE REMOVAL OF EXISTING HEADWALLS, WINGWALLS, OR TOP SLABS SHALL BE INCLUDED IN THE COST OF BOX CULVERT END SECTION.

COST OF POROUS GRANULAR MATERIAL AND REMOVAL AND DISPOSAL OF UNSUITABLE MATERIAL SHALL BE PAID FOR SEPARATELY.

MODEL: Defaul; FILE NAME: P:\Caleburg\2\filed13081\DDOT - DIST 4 - PTB 2014\03\Work Order 08 - FY 2023 Slope Repair\18_Transportation\US 24 Little America\CAD_Sheets\15_pntDetail.dgn

KLINGNER & ASSOCIATES, P.C.
Engineers • Architects • Surveyors
Galesburg, Illinois
497 North Park Street
Galesburg, IL 62541

USER NAME = aschaefer	DESIGNED -	REVISED -
PLOT SCALE = 100,0000' / in.	DRAWN -	REVISED -
PLOT DATE = 4/5/2024	CHECKED -	REVISED -
	DATE -	REVISED -

**STATE OF ILLINOIS
DEPARTMENT OF TRANSPORTATION**

**FAP 317 (US 24)
BOX CULVERT EXTENSION DETAILS**

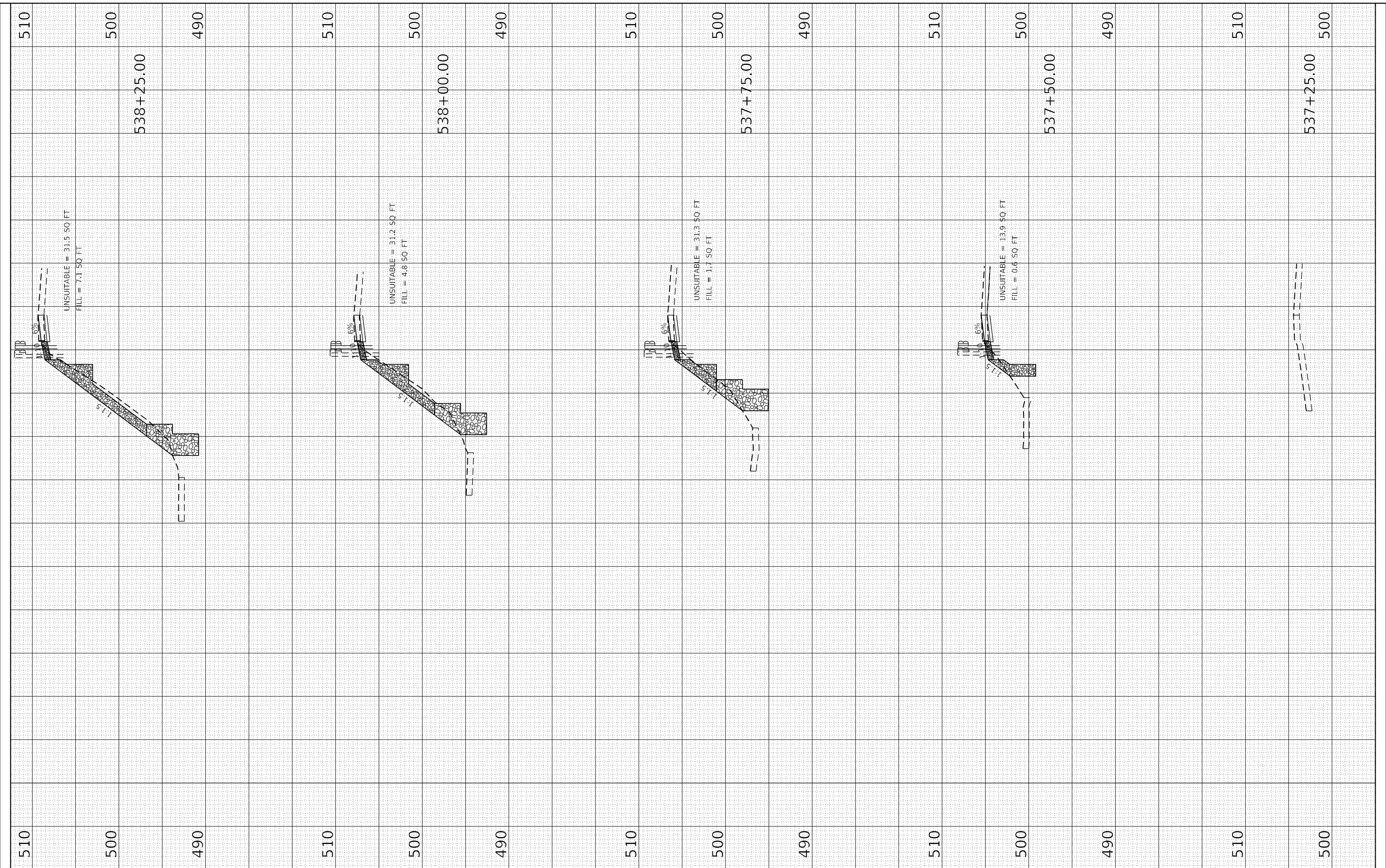
SCALE: NONE SHEET 1 OF 1 SHEETS STA. TO STA.

F.A.P. RTE.	SECTION	COUNTY	TOTAL SHEETS	SHEET NO.
317	(137,102)SLP,PP	FULTON	22	15
CONTRACT NO. 68H92				
ILLINOIS FED. AID PROJECT				

FINAL SURVEY	SURVEYED	BY	DATE
NOTE BOOK	PLOTTED		
NO.	TEMPLATE		
	AREAS CHECKED		
	AREAS CHECKED		

ORIGINAL SURVEY	SURVEYED	BY	DATE
NOTE BOOK	PLOTTED		
NO.	TEMPLATE		
	AREAS CHECKED		
	AREAS CHECKED		

MODEL: Default
 FILE NAME: P:\gis\leban\21\116213081 IDOT - DIST 4 - FTB 20-03\Work Order 08 - FT 2023 Stone Repair\15_Transportation\US 24 Little America\CAD Sheets\6-22_XS_LAL.dgn



KLINGNER & ASSOCIATES, P.C.
 Engineers • Architects • Surveyors
 615 NORTH 5TH STREET, QUINCY, ILLINOIS 62401-2122-3870
 STATE OF ILLINOIS DESIGN FIRM NO. 184-2738

USER NAME = aschafer
 PLOT SCALE = 20,0000 * / in.
 PLOT DATE = 3/25/2024

DESIGNED -
 DRAWN -
 CHECKED -
 DATE -

REVISED -
 REVISED -
 REVISED -
 REVISED -

**STATE OF ILLINOIS
 DEPARTMENT OF TRANSPORTATION**

SCALE: 1" = 10'H
 1" = 20'V

SHEET 1 OF 7 SHEETS
 STA. 537+25.00 TO STA. 538+25.00

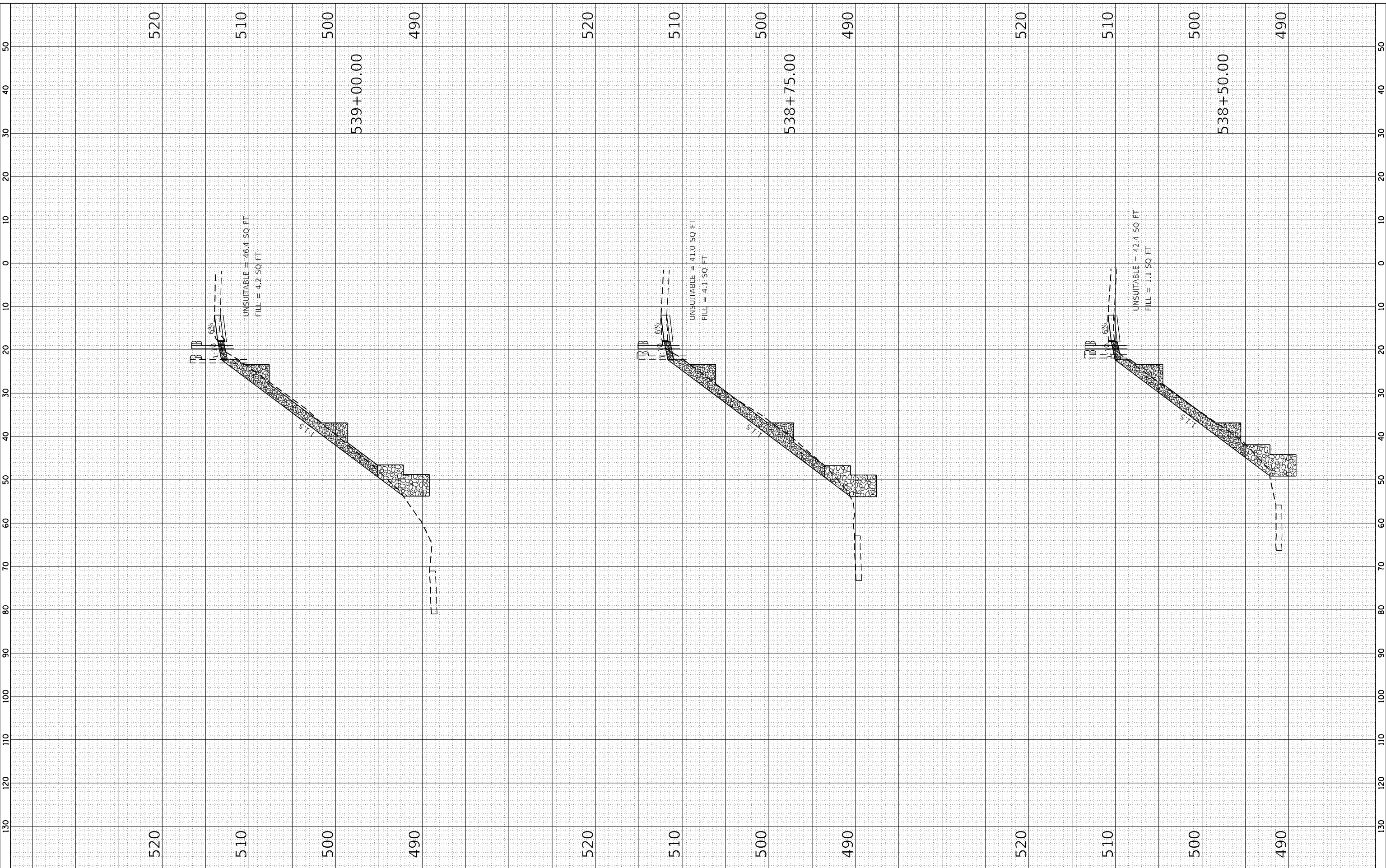
**FAP 317 (US 24)
 CROSS SECTIONS**

F.A.P. RTE.	SECTION	COUNTY	TOTAL SHEETS	SHEET NO.
317	(137,102)SLP,PP	FULTON	22	16
CONTRACT NO. 68H92				
ILLINOIS FED. AID PROJECT				

FINAL SURVEY NO.	SURVEYED	BY	DATE
NOTE BOOK	PLOTTED		
AREAS CHECKED	TEMPLATE		
	AREAS		
	CHECKED		

ORIGINAL SURVEY NO.	SURVEYED	BY	DATE
NOTE BOOK	PLOTTED		
AREAS CHECKED	TEMPLATE		
	AREAS		
	CHECKED		

MODEL: Default
 FILE NAME: P:\gis\sub\12\116213081\DOT - DIST 4 - FTB 20+03\Work Order 08 - Ft 2023 Shore Repair\15 - Transportation\US 24 - Little America\CAD Sheets\16-22_XS_LAL.dgn



KLINGNER & ASSOCIATES, P.C.
 Engineers • Architects • Surveyors
 616 NORTH ST. QUINCY, ILLINOIS 62401-2122-3870
 STATE OF ILLINOIS DESIGN FIRM NO. 184-2738

USER NAME	= aschafer
PLOT SCALE	= 20,0000 * / in.
PLOT DATE	= 3/25/2024

DESIGNED	-
DRAWN	-
CHECKED	-
DATE	-

REVISED	-
REVISED	-
REVISED	-
REVISED	-

**STATE OF ILLINOIS
 DEPARTMENT OF TRANSPORTATION**

**FAP 317 (US 24)
 CROSS SECTIONS**

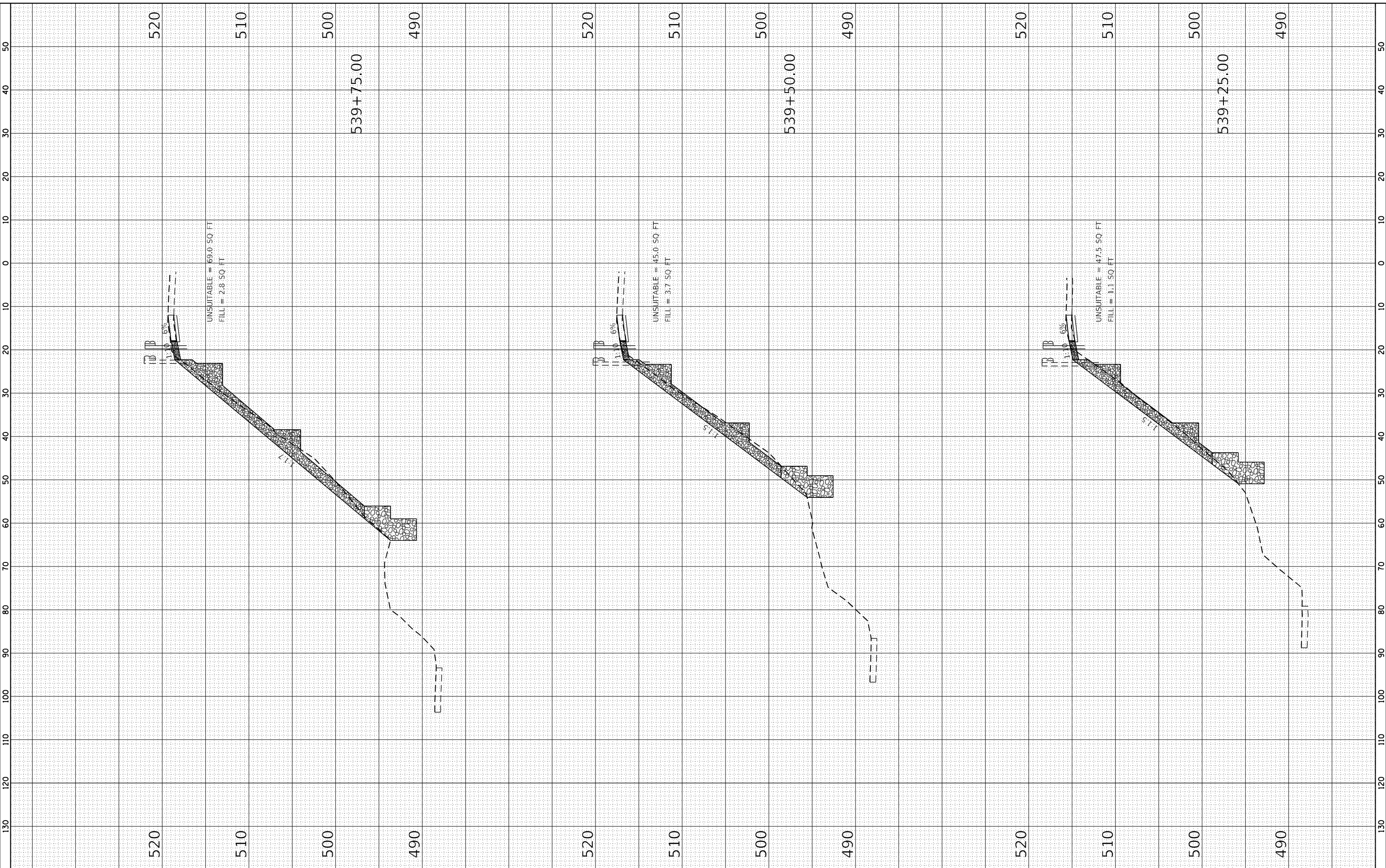
SCALE: 1" = 10' H
 1" = 20' V
 SHEET 2 OF 7 SHEETS
 STA. 538+50.00 TO STA. 539+00.00

F.A.P. RTE.	SECTION	COUNTY	TOTAL SHEETS	SHEET NO.
317	(137,102)SLP,PP	FULTON	22	17
CONTRACT NO. 68H92				
ILLINOIS FED. AID PROJECT				

FINAL SURVEY	SURVEYED	BY	DATE
NOTE BOOK	PLOTTED		
NO.	TEMPLATE		
	AREAS CHECKED		
	AREAS CHECKED		

ORIGINAL SURVEY	SURVEYED	BY	DATE
NOTE BOOK	PLOTTED		
NO.	TEMPLATE		
	AREAS CHECKED		
	AREAS CHECKED		

MODEL Default
 FILE NAME: P:\gis\sub\12\1162013081.DOT - DIST 4 - FTB 20-03\Work Order 08 - Ft 2023 Shore Repair\15 - Transportation\US 24 - Little America\CAD Sheets\16-22_XS_LAL.dgn



KLINGNER & ASSOCIATES, P.C.
 Engineers • Architects • Surveyors
 616 NORTH ST. QUINCY, ILLINOIS 62401-2123-3670
 STATE OF ILLINOIS DESIGN FIRM NO. 184-2738

USER NAME = aschafer	DESIGNED -	REVISED -
PLOT SCALE = 20.0000' / in.	DRAWN -	REVISED -
PLOT DATE = 3/25/2024	CHECKED -	REVISED -
	DATE -	REVISED -

**STATE OF ILLINOIS
 DEPARTMENT OF TRANSPORTATION**

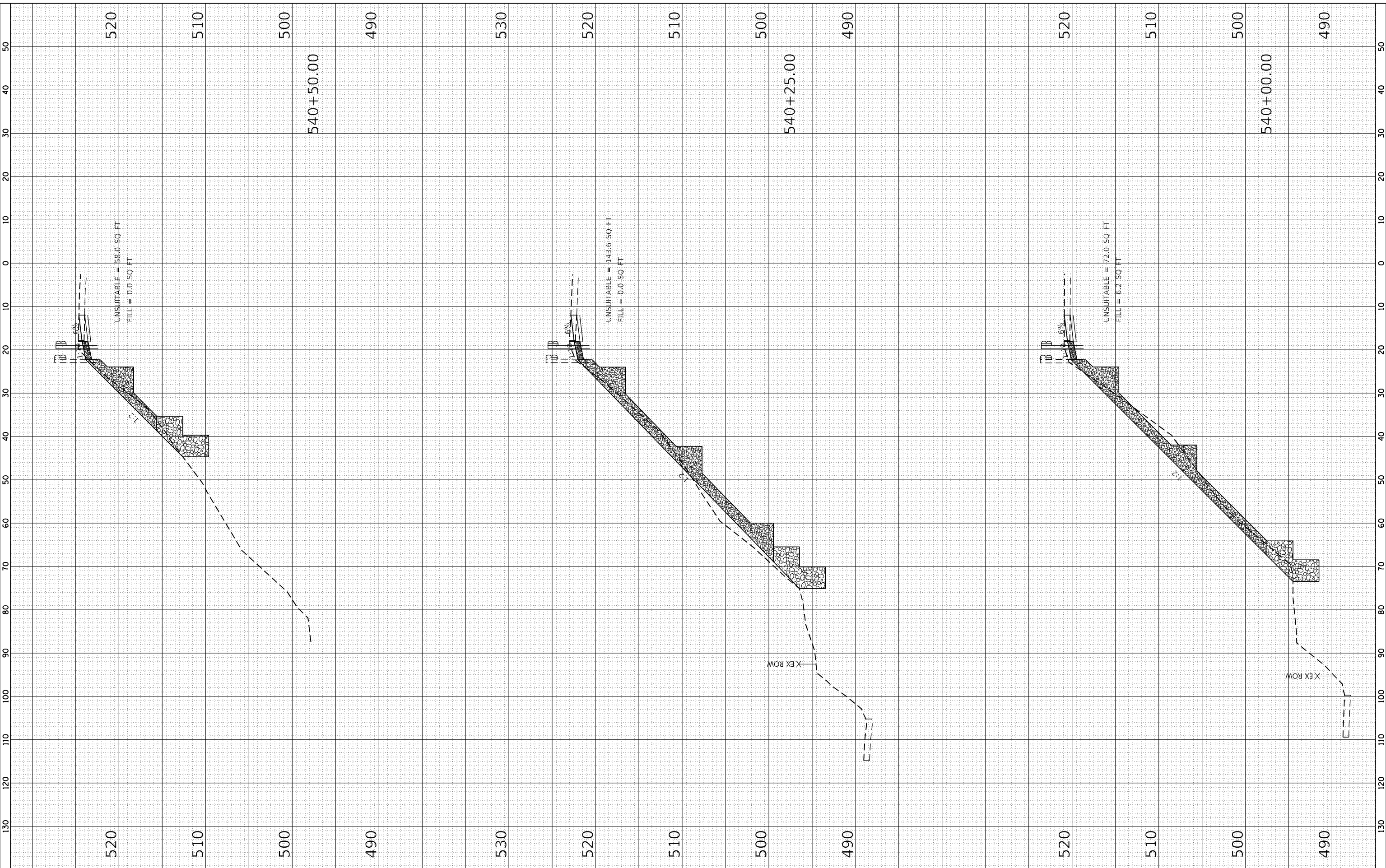
FAP 317 (US 24) CROSS SECTIONS	
SCALE: 1" = 10' H 1" = 20' V	SHEET 3 OF 7 SHEETS
STA. 539+25.00	TO STA. 539+75.00

F.A.P. RTE. 317	SECTION (137,102)SLP,PP	COUNTY FULTON	TOTAL SHEETS 22	SHEET NO. 18
CONTRACT NO. 68H92				
ILLINOIS FED. AID PROJECT				

FINAL SURVEY	SURVEYED	BY	DATE
NOTE BOOK	PLOTTED		
NO.	TEMPLATE		
	AREAS CHECKED		
	AREAS CHECKED		

ORIGINAL SURVEY	SURVEYED	BY	DATE
NOTE BOOK	PLOTTED		
NO.	TEMPLATE		
	AREAS CHECKED		
	AREAS CHECKED		

MODEL Default
 FILE NAME: P:\gilebeur\12\1160213081\DOT - DIST 4 - FTB 20+00\Work Order 08 - Ft 2023 Shore Repair\15 - Transportation\US 24 - Little America\CAD Sheets\16-22_XS_LAL.dgn



KLINGNER & ASSOCIATES, P.C.
 Engineers • Architects • Surveyors
 615 NORTH ST. QUINCY, ILLINOIS 62401-2122-3870
 STATE OF ILLINOIS DESIGN FIRM NO. 184-2738

USER NAME = aschafer
 PLOT SCALE = 20,0000 * / in.
 PLOT DATE = 3/25/2024

DESIGNED -
 DRAWN -
 CHECKED -
 DATE -

REVISED -
 REVISED -
 REVISED -
 REVISED -

**STATE OF ILLINOIS
 DEPARTMENT OF TRANSPORTATION**

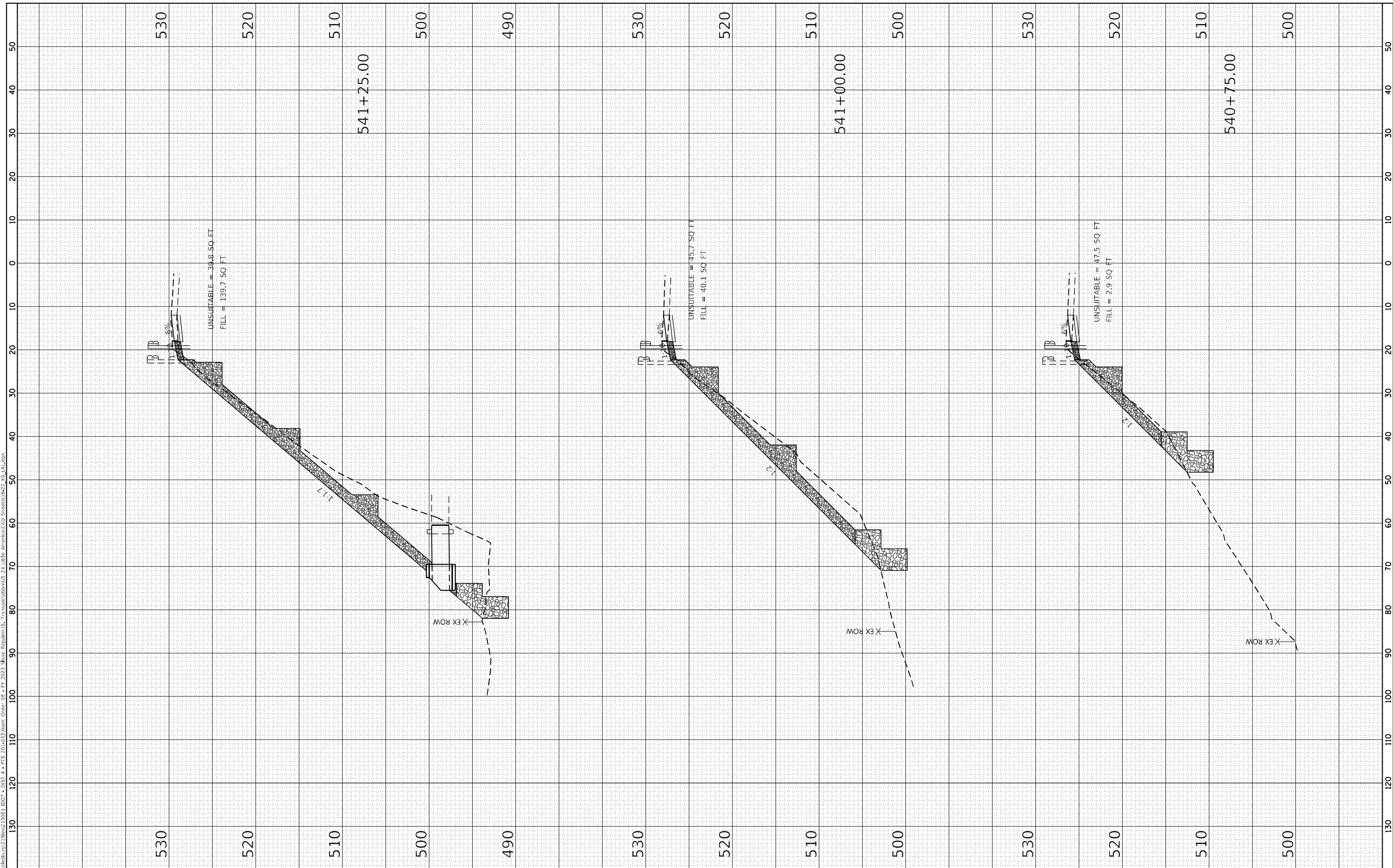
**FAP 317 (US 24)
 CROSS SECTIONS**
 SCALE: 1" = 10' H
 1" = 20' V
 SHEET 4 OF 7 SHEETS
 STA. 540+00.00 TO STA. 540+50.00

F.A.P. RTE.	SECTION	COUNTY	TOTAL SHEETS	SHEET NO.
317	(137,102)SLP,PP	FULTON	22	19
CONTRACT NO. 68H92				
ILLINOIS FED. AID PROJECT				

FINAL SURVEY NO.	SURVEYED	BY	DATE
NOTE BOOK	PLOTTED		
AREAS CHECKED	TEMPLATE		
	AREAS		
	CHECKED		

ORIGINAL SURVEY NO.	SURVEYED	BY	DATE
NOTE BOOK	PLOTTED		
AREAS CHECKED	TEMPLATE		
	AREAS		
	CHECKED		

MODEL Default
 FILE NAME: P:\globe\work\12\1162\13081 IDOT - DIST 4 - FTB 20+03\Work Order 08 - Ft 2023 Shore Repair\15 - Transportation\US 24 - Little America\CAD Sheets\6-22-XS-LAL.dgn



KLINGNER & ASSOCIATES, P.C.
 Engineers • Architects • Surveyors
 615 NORTH ST. QUINCY, ILLINOIS 62401 217.233-3370
 STATE OF ILLINOIS DESIGN FIRM NO. 184-2738

USER NAME = aschafer	DESIGNED -	REVISED -
PLOT SCALE = 20,0000 * / in.	DRAWN -	REVISED -
PLOT DATE = 3/25/2024	CHECKED -	REVISED -
	DATE -	REVISED -

**STATE OF ILLINOIS
 DEPARTMENT OF TRANSPORTATION**

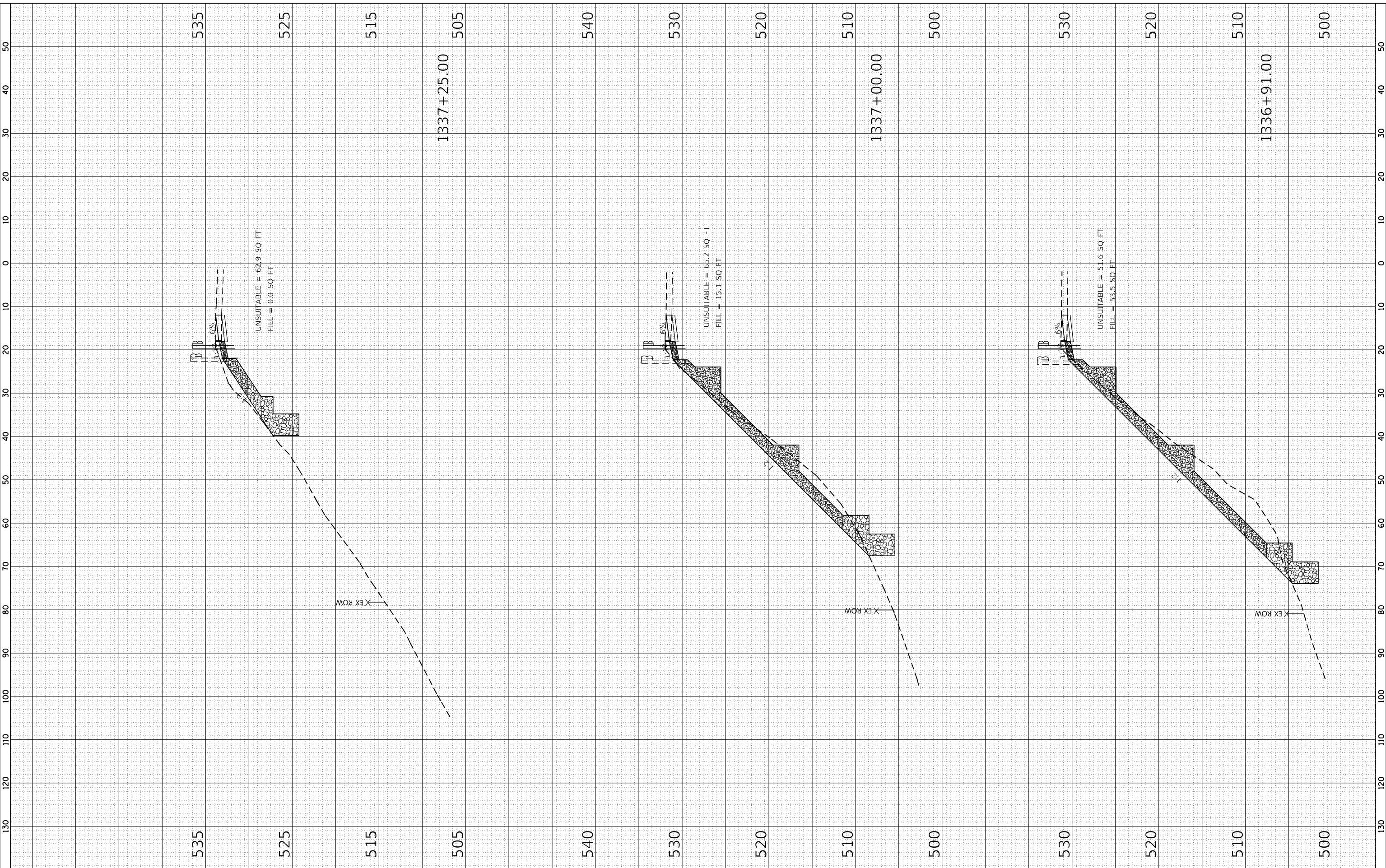
**FAP 317 (US 24)
 CROSS SECTIONS**
 SCALE: 1" = 10' H
 1" = 20' V
 SHEET 5 OF 7 SHEETS
 STA. 540+75.00 TO STA. 541+25.00

F.A.P. RTE. 317	SECTION (137,102)SLP,PP	COUNTY FULTON	TOTAL SHEETS 22	SHEET NO. 20
CONTRACT NO. 68H92				
ILLINOIS FED. AID PROJECT				

FINAL SURVEY NO.	SURVEYED	BY	DATE
NOTE BOOK	PLOTTED		
AREAS CHECKED	TEMPLATE		
	AREAS		

ORIGINAL SURVEY NO.	SURVEYED	BY	DATE
NOTE BOOK	PLOTTED		
AREAS CHECKED	TEMPLATE		
	AREAS		

MODEL: Default
 FILE NAME: P:\gis\leban\12\116213081.DOT - DIST 4 - FTB 20+031\Work Order 08 - Fr 2023 Shore Repair\16 - Transportation\US 24 - Little America\CAD Sheets\16-22_XS-LAL.dgn



KLINGNER & ASSOCIATES, P.C.
 Engineers • Architects • Surveyors
 616 NORTH ST. QUINCY, ILLINOIS 62401-2123-3670
 STATE OF ILLINOIS DESIGN FIRM NO. 184-2738

USER NAME = aschafer	DESIGNED -	REVISED -
PLOT SCALE = 20,0000' / in.	DRAWN -	REVISED -
PLOT DATE = 3/25/2024	CHECKED -	REVISED -
	DATE -	REVISED -

**STATE OF ILLINOIS
 DEPARTMENT OF TRANSPORTATION**

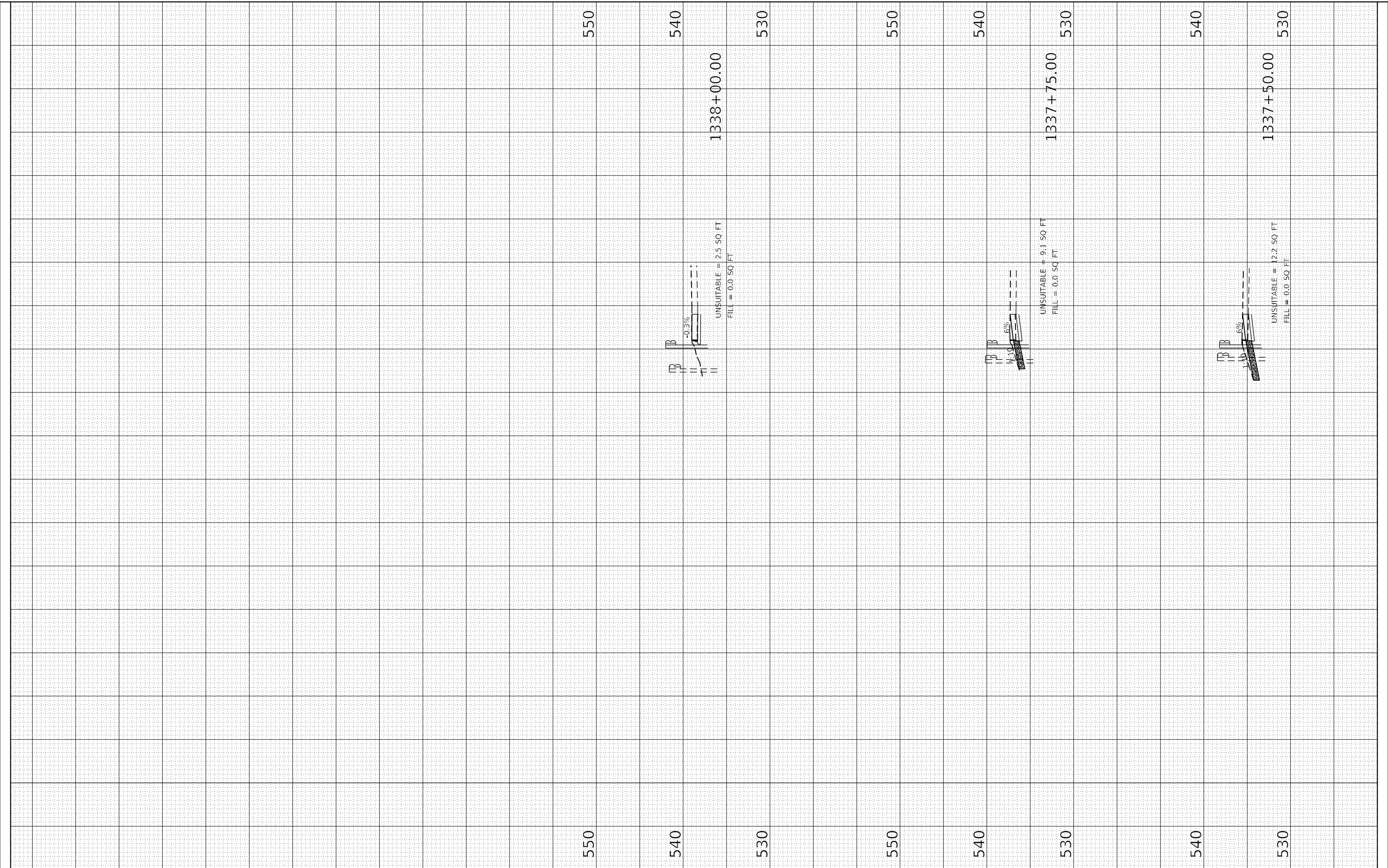
FAP 317 (US 24) CROSS SECTIONS	
SCALE: 1" = 10' H 1" = 20' V	SHEET 6 OF 7 SHEETS
STA. 1336+91.00 TO STA. 1337+25.00	

F.A.P. RTE. 317	SECTION (137,102)SLP,PP	COUNTY FULTON	TOTAL SHEETS 22	SHEET NO. 21
CONTRACT NO. 68H92				
ILLINOIS FED. AID PROJECT				

FINAL SURVEY NO.	SURVEYED PLOTTED TEMPLATE AREAS CHECKED	BY	DATE

ORIGINAL SURVEY NO.	SURVEYED PLOTTED TEMPLATE AREAS CHECKED	BY	DATE

MODEL Default
 FILE NAME: P:\gis\leban\21\1162113081 IDOT - DIST 4 - FTB 20-03\Work Order 08 - FT 2023 Stone Repair\15. Transportation\US 24 Little America\CAD Sheets\6-22 US LA.dgn



KLINGNER & ASSOCIATES, P.C.
 Engineers • Architects • Surveyors
 616 NORTH ST. QUINCY, ILLINOIS 62401-2122-3670
 STATE OF ILLINOIS DESIGN FIRM NO. 184-2738

USER NAME = aschafer
PLOT SCALE = 20,0000 * / in.
PLOT DATE = 3/25/2024

DESIGNED -	REVISIED -
DRAWN -	REVISIED -
CHECKED -	REVISIED -
DATE -	REVISIED -

**STATE OF ILLINOIS
 DEPARTMENT OF TRANSPORTATION**

**FAP 317 (US 24)
 CROSS SECTIONS**

SCALE: 1" = 100' H
 1" = 200' V

SHEET 7 OF 7 SHEETS STA. 1337+50.00 TO STA. 1338+00.00

F.A.P. RTE.	SECTION	COUNTY	TOTAL SHEETS	SHEET NO.
317	(137,102)SLP,PP	FULTON	22	22
CONTRACT NO. 68H92				
ILLINOIS FED. AID PROJECT				